

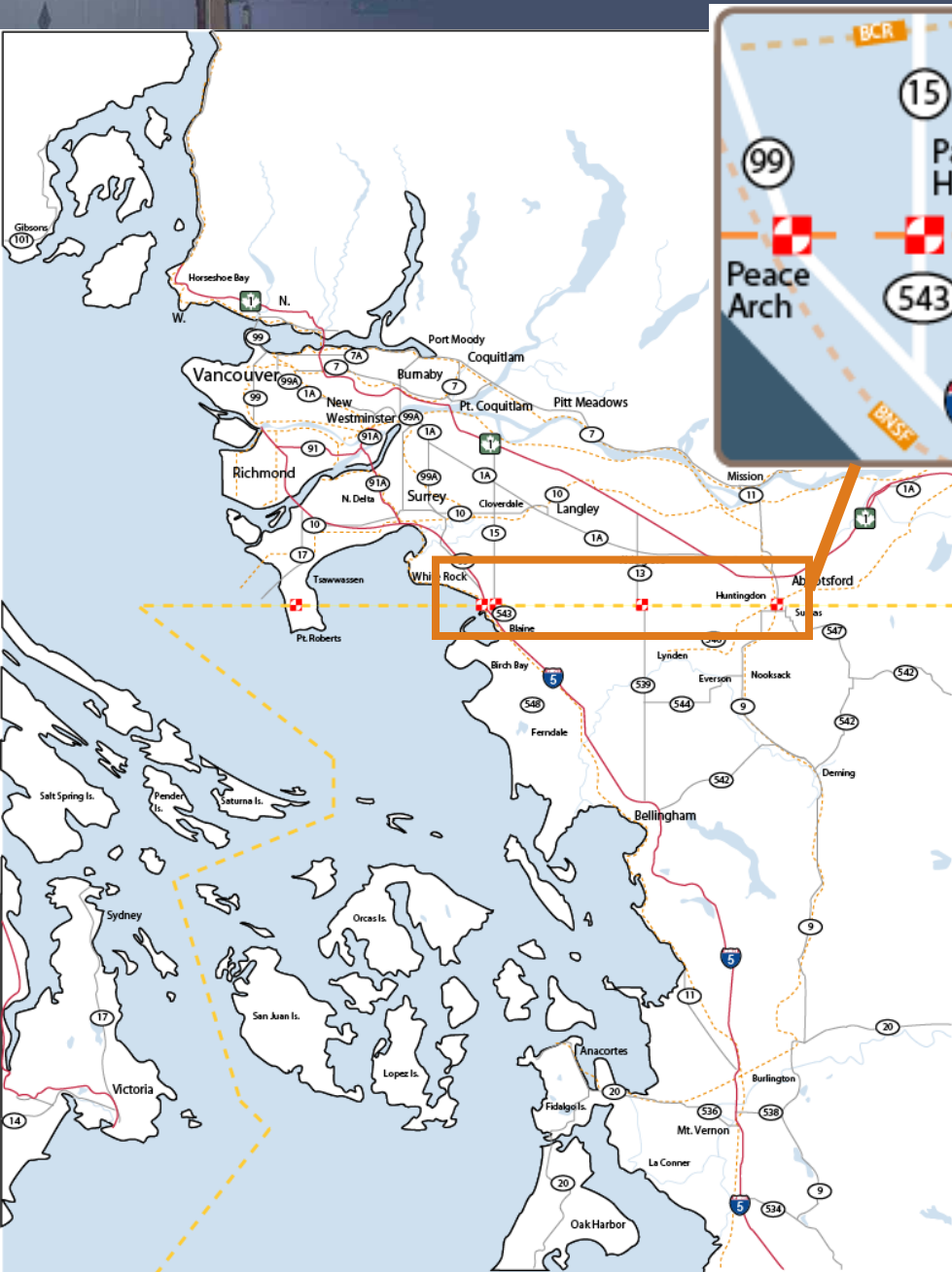
Washington State/ British Columbia Border Advance Traveler Information/ Data Management System and FAST

2008 Smart Roadside Workshop

Gordon Rogers

Bellingham, WA, Whatcom Council of Governments, MPO / IMTC

April 29, 2008



Cascade Gateway

- 3rd busiest passenger crossing
- 4th busiest commercial crossing
- 4 crossings, two less than a mile apart

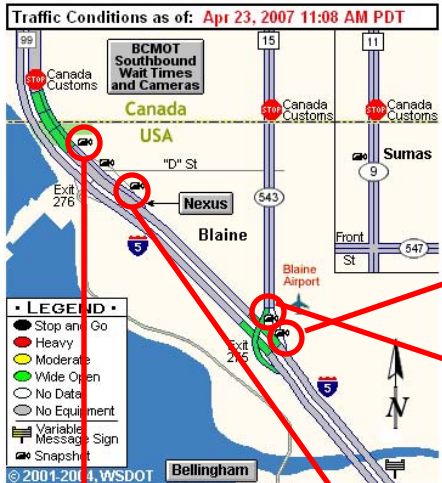
Northbound ATIS System

Washington State Department of Transportation | News | Contact WSDOT | WSDOT Home

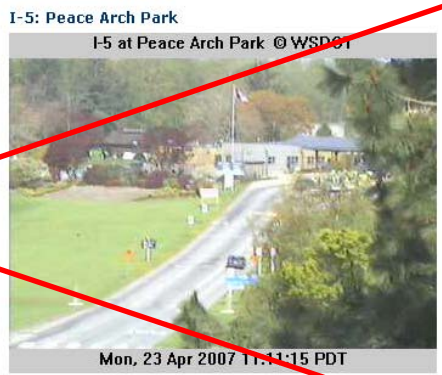
Traffic & Roads | Projects | Business | Environment | Maps & Data

Search **Canadian Border Traffic** text size: T T T

- Border Traffic**
- Canadian Border Home
 - Local Travel Alerts and Slowdowns
 - Southbound Canadian Wait Times and Cameras
 - US Customs Border Wait Times
 - Canadian Border Wait Times
 - Border Line-ups.com
- Traffic & Cameras**
- State View
 - Seattle Area
 - Ferry Cameras
 - Tacoma
 - Gig Harbor
 - Olympia
 - Vancouver Area
 - Mount Vernon
 - Bellingham
 - Canadian Border
 - Spokane
 - Wenatchee
- State Travel Info**



North Cascades Pass
Opening efforts in progress



Southbound ATIS System

Ministry Home GOVERNMENT OF BRITISH COLUMBIA

Road Reports

Ministry of Transportation

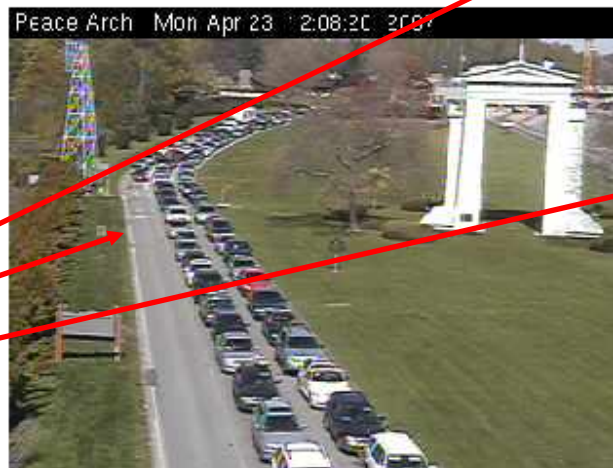
The Minister | News | Search | Reports & Publications | Contacts



ESTIMATED NON-COMMERCIAL BORDER CROSSING DELAYS	
PEACE ARCH CROSSING	90 MIN
PACIFIC CROSSING	60 MIN
EASTBOUND 8TH AVENUE	5 MIN

Updated: 2007/04/23 12:05:21

copyright © 2004 Province of British Columbia



- The camera is looking North.



Variable Message Signs



Southbound



Northbound

Project Development

■ **Scope developed by:**

- **WA State Department of Transportation**
- **B.C. Ministry of Transportation**
- **Whatcom Council of Governments**

■ **Funded by:**

- **Transport Canada (ITS – SHIP Program)**
- **B.C. Ministry of Transportation**
- **WA State Department of Transportation**
- **University of Washington Transportation Center**

Work Elements

- **Evaluate user requirements**
 - What data system users want
- **Integrate data**
 - XML schema developed for U.S. & Canadian systems
- **Device inventory**
 - GPS used to develop maps and naming translation table for all detectors in systems
- **Database development**
- **Data Acquisition**
 - Extract Transform Load (ETL) process used with FTP.
- **Website Development**
 - Browse tool, custom query, and customized e-mail reports

ATIS Data Preserved

WSDOT Northbound ATIS system

Washington State Department of Transportation
TRAFFIC & ROADS PROJECT

CANADIAN BORDER TRAFFIC

Traffic Conditions as of: Oct 19, 2005 9:36 AM PDT

Canada Customs, BC MOT Southbound Wait Times and Cameras, Canada, USA, "D" St, Nexus, Blaine, Blaine Airport, Exit 276, Exit 275, Sumas, 99, 15, 11, 9, 543, 547, Bellingham

LEGEND

- Stop and Go
- Heavy
- Moderate
- Wide Open
- No Data
- No Equipment
- Variable Message Sign
- Snapshot

© 2001-2004, WSDOT

BC MoT Southbound ATIS system

Ministry Home

Road Reports

The Minister | News | Search | Reports &

Legend

- Traffic Backup
- No Traffic Backup
- No Data
- Traffic Camera
- Traffic Sign

Updated: 2005/10/19 09:45:02

8th Ave, Beach Rd, 172 St, 4th Ave, 2nd Ave, CANADA, USA, 99, 15, 543

ATIS Data Management System

```

0010110110111010101110001010110100101
0010101110101011001001011000101011101
00101010010000110001010101010001010
1010100101000101010001010010110100010
101010010101010010010110001010111100
1010110100000110101001001100100010101
01001010010001010100101001010101010
101010101010100010100101011001010
101010100101010001010101001010010
10100101010010101001010101001010100
0000101010010110010010101001011000100
10010101010011001010101000110110010
0101010101000010101010100101010101
010001010100101010100011010100101010
010110001000100100010101010101101
    
```

Northbound Border Wait Times

Offline

I-5 General Purpose	Offline
I-5 Nexus Lane	Offline
SR 543 General Purpose	coming soon

ESTIMATED NON-COMMERCIAL BORDER CROSSING DELAYS

99	PEACE ARCH CROSSING	10 MIN
15	PACIFIC CROSSING	10 MIN
	EASTBOUND 8TH AVENUE	N/A

Updated: 2005/10/19 09:45:01
copyright © 2004 Province of British Columbia

Task List

- **User requirements**
- **Preliminary Maintenance Planning**
- **Data standardization**
- **Database & transfer**
- **Internet report generator**
- **System testing**
- **Inspection agency reporting**
- **Institutional issues**
- **Final report**

Project Status

- **IMTC Core Group approved in early 2004**
- **Funding approved by Transport Canada in December 2004**
 - **Partners: BC MoT, WSDOT ATB**
 - **In-kind resources: U.W. Transportation Center (TRAC)**
- **Project advisory team established**
- **Work started: late June, 2005**
- **System completed but border facility construction impedes system**

Progress to-date

- **User requirements report finished (and online at www.wcog.org)**
- **System purchased and under development at U.W.**
- **Synergies with the TC-FHWA Border Information Flow Architecture (BIFA)**
- **Many key agreements on data integration.**
- **Draft System Requirements document**
- **Maintenance agreements**

Free and Secure Trade - FAST

- **FAST qualified shipper**
- **C-TPAT qualified carrier (Customs - Trade Partnership Against Terrorism)**
- **FAST qualified driver**
- **Known low risk trusted traveler / trusted shipper program**
- **87,000 enrolled nationally**
- **In WA 13% (70% empty) SB 5% NB**

How's it going?

- **Becoming more difficult to qualify**
- **Expensive for small operators**
- **Large fleets primary participants**
- **Marketing**
- **Empties**

Contact:

Whatcom Council of Governments

And

**International Mobility and Trade Corridor
Project**

www.wcog.org

gordon@wcog.org