

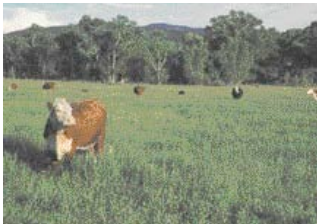


# Grazing Lands Conservation Initiative

## Fiscal Year (FY) 2005 Activities Report



The Grazing Land Conservation Initiative (GLCI) provides technical, educational, and related assistance to those who own and manage private grazing land. Healthy and productive grazing land is a substantial component of the agricultural economy and is the largest of all agricultural land uses, with over 645 million acres being grazed in the United States.



Technical assistance supports and encourages better grazing management, improved livestock production, protection of the soil from wind and water erosion, reduction of drought impacts, control of invasive weeds, and the use of energy-efficient production techniques. It also provides opportunities for water conservation, wildlife habitat development, streambank protection, and water quality improvement. Technical assistance ensures that the resources remain healthy and productive.

### Technical Assistance

Through GLCI, the Natural Resources Conservation Service (NRCS) has helped farmers and ranchers develop over 11,500 grazing land conservation plans covering more than 9.5 million acres. The “prescribed grazing” conservation practice was applied to over 8.5 million acres by farmers and ranchers, resulting in environmental and economic benefits for the producers and the public.



### Grazing Land Projects

Over 850 grazing land demonstration projects, involving 900 farms and ranches, were carried out nationwide to exhibit grazing land technologies and management in FY 2005.



### Public Education and Awareness

In FY 2005, over 1,700 education and awareness activities (grazing land workshops, field days, and tours) were conducted with over 160,000 individuals participating in the events. Over 5,500 articles were published in newspapers and magazines that were circulated to more than 9.4 million households. Moreover, 7.7 million people were reached with 900 radio and television spots and programs on grazing.



### Staffing and Training

Over 1,100 NRCS employees allocated the majority of their time to providing technical assistance to private landowners and related GLCI activities during FY 2005. Many of these employees are range conservationists, forage agronomists, and grazing land specialists. Nearly 24,000 individuals, including NRCS staff, personnel from other agencies, private grazing landowners, and managers received training in grazing land science and technology.