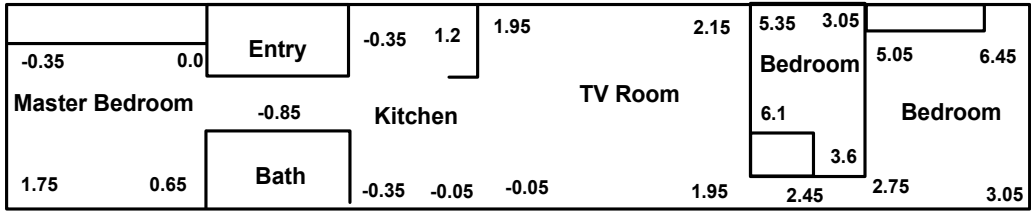


APPENDIX I

Structure Layouts and Photographs



TS-KY2

10 ft.



TS-KY2

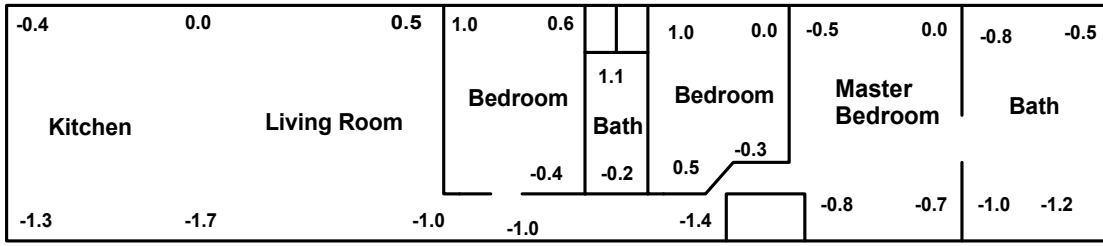


TS-IN

10 ft.



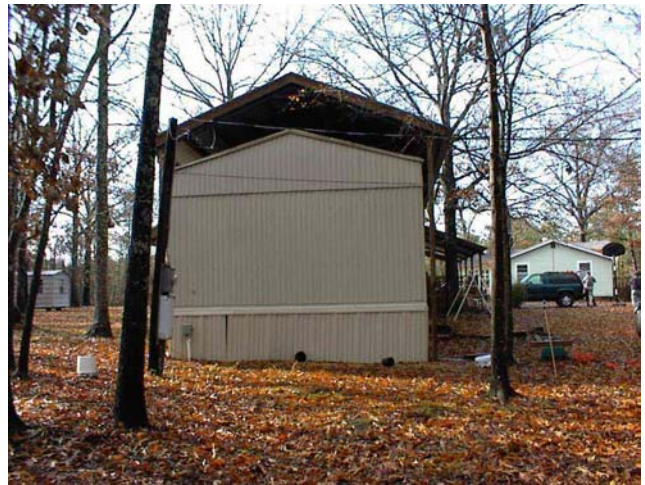
TS-IN single wide trailer



N
↑

TS-AL

10 ft.



TS-AL single wide trailer



TS-OH

10 ft.



TS-OH single wide trailer



TSA-VA

5 ft.



TSA-VA single wide add-on

| | | | | | | | |
|----------------|------|--------------------|------|-----|----------------|----------------|------|
| 2.4 | -2.1 | | | | -0.7 | -2 | -3.4 |
| Bedroom | | Bath | 0.8 | | Kitchen | Bedroom | |
| -2 | -1.9 | -0.1 | -0.2 | 0.2 | -0.6 | 0.2 | 0.4 |
| 1.8 | 0.4 | Living Room | | | 2.9 | 4.9 | 3.4 |
| Bedroom | | | | | | Bedroom | |
| 2.7 | 1.4 | 4.8 | | | -1.3 | 0.0 | 0.5 |

TSA-KY2



10 ft.



TSA-KY2 single wide add-on

| | | | | | | | | | |
|----------------|-------|-----------------|-------|---------|-------|-------------|------|-------------|------|
| 0.55 | 0.75 | 1.05 | -0.1 | 0.15 | -0.05 | 0.15 | 0.25 | 0.15 | 0.65 |
| Master Bedroom | | Main Entry Room | | Bedroom | | Bath | | Bedroom | |
| 0.65 | -0.15 | -0.1 | -0.45 | -0.05 | -0.05 | 0.25 | 0.55 | 0.35 | 1.15 |
| -0.05 | 0.05 | Closet | | 0.0 | 1.13 | -0.1 | 0.05 | 1.65 | |
| Bath | | Entry | | Kitchen | | Dining Area | | Living room | |
| 0.65 | 0.35 | 0.0 | 0.0 | -0.1 | 0.0 | 0.45 | 1.9 | | |

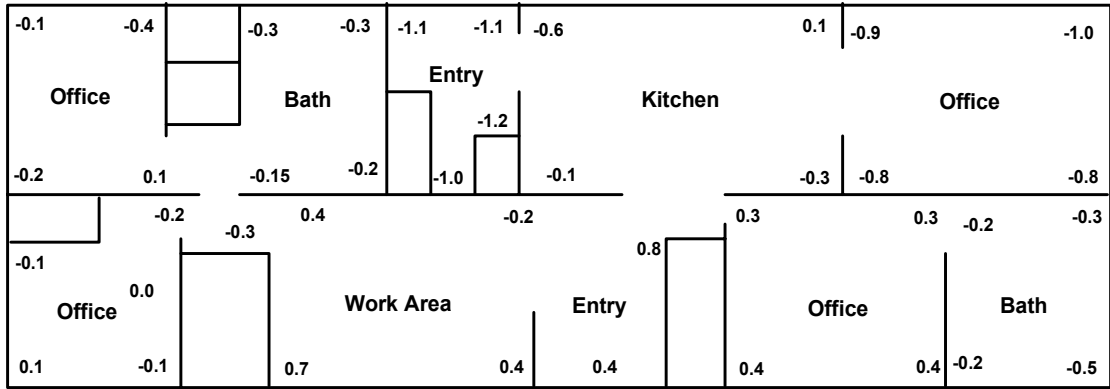


TD-WV2

10 ft.



TD-WV2 double wide trailer

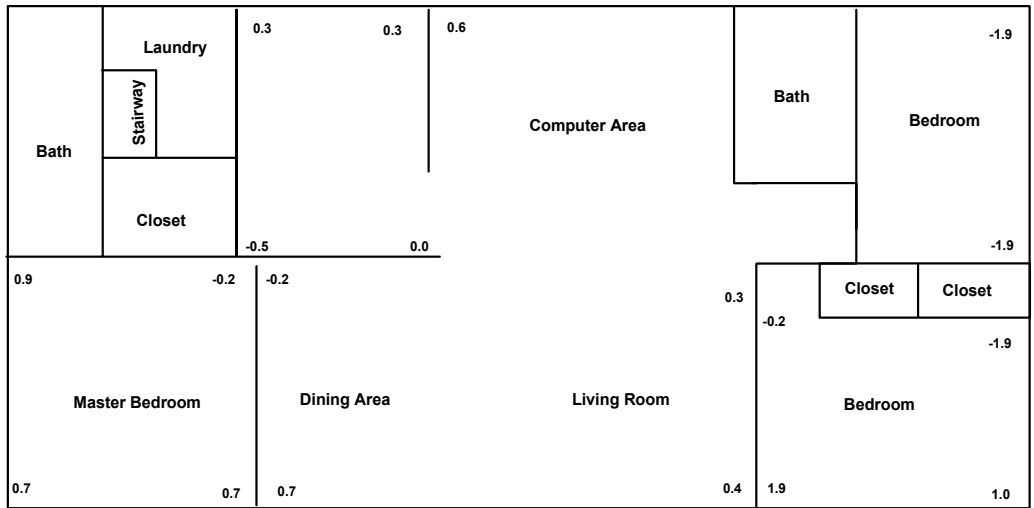


TD-TN

10 ft.



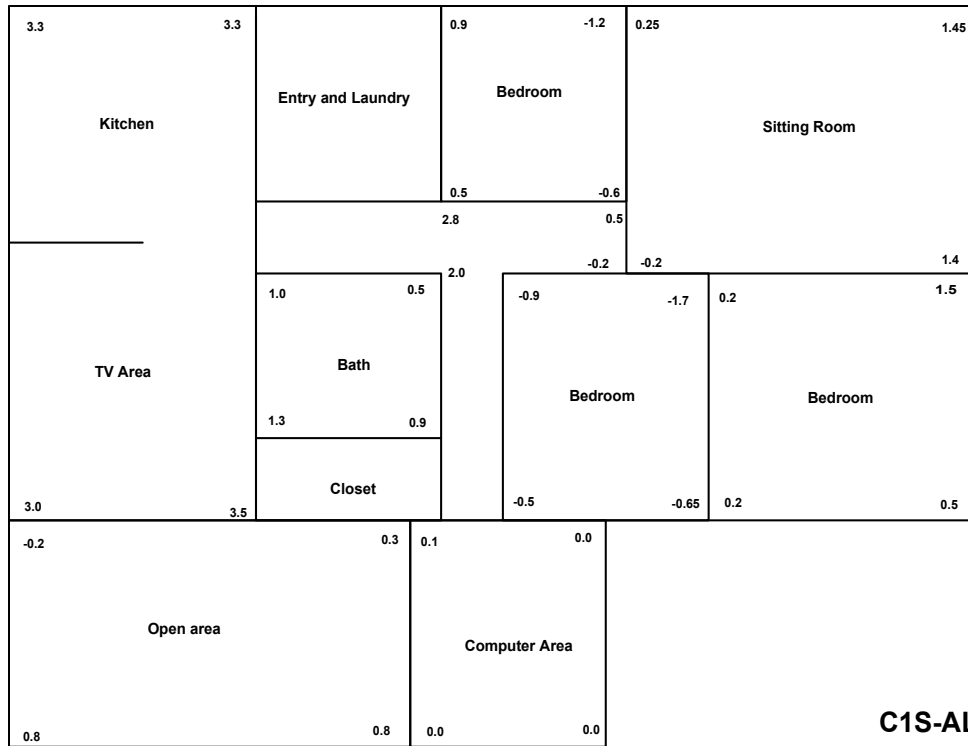
TD-TN double wide trailer



TD-PA
5 ft.



PD-PA double wide trailer with full basement

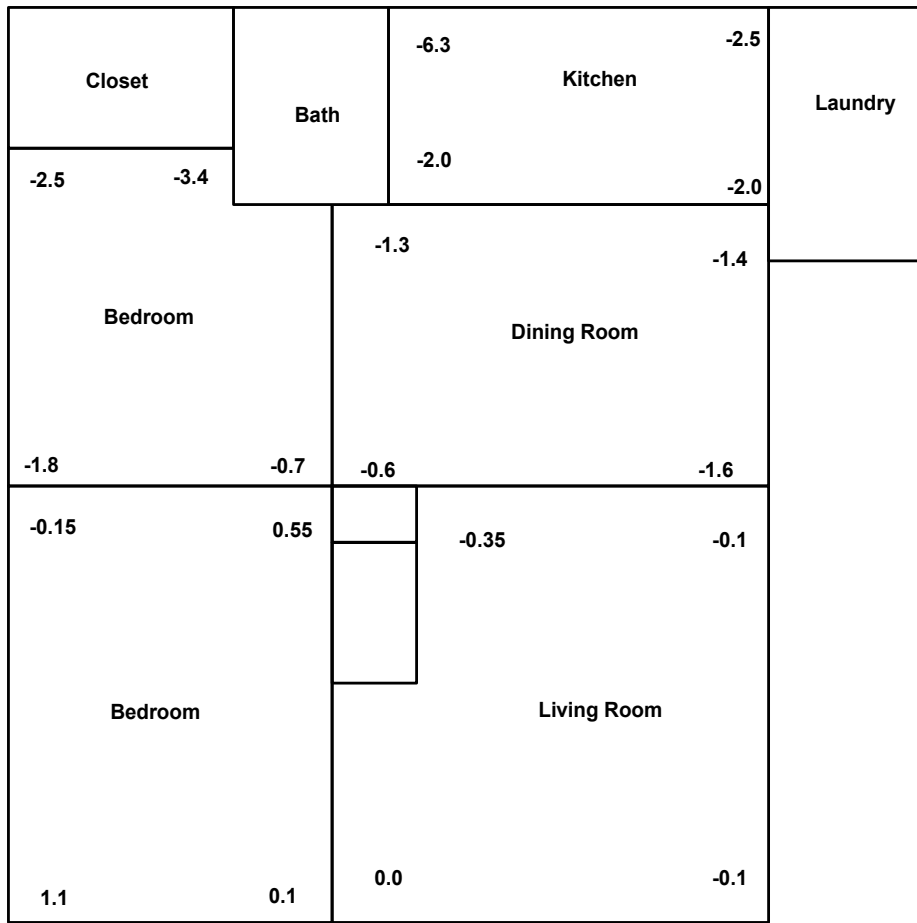


C1S-AL

5 ft.



C1S-AL camp house

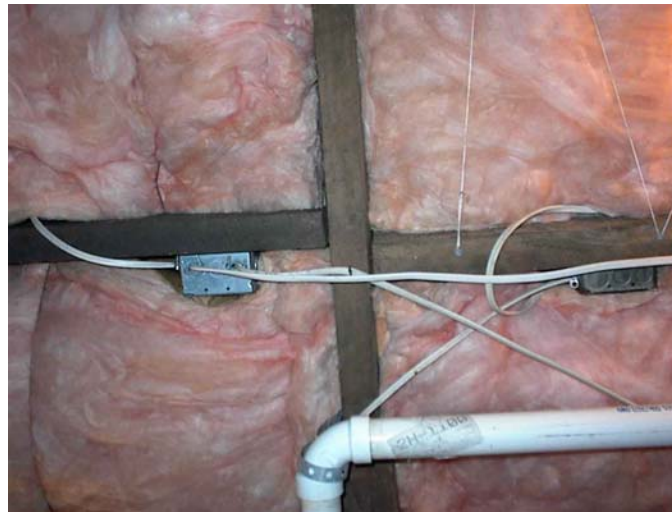


N ↙

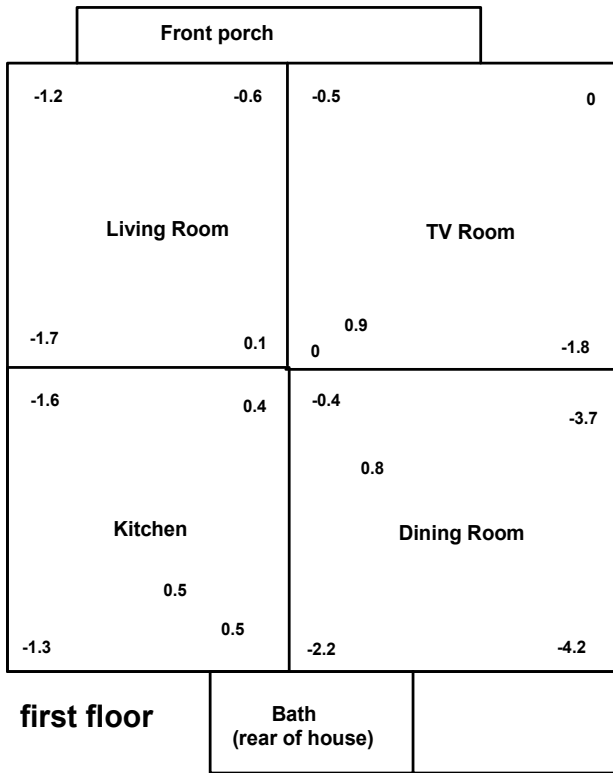
C1S-VA
5 ft



C1S-VA camp house



C1S-VA (cont.) camp house



second floor

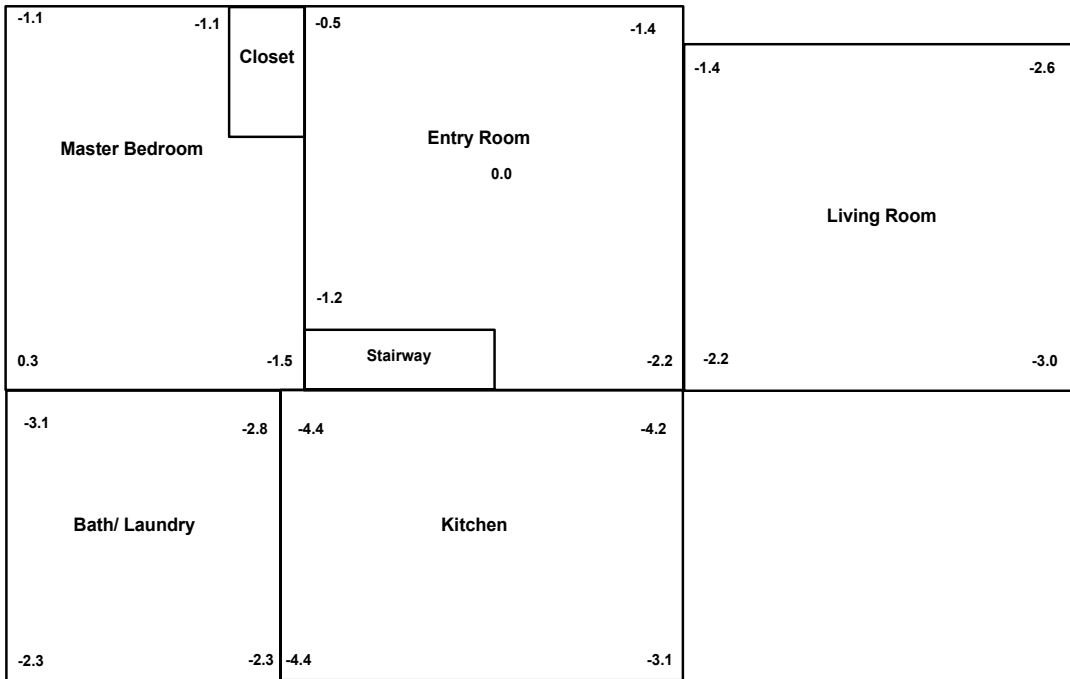
C2S-KY1a



5 ft.



C2S-KYA Two story camp house



first floor

C2S-KY1b
5 ft.



second floor

C2S-KY1b
5 ft.

C2S-KY1B Two story camp house

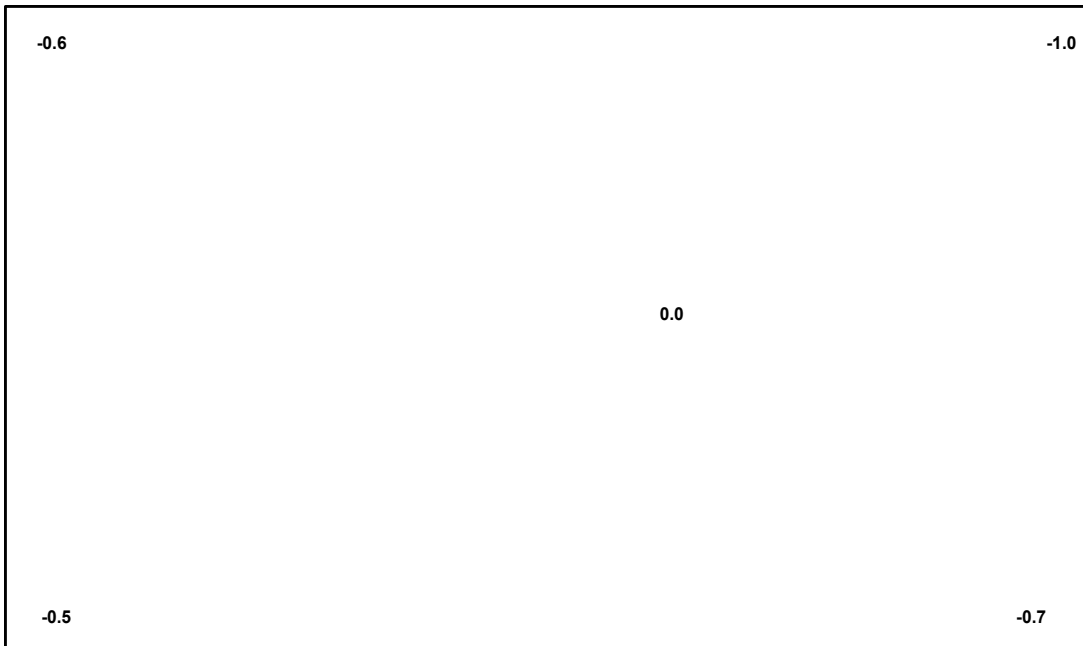


C2S-KY1B Two story camp house



L1S-OH

5 ft.



basement

L1S-OH

5 ft.

L1S-OH Traditional log house



L1S-OH (cont.) Traditional log house



N

L1S-WV1

5 ft.



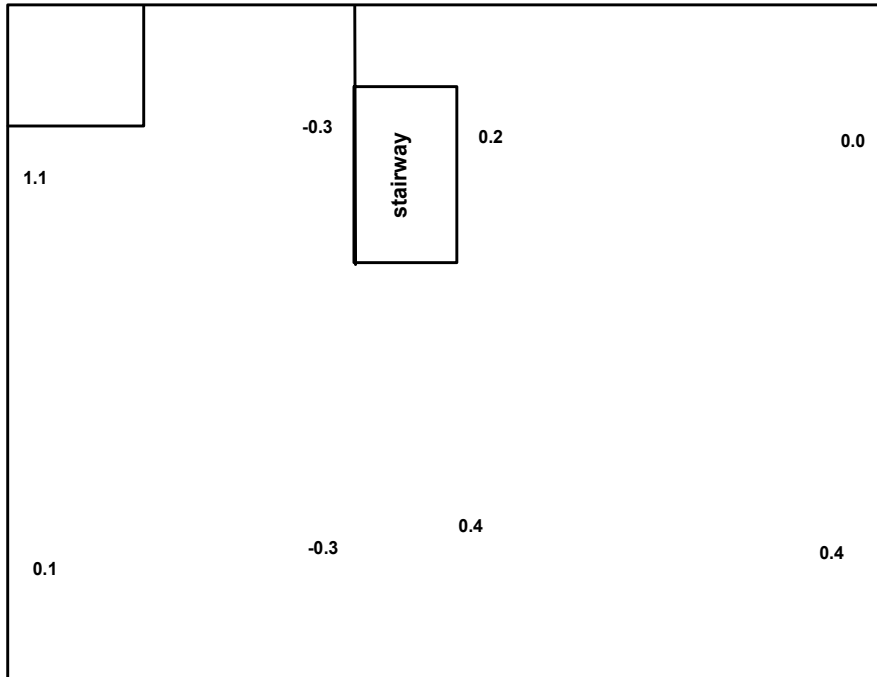
L1S-WV1 Historic log structure



first floor

L2S-TN

10 ft.



second floor

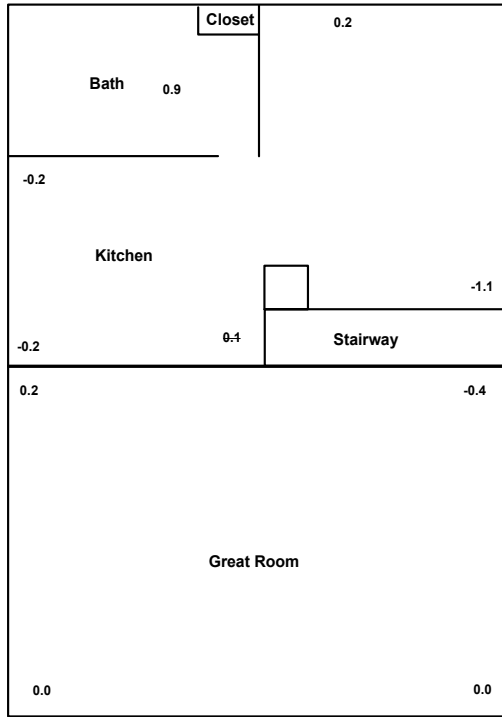
L2S-TN

10 ft.

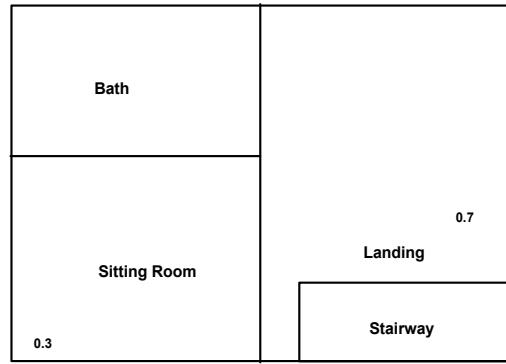
L2S-TN Two-story log house



L2S-TN (cont.) Two-story log house



first floor



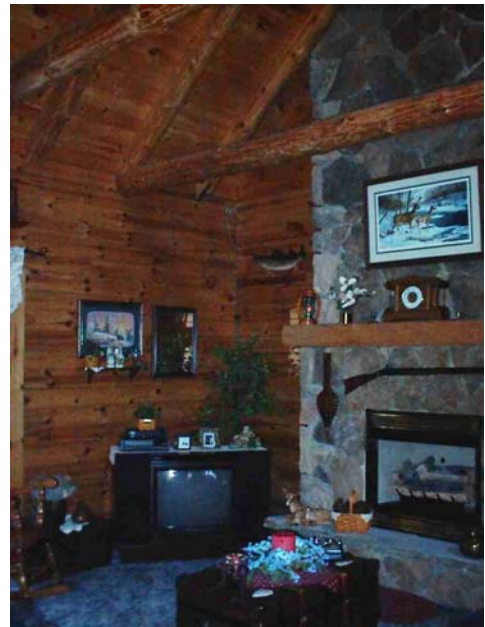
second floor



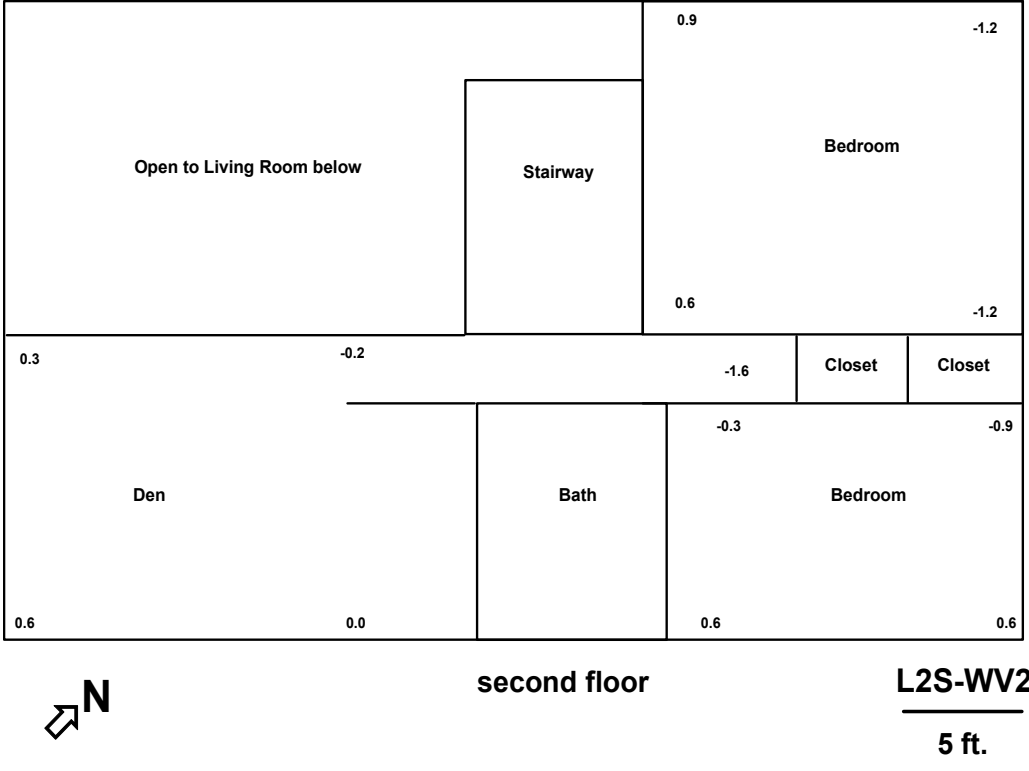
N

L2S-0H

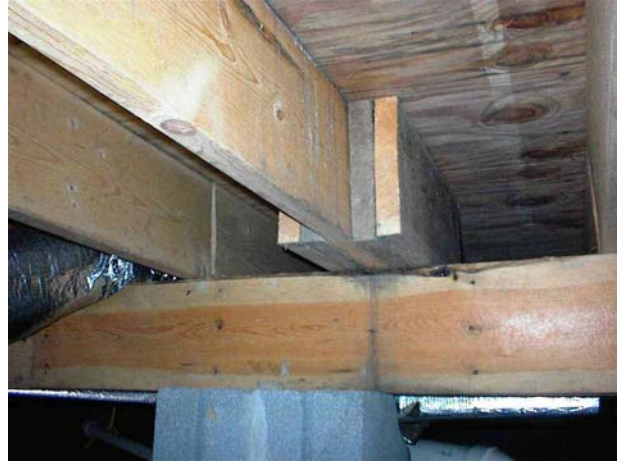
5 ft.



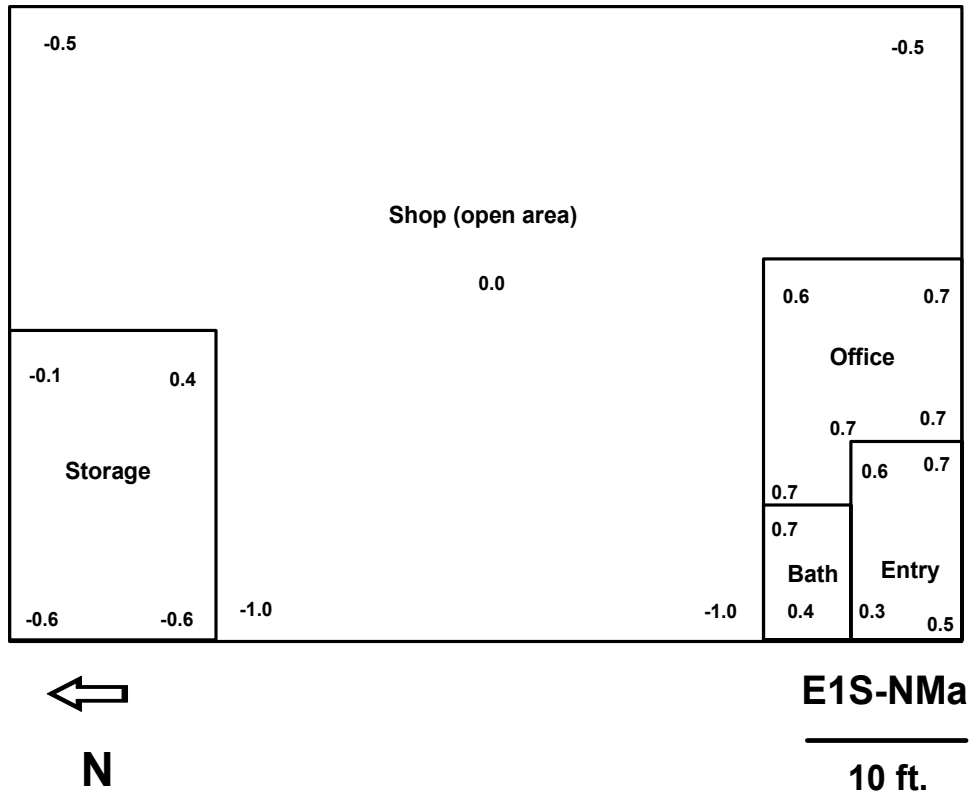
L2S-OH Two-story log house



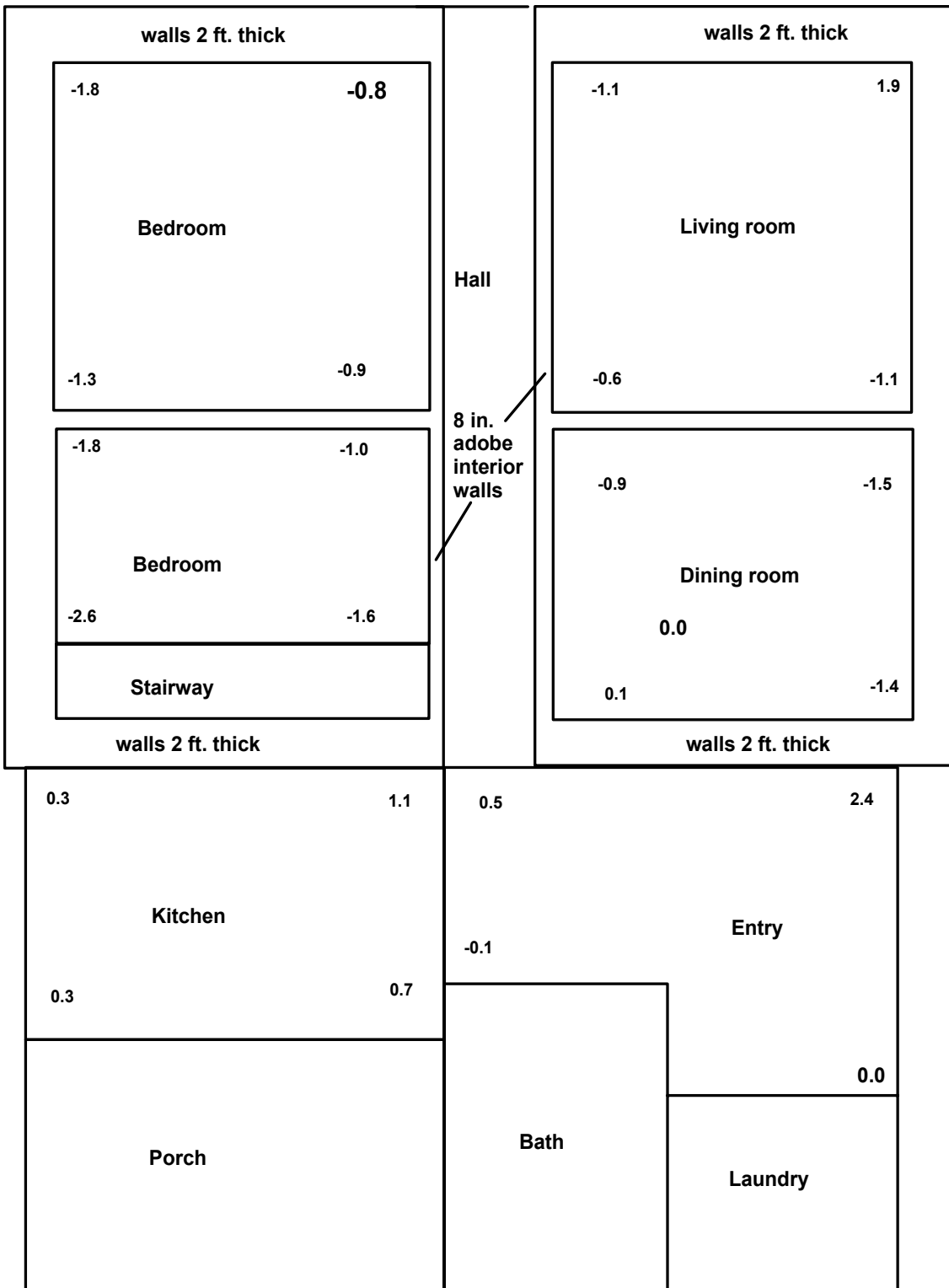
L2S-WV2 Two-story log house



L2S-WV2 Two-story log house



E1S-NMa Concrete block structure

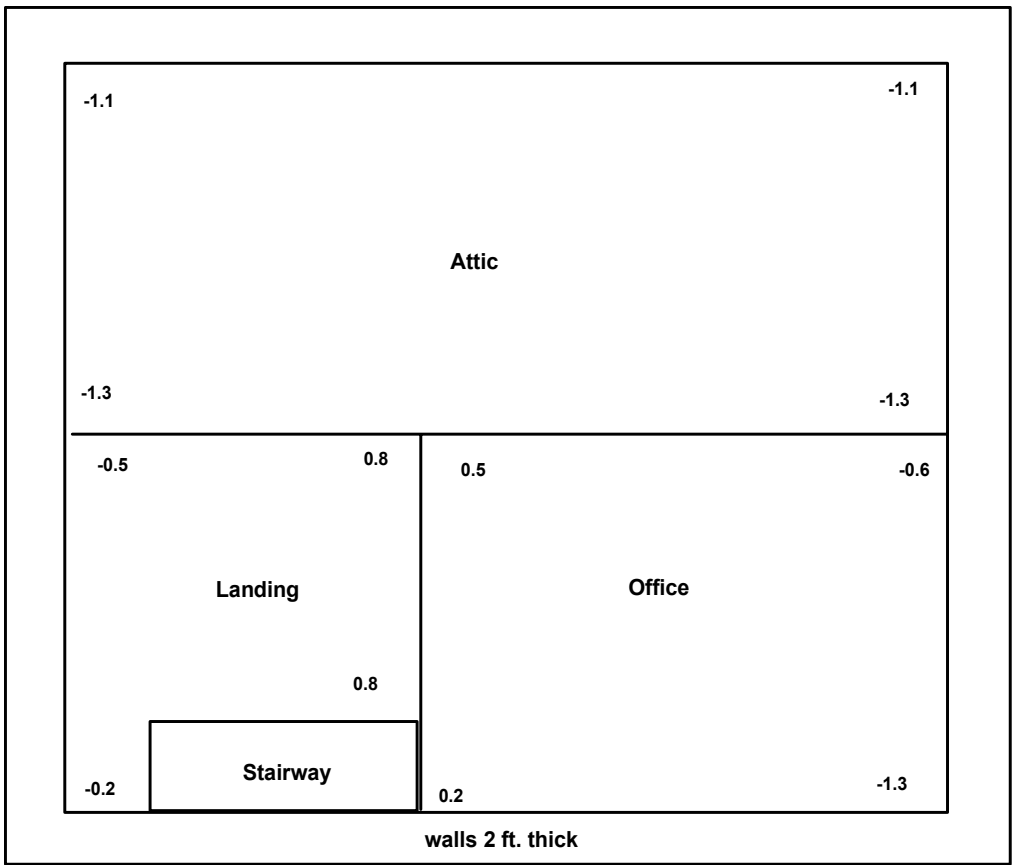


first floor

E2S-NM

5 ft.

E2S-NM Two-story stone house



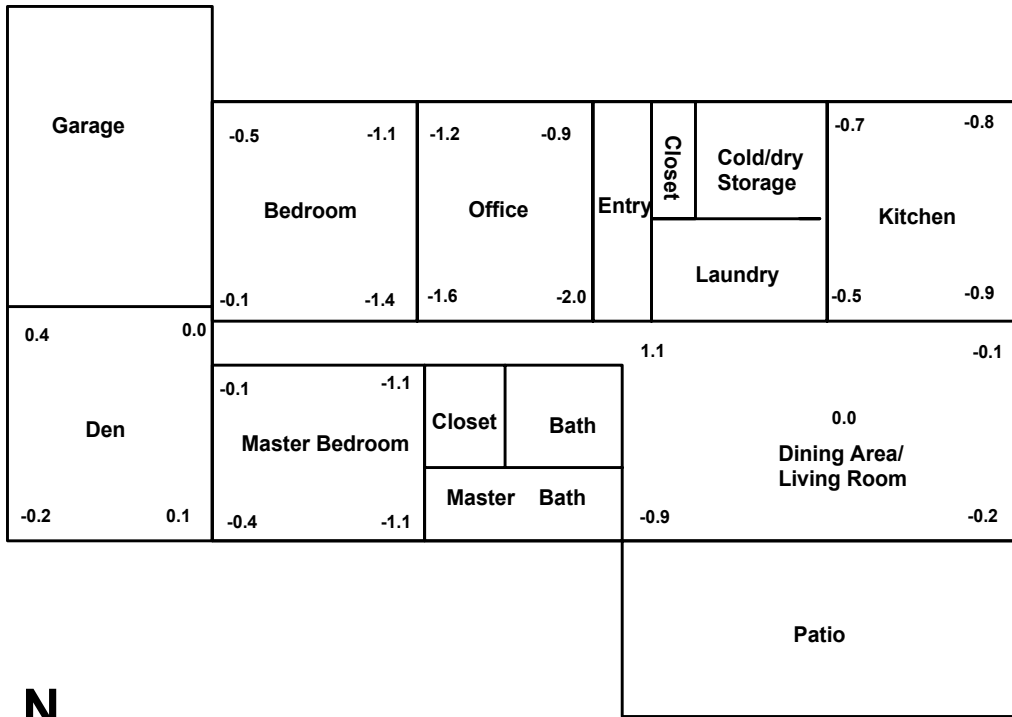
second floor

E2S-NM

5 ft.



E2S-NM (cont.) Two-story stone house



E1S-NMb
10 ft.



E1S-NMB Traditional adobe house

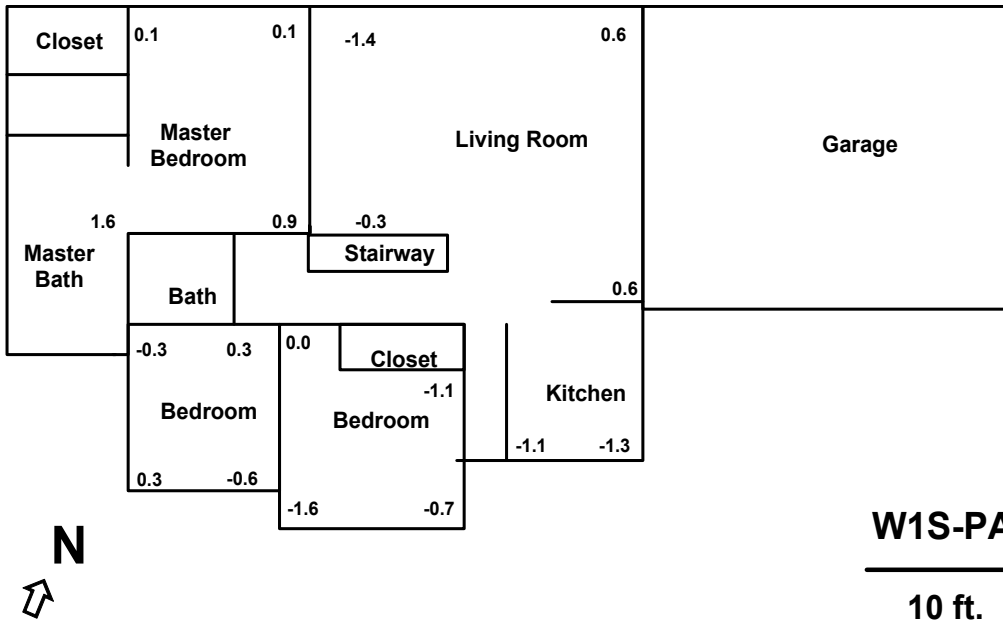


W1S-IN

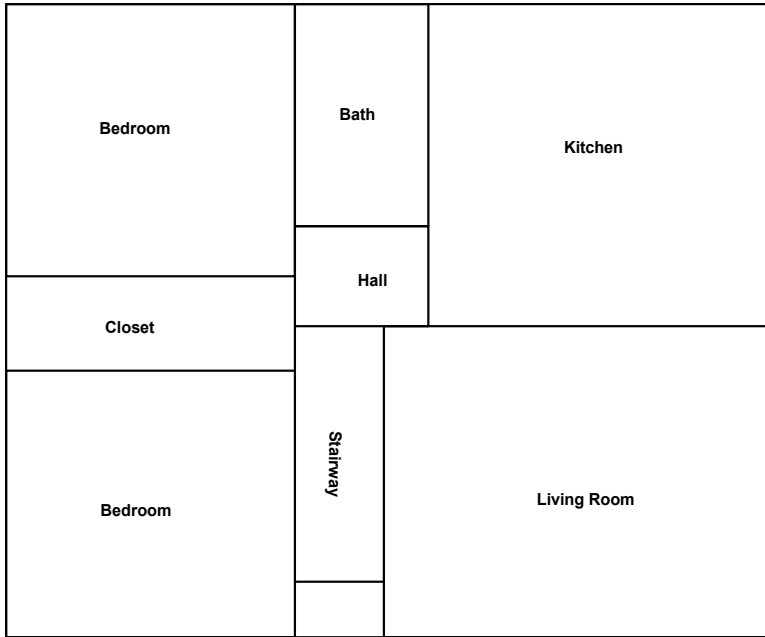
5 ft.



W1S-IN Wood-frame house

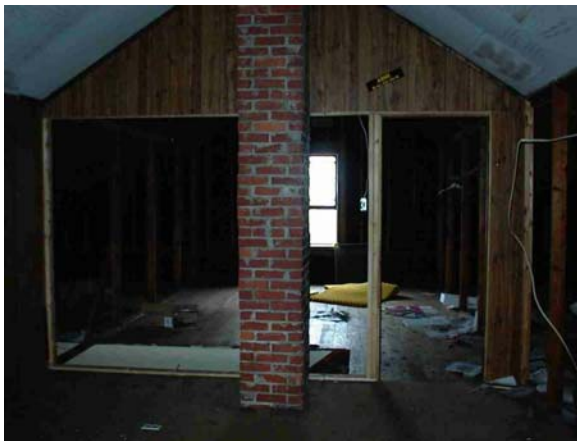


W1S-PA Wood-frame house under construction

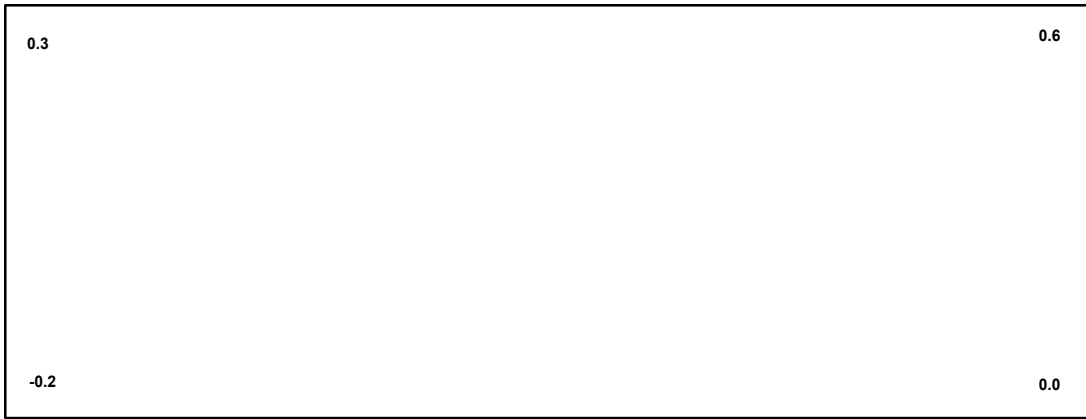


N ←

W2S-IN
5 ft.



W2S-IN Wood-frame house



N

first floor

W3S-WV1

5 ft.

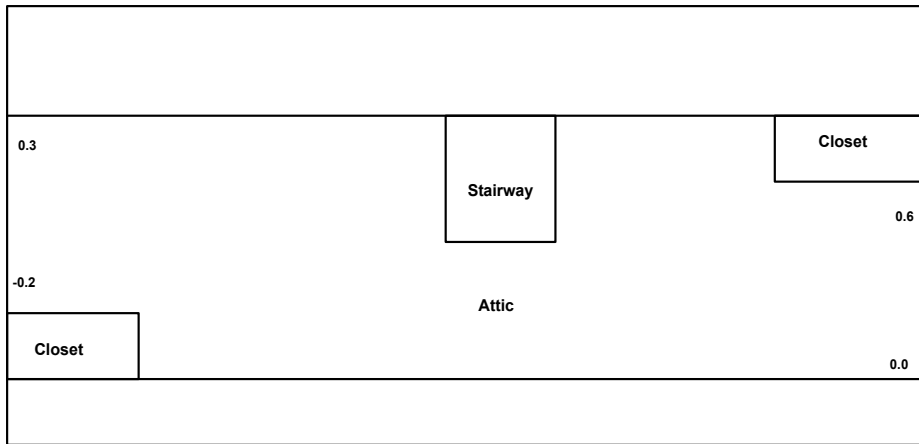


N

second floor

W3S-WV1

5 ft.



N

third floor

W3S-VV1

5 ft.

W3S-WV1 Three-story cantilever house



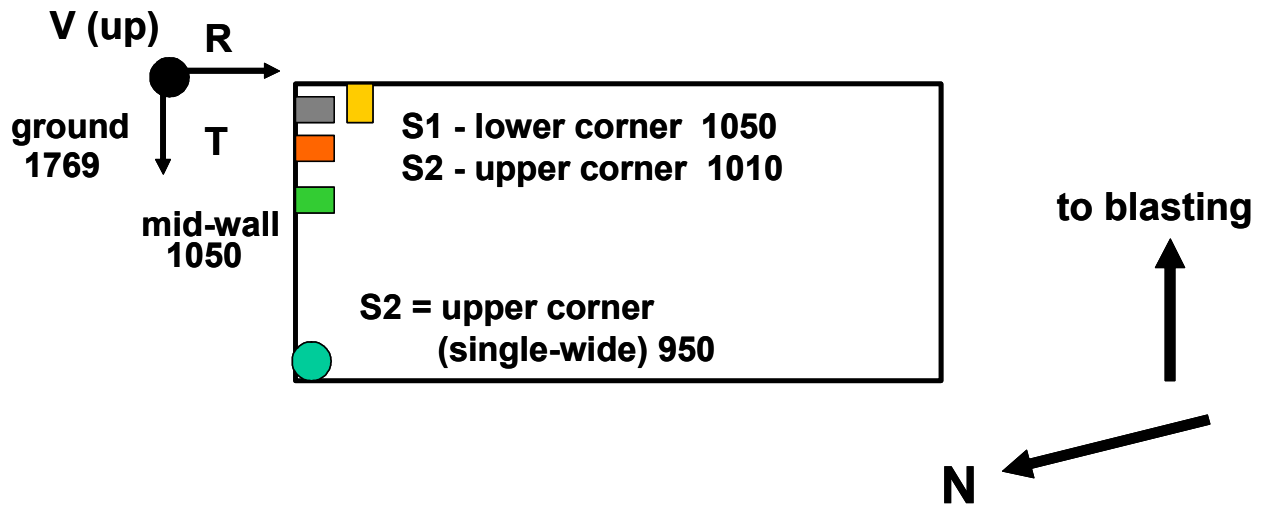
W3S-WV1 (cont.) Three-story cantilever house

APPENDIX II

Instrumentation Locations

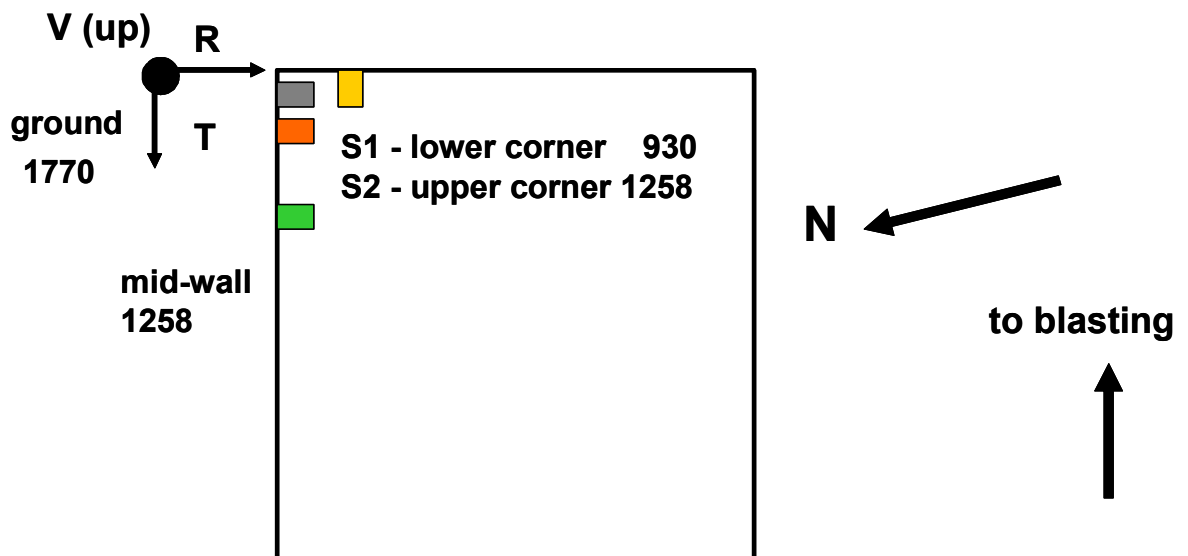
- Radial
- Transverse
- Vertical
- Mid-wall (R)

TSA-VA
single-wide and
wood-frame add-on



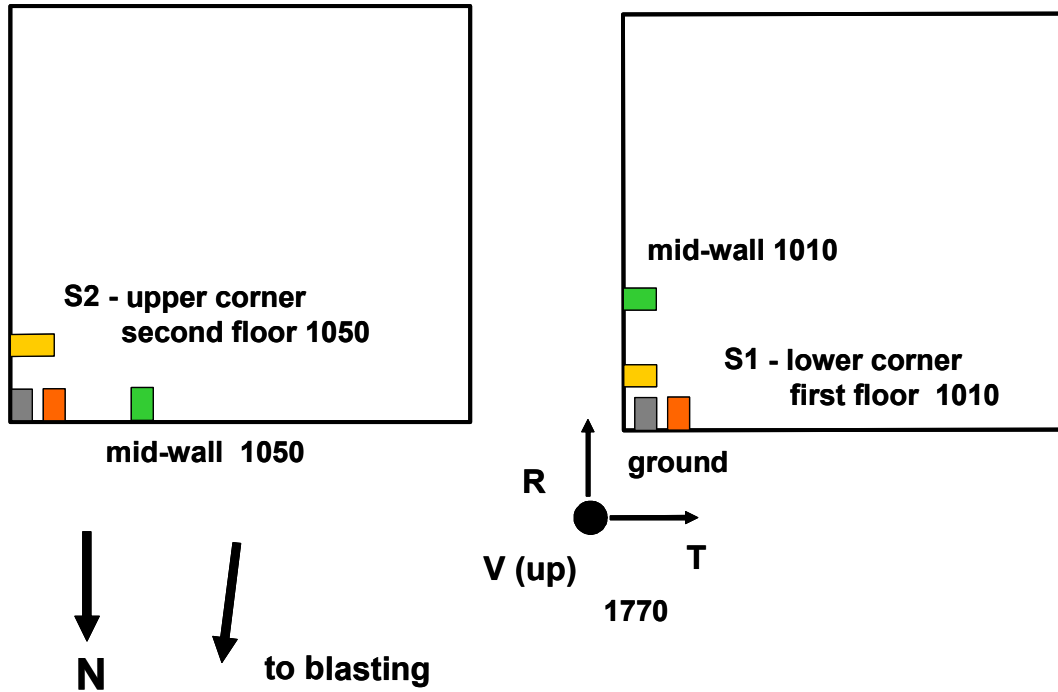
- Radial
- Transverse
- Vertical
- Mid-wall (R)

C1S-VA
single-story wood-post
camp house



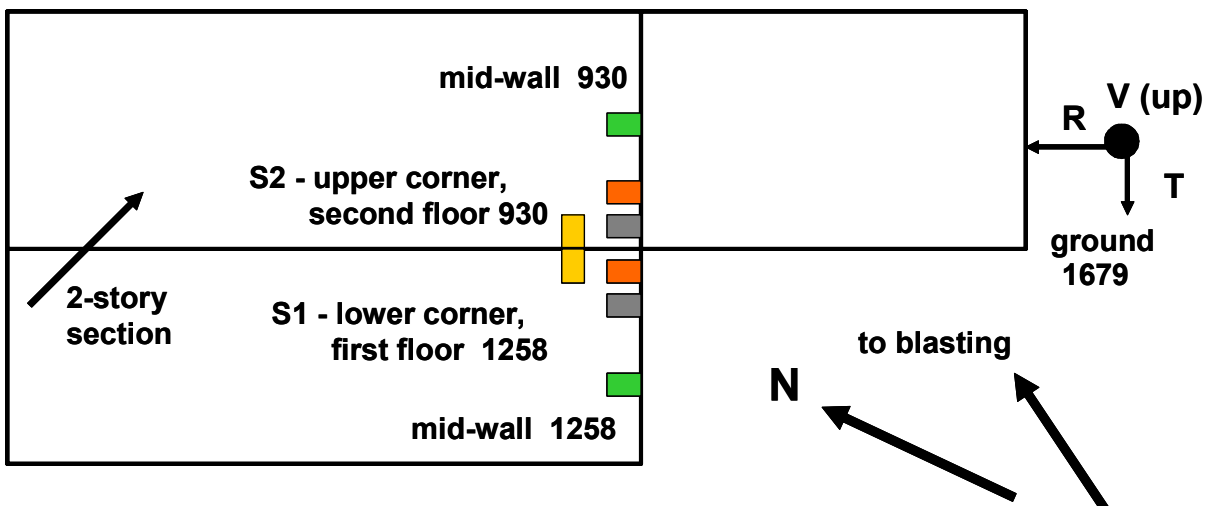
- Radial
- Transverse
- Vertical
- Mid-wall (R or T)

C2S-KY1A
2-story, wood post
camp house



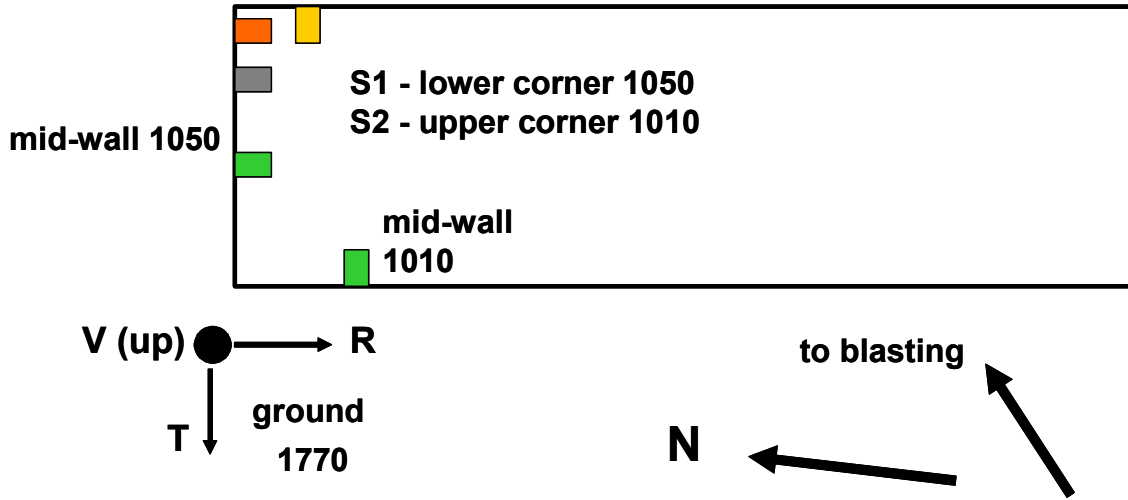
- Radial
- Transverse
- Vertical
- Mid-wall (R)

C2S-KY1B
2-story, wood frame
wood-post and CMU support



- Radial
- Transverse
- Vertical
- Mid-wall (R or T)

TS-KY2
single-wide,
CMU support



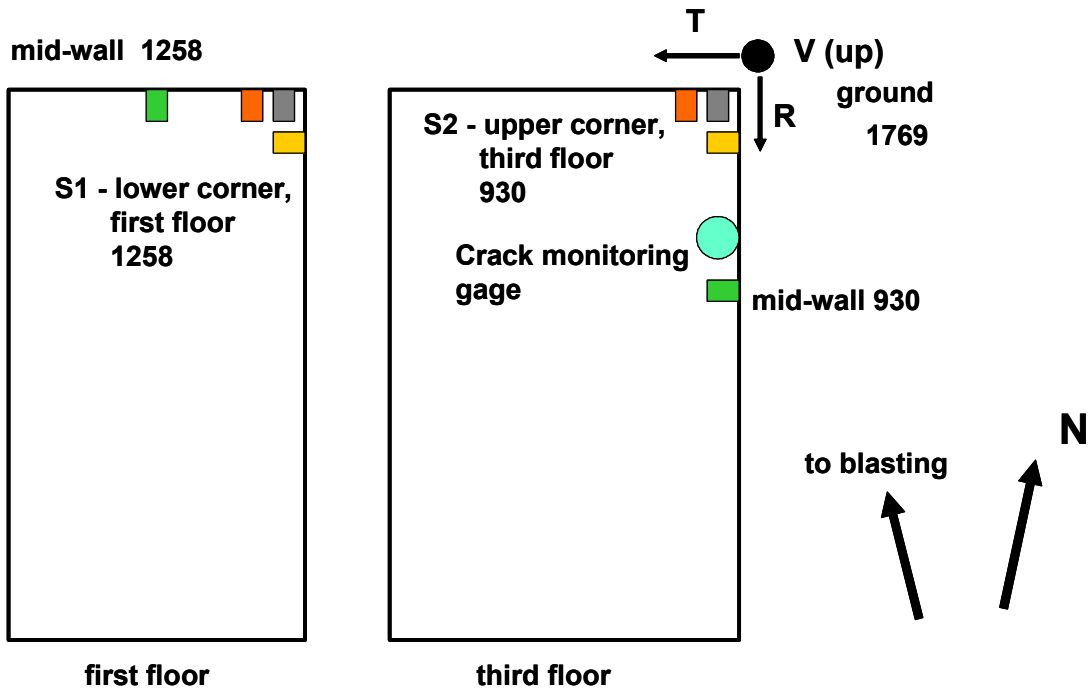
- Radial
- Transverse
- Vertical
- Mid-wall (R or T)

TSA-KY2
single-wide, add-on
wood frame, CMU support



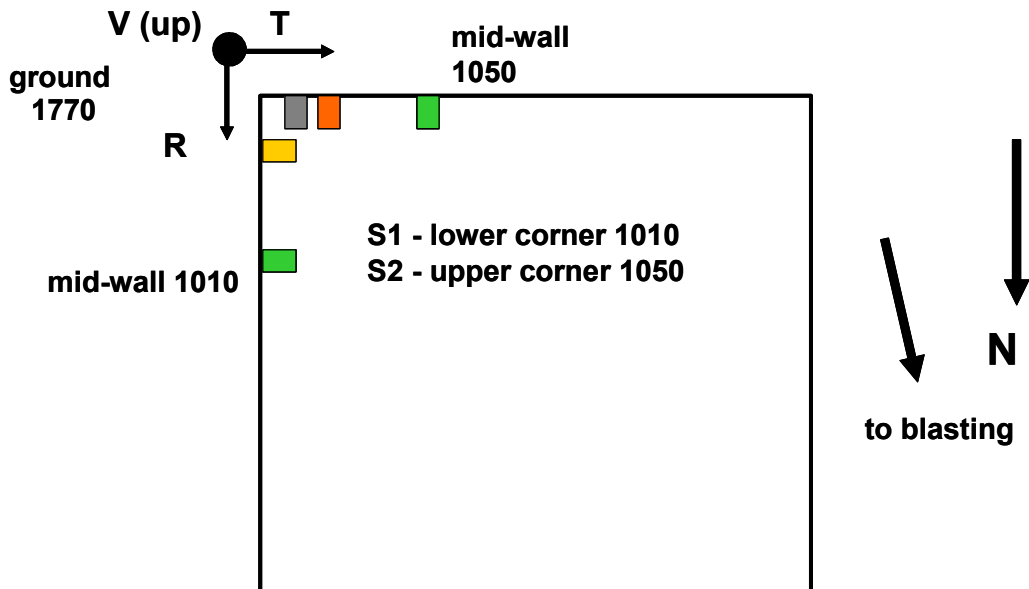
- Radial
- Transverse
- Vertical
- Mid-wall (R or T)

W3S-WV1
 3-story, slab floor, wood
 frame, upper floors cantilevered



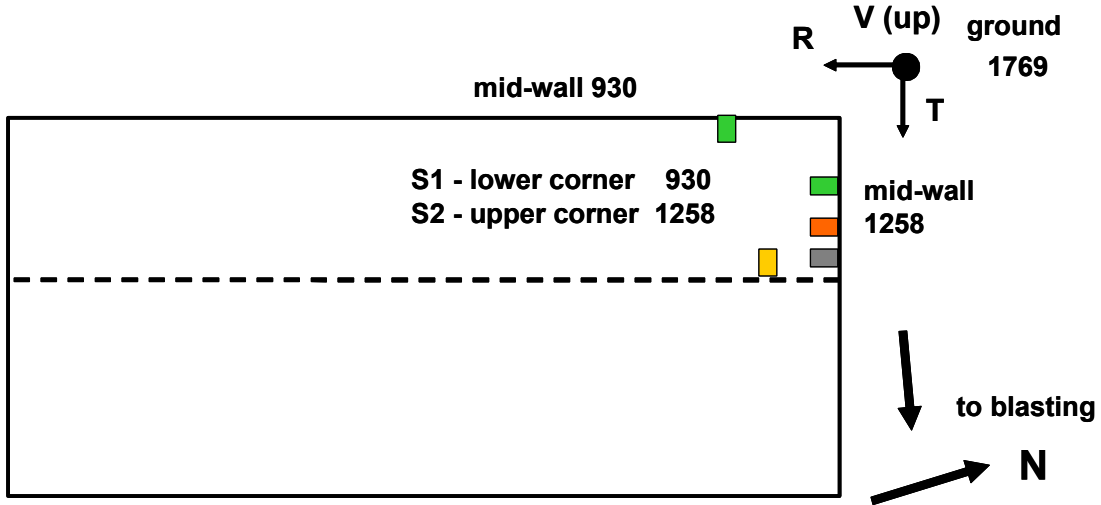
- Radial
- Transverse
- Vertical
- Mid-wall (R or T)

L1S-WV1
 one-story log cabin
 wood post



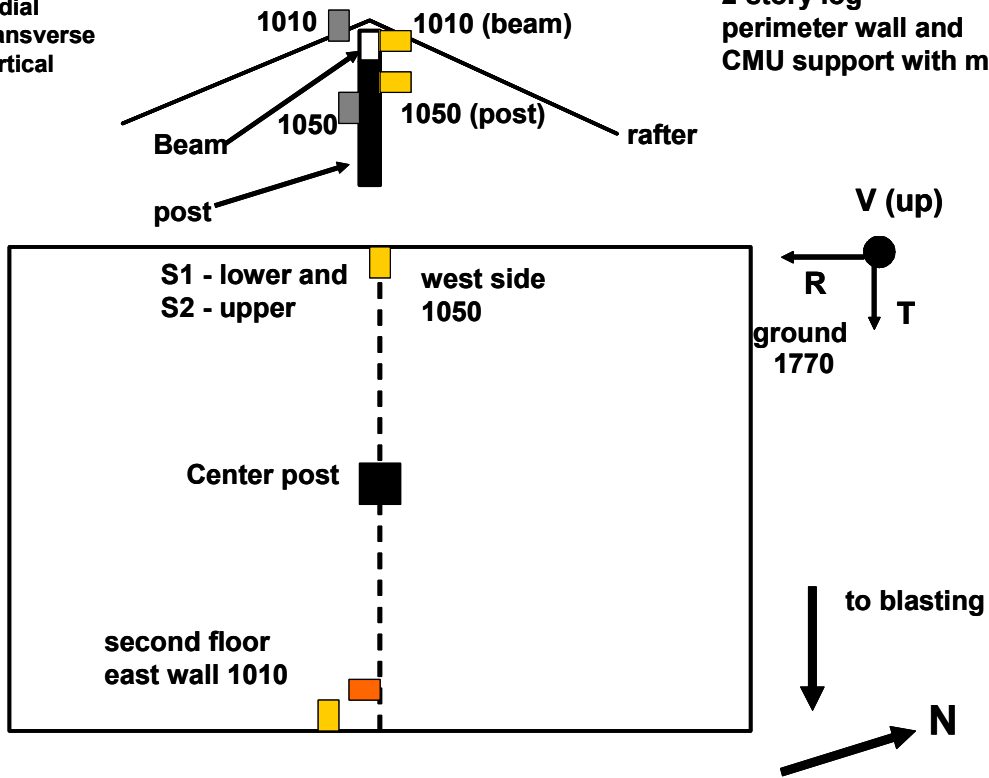
- Radial
- Transverse
- Vertical
- Mid-wall (R or T)

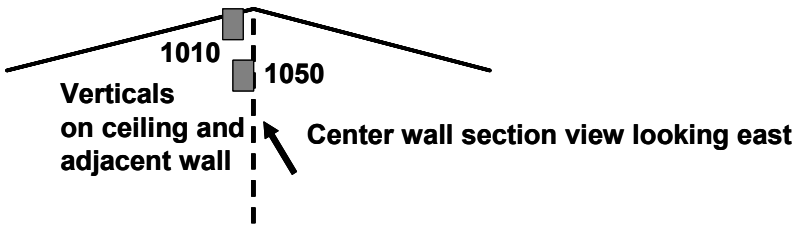
TD-WV2
double-wide
CMU support



- Radial
- Transverse
- Vertical

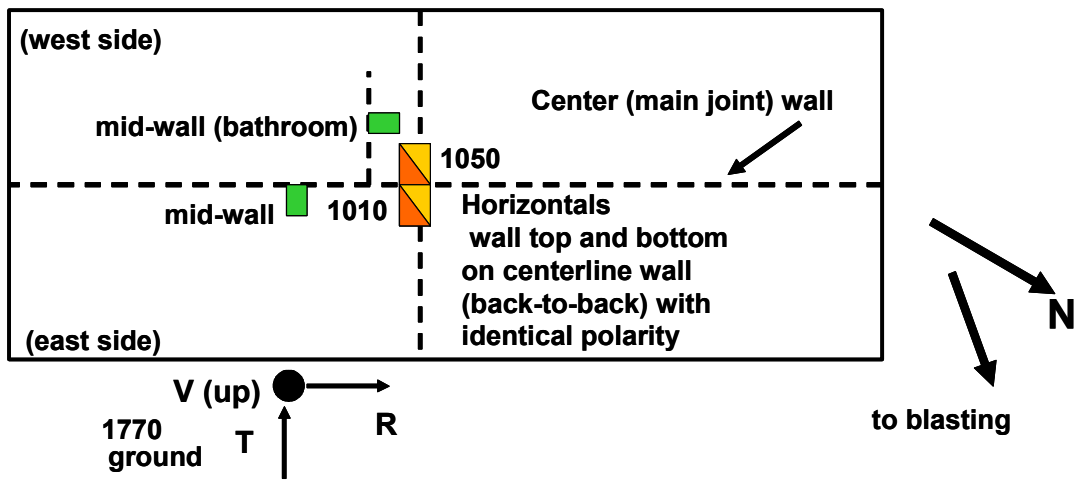
L2S-WV2
2-story log
perimeter wall and
CMU support with mortar





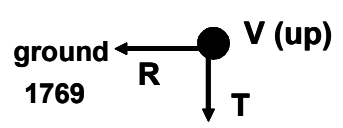
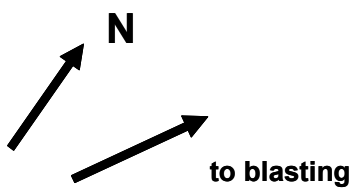
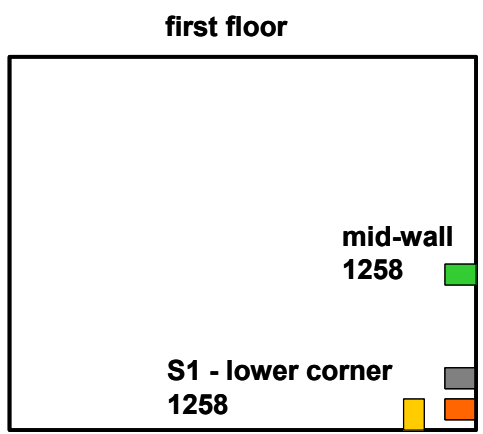
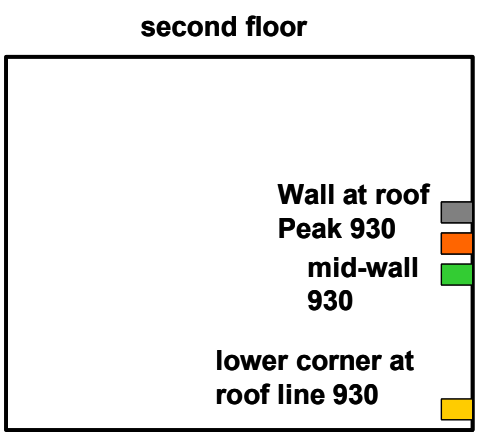
TD-TN
 double-wide
 CMU support
 with strapping

- Radial
- Transverse
- Vertical
- Mid-wall (R or T)



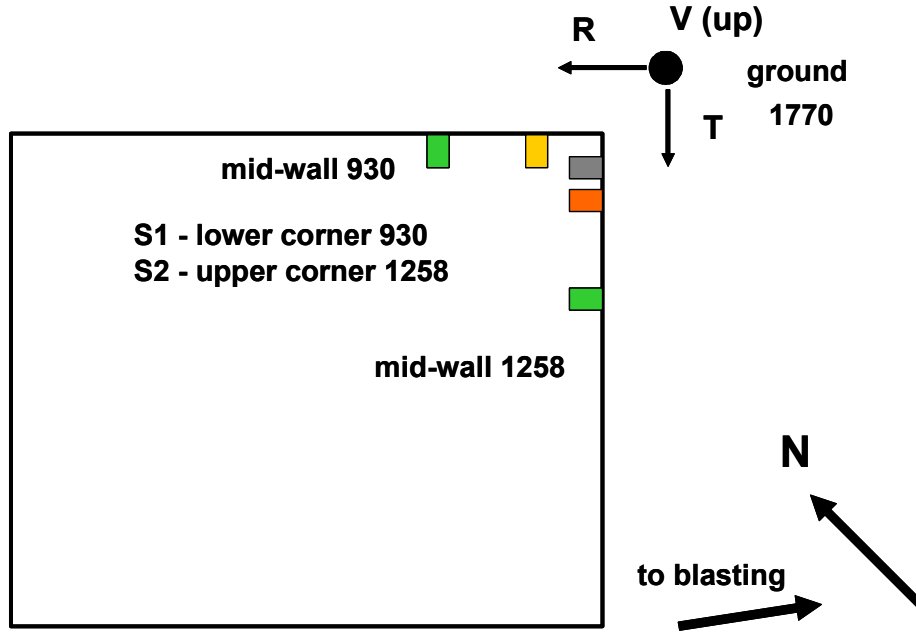
- Radial
- Transverse
- Vertical
- Mid-wall (R)

L2S-TN
 log structure
 CMU support



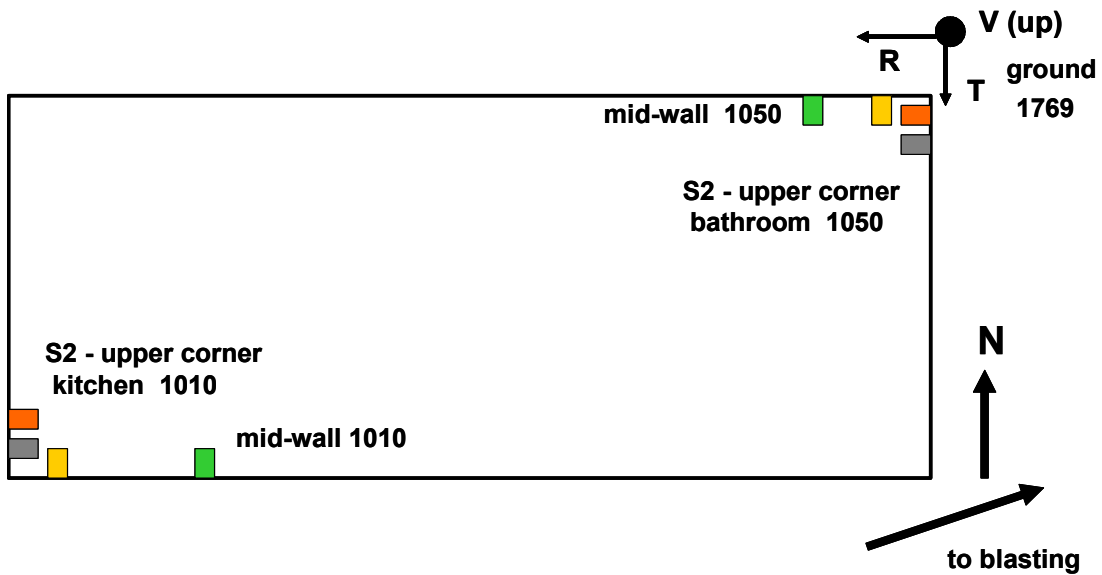
- Radial
- Transverse
- Vertical
- Mid-wall (R or T)

C1S-AL
 camp house
 CMU interior and exterior; slab add-on



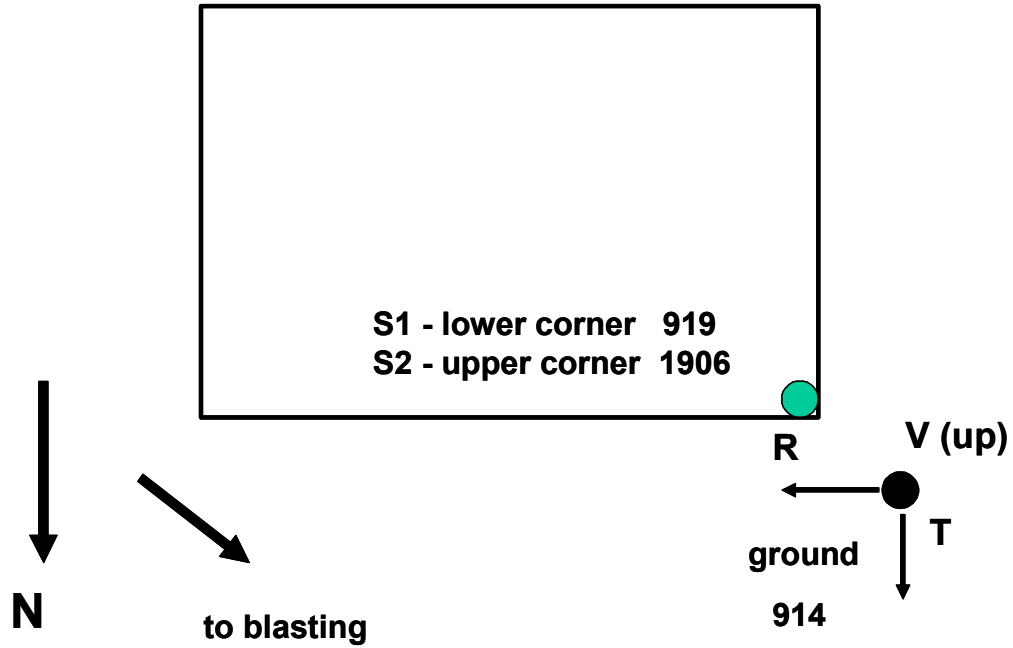
- Radial
- Transverse
- Vertical
- Mid-wall (T)

TS-AL
 single-wide
 CMU support with exterior straps



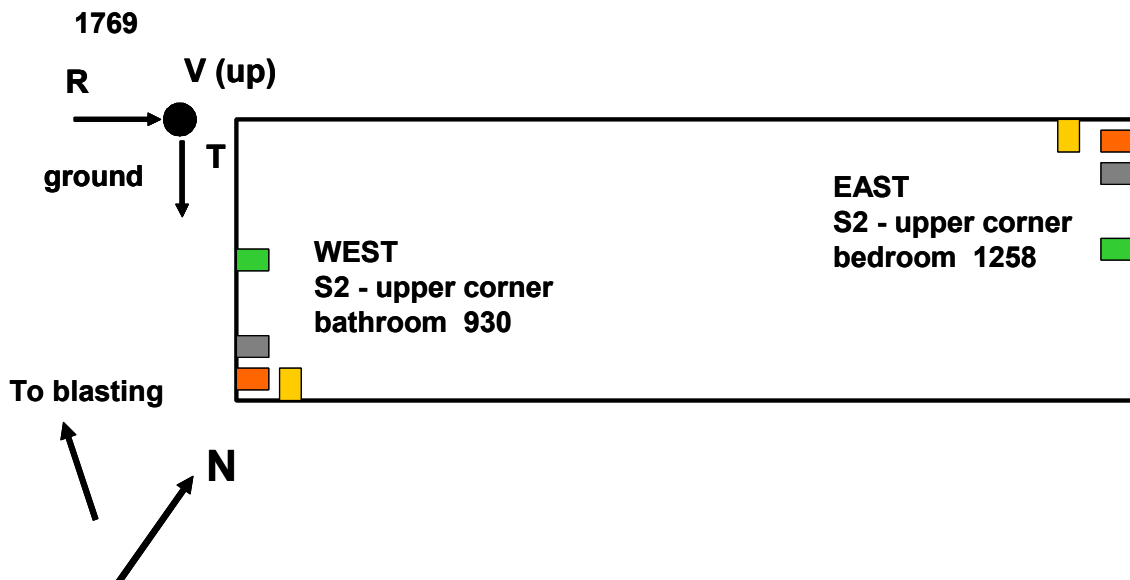
● 3-component transducer

L1S-OH
log structure,
poured concrete
basement floor/walls



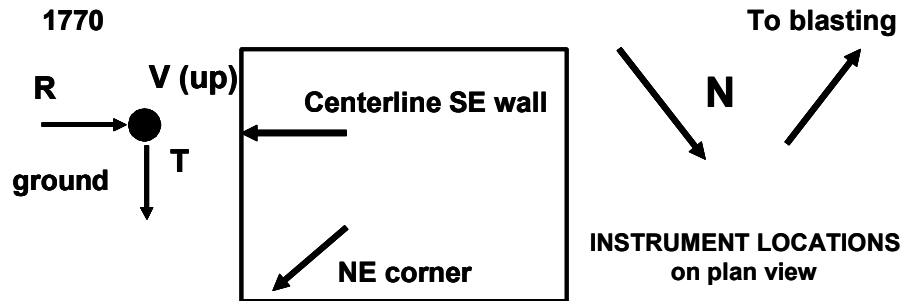
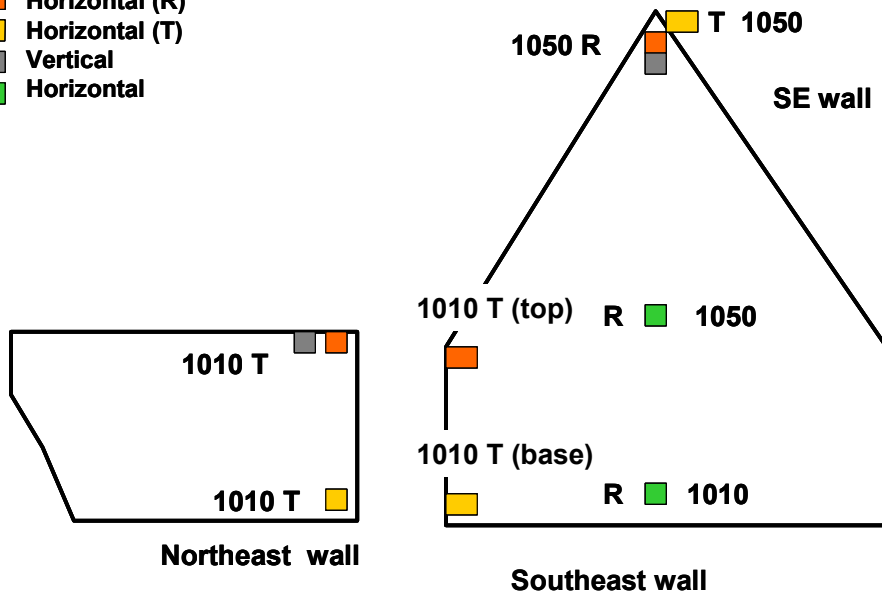
- Radial
- Transverse
- Vertical
- Mid-wall (R)

TS-OH
single-wide trailer
CMU piers with
exterior straps



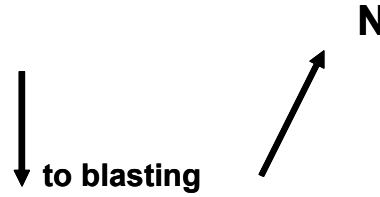
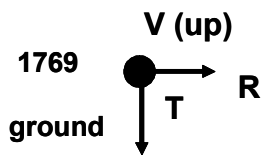
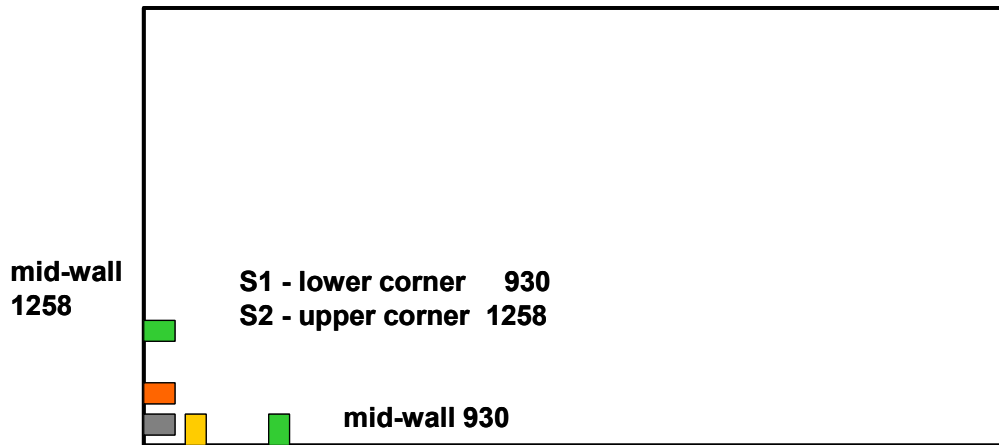
- Horizontal (R)
- Horizontal (T)
- Vertical
- Horizontal

L2S-OH
log structure,
poured concrete
basement
floor/walls



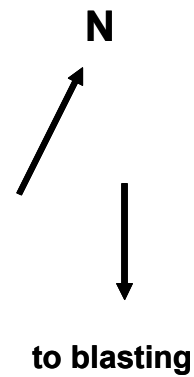
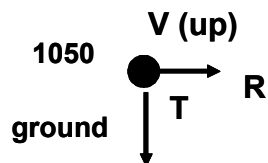
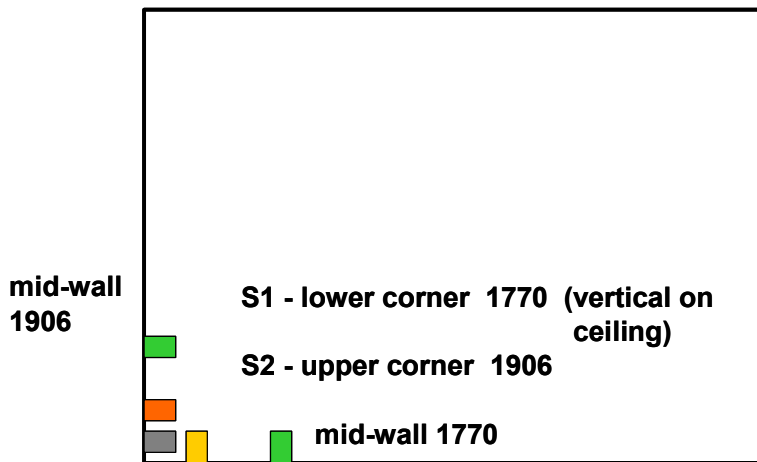
- Radial
- Transverse
- Vertical
- Mid-wall (R or T)

TD-PA
 double-wide
 concrete block basement



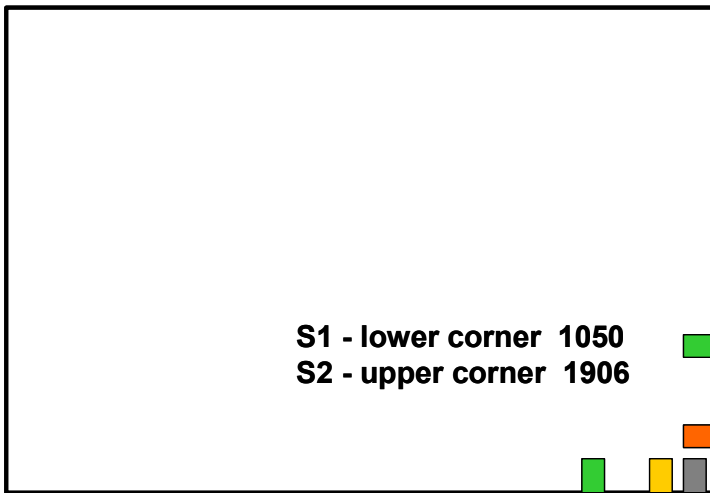
- Radial
- Transverse
- Vertical
- Mid-wall (R or T)

W1S-PA
 Wood-frame
 Concrete block basement



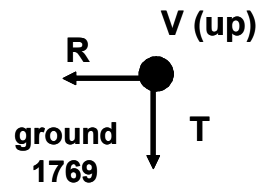
- Radial
- Transverse
- Vertical
- Mid-wall (R or T)

E1S-NMB
Adobe



mid-wall
1050

mid-wall 1906

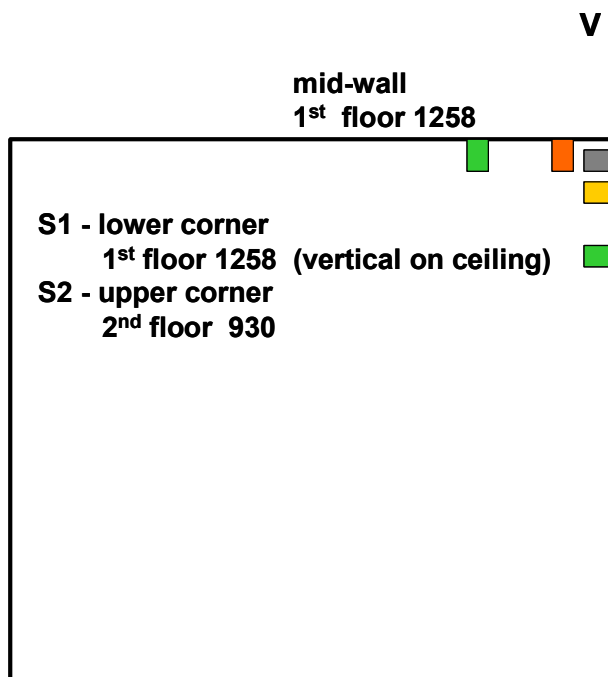


N

to blasting

- Radial
- Transverse
- Vertical
- Mid-wall (R or T)

E2S-NM
Two-story stone
adobe interior
walls on flagstone
wall footings



mid-wall
1st floor 1258

V (up)

R

T
ground
1770

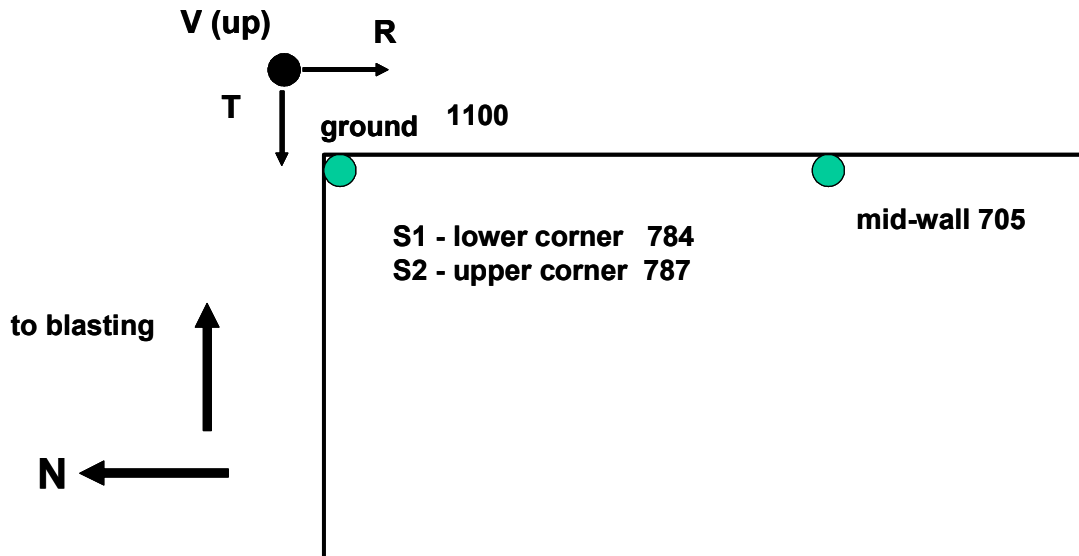
mid-wall
2nd floor 930

to blasting

N

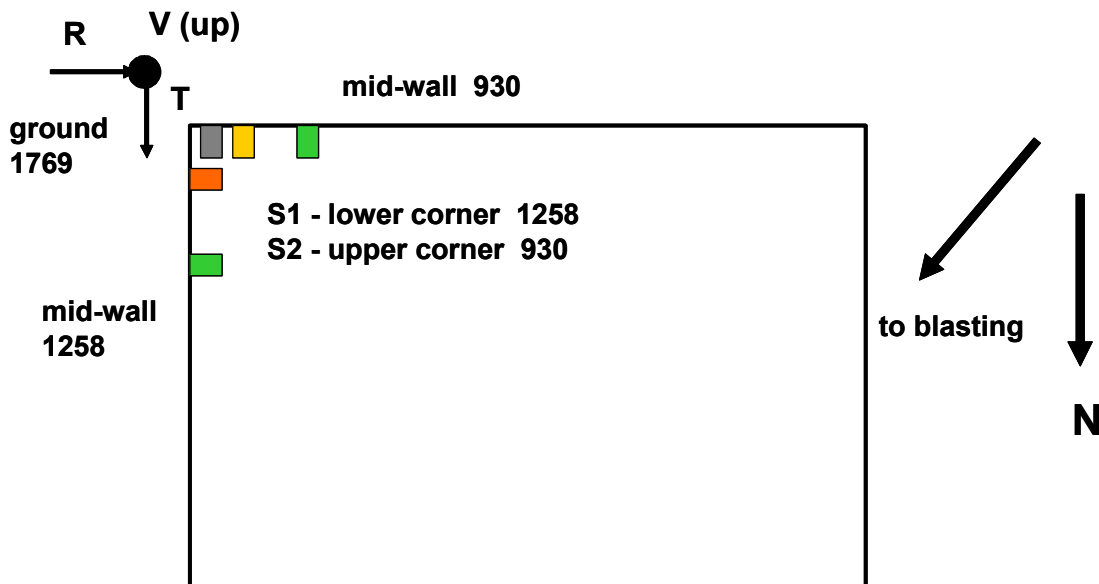
● 3-component transducer

E1S-NMA
Concrete Block
on 6 in. slab



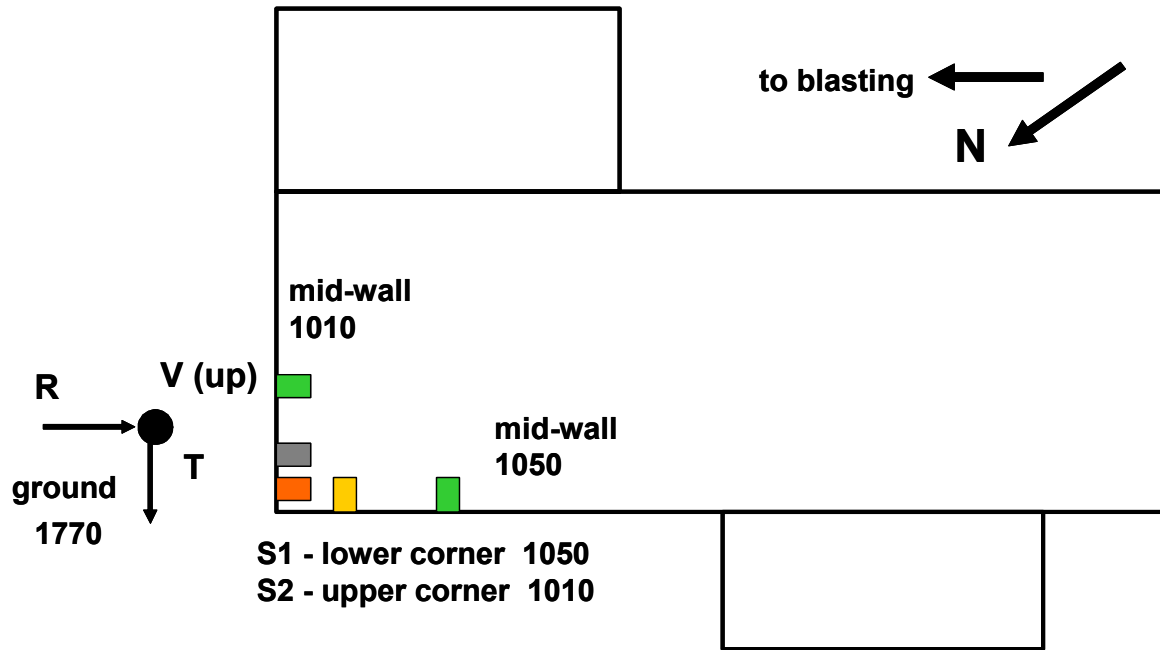
- Radial
- Transverse
- Vertical
- Mid-wall (R or T)

W1S-IN
Wood-frame
Concrete block basement



- Radial
- Transverse
- Vertical
- Mid-wall (R or T)

TS-IN
Single-wide
trailer



- Radial
- Transverse
- Vertical
- Mid-wall (R or T)

W2S-IN
Wood frame
Concrete block
basement

