

Road Services Division



King Street Center

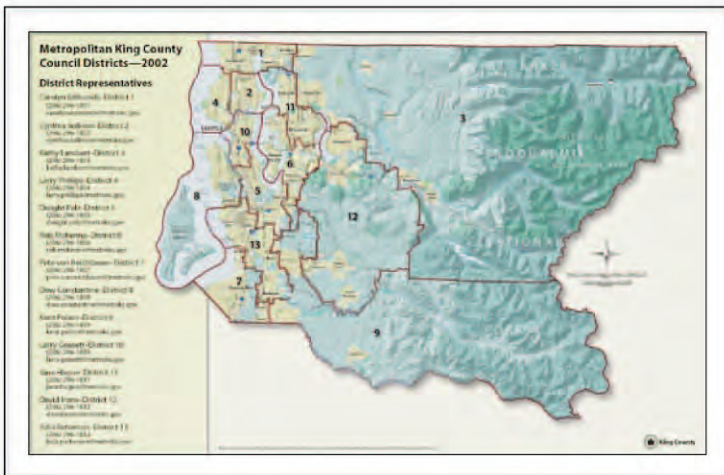
The Map & Records Center personnel routinely research locations within the county by referencing the Section, Township and Range of the area in question. This description can be located using various documents, such as a Deed of Trust, Tax Statement, Kroll Map, Assessor Map, Plat Map, etc. Typical services provided for purchase include copies of:

- Records of Road Establishments
- Survey Field Books of County Surveys
- Road Inspection Books for historical Road Projects
- County Road Design and As-Built Plan Sets
- Horizontal and Vertical Datum from KCAS Datum
- G.L.O. Field Notes and Copies of Original Territorial Township Plat Maps
- Map of Record Plats in the Unincorporated County
- Topography Maps
- Contract Bid Documents
- Environmental Documentation
- King County Road Standards

Many of the services listed can be accomplished via the U.S. Postal Service. Please contact the Map & Records Center or at www.metrokc.gov/kcdot/roads/rwmap.htm for specific information and pricing guidelines.

Map & Records Center

The King County Roads Map & Records Center maintains mapping and historical survey data for the King County Road Services Division concerning roadway establishments, drainage plans, plats, road construction plan and profiles, and various other maps. In addition the Map & Records Center makes available copies of Topographic Maps from the U.S.G. S., Engineer's Maps from individual Plat Maps, and Section Corner locations.



Council District Map

Types of Maps Available

The following is a list of the maps available at the Map & Records Center as well as a brief description of the information which can be obtained from the map.

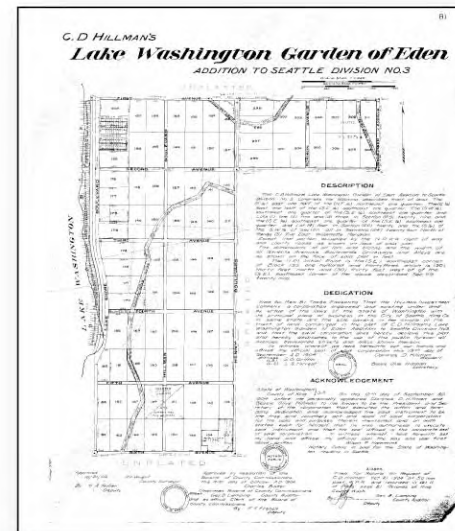
Plat Maps

These maps are legal documents that are filed with the County. They show the survey data, legal descriptions, restrictions, easement provisions,

dedications, covenants (if any), roadway right-of-way, lots, tracts and any other information pertaining to the plats. These maps may be ordered by Plat Name.

The Map & Records Center does not maintain a complete file of all plats recorded within King County. If the Map & Records Center does not hold your particular map, a copy may be obtained from the King County Records Division.

The scale on these maps vary. The finished size is 18" x 24".



Plat Map

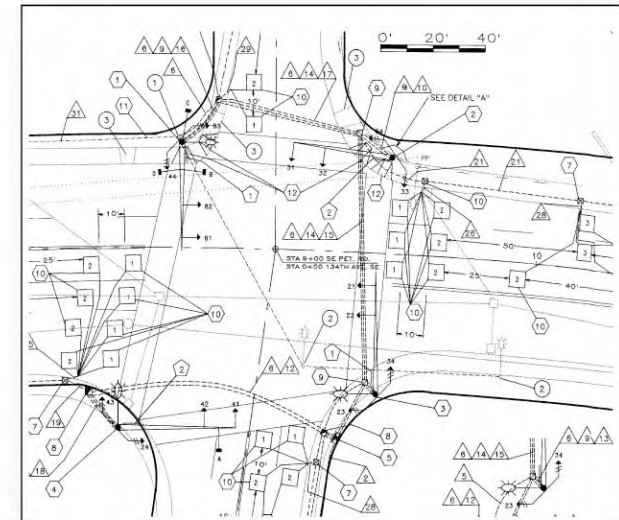
Engineer's Maps

Each map covers an entire Section (approximately one square mile), and can be ordered by Section, Township and Range. They show formal and short plats, rights-of-way, section breakdowns (bearings and distances of most rights-of-way, access easements, road vacations, road establishments, references to road papers, and other sources of road information.

The scale is 1 inch = 200 feet. The finished size is 34" x 36".

Construction Plans

These sheets show roadway plans and profiles. Some older plans have profiles on separate sheets. Since there are sometimes several different plan sets for each road, and some roads are divided into several sections and phases, and the number of sheets varies, it is advisable to come to the Map & Records Center and inspect any plans you are interested in prior to purchasing. The finished size is usually 24" x 36".



Road Construction Plan

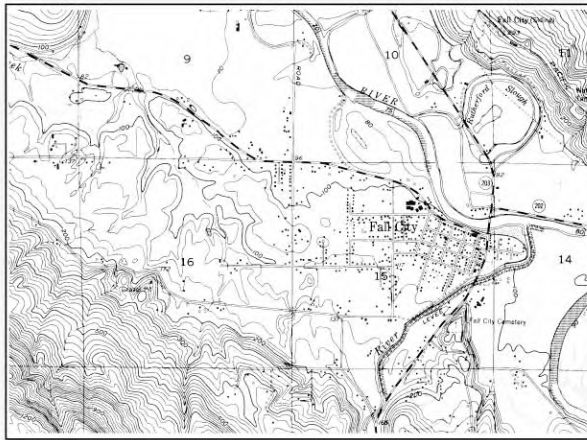
Planimetric Maps

There are six maps in this series. Four maps cover the west half of the county (42" x 36"). One map covers Vashon Island, and one map covers both the Enumclaw area and the Skykomish area (36" x 60"). These maps show roads, water, boundaries of incorporated areas and the County Boundary. Not all roads are named or numbered.

The scale on the maps is 1 inch = 2,000 feet.

Topography Maps

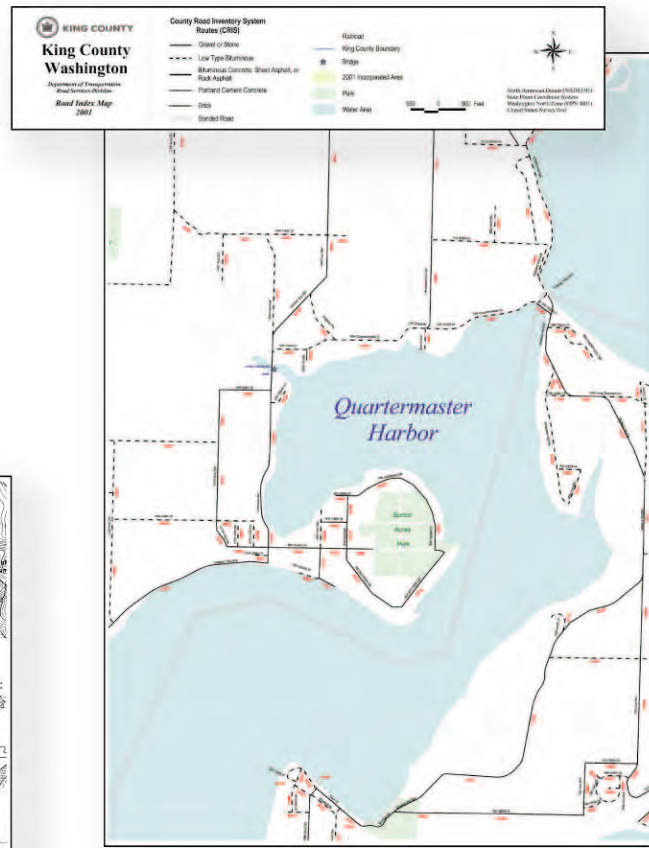
There are several different series of maps covering many areas of the County at different scales. Most of these maps are older, 1963 to 1973, and are not updated. However, contours in general do not change. It is advisable to check these maps to see if the contour interval is suitable for your purposes prior to purchasing. Their finished size is 36" x 60".



Topography Map

Road Index Maps

This map series shows all of the unincorporated King County owned and maintained roads. No private roads are shown. Generally, roads within city boundaries are not shown. All roads are named or numbered. Also, Road Log numbers are shown. Road surfacing type is indicated. These maps are updated once a year, usually in the spring. The finished size is 36" x 48". Smaller sizes are also available. For a free download of the digital Road Index Maps (PDF format) see www.metrokc.gov/gis/vmc/index.htm



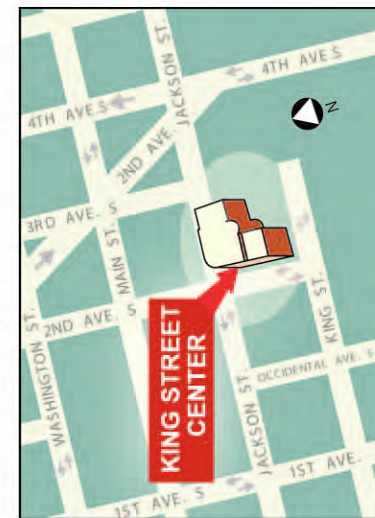
Road Index Map

WWW Internet Resources - Maps, Information and Records

- King County Map and Records Center* - www.metrokc.gov/kcdot/roads/rwmap.htm
- King County GIS Center* - www.metrokc.gov/gis
- King County Internet Mapping Application - iMap*
- www.metrokc.gov/gis/mapportal/index.htm
- King County Virtual Map Counter* - www.metrokc.gov/gis/vmc/index.htm
- King County Transportation Needs Reports*
- www.metrokc.gov/kcdot/tp/tmr/index.htm
- King County Historical Traffic Counts* - www.metrokc.gov/kcdot/roads/traffic/count/
- King County Survey Unit* - www.crab.wa.gov/king/
- King County Recorder's Office Records Search Page*
- www.metrokc.gov/recelec/records/default.htm
- King County Road Standards* - www.metrokc.gov/kcdot/roads/eng/kcrs93
- King County DDES* - www.metrokc.gov/des
- King County DDES Site Engineering, Survey and Construction*
- www.metrokc.gov/des/lusd/cad.htm
- Aerial Photographs (free)* - www.teraserver.microsoft.com
- Topographic Maps (free)* - www.topozone.com
- Federal Government Mapping and Survey Information* - www.usgs.gov
- GIS Information* - www.esri.com
- University of Washington Map Library (Suzallo basement)*
- www.lib.washington.edu/maps/

Map & Records Center

King County
Road Services Division
Department of Transportation
201 South Jackson Street - Suite # 0106
Seattle, WA 98104-3855



PLACE
STAMP
HERE



Map and Records Center

King County Department of Transportation

Road Services Division
King Street Center Building
201 South Jackson Street - Suite # 0106
Seattle, Washington 98104-3855

Phone (206) 296-6548 Hours: 8:30 a.m. to 4:30 p.m.
Fax (206) 205-5261 Monday - Friday