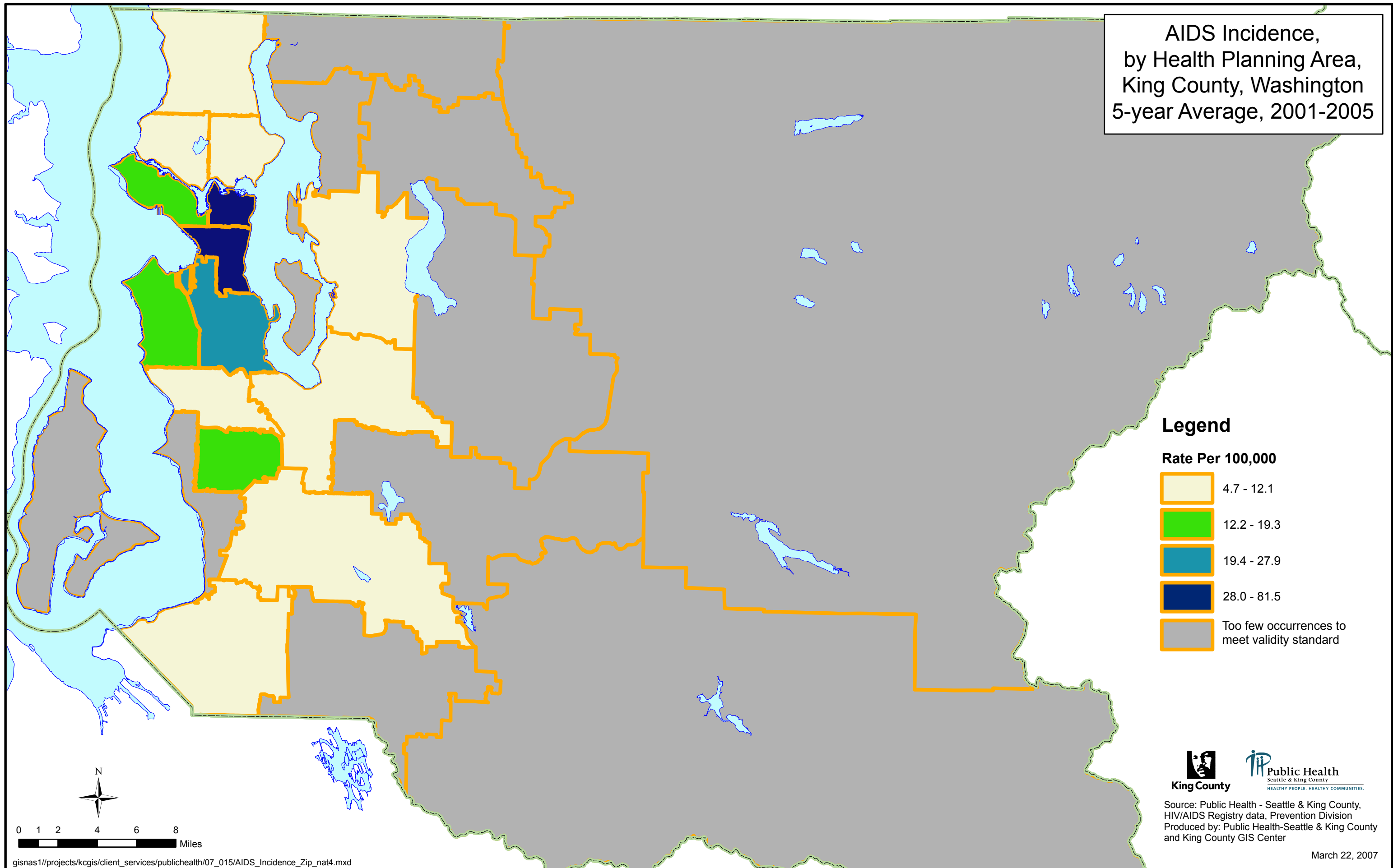







AIDS Incidence,
by Health Planning Area,
King County, Washington
5-year Average, 2001-2005



Legend

Rate Per 100,000

	4.7 - 12.1
	12.2 - 19.3
	19.4 - 27.9
	28.0 - 81.5
	Too few occurrences to meet validity standard



0 1 2 4 6 8
Miles



Source: Public Health - Seattle & King County, HIV/AIDS Registry data, Prevention Division
Produced by: Public Health-Seattle & King County and King County GIS Center

March 22, 2007