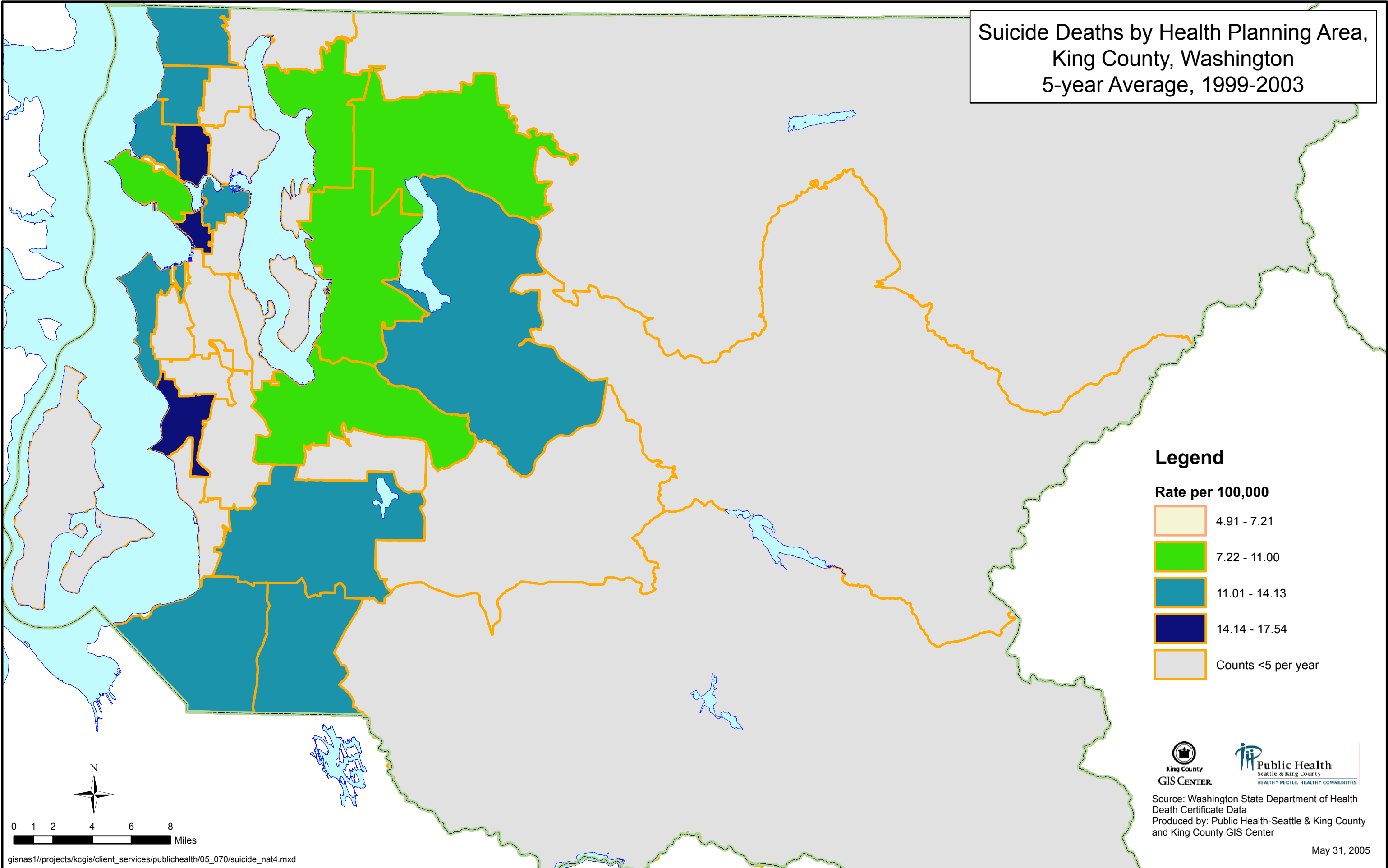


Suicide Deaths by Health Planning Area,
King County, Washington
5-year Average, 1999-2003



Legend

Rate per 100,000

- 4.91 - 7.21
- 7.22 - 11.00
- 11.01 - 14.13
- 14.14 - 17.54
- Counts <5 per year



Source: Washington State Department of Health
Death Certificate Data
Produced by: Public Health-Seattle & King County
and King County GIS Center

May 31, 2005

0 1 2 4 6 8 Miles