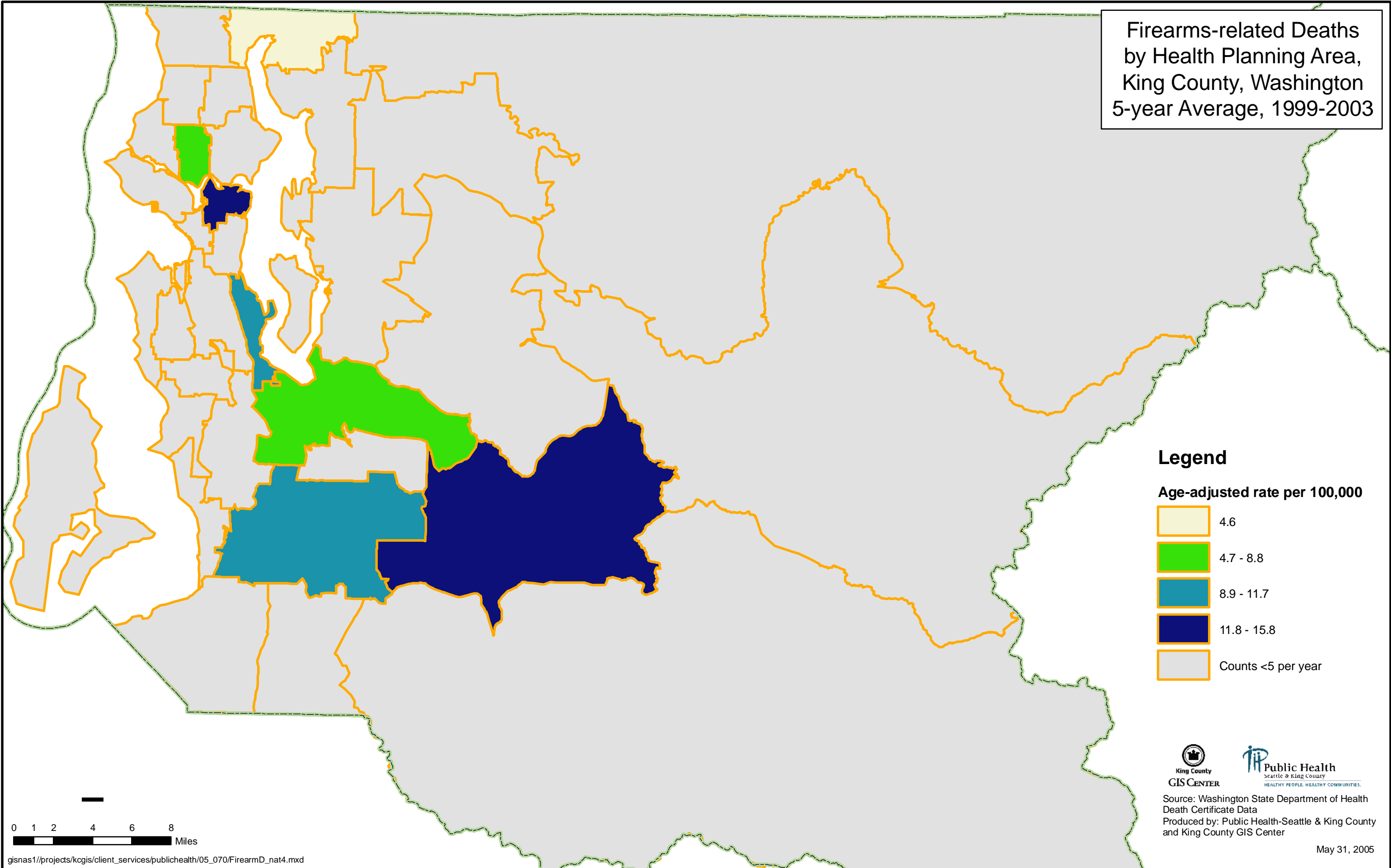


Firearms-related Deaths
by Health Planning Area,
King County, Washington
5-year Average, 1999-2003



Legend

Age-adjusted rate per 100,000

- 4.6
- 4.7 - 8.8
- 8.9 - 11.7
- 11.8 - 15.8
- Counts <5 per year

0 1 2 4 6 8
Miles

