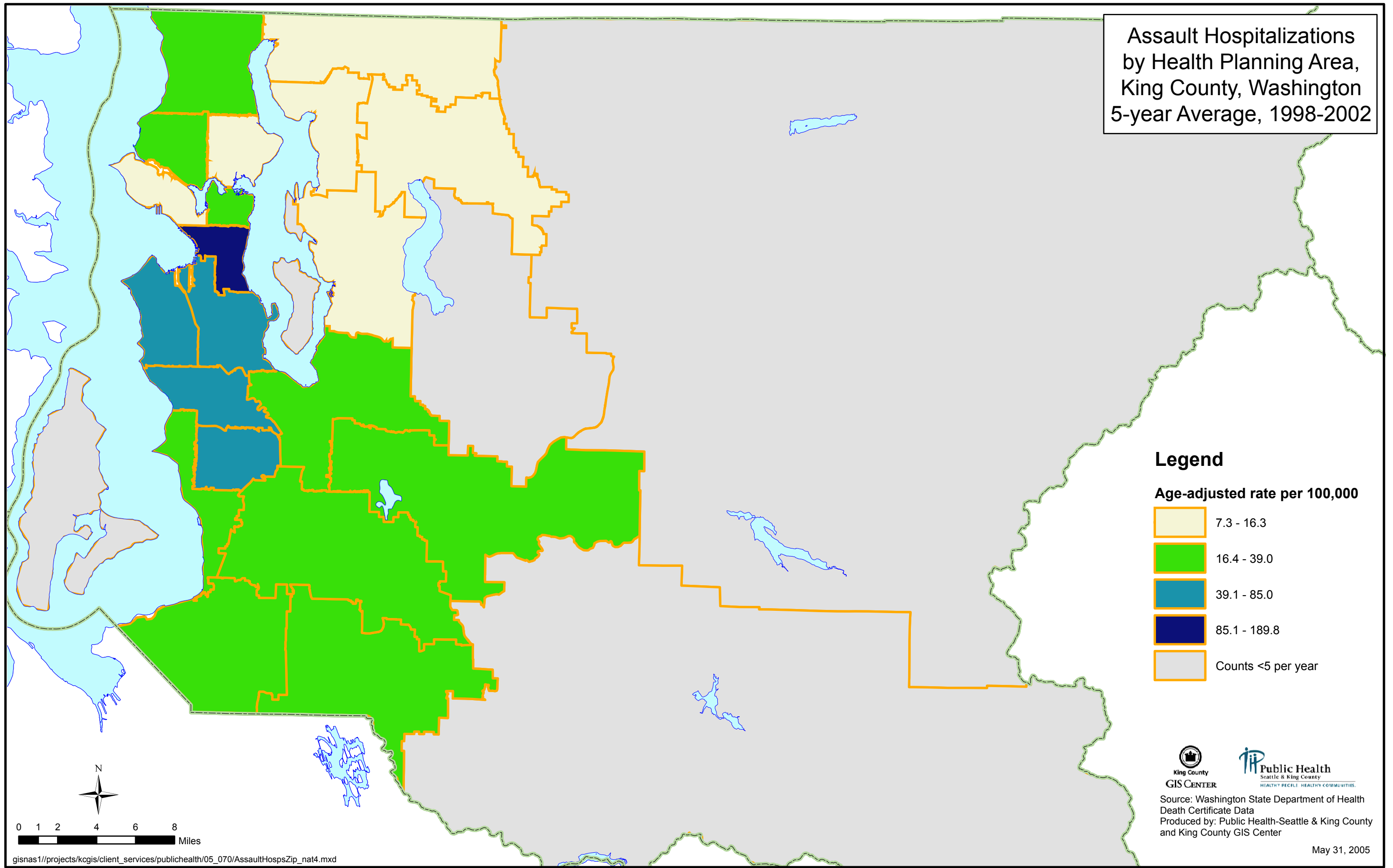


Assault Hospitalizations by Health Planning Area, King County, Washington 5-year Average, 1998-2002



Legend

Age-adjusted rate per 100,000

- 7.3 - 16.3
- 16.4 - 39.0
- 39.1 - 85.0
- 85.1 - 189.8
- Counts <5 per year



0 1 2 4 6 8
Miles