

R.2 R.3 R.4 R.5 R.6 R.7 R.8 R.9 R.10 R.11 R.12 R.13

T.26

T.25

T.24

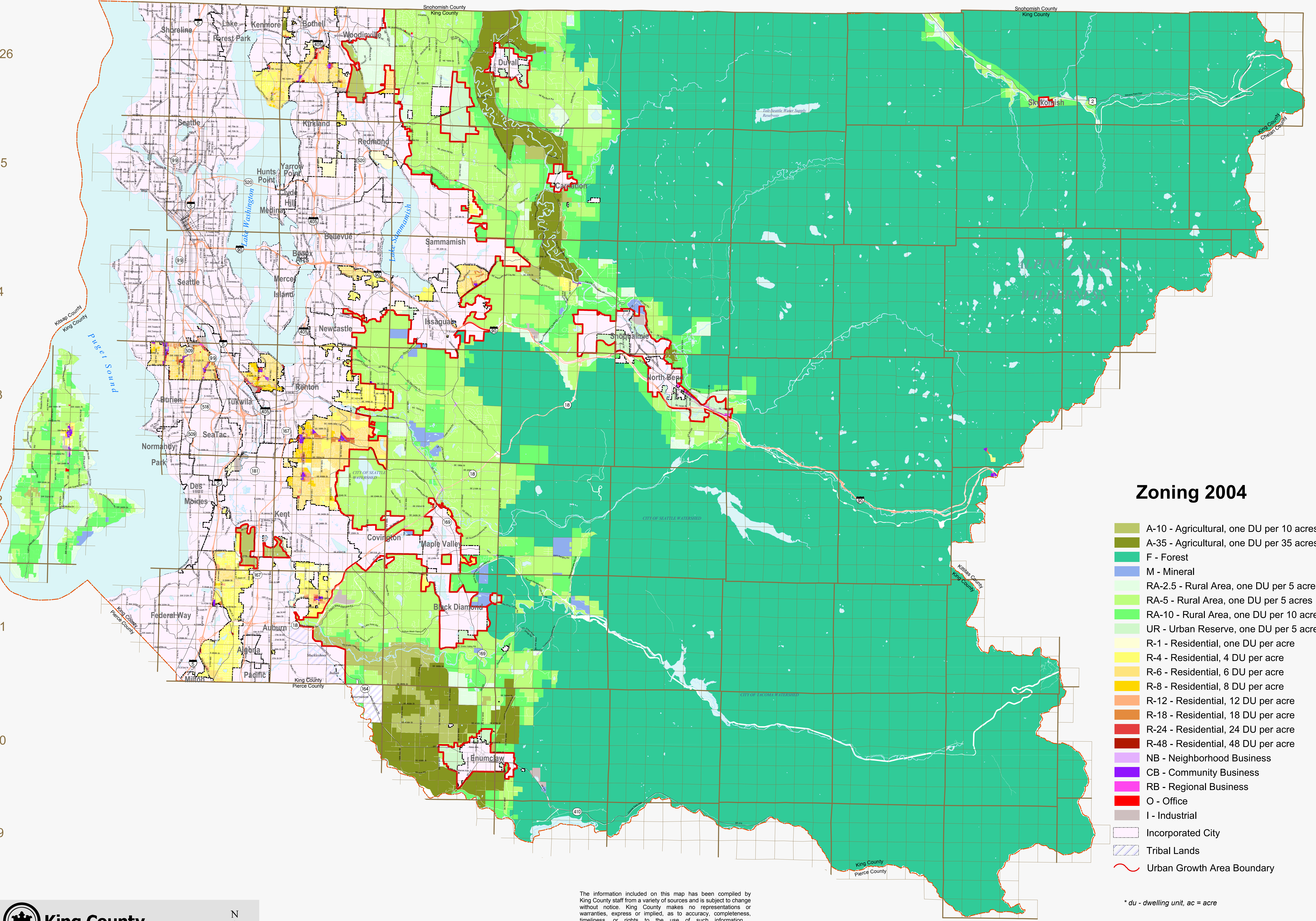
T.23

T.22

T.21

T.20

T.19



Zoning 2004

- A-10 - Agricultural, one DU per 10 acres
- A-35 - Agricultural, one DU per 35 acres
- F - Forest
- M - Mineral
- RA-2.5 - Rural Area, one DU per 5 acres
- RA-5 - Rural Area, one DU per 5 acres
- RA-10 - Rural Area, one DU per 10 acres
- UR - Urban Reserve, one DU per 5 acres
- R-1 - Residential, one DU per acre
- R-4 - Residential, 4 DU per acre
- R-6 - Residential, 6 DU per acre
- R-8 - Residential, 8 DU per acre
- R-12 - Residential, 12 DU per acre
- R-18 - Residential, 18 DU per acre
- R-24 - Residential, 24 DU per acre
- R-48 - Residential, 48 DU per acre
- NB - Neighborhood Business
- CB - Community Business
- RB - Regional Business
- O - Office
- I - Industrial
- Incorporated City
- Tribal Lands
- Urban Growth Area Boundary

* du - dwelling unit, ac = acre

King County
Department of Development and Environmental Services

0 2 4 8 Miles

m:\tony\projects\2004_zoning.mxd
COOPERT \ddes\707\gis-m\maps\200611\coopert_20061113_2004_zoning.pdf

The information included on this map has been compiled by King County staff from a variety of sources and is subject to change without notice. King County makes no representations or warranties, express or implied, as to accuracy, completeness, timeliness, or rights to the use of such information. This document is not intended for use as a survey product. King County shall not be liable for any general, special, indirect, incidental, or consequential damages including, but not limited to, lost revenues or lost profits resulting from the use or misuse of the information contained on this map. Any sale of this map or information on this map is prohibited except by written permission of King County.

Source: King County Department of Development and Environmental Services

November 2006