

R.2 R.3 R.4 R.5 R.6 R.7 R.8 R.9 R.10 R.11 R.12 R.13

T.26

T.25

T.24

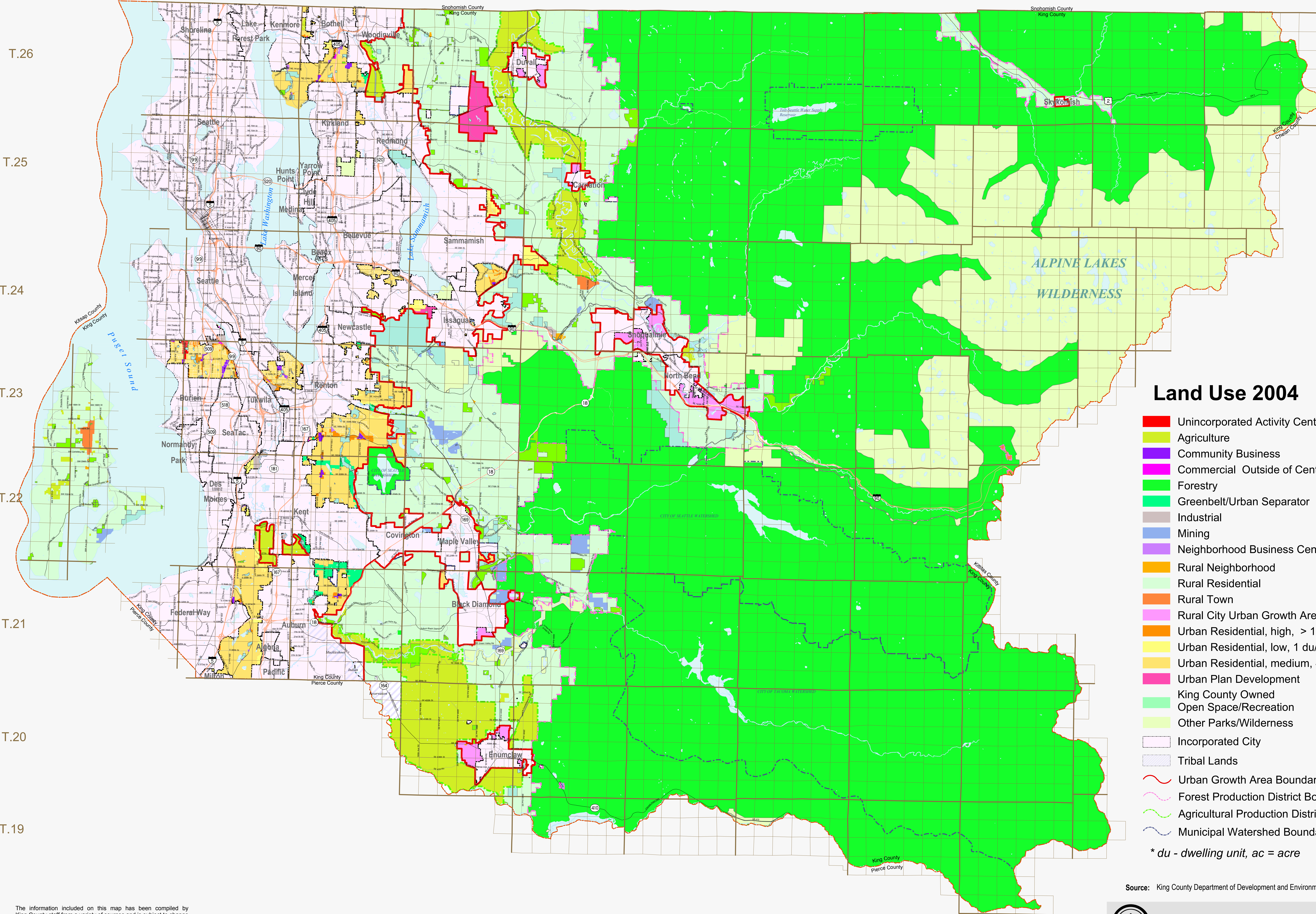
T.23

T.22

T.21

T.20

T.19



Land Use 2004

- Unincorporated Activity Center
 - Agriculture
 - Community Business
 - Commercial Outside of Centers
 - Forestry
 - Greenbelt/Urban Separator
 - Industrial
 - Mining
 - Neighborhood Business Center
 - Rural Neighborhood
 - Rural Residential
 - Rural Town
 - Rural City Urban Growth Area
 - Urban Residential, high, > 12du/ac*
 - Urban Residential, low, 1 du/ac*
 - Urban Residential, medium, 4-12 du/ac*
 - Urban Plan Development
 - King County Owned Open Space/Recreation
 - Other Parks/Wilderness
 - Incorporated City
 - Tribal Lands
 - Urban Growth Area Boundary
 - Forest Production District Boundary
 - Agricultural Production District Boundary
 - Municipal Watershed Boundary
- * du - dwelling unit, ac = acre

Source: King County Department of Development and Environmental Services

The information included on this map has been compiled by King County staff from a variety of sources and is subject to change without notice. King County makes no representations or warranties, express or implied, as to accuracy, completeness, timeliness, or rights to the use of such information. This document is not intended for use as a survey product. King County shall not be liable for any general, special, indirect, incidental, or consequential damages including, but not limited to, lost revenues or lost profits resulting from the use or misuse of the information contained on this map. Any sale of this map or information on this map is prohibited except by written permission of King County.

m:\tony\projects\2004_cplu.mxd
COOPERT \ddes707\gis-m\maps\200611\coopert_20061113_2004_cplu.pdf

King County
Department of Development and Environmental Services

0 2 4 8 Miles

North arrow pointing up.

November 2006