

Appendix A Tables

Table A-1 Correct classification rates for known source isolates, rabbits omitted.

FROM SOURCE	BIRD	CAT	COW	DOG	HORSE	HUMAN	PIGEON	TOTAL
BIRD	70 <u>43.75%</u>	30 18.75%	11 6.88%	5 3.13%	3 1.88%	21 13.13%	20 12.50%	160 100.00%
CAT	50 21.46%	99 <u>42.49%</u>	15 6.44%	11 4.72%	4 1.72%	50 21.46%	4 1.72%	233 100.00%
COW	13 3.95%	23 6.99%	124 <u>37.69%</u>	6 1.82%	49 14.89%	39 11.85%	75 22.80%	329 100.00%
DOG	28 9.82%	36 12.63%	12 4.21%	74 <u>25.96%</u>	52 18.25%	55 19.30%	28 9.82%	285 100.00%
HORSE	13 4.63%	14 4.98%	50 17.79%	64 2.14%	122 <u>43.42%</u>	35 12.46%	41 14.59%	281 100.00%
HUMAN	82 17.90%	84 18.34%	5 1.09%	21 4.59%	33 7.21%	187 <u>40.83%</u>	46 10.04%	458 100.00%
PIGEON	23 6.67%	13 3.77%	20 5.80%	2 0.58%	24 6.96%	10 2.90%	253 <u>73.33%</u>	345 100.00%
TOTAL	279 13.34%	299 14.30%	237 11.33%	125 5.98%	287 13.73%	397 18.99%	467 22.33%	2091 100.00%

ARCC = 929/2095 = 44.3%

Table A-2 Correct classification rates for known source isolates, rabbits omitted, birds and pigeons combined into BIRD category.

SOURCE	BIRD	CAT	COW	DOG	HORSE	HUMAN	TOTAL
BIRD	285 <u>56.44%</u>	71 14.06%	41 8.12%	7 1.39%	38 7.52%	63 12.48%	505 100.00%
CAT	40 1.72%	125 <u>53.65%</u>	16 6.87%	11 4.72%	52 2.15%	72 30.90%	233 100.00%
COW	54 16.41%	23 6.99%	142 <u>43.16%</u>	6 1.82%	59 17.93%	45 13.68%	329 100.00%
DOG	27 9.47%	43 15.09%	16 5.61%	74 <u>25.96%</u>	54 18.95%	71 24.91%	285 100.00%
HORSE	43 15.30%	18 6.41%	52 18.51%	5 1.78%	124 <u>44.13%</u>	39 13.88%	281 100.00%
HUMAN	48 10.48%	93 20.31%	8 1.75%	20 4.37%	37 8.08%	252 <u>55.02%</u>	458 100.00%
TOTAL	461 22.05%	373 17.84%	275 13.15%	123 5.88%	317 15.16%	542 25.92%	2091 100.00%

ARCC = 1002/2091 = 47.9%

Table A-3 Correct classification rates for known source isolates, rabbits omitted, birds and pigeons combined into BIRD category, horse and cattle combined into LIVESTOCK category.

SOURCE	BIRD	CAT	DOG	HUMAN	LIVESTOCK	TOTAL
BIRD	285 <u>56.44%</u>	71 14.06%	7 1.39%	63 12.48%	38 7.52%	505 100.00%
CAT	40 1.72%	125 <u>53.65%</u>	11 4.72%	72 30.90%	52 2.15%	233 100.00%
DOG	27 9.47%	43 15.09%	74 <u>25.96%</u>	71 24.91%	54 18.95%	285 100.00%
HUMAN	48 10.48%	93 20.31%	20 4.37%	252 <u>55.02%</u>	37 8.08%	458 100.00%
LIVESTOCK	43 15.30%	18 6.41%	5 1.78%	39 13.88%	124 <u>44.13%</u>	281 100.00%
TOTAL	461 22.05%	373 17.84%	123 5.88%	542 25.92%	317 15.16%	2091 100.00%

ARCC = 1101/2091 = 52.3%

Table A-4 Correct classification rates for known source isolates, rabbits omitted, birds and pigeons combined into BIRD category, horse and cattle combined into LIVESTOCK category, dogs and cats combined into PET category.

SOURCE	BIRD	HUMAN	LIVESTOCK	PET	TOTAL
BIRD	330 <u>65.35%</u>	37 7.338%	61 12.08%	77 15.25%	505 100.00%
HUMAN	54 11.79%	179 <u>39.08%</u>	40 8.73%	185 40.39%	458 100.00%
LIVESTOCK	135 22.13%	25 4.10%	345 <u>56.56%</u>	105 17.21%	610 100.00%
PET	46 8.88%	61 11.78%	88 16.99%	323 <u>62.36%</u>	518 100.00%
TOTAL	565 27.02%	302 14.44%	534 25.54%	690 33.00%	2091 100.00%

ARCC =1177/20911 = 56.3%

Table A-5 Hold-out analysis of library.

SOURCE	BIRD	CAT	COW	DOG	HORSE	HUMAN	PIGEON	TOTAL
BIRD	65 43.45%	23 16.08%	7 4.90%	4 2.80%	2 1.40%	21 14.69%	21 14.69%	143 100.00%
CAT	47 22.60%	64 30.77%	15 7.21%	12 5.77%	4 1.92%	62 29.81%	4 1.92%	208 100.00%
COW	13 4.30%	10 3.31%	108 35.76%	5 1.66%	52 17.22%	44 14.57%	70 23.18%	302 100.00%
DOG	23 9.20%	18 7.203%	13 5.20%	64 25.60%	50 20.00%	58 23.20%	24 9.60%	250 100.00%
HORSE	12 4.76%	5 1.98%	63 25.00%	2 0.79%	93 36.90%	39 15.48%	38 15.08%	252 100.00%
HUMAN	75 18.16%	4 10.41%	8 1.94%	15 3.63%	32 7.75%	201 48.67%	39 9.44%	413 100.00%
PIGEON	21 6.69%	2 0.64%	19 6.05%	1 0.32%	21 6.69%	15 4.78%	235 74.84%	314 100.00%
TOTAL	256 13.60%	165 8.77%	233 12.38%	103 5.47%	254 13.50%	440 23.38%	431 22.90%	1882 100.00%

ARCC = 830/1882 = 44.1%

Note: 209 isolates representing all sources randomly removed for this analysis.

Table A-6 Classification of hold-out isolates.

SOURCE	BIRD	CAT	COW	DOG	HORSE	HUMAN	PIGEON	TOTAL
BIRD	6 35.29%	3 17.65%	1 5.88%	0 0.00%	1 5.88%	4 23.53%	2 11.76%	17 100.00%
CAT	3 12.00%	8 32.00%	2 8.00%	0 0.00%	0 0.00%	12 48.00%	0 0.00%	25 100.00%
COW	0 0.00%	3 11.11%	9 33.33%	0 0.00%	4 14.81%	2 7.41%	9 33.33%	27 100.00%
DOG	5 14.29%	5 14.29%	0 0.00%	8 22.86%	3 8.57%	10 28.57%	4 11.43%	35 100.00%
HORSE	2 6.90%	1 3.45%	6 20.69%	1 3.45%	12 41.38%	3 10.34%	4 13.79%	29 100.00%
HUMAN	10 22.22%	6 13.33%	1 2.22%	1 2.22%	3 6.67%	21 46.67%	3 6.67%	45 100.00%
PIGEON	2 6.45%	0 0.00%	1 3.23%	0 0.00%	3 9.68%	2 6.45%	23 74.19%	31 100.00%
TOTAL	28 13.40%	26 12.44%	20 9.57%	10 4.78%	26 12.44%	54 25.84%	45 21.53%	209 100.00%

ARCC = 87/209 = 41.6%

Table A-7 Sampling Site Legend

North Domingo	North Domingo Baca Dam Pool Area
North Diversion-Edith	North Diversion Channel at Edith ¹
North Diversion-Paseo	North Diversion Channel at Paseo Del Norte ¹
Upper Pino	Pino Dam Area
Lower Pino	Pino Arroyo at Washington Street
Upper Bear	Bear Canyon Dam at Juan Tabo Pool area
Lower Bear	Bear Canyon at San Mateo (I-25)
Upper Embudo	Embudo Arroyo at Monte Largo Gauge
Lower Embudo	Embudo Arroyo at Snow Heights
Upper Tijeras	Tijeras Canyon at Four Hills Bridge
Lower Tijeras	Tijeras Canyon at Broadway
Upper South Diversion	South Diversion Channel at Motel 6 on Avenida de Cesar Chavez
Lower South Diversion	South Diversion Channel at Tijeras Arroyo
Barelas	Barelas Pump Station
San Jose	San Jose Drain at Woodward Crossing
Calabacillas	Calabacillas Arroyo below Coors Blvd.
San Antonio	San Antonio Arroyo at USGS Gauge

¹The two North Diversion sites are situated very close to one another in the same channel.

Table A-8 Fecal coliform count¹ for stormwater samples.

SITE	7/27/01	8/02/01	8/03/01	8/09/01	8/15/01	8/31/01	11/16/01
North Domingo		NA			7.7×10^2		
North Diversion-Edith							9.2×10^3
North Diversion-Paseo							1.7×10^4
Upper Pino					2.3×10^3	1.48×10^4	
Lower Pino		NA		2.5×10^3			
Upper Bear	8.3×10^4						
Lower Bear	9.3×10^4	5.3×10^2		1.3×10^3			
Upper Embudo	1.7×10^4			1.25×10^3			
Lower Embudo	4.27×10^4	2×10^2					
Upper Tijeras	1.73×10^4		1.3×10^3				
Upper South Diversion		1.57×10^3		6.25×10^4			
Lower South Diversion					1.63×10^4		
Barelas	1.23×10^4						
San Jose		7.9×10^3	1.31×10^5				
Calabacillas			1.69×10^4		3.63×10^4		
San Antonio					1.73×10^4		

NA = Not Available. Colonies on filters were uncountable because they were either too numerous to count or smeared.

¹ = Fecal Coliform Count expressed in Colony Forming Units (CFU) per 100 milliliters (CFU/100 mL).

Table A-9 Results of stormwater Antibiotic Resistance Analysis (ARA), rabbits omitted.

SOURCE	BIRD	CAT	COW	DOG	HORSE	HUMAN	PIGEON	TOTAL
North Domingo	2 4.00%	2 4.00%	4 8.00%	19 38.00%	4 8.00%	2 4.00%	17 34.00%	50 100.00%
North Diversion-Edith	0 0.00%	2 2.38%	46 54.76%	5 5.95%	4 4.76%	21 25.00%	6 7.14%	84 100.00%
North Diversion-Paseo	4 4.76%	7 8.33%	10 11.90%	4 4.76%	22 26.19%	25 29.76%	12 14.29%	84 100.00%
Upper Pino	24 23.76%	3 2.97%	3 2.97%	26 25.74%	18 17.82%	8 7.92%	19 18.81%	101 100.00%
Lower Pino	2 4.26%	0 0.00%	0 0.00%	1 2.13%	0 0.00%	7 14.89%	37 78.72%	47 100.00%
Upper Bear	34 75.56%	0 0.00%	4 8.89%	1 2.22%	0 0.00%	4 8.89%	2 4.44%	45 100.00%
Lower Bear	16 17.58%	3 3.30%	0 0.00%	20 21.98%	3 3.30%	41 45.05%	8 8.79%	91 100.00%
Upper Embudo	9 45.00%	0 0.00%	1 5.00%	1 5.00%	1 5.00%	4 20.00%	4 20.00%	20 100.00%
Lower Embudo	1 3.03%	7 21.21%	6 18.18%	2 6.06%	0 0.00%	9 27.27%	8 24.24%	33 100.00%
Upper Tijeras	11 47.83%	1 4.35%	1 4.35%	0 0.00%	0 0.00%	7 30.43%	3 13.04%	23 100.00%
Upper South Diversion	27 39.71%	6 8.82%	0 0.00%	3 4.41%	2 2.94%	6 8.82%	24 35.29%	68 100.00%
Lower South Diversion	1 3.57%	1 3.57%	1 3.57%	19 67.86%	2 7.14%	1 3.57%	3 10.71%	28 100.00%
Barelas	5 16.67%	1 3.33%	0 0.00%	10 33.33%	0 0.00%	11 36.67%	3 10.00%	30 100.00%
San Jose	29 25.44%	10 8.77%	8 7.02%	24 21.05%	4 3.51%	21 18.42%	18 15.79%	114 100.00%
Calabacillas	8 5.59%	40 27.97%	11 7.69%	45 31.47%	9 6.29%	25 17.48%	5 3.50%	143 100.00%
San Antonio	6 9.09%	0 0.00%	5 7.58%	34 51.52%	6 9.09%	6 9.09%	9 13.64%	66 100.00%
TOTAL	179 17.43%	83 8.08%	100 9.74%	24 20.84%	75 7.30%	198 19.28%	178 17.33%	1027 100.00%

Notes: The complete library, minus rabbits, consists of 2091 isolates and is the calibration data set. Sample analyses composited for each site. Percentages of dominant sources at each site are bolded.

Table A-10 Results of stormwater Antibiotic Resistance Analysis (ARA), rabbits omitted, birds and pigeons combined into BIRD category, horse and cattle combined into LIVESTOCK category.

SOURCE	BIRD	CAT	DOG	HUMAN	LIVESTOCK	TOTAL
North Domingo	17 34.00%	2 4.00%	21 42.00%	2 4.00%	8 16.00%	50 100.00%
North Diversion-Edith	9 10.71%	2 2.38%	5 5.95%	21 25.00%	47 55.95%	84 100.00%
North Diversion-Paseo	17 20.24%	8 9.52%	4 4.76%	26 30.95%	29 34.52%	84 100.00%
Upper Pino	30 29.70%	4 3.96%	38 37.62%	9 8.91%	20 19.80%	101 100.00%
Lower Pino	38 80.85%	0 0.00%	1 2.13%	8 17.02%	0 0.00%	47 100.00%
Upper Bear	18 40.00%	0 0.00%	4 8.89%	21 46.67%	2 4.44%	45 100.00%
Lower Bear	14 15.38%	3 3.30%	21 23.08%	50 54.95%	3 3.30%	91 100.00%
Upper Embudo	10 50.00%	2 10.00%	1 5.00%	5 25.00%	2 10.00%	20 100.00%
Lower Embudo	13 39.39%	7 21.21%	2 6.06%	9 27.27%	2 6.06%	33 100.00%
Upper Tijeras	5 21.74%	4 17.39%	0 0.00%	14 60.87%	0 0.00%	23 100.00%
Upper South Diversion	40 58.82%	6 8.82%	5 7.35%	15 22.06%	2 2.94%	68 100.00%
Lower South Diversion	3 10.71%	2 7.14%	19 67.86%	1 3.57%	3 10.71%	28 100.00%
Barelas	3 10.00%	1 3.33%	10 33.33%	16 53.33%	0 0.00%	30 100.00%
San Jose	24 21.05%	15 13.16%	31 27.19%	33 28.95%	11 9.65%	114 100.00%
Calabacillas	7 4.90%	41 28.67%	51 35.66%	25 17.48%	19 13.29%	143 100.00%
San Antonio	11 16.67%	1 1.52%	38 57.58%	7 10.61%	9 13.64%	66 100.00%
TOTAL	259 25.22%	98 9.54%	251 24.44%	262 25.51%	157 15.29%	1027 100.00%

Notes: The complete library, minus rabbits, consists of 2091 isolates and is the calibration data set.

Sample analyses composited for each site.

Percentages of dominant sources at each site are bolded.

Table A-11 Results of stormwater Antibiotic Resistance Analysis (ARA) (separated by date), rabbits omitted, birds and pigeons combined into BIRD category, horse and cattle combined into LIVESTOCK category.

SOURCE	BIRD	CAT	DOG	HUMAN	LIVESTOCK	TOTAL	Fecal Coliform Count ¹
North Domingo (08/15/01)	17 34.00%	2 4.00%	21 42.00%	2 4.00%	8 16.00%	50 100.00%	7.7x10 ²
North Diversion-Edith (11/16/01)	9 10.71%	2 2.38%	5 5.95%	21 25.00%	47 55.95%	84 100.00%	9.2x10 ³
North Diversion-Paseo (11/16/01)	17 20.24%	8 9.52%	4 4.76%	26 30.95%	29 34.52%	84 100.00%	1.7x10 ⁴
Upper Pino (08/15/01)	1 5.88%	2 11.76%	12 70.59%	0 0.00%	2 11.76%	17 100.00%	2.3x10 ³
Upper Pino (08/31/01)	29 34.52%	2 2.38%	26 30.95%	9 10.71%	18 21.43%	84 100.00%	1.48x10 ⁴
Lower Pino (08/02/01)	6 85.71%	0 0.00%	0 0.00%	1 14.29%	0 0.00%	7 100.00%	2.5x10 ³
Lower Pino (08/09/01)	32 80.00%	0 0.00%	1 2.50%	7 17.50%	0 0.00%	40 100.00%	NA
Upper Bear (07/27/01)	18 40.00%	0 0.00%	4 8.89%	21 46.67%	2 4.44%	45 100.00%	8.3x10 ⁴
Lower Bear (07/27/01)	0 0.00%	3 5.17%	18 31.03%	35 60.34%	2 3.45%	58 100.00%	9.3x10 ⁴
Lower Bear (08/02/01)	14 42.42%	0 0.00%	3 9.09%	15 45.45%	1 3.03%	33 100.00%	5.3x10 ²
Upper Embudo (07/27/01)	8 66.67%	2 16.67%	1 8.33%	1 8.33%	0 0.00%	12 100.00%	1.7x10 ⁴
Upper Embudo (08/09/01)	2 25.00%	0 0.00%	0 0.00%	4 50.00%	2 25.00%	8 100.00%	1.25x10 ³
Lower Embudo (07/27/01)	11 37.93%	5 17.24%	2 6.90%	9 31.03%	2 6.90%	29 100.00%	4.27x10 ⁴

Table A-11 Results of stormwater Antibiotic Resistance Analysis (ARA) (separated by date), rabbits omitted, birds and pigeons combined into BIRD category, horse and cattle combined into LIVESTOCK category.

SOURCE	BIRD	CAT	DOG	HUMAN	LIVESTOCK	TOTAL	Fecal Coliform Count ¹
Lower Embudo (08/02/01)	2 50.00%	2 50.00%	0 0.00%	0 0.00%	0 0.00%	4 100.00%	2x10 ²
Upper Tijeras (07/27/01)	5 21.74%	4 17.39%	0 0.00%	14 60.87%	0 0.00%	23 100.00%	1.73x10 ⁴
Upper South Diversion (08/02/01)	9 47.37%	5 26.32%	0 0.00%	3 15.79%	2 10.53%	19 100.00%	1.57x10 ³
Upper South Diversion (08/09/01)	31 63.27%	1 2.04%	5 10.20%	12 24.49%	0 0.00%	49 100.00%	6.25x10 ⁴
Lower South Diversion (08/15/01)	3 10.71%	2 7.14%	19 67.86%	1 3.57%	3 10.71%	28 100.00%	1.63x10 ⁴
Barelas (07/27/01)	3 10.00%	1 3.33%	10 33.33%	16 53.33%	0 0.00%	30 100.00%	1.23x10 ⁴
San Jose (08/02/01)	13 33.33%	5 12.82%	2 5.13%	15 38.46%	4 10.26%	39 100.00%	7.9x10 ³
San Jose (08/03/01)	11 14.67%	10 13.33%	29 38.67%	18 24.00%	7 9.33%	75 100.00%	1.31x10 ⁵
Calabacillas (08/03/01)	1 1.15%	26 29.89%	40 45.98%	19 21.84%	1 1.15%	87 100.00%	1.69x10 ⁴
Calabacillas (08/15/01)	6 10.71%	15 26.79%	11 19.64%	6 10.71%	18 32.14%	56 100.00%	3.63x10 ⁴
San Antonio (08/15/01)	11 16.67%	1 1.52%	38 57.58%	7 10.61%	9 13.64%	66 100.00%	1.73x10 ⁴
TOTAL	259 25.22%	98 9.54%	251 24.44%	262 25.51%	157 15.29%	1027 100.00%	

NA = Not Available. Colonies on filters were uncountable because they were either too numerous to count or smeared.

¹ = Fecal Coliform Count expressed in Colony Forming Units (CFU) per 100 milliliters (CFU/100 mL).

Percentages of dominant sources at each site are bolded.

Appendix B
Summary of Samples and Isolates

Sample Isolate Summary
Page 1 of 7

<u>Date Received</u>	<u>Known Source</u>	<u>CDM Sample Name</u>	<u># of Isolates</u>
11/6/2001	Rabbit	110401-1630-RB-CK	0
	Rabbit	110401-1645-RB-CK	0
	Rabbit	110401-1755-RB-EM	0
	Rabbit	110501-0730-RB-EM	0
	Rabbit	110501-1340-RB-UI	0
	Dog	110401-1710-DG-PD	0
	Dog	110401-1730-DB-PD	5
11/13/2001	Bird	111201-1120-BD-BP	0
	Bird	111201-1140-BD-UNM	0
	Cat	111201-1235-CA-AHS	0
	Cat	111201-1240-CA-AHS	1
	Cat	111201-1245-CA-AHS	0
	Cat	111201-1250-CA-AHS	5
	Cat	111201-1300-CA-AHS	5
11/20/2001	Pigeon	111901-0935-PG-APD	5
	Pigeon	111901-1030-PG-BPS	5
	Pigeon	111901-1045-PG-BPS	2
	Cat	111901-1230-CA-GP	5
	Rabbit	111901-1315-RB-CK	0
	Rabbit	111901-1325-RB-CK	0
11/27/2001	Human	112601-0930-HM-LOED	42
	Human	112601-1030-HM-BCE	42
12/12/2001	Horse	121001-1100-HS-PS	5
	Horse	121001-1110-HS-PS	5
	Horse	121001-1120-HS-PS	5
	Horse	121001-1130-HS-PS	5
1/9/2002	Dog	010702-0900-DG-MT	2
	Dog	010702-1100-DG-CON	5
	Dog	010702-1115-DG-CON	5
	Dog	010702-1155-DG-RV	5
	Cow	010702-1415-CW-BN	5
	Cow	010702-1430-CW-BN	5
	Cow	010702-1500-CW-BN	5

Sample Isolate Summary
Page 2 of 7

<u>Date Received</u>	<u>Known Source</u>	<u>CDM Sample Name</u>	<u># of Isolates</u>
1/29/2001	Horse	012702-1400-HS-CWF	10
	Horse	012702-1405-HS-CWF	0
	Horse	012702-1410-HS-CWF	10
	Horse	012702-1415-HS-CWF	10
	Horse	012702-1420-HS-CWF	10
	Horse	012702-1425-HS-CWF	10
	Horse	012702-1430-HS-CWF	10
	Horse	012702-1435-HS-CWF	10
	Horse	012702-1440-HS-CWF	10
	Horse	012702-1500-HS-LSS	0
	Horse	012702-1505-HS-LSS	2
	Horse	012702-1510-HS-LSS	10
	Horse	012702-1515-HS-LSS	10
	Horse	012702-1520-HS-LSS	10
	Horse	012702-1525-HS-LSS	10
	Horse	012702-1530-HS-LSS	10
	Horse	012702-1535-HS-LSS	10
	Horse	012702-1540-HS-LSS	10
	Horse	012702-1545-HS-LSS	4
	Bird	012702-1820-BD-NP	0
	Bird	012702-1825-BD-NP	0
	Bird	012702-1830-BD-NP	0
	Bird	012702-1835-BD-NP	0
	Pigeon	012702-1550-PG-LSS	0
	Pigeon	012702-1555-PG-LSS	8
	Pigeon	012702-1600-PG-LSS	10
	Range Cow	012702-1615-CW-BRN	10
	Range Cow	012702-1620-CW-BRN	10
	Range Cow	012702-1620-CW-BRN	5
	Range Cow	012702-1625-CW-BRN	10
	Range Cow	012702-1630-CW-BRN	10
	Range Cow	012702-1635-CW-BRN	10
	Dairy Cow	012702-1700-CW-SVD	10
	Dairy Cow	012702-1705-CW-SVD	10
	Dairy Cow	012702-1710-CW-SVD	10
	Dairy Cow	012702-1715-CW-SVD	10
Dairy Cow	012702-1720-CW-SVD	10	
Dairy Cow	012702-1725-CW-SVD	10	
Dairy Cow	012702-1730-CW-SVD	10	
Dairy Cow	012702-1735-CW-SVD	7	
Dairy Cow	012702-1740-CW-SVD	10	
Dairy Cow	012702-1745-CW-SVD	10	
Dairy Cow	012702-1750-CW-SVD	10	
Dairy Cow	012702-1755-CW-SVD	10	
Dairy Cow	012702-1800-CW-SVD	10	
Dairy Cow	012702-1805-CW-SVD	10	
Dairy Cow	012702-1810-CW-SVD	10	

Date Received	Known Source	CDM Sample Name	# of Isolates
2/5/2001	Horse	020402-900-HS-TC	1
	Horse	020402-900-HS-TC	0
	Horse	020402-900-HS-TC	0
	Horse	020402-900-HS-TC	0
	Horse	020402-900-HS-TC	0
	Horse	020402-900-HS-TC	6
	Horse	020402-900-HS-TC	4
	Horse	020402-900-HS-TC	3
	Horse	020402-900-HS-TC	1
	Dog	020402-1030-DG-AHS	10
	Dog	020402-1030-DG-AHS	0
	Dog	020402-1030-DG-AHS	10
	Dog	020402-1030-DG-AHS	10
	Dog	020402-1030-DG-AHS	10
	Dog	020402-1030-DG-AHS	10
	Dog	020402-1030-DG-AHS	10
	Cat	020402-1030-CA-AHS	10
	Cat	020402-1030-CA-AHS	10
	Cat	020402-1030-CA-AHS	10
	Cat	020402-1030-CA-AHS	10
	Cat	020402-1030-CA-AHS	10
	Cat	020402-1030-CA-AHS	10
	Cat	020402-1030-CA-AHS	10
	Cat	020402-1030-CA-AHS	10
	Cat	020402-1030-CA-AHS	1
	Pigeon	020302-1000-PG-APD	10
	Pigeon	020302-1005-PG-APD	10
	Pigeon	020302-1010-PG-APD	10
	Bird	020302-0910-BD-NP	0
	Bird	020302-0912-BD-NP	10
	Bird	020302-0915-BD-NP	0
	Bird	020302-0918-BD-NP	0
	Bird	020302-0920-BD-NP	0
	Bird	020302-0922-BD-NP	0
	Bird	020302-0925-BD-NP	0
	Bird	020302-0928-BD-NP	0
	Bird	020302-0930-BD-NP	10
	Bird	020302-0933-BD-NP	10
	Bird	020302-1100-BD-RGN	10
Bird	020302-1100-BD-RGN	0	
Bird	020302-1100-BD-RGN	10	
Bird	020302-1100-BD-RGN	0	
Bird	020302-1130-BD-NP	0	
Bird	020302-1025-BD-UNM	10	
Bird	020302-1035-BD-UNM	0	
Bird	020302-1040-BD-UNM	10	
Human	020402-0915-HM-ED	96	
Human	020402-0920-HM-ED	96	
Human	020402-1000-HM-EUB	96	
Human	020402-1005-HM-EUB	96	

<u>Date Received</u>	<u>Known Source</u>	<u>CDM Sample Name</u>	<u># of Isolates</u>
2/12/2002	Dog	020902-0700-DOG-PD	10
	Dog	020902-0700-DOG-PD	0
	Dog	020902-0700-DOG-PD	2
	Dog	020902-0700-DOG-PD	10
	Dog	020902-0700-DOG-PD	0
	Dog	020902-0700-DOG-PD	10
	Dog	020902-0700-DOG-PD	10
	Dog	020902-0700-DOG-PD	10
	Dog	020902-0700-DOG-PD	10
	Dog	020902-0700-DOG-PD	10
	Dog	020902-0700-DOG-PD	10
	Dog	020902-0700-DOG-PD	10
	Dog	020902-0700-DOG-PD	10
	Dog	020902-0730-DOG-PD	10
	Dog	020902-0730-DOG-PD	10
	Dog	020902-0730-DOG-PD	10
	Dog	020902-0730-DOG-PD	10
	Dog	020902-0730-DOG-PD	10
	Dog	020902-0730-DOG-PD	0
	Dog	020902-0730-DOG-PD	10
	Dog	020902-0730-DOG-PD	10
	Dog	020902-0730-DOG-PD	10
	Dog	020902-0730-DOG-PD	0
	Dog	020902-0730-DOG-PD	10
	Dog	DOG-PD	10
	Cat	020902-0700-CAT-PD	0
	Cat	020902-0700-CAT-PD	10
	Cat	020902-0700-CAT-PD	8
	Cat	020902-0700-CAT-PD	10
	Cat	020902-0700-CAT-PD	10
	Rabbit	020902-0700-bunny-PD	0
	Pigeon	Downtown Pigeon	36
	Pigeon	UNM Pigeon	83
	Cow	Cow	10
	Cow	Cow	10
	Cow	Cow	10
Cow	Cow	10	
Cow	Cow	10	
Cow	Cow	8	
Cow	Cow	10	
Cow	Cow	10	
Cow	Cow	10	
Cow	Cow	10	
Cow	Cow	10	
Cow	Cow	10	
Cow	Cow	0	

(Continued on next page.)

<u>Date Received</u>	<u>Known Source</u>	<u>CDM Sample Name</u>	<u># of Isolates</u>
2/12/2002	(Continued from previous page.)		
	Bird	020902-1000-Bird-NP	0
	Bird	020902-1000-Bird-NP	10
	Bird	020902-1000-Bird-NP	0
	Bird	020902-1000-Bird-NP	0
	Bird	020902-1000-Bird-NP	0
	Bird	020902-1000-Bird-NP	10
	Bird	020902-1000-Bird-NP	0
	Bird	020902-1000-Bird-NP	0
	Bird	020902-1000-Bird-NP	0
	Bird	020902-1000-Bird-NP	0
	Bird	Bird-UNM	0
	Bird	UNM-Duck	10
	Bird	Duck (Bird)	10
0215/2002	Rabbit	021202-0750-RB-NDB	0
	Rabbit	021302-0800-RB-NDB	10 *
	Rabbit	021302-0810-RB-NDB	0
	Rabbit	021402-0815-RB-NDB	0
2/19/2002	Cat	Cat	0
	Cat	Cat	0
	Cat	Cat	1
	Cat	Cat	10
	Cat	Cat	10
	Cat	Cat	10
	Cat	Cat	0
	Cat	Cat	0
	Cat	Cat	10
	Cat	Cat	0
	Cat	Cat	10
	Cat	Cat	10
	Cat	Cat	1
	Cat	Cat	10
	Cat	Cat	0
	Cat	Cat	0
	Cat	Cat	10
	Cat	Cat	1
	Cat	Cat	10
	Cat	Cat	0
	Pigeon	021602-pigeon-APD	83
	Pigeon	021602-pigeon-APD	96
	Rabbit	021602-rabbit-NDB	0
	Rabbit	021602-rabbit-NDB	0
	Rabbit	021502-rabbit-PL	0

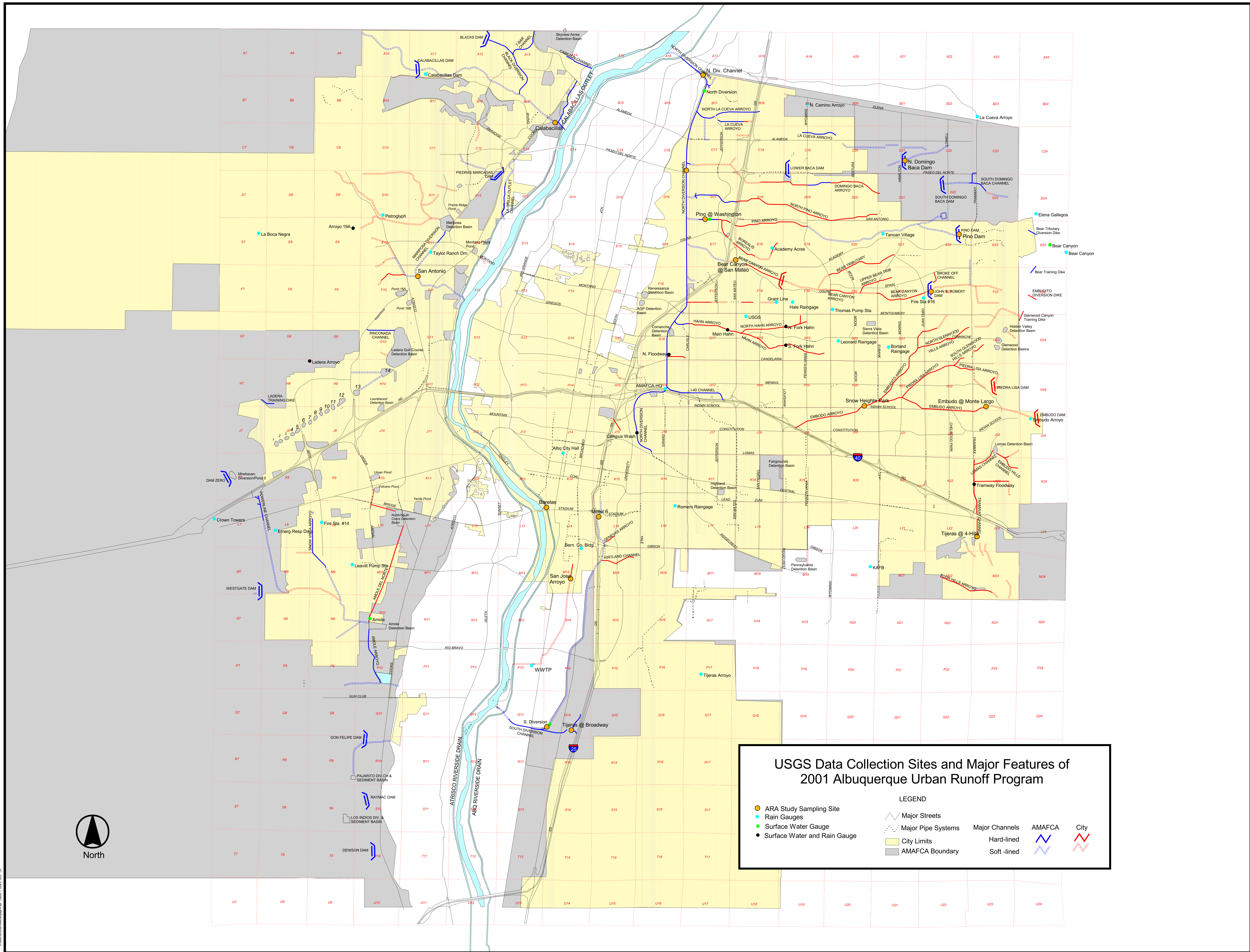
<u>Date Received</u>	<u>Known Source</u>	<u>CDM Sample Name</u>	<u># of Isolates</u>
2/19/2002	Bird	021602-bird-NP	0
	Bird	021602-bird-NP	0
	Bird	021602-bird-NP	10
	Bird	021602-bird-NP	0
	Bird	021602-bird-NP	1
	Bird	021602-bird-NP	0
	Bird	021602-bird-NP	0
	Bird	021602-bird-NP	0
	Bird	021602-bird-NP	0
	Bird	021602-bird-NP	0
	Bird	021602-bird-NP	0
	Bird	021602-bird-TB	6
	Bird	021602-bird-TB	3
	Bird	021602-bird-TB	10
	Bird	021602-bird-TB	0
	Bird	021602-bird-TB	10
	Bird	021602-bird-TB	0
2/21/2002	Rabbit	Rabbit	32 *
	Rabbit	Rabbit	0
	Rabbit	Rabbit	0
	Rabbit	Rabbit	0
	Rabbit	Rabbit	0
	Rabbit	Rabbit	0
2/27/2002	Horse	022402-1100-Horse-LSS	10
	Horse	022402-1100-Horse-LSS	10
	Horse	022402-1100-Horse-LSS	1
	Horse	022402-1100-Horse-LSS	10
	Horse	022402-1100-Horse-LSS	10
	Horse	022402-1100-Horse-LSS	9
	Horse	022402-1100-Horse-LSS	10
	Horse	022402-1100-Horse-LSS	1
	Horse	022402-1100-Horse-LSS	0
	Horse	022402-1100-Horse-LSS	10
	Horse	022402-1100-Horse-LSS	10
	Horse	022402-1100-Horse-LSS	10
	Pigeon	022402-1015-PG-APD	0
	Pigeon	UNM Pigeons 022402	0
	Pigeon	UNM Pigeons 022402	10
	Bird	UNM Duck (bird) 022402	10

(Continued on next page.)

<u>Date Received</u>	<u>Known Source</u>	<u>CDM Sample Name</u>	<u># of Isolates</u>
2/27/2002	(Continued from previous page.)		
	Rabbit	022202-0710-RB-NDB	0
	Rabbit	022402-0730-RB-NDB	0
	Rabbit	022402-0740-RB-NDB	0
	Rabbit	022502-0800-RB-NDB	0
	Rabbit	022302-0800-RB-NDB	0
	Rabbit	022102-0815-RB-NDB	10 *
	Rabbit	022102-0820-RB-NDB	0
	Rabbit	022302-0825-RB-NDB	9
	Rabbit	022502-0825-RB-NDB	0
	Rabbit	022102-0845-RB-NDB	0
3/1/2002	Rabbit	022802-0740-RB-ADO	4
	Rabbit	022702-0825-RB-ADO	0
	Rabbit	022802-0715-RB-NDB	0
	Rabbit	022502-1745-RB-NDB	0
	Rabbit	022602-0805-RB-NDB	0
	Rabbit	022702-0810-RB-NDB	0
	Rabbit	022702-0815-RB-NDB	0
	Rabbit	022702-1720-RB-NDB	0

NOTE: The number of isolates listed is the number of isolates obtained after isolation from fecal samples. Not all isolates can be revived from frozen storage, therefore, the actual number of isolates for each known source may vary from what is reported on the SAS report.
* These rabbit isolates were not included in the database of known sources. The isolates were confirmed as non-fecal coliforms.

Appendix C
Map of Study Area



USGS Data Collection Sites and Major Features of 2001 Albuquerque Urban Runoff Program

<ul style="list-style-type: none"> ● ARA Study Sampling Site ● Rain Gauges ● Surface Water Gauge ● Surface Water and Rain Gauge 	<p style="text-align: center;">LEGEND</p> <ul style="list-style-type: none"> Major Streets Major Pipe Systems Major Channels City Limits AMAFCA Boundary 	<ul style="list-style-type: none"> Hard-lined Soft-lined AMAFCA City
---	--	--



Appendix D
Site Photographs



North Domingo Baca Dam Pool (North Domingo)



North Diversion Channel at Edith (North Diversion – Edith)



North Diversion at Paseo del Norte (North Diversion – Paseo)



Pino Arroyo at Washington Street (Lower Pino)



Bear Canyon Dam at Juan Tabo (Upper Bear)



Bear Canyon at San Mateo (Lower Bear)



Embudo Arroyo at Monte Largo (Upper Embudo)



Tijeras Arroyo at Four Hills



Tijeras Canyon at Broadway (Lower Tijeras)



South Diversion Channel at Motel 6 on Avenida de Cesar Chavez (Upper South Diversion)



South Diversion Channel at the Tijeras Arroyo (Lower South Diversion)



Barelas Pump Station



San Jose Drain at Woodward (San Jose)



Calabacillas Arroyo below Coors Blvd. (Calabacillas)



San Antonio Arroyo at USGS Gauge (San Antonio)