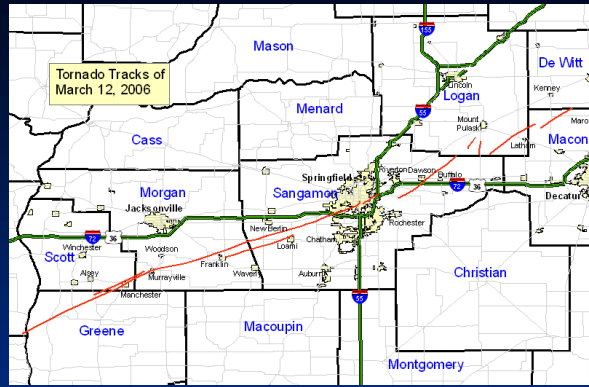
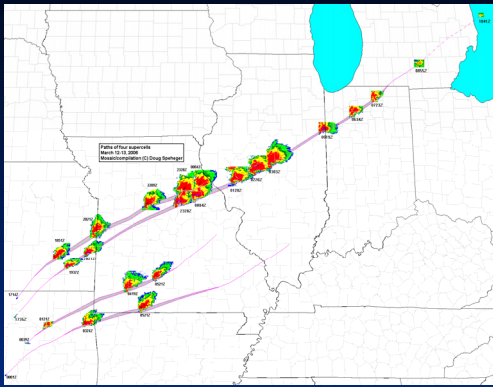
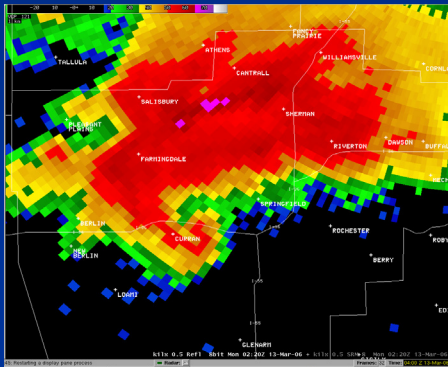


Springfield Tornadoes

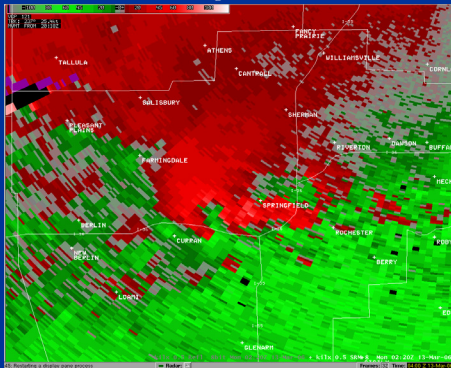
March 12, 2006



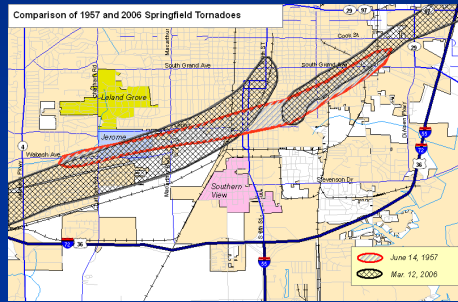
A supercell thunderstorm, which originated in Oklahoma, moved across six states on March 12, 2006. This thunderstorm produced nine tornadoes in central Illinois. Two F2 tornadoes affected the city of Springfield; one of these tornadoes had been on the ground for over 60 miles.



Radar images from 8:20 pm, as the tornado was crossing I-72 and beginning to enter the southwest part of Springfield. The classic “hook echo” is visible in the above image.



During a conference call with emergency managers at 6 pm, the storm (still in Missouri at the time) was predicted by the NWS to reach the Springfield area around 8:15 pm. The Tornado Warning for Sangamon County was issued at 7:43 pm, and the first tornado arrived in Springfield at 8:20 pm, giving residents 37 minutes notice before the storm's arrival. The second tornado had 41 minutes notice, touching down at 8:24 pm.



The combined path of these tornadoes in Springfield was remarkably close to the path of the 1957 F3 tornado, which killed two people, injured 50 others, and caused \$2.5 million in property damage.

Other Tornadoes Affecting Springfield Over the Years:

- January 1, 1876: An F2 tornado briefly touched down in Springfield, damaging several homes and a factory. Girders from an iron roof were bent in half.
- April 24, 1880: F2 tornado destroyed 2 homes southeast of Springfield, along a 4 mile path to Dawson.
- May 18, 1883: A tornado touched down 2.5 miles south of the center of Springfield, and traveled northeast 40 miles to near Kenney (De Witt County). The tornado was described as “balloon-shaped” at its ½ mile wide peak east of Springfield; the peak intensity was F4. The tornado killed 11 people and thousands of farm animals along its overall path.
- June 8, 1883: An F2 tornado touched down 3 miles south southwest of Springfield, and traveled 4 miles before lifting on the east side of town. Several homes were unroofed.
- May 31, 1899: An F2 tornado moved east-southeast through Springfield, causing several buildings near the old fairgrounds to lose their roofs.
- April 19, 1927: Springfield was the beginning and ending point of two long-track tornadoes. The first traveled 80 miles from Missouri before lifting on the southwest edge of Springfield, after causing \$65,000 damage in town. A new tornado then developed near the end of the old one, and moved 65 miles to Ford County. Both tornadoes were rated F4 at their strongest.
- May 2, 1942: The northwest side of Springfield was affected by part of a family of tornadoes which originated in southwest Sangamon County. The heaviest damage was southwest of Springfield near Franklin, and northeast of Springfield across Logan County.
- June 14, 1957: This F3 tornado moved across the south and southeast sides of Springfield, causing about \$1 million damage. Two people were killed and 50 were injured.
- May 8, 1988: An F2 tornado touched down on the northeast shores of Lake Springfield, destroying one home and 3 others under construction.
- June 20, 2000: A weak tornado touched down 2 miles east-northeast of Capital Airport, causing minor damage.
- April 2, 2006: Two more tornadoes, both F1 in intensity, affected the south and southeast sides of Springfield, bringing the yearly total in the city up to 4.



John McIntyre

NWS

NWS