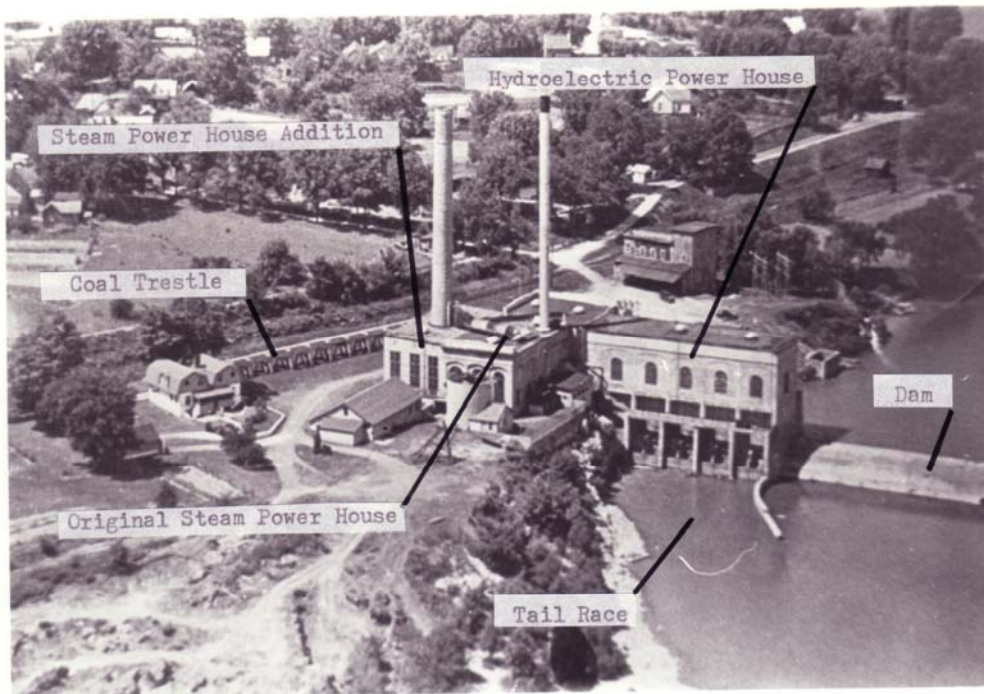




Aerial photograph of the Williams Power plant taken prior to 1940



Aerial photograph of the Williams Power plant taken prior to 1940



3

6/11/1910 -- Stone excavation in engine room. Drilling in progress.



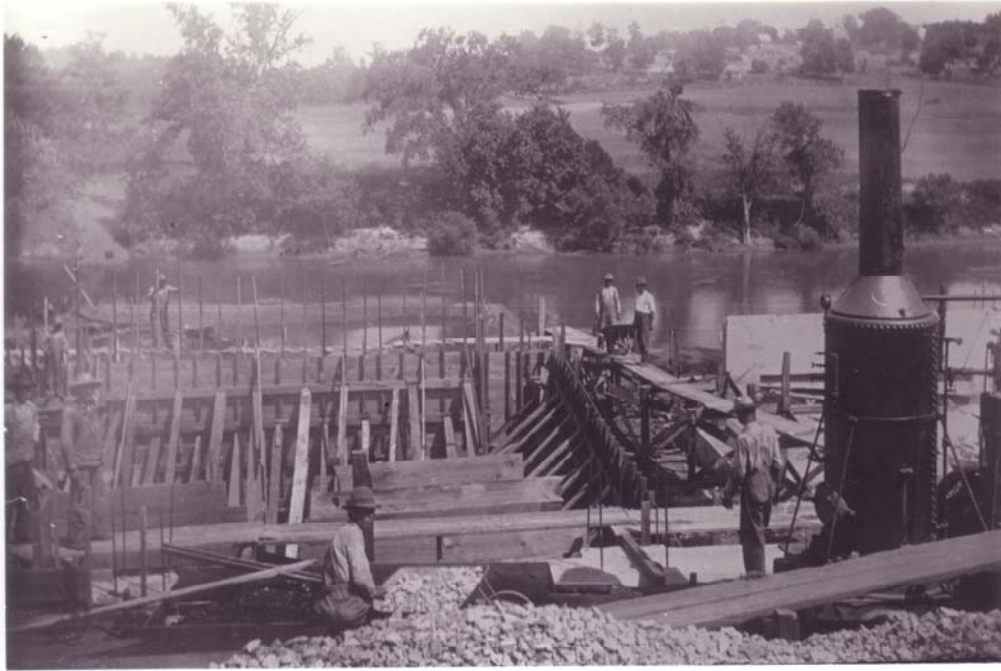
6/14/1910 – View from east bank showing method of building coffer dam from earth excavation from wheel pits.



6/14/1910 – View from top of mill just north of site.



6/21/1910 – Concreting walls in basement of engine room. View from southwest corner of boiler room.



7

6/21/1910 – Showing wall forms of engine room basement.

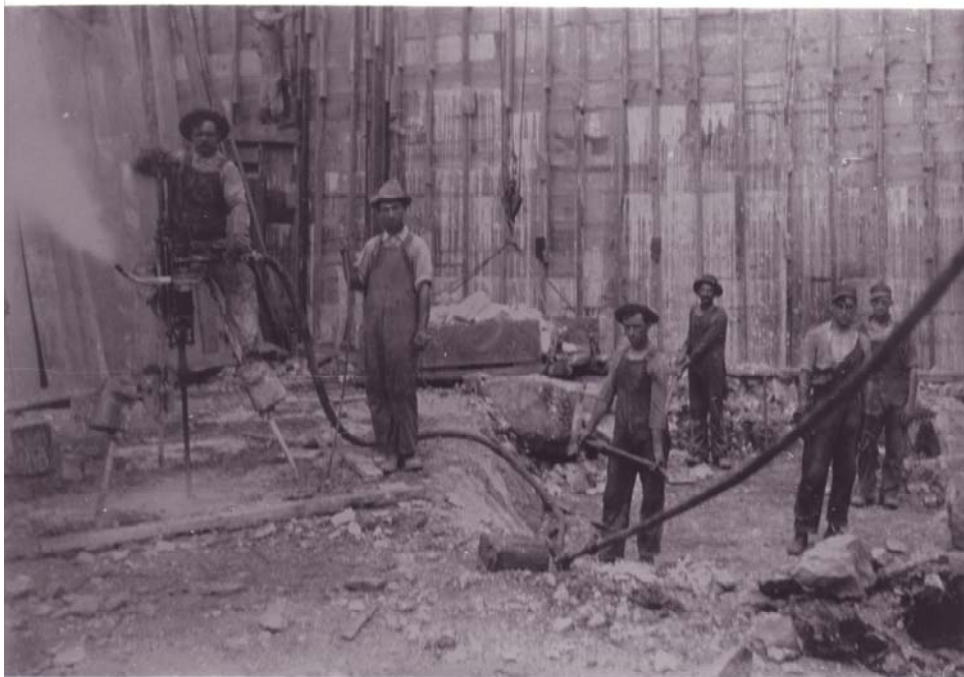


8

6/24/1910 – First excavation in coffer dam on west side of river.



6/30/1910 – View of coffer dam from south end of wheel pits. Drilling rock at elevation 458.
Coffer dam practically done.



7/1/1910 – Excavation begun below elevation 488 after walls poured in engine room. Began drilling 7/1/1910.



7/2/1910 – View from stone pile north end of power house.



6/3/1910 – View of coffer dam from wheel pits.



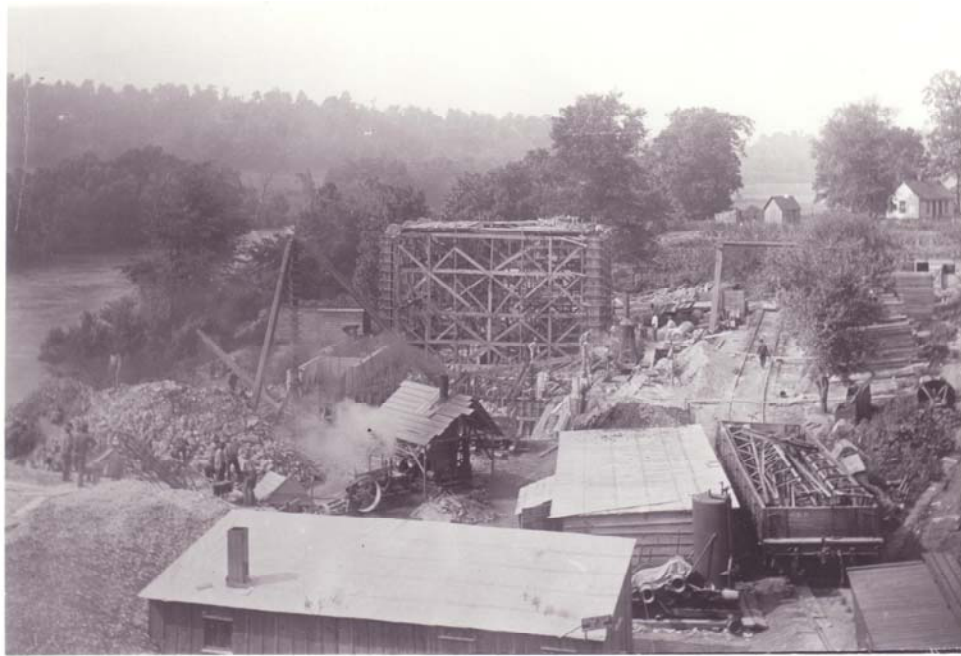
13

1910 – Williams Historic dam, construction photograph.

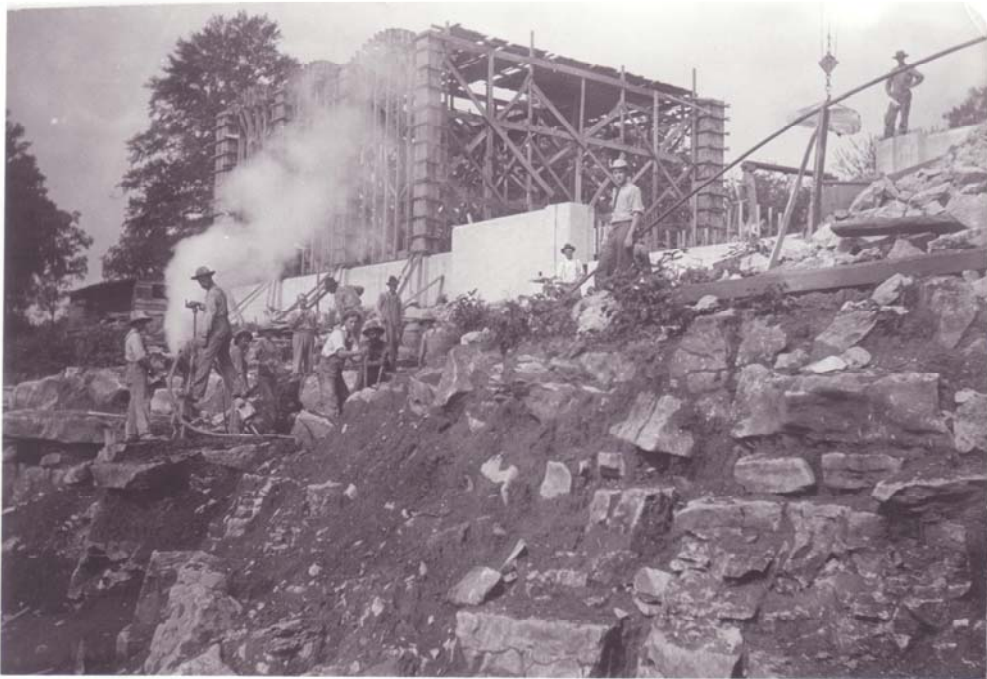


14

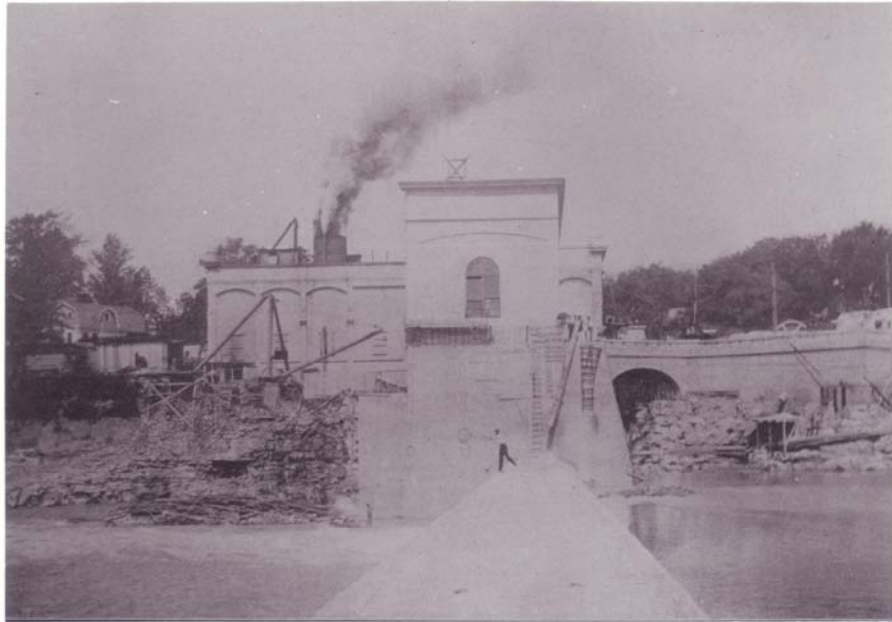
1910 – Williams Historic dam, construction photograph.



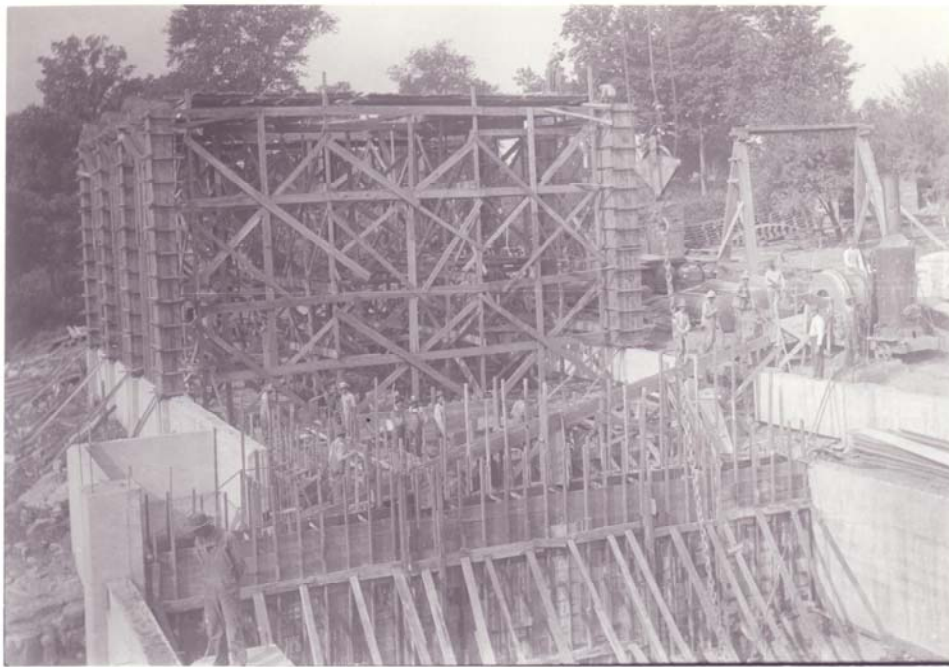
1910 – Williams Historic dam, construction photograph.



1910 – Williams Historic dam, construction photograph.



1910 – Williams Historic dam, construction photograph.



1910 – Williams Historic dam, construction photograph.



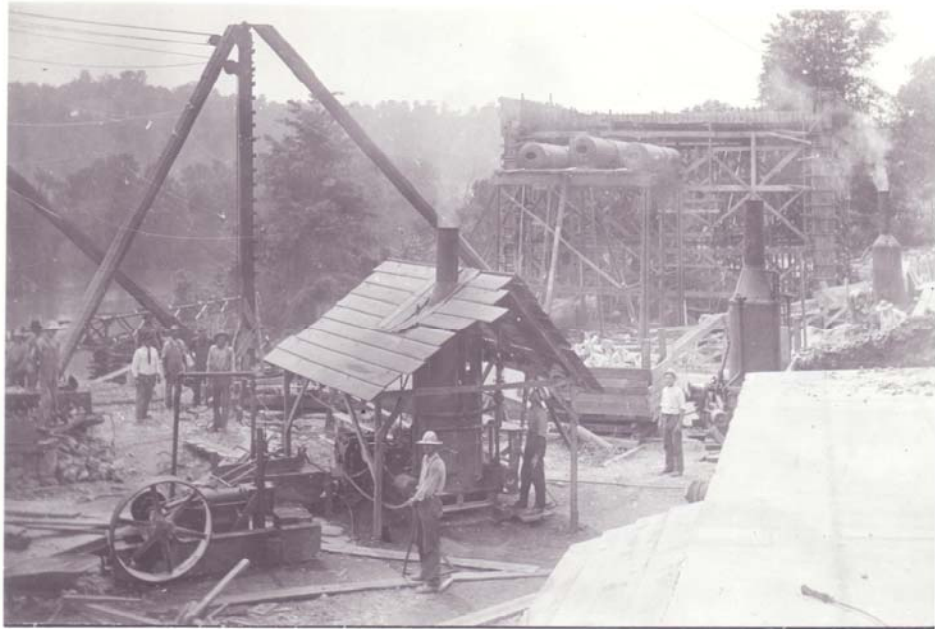
18

1910 – Williams Historic dam, construction photograph.



18

1910 – Williams Historic dam, construction photograph.



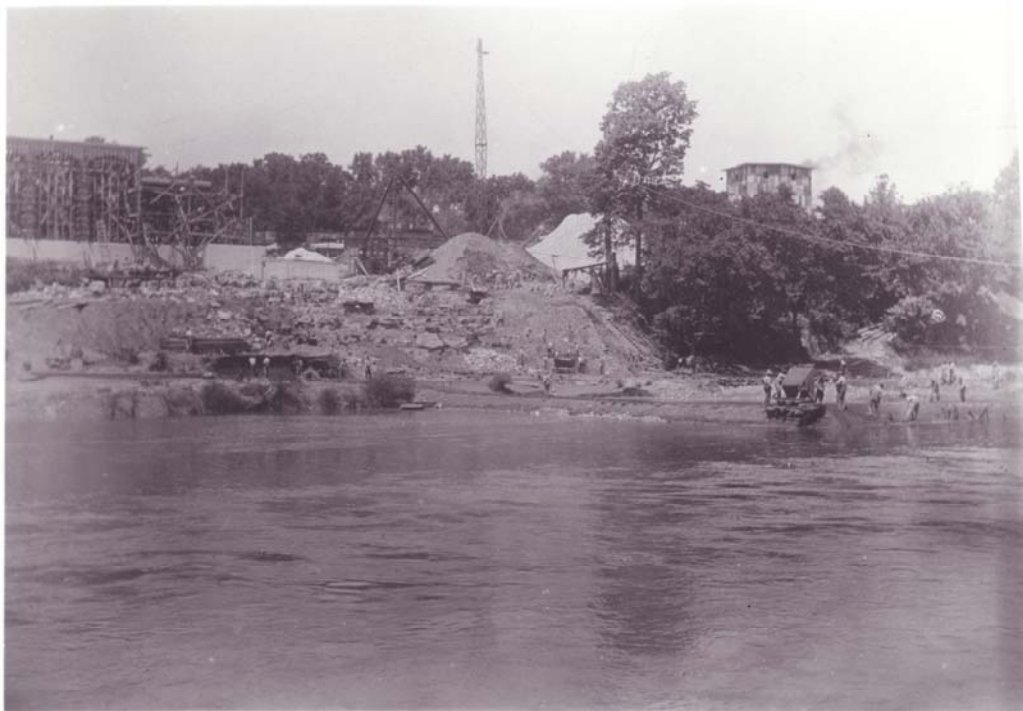
1910 – Williams Historic dam, construction photograph.



1910 – Williams Historic dam, construction photograph.



1910 – Williams Historic dam, construction photograph.



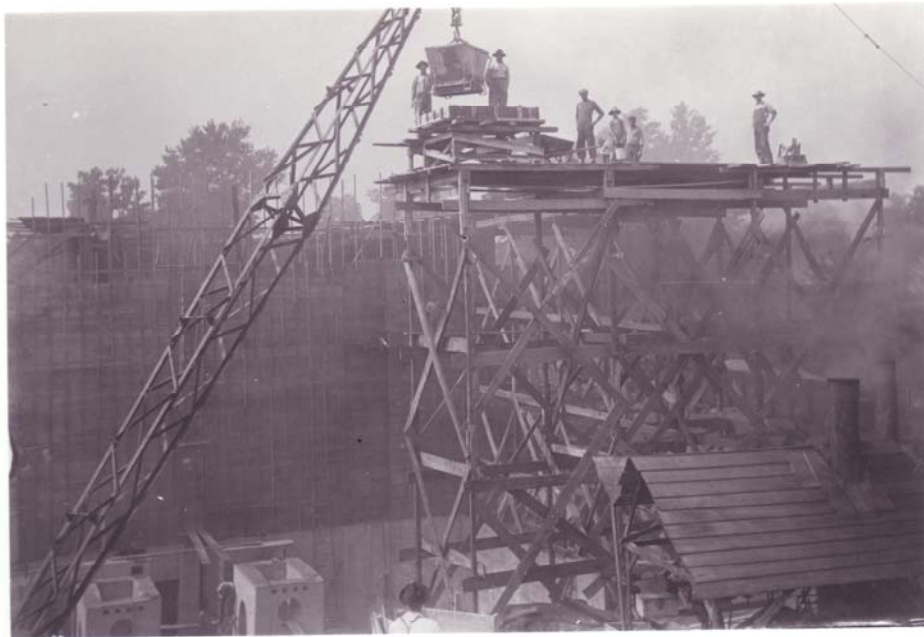
1910 – Williams Historic dam, construction photograph.



1910 – Williams Historic dam, construction photograph.



1910 – Williams Historic dam, construction photograph.



25

1910 – Williams Historic dam, construction photograph.

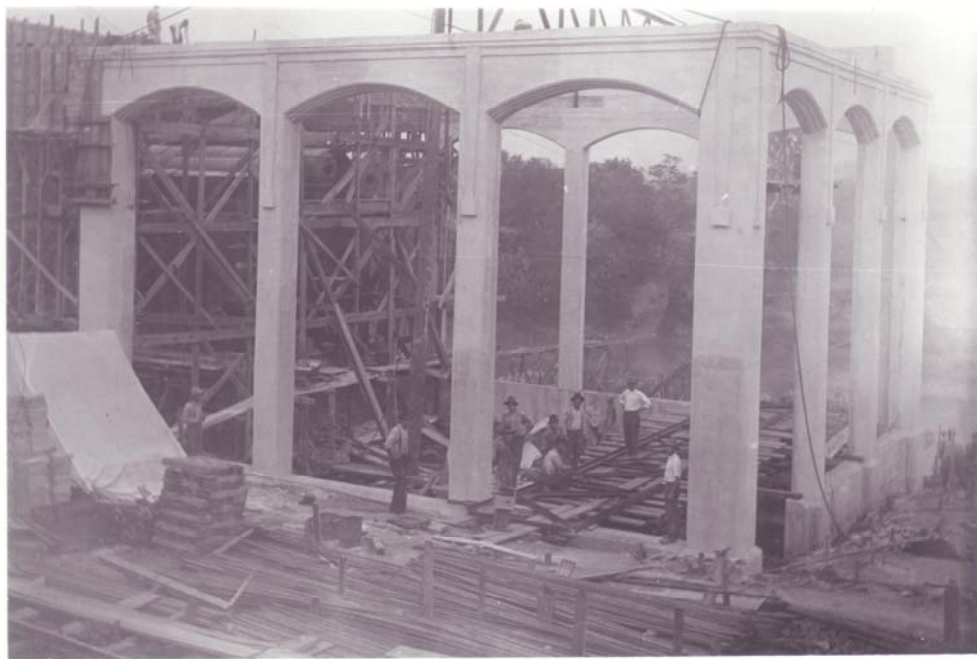


26

1910 – Williams Historic dam, construction photograph.



1910 – Williams Historic dam, construction photograph.



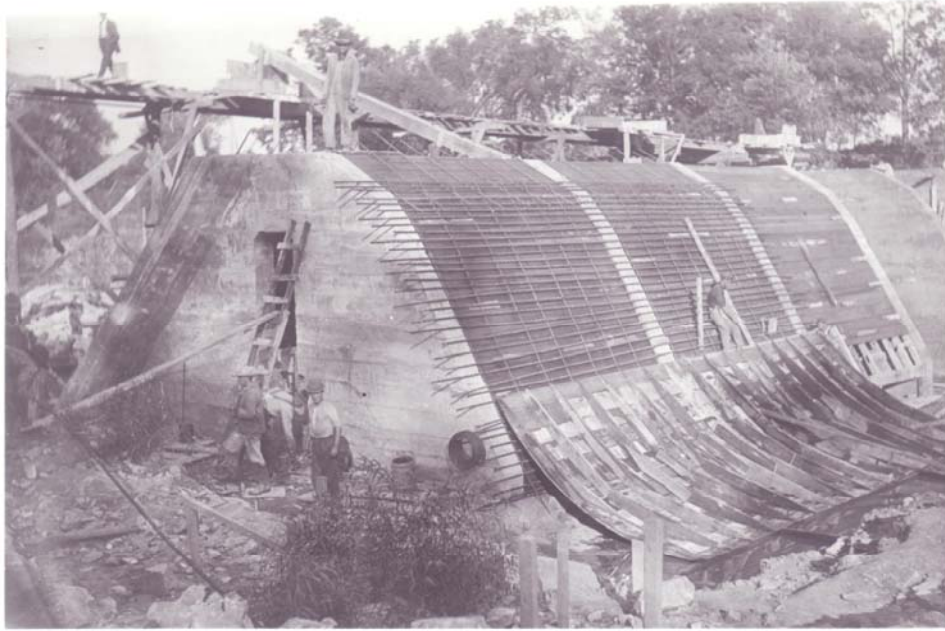
1910 – Williams Historic dam, construction photograph.



1910 – Williams Historic dam, construction photograph.



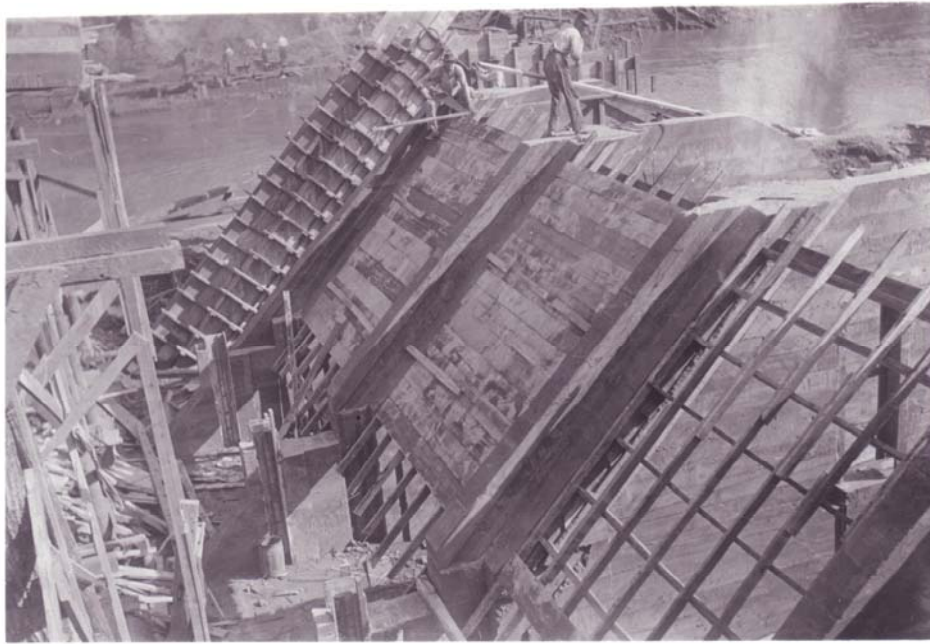
1910 – Williams Historic dam, construction photograph.



1910 – Williams Historic dam, construction photograph.



1910 – Williams Historic dam, construction photograph.



33

1910 – Williams Historic dam, construction photograph.



34

1910 – Williams Historic dam, construction photograph.



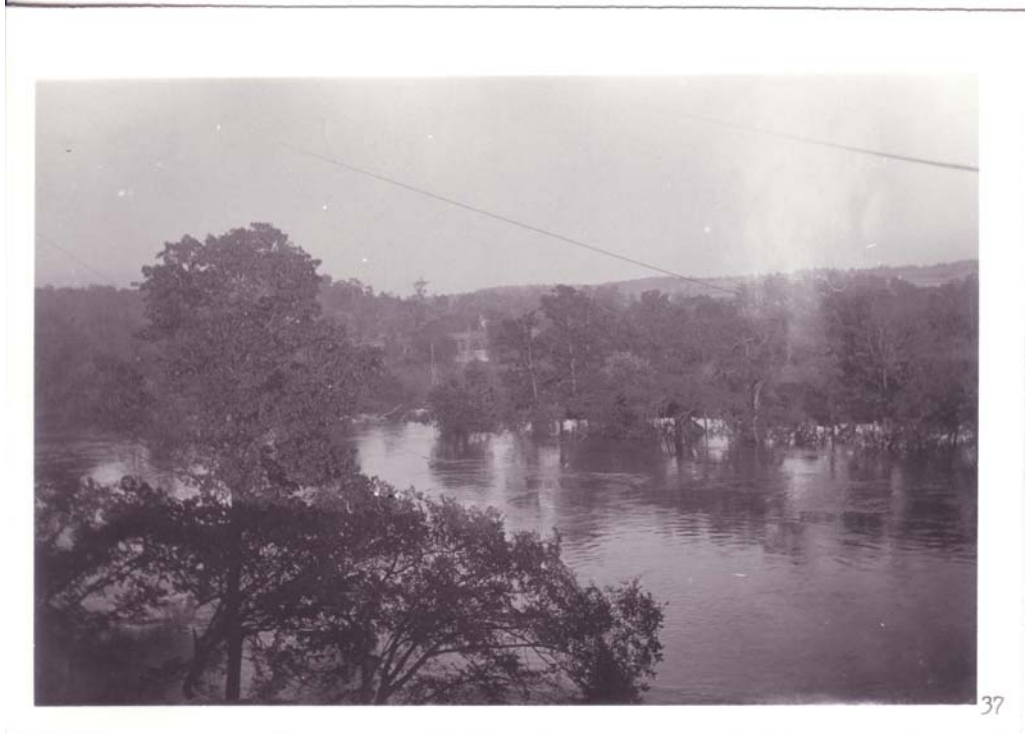
35

1910 – Williams Historic dam, construction photograph.



36

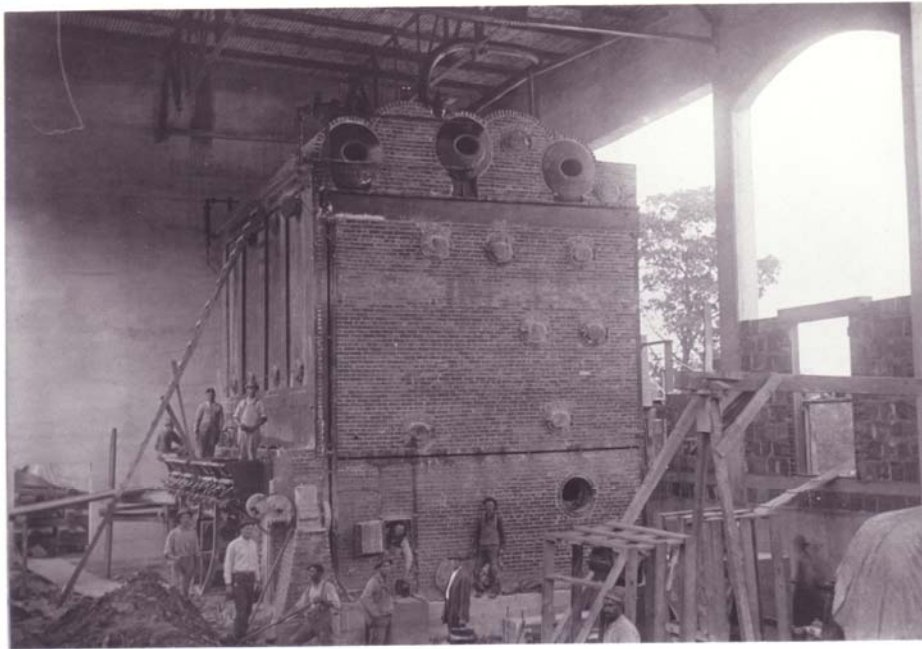
1910 – Williams Historic dam, construction photograph.



1910 – Williams Historic dam, construction photograph.



1910 – Williams Historic dam, construction photograph.



39

1910 – Williams Historic dam, construction photograph.

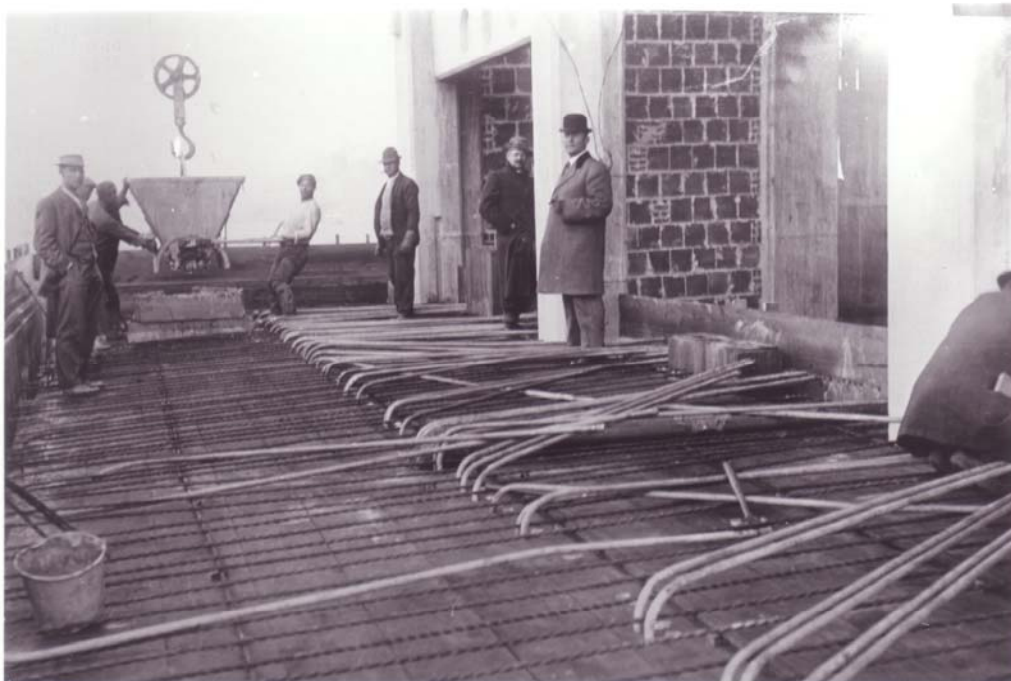


40

1910 – Williams Historic dam, construction photograph.



11/9/1910 – Quarry wheel pit excavations.



11/20/1910 – Roof of remote control room. Conduits and reinforcement in place.



11/20/1910 – Down stream openings of dam. Opened November 11, 1910.



11/29/1910 – View of dam from boiler room level. Water over new coffer dam.



45

11/29/1910 – Wheel pit excavation and tram track around dam.



46

12/21/1910 – View of work from opposite side. Tram car on trestle over coffer dam to east bank. Forms in place for tunnel openings.



12/30/1910 – View looking northeast from southeast corner of boiler house.



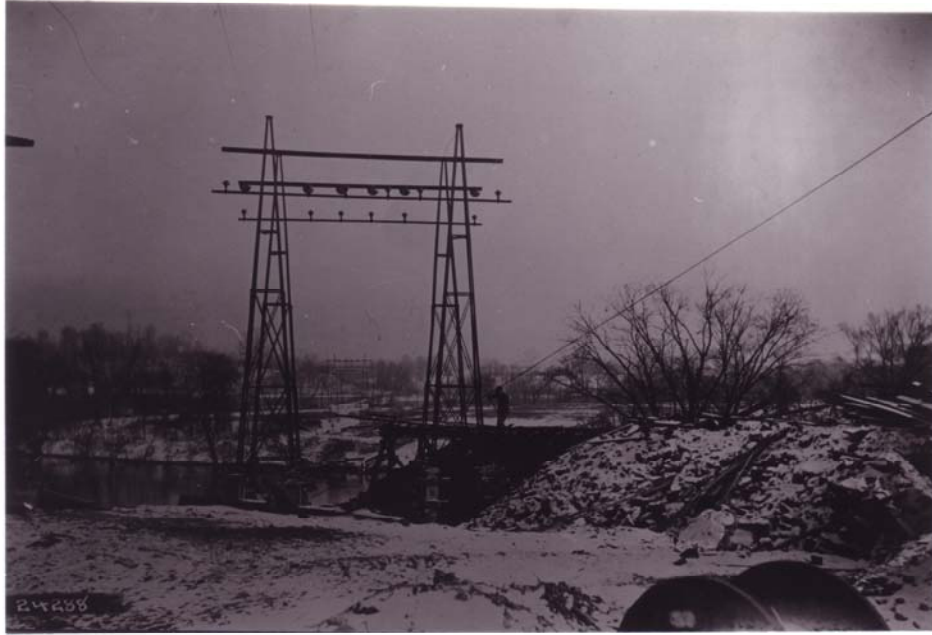
12/30/1910 – View of flood looking east from runway to mixer.



1/4/1911 – View of flood looking east from runway to mixer.



1/17/1911 – View of flood looking east from runway to mixer. Mixer removed.



1/17/1911 – View of dead end and transmission line.

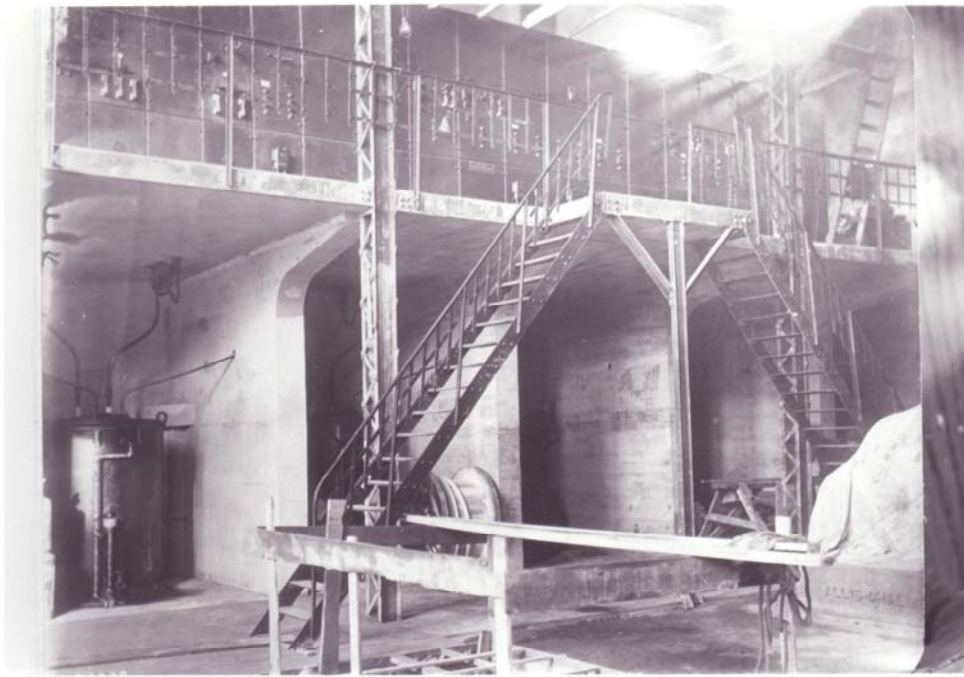


1/18/1910 – View of building from Smith's Orchard.



53

2/1/1911 – View of dam. Elevation of water 475.



54

2/8/1911 – Switch board railing and stairs.



2/15/1911 – View of wheel pit excavations.



2/15/1911 – View of dam and pile driver boat.



57

2/16/1911 – View of derrick from stone pile.



58

2/16/1911 – View of derrick from roof of remote control room.



2/16/1911 – Testing strength of main transmission tower. View of tower after failure.



3/11/1911 – View of work and flood from opposite bank.



61

3/21/1911 – Wheel pit excavations.



62

3/21/1911 – Birdseye view from top of hill on opposite bank.



4/6/1911 – View of Williams property. Water elevation 476.



4/6/1911 – View of flood and buildings from opposite bank. Water elevation 476.



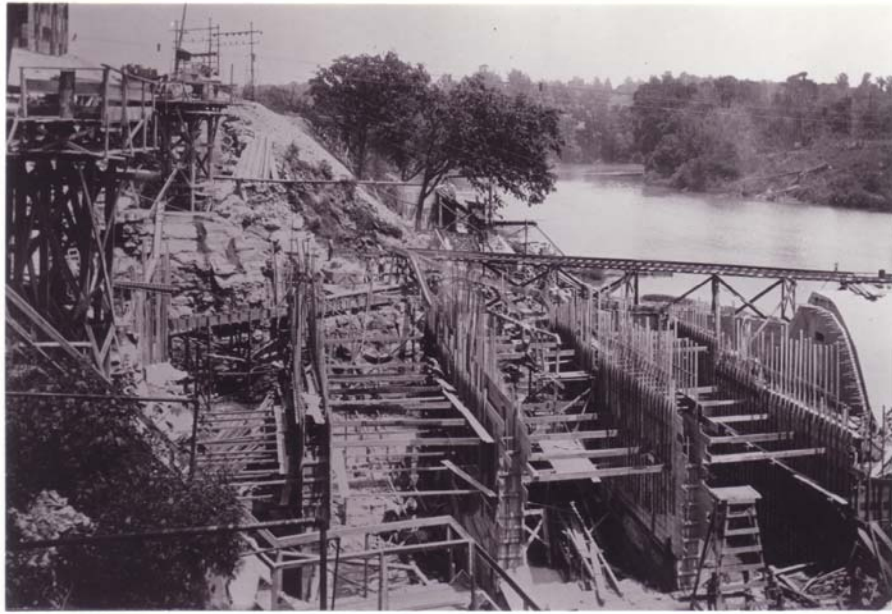
65

7/18/1911 – General view toward east from west bank. South of boiler room.



66

7/18/1911 – Excavation in east portion of dam from completed portion of dam.



7/18/1911 – Forms in wheel pits.



7/18/1911 – Abutment from rear showing back fill.



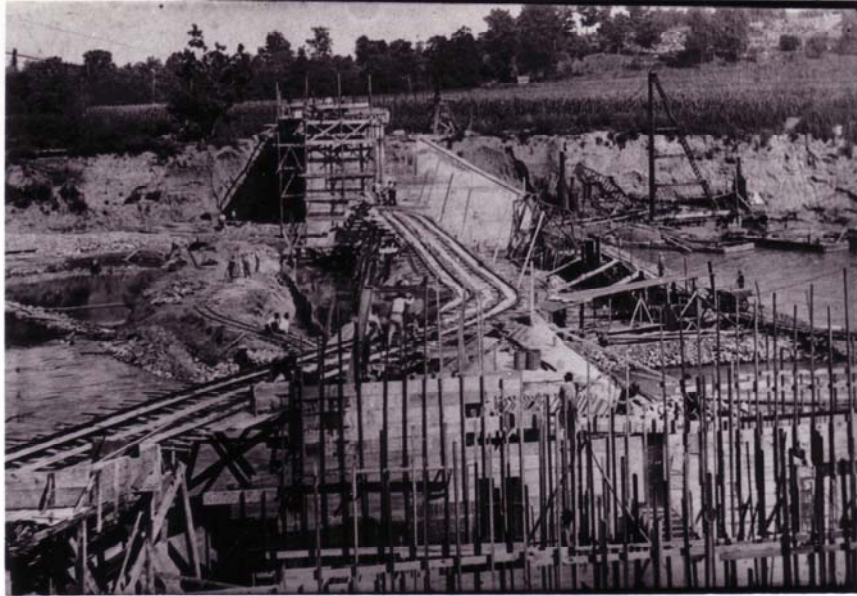
69

7/20/1911 – Concreting in mattress of east portion of dam.



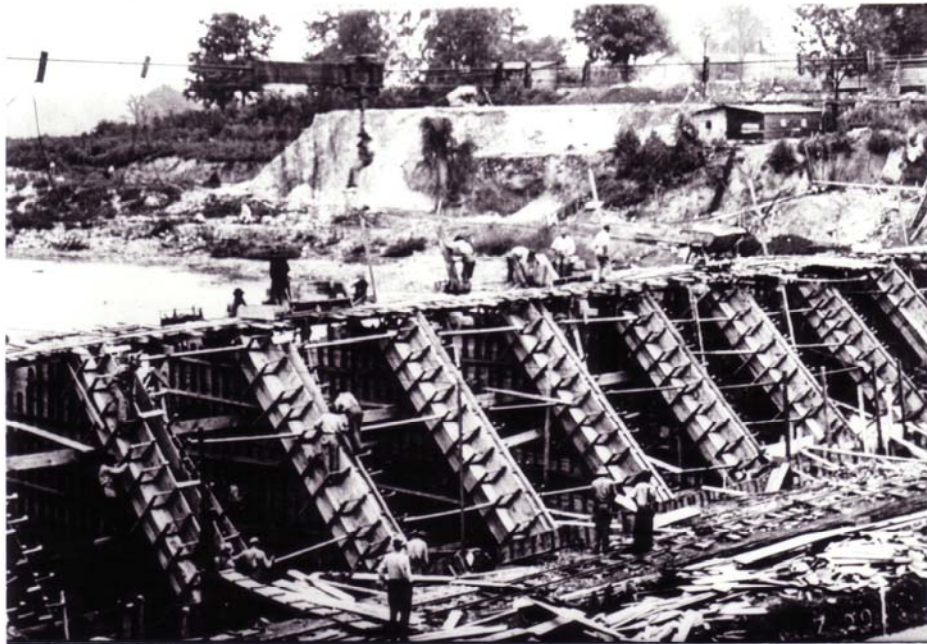
70

7/25/1911 – Concreting mattress of dam, showing buttress forms.



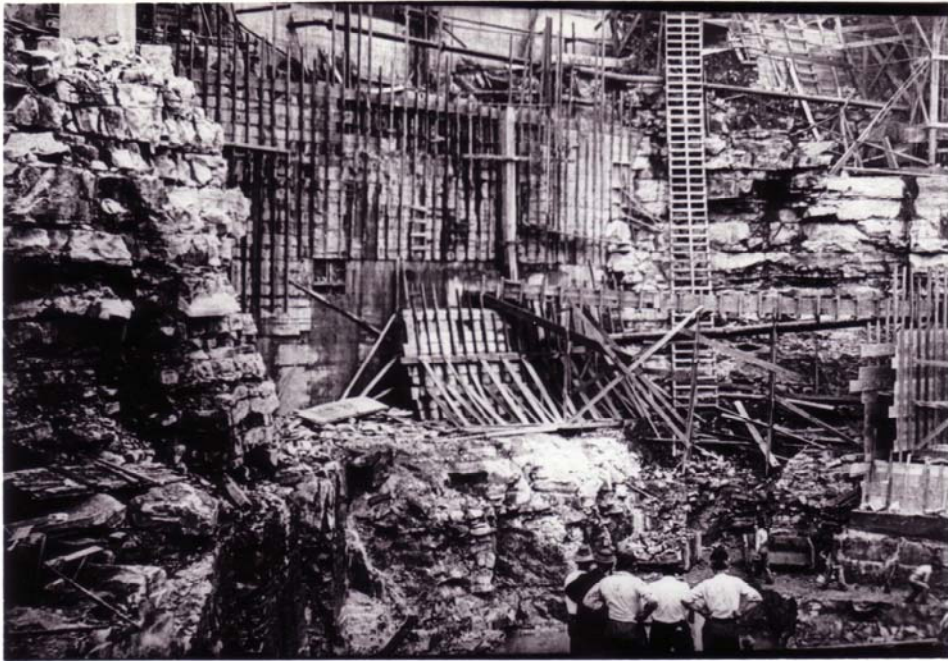
71

Construction on Williams Dam.



72

Construction on Williams Dam.



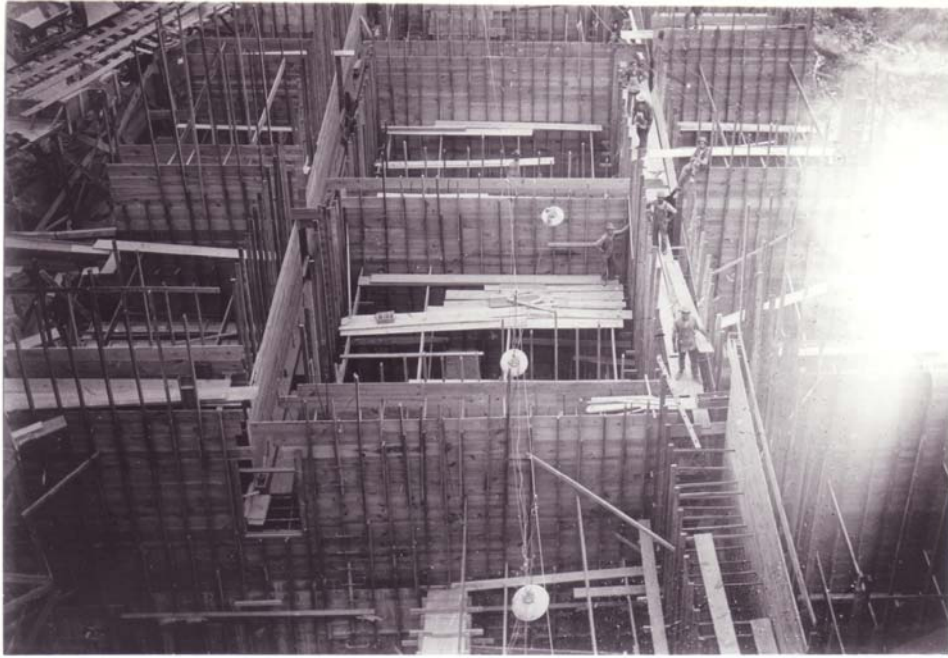
73

Construction on Williams Dam.



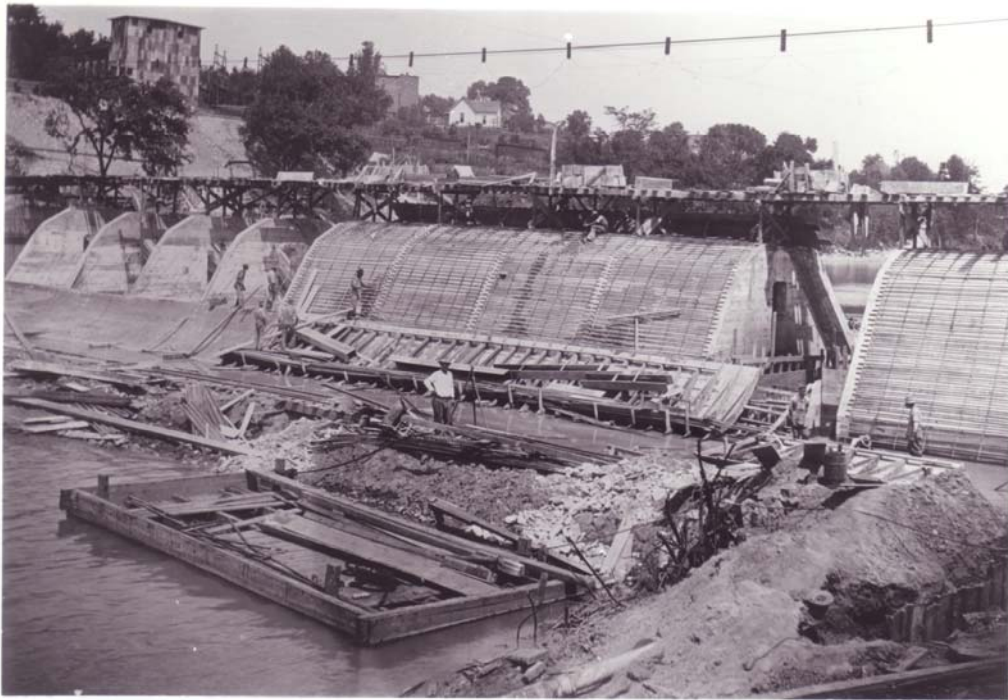
74

8/2/1911 – Concreting top of mattress, apron coating.



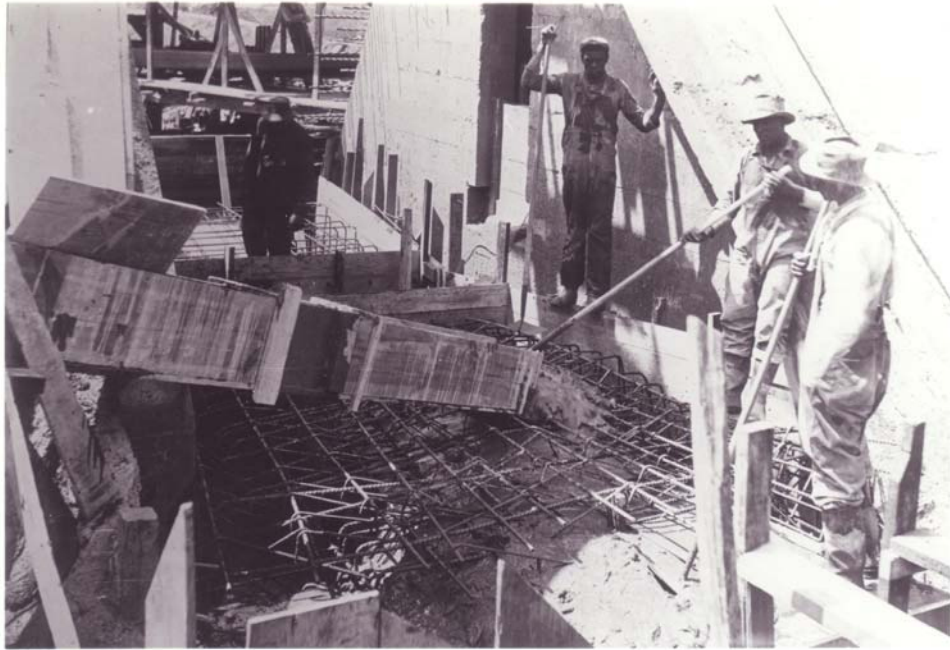
75

8/5/1911 – Wheel pit forms from steam end roof.

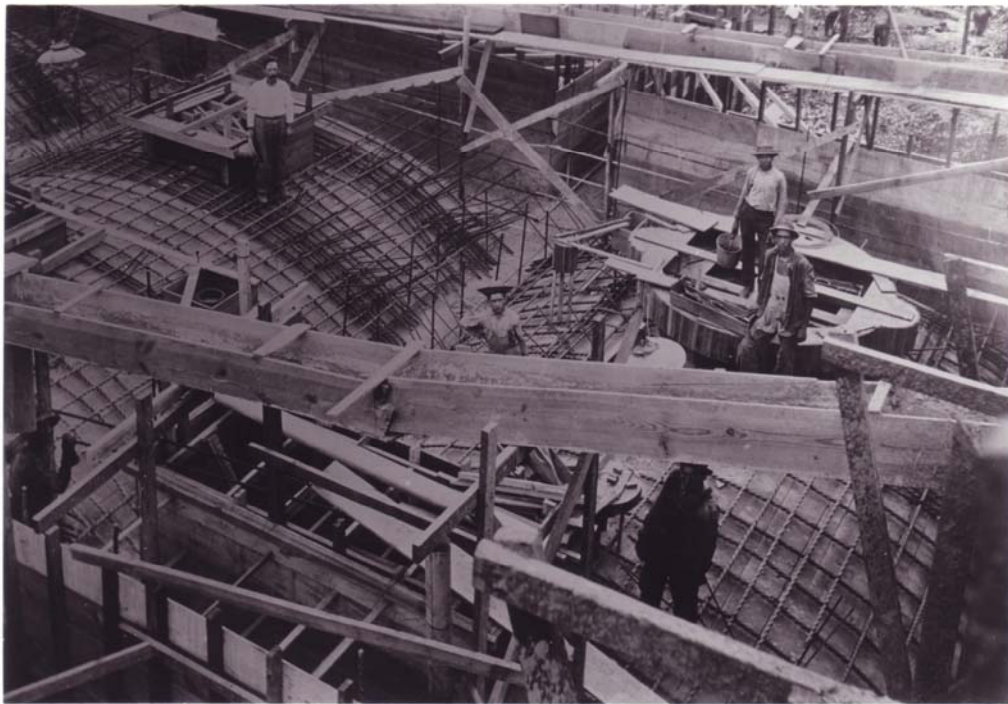


76

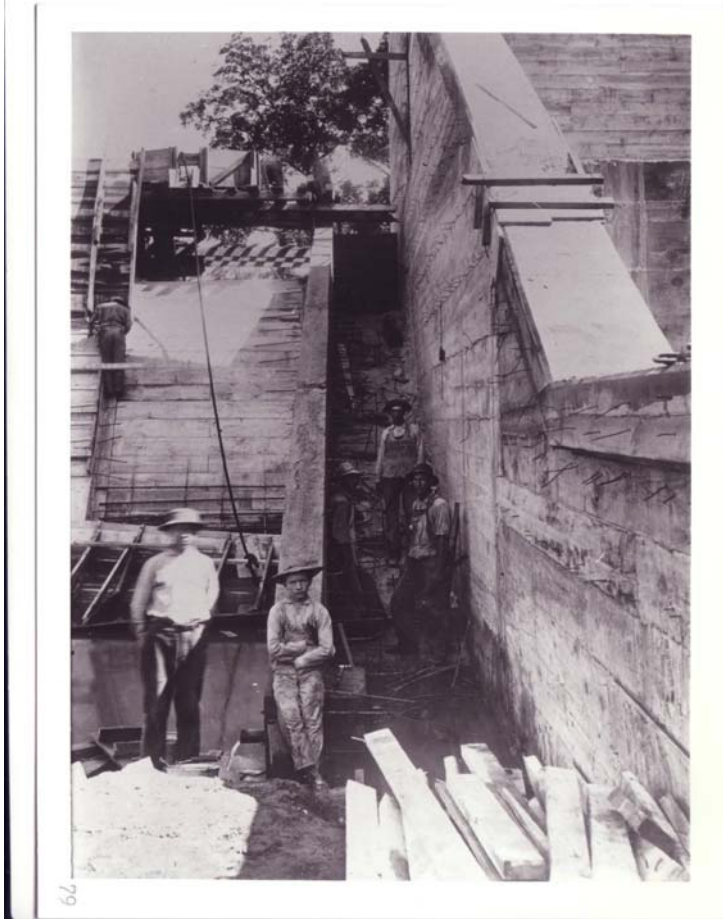
8/5/1911 – Apron (concrete forms and reinforcement).



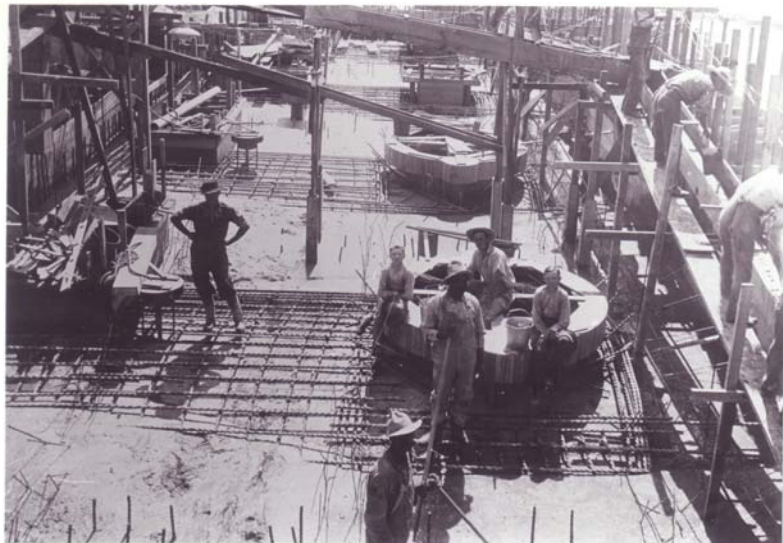
8/11/1911 – Centering and reinforcement for middle sluiceway.



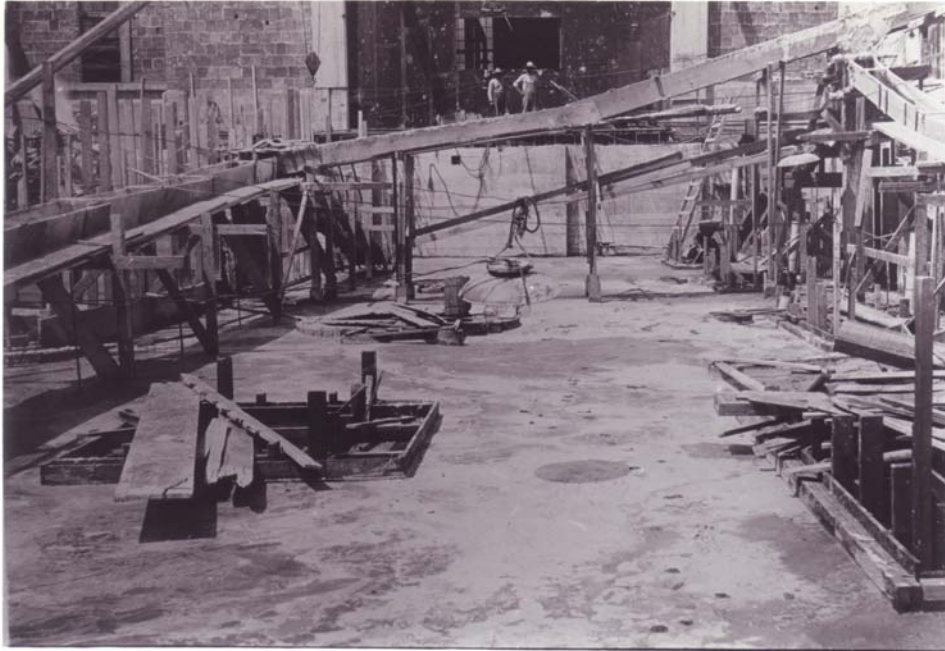
8/17/1911 – Reinforcement thrust bearing floor from pouring tower.



8/18/1911 – Fishway sidewalk and steel.



8/18/1911 – Concreting thrust bearing floor.



81

8/19/1911 – Thrust bearing floor concreted to elevation 488.75.



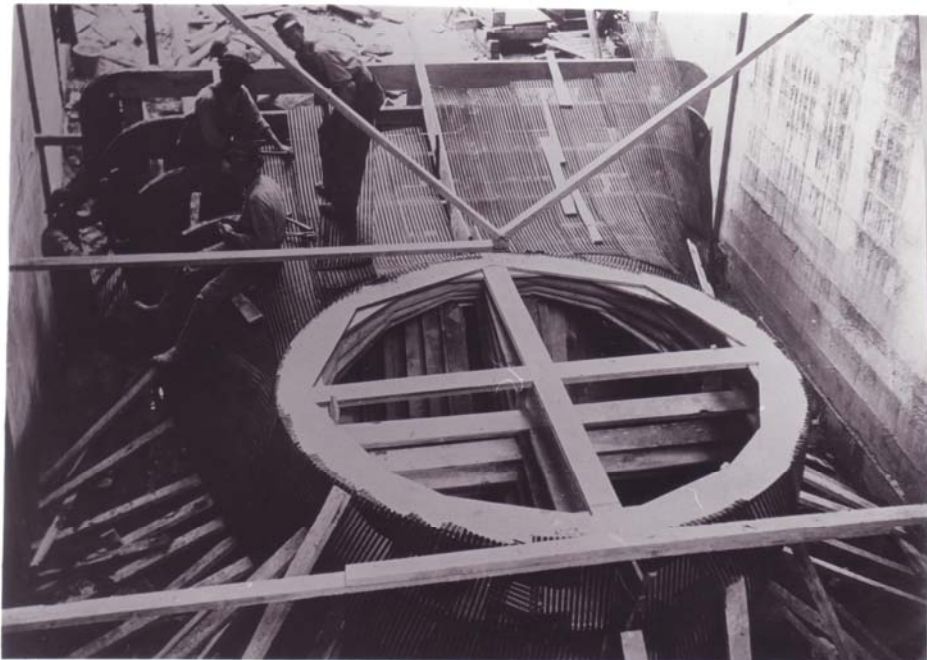
82

8/19/1911 – Excavation in tail race from top of dam.



83

8/22/1911 – General view toward east from top of south dump.



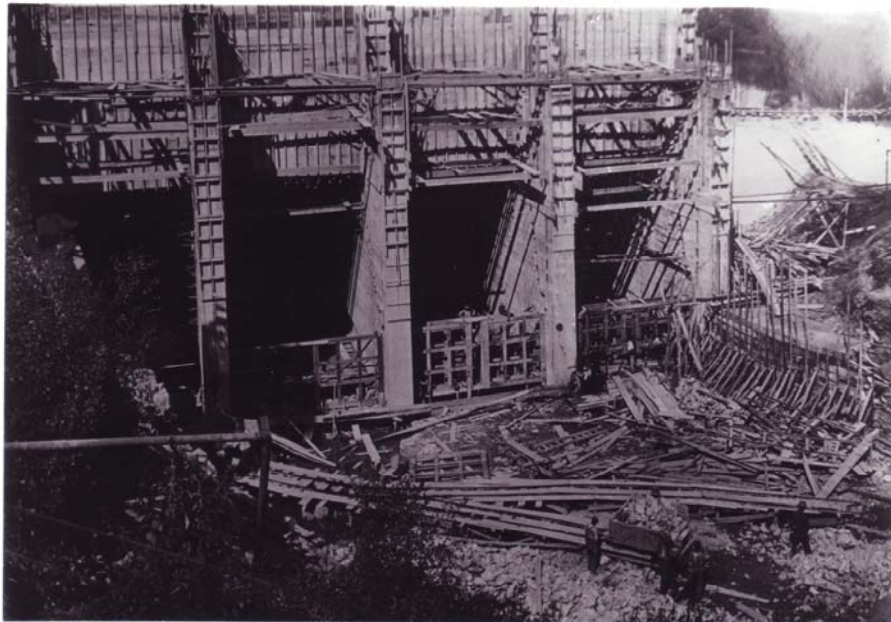
84

8/24/1911 – Lower draft tube #4.



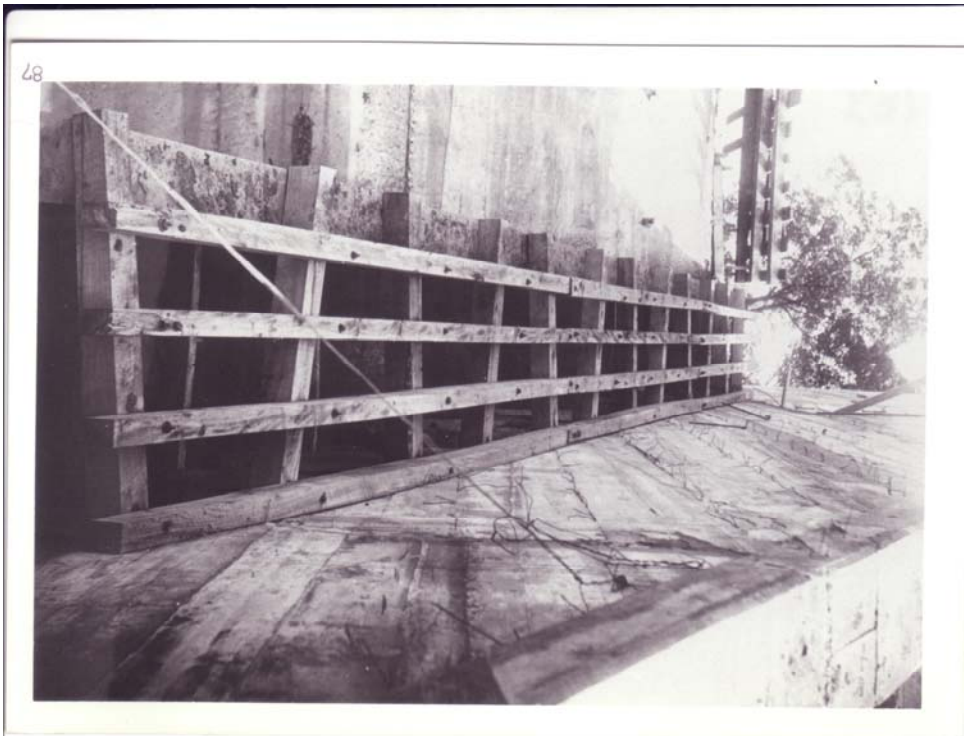
85

8/31/1911 – Concreting lower draft tube #3.



86

8/31/1911 – Wheel pits and tail race.



9/6/1911 – Completed fishway.

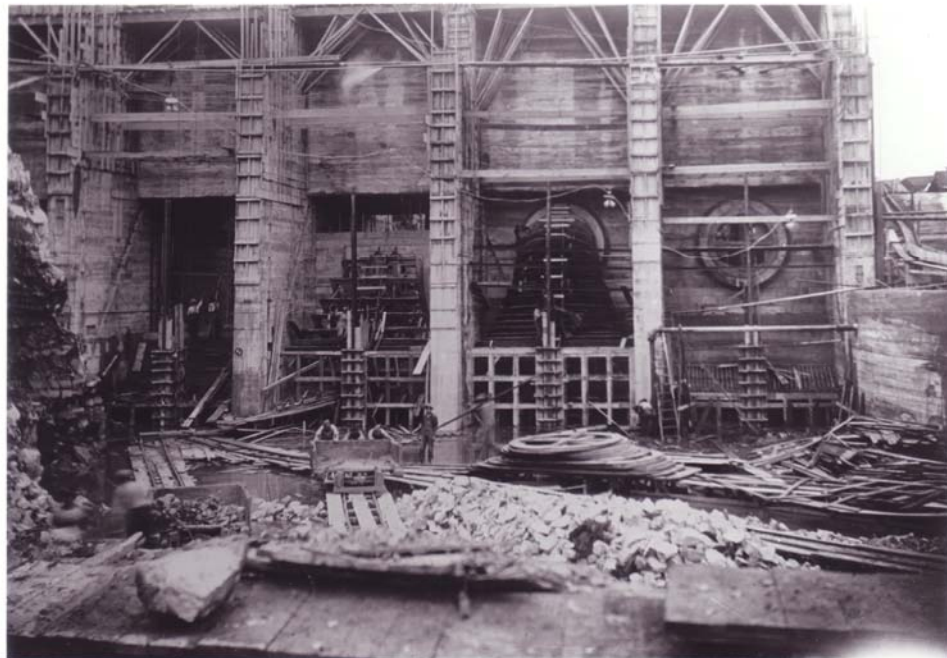


9/6/1911 – 1750 KW turbine foundation.



89

9/6/1911 – Mixing and distributing plant and machinery platform.

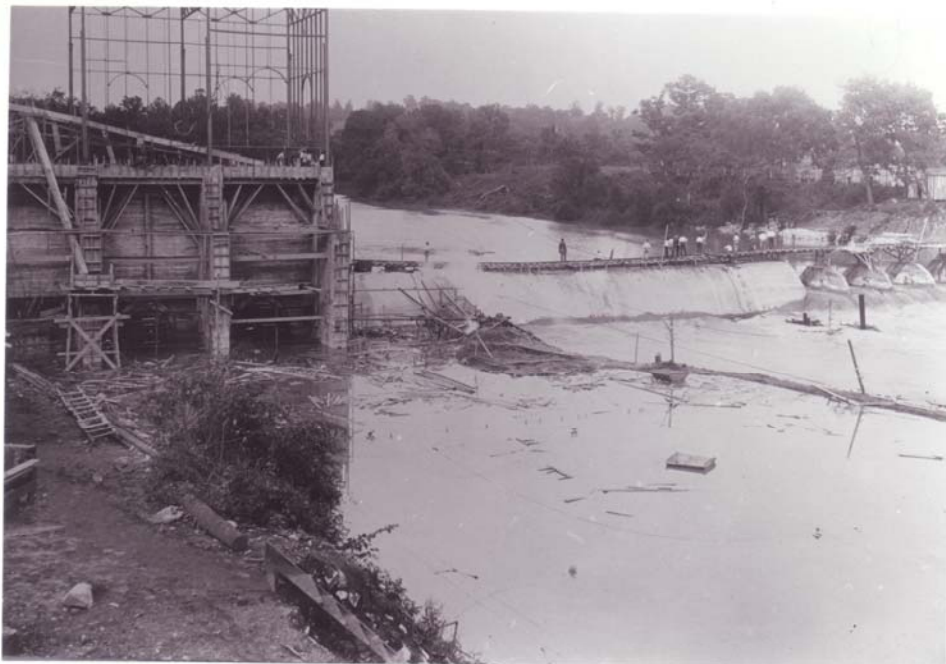


90

9/13/1911 – Draft tubes from tail race.



9/17/1911 – River over concrete coffer dam. Removing drift from cableway.



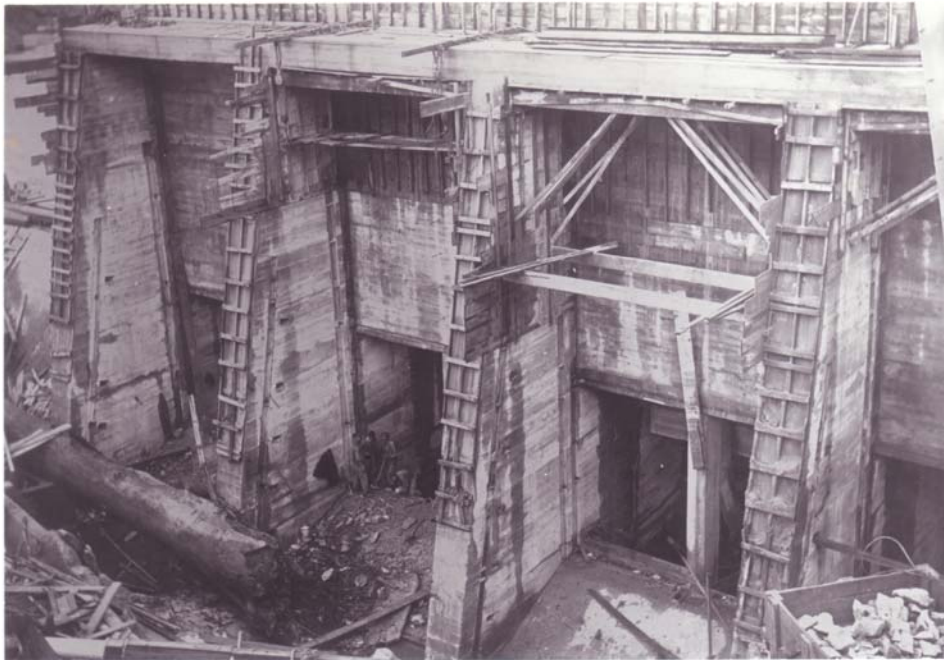
9/17/1911 – General condition from top of south dam.



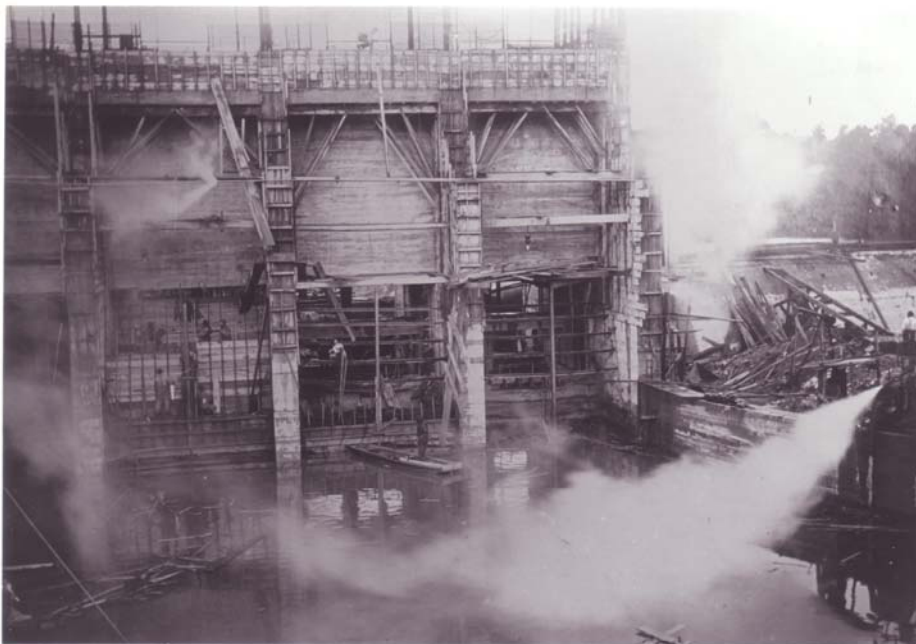
9/19/1911 – Water flowing over dam and through wheel pit.



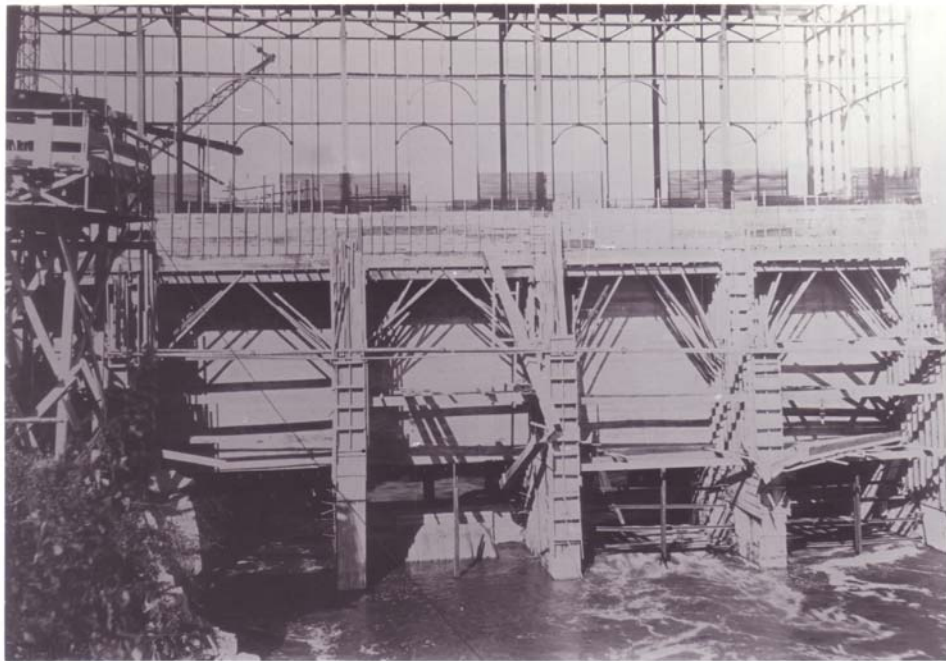
9/21/1911 – View of drift, etc., from top of cast abutment.



9/28/1911 – Completed operating slab. Work on head gate slides.



9/28/1911 – Draft tubes after high water. Rebuilding #2.



97

9/29/1911 – Condition in wheel pits. Water at 463.

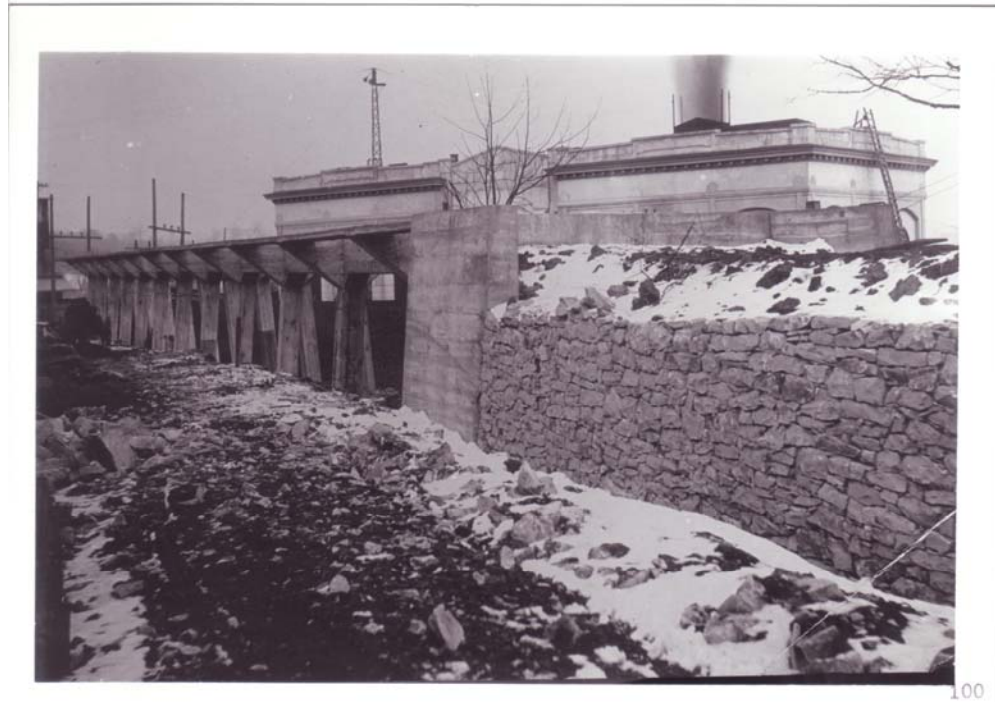


98

9/29/1911 – Concreting roof slab. Water wheel building.



2/14/1912 – View of trestle from north end.



2/14/1912 – View of coal trestle from south end also showing abutment and dry well.



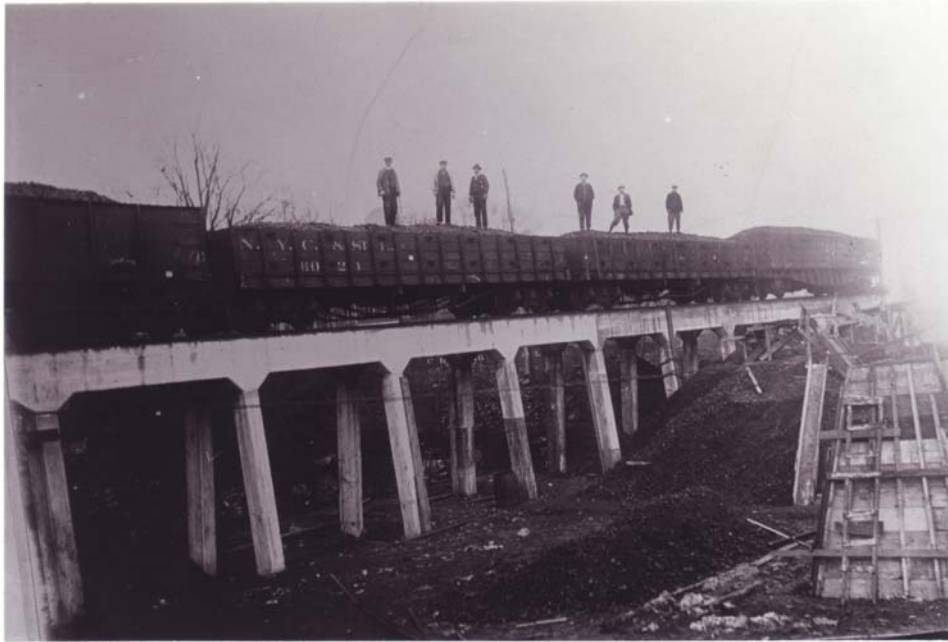
101

12/31/1911 – Showing damage by log to downstream side of first bay of dam.



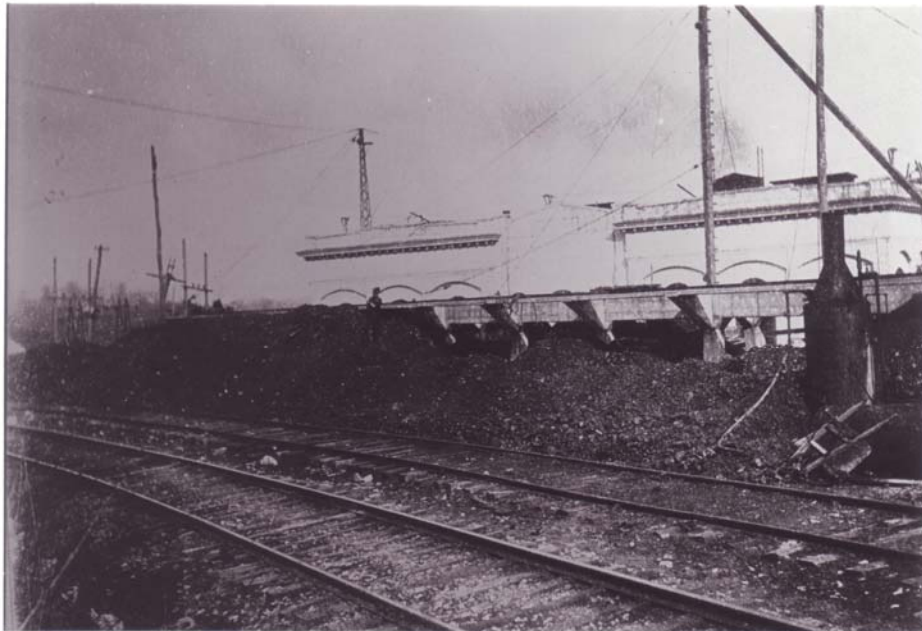
102

1/23/1912 – Ice flow over dam.



103

2/13/1912 – View of coal trestle from north end.



104

2/13/1912 – View of coal trestle from south side.



4/14/1912 – View of coal supply under trestle and coal derrick.



6/6/1912 – View of tail race excavation hole pumped out.



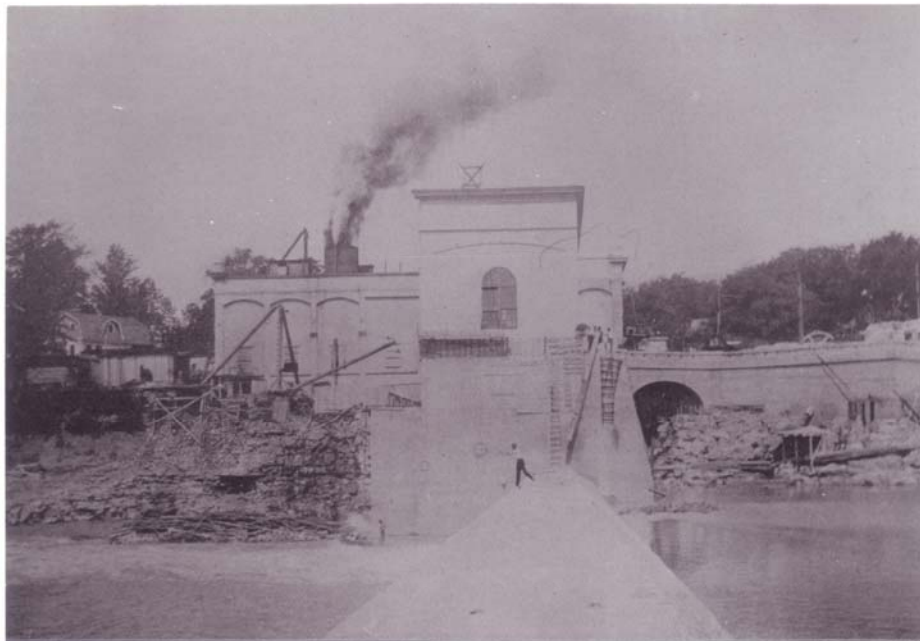
107

3/1/1912 – Flood scene from rear of office. Water to elevation 488.



108A

7/11/1912 – View of tail race after Vess Stout was drowned.



108B

7/14/1912



109

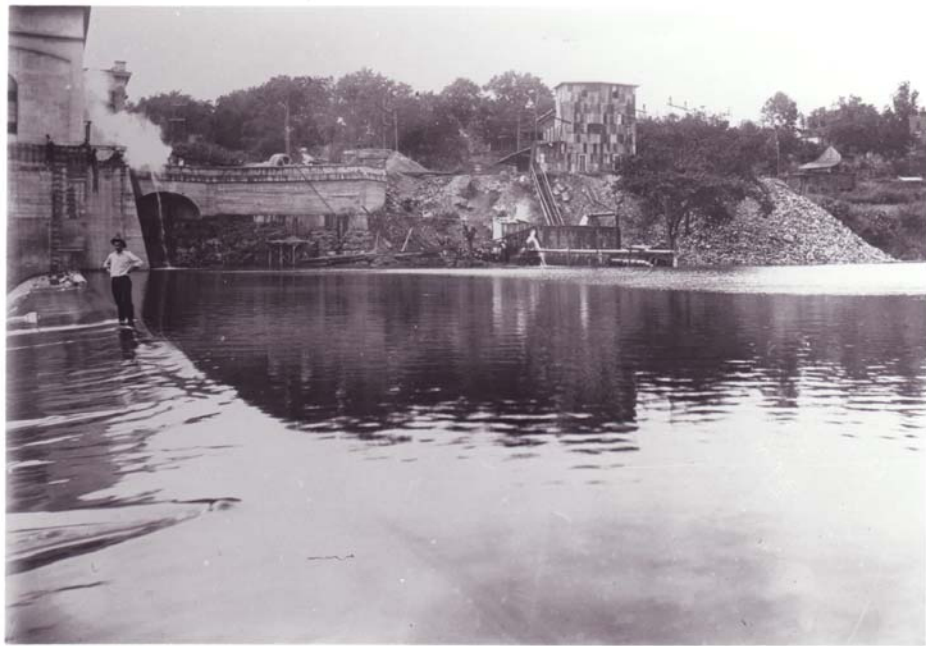
8/5/1912 – View showing forms and reinforcing in repairing damaged section of dam and “blowout”.



8/7/1912 – Water passing repaired portion of dam. Tail race elevation 459.



8/9/1912 – Downstream from dam. All gates closed, pond filling, water elevation 455.



112

8/9/1912 – Pond full, water elevation 475.08. From fish ladder.



113

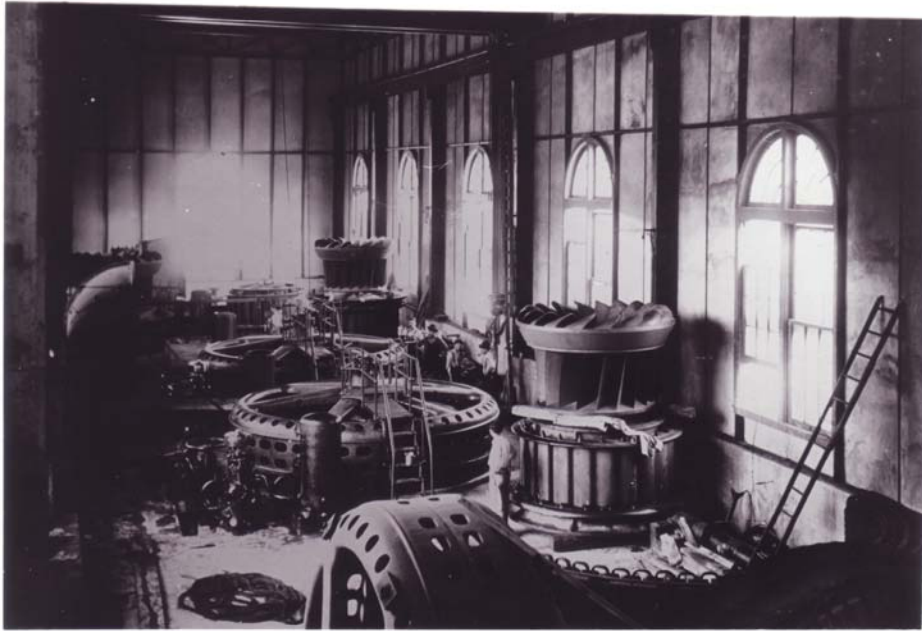
8/9/1912 – View showing repaired portion of dam on downstream side.



8/12/1912 – Showing spillway and tail race. Elevation tail water 461.9.



8/13/1912 – View of tail race and spillway, water elevation 459.9.



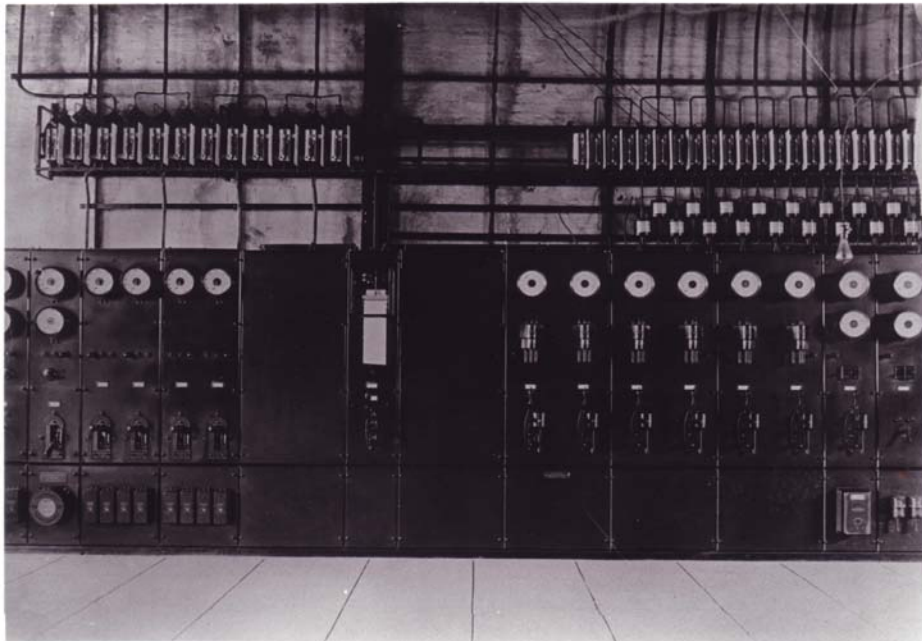
116

Inside hydroelectric power house.



117

Upstream from dam.



118

Switchboard in power house.



119

S.I. depot during 1913 flood.



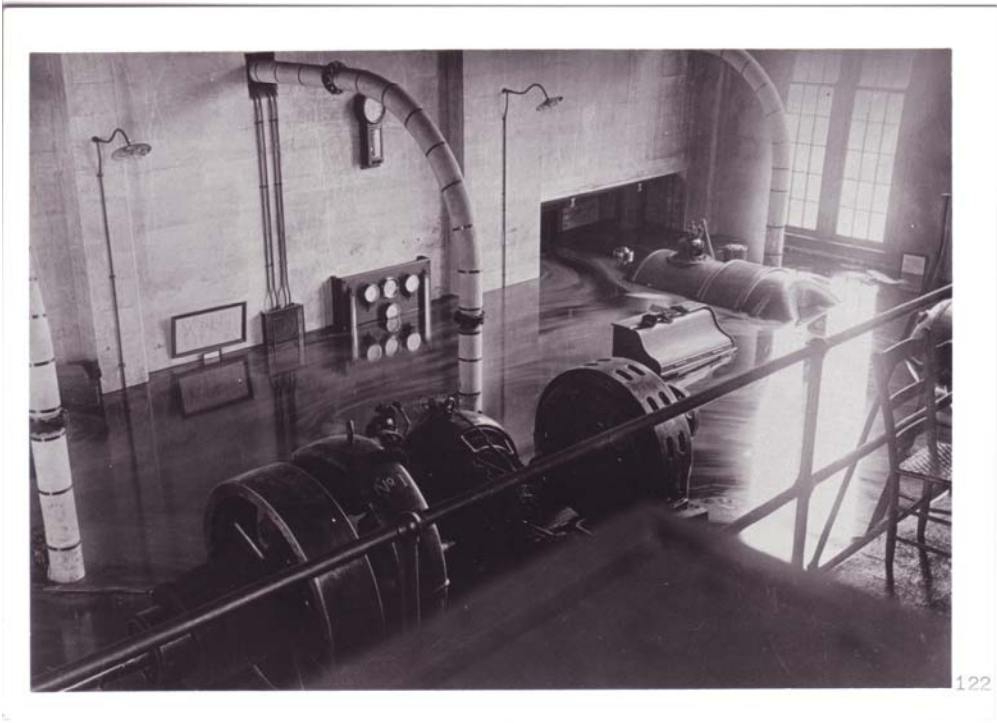
120

Hotel during 1913 flood.

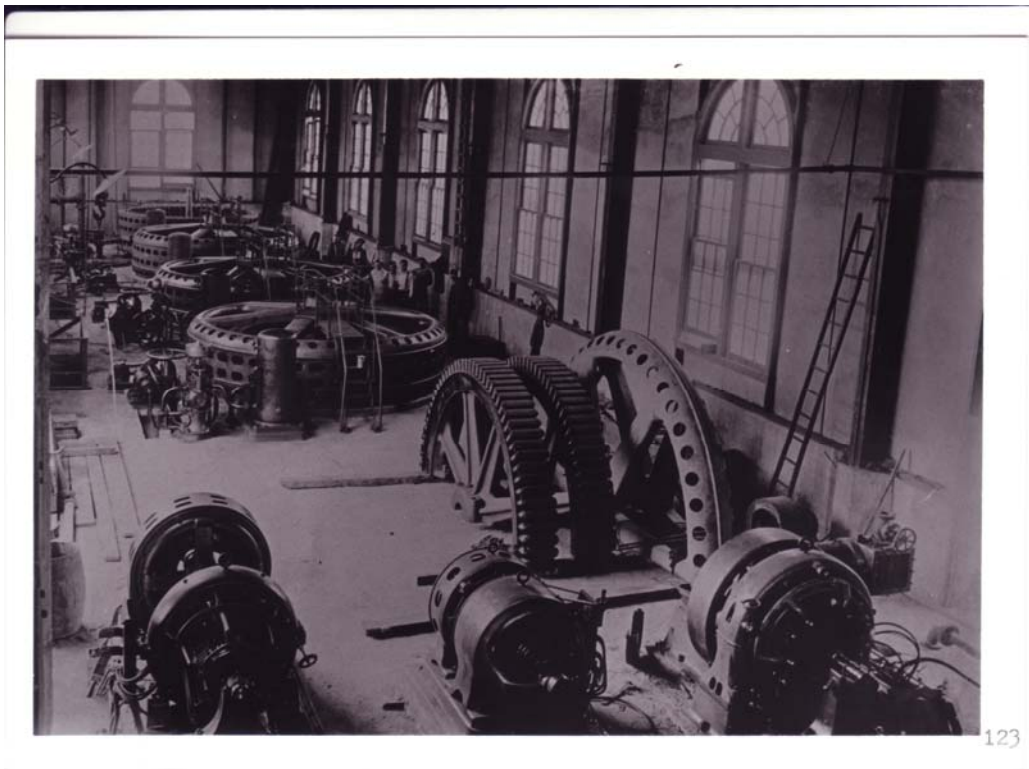


121

1913 flood.



1913 flood.

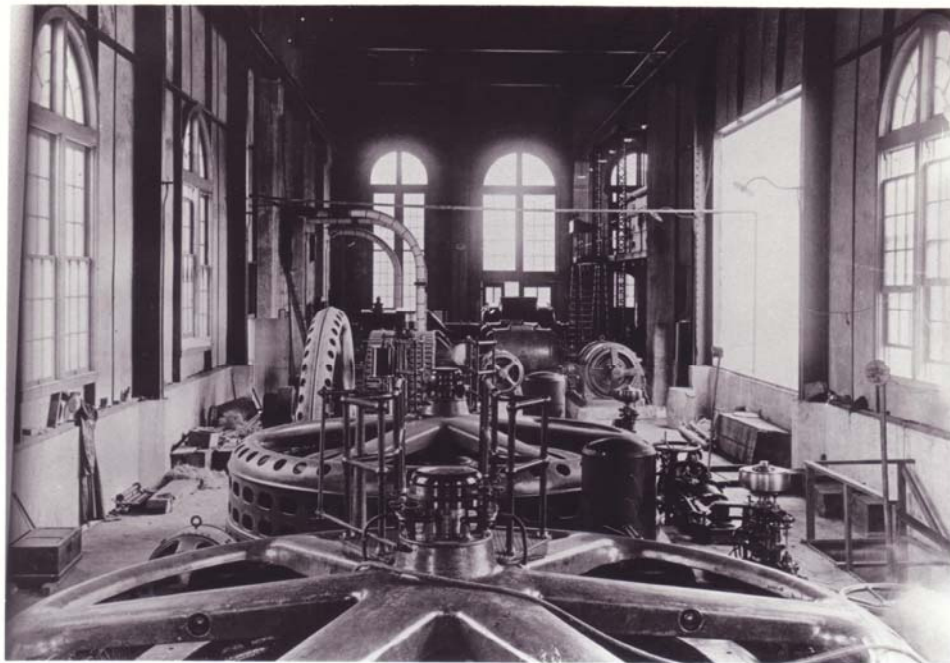


1913 flood.



124

1913 flood.



125

Inside hydroelectric power house.



1913 flood.