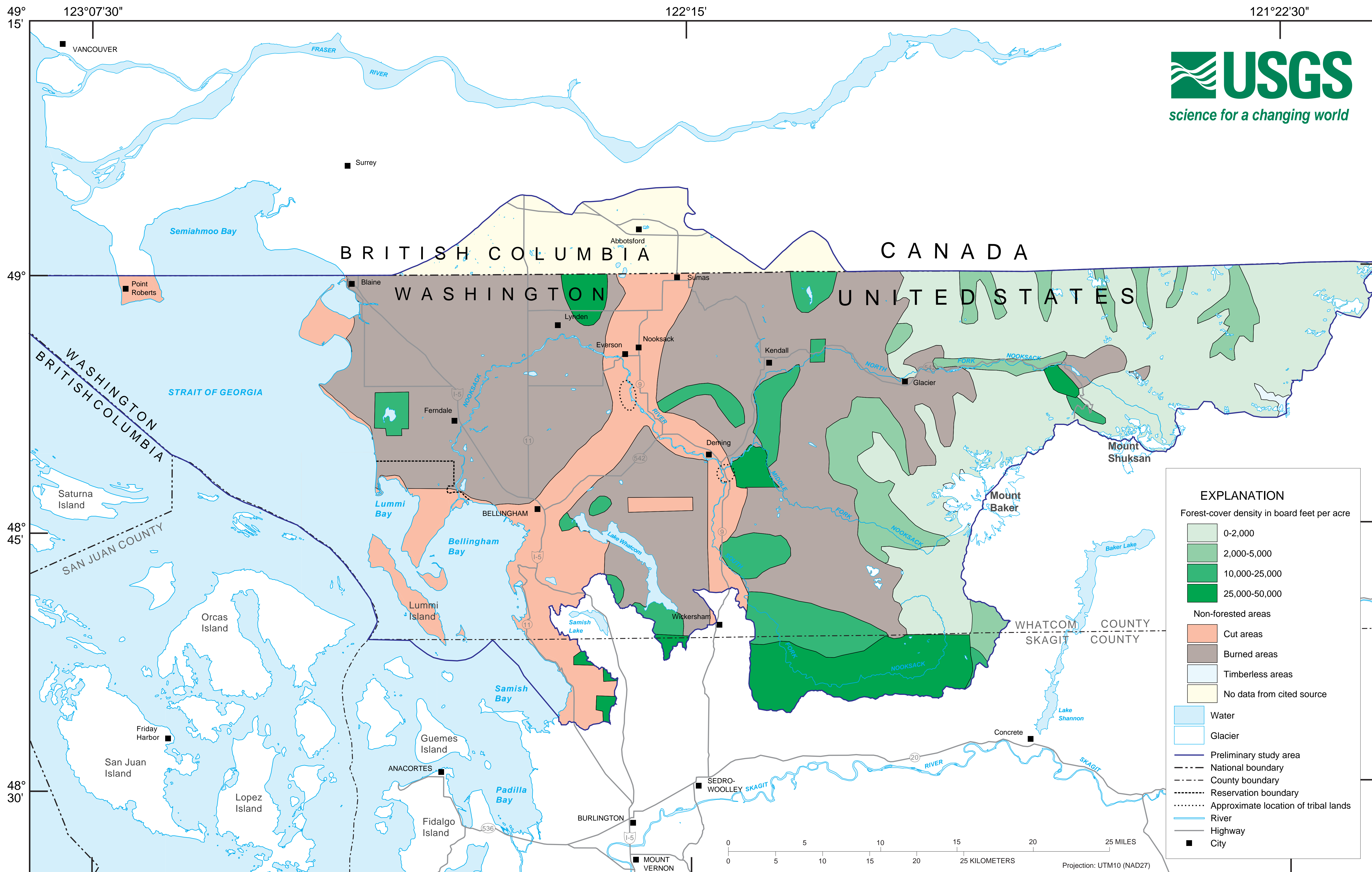


# Forest Cover in the WRIA 1 Study Area in 1898



Modified from: Rankine, J.W., and Plummer, G.H., 1898. Map of western Washington, showing classification of lands: U.S. Geological Survey Annual Report 19 (1898), pt. 5, pl. 3.

Provisional and subject to revision  
Last modified, January 31, 2000