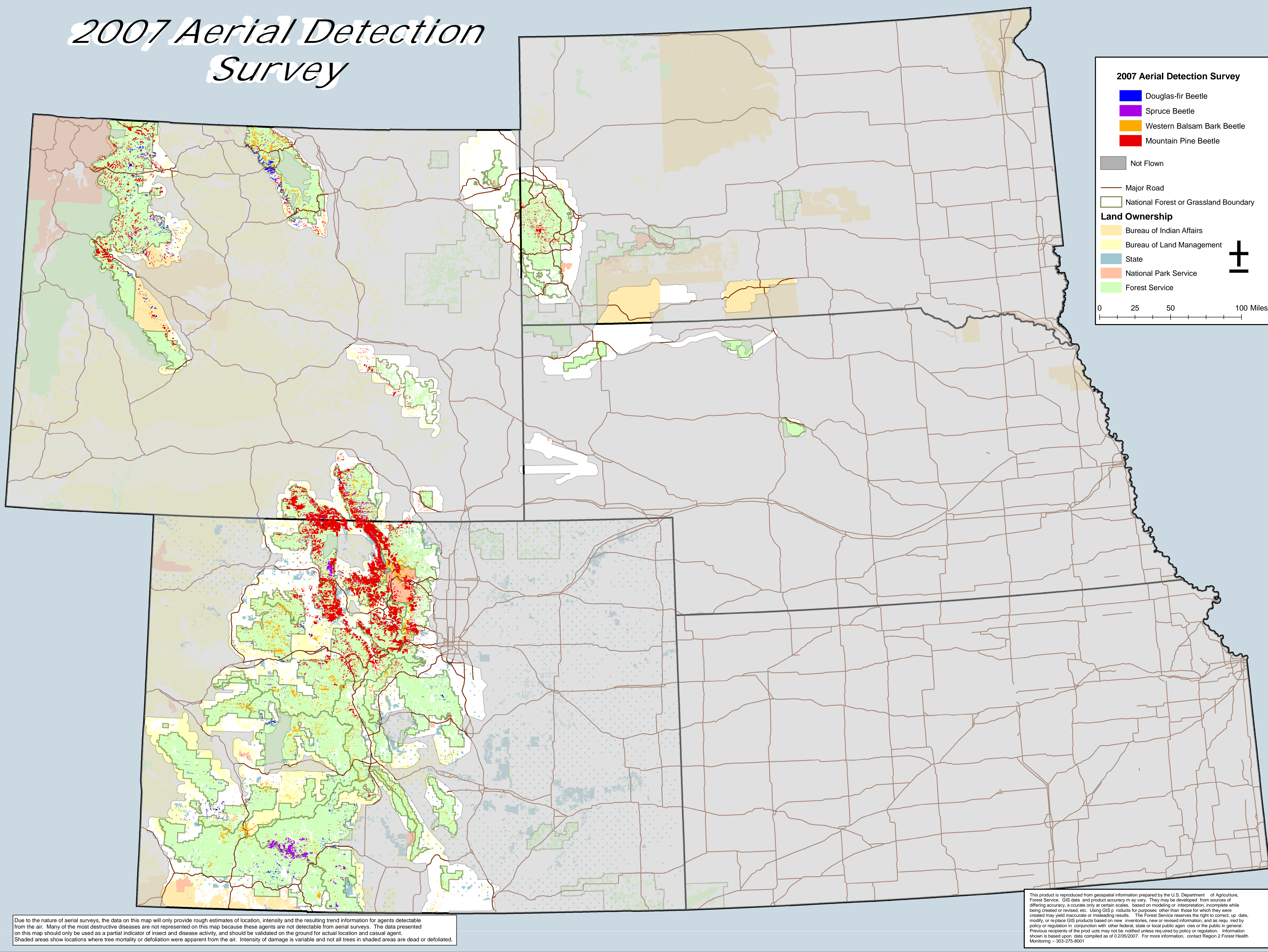


# 2007 Aerial Detection Survey

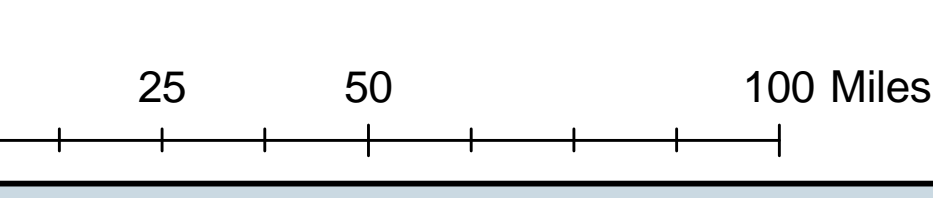


## 2007 Aerial Detection Survey

- Douglas-fir Beetle
- Spruce Beetle
- Western Balsam Bark Beetle
- Mountain Pine Beetle

- Not Flown
- Major Road
- National Forest or Grassland Boundary

- ### Land Ownership
- Bureau of Indian Affairs
  - Bureau of Land Management
  - State
  - National Park Service
  - Forest Service



Due to the nature of aerial surveys, the data on this map will only provide rough estimates of location, intensity and the resulting trend information for agents detectable from the air. Many of the most destructive diseases are not represented on this map because these agents are not detectable from aerial surveys. The data presented on this map should only be used as a partial indicator of insect and disease activity, and should be validated on the ground for actual location and causal agent. Shaded areas show locations where tree mortality or defoliation were apparent from the air. Intensity of damage is variable and not all trees in shaded areas are dead or defoliated.

This product is reproduced from geospatial information prepared by the U.S. Department of Agriculture, Forest Service. GIS data and product accuracy may vary. They may be developed from sources of differing accuracy, accurate only at certain scales, based on modeling or interpretation, incomplete while being created or revised, etc. Using GIS products for purposes other than those for which they were created may yield inaccurate or misleading results. The Forest Service reserves the right to correct, update, modify, or replace GIS products based on new inventories, new or revised information, and as required by policy or regulation in conjunction with other federal, state or local public agencies or the public in general. Previous recipients of the product may not be notified unless required by policy or regulation. Information shown is based upon data compiled as of 02/05/2007. For more information, contact Region 2 Forest Health Monitoring - 303-275-8001