



NEWS

Federal Communications Commission
445 12th Street, S.W.
Washington, D. C. 20554

News Media Information 202 / 418-0500
Internet: <http://www.fcc.gov>
TTY: 1-888-835-5322

This is an unofficial announcement of Commission action. Release of the full text of a Commission order constitutes official action.
See MCI v. FCC, 515 F 2d 385 (D.C. Circ 1974).

FOR IMMEDIATE RELEASE
December 22, 2004

NEWS MEDIA CONTACT:
Mark Wigfield at (202) 418-0253
Email: mark.wigfield@fcc.gov

FEDERAL COMMUNICATIONS COMMISSION RELEASES DATA ON LOCAL TELEPHONE COMPETITION

Washington, D.C. – The Federal Communications Commission (FCC) today released new data on local telephone service competition in the United States. Twice a year, telecommunications carriers must report the number of lines in service and mobile wireless telephone subscribership pursuant to FCC's local competition and broadband data gathering program (FCC Form 477).

Statistics released today reflect data as of June 30, 2004, filed by providers on FCC Form 477 in the Commission's local competition and broadband data gathering program. For purposes of this report, carriers with at least 10,000 switched access lines, or at least 10,000 mobile wireless telephone service subscribers, in a state were required to file.

Summary Statistics

- Total CLEC end-user switched access lines increased by 7% during the first half of 2004, from 29.8 million to 32.0 million lines. By comparison, they increased by 10% during the preceding six months, from 27.0 to 29.8 million lines. For the full twelve-month period ending June 30, 2004, CLEC end-user lines increased by 19%.
- End-user customers obtained local telephone service by utilizing approximately 148.1 million incumbent local exchange carrier (ILEC) switched access lines, 32.0 million competitive local exchange carrier (CLEC) switched access lines, and 167.3 million mobile wireless telephone service subscriptions.
- About 17.8% of the 180.1 million total end-user switched access lines (or 32.0 million lines) were reported by CLECs at end of June 2004, compared to 16.3% (or 29.8 million lines) in December 2003.
- Nationwide, mobile wireless telephone subscribers increased 7% during the first half of 2004 from 157.0 million to 167.3 million. For the full twelve-month period ending June 30, 2004, mobile wireless subscribers increased by 13%.
- CLECs reported 20.8 million (or 15%) of the 135.4 million lines that served residential and small business end users and 11.2 million (or 25%) of the 44.6 million lines that served medium and large business, institutional, and government customers.

- Local telephone service by CLECs was provided over 3.3 million coaxial cable connections at the end of June 2004. These lines represent about 45% of the 7.5 million switched access lines that CLECs reported providing over their own local loop facilities, about 10% of all switched access lines that CLECs reported, and about 2% of total switched access lines.
- CLECs reported providing about 23% of switched access lines over their own local loop facilities. To serve the remainder, CLECs resold the services of other carriers or used unbundled network element (UNE) loops that they leased from other carriers
- ILECs reported providing about 13% more UNE loops with switching (referred to as the UNE-Platform) to unaffiliated carriers at the end of June 2004 than they reported six months earlier (17.1 million compared to 15.2 million) and about 1% more UNE loops without switching (about 4.3 million).
- At least one CLEC reported switched access lines in service in all 50 states, the District of Columbia, and Puerto Rico. In 29 states, ten or more CLECs reported serving local telephone service customers.

As additional information becomes available, it will be posted on the Commission's Internet site.

The report is available for reference in the FCC's Reference Information Center, Courtyard Level, 445 12th Street, SW, Washington, DC. Copies may be purchased by calling Best Copy and Printing, Inc. at (800) 378-3160. The report can also be downloaded from the **FCC-State Link** Internet site at www.fcc.gov/wcb/stats.

- FCC -

Wireline Competition Bureau contacts: James Eisner and Ellen Burton at (202) 418-0940, TTY (202) 418-0484.

Local Telephone Competition: Status as of June 30, 2004

Industry Analysis and Technology Division
Wireline Competition Bureau
December 2004

This report is available for reference in the FCC's Reference Information Center, Courtyard Level, 445 12th Street, SW, Washington, DC. Copies may be purchased by contacting Best Copy and Printing, Inc., 445 12th Street, SW, Room CY-B402, Washington, DC 20554, telephone (800) 378-3160 or via their website at www.bcpweb.com. The report can also be downloaded from the **FCC-State Link** Internet site at www.fcc.gov/wcb/stats.

Local Telephone Competition: Status as of June 30, 2004

We present here summary statistics of the latest data on local telephone service competition in the United States as reported in the Commission's local competition and broadband data gathering program (FCC Form 477).¹ The summary statistics provide a snapshot of local telephone service competition based on switched access lines in service and state-specific mobile wireless telephone subscribership as of June 30, 2004.²

Based on the latest information now available, readers can draw the following broad conclusions:

- Competitive local exchange carriers (CLECs) reported 32.0 million (or 17.8%) of the approximately 180.1 million nationwide end-user switched access lines in service at the end of June 2004, compared to 29.8 million (or 16.3% of nationwide lines) in December 2003.³ This represents a 7% growth in CLEC market size during the first half of 2004. See Table 1.
- End-user customers obtained local telephone service by utilizing approximately 148.1 million incumbent local exchange carrier (ILEC) switched access lines, 32.0 million competitive local exchange carrier (CLEC) switched access lines, and 167.3 million mobile wireless telephone service subscriptions. See Tables 1 and 13.
- 65% of switched access lines in service to CLEC end-user customers served residential and small business customers, compared to 77% of lines in service to incumbent local exchange carrier (ILEC) end-user customers served residential and small business customers.⁴ See

¹ *Local Competition and Broadband Reporting*, CC Docket No. 99-301, Report and Order, 15 FCC Rcd 7717 (2000) (*Data Gathering Order*). During this data gathering program, qualifying providers file FCC Form 477 each year on March 1 (reporting data for the preceding December 31) and September 1 (reporting data for June 30 of the same year). Qualification status is determined separately for each state. If a carrier, or its holding company, has at least 10,000 local telephone connections in service in a state, it must file local telephone data for that state. An updated FCC Form 477, and instructions for that particular form, for each specific round of the data collection may be downloaded from the FCC Forms website at www.fcc.gov/formpage.html. We note that the Commission recently issued an Order that eliminated reporting thresholds. See *Local Telephone Competition and Broadband Reporting*, WC Docket No. 04-141, Report and Order, FCC 04-266 (rel. Nov. 12, 2004). Accordingly, beginning in September, 2005, data reported pursuant to Form 477 will not include thresholds.

² Statistical summaries of the earlier Form 477 data collections appeared in previous releases of the *Local Telephone Competition* report, available at www.fcc.gov/wcb/iatd/comp.html.

³ Total numbers reported by incumbent local exchange carriers (ILECs) filing FCC Form 477 may be slightly understated because smaller carriers are not required to report data. However, as the reporting ILECs account for about 98% of all ILEC lines, the understatement should not be large. (All ILECs, whether or not they normally report to the FCC, provide data on the number of telephone lines served to the National Exchange Carrier Association for use in conjunction with the Commission's universal service mechanism.) We are less certain about the extent to which comparable lines as reported by CLECs are understated as a result of the state-specific reporting threshold, but we expect such understatement to be larger, on a percentage basis, than for ILECs.

⁴ In the local telephone section of FCC Form 477, the switched access lines in service to the carrier's own end-user customers that are reported to be "used for residential and small business service" should be those lines that connect (continued....)

Table 2.

- CLECs reported providing about 23% of switched access lines over their own local loop facilities.⁵ To serve the remainder, CLECs resold the services of other carriers or used unbundled network element (UNE) loops that they leased from other carriers.⁶ See Table 3.
- Since December 1999, the percentage of nationwide CLEC switched access lines reported to be provisioned by reselling services has declined steadily, to 16% at the end of June 2004, and the percentage provisioned over UNE loops has grown, to 61%. See Table 3 and, for data reported for individual states, see Table 10.
- ILECs reported providing about 1.6 million switched access lines to unaffiliated carriers on a resale basis at the end of June 2004, down from 1.8 million six months earlier. They reported providing 21.4 million unbundled loops (with or without unbundled switching) to unaffiliated carriers, up from 19.4 million six months earlier.⁷ See Table 4.
- ILECs reported providing about 13% more UNE loops with switching (referred to as the UNE-Platform) to unaffiliated carriers at the end of June 2004 than they reported six months earlier (17.1 million compared to 15.2 million) and about 1% more UNE loops without switching (about 4.3 million).

(Continued from previous page) _____

to customer locations for which the reporting carrier bills fewer than four (4) voice-grade equivalent lines used for local exchange service. If this information is not available, the carrier may use tariffs or marketing information to report an estimate that it reasonably expects to be accurate within plus or minus five percentage points of the true number.

⁵ A reporting carrier should own the “last mile” of wire, cable, or optical fiber that connects to the end-user premises (or have obtained radio spectrum for the equivalent fixed wireless facility) if it reports providing the local telephone line over its own facilities. In general, local exchange and exchange access lines provisioned over facilities (other than dark fiber) and services obtained from another carrier are not the reporting carrier’s “own facilities” for purposes of FCC Form 477, irrespective of whether those facilities or services are obtained under interconnection arrangements, under tariff, or by other means. In particular, owning the switch that provides dialtone (and other services) over a UNE loop leased from another carrier does not qualify a line as being provisioned over the reporting carrier’s own facilities.

⁶ From CLECs, FCC Form 477 collects information on the percentage of the CLEC’s switched access lines provided over “UNE loops.” For purposes of FCC Form 477, this term includes UNE loops leased from an unaffiliated carrier on a stand-alone basis and also UNE loops leased in combination with UNE switching or any other unbundled network element.

⁷ The reported number of UNE loops provided without ILEC switching in Table 4 includes some UNE loops that ILECs supply to DSL-service providers that do not also provide local telephone service. Because no local telephone service is provided by means of such UNE loops, they are not included in the end-user local telephone lines reported by CLECs.

- Local telephone service by CLECs was provided over 3.3 million coaxial cable connections at the end of June 2004. These lines represent about 45% of the 7.5 million switched access lines that CLECs reported providing over their own local loop facilities, about 10% of all switched access lines that CLECs reported, and about 2% of total switched access lines. See Table 5.
- The Commission’s data collection program collates information about CLEC local telephone service lines (and the CLEC share of total local telephone service lines) in individual states. Relatively large numbers of CLEC lines are associated with the more populous states.⁸ With respect to the calculated CLEC share of switched access lines in service, however, some less populous states, such as Nebraska, New Hampshire, Rhode Island, and Utah had larger CLEC shares than some more populous states, such as California, Florida, and Ohio, as of June 2004. See Tables 6 - 9.⁹
- The percentage of CLEC switched access lines reported to serve residential and small business customers varies among the states, and is most frequently lower than the corresponding ILEC percentage. See Table 11.
- At least one CLEC reported switched access lines in service in all 50 states, the District of Columbia, and Puerto Rico.¹⁰ In 29 states, ten or more CLECs reported serving local telephone service customers. See Table 12.
- The 85 providers of mobile wireless telephone services that reported information served about 167.3 million subscribers at the end of June 2004.¹¹ About 7% of these subscribers received their service via a reseller of mobile wireless telephone service. See Table 13.
- The Commission’s data collection program requires CLECs and ILECs to identify each zip code in which the carrier provides local telephone service to at least one end-user customer.¹²

⁸ The largest numbers of CLEC lines are reported for California, the most populous state, followed by New York and Texas, the third and second most populous states, respectively.

⁹ CLEC shares appearing in Table 7 are based on CLEC and ILEC lines in Tables 8 and 9.

¹⁰ Under section 3(40) of the Communications Act, the term *state* “includes the District of Columbia and the Territories and possessions.” 47 U.S.C. §153(40). We note that carriers that have fewer than 10,000 local telephone lines in service in a state are not required to report those lines on FCC Form 477, but may file the data on a voluntary basis. There were 37 voluntary ILEC filings and 52 voluntary CLEC filings of state-specific data as of June 30, 2004. In the course of our ten data collections to date, the number of voluntary ILEC filings has varied between 7 and 37, and the number of voluntary CLEC filings has varied between 13 and 53.

¹¹ Facilities-based providers with fewer than 10,000 mobile wireless telephone service subscribers in a state (measured by revenue-generating handsets in service) are not required to report. A facilities-based mobile wireless telephone service provider serves subscribers using spectrum licenses that it has obtained or manages.

¹² CLECs and ILECs are required to report, for states in which they have at least 10,000 local telephone lines in service, lists of zip codes where they have subscribers. Providers of mobile wireless telephone service do not report zip codes.

As of June 30, 2004, at least one CLEC was serving customers in 79% of the nation's zip codes. About 97% of United States households resided in these zip codes. Moreover, multiple carriers reported providing local telephone service in the major population centers of the country. See Table 14, Table 15, and the map that follows Table 16.

- In Florida, Massachusetts, New Jersey, New York and Texas at least 40% of zip codes had ten or more reporting CLECs. By contrast, 14% of nationwide zip codes had ten or more reporting CLECs. See Table 16.

As other information from FCC Form 477 becomes available, it will be routinely posted on the Commission's Internet site. We invite users of the information presented in this statistical summary to provide suggestions for improved data collection and analysis by:

- Using the attached customer response form,
- E-mailing comments to James.Eisner@fcc.gov,
- Calling the Industry Analysis and Technology Division of the Wireline Competition Bureau at (202) 418-0940, or
- Participating in any formal proceedings undertaken by the Commission to solicit comments for improvement of FCC Form 477.

Table 1
End-User Switched Access Lines Reported

Date	ILEC Lines	CLEC Lines	Total	CLEC Share
December 1999	181,307,695	8,194,243	189,501,938	4.3 %
June 2000	179,761,930	11,557,381	191,319,311	6.0
December 2000	177,641,529	14,871,409	192,512,938	7.7
June 2001	174,861,248	17,274,727	192,135,975	9.0
December 2001	172,043,582	19,653,441	191,697,023	10.3
June 2002	167,472,318	21,644,928	189,117,246	11.4
December 2002	164,526,149	24,863,691	189,389,840	13.1
June 2003	158,386,821	26,985,345	185,372,166	14.6
December 2003	153,266,932	29,775,438	183,042,370	16.3
June 2004	148,103,506	31,983,229	180,086,735	17.8

Note: Some previously filed data have been revised.

Chart 1
End-User Switched Access Lines Reported
(Lines in Millions)

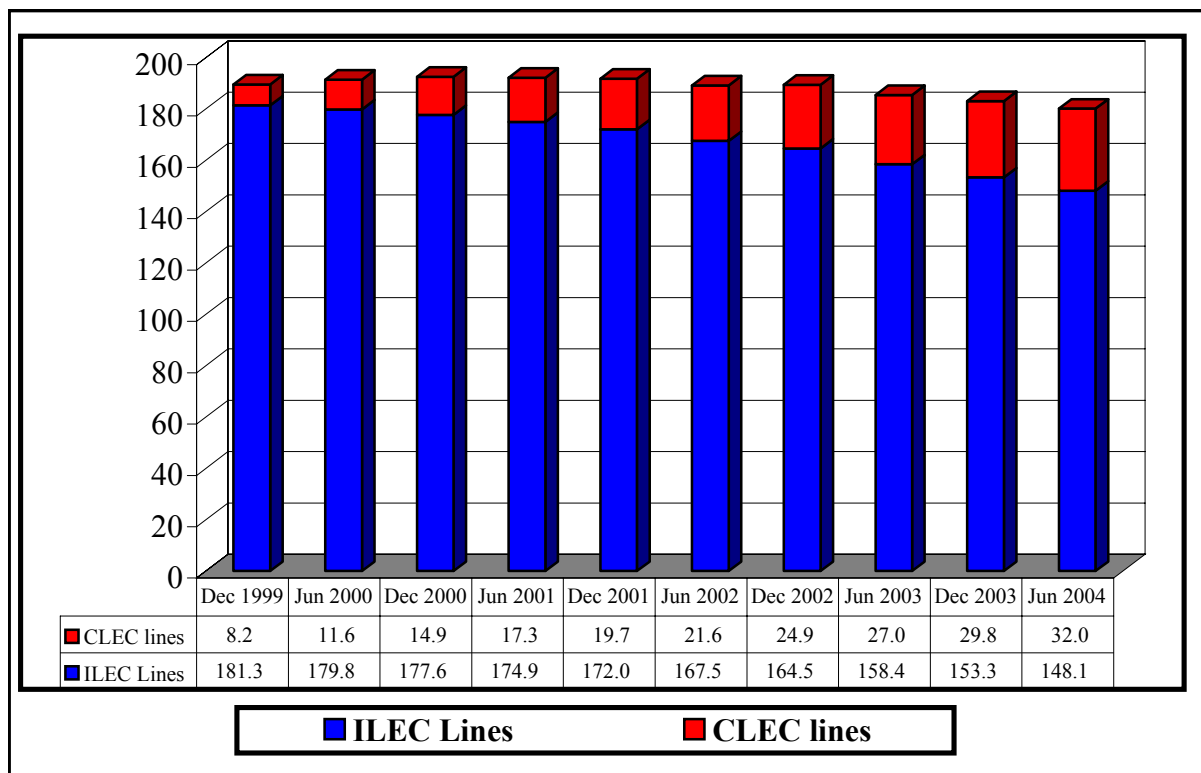


Table 2
End-User Switched Access Lines by Customer Type

Date	Reporting ILECs			Reporting CLECs		
	Residential & Small Business	Other ¹	% Residential & Small Business	Residential & Small Business	Other ¹	% Residential & Small Business
December 1999	139,758,434	41,549,261	77.1 %	3,368,702	4,825,541	41.1 %
June 2000	140,635,199	39,126,731	78.2	4,579,501	6,977,880	39.6
December 2000	138,872,415	38,769,114	78.2	6,620,471	8,250,938	44.5
June 2001	134,618,062	40,243,186	77.0	7,793,071	9,481,656	45.1
December 2001	133,421,570	38,622,012	77.6	9,489,049	10,164,392	48.3
June 2002	131,051,178	36,421,140	78.3	11,080,676	10,564,252	51.2
December 2002	127,606,456	36,919,693	77.6	14,608,495	10,255,196	58.8
June 2003	122,663,356	35,723,465	77.4	16,770,561	10,214,784	62.1
December 2003	118,746,138	34,520,794	77.5	18,702,229	11,073,209	62.8
June 2004	114,621,599	33,481,907	77.4	20,824,618	11,158,611	65.1

Note: Some previously filed data have been revised.

¹ Medium and large business, institutional, and government customers.

Chart 2
Percent of Lines that Serve Residential and Small Business Customers

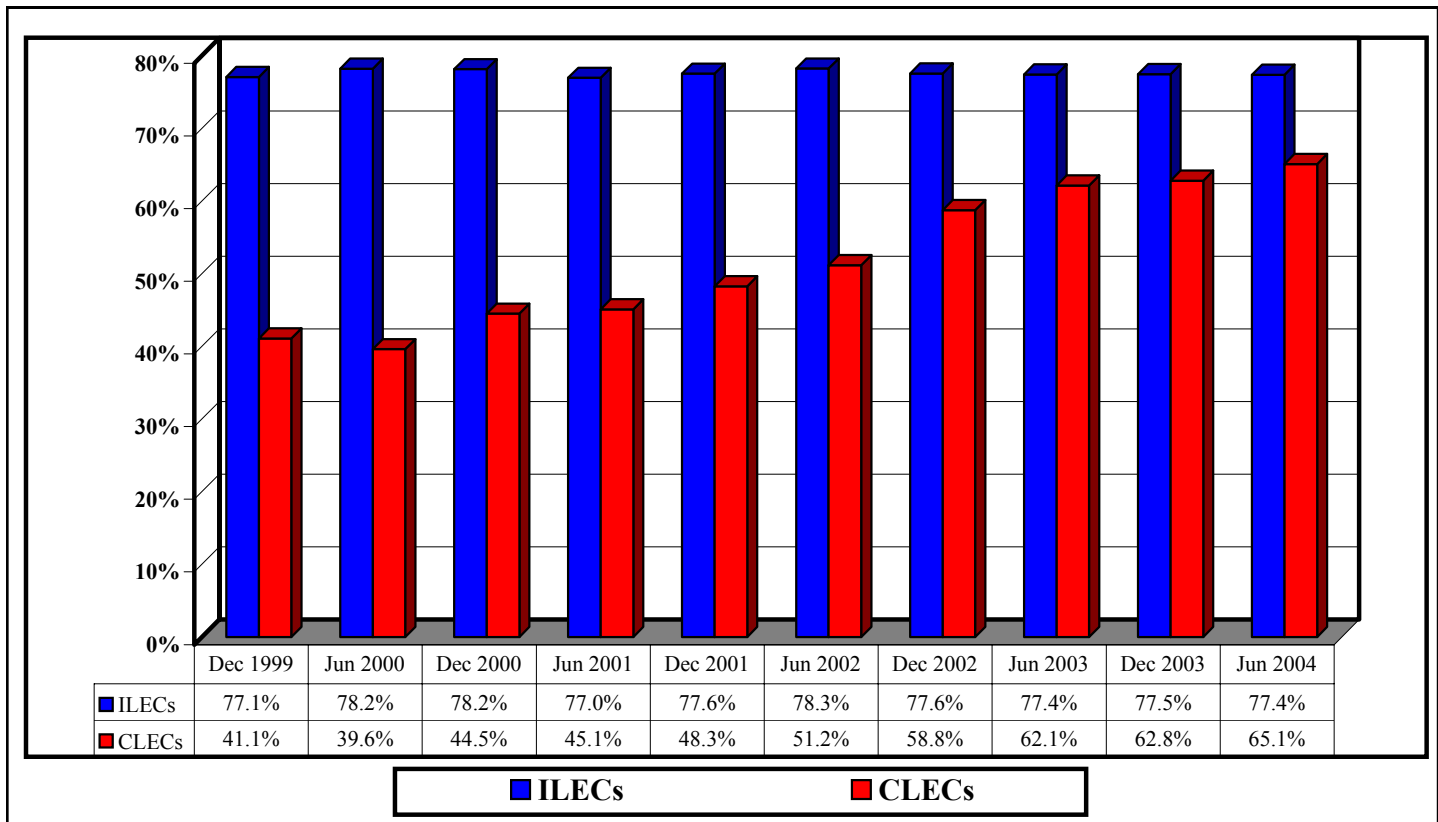


Table 3
Reporting Competitive Local Exchange Carriers
(End-User Switched Access Lines in Thousands)

Date	CLECs Reporting	Total End-User Lines	Acquired From Other Carriers				CLEC-Owned	
			Resold Lines	Percent	UNEs ¹	Percent	Lines ²	Percent
Dec 1999	81	8,194	3,513	42.9 %	1,959	23.9	2,723	33.2 %
Jun 2000	78	11,557	4,315	37.3	3,201	27.7	4,042	35.0
Dec 2000	89	14,871	4,114	27.7	5,540	37.3	5,217	35.1
Jun 2001	91	17,275	3,919	22.7	7,580	43.9	5,776	33.4
Dec 2001	94	19,653	4,250	21.6	9,332	47.5	6,072	30.9
Jun 2002	96	21,645	4,478	20.7	10,930	50.5	6,236	28.8
Dec 2002	112	24,864	4,677	18.8	13,709	55.1	6,479	26.1
Jun 2003	125	26,985	4,887	18.1	15,728	58.3	6,370	23.6
Dec 2003	136	29,775	4,842	16.3	17,888	60.1	7,045	23.7
Jun 2004	136	31,983	5,140	16.1	19,356	60.5	7,487	23.4

Notes: Some previously filed data have been revised. Figures may not add to totals due to rounding.

¹ Includes unbundled network element (UNE) loops leased from an unaffiliated carrier on a stand-alone basis and also UNE loops leased in combination with UNE switching or any other unbundled network element.

² Lines provided over CLEC-owned "last-mile" facilities.

Chart 3
Competitive Local Exchange Carriers' End-User Lines

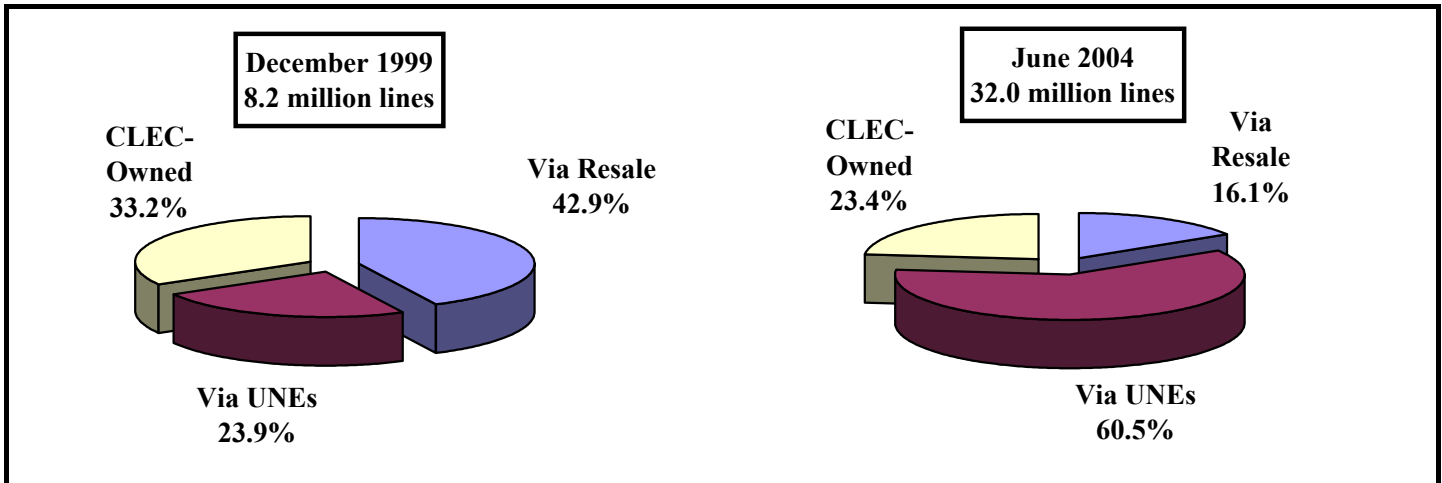


Table 4
Reporting Incumbent Local Exchange Carriers
(End-User Switched Access Lines in Thousands)

Date ¹	ILECs Reporting	Total Lines	End-User Lines	Provided to Other Carriers					
				Resold Lines	UNEs			Total UNEs and Resold Lines	Percent of Total Lines
					Without Switching	With Switching	Total UNEs		
Dec 1997	9	159,008	157,132	1,743			133	1,876	1.2 %
Jun 1998	8	161,810	159,118	2,448			244	2,692	1.7
Dec 1998	7	164,614	161,191	3,062			361	3,423	2.1
Jun 1999	7	167,177	162,909	3,583			685	4,268	2.6
Dec 1999	168	187,294	181,308	4,494	1,004	489	1,493	5,987	3.2
Jun 2000	159	188,171	179,762	5,098	1,696	1,616	3,312	8,409	4.5
Dec 2000	166	188,304	177,642	5,388	2,436	2,838	5,274	10,662	5.7
Jun 2001	156	187,201	174,861	4,417	3,161	4,761	7,922	12,340	6.6
Dec 2001	164	185,517	172,044	4,014	3,679	5,781	9,460	13,474	7.3
Jun 2002	166	182,487	167,472	3,475	4,061	7,478	11,540	15,015	8.2
Dec 2002	174	181,756	164,526	2,743	4,259	10,227	14,487	17,229	9.5
Jun 2003	181	177,860	158,387	2,232	4,205	13,036	17,241	19,473	10.9
Dec 2003	185	174,536	153,267	1,833	4,260	15,176	19,436	21,269	12.2
Jun 2004	185	171,129	148,104	1,600	4,290	17,136	21,426	23,026	13.5

Notes: Some previously filed data have been revised. Figures may not add to totals due to rounding.

¹ Data for December 1997 through June 1999 are from Common Carrier Bureau voluntary surveys. Starting with December 1999, data are from FCC Form 477 filings.

Chart 4
ILEC Lines and the Percent Provided to Other Carriers

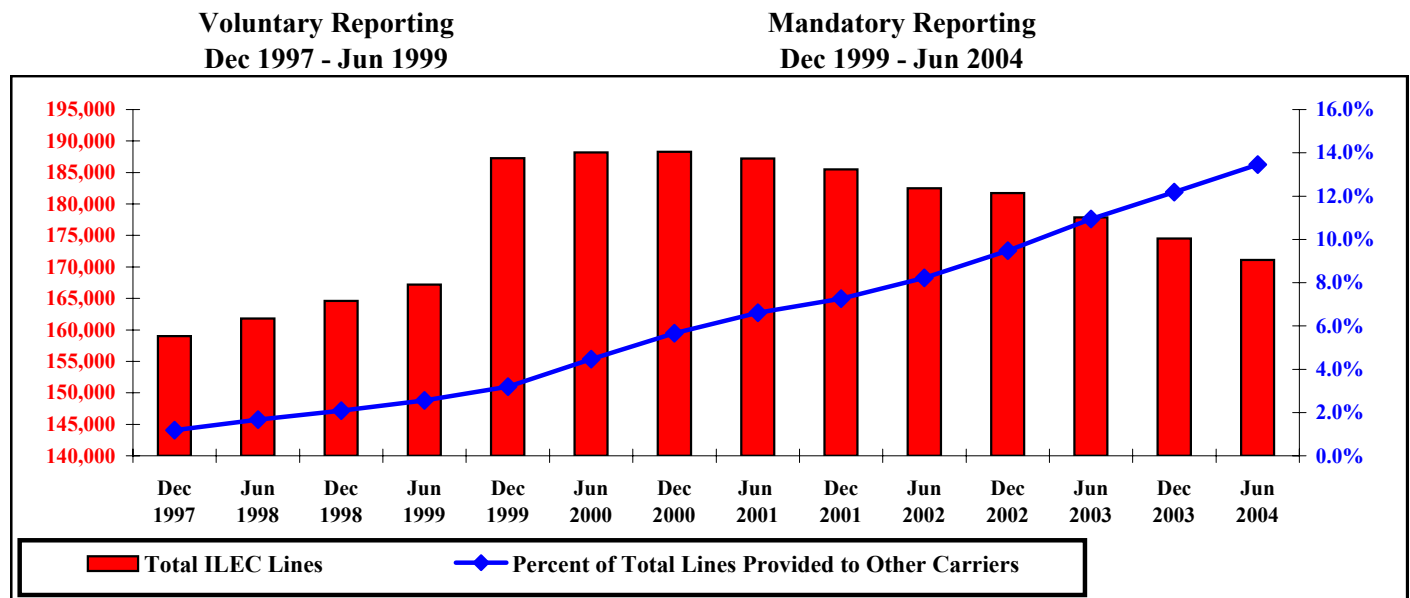


Table 5
Competitive Local Exchange Carrier Lines by Type of Technology
(End-User Switched Access Lines in Thousands)

	Coaxial Cable	Other Technologies	Total	Percent Coaxial Cable
December 2000	1,125	13,746	14,871	7.6 %
June 2001	1,876	15,399	17,275	10.9
December 2001	2,246	17,408	19,653	11.4
June 2002	2,597	19,048	21,645	12.0
December 2002	3,071	21,793	24,864	12.4
June 2003	3,123	23,863	26,985	11.6
December 2003	3,301	26,474	29,775	11.1
June 2004	3,338	28,645	31,983	10.4

Note: Some previously filed data have been revised.

Chart 5
Competitive Local Exchange Carrier Lines by Type of Technology
(End-User Switched Access Lines in Thousands)

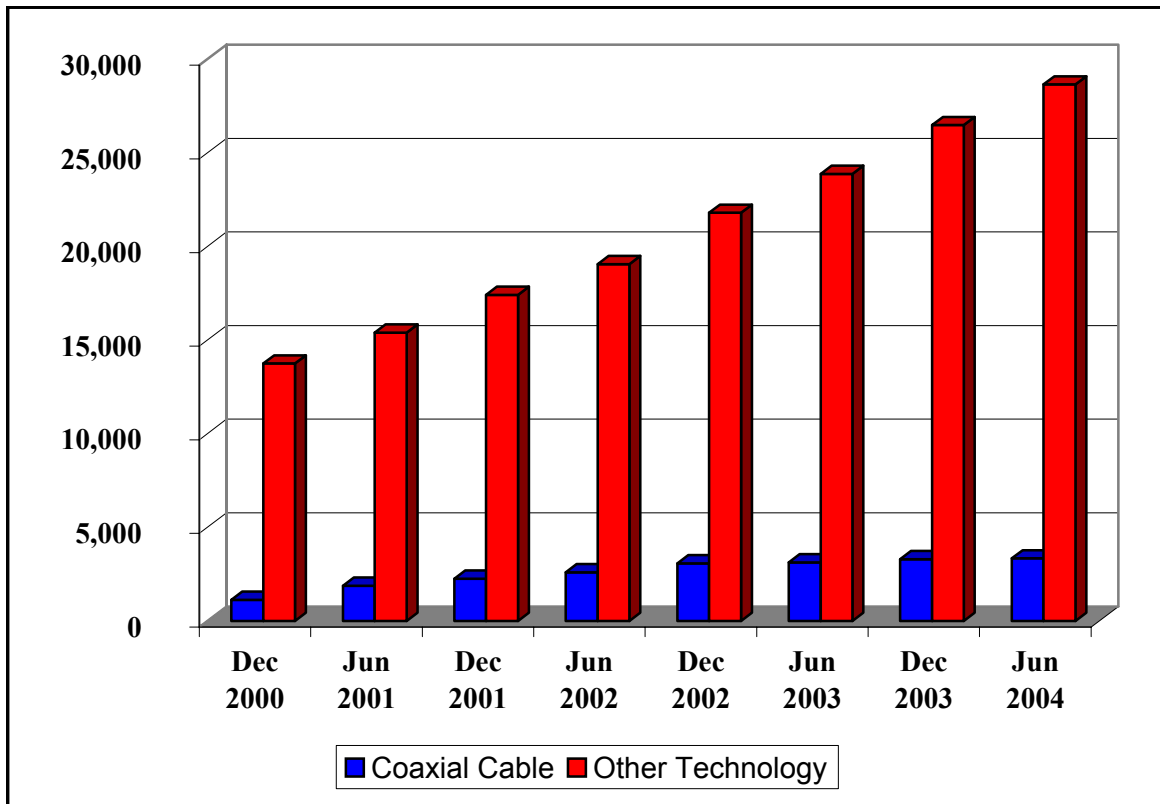


Table 6
End-User Switched Access Lines Served by Reporting Local Exchange Carriers
(As of June 30, 2004)

State	ILECs	CLECs	Total	CLEC Share
Alabama	1,997,058	365,060	2,362,118	15 %
Alaska	419,304	*	*	*
Arizona	2,415,432	814,194	3,229,626	25
Arkansas	1,172,200	162,996	1,335,196	12
California	19,478,761	3,723,815	23,202,576	16
Colorado	2,439,132	498,583	2,937,715	17
Connecticut	2,102,689	272,385	2,375,074	11
Delaware	497,466	92,810	590,276	16
District of Columbia	915,583	215,421	1,131,004	19
Florida	9,633,565	1,785,001	11,418,566	16
Georgia	4,044,935	977,358	5,022,293	19
Hawaii	683,146	*	*	*
Idaho	666,914	47,398	714,312	7
Illinois	6,326,988	1,672,522	7,999,510	21
Indiana	3,095,055	501,936	3,596,991	14
Iowa	1,232,364	199,115	1,431,479	14
Kansas	1,102,696	316,946	1,419,642	22
Kentucky	1,841,495	218,810	2,060,305	11
Louisiana	2,040,518	283,333	2,323,851	12
Maine	690,024	113,957	803,981	14
Maryland	3,239,029	615,757	3,854,786	16
Massachusetts	3,432,038	997,760	4,429,798	23
Michigan	4,487,619	1,575,267	6,062,886	26
Minnesota	2,377,827	604,152	2,981,979	20
Mississippi	1,148,580	131,218	1,279,798	10
Missouri	2,906,801	430,538	3,337,339	13
Montana	482,548	19,204	501,752	4
Nebraska	736,257	205,560	941,817	22
Nevada	1,272,060	149,735	1,421,795	11
New Hampshire	670,480	170,433	840,913	20
New Jersey	5,148,627	1,319,513	6,468,140	20
New Mexico	894,345	76,469	970,814	8
New York	8,685,767	3,684,036	12,369,803	30
North Carolina	4,440,280	576,538	5,016,818	11
North Dakota	265,881	22,502	288,383	8
Ohio	5,697,351	979,885	6,677,236	15
Oklahoma	1,591,936	242,737	1,834,673	13
Oregon	1,743,918	267,121	2,011,039	13
Pennsylvania	6,638,982	1,706,036	8,345,018	20
Puerto Rico	1,111,894	*	*	*
Rhode Island	448,853	213,787	662,640	32
South Carolina	2,025,422	226,284	2,251,706	10
South Dakota	271,682	*	*	*
Tennessee	2,818,771	475,312	3,294,083	14
Texas	10,139,446	2,320,273	12,459,719	19
Utah	940,678	288,009	1,228,687	23
Vermont	366,716	*	*	*
Virgin Islands	70,672	0	70,672	0
Virginia	4,075,297	994,588	5,069,885	20
Washington	3,276,000	494,375	3,770,375	13
West Virginia	912,228	*	*	*
Wisconsin	2,754,836	626,809	3,381,645	19
Wyoming	235,360	*	*	*
Nationwide	148,103,506	31,983,229	180,086,735	18 %

Note: Carriers with under 10,000 lines in a state were not required to report.

* Data withheld to maintain firm confidentiality

Table 7
Competitive Local Exchange Carrier Share of End-User Switched Access Lines

State	1999	2000		2001		2002		2003		2004
	Dec	Jun	Dec	Jun	Dec	Jun	Dec	Jun	Dec	Jun
Alabama	5 %	3 %	4 %	5 %	5 %	5 %	9 %	11 %	13 %	15 %
Alaska	*	*	*	*	*	*	*	*	*	*
Arizona	*	5	5	7	9	11	12	16	22	25
Arkansas	*	*	*	*	*	*	10	*	11	12
California	4	5	6	7	8	9	11	13	15	16
Colorado	5	7	9	10	13	14	15	16	17	17
Connecticut	3	5	6	7	7	9	9	10	10	11
Delaware	*	*	*	0	0	*	*	9	12	16
District of Columbia	7	7	9	12	13	16	14	16	17	19
Florida	6	6	6	7	7	9	13	13	14	16
Georgia	5	6	8	10	11	13	15	17	18	19
Hawaii	*	*	0	*	*	*	*	*	*	*
Idaho	0	0	*	*	*	*	*	5	6	7
Illinois	5	7	9	13	15	17	19	19	20	21
Indiana	3	4	5	5	5	7	8	9	13	14
Iowa	*	9	11	11	12	12	13	13	13	14
Kansas	*	5	7	8	9	12	17	21	21	22
Kentucky	2	*	3	*	*	*	4	5	8	11
Louisiana	3	2	3	4	4	5	7	9	10	12
Maine	*	*	*	*	*	*	*	8	10	14
Maryland	2	3	4	6	4	6	7	10	14	16
Massachusetts	6	8	11	12	15	16	16	18	21	23
Michigan	3	5	6	9	13	18	21	22	25	26
Minnesota	6	7	9	11	13	14	17	17	19	20
Mississippi	4	*	4	4	3	2	6	7	9	10
Missouri	3	5	6	6	7	8	10	10	11	13
Montana	*	*	*	*	*	*	*	3	4	4
Nebraska	*	*	*	*	12	16	18	20	21	22
Nevada	*	*	*	10	*	*	11	9	10	11
New Hampshire	*	*	6	8	10	13	14	16	17	20
New Jersey	*	4	5	4	5	6	10	15	19	20
New Mexico	*	*	*	*	*	*	*	*	*	8
New York	9	16	20	23	25	25	24	27	28	30
North Carolina	3	4	4	6	6	6	8	9	9	11
North Dakota	*	*	*	*	*	*	*	*	8	8
Ohio	4	4	4	4	5	7	9	11	14	15
Oklahoma	*	*	5	6	8	10	11	11	14	13
Oregon	2	3	4	5	7	7	9	8	12	13
Pennsylvania	5	8	10	13	14	15	16	17	19	20
Puerto Rico	0	*	*	*	*	*	*	*	*	*
Rhode Island	*	*	*	10	16	18	21	25	28	32
South Carolina	*	*	4	4	3	5	7	9	9	10
South Dakota	*	*	*	*	*	*	*	14	18	*
Tennessee	4	6	6	8	8	7	9	10	11	14
Texas	4	7	13	14	16	16	17	18	18	19
Utah	3	6	10	11	13	13	15	19	20	23
Vermont	*	*	*	*	*	*	*	*	*	*
Virgin Islands	0	0	0	0	0	0	0	0	0	0
Virginia	2	5	7	9	11	12	12	14	17	20
Washington	4	5	6	6	8	9	10	10	11	13
West Virginia	*	*	*	*	*	*	*	*	*	*
Wisconsin	5	7	8	9	11	12	13	15	18	19
Wyoming	*	*	*	*	*	*	*	*	*	*
Nationwide	4 %	6 %	8 %	9 %	10 %	11 %	13 %	15 %	16 %	18 %

Notes: Some previously filed data have been revised. Carriers with under 10,000 lines in a state were not required to report.

* Data withheld to maintain firm confidentiality.

Table 8
End-User Switched Access Lines Served by Reporting Competitive Local Exchange Carriers

State	1999	2000		2001		2002		2003		2004
	Dec	Jun	Dec	Jun	Dec	Jun	Dec	Jun	Dec	Jun
Alabama	131,357	78,525	104,933	121,059	117,159	118,721	215,962	265,556	302,911	365,060
Alaska	*	*	*	*	*	*	*	*	*	*
Arizona	*	155,657	165,597	231,777	310,517	354,592	400,080	519,128	707,477	814,194
Arkansas	*	*	*	*	*	*	144,411	*	146,513	162,996
California	1,027,200	1,317,414	1,498,146	1,668,232	2,003,404	2,158,878	2,705,851	3,046,959	3,422,373	3,723,815
Colorado	141,135	204,608	286,955	325,983	391,257	434,125	482,014	495,007	505,772	498,583
Connecticut	86,385	136,086	154,349	164,379	187,450	222,815	236,462	234,372	242,643	272,385
Delaware	*	*	*	0	0	*	*	53,473	71,230	92,810
District of Columbia	77,865	72,696	94,850	124,630	126,461	161,114	160,174	174,584	180,680	215,421
Florida	681,382	670,714	718,157	864,892	866,809	1,035,417	1,509,299	1,552,996	1,576,562	1,785,001
Georgia	254,672	327,881	462,392	515,730	600,087	704,651	807,935	861,156	913,567	977,358
Hawaii	*	*	0	*	*	*	*	*	*	*
Idaho	0	0	*	*	*	*	*	33,864	46,858	47,398
Illinois	443,936	590,208	803,492	1,113,112	1,341,060	1,468,057	1,602,482	1,616,765	1,662,007	1,672,522
Indiana	96,091	156,280	191,921	180,221	205,845	252,722	284,532	348,159	457,657	501,936
Iowa	*	140,706	164,069	164,637	186,254	190,869	201,176	195,860	188,645	199,115
Kansas	*	84,823	106,686	121,294	145,659	176,322	258,312	318,862	310,032	316,946
Kentucky	45,522	*	56,392	*	*	*	92,483	97,288	162,391	218,810
Louisiana	71,206	57,617	69,437	108,820	93,107	115,220	188,652	212,363	229,051	283,333
Maine	*	*	*	*	*	*	*	70,275	78,050	113,957
Maryland	79,173	131,272	160,126	211,499	158,999	232,793	285,416	379,961	555,282	615,757
Massachusetts	277,476	384,548	509,731	576,442	669,209	736,932	750,473	846,276	973,607	997,760
Michigan	208,980	349,703	366,305	583,653	865,182	1,211,379	1,362,217	1,384,973	1,547,619	1,575,267
Minnesota	202,675	230,789	287,660	353,245	394,310	443,739	572,708	534,965	581,234	604,152
Mississippi	57,914	*	63,515	51,496	43,578	22,966	74,410	93,912	111,657	131,218
Missouri	113,347	178,377	203,537	224,442	262,947	279,342	336,895	334,319	362,346	430,538
Montana	*	*	*	*	*	*	*	17,473	18,616	19,204
Nebraska	*	*	*	*	144,229	159,617	177,698	190,754	199,498	205,560
Nevada	*	*	*	144,453	*	*	163,520	132,684	150,615	149,735
New Hampshire	*	*	52,137	67,315	85,549	109,610	125,893	136,510	142,385	170,433
New Jersey	*	294,690	323,680	300,594	330,005	396,865	682,249	1,009,996	1,235,977	1,319,513
New Mexico	*	*	*	*	*	*	*	*	*	76,469
New York	1,191,446	2,157,618	2,769,814	3,138,133	3,353,394	3,259,221	3,190,192	3,478,918	3,596,739	3,684,036
North Carolina	166,473	187,253	230,733	323,594	302,044	328,715	405,853	443,600	476,299	576,538
North Dakota	*	*	*	*	*	*	*	*	25,039	22,502
Ohio	262,159	255,267	308,213	280,088	352,811	510,623	652,104	754,020	946,303	979,885
Oklahoma	*	*	102,456	125,912	160,186	203,028	207,798	217,854	270,313	242,737
Oregon	47,239	58,699	99,326	118,425	153,084	154,492	183,319	167,965	249,696	267,121
Pennsylvania	412,761	671,437	870,618	1,122,623	1,186,897	1,329,357	1,405,894	1,413,458	1,585,025	1,706,036
Puerto Rico	0	*	*	*	*	*	*	*	*	*
Rhode Island	*	*	*	69,237	108,190	119,112	145,202	167,714	187,936	213,787
South Carolina	*	*	89,255	90,241	72,035	121,331	171,572	204,252	218,095	226,284
South Dakota	*	*	*	*	*	*	*	49,243	64,784	*
Tennessee	129,987	200,721	222,917	272,211	268,222	247,056	329,150	349,588	380,298	475,312
Texas	586,111	998,326	1,764,676	1,891,131	2,166,033	2,170,914	2,182,929	2,266,028	2,265,505	2,320,273
Utah	34,351	79,034	129,834	145,603	155,992	161,193	194,352	235,170	241,454	288,009
Vermont	*	*	*	*	*	*	*	*	*	*
Virgin Islands	0	0	0	0	0	0	0	0	0	0
Virginia	88,431	228,271	336,826	402,528	537,753	558,206	639,330	738,479	873,022	994,588
Washington	138,449	184,353	240,514	229,693	336,230	358,933	406,750	386,104	433,967	494,375
West Virginia	*	*	*	*	*	*	*	*	*	*
Wisconsin	177,336	244,373	278,087	322,735	367,195	420,200	477,915	526,343	603,492	626,809
Wyoming	*	*	*	*	*	*	*	*	*	*
Total	8,194,243	11,557,381	14,871,409	17,274,727	19,653,441	21,644,928	24,863,691	26,985,345	29,775,438	31,983,229

Note: Some previously filed data have been revised. Carriers with under 10,000 lines in a state were not required to report.

* Data withheld to maintain firm confidentiality.

Table 9
End-User Switched Access Lines Served by Reporting Incumbent Local Exchange Carriers

State	1999	2000		2001		2002		2003		2004
	Dec	Jun	Dec	Jun	Dec	Jun	Dec	Jun	Dec	Jun
Alabama	2,360,023	2,456,101	2,424,197	2,413,440	2,381,574	2,330,940	2,238,352	2,183,237	2,046,244	1,997,058
Alaska	460,425	486,337	481,684	474,215	462,804	484,065	466,880	430,339	425,322	419,304
Arizona	3,006,276	3,051,648	3,073,779	3,062,586	2,981,156	2,947,967	2,878,210	2,700,186	2,541,931	2,415,432
Arkansas	1,396,981	1,422,736	1,420,169	1,412,863	1,363,454	1,304,659	1,257,291	1,220,542	1,212,895	1,172,200
California	23,198,657	23,436,793	23,250,580	23,103,077	22,771,976	22,315,423	21,475,881	20,645,363	20,111,818	19,478,761
Colorado	2,873,169	2,887,311	2,833,948	2,805,532	2,727,654	2,717,320	2,642,166	2,557,814	2,496,330	2,439,132
Connecticut	2,416,300	2,438,119	2,382,208	2,363,687	2,329,716	2,305,082	2,266,558	2,219,140	2,172,574	2,102,689
Delaware	581,714	570,331	555,913	567,381	552,331	537,498	562,577	546,684	525,331	497,466
District of Columbia	994,975	914,716	922,531	887,590	865,008	829,592	976,228	932,576	901,056	915,583
Florida	11,090,801	11,365,772	11,349,981	11,211,674	11,019,972	10,603,872	10,406,129	10,133,865	9,975,073	9,633,565
Georgia	4,869,774	5,032,360	4,988,949	4,905,002	4,723,842	4,604,834	4,423,324	4,308,760	4,187,544	4,044,935
Hawaii	736,080	737,255	744,205	739,979	735,459	729,239	723,111	707,634	698,178	683,146
Idaho	709,210	724,440	733,580	732,814	706,991	707,180	700,089	687,342	678,088	666,914
Illinois	8,040,394	7,990,635	7,875,563	7,558,613	7,578,706	7,322,494	6,994,127	6,741,172	6,517,977	6,326,988
Indiana	3,559,946	3,597,365	3,574,414	3,576,710	3,637,893	3,542,715	3,459,873	3,327,235	3,188,863	3,095,055
Iowa	1,439,574	1,414,622	1,387,746	1,379,872	1,356,643	1,357,155	1,329,633	1,296,148	1,285,764	1,232,364
Kansas	1,543,799	1,533,755	1,498,636	1,441,940	1,397,937	1,324,804	1,236,051	1,186,953	1,149,527	1,102,696
Kentucky	2,126,249	2,173,716	2,166,664	2,170,191	2,173,958	2,141,611	2,100,313	2,024,894	1,910,272	1,841,495
Louisiana	2,423,524	2,515,485	2,506,348	2,505,961	2,440,988	2,428,935	2,353,620	2,251,091	2,146,036	2,040,518
Maine	822,990	818,979	804,652	801,649	764,536	768,216	797,973	775,378	737,751	690,024
Maryland	3,932,708	3,760,409	3,802,622	3,599,027	3,660,869	3,488,961	3,634,524	3,541,493	3,369,687	3,239,029
Massachusetts	4,580,383	4,313,988	4,252,502	4,131,520	3,931,469	3,804,513	3,914,218	3,771,142	3,565,171	3,432,038
Michigan	6,287,424	6,363,024	6,262,696	6,027,730	5,965,971	5,498,139	5,174,471	4,819,294	4,614,333	4,487,619
Minnesota	2,926,177	2,935,154	2,940,034	2,861,684	2,698,867	2,804,937	2,708,221	2,572,413	2,453,860	2,377,827
Mississippi	1,288,847	1,355,932	1,352,284	1,356,136	1,332,389	1,332,853	1,277,168	1,235,339	1,186,725	1,148,580
Missouri	3,464,118	3,508,475	3,418,983	3,446,252	3,328,130	3,262,072	3,145,872	3,067,732	2,997,347	2,906,801
Montana	530,884	514,992	529,878	527,989	521,550	514,353	509,979	500,865	490,505	482,548
Nebraska	946,718	1,010,682	949,217	931,979	1,030,125	867,474	828,394	775,829	736,105	736,257
Nevada	1,331,122	1,341,786	1,353,193	1,366,124	1,352,724	1,351,282	1,348,042	1,304,641	1,301,193	1,272,060
New Hampshire	861,976	813,919	805,143	775,864	758,515	741,553	743,300	723,408	703,594	670,480
New Jersey	6,867,616	6,705,441	6,747,131	6,707,243	6,482,459	6,226,079	6,200,678	5,766,555	5,425,840	5,148,627
New Mexico	940,489	947,809	957,195	977,439	965,946	969,763	965,816	940,232	919,450	894,345
New York	12,675,692	11,532,265	10,952,903	10,689,293	10,223,476	9,806,596	10,037,200	9,588,446	9,115,865	8,685,767
North Carolina	4,922,110	5,136,006	5,133,984	5,040,317	5,023,740	4,942,113	4,824,385	4,682,253	4,630,912	4,440,280
North Dakota	357,062	354,945	317,270	312,573	306,963	303,326	293,639	280,507	275,457	265,881
Ohio	6,904,938	6,944,806	6,922,773	6,876,434	6,967,603	6,705,911	6,405,570	6,131,768	5,889,260	5,697,351
Oklahoma	2,008,819	1,983,894	1,950,618	1,923,027	1,873,489	1,822,278	1,726,359	1,679,984	1,638,861	1,591,936
Oregon	2,104,982	2,119,998	2,109,510	2,079,221	2,043,164	2,005,347	1,955,544	1,871,970	1,813,627	1,743,918
Pennsylvania	8,474,914	8,200,347	8,012,115	7,818,599	7,524,072	7,288,959	7,394,441	7,146,626	6,922,904	6,638,982
Puerto Rico	1,294,962	1,288,076	1,299,291	1,300,665	1,288,439	1,288,718	1,276,493	1,212,779	1,178,707	1,111,894
Rhode Island	676,212	639,438	627,784	604,128	570,513	547,728	542,069	509,749	482,392	448,853
South Carolina	2,222,641	2,234,165	2,314,649	2,239,383	2,276,681	2,253,384	2,210,548	2,143,712	2,100,205	2,025,422
South Dakota	353,816	353,073	309,349	338,834	327,150	314,755	309,173	296,879	297,540	271,682
Tennessee	3,322,220	3,419,317	3,412,145	3,352,224	3,289,154	3,232,548	3,147,556	3,042,739	2,943,127	2,818,771
Texas	12,601,936	12,349,899	11,892,768	11,496,247	11,365,441	11,006,831	10,766,127	10,451,045	10,269,558	10,139,446
Utah	1,197,043	1,207,581	1,174,625	1,149,667	1,086,537	1,090,791	1,075,061	1,019,089	993,796	940,678
Vermont	404,836	377,987	400,929	399,084	388,399	383,917	395,441	385,901	376,390	366,716
Virgin Islands	66,701	69,063	0	70,426	70,784	71,984	71,894	71,132	71,284	70,672
Virginia	4,853,301	4,184,850	4,317,626	4,203,412	4,436,193	4,276,468	4,512,398	4,366,897	4,192,316	4,075,297
Washington	3,811,920	3,837,744	3,784,183	3,751,683	3,635,702	3,622,857	3,553,994	3,452,669	3,375,160	3,276,000
West Virginia	1,004,031	910,992	927,432	980,575	967,218	940,483	974,090	962,417	954,583	912,228
Wisconsin	3,184,664	3,239,809	3,178,516	3,151,854	3,121,462	3,145,341	3,063,426	2,953,647	2,834,559	2,754,836
Wyoming	255,572	237,588	256,434	259,839	255,790	256,403	251,672	241,316	238,045	235,360
Total	181,307,695	179,761,930	177,641,529	174,861,248	172,043,582	167,472,318	164,526,149	158,386,821	153,266,932	148,103,506

Note: Some previously filed data have been revised. Carriers with under 10,000 lines in a state were not required to report.

Table 10
CLEC-Reported End-User Switched Access Lines by State
(As of June 30, 2004)

State	CLEC- Owned	UNEs	Resold Lines	Total
Alabama	75,687	207,436	81,937	365,060
Alaska	*	*	*	*
Arizona	409,317	267,651	137,225	814,194
Arkansas	45,528	109,809	7,659	162,996
California	1,042,458	2,097,112	584,245	3,723,815
Colorado	155,155	233,794	109,635	498,583
Connecticut	111,173	92,653	68,560	272,385
Delaware	*	51,635	*	92,810
District of Columbia	72,478	81,820	61,123	215,421
Florida	367,481	802,859	614,661	1,785,001
Georgia	182,001	642,173	153,185	977,358
Hawaii	*	*	*	*
Idaho	*	26,147	*	47,398
Illinois	400,253	1,120,585	151,684	1,672,522
Indiana	90,730	357,102	54,104	501,936
Iowa	39,925	144,184	15,006	199,115
Kansas	76,491	215,460	24,994	316,946
Kentucky	83,002	112,320	23,488	218,810
Louisiana	92,830	156,050	34,454	283,333
Maine	19,561	62,679	31,717	113,957
Maryland	115,598	390,141	110,018	615,757
Massachusetts	389,855	416,161	191,744	997,760
Michigan	106,307	1,387,936	81,024	1,575,267
Minnesota	168,751	309,925	125,476	604,152
Mississippi	5,180	97,730	28,308	131,218
Missouri	55,185	321,525	53,828	430,538
Montana	14,791	*	*	19,204
Nebraska	134,835	42,773	27,952	205,560
Nevada	29,872	65,676	54,186	149,735
New Hampshire	65,182	81,302	23,949	170,433
New Jersey	105,458	987,393	226,662	1,319,513
New Mexico	14,600	47,372	14,497	76,469
New York	418,398	2,554,413	711,226	3,684,036
North Carolina	101,286	334,410	140,842	576,538
North Dakota	7,623	*	*	22,502
Ohio	108,441	759,213	112,231	979,885
Oklahoma	138,068	80,649	24,020	242,737
Oregon	34,898	190,756	41,467	267,121
Pennsylvania	573,167	898,723	234,147	1,706,036
Puerto Rico	*	*	*	*
Rhode Island	130,671	70,927	12,189	213,787
South Carolina	28,239	132,739	65,307	226,284
South Dakota	*	*	*	*
Tennessee	94,384	315,897	65,031	475,312
Texas	461,568	1,595,937	262,767	2,320,273
Utah	67,833	141,230	78,946	288,009
Vermont	*	*	*	*
Virgin Islands	0	0	0	0
Virginia	491,614	414,937	88,038	994,588
Washington	148,870	256,327	89,178	494,375
West Virginia	*	*	*	*
Wisconsin	57,631	514,907	54,271	626,809
Wyoming	*	*	*	*
Total	7,487,198	19,356,399	5,139,632	31,983,229

* Data withheld to maintain firm confidentiality.

Table 11
Percentage of Lines Provided to
Residential and Small Business Customers
(As of June 30, 2004)

State	ILECs	CLECs	Total
Alabama	83 %	59 %	80 %
Alaska	80	*	*
Arizona	74	69	73
Arkansas	88	60	85
California	82	70	80
Colorado	77	59	74
Connecticut	87	58	84
Delaware	67	76	68
District of Columbia	26	28	26
Florida	83	47	77
Georgia	78	62	75
Hawaii	83	*	*
Idaho	77	78	77
Illinois	72	73	72
Indiana	76	65	75
Iowa	76	88	78
Kansas	87	62	81
Kentucky	81	77	81
Louisiana	81	71	80
Maine	79	78	79
Maryland	64	69	65
Massachusetts	68	64	67
Michigan	73	77	74
Minnesota	78	64	75
Mississippi	82	78	82
Missouri	87	71	85
Montana	80	75	79
Nebraska	69	69	69
Nevada	75	36	71
New Hampshire	79	65	76
New Jersey	66	67	66
New Mexico	79	53	77
New York	68	68	68
North Carolina	81	52	78
North Dakota	81	93	82
Ohio	77	66	75
Oklahoma	87	68	85
Oregon	82	71	80
Pennsylvania	76	52	71
Puerto Rico	90	*	*
Rhode Island	72	79	74
South Carolina	83	59	80
South Dakota	75	*	*
Tennessee	84	55	80
Texas	85	65	82
Utah	76	63	73
Vermont	72	*	*
Virgin Islands	99	NA	99
Virginia	62	77	65
Washington	79	58	76
West Virginia	79	*	*
Wisconsin	78	61	75
Wyoming	74	*	*
Nationwide	77 %	65 %	75 %

NA -- Not Applicable.

* Data withheld to maintain firm confidentiality.

Table 12
Number of Reporting Local Exchange Carriers
(As of June 30, 2004)

State	ILECs	CLECs	Total
Alabama	9	10	19
Alaska	5	1	6
Arizona	3	13	16
Arkansas	4	5	9
California	8	27	35
Colorado	3	13	16
Connecticut	2	9	11
Delaware	1	4	5
District of Columbia	1	8	9
Florida	8	28	36
Georgia	15	23	38
Hawaii	1	1	2
Idaho	5	5	10
Illinois	6	20	26
Indiana	7	13	20
Iowa	10	11	21
Kansas	6	12	18
Kentucky	10	12	22
Louisiana	5	10	15
Maine	5	5	10
Maryland	2	15	17
Massachusetts	1	15	16
Michigan	7	17	24
Minnesota	20	18	38
Mississippi	6	8	14
Missouri	6	13	19
Montana	7	4	11
Nebraska	6	6	12
Nevada	7	6	13
New Hampshire	4	7	11
New Jersey	2	19	21
New Mexico	4	4	8
New York	7	30	37
North Carolina	16	17	33
North Dakota	9	4	13
Ohio	9	21	30
Oklahoma	11	6	17
Oregon	8	11	19
Pennsylvania	9	24	33
Puerto Rico	1	1	2
Rhode Island	1	5	6
South Carolina	14	15	29
South Dakota	8	3	11
Tennessee	14	15	29
Texas	14	28	42
Utah	6	9	15
Vermont	4	1	5
Virgin Islands	1	0	1
Virginia	5	19	24
Washington	7	14	21
West Virginia	2	2	4
Wisconsin	11	11	22
Wyoming	2	3	5
Nationwide - Unduplicated	185	136	321
Total State Filings ¹	345	601	946
Required Filings ¹	308	549	857
Voluntary Filings ¹	37	52	89

¹ Each report represents all of a company's operations in a given state. Carriers with both ILEC and CLEC operations in the same state provide separate reports

Table 13
Mobile Wireless Telephone Subscribers¹

State	June 2004		Subscribers										Percent Change Jun 03 - Jun 04
	Carriers ¹	Percent Resold ²	1999	2000		2001		2002		2003		2004	
			Dec	Jun	Dec	Jun	Dec	Jun	Dec	Jun	Dec	Jun	
Alabama	10	8 %	1,080,410	1,253,084	1,386,294	1,930,631	1,979,075	2,027,845	1,987,254	2,100,557	2,242,108	2,301,847	10 %
Alaska	4	5	165,221	169,892	*	218,424	240,216	242,133	267,630	*	303,184	307,323	NA
American Samoa	*	*	0	0	0	0	0	0	0	0	0	0	NA
Arizona	14	6	1,125,321	1,624,668	1,855,115	2,018,410	2,171,021	2,412,998	2,520,058	2,643,952	2,843,061	3,079,657	16
Arkansas	7	5	719,919	715,467	743,928	891,275	970,127	1,130,302	1,156,345	1,351,291	1,296,901	1,376,564	2
California	15	6	8,544,941	12,283,369	12,710,520	14,184,625	15,052,203	16,007,376	17,575,105	18,892,619	20,360,454	21,575,797	14
Colorado	10	4	1,552,718	1,654,989	1,856,075	1,983,405	2,145,816	2,247,166	2,358,748	2,426,929	2,554,731	2,727,910	12
Connecticut	6	4	1,077,089	1,136,618	1,277,123	1,418,367	1,639,914	1,577,873	1,694,110	1,791,944	1,928,988	2,064,204	15
Delaware	6	5	270,848	275,219	371,014	389,284	412,611	433,059	438,196	503,353	543,526	593,452	18
Dist. of Columbia	6	9	346,681	333,815	354,735	382,457	404,489	415,399	472,832	520,182	513,102	555,958	7
Florida	12	15	5,158,079	4,983,478	6,369,985	7,536,670	8,937,063	8,607,715	9,482,349	10,252,348	10,855,430	11,916,615	16
Georgia	12	7	2,538,983	2,687,238	2,754,784	4,076,119	4,149,717	4,300,831	4,497,576	4,709,288	4,940,091	5,332,517	13
Guam	*	*	*	*	0	*	*	*	*	*	*	*	NA
Hawaii	5	1	288,425	454,364	524,291	543,283	595,721	640,247	689,857	732,262	771,023	819,262	12
Idaho	10	11	271,436	296,066	344,564	398,781	444,864	500,693	536,064	572,406	605,488	653,779	14
Illinois	10	6	3,922,482	4,309,660	5,143,767	5,621,044	5,631,172	5,409,370	6,476,683	6,834,217	7,183,989	7,529,966	10
Indiana	8	10	1,318,975	1,717,378	1,715,074	1,781,247	1,921,356	2,032,290	2,390,567	2,456,509	2,642,810	2,844,568	16
Iowa	11	9	774,773	975,629	832,106	861,382	1,087,608	1,157,580	1,239,384	1,250,305	1,342,931	1,445,711	16
Kansas	12	4	669,472	724,024	801,293	901,225	956,050	1,061,171	1,117,277	1,195,230	1,261,242	1,345,160	13
Kentucky	11	9	911,700	999,544	1,026,334	1,176,756	1,405,043	1,505,982	1,456,705	1,595,290	1,812,657	2,000,459	25
Louisiana	10	11	1,227,106	1,294,693	1,306,457	1,677,292	1,920,740	2,187,811	2,190,613	2,365,224	2,470,146	2,547,153	8
Maine	6	1	187,003	283,640	359,786	399,616	427,313	457,835	466,896	524,246	568,159	610,533	16
Maryland	8	5	1,634,625	2,013,058	2,298,651	2,446,818	2,614,216	2,684,441	2,913,943	3,108,086	3,319,605	3,575,747	15
Massachusetts	6	4	1,892,014	2,228,169	2,649,130	2,753,685	2,996,816	3,289,934	3,375,726	3,506,039	3,741,975	3,919,139	12
Michigan	13	8	3,512,813	3,423,535	3,551,719	4,071,091	4,238,399	4,758,538	4,674,980	4,889,269	5,114,259	5,430,637	11
Minnesota	12	10	1,550,411	1,595,560	1,851,430	2,014,317	2,153,857	2,254,895	2,415,033	2,564,783	2,677,472	2,823,079	10
Mississippi	9	12	673,355	509,038	786,577	993,781	1,048,061	1,106,700	1,112,765	1,232,750	1,324,160	1,411,277	14
Missouri	11	6	1,855,452	1,848,775	1,767,411	1,937,684	2,106,599	2,246,430	2,289,831	2,515,325	2,691,255	2,859,953	14
Montana	*	*	*	*	*	*	279,349	291,429	315,512	343,160	373,947	*	NA
Nebraska	9	2	576,296	600,885	659,380	712,685	791,799	838,568	867,810	900,744	937,184	984,355	9
Nevada	8	7	750,335	825,163	684,752	766,581	842,155	895,586	984,486	1,077,380	1,216,838	1,319,684	22
New Hampshire	8	12	280,508	309,263	387,264	445,181	492,390	529,795	525,689	598,504	648,788	686,746	15
New Jersey	6	3	2,289,181	2,750,024	3,575,130	3,896,778	4,283,643	4,531,457	4,587,640	5,392,240	5,799,417	6,326,459	17
New Mexico	10	13	363,827	395,111	443,343	619,582	660,849	735,107	780,855	828,869	859,408	939,091	13
New York	11	5	4,833,816	5,016,524	5,918,136	6,749,096	7,429,249	7,915,526	8,937,683	8,829,070	9,453,613	9,939,759	13
North Carolina	12	8	2,536,068	2,730,178	3,105,811	3,377,331	3,767,598	4,610,120	4,094,715	4,305,521	4,554,723	4,875,916	13
North Dakota	*	*	*	*	*	*	*	245,578	*	*	*	*	NA
Ohio	14	6	3,237,786	3,278,960	4,150,498	4,255,934	4,739,795	4,887,376	5,212,204	5,659,459	5,817,211	6,188,081	9
Oklahoma	13	4	826,637	979,513	1,124,214	1,200,234	1,288,357	1,366,475	1,440,970	1,574,588	1,614,191	1,724,505	10
Oregon	10	5	914,848	1,082,425	1,201,207	1,268,909	1,399,279	1,473,883	1,682,343	1,682,036	1,778,936	1,894,285	13
Pennsylvania	10	6	2,767,474	3,850,372	4,129,186	4,378,216	4,849,085	4,987,067	5,258,844	5,681,653	6,073,573	6,420,037	13
Puerto Rico	6	8	*	1,090,005	757,613	1,374,747	1,128,736	1,136,619	1,516,808	1,401,599	1,631,266	1,698,702	21
Rhode Island	6	4	279,304	313,550	355,889	401,805	456,059	463,636	515,547	527,366	567,331	615,398	17
South Carolina	11	15	1,137,232	1,236,338	1,392,586	1,502,345	1,752,457	1,830,516	1,896,369	2,041,541	2,149,480	2,337,367	14
South Dakota	5	7	*	*	*	*	278,646	292,210	325,114	344,825	365,211	382,906	11
Tennessee	13	5	1,529,054	1,876,444	1,985,851	2,251,208	2,510,978	2,660,068	2,674,566	2,800,735	2,974,512	3,171,487	13
Texas	20	7	5,792,453	6,705,423	7,548,537	8,294,338	9,156,187	9,650,715	10,133,280	10,776,234	11,327,700	12,091,134	12
Utah	9	4	643,824	692,006	750,244	833,492	919,002	970,854	1,052,522	1,094,563	1,154,992	1,229,029	12
Vermont	*	3	*	*	*	*	*	*	*	*	*	*	NA
Virgin Islands	*	25	*	0	0	*	*	*	*	*	*	*	NA
Virginia	11	3	2,262,567	2,447,687	2,708,342	3,059,420	3,270,165	3,429,450	3,753,106	3,879,582	4,147,182	4,392,319	13
Washington	11	6	1,873,475	2,144,767	2,286,082	2,493,214	2,706,030	2,849,043	2,869,784	3,102,750	3,377,193	3,567,896	15
West Virginia	10	5	241,265	347,916	392,384	452,036	498,811	549,722	576,503	579,983	675,257	713,657	23
Wisconsin	11	8	1,525,818	1,342,908	1,698,520	2,008,679	2,229,389	2,523,956	2,396,562	2,533,215	2,723,985	2,831,645	12
Wyoming	5	2	127,634	*	*	173,939	194,665	168,232	191,939	276,344	295,706	277,658	0
Nationwide	85	7 %	79,696,083	90,643,058	101,043,219	114,028,928	123,990,857	130,751,459	138,878,293	147,623,734	157,042,082	167,313,001	13 %

NA -- Not Applicable.

* Data withheld to maintain firm confidentiality.

¹ Carriers with under 10,000 subscribers in a state were not required to report.

² Percentage of mobile wireless subscribers receiving their service from a mobile wireless reseller.

Table 14
Percentage of Zip Codes with Competitive Local Exchange Carriers (CLECs)

Number of CLECs	2000		2001		2002		2003		2004
	Jun	Dec	Jun	Dec	Jun	Dec	Jun	Dec	Jun
Zero	46.6 %	44.0 %	40.0 %	38.0 %	33.0 %	31.3 %	26.8 %	25.1 %	21.0 %
One	19.7	16.8	16.3	16.8	19.5	19.3	18.6	17.3	15.3
Two	9.1	10.4	9.9	10.0	10.3	10.4	10.0	10.4	9.8
Three	6.9	7.2	8.2	7.7	7.9	6.7	6.7	7.0	7.5
Four	5.0	5.5	5.6	6.1	6.6	6.3	5.6	5.3	6.1
Five	3.9	4.0	4.1	4.5	4.9	5.2	5.0	4.8	5.4
Six	2.4	3.0	3.3	3.8	4.0	4.4	4.4	4.7	5.6
Seven	1.6	2.3	2.6	2.9	3.1	3.5	4.1	4.1	5.4
Eight	1.2	1.7	2.2	2.2	2.5	2.9	3.6	3.7	5.4
Nine	1.1	1.4	1.7	2.1	1.9	2.6	3.1	3.2	4.0
Ten or More	2.5	3.7	5.9	5.9	6.3	7.3	12.2	14.4	14.7

Table 15
Percentage of Households in Zip Codes with Competitive Local Exchange Carriers

Number of CLECs	2000		2001		2002		2003		2004
	Jun	Dec	Jun	Dec	Jun	Dec	Jun	Dec	Jun
Zero	14.5 %	11.8 %	9.5 %	8.8 %	6.6 %	5.8 %	4.5 %	3.8 %	3.0 %
One	13.5	10.6	9.0	8.5	9.1	8.2	6.5	6.0	4.8
Two	11.9	10.6	8.8	9.7	9.0	8.3	6.1	5.7	4.8
Three	12.5	11.6	11.5	10.8	9.5	7.0	5.4	5.7	4.9
Four	11.1	11.3	10.1	9.7	10.3	8.3	6.0	5.5	5.6
Five	9.6	9.3	8.7	8.8	9.0	8.4	6.8	5.7	5.7
Six	6.4	7.2	7.6	8.0	8.4	8.4	7.1	6.9	7.0
Seven	4.3	6.1	6.0	6.7	7.6	7.6	7.9	6.7	8.1
Eight	3.7	4.9	5.6	5.3	6.0	7.0	8.0	7.4	9.8
Nine	3.7	4.2	4.5	5.3	4.6	7.0	7.2	7.0	8.4
Ten or More	8.9	12.2	18.8	18.3	19.7	23.9	34.6	39.5	37.9

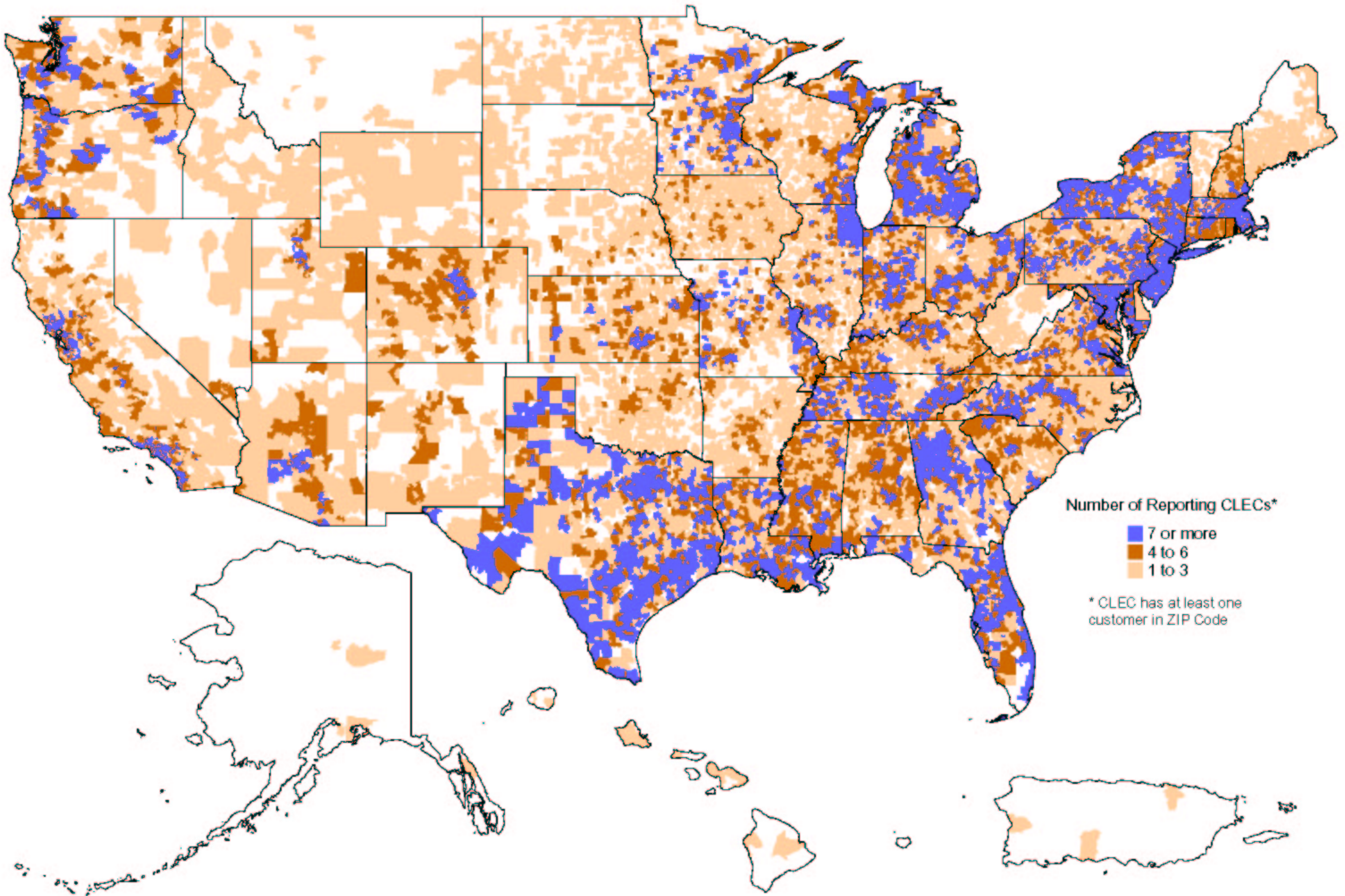
Source: Demographic Power Pack, Current Year Update (2000), MapInfo Corporation

Note: Figures may not add to 100% due to rounding.

Table 16
Percentage of Zip Codes with Competitive Local Exchange Carriers as of June 30, 2004

State	Number of CLECs								
	Zero	One - Three	Four	Five	Six	Seven	Eight	Nine	Ten or More
Alabama	18 %	32 %	12 %	13 %	10 %	7 %	6 %	2 %	0 %
Alaska	87	13	0	0	0	0	0	0	0
Arizona	11	35	6	5	6	7	12	14	5
Arkansas	43	46	10	0	0	0	0	0	0
California	14	32	8	10	9	8	8	5	6
Colorado	21	33	11	8	5	6	8	6	2
Connecticut	2	11	13	16	30	27	1	0	0
Delaware	2	91	7	0	0	0	0	0	0
Dist. of Columbia	0	12	20	28	40	0	0	0	0
Florida	2	12	4	4	5	5	4	5	59
Georgia	13	28	7	3	4	4	5	7	29
Hawaii	52	48	0	0	0	0	0	0	0
Idaho	41	59	0	0	0	0	0	0	0
Illinois	28	30	4	2	6	5	3	2	20
Indiana	8	40	8	8	9	10	11	4	1
Iowa	32	59	5	3	0	0	0	0	0
Kansas	26	41	7	8	5	5	7	1	0
Kentucky	24	46	11	8	3	4	3	1	0
Louisiana	6	28	5	9	13	9	23	7	0
Maine	11	87	2	0	0	0	0	0	0
Maryland	0	10	6	8	11	8	10	10	36
Massachusetts	0	8	6	7	5	7	15	12	40
Michigan	7	19	7	7	7	11	10	12	20
Minnesota	29	34	5	4	5	6	5	9	3
Mississippi	7	40	13	10	14	12	4	0	0
Missouri	42	24	7	3	3	9	7	5	0
Montana	90	10	0	0	0	0	0	0	0
Nebraska	55	35	5	5	0	0	0	0	0
Nevada	29	42	12	14	2	0	0	0	0
New Hampshire	1	43	13	13	13	16	0	0	0
New Jersey	0	3	3	2	2	6	9	7	67
New Mexico	42	43	15	0	0	0	0	0	0
New York	4	13	5	5	5	6	5	5	52
North Carolina	10	47	7	5	4	6	4	5	12
North Dakota	61	39	0	0	0	0	0	0	0
Ohio	9	40	6	5	6	4	6	6	18
Oklahoma	40	40	4	3	13	0	0	0	0
Oregon	19	35	6	5	6	5	12	3	9
Pennsylvania	11	35	8	5	6	6	7	6	16
Puerto Rico	80	20	0	0	0	0	0	0	0
Rhode Island	0	11	9	80	0	0	0	0	0
South Carolina	17	35	9	7	19	11	3	0	0
South Dakota	58	42	0	0	0	0	0	0	0
Tennessee	13	27	8	6	7	4	5	6	22
Texas	11	21	4	4	4	4	6	5	40
Utah	28	38	4	2	11	8	10	0	0
Vermont	66	34	0	0	0	0	0	0	0
Virginia	11	40	8	9	5	5	4	6	13
Washington	19	30	6	7	6	6	7	7	12
West Virginia	46	54	0	0	0	0	0	0	0
Wisconsin	27	38	4	4	9	10	8	0	0
Wyoming	43	57	0	0	0	0	0	0	0
Nationwide	21 %	33 %	6 %	5	6 %	5 %	5 %	4 %	15 %

Reporting CLECs by ZIP Code (As of June 30, 2004)



Number of Reporting CLECs*

- 7 or more
- 4 to 6
- 1 to 3

* CLEC has at least one customer in ZIP Code

Customer Response

Publication: *Local Telephone Competition: Status as of June 30, 2004.*

You can help us provide the best possible information to the public by completing this form and returning it to the Industry Analysis and Technology Division of the FCC's Wireline Competition Bureau.

1. Please check the category that best describes you:

- press
- current telecommunications carrier
- potential telecommunications carrier
- business customer evaluating vendors/service options
- consultant, law firm, lobbyist
- other business customer
- academic/student
- residential customer
- FCC employee
- other federal government employee
- state or local government employee
- Other (please specify)

2. Please rate the report: Excellent Good Satisfactory Poor No opinion

- | | | | | | |
|----------------------|--------------------------|--------------------------|--------------------------|--------------------------|--------------------------|
| Data accuracy | <input type="checkbox"/> | <input type="checkbox"/> | <input type="checkbox"/> | <input type="checkbox"/> | <input type="checkbox"/> |
| Data presentation | <input type="checkbox"/> | <input type="checkbox"/> | <input type="checkbox"/> | <input type="checkbox"/> | <input type="checkbox"/> |
| Timeliness of data | <input type="checkbox"/> | <input type="checkbox"/> | <input type="checkbox"/> | <input type="checkbox"/> | <input type="checkbox"/> |
| Completeness of data | <input type="checkbox"/> | <input type="checkbox"/> | <input type="checkbox"/> | <input type="checkbox"/> | <input type="checkbox"/> |
| Text clarity | <input type="checkbox"/> | <input type="checkbox"/> | <input type="checkbox"/> | <input type="checkbox"/> | <input type="checkbox"/> |
| Completeness of text | <input type="checkbox"/> | <input type="checkbox"/> | <input type="checkbox"/> | <input type="checkbox"/> | <input type="checkbox"/> |

3. Overall, how do you rate this report? Excellent Good Satisfactory Poor No opinion

- | | | | | |
|--------------------------|--------------------------|--------------------------|--------------------------|--------------------------|
| <input type="checkbox"/> | <input type="checkbox"/> | <input type="checkbox"/> | <input type="checkbox"/> | <input type="checkbox"/> |
|--------------------------|--------------------------|--------------------------|--------------------------|--------------------------|

4. How can this report be improved?

5. May we contact you to discuss possible improvements?

Name:

Telephone #:

To discuss the information in this report, contact: 202-418-0940 or for users of TTY equipment, call 202-418-0484		
Fax this response to	or	Mail this response to
202-418-0520		FCC/WCB/IATD Mail Stop 1600 F Washington, DC 20554