

What are the SBIR/STTR Programs?

SBIR

Small Business Innovation Research

STTR

Small Business Technology Transfer

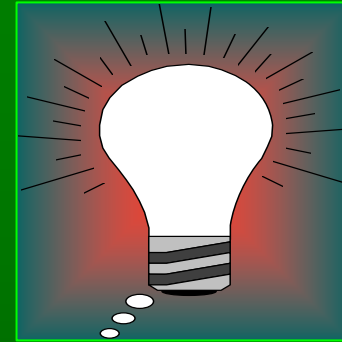
WHY SBIR/STTR ?????

- **Foster and encourage participation by all small businesses in technological innovation**
- **Stimulate technological innovation**
- **Use small business to meet federal R&D needs**
- **Increase private-sector commercialization innovations derived from federal R&D**

SBIR/STTR: 3-Phase Program*

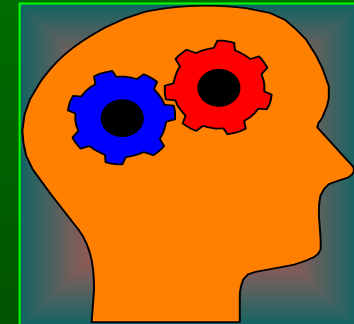
PHASE I

- Feasibility Study
\$100K and 6-month (SBIR)
or 12-month (STTR) Award



PHASE II

- Full Research/R&D
\$750K and 2-year Award
(SBIR/STTR)



PHASE III

- Commercialization Stage
- Use of non-SBIR/STTR Funds



*Depends on the Agency

Web sites

Agencies, Topics, more Info

www.sbirworld.com

www.zyn.com

Tennessee Resource

www.tnsbir.tennessee.edu

Registration to Receive Funding

www.ccr.gov/

Registrations and topics

www.grants.gov

www.fedbizopps.gov

Two types of funding agencies

- Contracts
 - Specific needs, problems to solve
- Grants
 - Look for good ideas

SBIR/STTR PROGRAM ELIGIBILITY CHECKPOINTS

- ✓ **Organized for-profit US small business**
- ✓ **At least 51% U.S.- owned by individuals
and independently operated**
- ✓ **Small Business located in the U.S.**
- ✓ **500 or fewer employees**

STTR PROGRAM

Applicant is Small Business Concern

Formal (written) **Cooperative R&D** Effort

Minimum 40% by small business

Minimum 30% by U.S. research institution

U.S. Research Institution

Federally Funded R&D Center (FRDC); College or University; other non-profit research organization:

SBIR AND STTR PROGRAMS

CRITICAL DIFFERENCES

Research Partner

- **SBIR:** Allows research institution partners
(Outsource ~ 33% Phase I and 50% Phase II R&D)
- **STTR:** Requires research institution partners
(e.g., universities, federal labs, FRDC)

AWARD ALWAYS MADE TO SMALL BUSINESS

SBIR AND STTR PROGRAMS

CRITICAL DIFFERENCES

Principal Investigator (PI)

SBIR: Primary employment (>50% during performance period) must be with small business concern

STTR: Primary employment not stipulated
(PI can be from research institution and/or from small business concern*)

***DISCUSS WITH AGENCIES**

SBIR / STTR Participating Agencies



**TOTAL ~ \$2.2 + B
FY 2006**

- DOD SBIR/STTR
- HHS SBIR/STTR
- NASA SBIR/STTR
- DOE SBIR/STTR
- NSF SBIR/STTR
- DHS SBIR/STTR
- USDA SBIR
- DOC SBIR
- ED SBIR
- EPA SBIR
- DOT SBIR