

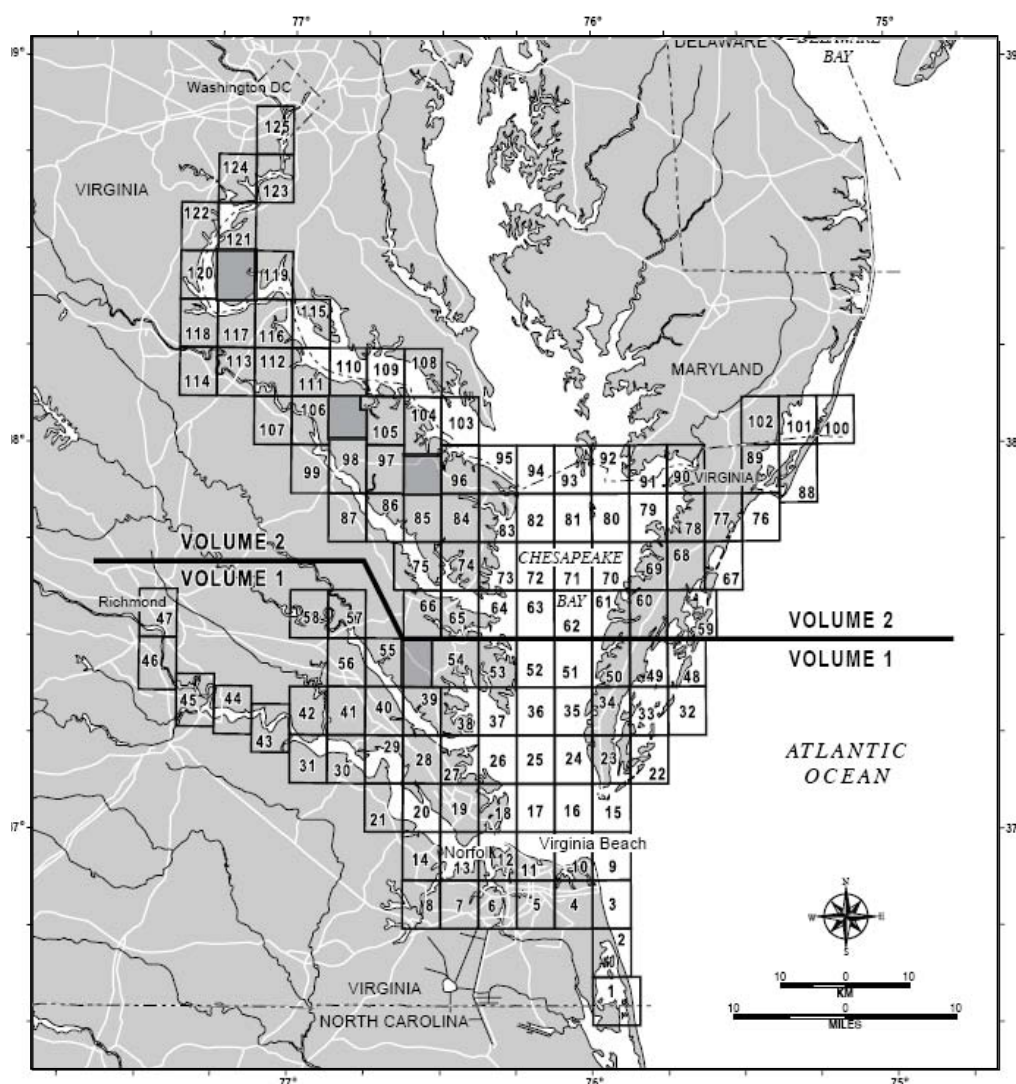
Virginia – April 2005

Environmental Sensitivity Index Maps



Introduction

The most widely used approach to sensitive environment mapping in the United States is NOAA's Environmental Sensitivity Index (ESI). This approach systematically compiles information in standard formats for coastal shoreline sensitivity, biological resources, and human-use resources. ESI maps are useful for identifying sensitive resources before a spill occurs so that protection priorities can be established and cleanup strategies designed in advance. Using ESIs in spill response and planning can reduce the environmental consequences of the spill and cleanup efforts.



NOAA is undertaking a wide-ranging program to promote open ESI standards and to develop digital ESI databases for high-priority coastal areas in partnerships with states and other Federal agencies. NOAA has developed guidelines for ESI data users that facilitate data exchange, provide a mechanism for evaluating data quality, and allow development of computer applications for displaying and reproducing ESI maps. ESI guidelines, data, and maps help users in both government and the private sector develop applications for coastal management activities that go beyond traditional spill response.

Your ESI DVD contains the following files and directories:

READ1.PDF is an electronic version of this hard-copy document in Portable Document Format (pdf).

AVPROJ contains an ArcView® 3.x project and the supporting shape and dbf files. The subdirectory AVPROJ contains the project file, VIRGINIA.APR with documentation and software for installation.

The project itself is a single view containing a theme for each ESI data layer. Themes have been symbolized using the standard ESI colors and patterns. It includes links from the biology and socioeconomic themes to a flat file version of the ESI tables. An ESI menu enables links to searchable breeding and source tables for more complex queries.

DBFILES is broken down into two subdirectories, DESKTOP and RELFILES. The DESKTOP directory contains a simplified flat file format that permits data queries without establishing the complex links needed for the relational files. Supporting data tables allow more complex queries of the breeding and source items. These are the tables that are used in the geodatabase, the ArcView project and with the ESI viewer.

The RELFILES directory contains the relational data tables that were used during the ESI data collection. These are a set of normalized, relational tables that will maintain the integrity of the data during updates. Though they are considerably more complex, these tables should be used for maintenance and updating of the ESI data set.

DOCUMENT contains atlas-specific metadata that should be referenced for entity and attribute information as well as data lineage. The Virginia metadata are provided in html, sgml, and text formats as well as a pdf. **GUIDE.PDF** is also in the document directory. This gives general information about how ESI data are collected and general GIS/database considerations.

ESI_VIEW contains Macintosh and Windows installers for a standalone ESI data viewer. This viewer provides a means for users without access to commercial GIS software to view and query the pre-symbolized ESI vector, data layers. The Macintosh version requires a post 10.3 version of Mac OS X be installed. The Windows version requires a minimum of Windows 2000 - service pack 4 or Windows XP - service pack 2.

GEODATABASE contains the ESI data in a geodatabase format for use in ArcGIS 9.2. To use, copy the entire subdirectory, Virginia (found in the geodatabase folder), on to your hard drive. VirginiaESI.mxd can be launched by double-clicking or by opening from within ArcGIS. Relates to supporting tables and the standard ESI symbolization have been saved to the mxd. Layer files are also provided. These can be used with the geodatabase if you wish to create your own .mxd or if you want to use the ESI files with other data you have already symbolized. The layer files have the ESI symbolization saved as well as the links to the data tables. The geodatabase tables *biofile*, *breed_dt*, *sources* and *soc_dat* should be added to any project where you are using the ESI layer files.

A number of ESI tools have been developed to ease the use of the data. They are provided in the directory *dlls*. Tools can also be downloaded from:

<http://response.restoration.noaa.gov/esitoolkit>. This site should be checked on occasion for possible new tools and updates or bug fixes to existing tools. The tools can be used with the layer files as long as the data tables have been loaded into the current .mxd.

SOURCE contains the ESI geographic data in uncompressed, double-precision, Arc export file format. These data (as all geographic data on this CD) are provided in geographic coordinates, NAD 27.

SYMBOLS contains the ESI symbology and lookup tables for use with ARCEDIT™ and ARCPLOT software. A readme.txt file tells where these files should be installed and how they work.

PDFS contains electronic versions of the Virginia ESI atlas in portable document format. The document **GUIDE.PDF** describes how to use the navigable pdf software, for example, to link from the index to the appropriate atlas page then to the back of the map. The pdfs may be used on-line or are excellent for printing out individual atlas pages.

TO ORDER

- Email orr.library@noaa.gov;
- Visit <http://response.restoration.noaa.gov>
- Call 206/526-6400