



DEPARTMENT OF LABOR AND INDUSTRIAL RELATIONS

News Release

LINDA LINGLE
GOVERNOR

NELSON B. BEFITEL, DIRECTOR
COLLEEN Y. LaCLAIR, DEPUTY DIRECTOR
Phone: (808) 586-8844
Fax: (808) 586-9099

MR 2003 10

For Immediate Release: December 21, 2004

**SEASONALLY ADJUSTED UNEMPLOYMENT RATE DOWN 1.1%
FROM ONE YEAR AGO AS RATE REMAINS STABLE AT 3.3 PERCENT
FOR NOVEMBER**

Hawaii's Unemployment Rate Third Lowest in The Nation

HONOLULU- The Hawaii State Department of Labor and Industrial Relations announced today that the November statewide seasonally adjusted unemployment rate remained unchanged over-the-month at 3.3 percent. In contrast, the seasonally adjusted national unemployment rate dipped by 0.1 percentage point, going from 5.5 percent in October to 5.4 percent in November. One year ago, Hawaii's seasonally adjusted unemployment rate stood at 4.4 percent, while the seasonally adjusted national unemployment rate was 5.9 percent. For the past seven months, Hawaii's seasonally adjusted unemployment rate has been below three and one-half percent. The statewide seasonally adjusted labor force in November totaled 637,550 and was composed of 615,950 employed and 21,600 unemployed.

In another measure of employment, total seasonally adjusted non-agricultural jobs increased in November over October by 3,600 jobs. In the private sector, over-the-month job gains were experienced in Leisure & Hospitality, which grew by 300 jobs, and in Education & Health Services, which expanded by 200 jobs. The Trade, Transportation, & Utilities industry

series declined over-the-month by 300 jobs. Largely due to the hiring of general election workers, government employment in November went up by 1,800 jobs over October.

Compared with one year ago, Hawaii's seasonally adjusted nonagricultural job count has increased by 20,300 or 3.5 percent. Strong over-the-year employment gains have occurred in Trade, Transportation, & Utilities (+5,900, +5.4 percent) and in Leisure & Hospitality (+5,000, +5.0 percent). Education & Health Services have also gone up in comparison with November 2003, rising by 2.9 percent, or 1,900 jobs.

"Hawaii's economy has had a banner year in 2004, benefiting from the creation of new jobs in numerous sectors," said Nelson Befitel, Director of Labor and Industrial Relations.

#####

For more information, contact:
James P. Hardway
Assistant to the Director
Phone: (808) 586-8845
Fax: (808) 586-9099
Email: jhardway@hawaii.gov

LABOR FORCE AND JOBCOUNT ESTIMATES -NOT SEASONALLY ADJUSTED

November 2004 Report, Statewide

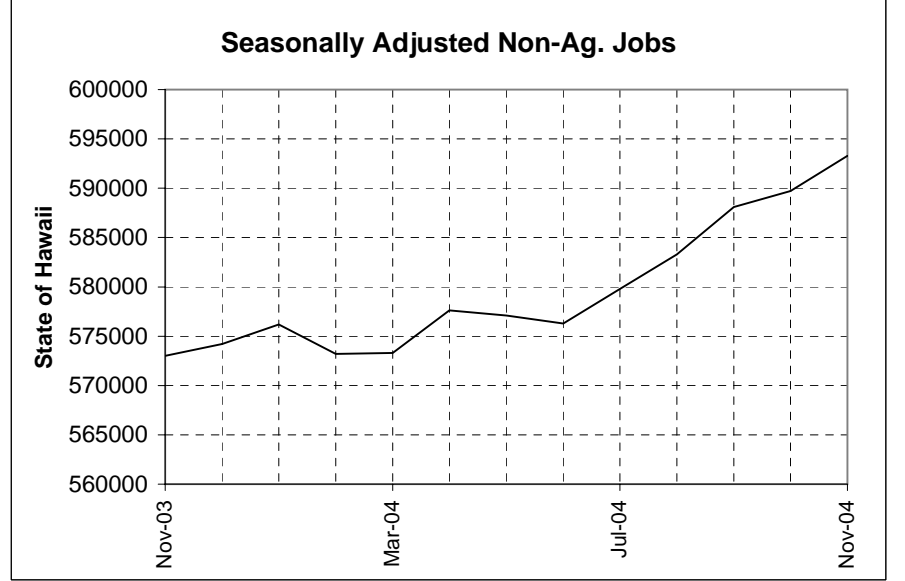
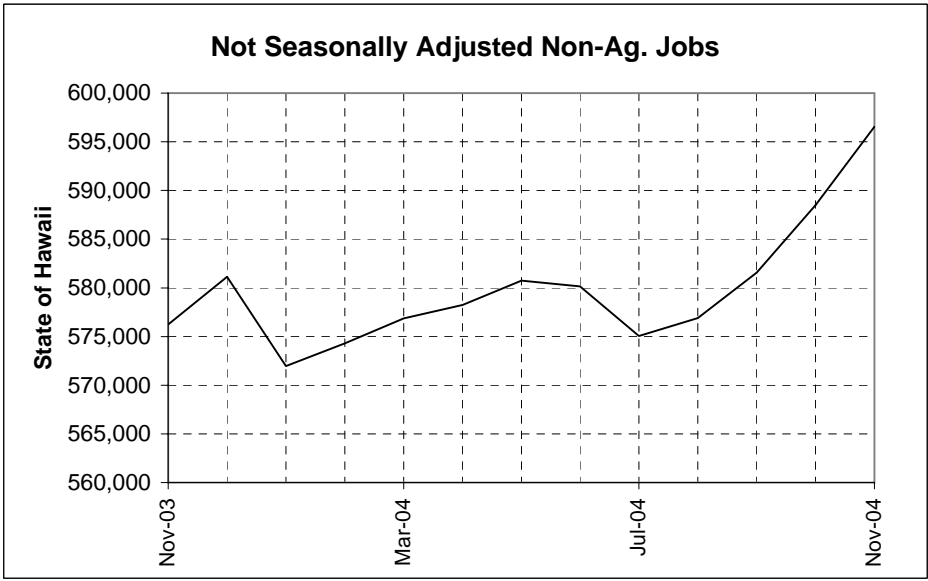
	DEPARTMENT OF LABOR -- LABOR FORCE ESTIMATES							
	STATEWIDE							
	(NOT SEASONALLY ADJUSTED)							
	Nov-04	Oct-04	Nov-03	CHANGE FROM ONE MONTH AGO		CHANGE FROM ONE YEAR AGO		
CIVILIAN LABOR FORCE	637.6	631.0	627.7	6.6	1.0%	9.9	1.6%	
TOTAL EMPLOYED	616.0	610.3	600.0	5.7	0.9%	16.0	2.7%	
UNEMPLOYED	21.6	20.7	27.6	0.9	4.3%	-6.0	-21.7%	
percent of Labor Force	3.4%	3.3%	4.4%					
Total Nonfarm	596.6	588.5	576.2	8.1	1.4%	20.4	3.5%	
Total Private	471.9	467.6	454.9	4.3	0.9%	17.0	3.7%	
Goods Producing	45.4	45.5	43.6	-0.1	-0.1%	1.8	4.2%	
Service-Providing	551.1	543.0	532.6	8.1	1.5%	18.5	3.5%	
Nat. Res & Construct	30.1	30.0	28.6	0.1	0.0%	1.5	5.2%	
Manufacturing	15.4	15.5	15.1	-0.1	-0.4%	0.3	2.3%	
Durable Goods	4.4	4.4	4.1	0.0	0.3%	0.3	6.4%	
Non-Durable Goods	11.0	11.1	10.9	-0.1	-0.6%	0.1	0.7%	
Trade, Transportation,	116.6	114.2	110.5	2.4	2.1%	6.1	5.5%	
Wholesale Trade	17.2	17.2	16.9	0.0	0.2%	0.3	1.7%	
Retail Trade	70.5	68.3	66.7	2.2	3.2%	3.8	5.7%	
Food and Beverage Sto	13.0	12.9	13.0	0.1	0.7%	0.0	0.1%	
Clothing and Clothing	10.3	9.9	9.7	0.4	4.0%	0.6	5.5%	
General Merchandise S	13.4	12.5	11.7	0.9	7.3%	1.7	14.4%	
Trans,Warehouse, Util	28.9	28.6	26.8	0.3	0.8%	2.1	7.6%	
Utilities	2.7	2.7	2.7	0.0	-0.1%	0.0	2.4%	
Transport & Warehouse	26.1	25.9	24.2	0.2	0.9%	1.9	8.1%	
Air Transportation	10.5	10.3	10.1	0.2	1.3%	0.4	4.1%	
Information	11.0	10.9	10.0	0.1	0.7%	1.0	9.7%	
Telecommunications	3.8	3.8	3.9	0.0	-0.2%	-0.1	-4.3%	
Financial Activities	29.1	29.0	28.6	0.1	0.3%	0.5	1.7%	
Finance and Insurance	16.5	16.4	16.1	0.1	0.3%	0.4	2.3%	
Real Estate and Renta	12.6	12.5	12.4	0.1	0.2%	0.2	1.0%	
Professional and Busin	71.1	70.7	70.5	0.4	0.5%	0.6	0.9%	
Professional, Scienti	23.3	23.0	22.3	0.3	1.5%	1.0	4.4%	
Management of Compani	6.8	6.8	6.8	0.0	0.1%	0.0	-0.6%	
Administrative and Su	41.0	41.0	41.3	0.0	0.1%	-0.3	-0.8%	
Educational and Health	69.1	68.4	67.1	0.7	1.0%	2.0	3.0%	
Educational Services	14.2	13.7	13.8	0.5	3.2%	0.4	2.4%	
Elementary and Second	7.1	7.0	7.2	0.1	1.6%	-0.1	-1.0%	
Health Care and Socia	55.0	54.7	53.3	0.3	0.5%	1.7	3.2%	
Ambulatory Health Car	23.0	22.9	22.3	0.1	0.1%	0.7	2.9%	
Hospitals	12.8	12.7	12.8	0.1	0.9%	0.0	0.3%	
Nursing and Residenti	6.4	6.4	6.1	0.0	1.0%	0.3	5.4%	
Social Assistance	12.7	12.7	12.1	0.0	0.4%	0.6	5.5%	
Leisure and Hospitalit	105.1	104.6	100.1	0.5	0.6%	5.0	5.0%	
Arts, Entertainment,	11.6	11.6	11.1	0.0	0.4%	0.5	5.0%	
Accommodation and Foo	93.5	92.9	89.0	0.6	0.6%	4.5	5.0%	
Accommodation	38.6	38.4	36.6	0.2	0.5%	2.0	5.5%	
Food Services and Dri	54.9	54.5	52.4	0.4	0.6%	2.5	4.7%	
Full-Service Restaura	28.1	28.0	26.7	0.1	0.4%	1.4	5.2%	
Other Services	24.5	24.4	24.6	0.1	0.2%	-0.1	-0.5%	
Government	124.7	120.8	121.3	3.9	3.2%	3.4	2.8%	
Federal Government	31.6	31.7	31.6	-0.1	-0.6%	0.0	0.0%	
Ship Building & Repai	4.2	4.2	4.7	0.0	0.6%	-0.5	-11.5%	
Department of Defense	15.2	15.3	15.7	-0.1	-1.2%	-0.5	-3.5%	
State Government	76.1	72.1	72.8	4.0	5.5%	3.3	4.5%	
State Govt. Education	49.1	48.4	49.3	0.7	1.5%	-0.2	-0.3%	
Local Government	17.0	17.0	16.9	0.0	0.3%	0.1	0.5%	

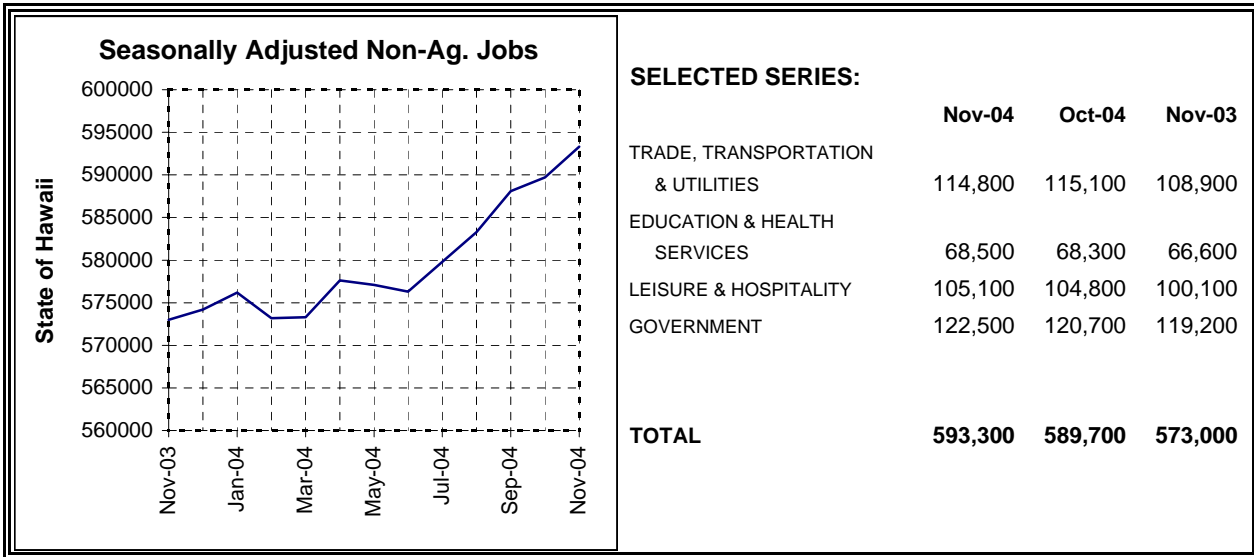
Not Seasonally Adjusted Non-Ag. Jobs

	Nov-04	Oct-04	Nov-03
NAT. RESOURCES, MINING & CONSTR.	30,050	30,050	28,550
MANUFACTURING	15,400	15,450	15,050
TRADE, TRANSPORTATION & UTILITIES	116,600	114,150	110,450
INFORMATION	10,950	10,900	10,000
FINANCIAL ACTIVITIES	29,050	28,950	28,550
PROFESSIONAL & BUSINESS SERVICES	71,100	70,750	70,450
EDUCATIONAL & HEALTH SERVICES	69,150	68,450	67,100
LEISURE & HOSPITALITY	105,150	104,550	100,100
OTHER SERVICES	24,450	24,400	24,600
GOVERNMENT	124,650	120,850	121,300
TOTAL	596,550	588,500	576,250

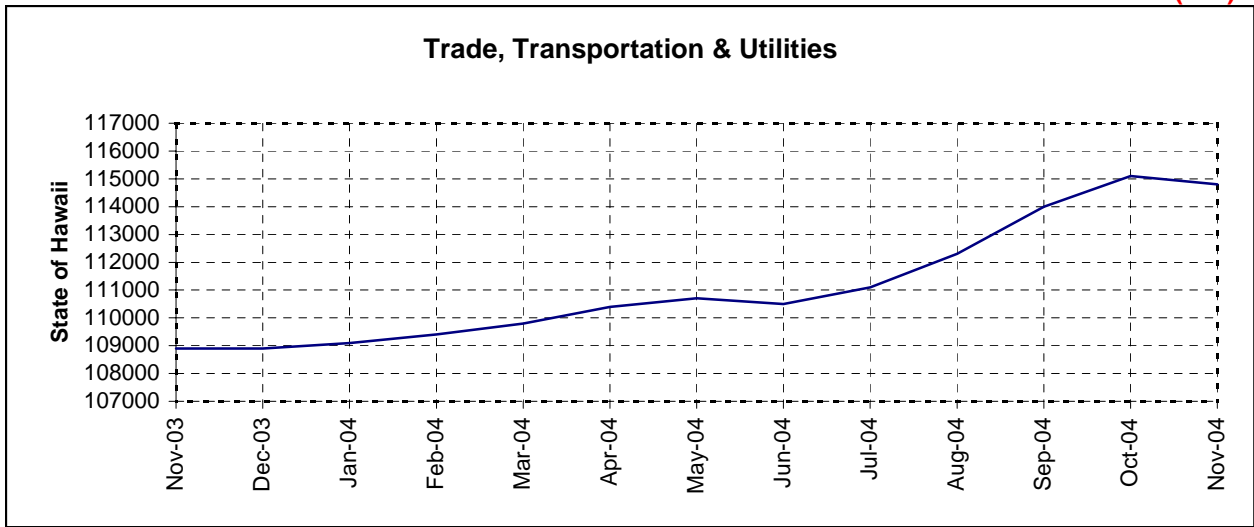
Seasonally Adjusted Non-Ag. Jobs

	Nov-04	Oct-04	Nov-03
TRADE, TRANSPORTATION & UTILITIES	114,800	115,100	108,900
EDUCATIONAL AND HEALTH SERVICES	68,500	68,300	66,600
LEISURE & HOSPITALITY	105,100	104,800	100,100
GOVERNMENT	122,500	120,700	119,200
TOTAL	593,300	589,700	573,000

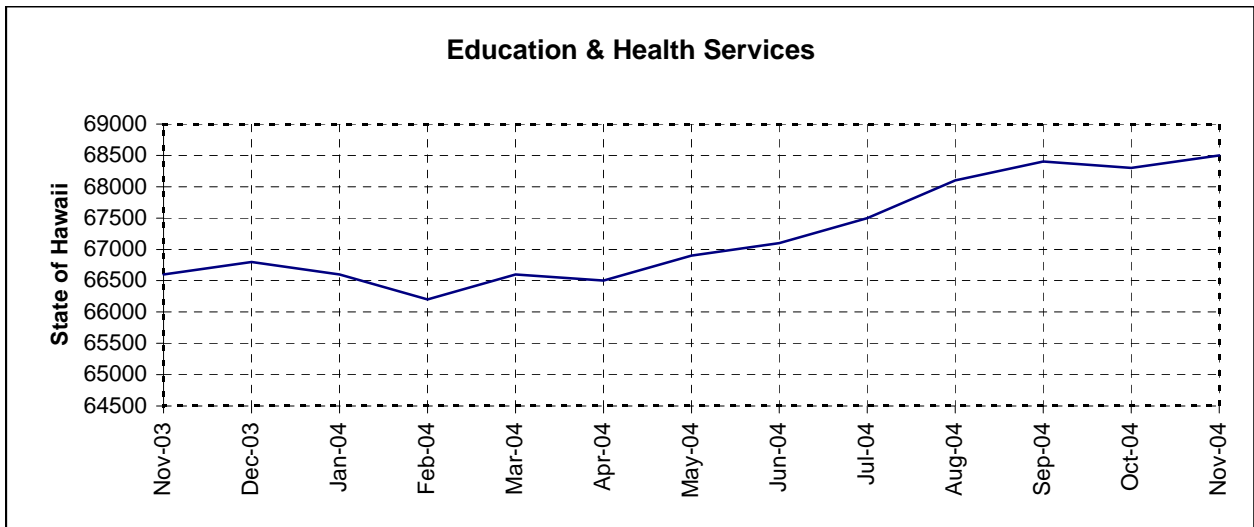


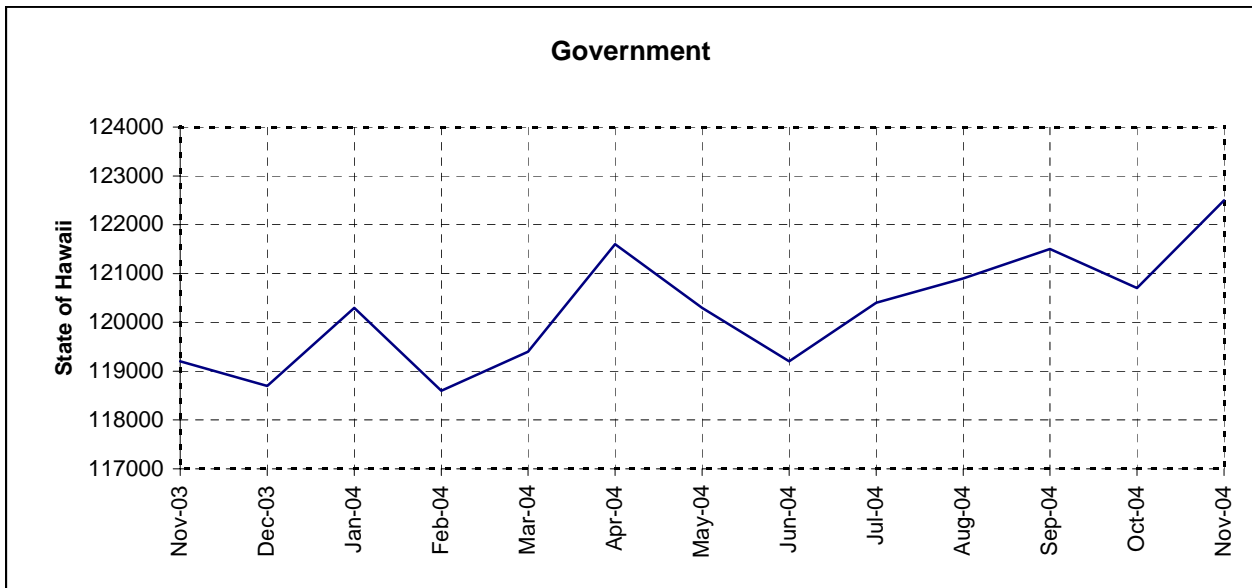
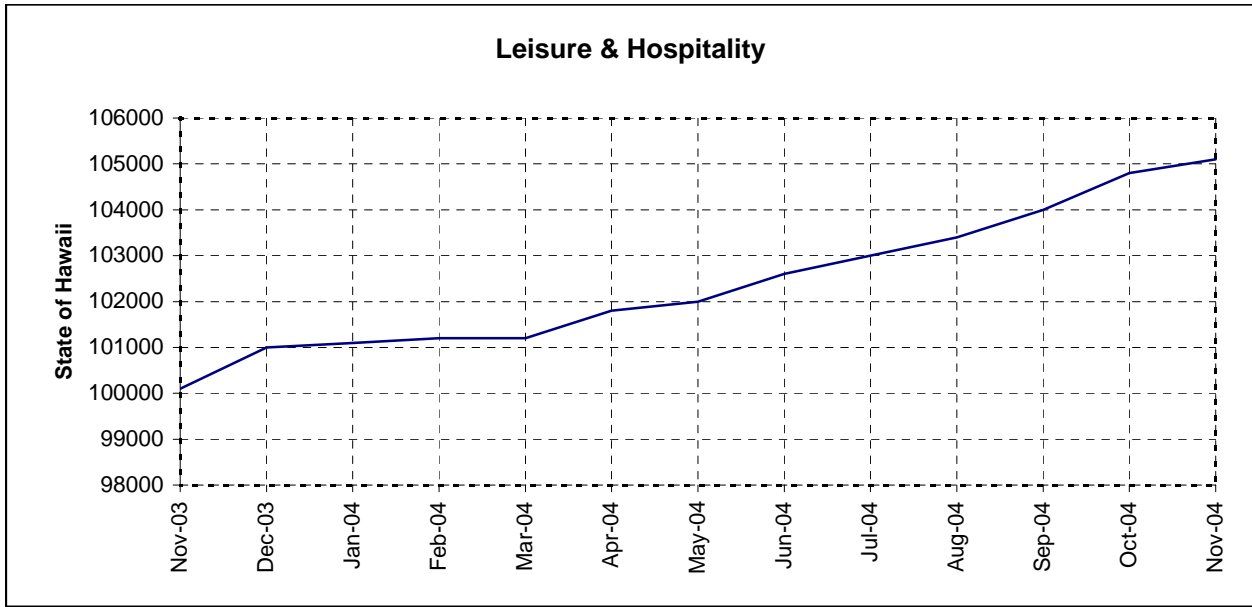


(300)



200





UNEMPLOYMENT RATES- NOT SEASONALLY ADJUSTED

	NOV 2004	OCT 2004	NOV 2003
STATE	3.4	3.3	4.4
HONOLULU	3.1	3.0	4.1
HAWAII COUNTY	4.8	4.6	5.9
KAUAI	4.5	4.1	4.7
MAUI COUNTY	3.3	3.3	4.7
Maui Island	3.0	3.0	4.4
Molokai	10.7	11.4	11.5
Lanai	4.2	4.4	4.2
U. S.	5.2	5.1	5.6

UNEMPLOYMENT RATES- SEASONALLY ADJUSTED*

	NOV 2004	OCT 2004	NOV 2003
STATE	3.3	3.3	4.4
U. S.	5.4	5.5	5.9

	<u>Nov 2004</u>	<u>Oct 2004</u>	<u>Nov 2003</u>
Labor Force	637,550	631,000	626,150
-----	-----	-----	-----
Employment	615,950	610,300	598,550
-----	-----	-----	-----
Unemployment	21,600	20,700	27,600
-----	-----	-----	-----

	Nov 2003	Dec	Jan	Feb	Mar	Apr	May	Jun	Jul	Aug	Sep	Oct	Nov 2004
U. S.	5.6	5.4	6.3	6.0	6.0	5.4	5.3	5.8	5.7	5.4	5.1	5.1	5.2
Hawaii	4.4	4.0	3.8	3.9	3.5	3.6	3.0	3.5	3.3	3.1	3.2	3.3	3.4

	Nov 2003	Dec	Jan	Feb	Mar	Apr	May	Jun	Jul	Aug	Sep	Oct	Nov 2004
U. S.	5.9	5.7	5.6	5.6	5.7	5.6	5.6	5.6	5.5	5.4	5.4	5.5	5.4
Hawaii	4.4	4.4	3.9	4.2	3.8	3.6	3.0	3.1	3.0	2.9	3.1	3.3	3.3

