

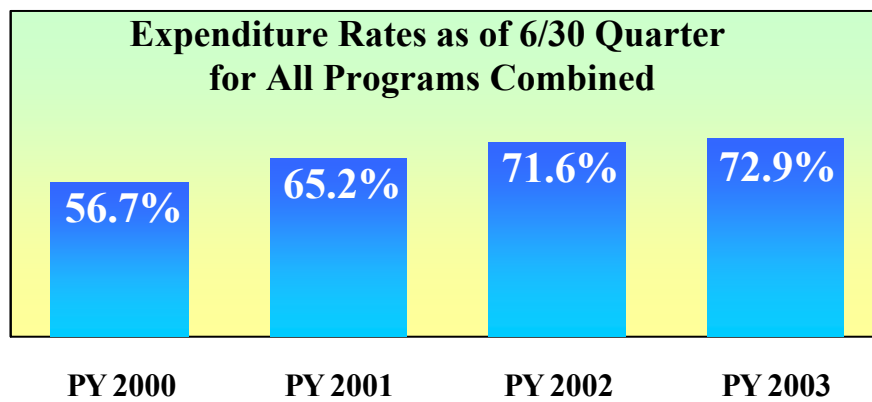


**WIA
STATE
FORMULA
SPENDING**

**for PY 2003
as of 6/30/04**

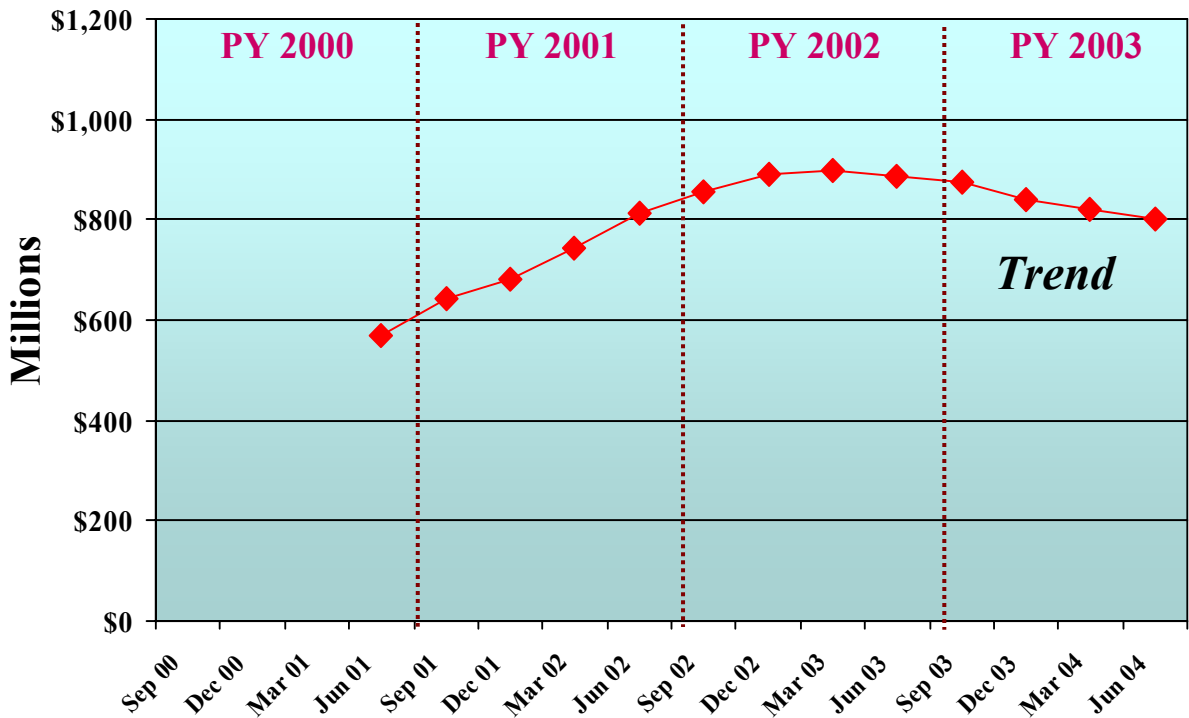
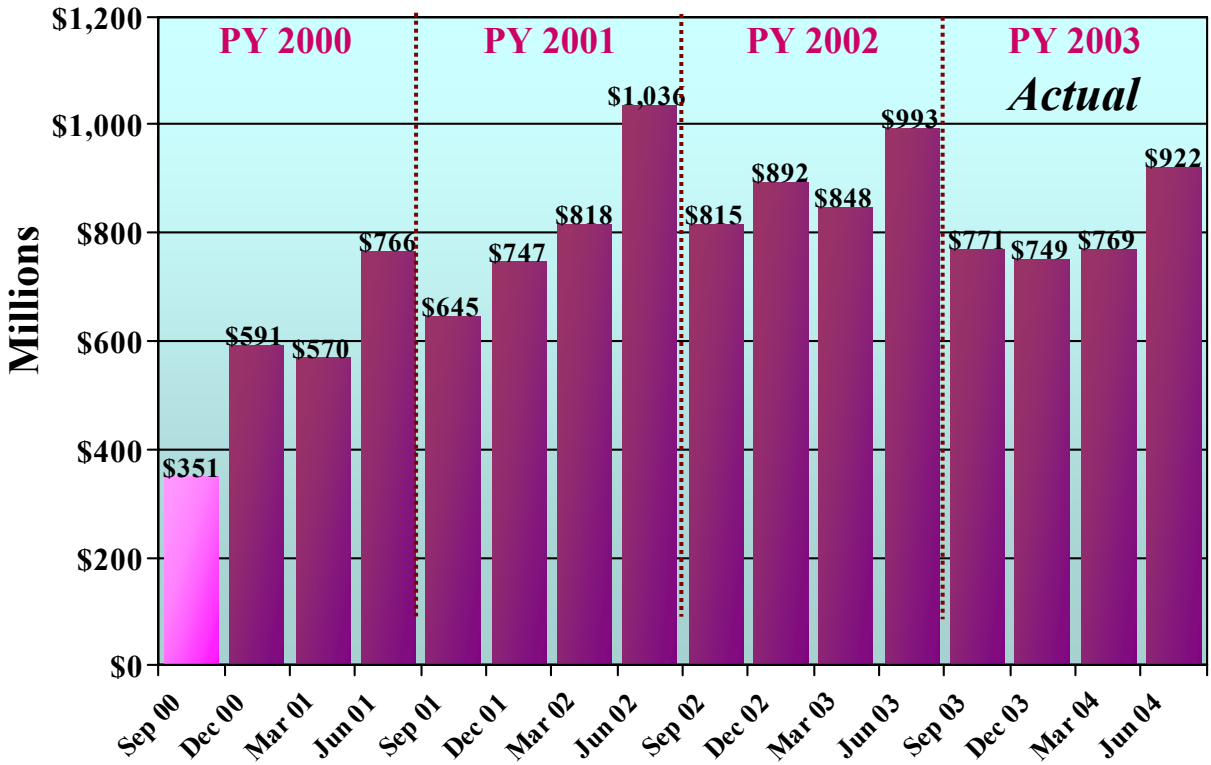
**U. S. Department of Labor
Employment and Training Administration**

WIA Adult, Youth and Dislocated Worker Formula Programs State Spending for PY 2003, as of the Quarter Ending 6/30/04 Highlights

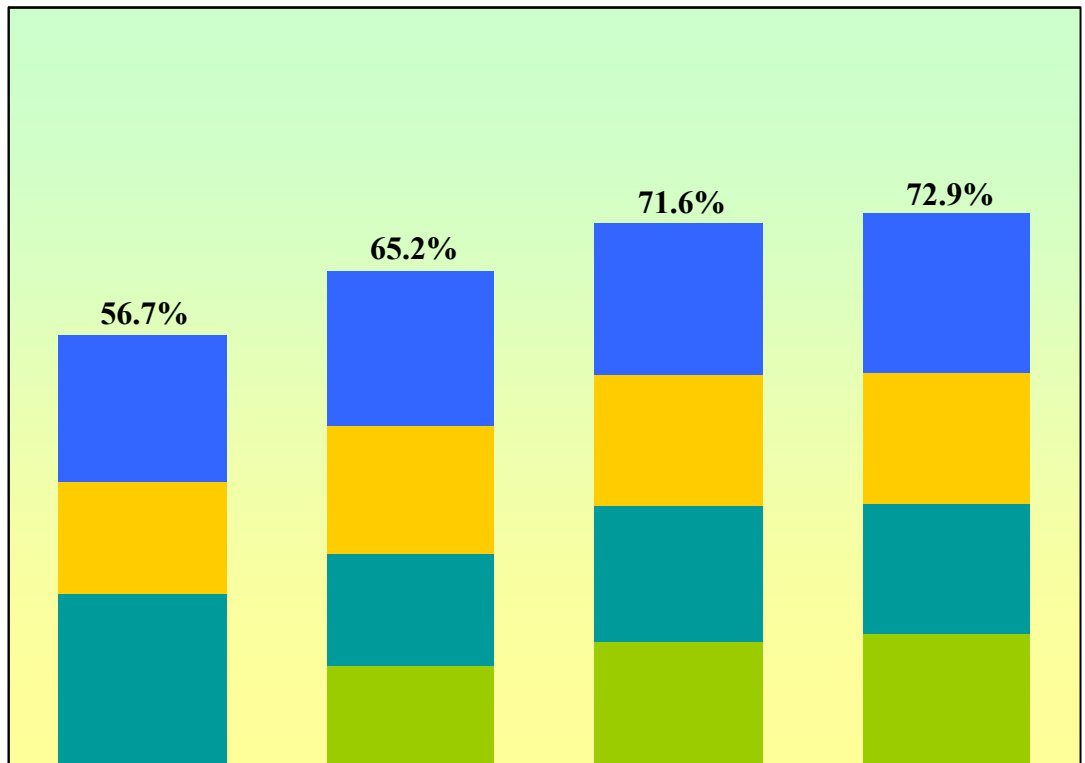


- State spending of formula funds in the WIA Youth, Adults, and Dislocated Workers programs followed the traditional pattern of higher spending in the fourth quarter of PY 2003 as compared to earlier quarters in the year.
- As of 6/30/04, States were spending 72.9 % of available funds in all three programs for PY 2003, virtually the same level as 71.6 % for PY 2002.
- Total spending for PY 2003 as of 6/30/04 is \$3.2 billion, down \$344 million, or -9.6 %, compared to last year, with the total available funding \$563.5 million below last year's level.
- The Youth program continued the upward trend in expenditure rates since PY 2000, while the Adults and Dislocated Workers programs were at essentially the same rates as last year after increasing from PY 2002 and PY 2001. The Dislocated Workers program continued to spend a lower proportion of available funds than the other programs.
- Spending rates at state and local activity levels were, respectively, 58.9 % and 78.5%, compared to 55.5% and 78.1% for PY 2002. Since PY 2000, State spending rates have lagged behind local spending rates, and the local administration activity spending rate, while higher than state activity level spending, has been lower than local program rates.
- For PY 2003 23 States showed increases in expenditure rates in all programs combined compared to PY 2002 rates.

WIA Youth/Adult/Dislocated Worker Formula Programs, Combined Net Quarterly State Spending , PY 2000-PY 2003 As of 6/30/04

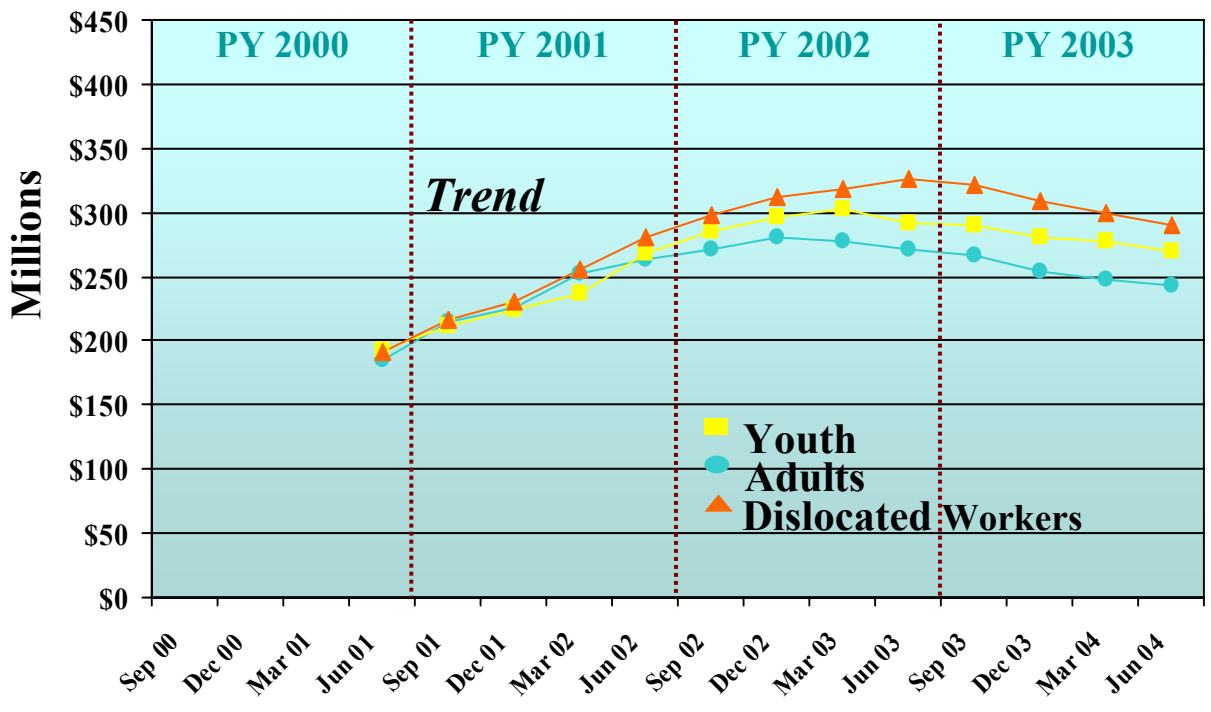
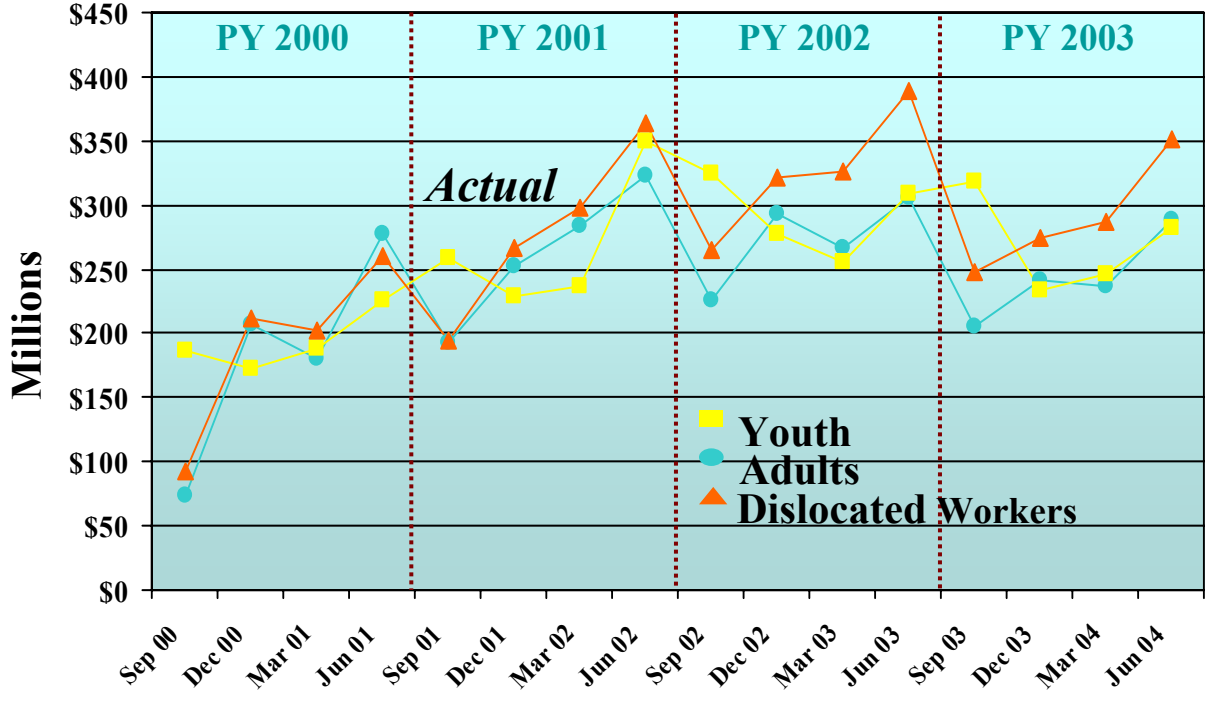


WIA Youth/Adults/Dislocated Worker Formula Programs, Combined Expenditure Rates for PY 2000 - 2003

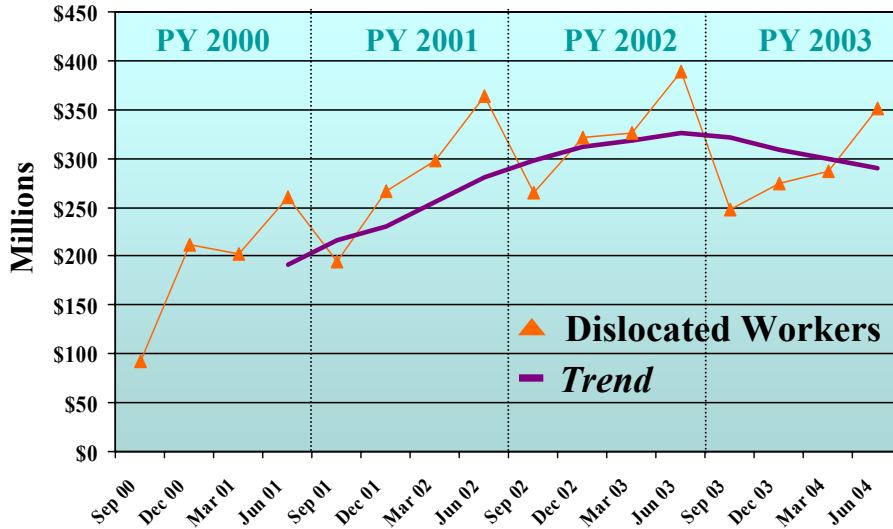
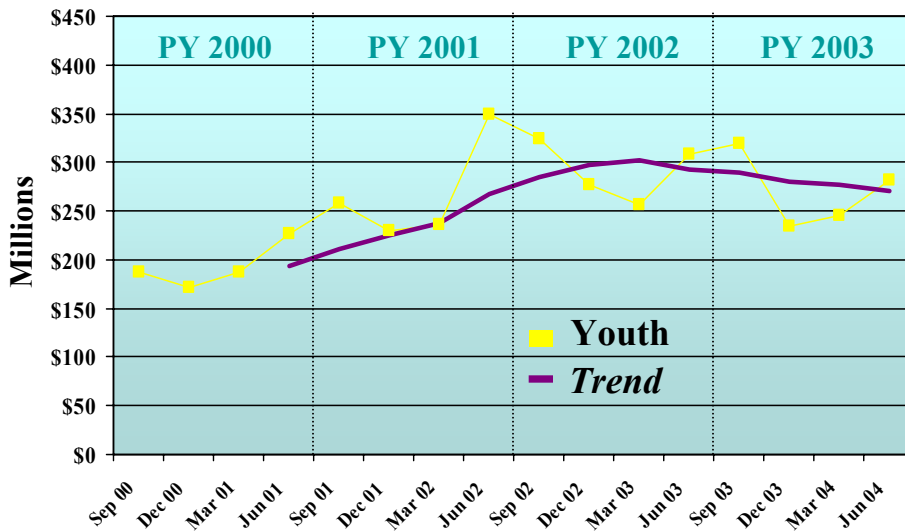
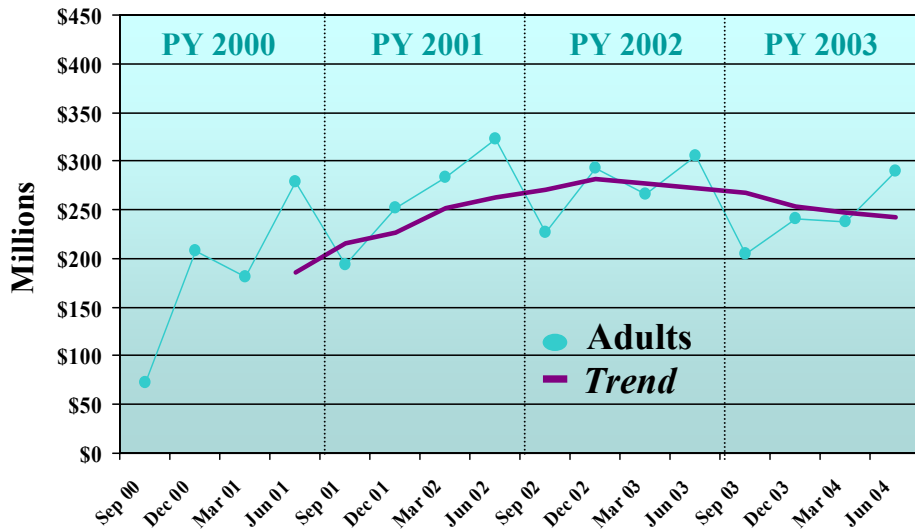


	PY 2000	PY 2001	PY 2002	PY 2003
4th Qtr	19.1%	20.4%	20.1%	21.0%
3rd Qtr	14.7%	16.6%	17.0%	17.3%
2nd Qtr	22.9%	14.8%	17.9%	17.0%
1st Qtr	n/a, included in 2 nd Qtr	13.4%	16.6%	17.6%

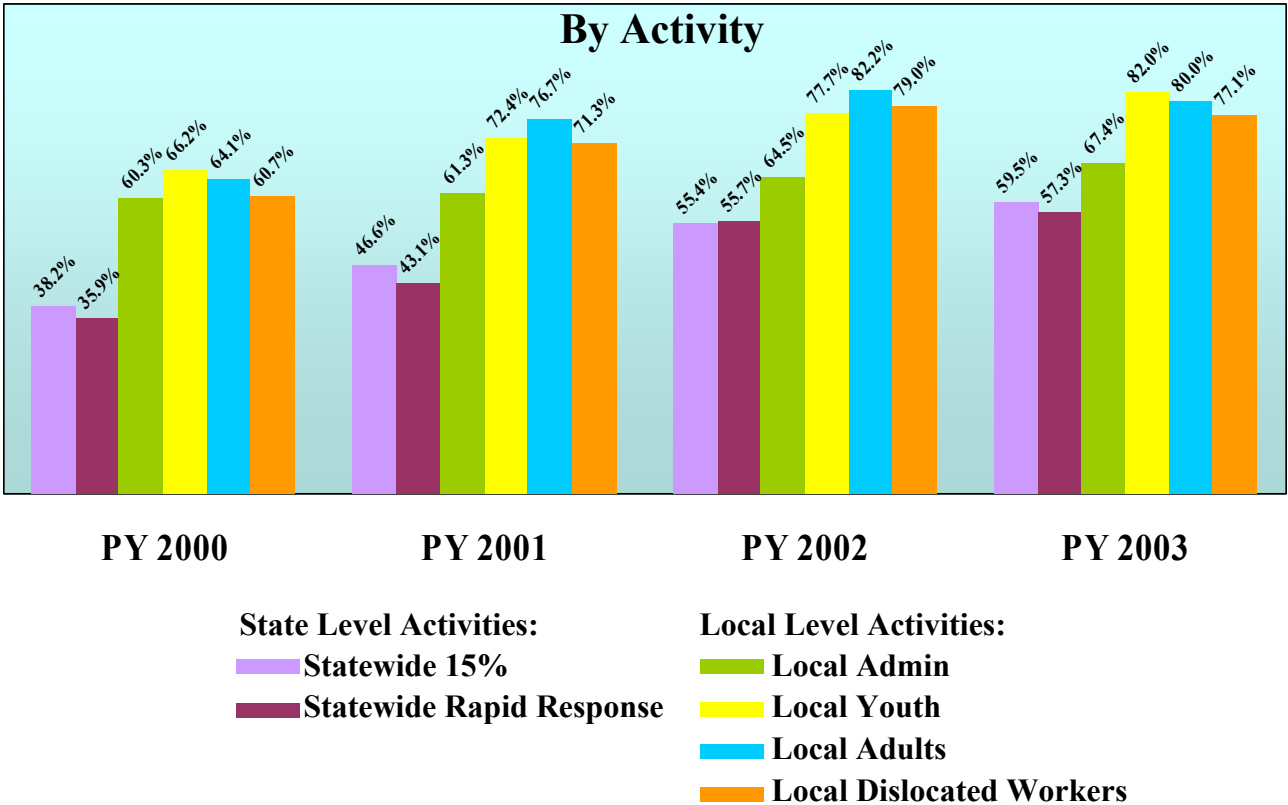
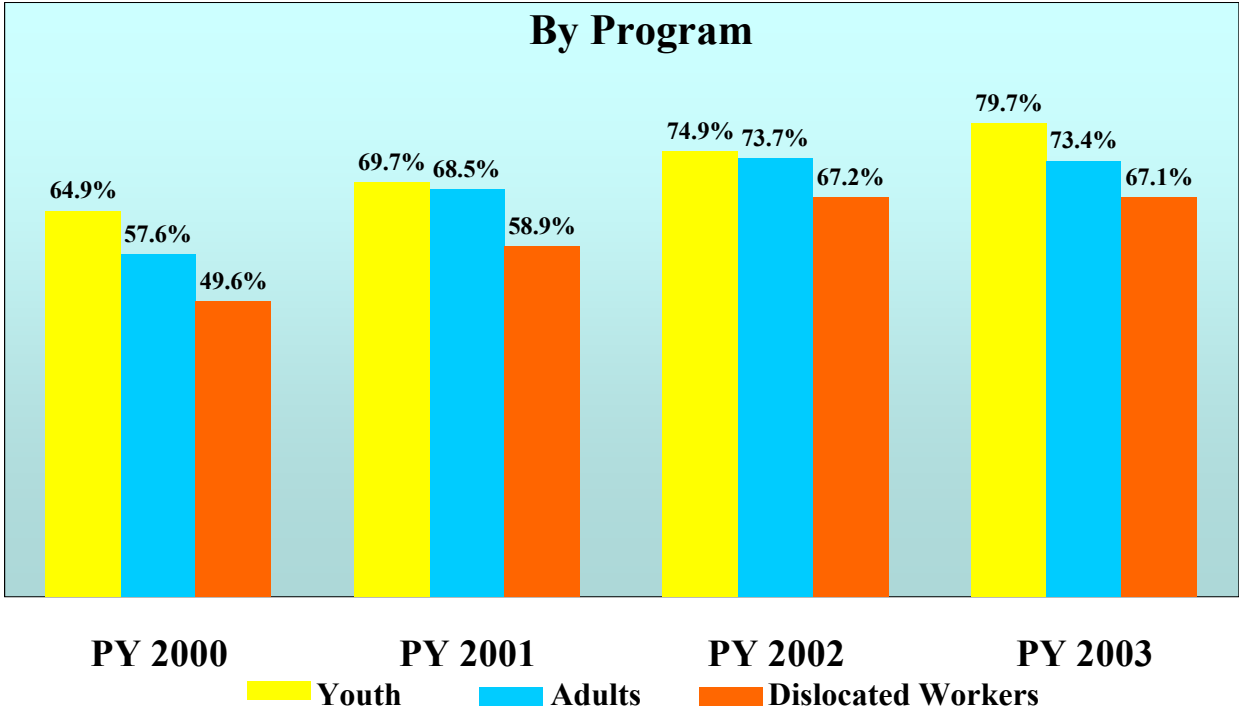
WIA Youth/Adult/Dislocated Worker Formula Programs Net Quarterly State Spending , PY 2000-PY 2003 As of 6/30/04



WIA Youth/Adult/Dislocated Worker Formula Programs Net Quarterly State Spending , PY 2000-PY 2003 As of 6/30/04

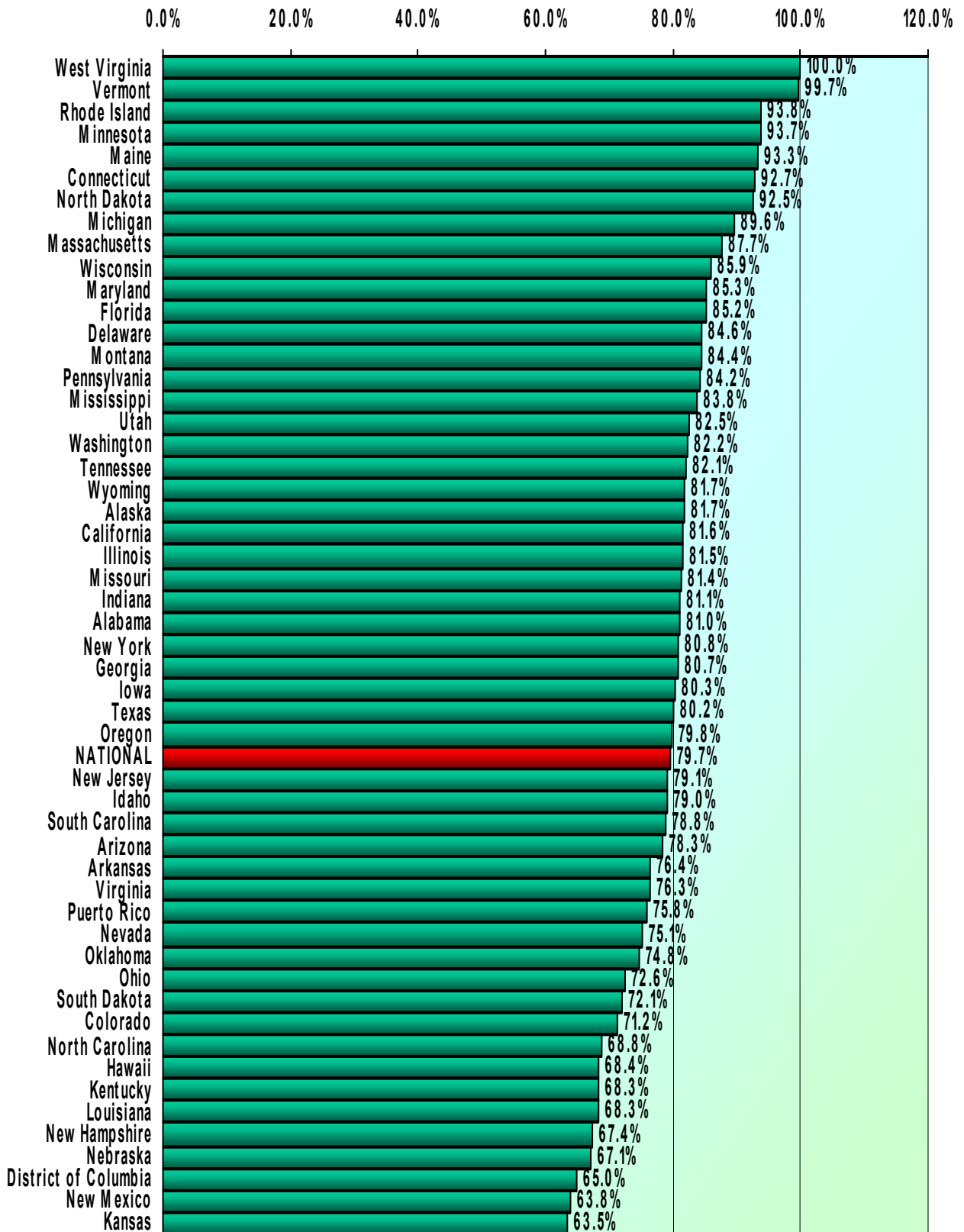


WIA Formula Programs Expenditure Rates, PY 2000 - PY 2003 As of Quarter Ending 6/30



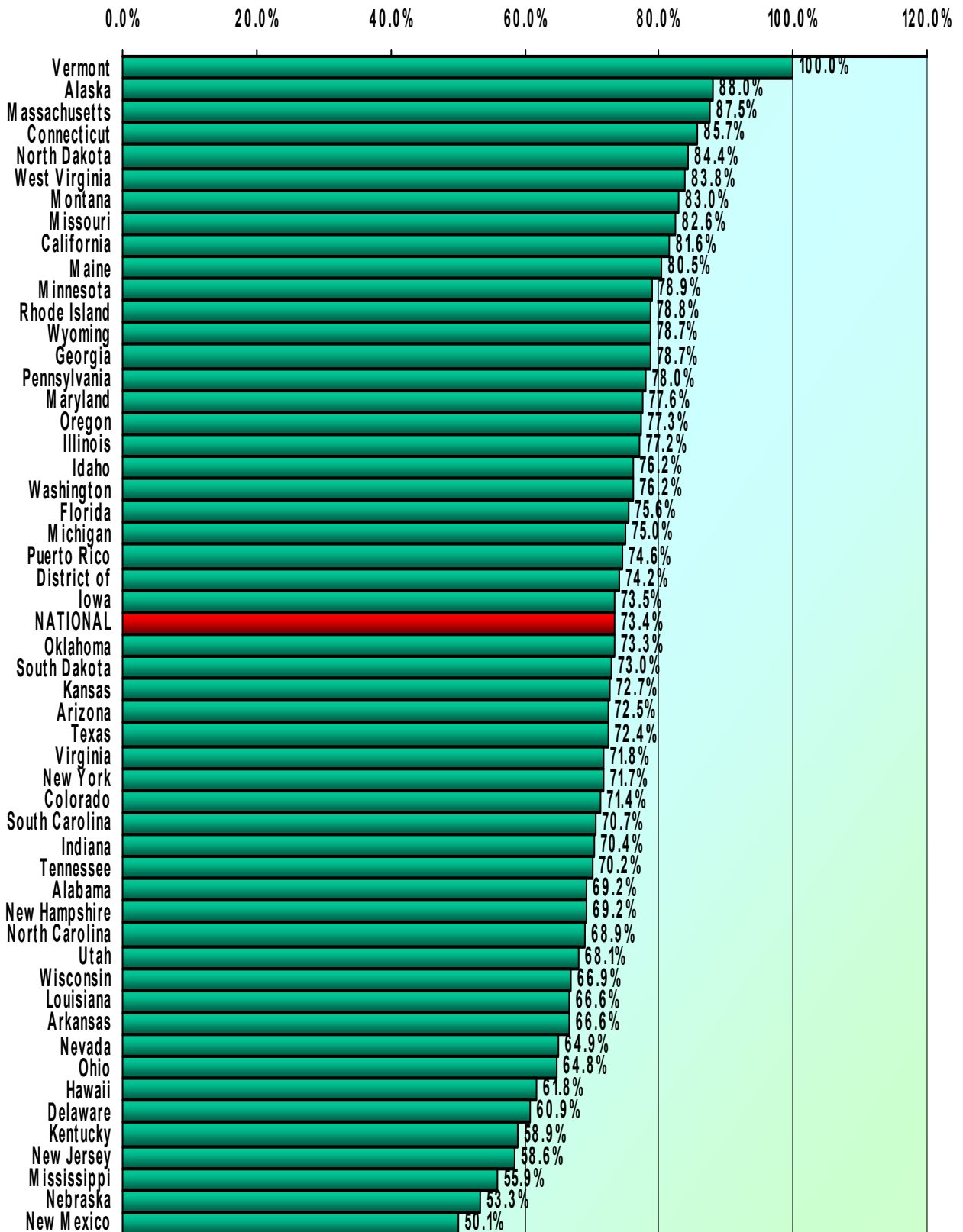
WIA Formula Programs Youth Program

State PY 2003 Expenditure Rates as of Quarter Ending 6/30/04



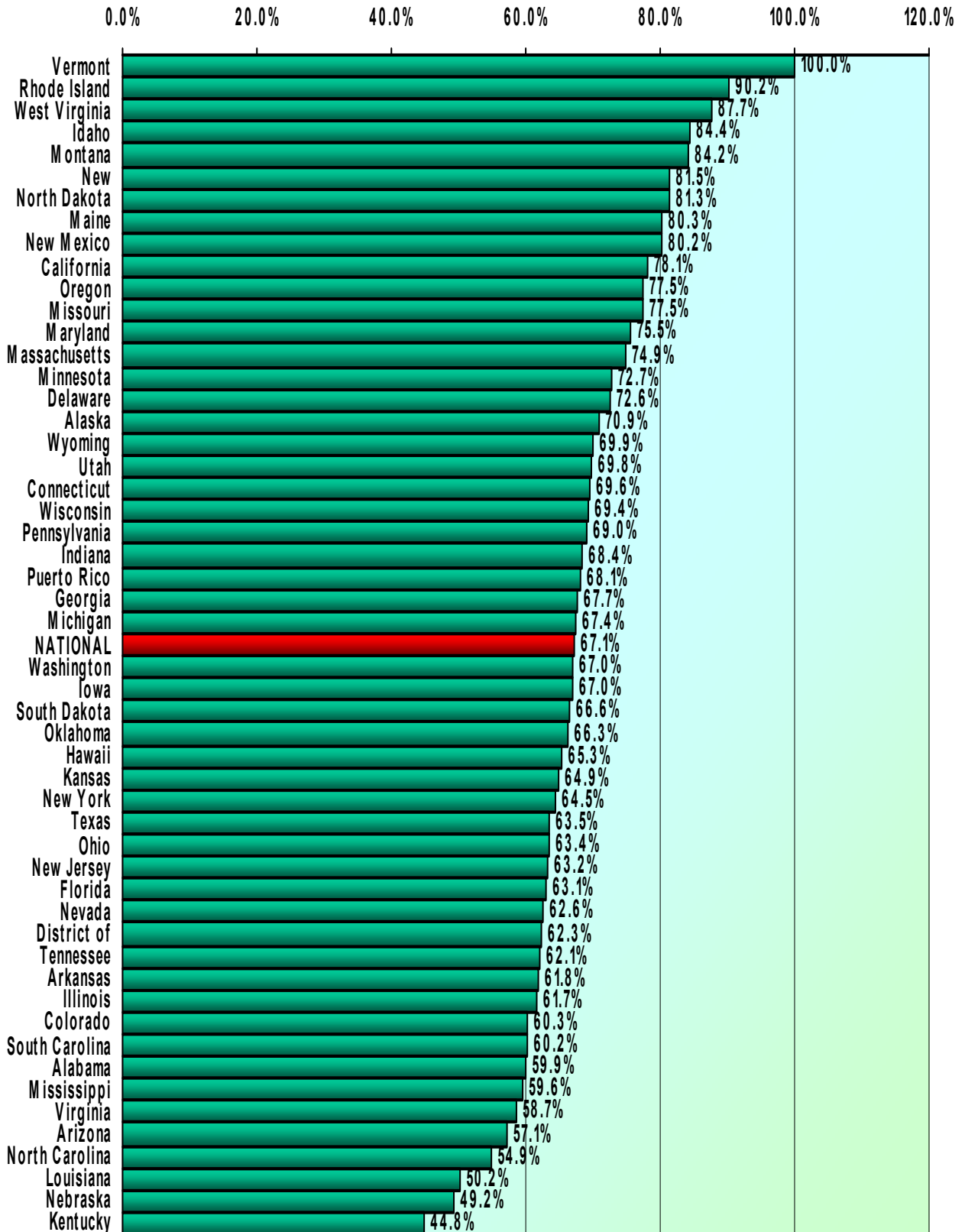
WIA Formula Programs Adults Program

State PY 2003 Expenditure Rates as of Quarter Ending 6/30/04



WIA Formula Programs Dislocated Workers Program

State PY 2003 Expenditure Rates as of Quarter Ending 6/30/04

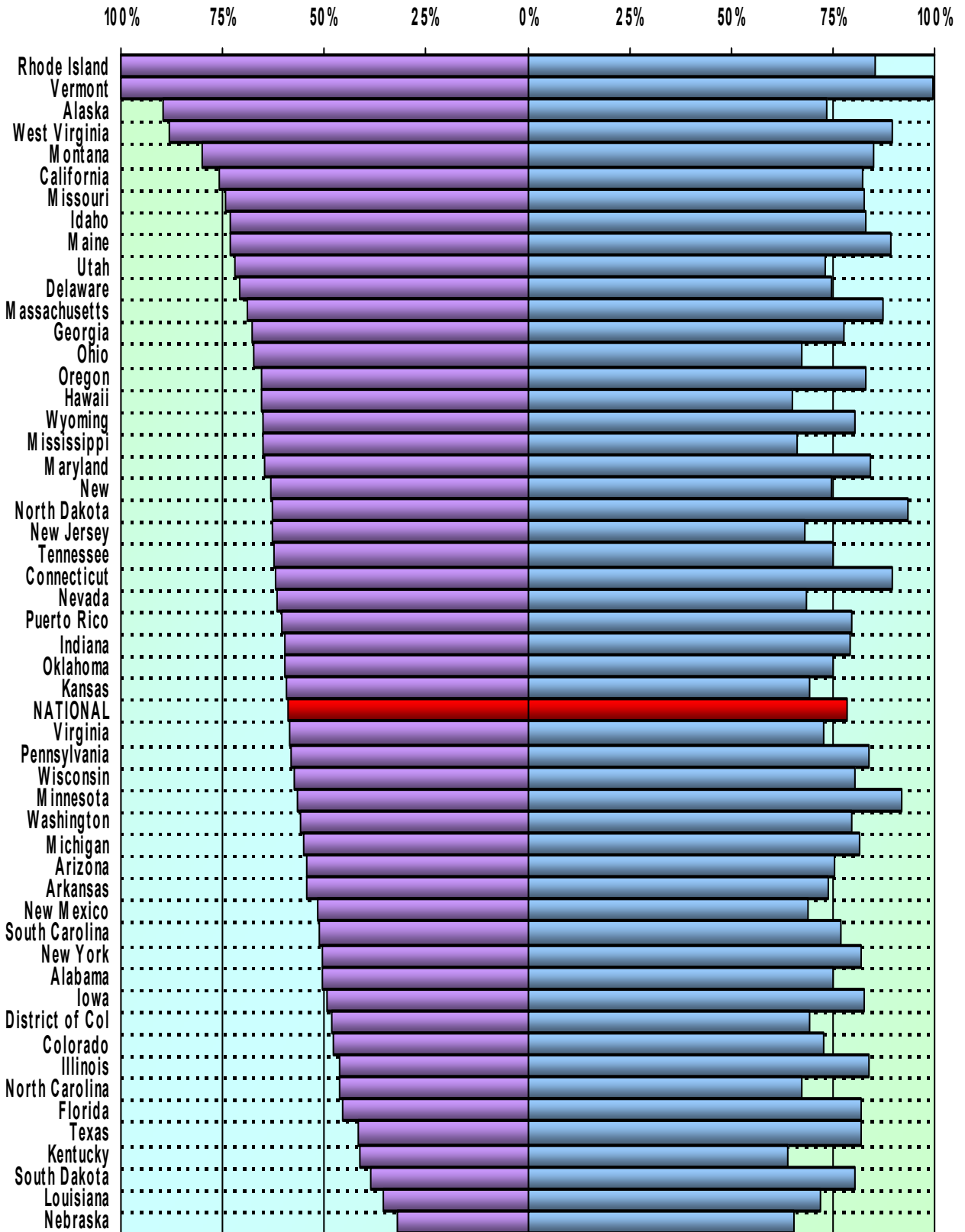


WIA Formula Programs Combined

PY 2003 Expenditure Rate as of Quarter Ending 6/30/04

State Level Activities

Local Level Activities



U. S. Department of Labor
Employment and Training Administration
State Formula Spending for Program Year 2003 as of 6/30/04 Reports (as of 9/9/04)
WIA Youth, Adults and Dislocated Workers Programs Combined

State	Unexpended Carry-In To PY 2003	PY 2003 Availability				Total Available 7/1/03-6/30/04*	Expenditures 7/1/03-6/30/04 *	Expenditures as % of Total Available	Unexpended Balance 6/30/04*	Unexpended Carry-Out To PY 2004
		PY 2003 Allotment 07/01/03	FY 2004 Allotment 10/01/03	Total PY 2003 Availability	Total Available					
Total	\$1,405,153,223	\$1,467,114,876	\$1,546,636,214	\$3,013,751,090	\$4,418,904,313	\$3,221,451,102	72.9%	\$1,197,453,211	\$1,178,444,388	
Alabama	36,963,823	25,387,837	26,929,208	52,317,045	89,280,868	61,655,793	69.1%	27,625,075	27,625,075	
Alaska	12,087,096	4,807,535	5,053,430	9,860,965	21,948,061	16,967,878	77.3%	4,980,183	4,829,711	
Arizona	18,092,528	24,297,238	25,500,926	49,798,164	67,890,692	46,819,445	69.0%	21,071,247	21,071,247	
Arkansas	14,241,361	13,199,477	12,871,225	26,070,702	40,312,063	27,701,526	68.7%	12,610,537	12,610,537	
California	211,352,798	219,218,293	234,567,465	453,785,758	665,138,556	533,245,328	80.2%	131,893,228	131,893,228	
Colorado	9,903,396	13,012,050	14,321,148	27,333,198	37,236,594	24,946,633	67.0%	12,289,961	12,289,961	
Connecticut	2,917,591	10,371,347	8,882,228	19,253,575	22,171,166	18,398,351	83.0%	3,772,815	3,772,815	
Delaware	1,709,626	3,621,573	2,960,972	6,582,545	8,292,171	6,131,662	73.9%	2,160,509	2,160,509	
District of Col	7,978,789	4,825,369	4,927,400	9,752,769	17,731,558	11,867,682	66.9%	5,863,876	5,863,876	
Florida	27,158,074	68,021,119	75,041,231	143,062,350	170,220,424	125,619,306	73.8%	44,601,118	44,579,367	
Georgia	35,564,764	26,807,518	27,558,253	54,365,771	89,930,535	67,657,883	75.2%	22,272,652	22,272,652	
Hawaii	8,547,449	6,184,871	5,871,341	12,056,212	20,603,661	13,431,595	65.2%	7,172,066	7,172,066	
Idaho	3,675,742	5,691,719	6,145,578	11,837,297	15,513,039	12,449,845	80.3%	3,063,194	3,063,194	
Illinois	68,182,424	73,869,263	81,248,281	155,117,544	223,299,968	159,765,856	71.5%	63,534,112	63,410,005	
Indiana	13,244,969	23,074,753	23,160,966	46,235,719	59,480,688	43,549,060	73.2%	15,931,628	15,143,155	
Iowa	4,988,112	5,777,037	6,226,203	12,003,240	16,991,352	12,382,108	72.9%	4,609,244	4,522,320	
Kansas	9,331,425	8,188,876	8,431,763	16,620,639	25,952,064	17,338,284	66.8%	8,613,780	8,613,780	
Kentucky	22,771,819	23,066,828	23,134,267	46,201,095	68,972,914	39,728,347	57.6%	29,244,567	29,059,931	
Louisiana	68,337,443	32,002,045	28,372,700	60,374,745	128,712,188	78,089,316	60.7%	50,622,872	49,876,207	
Maine	1,388,138	4,213,116	3,767,280	7,980,396	9,368,534	7,943,172	84.8%	1,425,362	1,425,362	
Maryland	13,078,552	17,669,337	18,959,325	36,628,662	49,707,214	39,266,067	79.0%	10,441,147	10,441,147	
Massachusetts	9,037,732	18,951,946	19,174,015	38,125,961	47,163,693	38,841,384	82.4%	8,322,309	8,315,579	
Michigan	16,048,068	61,521,386	65,520,039	127,041,425	143,089,493	109,931,084	76.8%	33,158,409	33,158,409	
Minnesota	6,904,834	13,603,670	14,620,947	28,224,617	35,129,451	28,180,999	80.2%	6,948,452	6,948,452	
Mississippi	15,284,708	20,277,051	20,764,048	41,041,099	56,325,807	37,118,601	65.9%	19,207,206	19,207,206	
Missouri	8,251,730	23,987,122	24,788,717	48,775,839	57,027,569	45,800,562	80.3%	11,227,007	11,227,007	
Montana	2,631,946	4,415,211	4,043,759	8,458,970	11,090,916	9,296,504	83.8%	1,794,412	1,794,412	
Nebraska	5,610,067	3,957,168	3,882,782	7,839,950	13,450,017	7,606,816	56.6%	5,843,201	5,843,201	
Nevada	5,148,430	9,346,530	11,181,094	20,527,624	25,676,054	17,180,280	66.9%	8,495,774	8,472,263	
New Hampshire	3,051,451	3,854,316	3,598,750	7,453,066	10,504,517	7,579,119	72.2%	2,925,398	2,925,398	
New Jersey	39,080,582	35,492,583	38,169,306	73,661,889	112,742,471	75,500,825	67.0%	37,241,646	37,241,646	
New Mexico	17,315,557	10,197,112	10,111,208	20,308,320	37,623,877	24,339,859	64.7%	13,284,018	12,827,743	
New York	153,116,277	102,490,303	113,783,079	216,273,382	369,389,659	266,463,090	72.1%	102,926,569	102,926,569	
North Carolina	30,662,667	43,863,844	52,209,892	96,073,736	126,736,403	79,587,033	62.8%	47,149,370	47,149,370	
North Dakota	923,147	3,441,797	2,462,975	5,904,772	6,827,919	5,975,188	87.5%	852,731	852,731	
Ohio	90,445,476	58,088,152	58,223,006	116,311,158	206,756,634	138,895,600	67.2%	67,861,034	67,861,034	
Oklahoma	9,083,393	10,941,230	10,381,138	21,322,368	30,405,761	21,786,350	71.7%	8,619,411	8,619,411	
Oregon	21,296,900	25,428,466	30,620,716	56,049,182	77,346,082	60,348,394	78.0%	16,997,688	16,997,688	
Pennsylvania	41,733,800	51,554,043	58,033,177	109,587,220	151,321,020	115,329,239	76.2%	35,991,781	35,891,781	
Puerto Rico	122,953,357	62,225,724	60,355,759	122,581,483	245,534,840	176,029,341	71.7%	69,505,499	60,339,034	
Rhode Island	1,636,222	3,875,717	3,658,913	7,534,630	9,170,852	8,095,007	88.3%	1,075,845	1,075,845	
South Carolina	17,334,984	22,141,847	23,678,142	45,819,989	63,154,973	43,997,762	69.7%	19,157,211	19,157,211	
South Dakota	2,744,595	3,528,899	2,701,310	6,230,209	8,974,804	6,408,698	71.4%	2,566,106	2,566,106	
Tennessee	22,067,463	26,657,875	26,667,109	53,324,984	75,392,447	54,105,104	71.8%	21,287,343	21,287,343	
Texas	71,650,664	122,809,111	125,680,455	248,489,566	320,140,230	229,483,639	71.7%	90,656,591	85,659,733	
Utah	4,099,280	6,814,091	7,515,265	14,329,356	18,428,636	13,471,437	73.1%	4,957,199	4,957,199	
Vermont	106,419	3,534,332	2,717,307	6,251,639	6,358,058	6,349,421	99.9%	8,637	8,637	
Virginia	18,794,753	20,771,226	20,756,285	41,527,511	60,322,264	41,179,042	68.3%	19,143,222	19,143,222	
Washington	37,944,904	43,427,436	49,344,565	92,772,001	130,716,905	96,401,839	73.7%	34,315,066	34,315,066	
West Virginia	23,988,920	11,943,381	11,491,405	23,434,786	47,423,706	42,220,139	89.0%	5,203,567	5,203,567	
Wisconsin	11,537,786	21,223,100	24,103,271	45,326,371	56,864,157	41,882,623	73.7%	14,981,534	12,825,578	
Wyoming	3,151,192	3,443,006	2,466,590	5,909,596	9,060,788	7,110,986	78.5%	1,949,802	1,949,802	

NOTE: Unexpended Carry-in can vary from that reported for previous quarter due to revisions in State reports.

U. S. Department of Labor
Employment and Training Administration
State Formula Spending* for Program Year 2003 as of 6/30/04 Reports (as of 9/9/04)
WIA Adult Activities Program

* Summaries by program are estimates, due to a portion of the data being reported only for combined programs.

State	Unexpended Carry-In To PY 2003	PY 2003 Availability				Total PY 2003 Availability	Total Available 7/1/03-6/30/04	Expenditures 7/1/03-6/30/04	Expenditures as % of Total Available	Unexpended Balance 6/30/04	Unexpended Carry-Out To PY 2004
		PY 2003		PY 2004							
		Allotment/NOO 07/01/03	Transfers	Allotment/NOO 10/01/03	Transfers						
Total	\$394,207,219	\$185,829,036	\$8,368,344	\$704,197,662	\$33,130,310	\$931,525,352	\$1,325,732,571	\$972,505,849	73.4%	\$353,226,722	\$347,951,346
Alabama	12,667,981	3,285,504	1,652,868	12,450,487	4,571,258	21,960,117	34,628,098	23,970,803	69.2%	10,657,295	10,657,295
Alaska	1,437,550	641,897	0	2,432,480	0	3,074,377	4,511,927	3,968,303	88.0%	543,624	543,624
Arizona	5,313,360	3,086,175	405,610	11,689,256	1,664,825	16,845,866	22,159,226	16,055,840	72.5%	6,103,386	6,103,386
Arkansas	5,407,111	1,768,662	0	6,702,384	0	8,471,046	13,878,157	9,239,567	66.6%	4,638,590	4,638,590
California	50,201,370	26,673,331	982,393	101,079,161	6,715,323	135,450,208	185,651,578	151,527,468	81.6%	34,124,110	34,124,110
Colorado	2,663,304	1,326,923	381,463	5,028,403	1,577,381	8,314,170	10,977,474	7,837,847	71.4%	3,139,627	3,139,627
Connecticut	773,040	1,072,994	0	4,066,132	0	5,139,126	5,912,166	5,069,309	85.7%	842,857	842,857
Delaware	419,540	465,778	0	1,765,074	0	2,230,852	2,650,392	1,614,878	60.9%	1,035,514	1,035,514
District of Columbia	1,847,473	632,442	209,118	2,396,653	578,844	3,817,057	5,664,530	4,205,077	74.2%	1,459,453	1,459,453
Florida	11,176,774	8,833,409	0	33,474,393	3,149,638	45,457,440	56,634,214	42,827,871	75.6%	13,806,343	13,802,750
Georgia	12,037,804	3,411,540	0	12,928,105	0	16,339,645	28,377,449	22,319,169	78.7%	6,058,280	6,058,280
Hawaii	2,966,480	867,111	0	4,153,045	0	4,153,045	7,119,525	4,402,802	61.8%	2,716,723	2,716,723
Idaho	1,101,679	726,314	0	2,752,385	0	3,478,699	4,580,378	3,490,882	76.2%	1,089,496	1,089,496
Illinois	19,009,845	9,043,315	1,412,126	34,296,836	1,045,754	44,725,277	63,735,122	49,193,324	77.2%	14,541,798	14,460,968
Indiana	4,040,968	2,490,270	0	9,436,932	350,372	12,277,574	16,318,542	11,492,896	70.4%	4,825,646	4,452,073
Iowa	1,224,901	723,160	0	2,740,430	0	3,463,590	4,688,491	3,448,033	73.5%	1,240,458	1,240,458
Kansas	2,663,382	1,085,963	80,386	4,115,282	69,382	5,351,013	8,014,395	5,829,532	72.7%	2,184,863	2,184,863
Kentucky	8,136,726	3,130,783	293,789	11,864,169	(300,000)	14,988,741	23,125,467	13,615,025	58.9%	9,510,442	9,473,010
Louisiana	16,562,021	4,278,072	489,390	16,211,845	1,045,754	22,025,061	38,587,082	25,702,684	66.6%	12,884,398	12,884,398
Maine	560,464	525,763	0	1,992,391	(34,353)	2,483,801	3,044,265	2,449,966	80.5%	594,299	594,299
Maine	3,640,097	2,315,211	465,626	8,773,544	0	11,554,381	15,194,478	11,787,384	77.6%	3,407,094	3,407,094
Massachusetts	2,665,234	1,900,773	0	7,203,018	(278,956)	8,824,835	11,490,069	10,050,384	87.5%	1,439,685	1,439,685
Michigan	6,439,968	7,777,748	1,096,874	29,473,940	1,151,331	39,499,893	45,939,861	34,445,625	75.0%	11,494,236	11,494,236
Minnesota	2,439,800	1,756,424	0	6,656,005	0	8,412,429	10,852,229	8,558,896	78.9%	2,293,333	2,293,333
Mississippi	4,148,285	2,563,014	619,062	9,712,595	272,664	13,167,335	17,315,620	9,672,730	55.9%	7,642,890	7,642,890
Missouri	1,204,095	3,170,299	45,017	12,013,914	128,501	15,357,731	16,561,826	13,683,764	82.6%	2,878,062	2,878,062
Montana	943,771	664,103	0	2,516,633	0	3,180,736	4,124,507	3,424,110	83.0%	700,397	700,397
Nebraska	1,564,378	465,778	0	1,765,074	216,950	2,447,802	4,012,180	2,138,814	53.3%	1,873,366	1,873,366
Nevada	1,668,492	1,138,865	0	4,315,754	2,236,438	7,691,057	9,359,549	6,070,962	64.9%	3,288,587	3,277,822
New Hampshire	636,993	465,778	0	1,765,074	(200,000)	2,030,852	2,667,845	1,846,228	69.2%	821,617	821,617
New Jersey	9,930,997	4,252,437	(205,440)	16,114,699	0	20,161,696	30,092,693	17,635,974	58.6%	12,456,719	12,456,719
New Mexico	5,975,124	1,348,621	0	5,111,076	500,000	6,959,697	12,934,821	6,477,940	50.1%	6,456,881	6,456,881
New York	39,565,159	13,473,189	0	51,056,937	2,603,359	67,133,485	106,698,644	76,501,192	71.7%	30,197,452	30,197,452
North Carolina	7,893,799	5,367,562	54,004	20,340,489	(394,285)	25,367,770	33,261,569	22,932,994	68.9%	10,328,575	10,328,575
North Dakota	365,874	465,778	0	1,765,074	0	2,230,852	2,596,726	2,190,600	84.4%	406,126	406,126
Ohio	28,997,670	7,772,343	985	29,453,458	(201,301)	37,025,485	66,023,155	42,787,960	64.8%	23,235,195	23,235,195
Oklahoma	2,718,750	1,510,051	21,821	5,722,371	(191,344)	7,062,899	9,781,649	7,166,170	73.3%	2,615,479	2,615,479
Oregon	4,976,326	3,096,350	0	11,733,683	448,000	15,278,033	20,254,359	15,665,160	77.3%	4,589,199	4,589,199
Pennsylvania	11,407,310	6,613,722	0	25,062,843	394,145	32,070,710	43,478,020	33,932,723	78.0%	9,545,297	9,497,013
Puerto Rico	24,483,306	8,699,356	0	32,966,393	2,563,064	44,228,813	68,712,119	51,264,879	74.6%	17,447,240	17,447,240
Rhode Island	460,640	465,778	0	1,765,074	0	2,230,852	2,691,492	2,119,911	78.8%	571,581	571,581
South Carolina	6,186,979	2,830,763	124,253	10,727,236	526,415	14,208,667	20,395,646	14,423,091	70.7%	5,972,555	5,972,555
South Dakota	584,445	465,778	0	1,765,074	0	2,230,852	2,815,297	2,053,770	73.0%	761,527	761,527
Tennessee	6,705,996	3,606,001	58,999	13,665,016	(17,714)	17,312,302	24,018,298	16,851,059	70.2%	7,167,239	7,167,239
Texas	31,178,011	15,478,205	180,000	58,654,989	3,271,602	77,584,796	108,762,807	78,798,426	72.4%	29,964,381	25,989,705
Utah	1,208,604	733,998	0	2,781,503	35,607	3,551,108	4,759,712	3,243,045	68.1%	1,516,667	1,516,667
Vermont	(6,238)	465,778	0	1,765,074	0	2,230,852	2,224,614	2,224,614	100.0%	0	0
Virginia	4,978,641	2,764,986	0	10,477,972	(62,590)	13,180,368	18,159,009	13,039,287	71.8%	5,119,722	5,119,722
Washington	9,506,652	5,373,576	0	20,363,280	740,000	26,476,856	35,983,508	27,420,644	76.2%	8,562,864	8,562,864
West Virginia	6,740,611	1,681,496	0	6,372,066	0	8,053,562	14,794,173	12,396,478	83.8%	2,397,695	2,397,695
Wisconsin	3,718,889	2,610,091	0	9,890,998	0	12,501,089	16,219,978	10,844,732	66.9%	5,375,246	4,628,223
Wyoming	1,066,788	465,778	0	1,765,074	0	2,230,852	3,297,640	2,595,027	78.7%	702,613	702,613

NOTE: Unexpended Carry-in can vary from that reported for previous quarter due to revisions in State reports.

U. S. Department of Labor
Employment and Training Administration
State Formula Spending* for Program Year 2003 as of 6/30/04 Reports (as of 9/9/04)
WIA Youth Activities Program

* Summaries by program are estimates, due to a portion of the data being reported only for combined programs.

State	Unexpended Carry-In To PY 2003	PY 2003 Availability		Expenditures 4/1/03-6/30/04	Expenditures as % of Total Available	Unexpended Balance 6/30/04	Unexpended Carry-Out To PY 2004
		PY 2003 Allotment/NOO 04/01/03	Total Available 4/1/03-6/30/04				
Total	\$392,128,857	\$974,334,873	\$1,366,463,730	\$1,089,662,510	79.7%	\$276,801,220	\$276,071,871
Alabama	6,634,389	16,855,132	23,489,521	19,020,455	81.0%	4,469,066	4,469,066
Alaska	2,718,488	3,222,244	5,940,732	4,850,724	81.7%	1,090,008	1,090,008
Arizona	5,740,417	16,193,524	21,933,941	17,170,895	78.3%	4,763,046	4,763,046
Arkansas	5,382,147	9,192,466	14,574,613	11,136,951	76.4%	3,437,662	3,437,662
California	62,425,894	144,177,321	206,603,215	168,491,026	81.6%	38,112,189	38,112,189
Colorado	3,397,387	8,308,353	11,705,740	8,340,320	71.2%	3,365,420	3,365,420
Connecticut	1,161,935	7,550,224	8,712,159	8,077,315	92.7%	634,844	634,844
Delaware	787,314	2,723,213	3,510,527	2,969,079	84.6%	541,448	541,448
District of Columbia	2,194,366	3,281,736	5,476,102	3,557,444	65.0%	1,918,658	1,918,658
Florida	6,025,341	44,092,006	50,117,347	42,713,041	85.2%	7,404,306	7,388,908
Georgia	9,901,951	18,088,873	27,990,824	22,602,150	80.7%	5,388,674	5,388,674
Hawaii	2,744,652	4,380,988	7,125,640	4,877,290	68.4%	2,248,350	2,248,350
Idaho	1,236,832	3,736,937	4,973,769	3,927,148	79.0%	1,046,621	1,046,621
Illinois	13,623,030	47,822,181	61,445,211	50,047,184	81.5%	11,398,027	11,398,027
Indiana	4,310,971	15,599,164	19,910,135	16,153,857	81.1%	3,756,278	3,756,278
Iowa	1,431,678	3,789,782	5,221,460	4,190,586	80.3%	1,030,874	1,030,874
Kansas	3,957,117	5,538,059	9,495,176	6,026,541	63.5%	3,468,635	3,468,635
Kentucky	7,887,019	15,843,538	23,730,557	16,201,607	68.3%	7,528,950	7,453,341
Louisiana	17,683,084	21,820,346	39,503,430	26,965,043	68.3%	12,538,387	12,538,387
Maine	159,824	3,044,815	3,204,639	2,988,965	93.3%	215,674	215,674
Maryland	2,753,311	11,663,795	14,417,106	12,301,662	85.3%	2,115,444	2,115,444
Massachusetts	3,451,677	12,704,666	16,156,343	14,170,278	87.7%	1,986,065	1,986,065
Michigan	4,495,157	40,644,085	45,139,242	40,433,189	89.6%	4,706,053	4,706,053
Minnesota	409,041	8,959,275	9,368,316	8,779,037	93.7%	589,279	589,279
Mississippi	3,620,105	13,711,722	17,331,827	14,531,066	83.8%	2,800,761	2,800,761
Missouri	2,967,700	16,181,718	19,149,418	15,595,339	81.4%	3,554,079	3,554,079
Montana	850,922	3,198,764	4,049,686	3,417,121	84.4%	632,565	632,565
Nebraska	1,861,821	2,723,213	4,585,034	3,078,514	67.1%	1,506,520	1,506,520
Nevada	1,428,373	5,714,424	7,142,797	5,365,857	75.1%	1,776,940	1,776,940
New Hampshire	1,905,057	2,723,213	4,628,270	3,118,431	67.4%	1,509,839	1,509,839
New Jersey	12,160,650	23,237,116	35,397,766	27,997,928	79.1%	7,399,838	7,399,838
New Mexico	4,736,109	7,047,296	11,783,405	7,514,356	63.8%	4,269,049	3,812,774
New York	59,183,513	66,245,602	125,429,115	101,362,867	80.8%	24,066,248	24,066,248
North Carolina	11,494,816	26,917,963	38,412,779	26,426,479	68.8%	11,986,300	11,986,300
North Dakota	342,336	2,723,213	3,065,549	2,836,523	92.5%	229,026	229,026
Ohio	34,955,099	39,875,453	74,830,552	54,300,482	72.6%	20,530,070	20,530,070
Oklahoma	3,431,455	7,741,715	11,173,170	8,352,019	74.8%	2,821,151	2,821,151
Oregon	2,514,204	15,487,173	18,001,377	14,370,517	79.8%	3,630,860	3,630,860
Pennsylvania	12,921,907	32,978,730	45,900,637	38,631,487	84.2%	7,269,150	7,269,150
Puerto Rico	13,201,647	43,696,441	56,898,088	43,132,793	75.8%	13,765,295	13,765,295
Rhode Island	929,261	2,723,213	3,652,474	3,425,037	93.8%	227,437	227,437
South Carolina	6,057,216	14,607,125	20,664,341	16,274,205	78.8%	4,390,136	4,390,136
South Dakota	1,908,528	2,723,213	4,631,741	3,338,031	72.1%	1,293,710	1,293,710
Tennessee	8,459,662	18,331,645	26,791,307	21,994,446	82.1%	4,796,861	4,796,861
Texas	15,699,113	82,983,454	98,682,567	79,149,135	80.2%	19,533,432	19,533,432
Utah	1,032,889	4,360,660	5,393,549	4,451,671	82.5%	941,878	941,878
Vermont	106,419	2,723,213	2,829,632	2,820,995	99.7%	8,637	8,637
Virginia	4,979,083	14,274,975	19,254,058	14,687,950	76.3%	4,566,108	4,566,108
Washington	8,380,563	27,578,685	35,959,248	29,576,041	82.2%	6,383,207	6,383,207
West Virginia	1,457,954	8,415,446	9,873,400	9,873,400	100.0%	0	0
Wisconsin	3,630,760	13,453,552	17,084,312	14,678,529	85.9%	2,405,783	2,223,716
Wyoming	1,398,673	2,723,213	4,121,886	3,369,504	81.7%	752,382	752,382

NOTE: Unexpended Carry-in can vary from that reported for previous quarter due to revisions in State reports.

U. S. Department of Labor
Employment and Training Administration
State Formula Spending* for Program Year 2003 as of 6/30/04 Reports (as of 9/9/04)
WIA Dislocated Workers Program

* Summaries by program are estimates, due to a portion of the data being reported only for combined programs.

State	Unexpended Carry-In To PY 2003	PY 2003 Availability						Total Available 7/1/03-6/30/04	Expenditures 7/1/03-6/30/04	Expenditures as % of Total Available	Unexpended Carry-Out To PY 2004
		PY 2003		FY 2004		Total PY 2003 Availability					
		Allotment/NOO 07/01/03	Transfers	Allotment/NOO 10/01/03	Transfers						
Total	\$618,817,147	\$306,950,967	(\$8,368,344)	\$842,438,552	(\$33,130,310)	\$1,107,890,865	\$1,726,708,012	\$1,159,282,743	67.1%	\$554,421,171	
Alabama	17,661,453	5,247,201	(1,652,868)	14,478,721	(4,571,258)	13,501,796	31,163,249	18,664,535	59.9%	12,498,714	
Alaska	7,931,058	943,394	0	2,620,950	0	3,564,344	11,495,402	8,148,851	70.9%	3,196,079	
Arizona	7,038,751	5,017,539	(405,610)	13,811,670	(1,664,825)	16,758,774	23,797,525	13,592,710	57.1%	10,204,815	
Arkansas	3,452,103	2,238,349	0	6,168,841	0	8,407,190	11,859,293	7,325,008	61.8%	4,534,285	
California	98,725,534	48,367,641	(982,393)	133,488,304	(6,715,323)	174,158,229	272,883,763	213,226,834	78.1%	59,656,929	
Colorado	3,842,705	3,376,774	(381,463)	9,292,745	(1,577,381)	10,710,675	14,553,380	8,768,466	60.3%	5,784,914	
Connecticut	982,616	1,748,129	0	4,816,096	0	6,564,225	7,546,841	5,251,727	69.6%	2,295,114	
Delaware	502,772	432,582	0	1,195,898	0	1,628,480	2,131,252	1,547,705	72.6%	583,547	
District of Columbia	3,936,950	911,191	(209,118)	2,530,747	(578,844)	2,653,976	6,590,926	4,105,161	62.3%	2,485,765	
Florida	9,955,959	15,095,704	0	41,566,838	(3,149,638)	53,512,904	63,468,863	40,078,394	63.1%	23,387,709	
Georgia	13,625,009	5,307,105	0	14,630,148	0	19,937,253	33,562,262	22,736,564	67.7%	10,825,698	
Hawaii	2,836,317	936,772	0	2,585,407	0	3,522,179	6,358,496	4,151,503	65.3%	2,206,993	
Idaho	1,337,231	1,228,468	0	3,393,193	0	4,621,661	5,958,892	5,031,815	84.4%	927,077	
Illinois	35,549,549	17,003,767	(1,412,126)	46,978,445	0	62,570,086	98,119,635	60,525,348	61.7%	37,551,010	
Indiana	4,893,030	4,985,319	0	13,724,034	(350,372)	18,358,981	23,252,011	15,902,307	68.4%	6,934,804	
Iowa	2,331,533	1,264,095	0	3,485,773	0	4,749,868	7,081,401	4,743,489	67.0%	2,250,988	
Kansas	2,710,926	1,564,854	(80,386)	4,316,481	(69,382)	5,731,567	8,442,493	5,482,211	64.9%	2,960,282	
Kentucky	6,748,074	4,092,507	(293,789)	11,270,098	300,000	15,368,816	22,116,890	9,911,715	44.8%	12,132,780	
Louisiana	34,092,338	5,903,627	(489,390)	12,160,855	(1,045,754)	16,529,338	50,621,676	25,421,589	50.2%	24,453,422	
Maine	667,850	642,538	0	1,774,889	34,353	2,451,780	3,119,630	2,504,241	80.3%	615,389	
Maryland	6,685,144	3,690,331	(465,626)	10,185,781	0	13,410,486	20,095,630	15,177,021	75.5%	4,918,609	
Massachusetts	2,920,821	4,346,507	0	11,970,997	278,956	16,596,460	19,517,281	14,620,722	74.9%	4,889,829	
Michigan	5,112,943	13,099,553	(1,096,874)	36,046,099	(1,151,331)	46,897,447	52,010,390	35,052,270	67.4%	16,958,120	
Minnesota	4,055,993	2,887,971	0	7,964,942	0	10,852,913	14,908,906	10,843,066	72.7%	4,065,840	
Mississippi	7,516,318	4,002,315	(619,062)	11,051,453	(272,664)	14,162,042	21,678,360	12,914,805	59.6%	8,763,555	
Missouri	4,079,935	4,635,105	(45,017)	12,774,803	(128,501)	17,236,390	21,316,325	16,521,459	77.5%	4,794,866	
Montana	837,253	552,344	0	1,527,126	0	2,079,470	2,916,723	2,455,273	84.2%	461,450	
Nebraska	2,183,868	768,177	0	2,117,708	(216,950)	2,668,935	4,852,803	2,389,488	49.2%	2,463,310	
Nevada	2,051,565	2,493,241	0	6,865,340	(2,236,438)	7,122,143	9,173,708	5,743,461	62.6%	3,417,501	
New Hampshire	509,401	665,325	0	1,833,676	200,000	2,699,001	3,208,402	2,614,460	81.5%	593,942	
New Jersey	16,988,935	8,003,030	205,440	22,054,607	0	30,263,077	47,252,012	29,866,923	63.2%	17,385,089	
New Mexico	6,604,324	1,801,195	0	5,000,132	(500,000)	6,301,327	12,905,651	10,347,563	80.2%	2,558,088	
New York	54,367,605	22,771,512	0	62,726,142	(2,603,359)	82,894,295	137,261,900	88,599,031	64.5%	48,662,869	
North Carolina	11,274,052	11,578,319	(54,004)	31,869,403	394,285	43,788,003	55,062,055	30,227,560	54.9%	24,834,495	
North Dakota	214,937	252,806	0	697,901	0	950,707	1,165,644	948,065	81.3%	217,579	
Ohio	26,492,707	10,440,356	(985)	28,769,548	201,301	39,410,220	65,902,927	41,807,158	63.4%	24,095,769	
Oklahoma	2,933,188	1,689,464	(21,821)	4,658,767	191,344	6,517,754	9,450,942	6,268,161	66.3%	3,182,781	
Oregon	13,806,370	6,844,943	0	18,887,033	(448,000)	25,283,976	39,090,346	30,312,717	77.5%	8,777,629	
Pennsylvania	17,404,583	11,961,591	0	32,970,334	(394,145)	44,537,780	61,942,363	42,765,029	69.0%	19,125,618	
Puerto Rico	85,268,404	9,829,927	0	27,389,366	(2,563,064)	34,656,229	119,924,633	81,631,669	68.1%	29,126,499	
Rhode Island	246,321	686,726	0	1,893,839	0	2,580,565	2,826,886	2,550,059	90.2%	276,827	
South Carolina	5,090,789	4,703,959	(124,253)	12,950,906	(526,415)	17,004,197	22,094,986	13,300,466	60.2%	8,794,520	
South Dakota	251,622	339,908	0	936,236	0	1,276,144	1,527,766	1,016,897	66.6%	510,869	
Tennessee	6,901,805	4,720,229	(58,999)	13,002,093	17,714	17,681,037	24,582,842	15,259,599	62.1%	9,323,243	
Texas	24,773,540	24,347,452	(180,000)	67,025,466	(3,271,602)	87,921,316	112,694,856	71,536,078	63.5%	40,136,596	
Utah	1,857,787	1,719,433	0	4,733,762	(35,607)	6,417,588	8,275,375	5,776,721	69.8%	2,498,654	
Vermont	6,238	345,341	0	952,233	0	1,297,574	1,303,812	1,303,812	100.0%	0	
Virginia	8,837,029	3,731,265	0	10,278,313	62,590	14,072,168	22,909,197	13,451,805	58.7%	9,457,392	
Washington	20,057,689	10,475,175	0	28,981,285	(740,000)	38,716,460	58,774,149	39,405,154	67.0%	19,368,995	
West Virginia	15,790,355	1,846,439	0	5,119,339	0	6,965,778	22,756,133	19,950,261	87.7%	2,805,872	
Wisconsin	4,188,137	5,159,457	0	14,212,273	0	19,371,730	23,559,867	16,359,362	69.4%	5,973,639	
Wyoming	685,731	254,015	0	701,516	0	955,531	1,641,262	1,146,455	69.9%	494,807	

NOTE: Unexpended Carry-in can vary from that reported for previous quarter due to revisions in State reports

**WIA State Net Outlays by Quarter, from State SF-269 Financial Reports
Summary by Program and Fund Year, as of 6/30/04**

(No adjustment for negative net outlays)

H:\MISC\State WIA Spending Reports\Internal_Tables\040630\QtrPgmSum063004.xls\Spending as of 63004 (2)
9/15/2004 11:15

Program	Year	6/30/02	9/30/02	12/31/2002	3/31/03	6/30/03	9/30/03	12/31/03	3/31/04	6/30/04
Adults	PY 1998	-	-	-	-	-	-	-	-	-
	PY 1999	25,070,656	-	-	-	-	-	-	-	-
	PY 2000	4,087,493	2,219,776	1,898,866	2,124,738	1,727,233	-	-	-	-
	FY 2001	65,558,084	7,857,106	7,887,457	20,952,819	21,909,083	-	-	-	-
	PY 2001	39,428,167	13,056,286	7,142,536	5,160,338	2,732,981	2,110,349	236,171	2,349,441	1,917,786
	FY 2002	188,754,995	129,969,712	102,875,259	46,504,352	51,750,676	14,516,849	12,860,158	8,072,520	14,478,081
	PY 2002	0	73,180,359	90,028,938	34,388,165	20,904,407	9,987,606	5,785,118	3,862,538	6,486,933
	FY 2003			82,766,613	156,867,488	206,002,017	107,013,067	63,873,921	42,309,711	51,186,060
	PY 2003						71,856,257	65,334,177	24,135,937	13,432,064
	FY 2004							93,243,877	155,934,159	201,523,069
	All Years	322,899,395	226,283,239	292,599,669	265,997,900	305,026,397	205,484,128	241,333,422	236,664,306	289,023,993
Youth *	PY 1998	-	-	-	-	-	-	-	-	-
	PY 1999	19,565,994	-	-	-	-	-	-	-	-
	PY 2000	61,220,881	9,904,942	10,776,265	9,292,127	7,598,321	-	-	-	-
	FY 2001	-	-	-	-	-	-	-	-	-
	PY 2001	252,455,434	168,159,209	107,512,867	61,306,143	49,503,519	13,936,415	5,839,696	8,612,880	9,155,726
	FY 2002	0	0	0	0	0	0	0	0	0
	PY 2002	16,723,154	145,686,344	158,893,678	185,805,778	242,275,544	155,262,059	76,437,626	52,408,753	48,537,008
	FY 2003	0	0	0	0	0	0	0	0	0
	PY 2003					10,023,221	149,326,052	151,585,078	184,497,584	224,040,412
	FY 2004								0	0
	All Years	349,965,463	323,750,495	277,182,810	256,404,048	309,400,605	318,524,526	233,862,400	245,519,217	281,733,146
Dis Wkrs	PY 1998	-	-	-	-	-	-	-	-	-
	PY 1999	54,075,645	-	-	-	-	-	-	-	-
	PY 2000	4,679,639	11,411,904	9,373,113	13,730,989	7,092,999	-	-	-	-
	FY 2001	109,833,628	24,744,294	23,198,047	41,898,749	55,238,764	-	-	-	-
	PY 2001	4,613,682	25,853,973	13,257,355	6,934,884	5,612,596	2,236,865	2,953,570	1,222,203	2,571,773
	FY 2002	189,946,772	107,565,547	104,235,547	77,988,050	77,130,608	28,890,268	28,066,130	21,460,801	38,758,744
	PY 2002	0	95,575,203	119,204,174	57,358,425	41,584,392	20,153,878	8,999,326	8,829,994	11,332,273
	FY 2003			52,655,256	128,170,739	202,272,461	121,046,095	73,723,903	62,693,215	69,725,350
	PY 2003						74,763,055	98,696,114	50,371,249	27,073,343
	FY 2004							61,188,760	142,606,309	201,919,525
	All Years	363,149,366	265,150,921	321,923,492	326,081,836	388,931,820	247,090,161	273,627,803	287,183,771	351,381,008
All Pgms	PY 1998	-	-	-	-	-	-	-	-	-
	PY 1999	98,712,295	-	-	-	-	-	-	-	-
	PY 2000	69,988,013	23,536,622	22,048,244	25,147,854	16,418,553	-	-	-	-
	FY 2001	175,391,712	32,601,400	31,085,504	62,851,568	77,147,847	-	-	-	-
	PY 2001	296,497,283	207,069,468	127,912,758	73,401,365	57,849,096	18,283,629	9,029,437	12,184,524	13,645,285
	FY 2002	378,701,767	237,535,259	207,110,806	124,492,402	128,881,284	43,407,117	40,926,288	29,533,321	53,236,825
	PY 2002	16,723,154	314,441,906	368,126,790	277,552,368	304,764,343	185,403,543	91,222,070	65,101,285	66,356,214
	FY 2003	0	0	135,421,869	285,038,227	408,274,478	228,059,162	137,597,824	105,002,926	120,911,410
	PY 2003						295,945,364	315,615,369	259,004,770	264,545,819
	FY 2004						0	154,432,637	298,540,468	403,442,594
	All Years	1,036,014,224	815,184,655	891,705,971	848,483,784	993,335,601	771,098,815	748,823,625	769,367,294	922,138,147

* For program year spending analysis purposes elsewhere, the first quarter of spending for a fund year will be combined with the subsequent 9/30 quarter.

U. S. Department of Labor
Employment and Training Administration
State WIA Formula Spending for Program Year 2003 as of 6/30/04 Reports
State/Local Level Expenditure Rates

Reg	State	Total	State	Local
	NATIONAL	72.9%	58.9%	78.5%
3	Alabama	69.1%	50.3%	75.2%
6	Alaska	77.3%	89.7%	73.5%
6	Arizona	69.0%	54.3%	75.4%
4	Arkansas	68.7%	54.2%	73.8%
6	California	80.2%	75.9%	82.3%
4	Colorado	67.0%	47.9%	72.7%
1	Connecticut	83.0%	61.9%	89.8%
2	Delaware	73.9%	70.7%	74.6%
2	District of Columbia	66.9%	48.1%	69.1%
3	Florida	73.8%	45.5%	81.9%
3	Georgia	75.2%	67.8%	77.8%
6	Hawaii	65.2%	65.5%	65.1%
6	Idaho	80.3%	73.2%	83.0%
5	Illinois	71.5%	46.3%	84.0%
5	Indiana	73.2%	59.7%	79.4%
5	Iowa	72.9%	49.3%	82.8%
5	Kansas	66.8%	59.4%	69.2%
3	Kentucky	57.6%	41.3%	64.0%
4	Louisiana	60.7%	35.7%	71.9%
1	Maine	84.8%	73.1%	89.1%
2	Maryland	79.0%	64.7%	84.2%
1	Massachusetts	82.4%	69.0%	87.4%
5	Michigan	76.8%	55.1%	81.6%
5	Minnesota	80.2%	56.6%	91.9%
3	Mississippi	65.9%	65.1%	66.1%
5	Missouri	80.3%	74.4%	82.6%
4	Montana	83.8%	80.1%	85.0%
5	Nebraska	56.6%	32.1%	65.6%
6	Nevada	66.9%	61.8%	68.5%
1	New Hampshire	72.2%	63.3%	74.7%
1	New Jersey	67.0%	62.7%	68.3%
4	New Mexico	64.7%	51.5%	68.8%
1	New York	72.1%	50.6%	81.9%
3	North Carolina	62.8%	46.1%	67.3%
4	North Dakota	87.5%	62.7%	93.3%
5	Ohio	67.2%	67.2%	67.2%
4	Oklahoma	71.7%	59.6%	75.1%
6	Oregon	78.0%	65.6%	83.0%
2	Pennsylvania	76.2%	58.2%	84.0%
1	Puerto Rico	71.7%	60.6%	79.5%
1	Rhode Island	88.3%	100.0%	85.4%
3	South Carolina	69.7%	51.2%	77.0%
4	South Dakota	71.4%	38.6%	80.6%
3	Tennessee	71.8%	62.3%	74.9%
4	Texas	71.7%	41.5%	82.0%
4	Utah	73.1%	72.0%	73.3%
1	Vermont	99.9%	100.0%	99.8%
2	Virginia	68.3%	58.6%	72.6%
6	Washington	73.7%	55.9%	79.8%
2	West Virginia	89.0%	88.1%	89.6%
5	Wisconsin	73.7%	57.2%	80.3%
4	Wyoming	78.5%	65.1%	80.6%

U. S. Department of Labor
Employment and Training Administration
State WIA Formula Spending for Program Year 2003 as of 6/30/04 Reports
State Level Spending

Reg	State	Unexpended Carry-In To PY 2003	New PY 2003 Availability			Total Available	Expenditures During PY 2003	Expenditures as % of Total Available	Unexpended Balance As of 6/30/04	Unexpended PY01/FY02	Unexpended Carry-Out To PY 2004
			PY 2003	FY 2004	Total						
	Total	\$612,490,144	\$277,077,360	\$370,014,738	\$647,092,098	\$1,259,562,242	\$741,581,272	58.9%	\$518,000,975	\$18,406,540	\$499,594,435
3	Alabama	11,262,139	4,595,256	6,187,942	10,783,198	22,045,337	11,097,123	50.3%	10,948,214	-	10,948,214
6	Alaska	3,687,176	721,131	762,484	1,483,615	5,170,791	4,638,276	89.7%	532,515	75,472	457,043
6	Arizona	11,142,642	4,416,314	5,265,254	9,681,568	20,824,210	11,311,585	54.3%	9,512,625	-	9,512,625
4	Arkansas	4,526,436	2,539,509	3,472,893	6,012,402	10,538,838	5,716,817	54.2%	4,822,021	-	4,822,021
6	California	105,561,663	44,974,653	68,557,195	113,531,848	219,093,511	166,269,386	75.9%	52,824,125	-	52,824,125
4	Colorado	2,709,659	2,145,241	3,650,118	5,795,359	8,505,018	4,070,797	47.9%	4,434,221	-	4,434,221
1	Connecticut	862,529	1,992,734	2,536,356	4,529,090	5,391,619	3,336,734	61.9%	2,054,885	-	2,054,885
2	Delaware	743,295	372,195	319,627	691,822	1,435,117	1,014,711	70.7%	420,406	-	420,406
2	District of Columbia	341,130	723,807	789,109	1,512,916	1,854,046	891,358	48.1%	962,688	-	962,688
3	Florida	11,190,402	13,977,093	12,647,894	26,624,987	37,815,389	17,206,094	45.5%	20,609,295	-	20,609,295
3	Georgia	9,947,693	5,347,904	7,674,187	13,022,091	22,969,784	15,562,939	67.8%	7,406,845	-	7,406,845
6	Hawaii	2,430,971	950,120	896,764	1,846,884	4,277,855	2,800,707	65.5%	1,477,148	-	1,477,148
6	Idaho	1,641,627	1,160,873	1,596,873	2,757,746	4,399,373	3,222,412	73.2%	1,176,961	-	1,176,961
5	Illinois	34,491,563	15,331,331	23,807,585	39,138,916	73,630,479	34,093,683	46.3%	39,536,796	124,106	39,412,690
5	Indiana	7,228,313	4,707,541	6,792,206	11,499,747	18,728,060	11,187,009	59.7%	7,541,051	788,473	6,752,578
5	Iowa	2,551,583	1,056,169	1,423,636	2,479,805	5,031,388	2,478,991	49.3%	2,552,397	86,912	2,465,485
5	Kansas	2,466,534	1,619,544	2,335,224	3,954,768	6,421,302	3,816,529	59.4%	2,604,773	-	2,604,773
3	Kentucky	8,618,041	4,483,151	6,287,664	10,770,815	19,388,856	8,008,063	41.3%	11,380,793	184,636	11,196,157
4	Louisiana	28,957,504	6,276,214	4,731,450	11,007,664	39,965,168	14,252,394	35.7%	25,712,774	746,665	24,966,109
1	Maine	709,274	792,602	1,008,814	1,801,416	2,510,690	1,835,326	73.1%	675,364	-	675,364
2	Maryland	4,909,818	3,388,467	4,881,054	8,269,521	13,179,339	8,526,554	64.7%	4,652,785	-	4,652,785
1	Massachusetts	3,215,995	3,929,421	5,868,853	9,798,274	13,014,269	8,982,944	69.0%	4,031,325	6,728	4,024,597
5	Michigan	6,021,560	9,520,034	10,305,720	19,825,754	25,847,314	14,240,297	55.1%	11,607,017	-	11,607,017
5	Minnesota	4,716,159	2,762,545	4,145,819	6,908,364	11,624,523	6,579,888	56.6%	5,044,835	-	5,044,835
3	Mississippi	3,813,069	3,647,137	5,069,351	8,716,488	12,529,557	8,158,746	65.1%	4,370,811	-	4,370,811
5	Missouri	4,351,885	4,756,845	6,838,200	11,595,045	15,946,930	11,870,427	74.4%	4,076,503	-	4,076,503
4	Montana	962,857	800,367	988,346	1,788,713	2,751,570	2,204,651	80.1%	546,919	-	546,919
5	Nebraska	2,172,369	670,392	794,186	1,464,578	3,636,947	1,167,955	32.1%	2,468,992	-	2,468,992
6	Nevada	2,406,624	1,526,978	2,052,166	3,579,144	5,985,768	3,698,481	61.8%	2,287,287	23,511	2,263,776
1	New Hampshire	970,723	744,478	654,883	1,399,361	2,370,084	1,500,172	63.3%	869,912	-	869,912
1	New Jersey	10,782,888	5,662,133	10,145,959	15,808,092	26,590,980	16,660,992	62.7%	9,929,988	-	9,929,988
4	New Mexico	4,156,926	1,959,520	2,728,506	4,688,026	8,844,952	4,551,328	51.5%	4,293,624	-	4,293,624
1	New York	64,161,630	21,066,423	30,129,076	51,195,499	115,357,129	58,345,103	50.6%	57,012,026	-	57,012,026
3	North Carolina	12,660,853	9,474,156	4,638,304	14,112,460	26,773,313	12,348,007	46.1%	14,425,306	-	14,425,306
4	North Dakota	282,017	548,699	462,017	1,010,716	1,292,733	810,177	62.7%	482,556	-	482,556
5	Ohio	27,591,345	11,323,311	15,744,464	27,067,775	54,659,120	36,737,677	67.2%	17,921,443	-	17,921,443
4	Oklahoma	2,253,378	1,979,077	2,488,924	4,468,001	6,721,379	4,004,556	59.6%	2,716,823	-	2,716,823
6	Oregon	9,156,822	4,777,353	8,154,898	12,932,251	22,089,073	14,481,615	65.6%	7,607,458	-	7,607,458
2	Pennsylvania	17,941,011	10,723,505	16,788,873	27,512,378	45,453,389	26,438,661	58.2%	19,014,728	100,000	18,914,728
1	Puerto Rico	82,893,096	9,333,858	9,099,958	18,433,816	101,326,912	61,397,003	60.6%	39,929,909	9,166,463	30,763,446
1	Rhode Island	30,231	753,038	1,022,293	1,775,331	1,805,562	1,805,568	100.0%	-	-	-
3	South Carolina	6,829,727	4,497,266	6,673,105	11,170,371	18,000,098	9,218,955	51.2%	8,781,143	-	8,781,143
4	South Dakota	1,176,210	499,835	285,766	785,601	1,961,811	756,330	38.6%	1,205,481	-	1,205,481
3	Tennessee	6,395,437	5,178,738	7,163,820	12,342,558	18,737,995	11,673,462	62.3%	7,064,533	-	7,064,533
4	Texas	40,165,476	19,638,741	21,752,198	41,390,939	81,556,415	33,858,321	41.5%	47,698,094	4,996,859	42,701,235
4	Utah	492,292	1,090,864	1,333,540	2,424,404	2,916,696	2,101,293	72.0%	815,403	-	815,403
1	Vermont	(27,323)	521,349	399,496	920,845	893,522	893,521	100.0%	-	-	-
2	Virginia	9,026,958	4,048,500	5,667,961	9,716,461	18,743,419	10,974,891	58.6%	7,768,528	-	7,768,528
6	Washington	14,766,606	6,803,051	11,549,263	18,352,314	33,118,920	18,513,265	55.9%	14,605,655	-	14,605,655
2	West Virginia	12,195,197	2,253,117	3,905,915	6,159,032	18,354,229	16,165,867	88.1%	2,188,362	-	2,188,362
5	Wisconsin	4,609,881	4,473,329	7,168,560	11,641,889	16,251,770	9,289,697	57.2%	6,962,073	2,106,715	4,855,358
4	Wyoming	338,253	541,451	369,989	911,440	1,249,693	814,134	65.1%	435,559	-	435,559

U. S. Department of Labor
Employment and Training Administration
State WIA Formula Spending for Program Year 2003 as of 6/30/04 Reports
Local Level Spending

Reg	State	Unexpended Carry-In To PY 2003	New PY 2003 Availability			Total Available	Expenditures During PY 2003	Expenditures as % of Total Available	Unexpended Balance As of 6/30/04	Unexpended PY01/FY02	Unexpended Carry-Out To PY 2004
			PY 2003	FY 2004	Total						
	Total	\$792,663,077	\$1,190,037,516	\$1,176,621,476	\$2,366,658,992	\$3,159,322,069	\$2,479,869,830	78.5%	\$679,452,239	\$201,141,886	\$478,310,353
3	Alabama	25,701,684	20,792,581	20,741,266	41,533,847	67,235,531	50,558,670	75.2%	16,676,861	4,435,996	12,240,865
6	Alaska	8,399,920	4,086,404	4,290,946	8,377,350	16,777,270	12,329,602	73.5%	4,447,668	2,885,156	1,562,512
6	Arizona	6,949,886	19,880,924	20,235,672	40,116,596	47,066,482	35,507,860	75.4%	11,558,622	4,210,146	7,348,476
4	Arkansas	9,714,925	10,659,968	9,398,332	20,058,300	29,773,225	21,984,709	73.8%	7,788,516	2,037,645	5,750,871
6	California	105,791,135	174,243,640	166,010,270	340,253,910	446,045,045	366,975,942	82.3%	79,069,103	16,002,496	63,066,607
4	Colorado	7,193,737	10,866,809	10,671,030	21,537,839	28,731,576	20,875,836	72.7%	7,855,740	2,287,663	5,568,077
1	Connecticut	2,055,062	8,378,613	6,345,872	14,724,485	16,779,547	15,061,617	89.8%	1,717,930	566,928	1,151,002
2	Delaware	966,331	3,249,378	2,641,345	5,890,723	6,857,054	5,116,951	74.6%	1,740,103	383,949	1,356,154
2	District of Columbia	7,637,659	4,101,562	4,138,291	8,239,853	15,877,512	10,976,324	69.1%	4,901,188	1,790,850	3,110,338
3	Florida	15,967,669	54,044,026	62,393,337	116,437,363	132,405,032	108,413,212	81.9%	23,991,820	8,330,563	15,661,257
3	Georgia	25,617,071	21,459,614	19,884,066	41,343,680	66,960,751	52,094,944	77.8%	14,865,807	5,243,254	9,622,553
6	Hawaii	6,116,478	5,234,751	4,974,577	10,209,328	16,325,806	10,630,888	65.1%	5,694,918	1,359,444	4,335,474
6	Idaho	2,034,115	4,530,846	4,548,705	9,079,551	11,113,666	9,227,433	83.0%	1,886,233	105,394	1,780,839
5	Illinois	33,690,861	58,537,932	57,440,696	115,978,628	149,669,489	125,672,173	84.0%	23,997,316	6,737,220	17,260,096
5	Indiana	6,016,656	18,367,212	16,368,760	34,735,972	40,752,628	32,362,051	79.4%	8,390,577	2,085,878	6,304,699
5	Iowa	2,436,529	4,720,868	4,802,567	9,523,435	11,959,964	9,903,127	82.8%	2,056,847	540,599	1,516,248
5	Kansas	6,864,891	6,569,332	6,096,539	12,865,871	19,530,762	13,521,755	69.2%	6,009,007	1,152,118	4,856,889
3	Kentucky	14,153,778	18,583,677	16,846,603	35,430,280	49,584,058	31,720,284	64.0%	17,863,774	5,172,951	12,690,823
4	Louisiana	39,379,939	25,725,831	23,641,250	49,367,081	88,747,020	63,836,922	71.9%	24,910,098	6,326,110	18,583,988
1	Maine	678,864	3,420,514	2,758,466	6,178,980	6,857,844	6,107,846	89.1%	749,998	143,962	606,036
2	Maryland	8,168,734	14,280,870	14,078,271	28,359,141	36,527,875	30,739,513	84.2%	5,788,362	1,591,103	4,197,259
1	Massachusetts	5,821,737	15,022,525	13,305,162	28,327,687	34,149,424	29,858,440	87.4%	4,290,984	1,236,090	3,054,894
5	Michigan	10,026,508	52,001,352	55,214,319	107,215,671	117,242,179	95,690,787	81.6%	21,551,392	9,265,862	12,285,530
5	Minnesota	2,188,675	10,841,125	10,475,128	21,316,253	23,504,928	21,601,311	91.9%	1,903,617	691,553	1,212,064
3	Mississippi	11,471,639	16,629,914	15,694,697	32,324,611	43,796,250	28,959,855	66.1%	14,836,395	4,868,606	9,967,789
5	Missouri	3,899,845	19,230,277	17,950,517	37,180,794	41,080,639	33,930,135	82.6%	7,150,504	1,866,238	5,284,266
4	Montana	1,669,089	3,614,844	3,055,413	6,670,257	8,339,346	7,091,853	85.0%	1,247,493	165,137	1,082,356
5	Nebraska	3,437,698	3,286,776	3,088,596	6,375,372	9,813,070	6,438,861	65.6%	3,374,209	1,157,344	2,216,865
6	Nevada	2,741,806	7,819,552	9,128,928	16,948,480	19,690,286	13,481,799	68.5%	6,208,487	1,543,948	4,664,539
1	New Hampshire	2,080,728	3,109,838	2,943,867	6,053,705	8,134,433	6,078,947	74.7%	2,055,486	206,626	1,848,860
1	New Jersey	28,297,694	29,830,450	28,023,347	57,853,797	86,151,491	58,839,833	68.3%	27,311,658	8,311,484	19,000,174
4	New Mexico	13,158,631	8,237,592	7,382,702	15,620,294	28,778,925	19,788,531	68.8%	8,990,394	675,182	8,315,212
1	New York	88,954,647	81,423,880	83,654,003	165,077,883	254,032,530	208,117,987	81.9%	45,914,543	11,996,866	33,917,677
3	North Carolina	18,001,814	34,389,888	47,571,588	81,961,276	99,963,900	67,239,026	67.3%	32,724,064	12,376,437	20,347,627
4	North Dakota	641,130	2,893,098	2,000,958	4,894,056	5,535,186	5,165,011	93.3%	370,175	55,765	314,410
5	Ohio	62,854,131	46,764,841	42,478,542	89,243,383	152,097,514	102,157,923	67.2%	49,939,591	13,572,152	36,367,439
4	Oklahoma	6,830,015	8,962,153	7,892,214	16,854,367	23,684,382	17,781,794	75.1%	5,902,588	1,281,474	4,621,114
6	Oregon	12,140,078	20,651,113	22,465,818	43,116,931	55,257,009	45,866,779	83.0%	9,390,230	2,176,476	7,213,754
2	Pennsylvania	23,792,789	40,830,538	41,244,304	82,074,842	105,867,631	88,890,578	84.0%	16,977,053	5,366,861	11,610,192
1	Puerto Rico	40,060,261	52,891,866	51,255,801	104,147,667	144,207,928	114,632,338	79.5%	29,575,590	12,946,994	16,628,596
1	Rhode Island	1,605,991	3,122,679	2,636,620	5,759,299	7,365,290	6,289,439	85.4%	1,075,851	263,703	812,148
3	South Carolina	10,505,257	17,644,581	17,005,037	34,649,618	45,154,875	34,778,807	77.0%	10,376,068	2,863,299	7,512,769
4	South Dakota	1,568,385	3,029,064	2,415,544	5,444,608	7,012,993	5,652,368	80.6%	1,360,625	216,735	1,143,890
3	Tennessee	15,672,026	21,479,137	19,503,289	40,982,426	56,654,452	42,431,642	74.9%	14,222,810	3,966,048	10,256,762
4	Texas	31,485,188	103,170,370	103,928,257	207,098,627	238,583,815	195,625,318	82.0%	42,958,497	14,101,331	28,857,166
4	Utah	3,606,988	5,723,227	6,181,725	11,904,952	15,511,940	11,370,144	73.3%	4,141,796	1,982,441	2,159,355
1	Vermont	133,743	3,012,983	2,317,811	5,330,794	5,464,537	5,455,900	99.8%	8,637	-	8,637
2	Virginia	9,767,795	16,722,726	15,088,324	31,811,050	41,578,845	30,204,151	72.6%	11,374,694	3,039,309	8,335,385
6	Washington	23,178,298	36,624,385	37,795,302	74,419,687	97,597,985	77,888,574	79.8%	19,709,411	7,347,627	12,361,784
2	West Virginia	11,793,723	9,690,264	7,585,490	17,275,754	29,069,477	26,054,272	89.6%	3,015,205	1,597,126	1,418,079
5	Wisconsin	6,927,905	16,749,771	16,934,711	33,684,482	40,612,387	32,592,926	80.3%	8,019,461	2,322,272	5,697,189
4	Wyoming	2,812,939	2,901,555	2,096,601	4,998,156	7,811,095	6,296,852	80.6%	1,514,243	291,475	1,222,768

U. S. Department of Labor
Employment and Training Administration

**State WIA Formula Spending for Program Year 2003 as of 6/30/04 Reports
Fund Utilization Rate by Report Activity**

Reg	State	Statewide 15%	Statewide Rapid Response	Local Administration	Local Adults	Local Youth	Local Dislocated Workers
	Total	59.5%	57.3%	67.4%	80.0%	82.0%	77.1%
3	Alabama	56.6%	35.4%	64.4%	71.7%	87.4%	71.6%
6	Alaska	87.6%	94.9%	86.6%	89.0%	79.7%	60.7%
6	Arizona	60.6%	33.9%	86.1%	75.1%	80.9%	66.5%
4	Arkansas	51.4%	64.1%	71.2%	71.3%	80.9%	67.0%
6	California	78.7%	71.4%	62.2%	85.8%	83.0%	86.0%
4	Colorado	56.1%	19.6%	59.8%	76.2%	73.6%	72.9%
1	Connecticut	75.4%	38.8%	86.2%	91.8%	91.7%	85.5%
2	Delaware	70.4%	98.4%	92.0%	56.8%	85.5%	72.5%
2	District of Columbia	49.3%	7.1%	78.2%	78.7%	61.1%	65.4%
3	Florida	49.2%	33.2%	72.5%	84.7%	85.8%	77.8%
3	Georgia	74.1%	56.8%	72.0%	80.5%	83.2%	70.3%
6	Hawaii	65.3%	77.0%	65.0%	64.7%	63.5%	67.7%
6	Idaho	61.0%	100.0%	48.3%	88.2%	83.0%	96.1%
5	Illinois	35.2%	70.3%	67.6%	91.4%	83.5%	84.6%
5	Indiana	53.1%	74.6%	72.4%	83.2%	77.8%	80.7%
5	Iowa	57.3%	29.3%	75.7%	80.4%	84.9%	85.2%
5	Kansas	62.3%	52.2%	56.5%	77.4%	64.5%	72.5%
3	Kentucky	44.8%	32.1%	52.9%	65.2%	74.6%	52.8%
4	Louisiana	46.1%	20.1%	61.8%	73.1%	74.5%	71.2%
1	Maine	66.8%	87.0%	68.8%	93.4%	92.7%	90.0%
2	Maryland	59.6%	78.0%	71.3%	88.8%	84.5%	85.0%
1	Massachusetts	78.2%	52.7%	81.4%	93.9%	85.5%	87.2%
5	Michigan	54.2%	74.0%	66.3%	84.0%	92.2%	74.7%
5	Minnesota	51.6%	65.0%	89.6%	90.2%	96.7%	89.7%
3	Mississippi	63.2%	67.9%	59.7%	58.1%	82.3%	59.7%
5	Missouri	72.1%	77.4%	75.8%	87.6%	81.2%	81.4%
4	Montana	75.7%	98.1%	60.1%	93.7%	85.0%	88.5%
5	Nebraska	35.8%	12.7%	80.4%	56.4%	74.9%	59.3%
6	Nevada	62.3%	57.3%	59.2%	68.5%	71.0%	69.6%
1	New Hampshire	60.8%	79.7%	76.7%	72.2%	67.1%	90.0%
1	New Jersey	71.8%	46.4%	68.7%	57.8%	75.1%	69.5%
4	New Mexico	54.0%	-50.2%	69.1%	53.4%	67.9%	96.3%
1	New York	56.3%	25.4%	68.5%	82.7%	84.2%	84.1%
3	North Carolina	49.7%	21.6%	51.7%	72.7%	71.6%	65.3%
4	North Dakota	60.5%	77.6%	91.2%	95.3%	92.8%	91.4%
5	Ohio	60.3%	81.7%	62.9%	68.8%	71.3%	58.9%
4	Oklahoma	63.5%	53.9%	69.3%	76.0%	76.5%	73.8%
6	Oregon	57.4%	81.5%	50.3%	89.0%	84.9%	89.1%
2	Pennsylvania	61.0%	53.5%	65.3%	84.8%	91.5%	82.0%
1	Puerto Rico	62.6%	56.5%	84.7%	80.3%	85.9%	72.0%
1	Rhode Island	100.0%	100.0%	96.7%	72.3%	92.2%	82.6%
3	South Carolina	54.4%	44.2%	65.8%	75.8%	84.7%	73.7%
4	South Dakota	38.2%	48.1%	90.0%	75.1%	83.5%	77.3%
3	Tennessee	67.8%	52.7%	69.1%	73.2%	82.3%	67.8%
4	Texas	45.1%	21.1%	71.0%	85.2%	85.1%	79.5%
4	Utah	70.0%	91.3%	100.0%	69.5%	80.0%	70.4%
1	Vermont	100.0%	100.0%	100.0%	100.0%	99.6%	100.0%
2	Virginia	69.3%	43.9%	59.2%	76.4%	76.5%	68.0%
6	Washington	60.3%	43.1%	68.4%	85.6%	82.8%	77.1%
2	West Virginia	82.5%	93.0%	87.3%	90.5%	100.0%	82.0%
5	Wisconsin	44.3%	79.6%	74.1%	79.1%	82.7%	80.8%
4	Wyoming	65.5%	46.8%	50.6%	89.2%	84.2%	76.7%

U. S. Department of Labor
Employment and Training Administration
State WIA Formula Spending for Program Year 2003 as of 6/30/04 Reports
WIA SF-269 Report: Statewide 15%

Reg	State	Unexpended Carry-In To PY 2003	New PY 2003 Availability			Total Available	Expenditures During PY 2003	Expenditures as % of Total Available	Unexpended Balance As of 6/30/04	Unexpended Carry-Out To PY 2004
			PY 2003	FY 2004	Total					
	Total	\$438,344,925	\$219,632,986	\$226,711,743	\$446,344,729	\$884,689,654	\$526,658,310	59.5%	\$358,031,349	\$350,140,132
3	Alabama	7,716,200	3,808,176	4,027,757	7,835,933	15,552,133	8,799,720	56.6%	6,752,413	6,752,413
6	Alaska	2,207,835	721,131	762,484	1,483,615	3,691,450	3,234,407	87.6%	457,043	457,043
6	Arizona	8,041,087	3,915,415	3,966,024	7,881,439	15,922,526	9,648,634	60.6%	6,273,892	6,273,892
4	Arkansas	4,241,839	1,979,920	1,930,683	3,910,603	8,152,442	4,186,826	51.4%	3,965,616	3,965,616
6	California	66,940,313	32,882,743	35,185,119	68,067,862	135,008,175	106,216,075	78.7%	28,792,100	28,792,100
4	Colorado	2,476,979	1,951,806	2,148,172	4,099,978	6,576,957	3,692,700	56.1%	2,884,257	2,884,257
1	Connecticut	510,791	1,555,702	1,332,332	2,888,034	3,398,825	2,562,838	75.4%	835,987	835,987
2	Delaware	738,189	368,236	313,430	681,666	1,419,855	999,696	70.4%	420,159	420,159
2	District of Col	337,293	723,807	739,109	1,462,916	1,800,209	887,521	49.3%	912,688	912,688
3	Florida	7,564,353	10,203,167	11,256,184	21,459,351	29,023,704	14,289,846	49.2%	14,733,858	14,733,858
3	Georgia	6,496,544	4,021,128	4,049,068	8,070,196	14,566,740	10,789,008	74.1%	3,777,732	3,777,732
6	Hawaii	2,430,971	927,731	866,412	1,794,143	4,225,114	2,760,105	65.3%	1,465,009	1,465,009
6	Idaho	1,245,945	853,756	921,835	1,775,591	3,021,536	1,844,575	61.0%	1,176,961	1,176,961
5	Illinois	27,041,403	11,080,389	12,140,642	23,221,031	50,262,434	17,677,138	35.2%	32,585,296	32,461,190
5	Indiana	6,138,552	3,461,211	3,371,582	6,832,793	12,971,345	6,892,696	53.1%	6,078,649	5,377,177
5	Iowa	1,823,643	866,555	900,142	1,766,697	3,590,340	2,056,639	57.3%	1,533,701	1,533,701
5	Kansas	2,121,336	1,228,330	1,261,518	2,489,848	4,611,184	2,871,165	62.3%	1,740,019	1,740,019
5	Kentucky	7,091,848	3,460,024	3,470,140	6,930,164	14,022,012	6,286,057	44.8%	7,735,955	7,601,079
4	Louisiana	14,945,692	4,800,307	4,174,120	8,974,427	23,920,119	11,027,456	46.1%	12,892,663	12,892,663
1	Maine	526,482	631,967	565,092	1,197,059	1,723,541	1,150,579	66.8%	572,962	572,962
2	Maryland	4,051,462	2,650,401	2,843,898	5,494,299	9,545,761	5,690,592	59.6%	3,855,169	3,855,169
1	Massachusetts	2,601,693	2,842,794	2,876,104	5,718,898	8,320,591	6,510,539	78.2%	1,810,052	1,810,052
5	Michigan	5,996,491	9,228,208	9,497,946	18,726,154	24,722,645	13,407,960	54.2%	11,314,685	11,314,685
5	Minnesota	3,107,648	2,040,552	2,152,509	4,193,061	7,300,709	3,767,743	51.6%	3,532,966	3,532,966
3	Mississippi	1,390,148	2,996,558	3,075,383	6,071,941	7,462,089	4,718,012	63.2%	2,744,077	2,744,077
5	Missouri	1,711,794	3,598,069	3,657,699	7,255,768	8,967,562	6,468,764	72.1%	2,498,798	2,498,798
4	Montana	943,384	662,281	606,564	1,268,845	2,212,229	1,675,313	75.7%	536,916	536,916
5	Nebraska	1,882,239	593,574	582,416	1,175,990	3,058,229	1,094,527	35.8%	1,963,702	1,963,702
6	Nevada	2,336,925	1,401,978	1,677,166	3,079,144	5,416,069	3,372,327	62.3%	2,043,742	2,020,231
1	New Hampshire	935,125	578,147	539,811	1,117,958	2,053,083	1,247,549	60.8%	805,534	805,534
1	New Jersey	6,069,290	5,323,888	5,644,101	10,967,989	17,037,279	12,232,074	71.8%	4,805,205	4,805,205
4	New Mexico	5,604,732	1,509,221	1,511,398	3,020,619	8,625,351	4,661,509	54.0%	3,963,842	3,963,842
1	New York	61,930,721	15,373,545	16,831,259	32,204,804	94,135,525	52,960,158	56.3%	41,175,367	41,175,367
3	North Carolina	12,164,172	6,579,576	4,638,304	11,217,880	23,382,052	11,615,314	49.7%	11,766,738	11,766,738
4	North Dakota	241,842	516,270	369,446	885,716	1,127,558	681,994	60.5%	445,564	445,564
5	Ohio	19,749,603	8,713,223	8,580,930	17,294,153	37,043,756	22,346,163	60.3%	14,697,593	14,697,593
4	Oklahoma	782,954	1,641,184	1,557,171	3,198,355	3,981,309	2,527,102	63.5%	1,454,207	1,454,207
6	Oregon	6,785,491	3,442,589	4,369,113	7,811,702	14,597,193	8,374,609	57.4%	6,222,584	6,222,584
2	Pennsylvania	11,872,221	7,733,107	8,542,257	16,275,364	28,147,585	17,181,072	61.0%	10,966,513	10,866,513
1	Puerto Rico	50,094,940	9,333,858	8,887,059	18,220,917	68,315,857	42,749,120	62.6%	25,566,737	25,566,737
1	Rhode Island	30,231	581,357	548,833	1,130,190	1,160,421	1,160,427	100.0%	0	-
3	South Carolina	5,642,742	3,321,276	3,474,270	6,795,546	12,438,288	6,762,671	54.4%	5,675,617	5,675,617
4	South Dakota	1,151,640	487,335	248,266	735,601	1,887,241	720,429	38.2%	1,166,812	1,166,812
3	Tennessee	4,003,952	3,998,681	3,935,588	7,934,269	11,938,221	8,092,260	67.8%	3,845,961	3,845,961
4	Texas	32,478,797	18,421,368	18,391,222	36,812,590	69,291,387	31,274,953	45.1%	38,016,434	33,019,575
4	Utah	488,035	1,022,114	1,127,290	2,149,404	2,637,439	1,846,227	70.0%	791,212	791,212
1	Vermont	(27,323)	479,108	361,564	840,672	813,349	813,348	100.0%	0	-
2	Virginia	4,580,297	3,115,684	3,107,795	6,223,479	10,803,776	7,487,895	69.3%	3,315,881	3,315,881
6	Washington	11,018,526	6,514,116	7,099,182	13,613,298	24,631,824	14,854,961	60.3%	9,776,863	9,776,863
2	West Virginia	4,207,816	1,791,507	2,609,873	4,401,380	8,609,196	7,105,073	82.5%	1,504,123	1,504,123
5	Wisconsin	3,540,758	3,183,465	3,615,492	6,798,957	10,339,715	4,581,027	44.3%	5,758,688	3,948,295
4	Wyoming	339,284	516,451	369,989	886,440	1,225,724	802,917	65.5%	422,807	422,807

U. S. Department of Labor
Employment and Training Administration
State WIA Formula Spending for Program Year 2003 as of 6/30/04 Reports
WIA SF-269 Report: Statewide Rapid Response

Reg	State	Unexpended Carry-In To PY 2003	New PY 2003 Availability			Total Available	Expenditures During PY 2003	Expenditures as % of Total Available	Unexpended Balance As of 6/30/04	Unexpended Carry-Out To PY 2004
			PY 2003	FY 2004	Total					
	Total	\$174,145,219	\$57,444,374	\$143,302,995	\$200,747,369	\$374,892,588	\$214,922,962	57.3%	\$159,969,626	\$149,454,303
3	Alabama	3,545,939	787,080	2,160,185	2,947,265	6,493,204	2,297,403	35.4%	4,195,801	4,195,801
6	Alaska	1,479,341	0	0	0	1,479,341	1,403,869	94.9%	75,472	-
6	Arizona	3,101,555	500,899	1,299,230	1,800,129	4,901,684	1,662,951	33.9%	3,238,733	3,238,733
4	Arkansas	284,597	559,589	1,542,210	2,101,799	2,386,396	1,529,991	64.1%	856,405	856,405
6	California	38,621,350	12,091,910	33,372,076	45,463,986	84,085,336	60,053,311	71.4%	24,032,025	24,032,025
4	Colorado	232,680	193,435	1,501,946	1,695,381	1,928,061	378,097	19.6%	1,549,964	1,549,964
1	Connecticut	351,738	437,032	1,204,024	1,641,056	1,992,794	773,896	38.8%	1,218,898	1,218,898
2	Delaware	5,106	3,959	6,197	10,156	15,262	15,015	98.4%	247	247
2	District of Col	3,837	0	50,000	50,000	53,837	3,837	7.1%	50,000	50,000
3	Florida	3,626,049	3,773,926	1,391,710	5,165,636	8,791,685	2,916,248	33.2%	5,875,437	5,875,437
3	Georgia	3,451,149	1,326,776	3,625,119	4,951,895	8,403,044	4,773,931	56.8%	3,629,113	3,629,113
6	Hawaii	0	22,389	30,352	52,741	52,741	40,602	77.0%	12,139	12,139
6	Idaho	395,682	307,117	675,038	982,155	1,377,837	1,377,837	100.0%	0	-
5	Illinois	7,450,160	4,250,942	11,666,943	15,917,885	23,368,045	16,416,545	70.3%	6,951,500	6,951,500
5	Indiana	1,089,761	1,246,330	3,420,624	4,666,954	5,756,715	4,294,313	74.6%	1,462,402	1,375,401
5	Iowa	727,940	189,614	523,494	713,108	1,441,048	422,352	29.3%	1,018,696	931,784
5	Kansas	345,198	391,214	1,073,706	1,464,920	1,810,118	945,364	52.2%	864,754	864,754
3	Kentucky	1,526,193	1,023,127	2,817,524	3,840,651	5,366,844	1,722,006	32.1%	3,644,838	3,595,078
4	Louisiana	14,011,812	1,475,907	557,330	2,033,237	16,045,049	3,224,938	20.1%	12,820,111	12,073,446
1	Maine	182,792	160,635	443,722	604,357	787,149	684,747	87.0%	102,402	102,402
2	Maryland	858,356	738,066	2,037,156	2,775,222	3,633,578	2,835,962	78.0%	797,616	797,616
1	Massachusetts	614,302	1,086,627	2,992,749	4,079,376	4,693,678	2,472,405	52.7%	2,221,273	2,214,545
5	Michigan	25,069	291,826	807,774	1,099,600	1,124,669	832,337	74.0%	292,332	292,332
5	Minnesota	1,608,511	721,993	1,993,310	2,715,303	4,323,814	2,811,945	65.0%	1,511,869	1,511,869
3	Mississippi	2,422,921	650,579	1,993,968	2,644,547	5,067,468	3,440,734	67.9%	1,626,734	1,626,734
5	Missouri	2,640,091	1,158,776	3,180,501	4,339,277	6,979,368	5,401,663	77.4%	1,577,705	1,577,705
4	Montana	19,473	138,086	381,782	519,868	539,341	529,338	98.1%	10,003	10,003
5	Nebraska	290,130	76,818	211,770	288,588	578,718	73,428	12.7%	505,290	505,290
6	Nevada	69,699	125,000	375,000	500,000	569,699	326,154	57.3%	243,545	243,545
1	New Hampshire	35,598	166,331	115,072	281,403	317,001	252,623	79.7%	64,378	64,378
1	New Jersey	4,713,598	338,245	4,501,858	4,840,103	9,553,701	4,428,918	46.4%	5,124,783	5,124,783
4	New Mexico	(1,447,806)	450,299	1,217,108	1,667,407	219,601	(110,181)	-50.2%	329,782	329,782
1	New York	2,230,909	5,692,878	13,297,817	18,990,695	21,221,604	5,384,945	25.4%	15,836,659	15,836,659
3	North Carolina	496,681	2,894,580	0	2,894,580	3,391,261	732,693	21.6%	2,658,568	2,658,568
4	North Dakota	40,175	32,429	92,571	125,000	165,175	128,183	77.6%	36,992	36,992
5	Ohio	7,841,742	2,610,088	7,163,534	9,773,622	17,615,364	14,391,514	81.7%	3,223,850	3,223,850
4	Oklahoma	1,470,424	337,893	931,753	1,269,646	2,740,070	1,477,454	53.9%	1,262,616	1,262,616
6	Oregon	2,371,331	1,334,764	3,785,785	5,120,549	7,491,880	6,107,006	81.5%	1,384,874	1,384,874
2	Pennsylvania	6,068,790	2,990,398	8,246,616	11,237,014	17,305,804	9,257,589	53.5%	8,048,215	8,048,215
1	Puerto Rico	32,798,156	0	212,899	212,899	33,011,055	18,647,883	56.5%	14,363,172	5,196,709
1	Rhode Island	0	171,681	473,460	645,141	645,141	645,141	100.0%	0	-
3	South Carolina	1,186,985	1,175,990	3,198,835	4,374,825	5,561,810	2,456,284	44.2%	3,105,526	3,105,526
4	South Dakota	24,570	12,500	37,500	50,000	74,570	35,901	48.1%	38,669	38,669
3	Tennessee	2,391,485	1,180,057	3,228,232	4,408,289	6,799,774	3,581,202	52.7%	3,218,572	3,218,572
4	Texas	7,686,679	1,217,373	3,360,976	4,578,349	12,265,028	2,583,368	21.1%	9,681,660	9,681,660
4	Utah	4,257	68,750	206,250	275,000	279,257	255,066	91.3%	24,191	24,191
1	Vermont	0	42,241	37,932	80,173	80,173	80,173	100.0%	0	-
2	Virginia	4,446,661	932,816	2,560,166	3,492,982	7,939,643	3,486,996	43.9%	4,452,647	4,452,647
6	Washington	3,748,080	288,935	4,450,081	4,739,016	8,487,096	3,658,304	43.1%	4,828,792	4,828,792
2	West Virginia	7,987,381	461,610	1,296,042	1,757,652	9,745,033	9,060,794	93.0%	684,239	684,239
5	Wisconsin	1,069,123	1,289,864	3,553,068	4,842,932	5,912,055	4,708,670	79.6%	1,203,385	907,063
4	Wyoming	(1,031)	25,000	0	25,000	23,969	11,217	46.8%	12,752	12,752

U. S. Department of Labor
Employment and Training Administration
State WIA Formula Spending for Program Year 2003 as of 6/30/04 Reports
WIA SF-269 Report: Local Administration

Reg	State	Unexpended Carry-In To PY 2003	New PY 2003 Availability			Total Available	Expenditures During PY 2003	Expenditures as % of Total Available	Unexpended Balance As of 6/30/04	Unexpended Carry-Out To PY 2004
			PY 2003	FY 2004	Total					
	Total	\$110,260,076	\$115,165,555	\$114,245,941	\$229,411,496	\$339,671,572	\$229,047,581	67.4%	\$110,623,989	\$110,621,687
3	Alabama	2,048,585	1,926,737	1,649,096	3,575,833	5,624,418	3,624,380	64.4%	2,000,038	2,000,038
6	Alaska	375,675	408,639	432,075	840,714	1,216,389	1,053,015	86.6%	163,374	163,374
6	Arizona	797,166	1,494,865	1,282,456	2,777,321	3,574,487	3,078,421	86.1%	496,066	496,066
4	Arkansas	1,128,163	1,065,997	939,834	2,005,831	3,133,994	2,230,981	71.2%	903,013	903,013
6	California	16,255,863	16,912,791	16,556,588	33,469,379	49,725,242	30,909,653	62.2%	18,815,589	18,815,589
4	Colorado	999,180	1,045,386	1,020,581	2,065,967	3,035,147	1,813,692	59.8%	1,221,455	1,221,455
1	Connecticut	136,996	837,862	634,587	1,472,449	1,609,445	1,388,128	86.2%	221,317	221,317
2	Delaware	173,190	82,437	166,818	249,255	422,445	388,762	92.0%	33,683	33,683
2	District of Col	506,443	410,155	413,830	823,985	1,330,428	1,040,303	78.2%	290,125	290,125
3	Florida	1,585,228	5,404,403	6,239,333	11,643,736	13,228,964	9,593,371	72.5%	3,635,593	3,634,523
3	Georgia	2,836,579	2,145,961	1,988,405	4,134,366	6,970,945	5,019,520	72.0%	1,951,425	1,951,425
6	Hawaii	779,894	523,472	497,455	1,020,927	1,800,821	1,170,984	65.0%	629,837	629,837
6	Idaho	598,060	453,084	437,543	890,627	1,488,687	718,907	48.3%	769,780	769,780
5	Illinois	7,136,357	5,825,214	5,761,428	11,586,642	18,722,999	12,655,880	67.6%	6,067,119	6,067,119
5	Indiana	977,770	1,836,720	1,636,873	3,473,593	4,451,363	3,220,719	72.4%	1,230,644	1,230,644
5	Iowa	314,053	472,084	478,617	950,701	1,264,754	957,092	75.7%	307,662	307,662
5	Kansas	804,877	618,073	609,654	1,227,727	2,032,604	1,147,527	56.5%	885,077	885,077
3	Kentucky	2,897,440	1,831,519	1,667,345	3,498,864	6,396,304	3,386,735	52.9%	3,009,569	3,009,569
4	Louisiana	4,229,234	2,572,572	2,364,117	4,936,689	9,165,923	5,660,785	61.8%	3,505,138	3,505,138
1	Maine	329,812	342,051	274,218	616,269	946,081	651,041	68.8%	295,040	295,040
2	Maryland	1,855,889	1,428,086	1,407,827	2,835,913	4,691,802	3,345,596	71.3%	1,346,206	1,346,206
1	Massachusetts	839,445	1,502,252	1,330,516	2,832,768	3,672,213	2,987,815	81.4%	684,398	684,398
5	Michigan	1,983,670	5,185,139	5,464,484	10,649,623	12,633,293	8,380,321	66.3%	4,252,972	4,252,972
5	Minnesota	436,737	1,083,593	1,047,315	2,130,908	2,567,645	2,299,802	89.6%	267,843	267,843
3	Mississippi	2,442,640	1,474,244	1,495,562	2,969,806	5,412,446	3,231,402	59.7%	2,181,044	2,181,044
5	Missouri	825,820	1,923,019	1,795,049	3,718,068	4,543,888	3,445,637	75.8%	1,098,251	1,098,251
4	Montana	476,581	361,485	305,541	667,026	1,143,607	687,210	60.1%	456,397	456,397
5	Nebraska	310,725	328,677	308,861	637,538	948,263	762,732	80.4%	185,531	185,531
6	Nevada	463,735	781,956	912,893	1,694,849	2,158,584	1,277,523	59.2%	881,061	881,061
1	New Hampshire	113,158	206,490	252,262	458,752	571,910	438,449	76.7%	133,461	133,461
1	New Jersey	2,509,718	2,816,794	2,703,586	5,520,380	8,030,098	5,516,150	68.7%	2,513,948	2,513,948
4	New Mexico	1,976,058	823,760	738,740	1,562,500	3,538,558	2,446,650	69.1%	1,091,908	1,091,908
1	New York	13,680,943	8,142,388	8,365,400	16,507,788	30,188,731	20,681,375	68.5%	9,507,356	9,507,356
3	North Carolina	3,635,670	3,438,969	4,757,158	8,196,127	11,831,797	6,114,626	51.7%	5,717,171	5,717,171
4	North Dakota	170,356	289,310	200,095	489,405	659,761	601,623	91.2%	58,138	58,138
5	Ohio	4,033,256	3,824,362	4,047,588	7,871,950	11,905,206	7,491,994	62.9%	4,413,212	4,413,212
4	Oklahoma	591,868	895,236	789,221	1,684,457	2,276,325	1,577,592	69.3%	698,733	698,733
6	Oregon	2,814,173	2,065,105	2,252,623	4,317,728	7,131,901	3,586,167	50.3%	3,545,734	3,545,734
2	Pennsylvania	3,605,272	4,083,052	4,050,429	8,133,481	11,738,753	7,664,166	65.3%	4,074,587	4,074,587
1	Puerto Rico	3,055,925	5,162,628	4,534,816	9,697,444	12,753,369	10,802,490	84.7%	1,950,879	1,950,879
1	Rhode Island	352,849	312,268	263,662	575,930	928,779	898,320	96.7%	30,459	30,459
3	South Carolina	1,634,208	1,764,457	1,700,504	3,464,961	5,099,169	3,357,534	65.8%	1,741,635	1,741,635
4	South Dakota	114,780	298,706	224,006	522,712	637,492	573,905	90.0%	63,587	63,587
3	Tennessee	2,210,335	2,147,914	1,950,329	4,098,243	6,308,578	4,356,444	69.1%	1,952,134	1,952,134
4	Texas	5,471,836	10,317,036	10,392,826	20,709,862	26,181,698	18,589,846	71.0%	7,591,852	7,591,852
4	Utah	0	36,702	90,784	127,486	127,486	127,484	100.0%	0	-
1	Vermont	0	212,695	132,741	345,436	345,436	345,436	100.0%	0	-
2	Virginia	1,373,030	1,672,273	1,508,833	3,181,106	4,554,136	2,698,043	59.2%	1,856,093	1,856,093
6	Washington	5,329,576	3,501,461	3,668,743	7,170,204	12,499,780	8,550,042	68.4%	3,949,738	3,949,738
2	West Virginia	1,694,017	969,026	809,223	1,778,249	3,472,266	3,031,396	87.3%	440,870	440,870
5	Wisconsin	688,638	1,674,977	1,693,471	3,368,448	4,057,086	3,004,508	74.1%	1,052,578	1,051,346
4	Wyoming	688,603	231,473	0	231,473	920,076	465,407	50.6%	454,669	454,669

U. S. Department of Labor
Employment and Training Administration
State WIA Formula Spending for Program Year 2003 as of 6/30/04 Reports
WIA SF-269 Report: Local Adult

Reg	State	Unexpended Carry-In To PY 2003	New PY 2003 Availability			Total Available	Expenditures During PY 2003	Expenditures as % of Total Available	Unexpended Balance As of 6/30/04	Unexpended Carry-Out To PY 2004
			PY 2003	FY 2004	Total					
	Total	\$199,496,794	\$150,035,091	\$578,774,016	\$728,809,107	\$928,305,901	\$743,015,667	80.0%	\$185,290,234	\$185,239,273
3	Alabama	9,470,517	4,318,797	14,517,691	18,836,488	28,307,005	20,290,670	71.7%	8,016,335	8,016,335
6	Alaska	936,612	491,051	1,857,455	2,348,506	3,285,118	2,922,232	89.0%	362,886	362,886
6	Arizona	2,220,747	2,854,095	10,998,462	13,852,557	16,073,304	12,067,739	75.1%	4,005,565	4,005,565
4	Arkansas	3,231,211	1,353,026	5,127,324	6,480,350	9,711,561	6,922,496	71.3%	2,789,065	2,789,065
6	California	22,306,349	21,701,493	84,040,881	105,742,374	128,048,723	109,920,152	85.8%	18,128,571	18,128,571
4	Colorado	1,510,852	1,396,559	5,424,108	6,820,667	8,331,519	6,346,313	76.2%	1,985,206	1,985,206
1	Connecticut	425,137	820,841	3,110,593	3,931,434	4,356,571	3,999,015	91.8%	357,556	357,556
2	Delaware	129,276	381,320	1,557,820	1,939,140	2,068,416	1,175,892	56.8%	892,524	892,524
2	District of Col	1,585,795	692,936	2,412,284	3,105,220	4,691,015	3,690,190	78.7%	1,000,825	1,000,825
3	Florida	6,392,211	6,757,558	28,757,549	35,515,107	41,907,318	35,496,002	84.7%	6,411,316	6,408,364
3	Georgia	8,703,044	2,609,828	9,948,699	12,558,527	21,261,571	17,124,182	80.5%	4,137,389	4,137,389
6	Hawaii	1,616,042	663,340	2,528,660	3,192,000	4,808,042	3,112,410	64.7%	1,695,632	1,695,632
6	Idaho	440,425	555,631	2,105,576	2,661,207	3,101,632	2,736,771	88.2%	364,861	364,861
5	Illinois	6,022,018	6,910,061	27,619,363	34,529,424	40,551,442	37,059,483	91.4%	3,491,959	3,491,959
5	Indiana	1,303,979	1,905,057	7,612,470	9,517,527	10,821,506	9,002,925	83.2%	1,818,581	1,818,581
5	Iowa	569,618	553,218	2,108,873	2,662,091	3,231,709	2,598,652	80.4%	633,057	633,057
5	Kansas	1,627,807	948,714	3,217,573	4,166,287	5,794,094	4,486,971	77.4%	1,307,123	1,307,123
3	Kentucky	4,314,552	2,693,377	8,795,511	11,488,888	15,803,440	10,303,265	65.2%	5,500,175	5,500,175
4	Louisiana	10,628,036	3,762,118	13,521,426	17,283,544	27,911,580	20,416,450	73.1%	7,495,130	7,495,130
1	Maine	134,570	402,209	1,491,651	1,893,860	2,028,430	1,894,863	93.4%	133,567	133,567
2	Maryland	1,255,279	2,236,762	6,711,781	8,948,523	10,203,802	9,056,762	88.8%	1,147,040	1,147,040
1	Massachusetts	993,701	1,454,091	5,231,352	6,685,443	7,679,144	7,212,430	93.9%	466,714	466,714
5	Michigan	2,422,971	7,047,693	23,835,927	30,883,620	33,306,591	27,967,972	84.0%	5,338,619	5,338,619
5	Minnesota	826,682	1,343,664	5,122,068	6,465,732	7,292,414	6,581,113	90.2%	711,301	711,301
3	Mississippi	2,571,171	2,620,267	7,746,899	10,367,166	12,938,337	7,517,895	58.1%	5,420,442	5,420,442
5	Missouri	549,421	2,470,297	9,373,695	11,843,992	12,393,413	10,860,984	87.6%	1,532,429	1,532,429
4	Montana	313,923	508,039	1,925,224	2,433,263	2,747,186	2,572,958	93.7%	174,228	174,228
5	Nebraska	887,672	356,320	1,567,232	1,923,552	2,811,224	1,584,155	56.4%	1,227,069	1,227,069
6	Nevada	658,261	871,232	5,537,989	6,409,221	7,067,482	4,844,508	68.5%	2,222,974	2,222,974
1	New Hampshire	309,497	356,320	1,171,617	1,527,937	1,837,434	1,327,525	72.2%	509,909	509,909
1	New Jersey	6,479,351	3,047,674	12,400,910	15,448,584	21,927,935	12,663,419	57.8%	9,264,516	9,264,516
4	New Mexico	4,693,993	1,034,373	4,416,036	5,450,409	10,144,402	5,413,149	53.4%	4,731,253	4,731,253
1	New York	14,331,045	10,306,990	41,893,730	52,200,720	66,531,765	55,035,641	82.7%	11,496,124	11,496,124
3	North Carolina	2,771,457	4,160,189	17,958,540	22,118,729	24,890,186	18,082,913	72.7%	6,807,273	6,807,273
4	North Dakota	161,346	356,320	1,350,282	1,706,602	1,867,948	1,780,474	95.3%	87,474	87,474
5	Ohio	20,166,561	5,986,211	22,554,067	28,540,278	48,706,839	33,527,519	68.8%	15,179,320	15,179,320
4	Oklahoma	2,097,681	1,177,015	4,186,270	5,363,285	7,460,966	5,669,641	76.0%	1,791,325	1,791,325
6	Oregon	2,248,170	2,424,448	9,624,879	12,049,327	14,297,497	12,724,632	89.0%	1,572,865	1,572,865
2	Pennsylvania	6,082,624	5,059,498	19,681,013	24,740,511	30,823,135	26,144,541	84.8%	4,678,594	4,678,594
1	Puerto Rico	12,688,965	6,655,008	28,074,712	34,729,720	47,418,685	38,057,666	80.3%	9,361,019	9,361,019
1	Rhode Island	297,511	356,320	1,350,286	1,706,606	2,004,117	1,449,866	72.3%	554,251	554,251
3	South Carolina	3,620,633	2,289,787	8,781,455	11,071,242	14,691,875	11,142,680	75.8%	3,549,195	3,549,195
4	South Dakota	320,680	398,320	1,508,282	1,906,602	2,227,282	1,673,658	75.1%	553,624	553,624
3	Tennessee	4,023,363	2,817,590	10,498,066	13,315,656	17,339,019	12,688,131	73.2%	4,650,888	4,650,888
4	Texas	9,228,937	12,020,827	48,408,979	60,429,806	69,658,743	59,381,425	85.2%	10,277,318	10,277,318
4	Utah	1,007,229	623,898	2,356,245	2,980,143	3,987,372	2,769,897	69.5%	1,217,475	1,217,475
1	Vermont	21,086	356,321	1,366,001	1,722,322	1,743,408	1,743,408	100.0%	0	-
2	Virginia	2,035,161	2,115,214	7,953,058	10,068,272	12,103,433	9,244,943	76.4%	2,858,490	2,858,490
6	Washington	4,904,787	4,134,198	16,484,581	20,618,779	25,523,566	21,856,976	85.6%	3,666,590	3,666,590
2	West Virginia	5,113,163	1,286,345	3,881,965	5,168,310	10,281,473	9,304,264	90.5%	977,209	977,209
5	Wisconsin	2,271,827	1,996,720	7,566,613	9,563,333	11,835,160	9,365,025	79.1%	2,470,135	2,422,126
4	Wyoming	573,848	395,911	1,500,313	1,896,224	2,470,072	2,202,824	89.2%	267,248	267,248

U. S. Department of Labor
Employment and Training Administration
State WIA Formula Spending for Program Year 2003 as of 6/30/04 Reports
WIA SF-269 Report: Local Youth

Reg	State	Unexpended Carry-In To PY 2003	New PY 2003 Availability			Total Available	Expenditures During PY 2003	Expenditures as % of Total Available	Unexpended Balance As of 6/30/04	Unexpended Carry-Out To PY 2004
			PY 2003	FY 2004	Total					
	Total	\$267,327,215	\$748,043,520	\$0	\$748,043,520	\$1,015,370,735	\$832,527,016	82.0%	\$182,843,719	\$182,372,049
3	Alabama	4,789,367	12,894,177	0	12,894,177	17,683,544	15,459,052	87.4%	2,224,492	2,224,492
6	Alaska	2,274,887	2,465,017	0	2,465,017	4,739,904	3,778,653	79.7%	961,251	961,251
6	Arizona	2,302,224	12,566,094	0	12,566,094	14,868,318	12,021,473	80.9%	2,846,845	2,846,845
4	Arkansas	3,724,451	7,032,237	0	7,032,237	10,756,688	8,697,895	80.9%	2,058,793	2,058,793
6	California	43,457,004	110,295,651	0	110,295,651	153,752,655	127,630,208	83.0%	26,122,447	26,122,447
4	Colorado	2,556,958	6,380,890	0	6,380,890	8,937,848	6,576,432	73.6%	2,361,416	2,361,416
1	Connecticut	1,129,864	5,775,921	0	5,775,921	6,905,785	6,333,656	91.7%	572,129	572,129
2	Delaware	512,257	2,458,258	0	2,458,258	2,970,515	2,540,568	85.5%	429,947	429,947
2	District of Col	2,169,223	2,510,528	0	2,510,528	4,679,751	2,860,363	61.1%	1,819,388	1,819,388
3	Florida	6,025,338	33,730,385	0	33,730,385	39,755,723	34,124,289	85.8%	5,631,434	5,616,039
3	Georgia	7,228,044	13,837,988	0	13,837,988	21,066,032	17,532,293	83.2%	3,533,739	3,533,739
6	Hawaii	2,151,673	3,351,458	0	3,351,458	5,503,131	3,493,126	63.5%	2,010,005	2,010,005
6	Idaho	940,331	2,858,758	0	2,858,758	3,799,089	3,152,891	83.0%	646,198	646,198
5	Illinois	10,069,721	36,597,981	0	36,597,981	46,667,702	38,966,684	83.5%	7,701,018	7,701,018
5	Indiana	2,763,906	11,933,363	0	11,933,363	14,697,269	11,441,795	77.8%	3,255,474	3,255,474
5	Iowa	903,073	2,899,184	0	2,899,184	3,802,257	3,226,737	84.9%	575,520	575,520
5	Kansas	3,273,262	4,236,616	0	4,236,616	7,509,878	4,845,189	64.5%	2,664,689	2,664,689
3	Kentucky	4,289,027	12,142,617	0	12,142,617	16,431,644	12,250,565	74.6%	4,181,079	4,181,079
4	Louisiana	13,027,577	16,692,569	0	16,692,569	29,720,146	22,136,426	74.5%	7,583,720	7,583,720
1	Maine	117,516	2,329,284	0	2,329,284	2,446,800	2,269,371	92.7%	177,429	177,429
2	Maryland	2,087,636	8,922,804	0	8,922,804	11,010,440	9,306,427	84.5%	1,704,013	1,704,013
1	Massachusetts	3,451,673	9,719,069	0	9,719,069	13,170,742	11,266,960	85.5%	1,903,782	1,903,782
5	Michigan	3,590,402	31,097,076	0	31,097,076	34,687,478	31,993,539	92.2%	2,693,939	2,693,939
5	Minnesota	100,642	6,854,363	0	6,854,363	6,955,005	6,722,085	96.7%	232,920	232,920
3	Mississippi	2,679,781	10,678,215	0	10,678,215	13,357,996	10,991,693	82.3%	2,366,303	2,366,303
5	Missouri	1,750,058	12,379,019	0	12,379,019	14,129,077	11,475,491	81.2%	2,653,586	2,653,586
4	Montana	571,570	2,447,054	0	2,447,054	3,018,624	2,566,893	85.0%	451,731	451,731
5	Nebraska	1,126,377	2,083,259	0	2,083,259	3,209,636	2,405,371	74.9%	804,265	804,265
6	Nevada	1,008,905	4,371,534	0	4,371,534	5,380,439	3,819,935	71.0%	1,560,504	1,560,504
1	New Hampshire	1,472,615	2,187,752	0	2,187,752	3,660,367	2,454,877	67.1%	1,205,490	1,205,490
1	New Jersey	11,169,378	17,776,394	0	17,776,394	28,945,772	21,724,062	75.1%	7,221,710	7,221,710
4	New Mexico	3,791,723	5,406,814	0	5,406,814	9,198,537	6,250,211	67.9%	2,948,326	2,492,051
1	New York	31,179,293	50,677,886	0	50,677,886	81,857,179	68,942,982	84.2%	12,914,197	12,914,197
3	North Carolina	6,949,286	20,592,242	0	20,592,242	27,541,528	19,718,345	71.6%	7,823,183	7,823,183
4	North Dakota	272,345	2,083,258	0	2,083,258	2,355,603	2,186,805	92.8%	168,798	168,798
5	Ohio	27,164,392	31,312,685	0	31,312,685	58,477,077	41,702,170	71.3%	16,774,907	16,774,907
4	Oklahoma	3,134,321	5,922,422	0	5,922,422	9,056,743	6,925,687	76.5%	2,131,056	2,131,056
6	Oregon	1,759,487	12,126,460	0	12,126,460	13,885,947	11,790,792	84.9%	2,095,155	2,095,155
2	Pennsylvania	8,260,609	25,228,729	0	25,228,729	33,489,338	30,632,327	91.5%	2,857,011	2,857,011
1	Puerto Rico	4,182,295	33,551,605	0	33,551,605	37,733,900	32,417,202	85.9%	5,316,698	5,316,698
1	Rhode Island	837,684	2,083,258	0	2,083,258	2,920,942	2,693,504	92.2%	227,438	227,438
3	South Carolina	3,316,159	11,174,451	0	11,174,451	14,490,610	12,268,671	84.7%	2,221,939	2,221,939
4	South Dakota	1,110,646	2,083,258	0	2,083,258	3,193,904	2,667,225	83.5%	526,679	526,679
3	Tennessee	6,671,079	14,023,708	0	14,023,708	20,694,787	17,041,048	82.3%	3,653,739	3,653,739
4	Texas	10,311,033	63,482,342	0	63,482,342	73,793,375	62,805,379	85.1%	10,987,996	10,987,996
4	Utah	1,032,889	3,669,859	0	3,669,859	4,702,748	3,760,870	80.0%	941,878	941,878
1	Vermont	106,419	2,194,725	0	2,194,725	2,301,144	2,292,507	99.6%	8,637	8,637
2	Virginia	4,495,896	10,920,356	0	10,920,356	15,416,252	11,795,450	76.5%	3,620,802	3,620,802
6	Washington	6,349,916	21,190,906	0	21,190,906	27,540,822	22,795,366	82.8%	4,745,456	4,745,456
2	West Virginia	0	6,437,816	0	6,437,816	6,437,816	6,437,816	100.0%	0	-
5	Wisconsin	2,598,997	10,291,967	0	10,291,967	12,890,964	10,667,247	82.7%	2,223,717	2,223,717
4	Wyoming	1,088,006	2,083,258	0	2,083,258	3,171,264	2,670,413	84.2%	500,851	500,851

U. S. Department of Labor
Employment and Training Administration
State WIA Formula Spending for Program Year 2003 as of 6/30/04 Reports
WIA SF-269 Report: Local Dislocated Workers

Reg	State	Unexpended Carry-In To PY 2003	New PY 2003 Availability			Total Available	Expenditures During PY 2003	Expenditures as % of Total Available	Unexpended Balance As of 6/30/04	Unexpended Carry-Out To PY 2004
			PY 2003	FY 2004	Total					
	Total	\$215,578,992	\$176,793,350	\$483,601,519	\$660,394,869	\$875,973,861	\$675,279,566	77.1%	\$200,694,295	\$200,616,953
3	Alabama	9,393,215	1,652,870	4,574,479	6,227,349	15,620,564	11,184,568	71.6%	4,435,996	4,435,996
6	Alaska	4,812,746	721,697	2,001,416	2,723,113	7,535,859	4,575,702	60.7%	2,960,157	2,885,156
6	Arizona	1,629,749	2,965,870	7,954,754	10,920,624	12,550,373	8,340,227	66.5%	4,210,146	4,210,146
4	Arkansas	1,631,100	1,208,708	3,331,174	4,539,882	6,170,982	4,133,337	67.0%	2,037,645	2,037,645
6	California	23,771,919	25,333,705	65,412,801	90,746,506	114,518,425	98,515,929	86.0%	16,002,496	16,002,496
4	Colorado	2,156,747	2,043,974	4,226,341	6,270,315	8,427,062	6,139,399	72.9%	2,287,663	2,287,663
1	Connecticut	363,065	943,989	2,600,692	3,544,681	3,907,746	3,340,818	85.5%	566,928	566,928
2	Delaware	151,608	327,363	916,707	1,244,070	1,395,678	1,011,729	72.5%	383,949	383,949
2	District of Col	3,376,198	487,943	1,312,177	1,800,120	5,176,318	3,385,468	65.4%	1,790,850	1,790,850
3	Florida	1,964,892	8,151,680	27,396,455	35,548,135	37,513,027	29,199,550	77.8%	8,313,477	8,311,146
3	Georgia	6,849,404	2,865,837	7,946,962	10,812,799	17,662,203	12,418,949	70.3%	5,243,254	5,243,254
6	Hawaii	1,568,869	696,481	1,948,462	2,644,943	4,213,812	2,854,368	67.7%	1,359,444	1,359,444
6	Idaho	55,299	663,373	2,005,586	2,668,959	2,724,258	2,618,864	96.1%	105,394	105,394
5	Illinois	10,462,765	9,204,676	24,059,905	33,264,581	43,727,346	36,990,126	84.6%	6,737,220	6,737,220
5	Indiana	971,001	2,692,072	7,119,417	9,811,489	10,782,490	8,696,612	80.7%	2,085,878	2,085,878
5	Iowa	649,785	796,382	2,215,077	3,011,459	3,661,244	3,120,636	85.2%	540,608	540,599
5	Kansas	1,158,945	765,929	2,269,312	3,035,241	4,194,186	3,042,068	72.5%	1,152,118	1,152,118
3	Kentucky	2,652,759	1,916,164	6,383,747	8,299,911	10,952,670	5,779,719	52.8%	5,172,951	5,172,951
4	Louisiana	11,495,092	2,698,572	7,755,707	10,454,279	21,949,371	15,623,261	71.2%	6,326,110	6,326,110
1	Maine	96,966	346,970	992,597	1,339,567	1,436,533	1,292,571	90.0%	143,962	143,962
2	Maryland	2,969,930	1,693,218	5,958,683	7,651,901	10,621,831	9,030,728	85.0%	1,591,103	1,591,103
1	Massachusetts	536,918	2,347,113	6,743,294	9,090,407	9,627,325	8,391,235	87.2%	1,236,090	1,236,090
5	Michigan	2,029,465	8,671,444	25,913,908	34,585,352	36,614,817	27,348,955	74.7%	9,265,862	9,265,862
5	Minnesota	824,614	1,559,505	4,305,745	5,865,250	6,689,864	5,998,311	89.7%	691,553	691,553
3	Mississippi	3,778,047	1,857,188	6,452,236	8,309,424	12,087,471	7,218,865	59.7%	4,868,606	4,868,606
5	Missouri	774,546	2,457,942	6,781,773	9,239,715	10,014,261	8,148,023	81.4%	1,866,238	1,866,238
4	Montana	307,015	298,266	824,648	1,122,914	1,429,929	1,264,792	88.5%	165,137	165,137
5	Nebraska	1,112,924	518,520	1,212,503	1,731,023	2,843,947	1,686,603	59.3%	1,157,344	1,157,344
6	Nevada	610,905	1,794,830	2,678,046	4,472,876	5,083,781	3,539,833	69.6%	1,543,948	1,543,948
1	New Hampshire	185,458	359,276	1,519,988	1,879,264	2,064,722	1,858,096	90.0%	206,626	206,626
1	New Jersey	8,139,247	6,189,588	12,918,851	19,108,439	27,247,686	18,936,202	69.5%	8,311,484	8,311,484
4	New Mexico	2,696,857	972,645	2,227,926	3,200,571	5,897,428	5,678,521	96.3%	218,907	218,907
1	New York	29,763,366	12,296,616	33,394,873	45,691,489	75,454,855	63,457,989	84.1%	11,996,866	11,996,866
3	North Carolina	4,645,401	6,198,288	24,855,890	31,054,178	35,699,579	23,323,142	65.3%	12,376,437	12,376,437
4	North Dakota	37,083	164,210	450,581	614,791	651,874	596,109	91.4%	55,765	55,765
5	Ohio	11,489,922	5,641,583	15,876,887	21,518,470	33,008,392	19,436,240	58.9%	13,572,152	13,572,152
4	Oklahoma	1,006,145	967,480	2,916,723	3,884,203	4,890,348	3,608,874	73.8%	1,281,474	1,281,474
6	Oregon	5,318,248	4,035,100	10,588,316	14,623,416	19,941,664	17,765,188	89.1%	2,176,476	2,176,476
2	Pennsylvania	5,844,284	6,459,259	17,512,862	23,972,121	29,816,405	24,449,544	82.0%	5,366,861	5,366,861
1	Puerto Rico	20,133,076	7,522,625	18,646,273	26,168,898	46,301,974	33,354,980	72.0%	12,946,994	12,946,994
1	Rhode Island	117,947	370,833	1,022,672	1,393,505	1,511,452	1,247,749	82.6%	263,703	263,703
3	South Carolina	1,934,257	2,415,886	6,523,078	8,938,964	10,873,221	8,009,922	73.7%	2,863,299	2,863,299
4	South Dakota	22,279	248,780	683,256	932,036	954,315	737,580	77.3%	216,735	216,735
3	Tennessee	2,767,249	2,489,925	7,054,894	9,544,819	12,312,068	8,346,019	67.8%	3,966,049	3,966,048
4	Texas	6,473,382	17,350,165	45,126,452	62,476,617	68,949,999	54,848,668	79.5%	14,101,331	14,101,331
4	Utah	1,566,870	1,392,768	3,734,696	5,127,464	6,694,334	4,711,893	70.4%	1,982,441	1,982,441
1	Vermont	6,238	249,242	819,069	1,068,311	1,074,549	1,074,549	100.0%	0	-
2	Virginia	1,863,708	2,014,883	5,626,433	7,641,316	9,505,024	6,465,715	68.0%	3,039,309	3,039,309
6	Washington	6,594,019	7,797,820	17,641,978	25,439,798	32,033,817	24,686,190	77.1%	7,347,627	7,347,627
2	West Virginia	4,986,543	997,077	2,894,302	3,891,379	8,877,922	7,280,796	82.0%	1,597,126	1,597,126
5	Wisconsin	1,368,443	2,786,107	7,674,627	10,460,734	11,829,177	9,556,146	80.8%	2,273,031	2,273,031
4	Wyoming	462,482	190,913	596,288	787,201	1,249,683	958,208	76.7%	291,475	291,475