

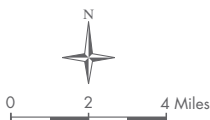
Legend

- Surveyed Basin
- Major Road
- Stream
- Lake

Produced in cooperation with:

Bellevue Stream Team
 City of Bothell
 City of Issaquah
 City of Kirkland
 City of Redmond
 City of Renton
 City of Woodinville
 City of Seattle
 Vashon-Maury Island Land Trust
 Lake Washington/Cedar/Sammamish Watershed (WRIA8) Forum
 With support from the King Conservation District

The information included on this map has been compiled from a variety of sources and is subject to change without notice. King County makes no representations or warranties, express or implied, as to accuracy, completeness, timeliness, or rights to the use of such information. King County shall not be liable for any general, special, indirect, incidental, or consequential damages including, but not limited to, lost revenues or lost profits resulting from the use or misuse of the information contained on this map. Any sale of this map or information on this map is prohibited except by written permission of King County.



Map produced by DNRP GIS Unit,
 WLR Visual Communications & Web Unit,
 and WLR Watershed Assessment Unit.
 File Name: 0804Fig1surveyBASINS.ai vgwab

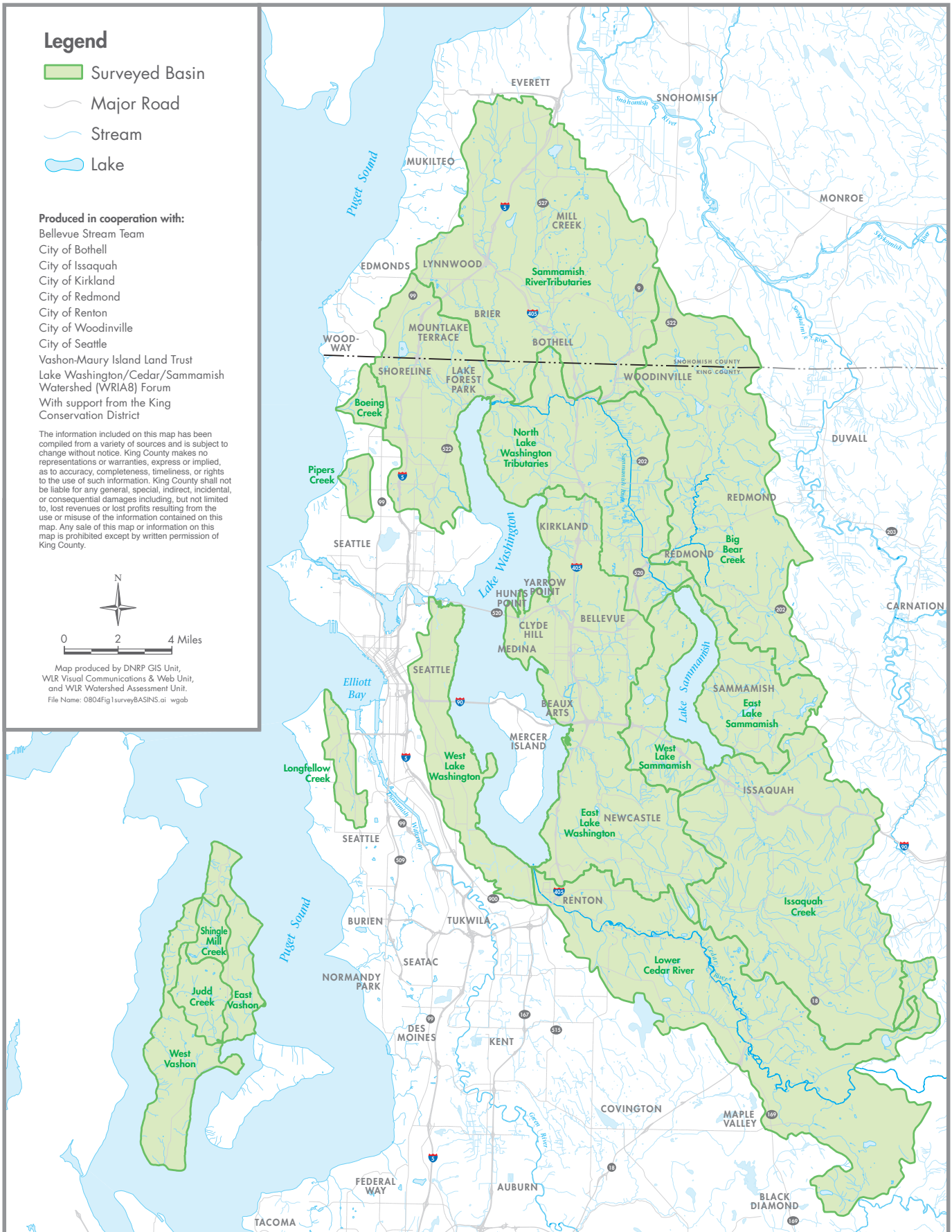


Figure 1

BASINS SURVEYED FOR THE 2006 SALMON WATCHER PROGRAM

2007 Volunteer Salmon Watcher Program



King County

Department of
 Natural Resources and Parks