

**Legend**

**Chinook Thoroughfares as Observed by Salmon Watcher Volunteers**

- 2000: Most Upstream Survey Site
- ~ Waters Traversed: 2000
- ⊛ 1996-1999: Most Upstream Survey Site
- ~ Waters Traversed: 1996-1999
- ⊛ 1996-1999 and 2000: Most Upstream Survey Site
- ~ Basin Boundary
- ~ Stream
- ~ Major Road
- ~ Lake
- ~ Incorporated Area

The data used in this map are based on volunteer salmon surveys conducted in the fall of the years 1996 through 2000. Survey methods were sometimes different in 1996. These data reflect fish presence as observed by volunteers. For further discussion, see text.

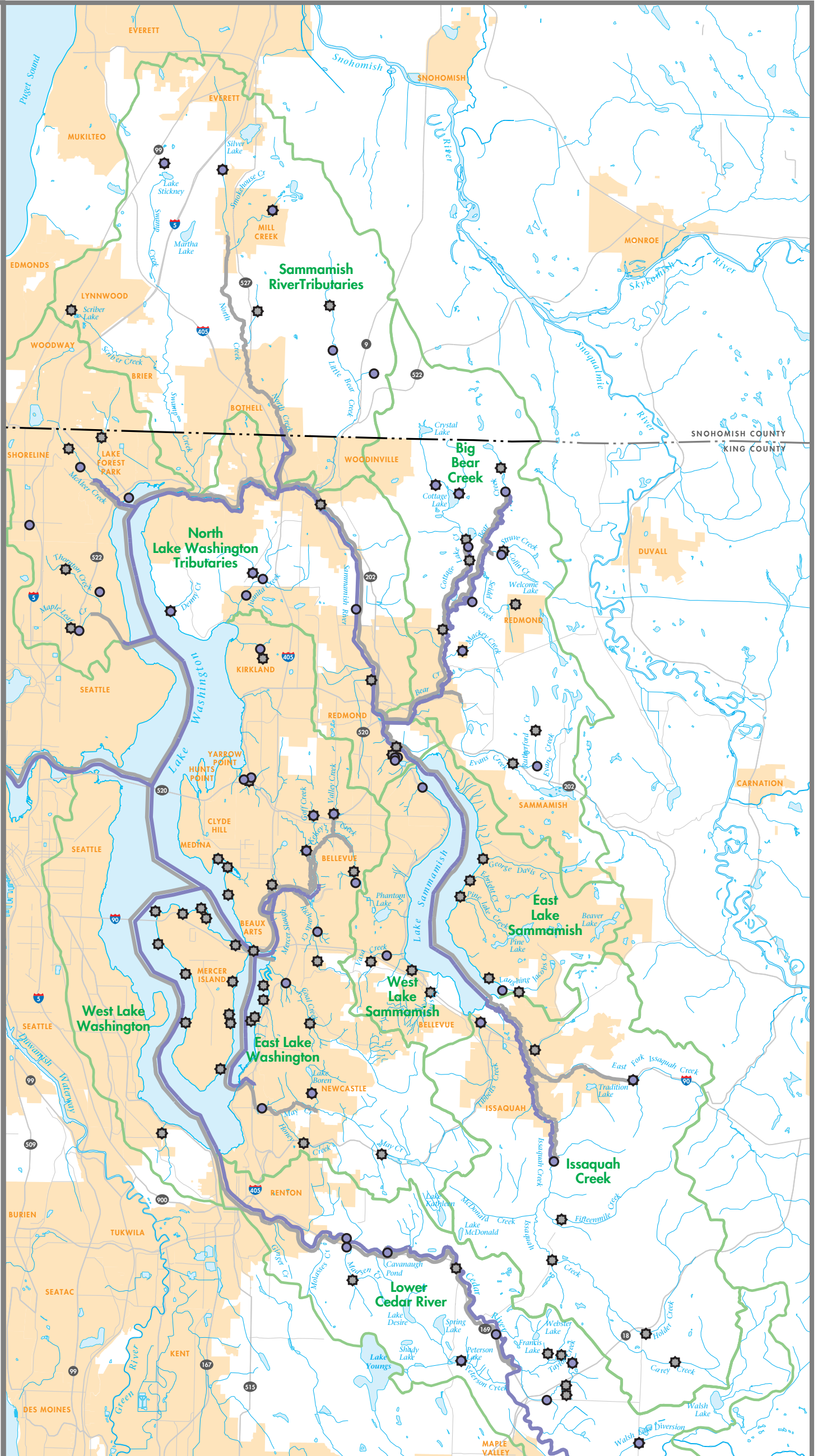
Produced in cooperation with  
 Sammamish Watershed Forum  
 Bellevue Stream Team  
 City of Kirkland  
 City of Renton  
 City of Woodinville  
 City of Seattle  
 Snohomish County Surface Water Management  
 Washington State Department of Fish and Wildlife  
 The Muckleshoot Indian Tribe Fisheries Department



0 2 4 Miles

Map designed and produced by the GIS & Visual Communications Unit, Water and Land Resources Division.

File Name: 0105ChinookDistribution.eps WC



**OBSERVED ADULT CHINOOK DISTRIBUTION**  
 2000 Volunteer Salmon Watcher Program

Figure 14