

Pribilof Islands ERP
St. George Island
Restoration Advisory Board

September 24, 2002

St. George, Alaska

Summary of 2001 Site Characterization Work

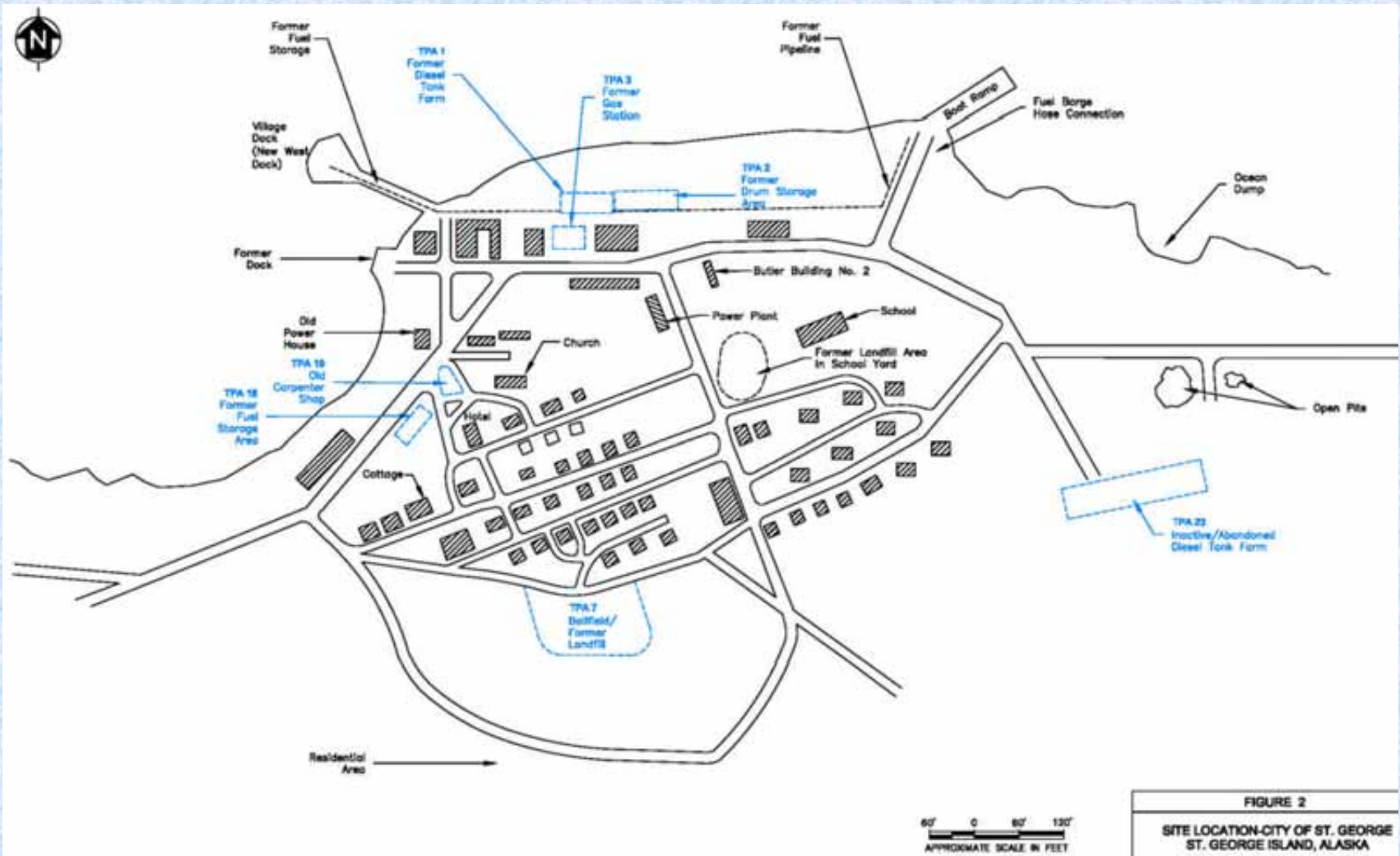


FIGURE 2
SITE LOCATION-CITY OF ST. GEORGE
ST. GEORGE ISLAND, ALASKA
TERRATECH INC.

2001 Characterization

- Old Carpenter Shop (TPA 19)
- Inactive Diesel Tank Farm (TPA 23)
- Former Fuel Storage Area (TPA 18)
- Ballfield/Landfill (TPA 7)
- Oceanfront Sites (TPAs 1, 2, and 3)
- Active Power Plant (TPA 8)

Old Carpenter Shop (TPA 19)

- Soil borings at 7 locations, advanced up to 4-feet below ground surface (bgs)

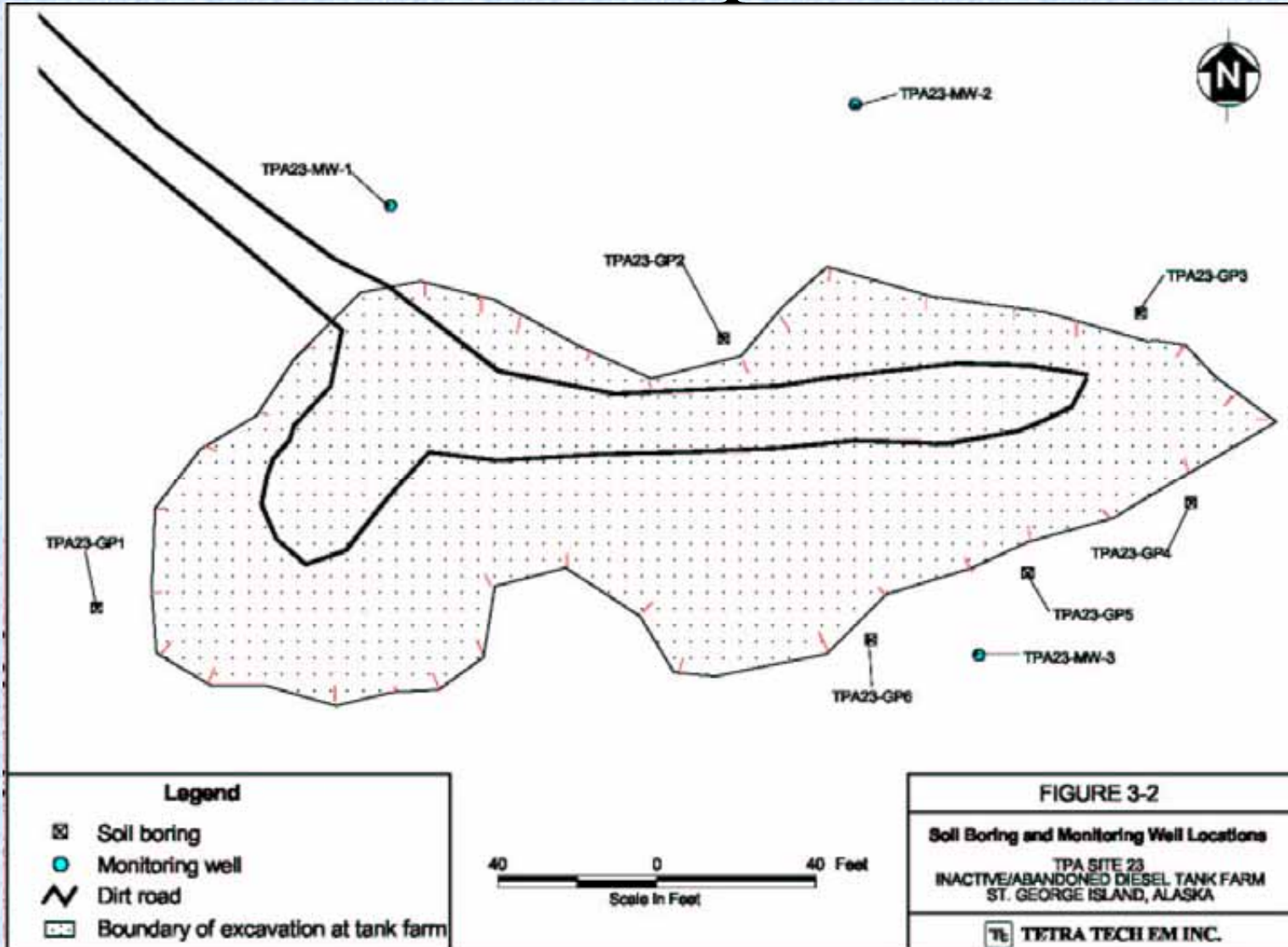
Old Carpenter Shop (TPA 19) cont'd...

- 13 soil samples analyzed for GRO, DRO, RRO, VOCs, SVOCs, and heavy metals
- Only contaminant found above Method 2 cleanup level and site background was lead (1,200 mg/kg) in just one sample (TPA19-GP1)
- Recommended more samples to delineate extent of lead contamination prior to any corrective action

Inactive Diesel Tank Farm (TPA 23)

- Soil borings at 6 locations on perimeter of excavation, advanced up to 5.9 bgs
- 12 soil samples analyzed for GRO, DRO, RRO, VOCs, SVOCs, and heavy metals
- Three groundwater monitoring wells installed
- Groundwater samples analyzed for GRO, DRO, VOCs, SVOCs, and heavy metals

TPA 23: Soil Sample Locations



Inactive Diesel Tank Farm (TPA 23) cont'd...

- Soil: No contaminants found above Method 2 cleanup levels and site background levels
- Groundwater: No contaminants found above Table C cleanup levels
- Recommended backfilling excavation and continued groundwater monitoring

Inactive Diesel Tank Farm (TPA 23) cont'd...

- Additional soil sampling will be performed since last year's samples weren't collected deep enough to fill data gaps

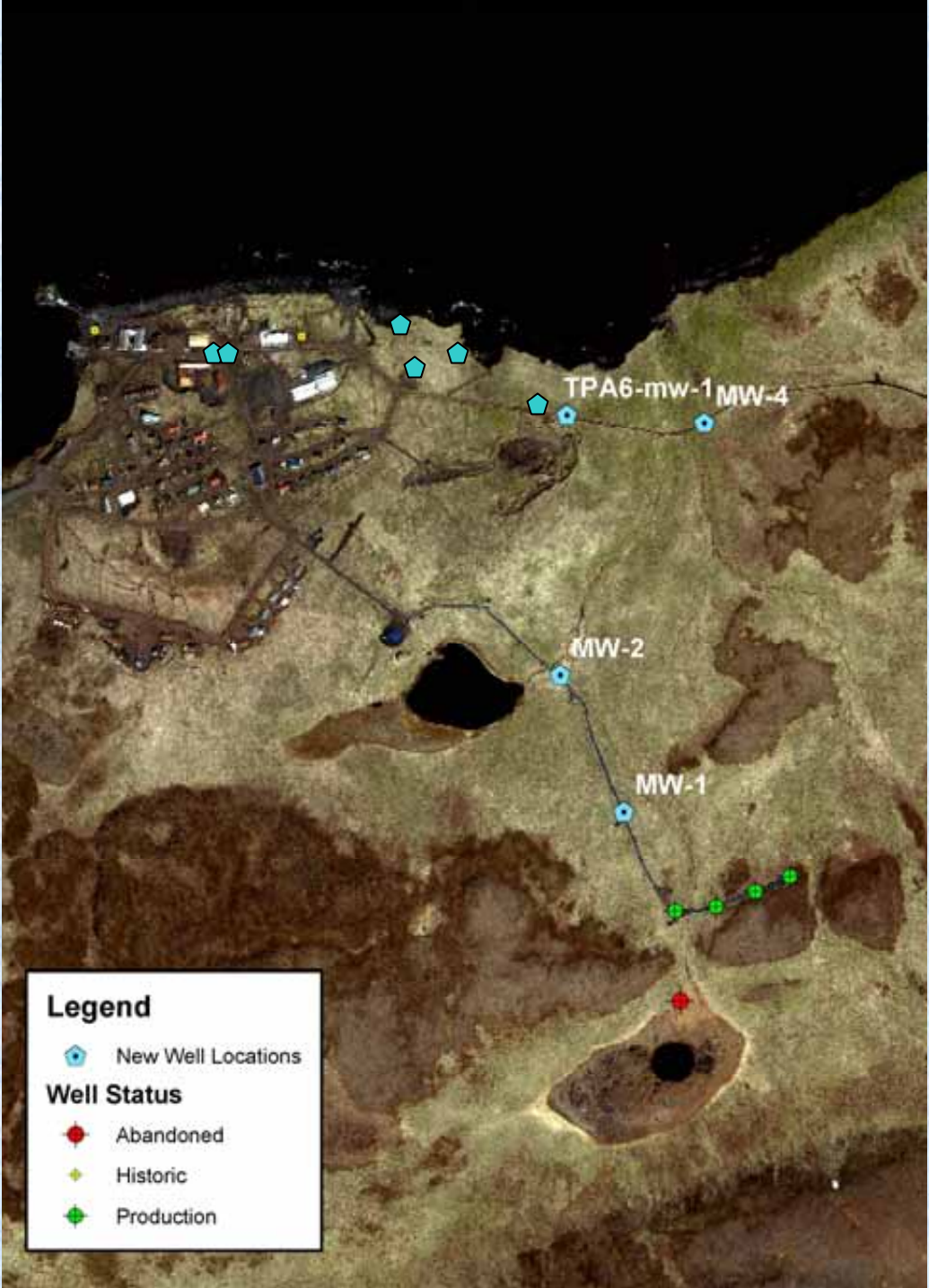
Other TPA Site Investigations

- Former Fuel Storage Area (TPA 18) – Draft SCR to be mailed this week
- Ballfield/Landfill (TPA 7) – Draft SCR due this week
- Oceanfront Sites (TPAs 1, 2, and 3) – Draft SCR due next week
- Active Power Plant (TPA 8) – Found floating layer of diesel and PCE near city office; additional soil and GW investigation soon

END

Planned Site Characterization Work 2002/2003


- Additional Groundwater Monitoring Wells





Legend

 New Well Locations

Well Status

 Abandoned

 Historic

 Production

Planned Site Characterization Work 2002/2003 cont'd...

- Groundwater Network Monitoring, Hydrogeologic Evaluation
- Floating Product Source Investigation at Tanaq Shop, City Office (TPA 8, 22-2)
- Deeper Soil Sampling at Inactive Diesel Tank Farm (TPA 23)
- Soil Sampling at Old Power Plant and Former Fuel Storage Area to Support CAP Preparation (TPA 9 and 18)