

STUART YAMADA SELECTED AS NEW SDWB BRANCH CHIEF

“Aloha! What better way to mark the end of an era by taking a quote from an old Chinese philosopher: “Whoa. This chart shows the increasing number of contaminants regulated since the Safe Drinking Water Act was passed in 1974. The number of drinking water regulations is just unbelievable. Gimme a break!”

It is not hard to see that drinking water rules are becoming more involved and require greater commitment by everyone in the drinking water industry. While Safe Drinking Water Branch continues to perform or coordinate the bulk of the regulatory monitoring throughout the State, we must increasingly rely upon each of you to understand how new rules may apply to your specific sources and systems. We must work together to help maintain the high level of compliance already achieved by Hawaii public water systems and is deserved by the general public that we all serve. While it is true that drinking water requirements will never be as simple as they once were, we are fortunate in that the majority of Hawaii’s drinking water supplies continue to be far better than the “minimum” standards established by the federal government. We can say this with confidence because of the monitoring and testing performed by both the water utilities and the Department of Health.



Please be assured that even with the change in leadership, the heart and soul of the Safe Drinking Water Branch, continues to be our staff who are dedicated to their mission of verifying drinking water quality throughout the State of Hawaii, protecting public health and the environment. We will continually strive to be consistent, fair, and accurate.

It is an honor to be part of an organization made up of committed and caring individuals like the Safe Drinking Water Branch. It is equally an honor to have worked with outstanding individuals representing water utilities, labs, consulting firms, developers, etc. who truly care about the quality of the water that they develop and serve. I am indebted to many like Andy, Ann, Bea, Brian, Cari, Chauncey, Dan, Dennis, Don, Duke, Earl, Elsie, Eric, Erwin, Fritz, Gail, Gayle, George, Glenn, Greg, Harold, Ian, Ivan, Jeff, Jodi, Keith, Kevin, Larry, Lauren, Mae, Mary, Mel, Mike, Myron, Nick, Norman, Owen, Paul, Richard, Rick, Roger, Ron, Steve, Take, Tom, Wanda, Wayne, Will (just to name a few), who have generously shared their knowledge and enthusiasm. While I am taking a new role within the Safe Drinking Water Branch, I am still the same person who has learned so much from others before me and will strive to make improvements. I look forward to the many challenges that await our attention with the continued spirit of cooperation and understanding of everyone we work with.”

Stuart Yamada became the new Safe Drinking Water Branch Chief, effective June 1, 2006.

SDWB NOTES: FAREWELL TO SHANNON FITZGERALD



After 16-plus years as an EPA employee and partner in Hawaii’s water protection programs (through the years, as Hawaii’s Underground Injection Control Program, Groundwater Protection Program, and Source Water Assessment and Protection Program Project Officer and also as part of EPA’s Hawaii large capacity cesspool team), Shannon Fitzgerald will be leaving the San Francisco office of the United States Environmental Protection Agency to take on the challenges of local/city government life in Washington. The Safe Drinking Water Branch will miss a true friend and the State of Hawaii will miss a true partner in Hawaii’s water protection. The staff of the Safe Drinking Water Branch wish Shannon the best as she pursues life’s next chapter - we will miss you!!

APRIL DISTRIBUTION SYSTEM OPERATOR EXAM RESULTS

Exam results. The 1st 2006 Distribution System Operator (DSO) certification exams were held on Oahu, Maui, and the Big Island (Hilo and Kona) in late April. Eighty-four operators sat for the exam, and 40 passed for a passing rate of 48%. The passing rate was lower than the rate for October 2005 (73%), but higher than that for April 2005 (34%). The breakdown by grade is as follows:

Grade	Passed	# of Examinees	Passing Rate	Passing Rate - Oct 05
1	20	38	53%	83%
2	11	26	42%	68%
3	2	3	67%	50%
4	7	17	41%	64%
total	40	84	48%	73%

Congratulations to those operators who passed the exam, and to everyone who took the time to study!

2006 and early 2007 exam dates. Please make note of upcoming exam dates and deadlines:

Certification exam	Applications Due	Exam Date
Water Treatment Plant Operator (WTPO)	4/25/06	7/25/06
DSO	7/31/06	10/31/06
WTPO	10/30/06	1/30/07

CEU approval. If your DSO certification expires on 11/30/06, you were mailed a renewal reminder in early May, along with a listing of your CEUs recorded to date. If you need to have other CEUs *approved* and recorded, please fill out the Course Approval form (purple) and send it in as soon as possible. The Board of Certification must review and approve CEUs for credit, and the board only meets quarterly (in February, May, August and November). *WTPOs should receive their reminders in June.*

If you need to *take* courses for CEUs, you can refer to the pink "Approved CEUs" sheet for ideas. **The UH Outreach College taught seven courses last August, and will teach more courses this summer.** Several other options available now are: AWWA-Hawaii section workshops, Statewide Wastewater Operator Training Center courses, correspondence courses through California State University at Sacramento (CSUS), or online courses through AWWA and CSUS.

As you know, we've revised our internal CEU tracking system so that 10 contact hours equals one "CEU-10". We changed the system to simplify the conversion of contact hours to CEUs, and also because most other states use the 10-hour standard. *The number of contact hours you must earn to renew will remain the same as it has been.* Grade 1 or 2 operators will need eight contact hours (0.8 CEU-10s). Grade 3 or 4 operators will need 16 contact hours (1.6 CEU-10s) per two-year renewal period.

Application for certification. You can download copies of the DSO or WTPO certification application form (and exam registration form) from the DOH SDWB website at: <http://www.hawaii.gov/health/environmental/water/sdwb/index.html>. You can also call Kumar Bhagavan or Ann Zane at 586-4258 for copies of these forms.

UPDATE OF EPA LARGE CAPACITY CESSPOOL BAN IMPLEMENTATION

As part of the ongoing outreach and compliance effort, EPA and DOH has jointly placed the following advertisement in the local newspapers.



The advertisement features a black background with white text and logos. At the top left is the EPA logo, and at the top right is the State of Hawaii logo. The main title is 'Cesspool Deadline is PAU'. Below it, a paragraph states: 'Large Capacity Cesspools are illegal and discharge raw sewage directly into the ground which can contaminate your drinking water, streams and the ocean.' In the center is a white warning sign with a black border. The sign has a large exclamation mark and the word 'WARNING' in bold. Below this are three circular icons: a fish with a slash, a person with a slash, and a swimmer with a slash. The text on the sign reads: 'KEEP OUT OF WATER NO SWIMMING • NO FISHING Sewage contaminated water. Exposure to water may cause illness.'

**Cesspool
Deadline is PAU**

Large Capacity Cesspools are illegal and discharge raw sewage directly into the ground which can contaminate your drinking water, streams and the ocean.

WARNING

**KEEP OUT OF WATER
NO SWIMMING • NO FISHING**

Sewage contaminated water.
Exposure to water may cause illness.

Mandatory closure of cesspools located at:

- commercial properties serving 20 or more persons a day

OR

- residential properties serving multiple dwellings, such as condominiums, apartment buildings and homes with ohanas

The advertisement was placed in the following newspapers: Hawaii Tribune Herald, West Hawaii Today, Maui News and the Garden Isle on June 14, 19, 21, and 27th; and in the Honolulu Advertiser on June 14.

The website at www.epa.gov/region09/hicesspools has also been updated to include success stories and a simple question and answer to make it easier for web visitors to determine if the rule applies to them.

As part of a Department of Health multi-program effort to address on-site disposal systems and its impact of the environment, the Safe Drinking Water Branch is participating in this effort through the following activities:

- (1) **On-Site Disposal System Training To be Developed**
Funding Source: *Clean Water Act Supplemental 106* **Funding Amount:** *\$50,000*
Groundwater Protection

The State of Hawaii is reliant on groundwater for most of its drinking water needs. On-site disposal systems (OSDS) are used throughout the state. The Hawaii Department of Health has estimated that there are more than 170,000 on-site wastewater systems statewide, the vast majority are cesspools. However, there are more than 12,000 on-site septic systems and other types of wastewater treatment units, aerobic units, cavittetes and small package plants used throughout the state. Many new septic systems are being installed to comply with the federal ban on large capacity cesspools. Proper operations and maintenance of these treatment units is critical to protect water resources. Malfunctioning on-site wastewater disposal systems can not only affect groundwater but surface water, too. Recreational use of surface water is a critical part of the State's economy. As such, it is important for state and county officials and program staff to understand the use, operations and proper management of on-site wastewater disposal systems as they are used in Hawaii.

The training is to provide compliance assistance to government operators of on-site wastewater disposal systems, specifically septic systems and aerobic treatment units at beach parks, schools, and residential housing such that they have the technical knowledge and understanding of OSDS to address immediate needs as well as future efforts. The training excludes cesspools and small package plants. The training will reflect the wastewater characteristic and wastewater systems used in Hawaii.

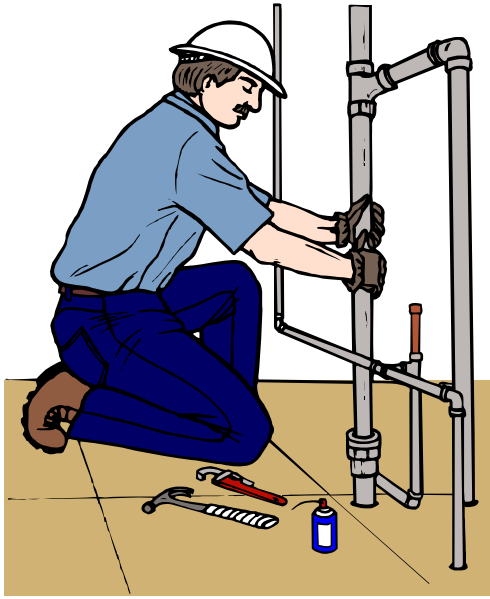
- (2) **OSDS Inspections within Source Water Protection Areas**
Funding Source: *Drinking Water State Revolving Fund* **Funding Amount:** *\$25,000*
15% Set-aside (Wellhead Protection)

The Hawaii Department of Health, Safe Drinking Water Branch will also initiate two efforts in FY2007 to address inspections of OSDS. It is important to note that agriculture and OSDS are the primary water quality threat to source water areas. The first effort will conduct on-site inspections and clean water sanitary surveys of OSDS within source water protection areas. The project will determine OSDS impact to source water areas but will also provide valuable information concerning the performance-based OSDS inspections techniques and assist with developing "profiles" for problematic OSDS that may have state-wide applications. **If successful, additional funding may be made available to continue these activities.**

- (3) **OSDS Homeowners Training and Information**
Funding Source: *Drinking Water State Revolving Fund* **Funding Amount:** *\$22,000*
15% Set-aside (Wellhead Protection)

The Hawaii Department of Health, Safe Drinking Water Branch will also support an effort to provide educational materials and training for homeowners regarding OSDS. The end user of the OSDS requires education on the necessity of the performance of regular system evaluation and maintenance to include discouraging the use of phosphates in detergents, elimination of the use of garbage disposals, and discouraging the use of acid and organic chemical solvents septic system additives. It is suggested that brochures documenting this information with a mailback option to the State be distributed on all islands via water bills, as the counties are able to screen users connected to the sewer system and those using on-site disposal systems by default. The brochures may also include information on self-evaluation of OSDS systems for simple and obvious signs of failure. **If successful, additional funding may be made available to continue these activities.**

The other Department of Health programs participating in the on-site disposal system (OSDS) effort include; the Wastewater Branch and the Clean Water Branch.



Water system personnel interested in backflow prevention assembly tester training classes should contact Guy Yasuda at (808) 748-5470, fax at (808) 550-5550, or via email at cccu@hbws.org.

Additional information may be obtained at the following website: <http://www.hbws.org>

TENTATIVE SCHEDULE

September 11-15, 2006
Certification Class

October 5-6, 2006
Optional practice day (October 4, 2006)
Re-Certification Class

January 11-12, 2007
Optional practice day (January 10, 2007)
Re-Certification Class

February 12-16, 2007
Certification Class

March 15-16, 2007
Optional practice day (March 14, 2007)
Re-Certification Class

April 12-13, 2007
Optional practice day (April 11, 2007)
Re-Certification Class

May 14-18, 2007
Certification Class

June 21-22, 2007
Optional practice day (June 20, 2007)
Re-Certification Class

July 12-13, 2007
Optional practice day (July 11, 2007)
Re-Certification Class

August 6-10, 2007
Certification Class

September 13-14, 2007
Optional practice day (September 12, 2007)
Re-Certification Class

October 18-19, 2007
Optional practice day (October 17, 2007)
Re-Certification Class

DOH/SDWB NOTES: ITS HURRICANE SEASON

Hurricane season in Hawaii begins in June and runs through November. Water systems should be prepared and review their emergency response plan and make sure it and contacts are current. Also prepare emergency supplies and materials by making that equipment and instruments are working properly and that you have adequate supplies of first-aid items, batteries, flashlights, and non-perishable food and water for essential personnel.

Addition suggested pre-hurricane activities for water and wastewater facilities may be found at:

www.epa.gov/safewater/hurricane/pre-hurricane.html

Please send your suggestions, ideas, questions or comments to:

THE WATER SPOT 2006
Safe Drinking Water Branch
State Department of Health
919 Ala Moana Blvd., Room 308
Honolulu, Hawaii 96814

Fax us at (808) 586-4351,
Attn: "THE WATER SPOT 2006"

SDWB WEB SITE:
<http://www.hawaii.gov/health/environmental/water/sdwb>

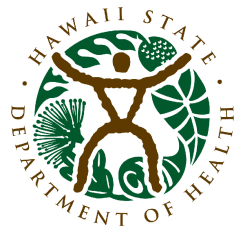


LINDA LINGLE
Governor of Hawaii

CHIYOME LEINAALA FUKINO, M.D.
Director of Health

LAURENCE K. LAU
Deputy Director for Environmental Health

We provide access to our activities without regard to race, color, national origin (including language), age, sex, religion, or disability. Write or call our Affirmative Action Officer at Box 3378, Honolulu, HI 96801-3378 or at (808) 586-4616 (voice) within 180 days of a problem.



The Water Spot 2006 (July 2006)
Safe Drinking Water Branch
Environmental Management Division
Hawai'i Department of Health
919 Ala Moana Boulevard, Room 308
Honolulu HI 96814

On the Spot:

New SDWB Branch Chief Selected.....	1
Farewell to Shannon Fitzgerald.....	1
Results of April Operator Certification Exam.....	2
LARGE CAPACITY CESSPOOL Deadline is PAU.	3
SDWB Working with DOH Programs to	
Improve On-Site Disposal System Issues.....	4
BWS CCCS BFPA Tester Training Schedule.....	5
DOH/SDWB Notes: Its Hurricane Season.....	6