

*Welcome Brochure*

*NASA Dryden Flight Research Center*

# ***NASA Dryden Flight Research Center***

## ***Mission***

- *Perform flight research and technology integration to revolutionize aviation and pioneer aerospace technology.*
- *Validate space exploration concepts.*
- *Conduct airborne remote sensing and science missions.*
- *Support operations of the Space Shuttle and the International Space Station – for NASA and the nation.*

## ***Vision***

- *To fly what others only imagine.*

## ***Values***

- *Commitment to Safety — Personal Integrity — Honor Commitments — Achieve Goals — Treat Each Other as Customers — Personal Leadership — Customer Satisfaction*

## Table of Contents

Welcome .....	4
Hours of Operation .....	5
Buildings and Facilities .....	5
Health Unit .....	8
Cafeteria .....	11
Parking .....	11
Safety .....	12
Smoking .....	14
Telephones .....	14
Getting to Dryden .....	14
Maps .....	6, 15-18
Entrance to Dryden .....	16
Badges and Decals .....	16
Registering your Vehicle .....	18
Driving and Speed Limits .....	19
History .....	19
Physical Tours .....	20
The Local Area .....	20
Where to Live .....	21
Employee Benefits .....	27
Pay .....	29
Leave/Holidays .....	29
Employee Development .....	29
Organizational Charts .....	30
Directory Information and Frequently Called Numbers .....	31
Emergency Information .....	34
On-Base Amenities .....	34
Child Care .....	36
Eating Establishments .....	36

## Welcome to Dryden

Welcome to the NASA Dryden Flight Research Center. As you may know, since 1946 engineers and pilots from NASA and its predecessor, the National Advisory Committee for Aeronautics, have been conducting pioneering flight research above Rogers Dry Lake and the Mojave Desert. Our proud heritage includes the X-1, X-15, Lunar Landing Research Vehicle, F-8 Digital Fly-By-Wire, F-8 Supercritical Wing, the Space Shuttle, and many other research vehicles that have contributed enormously to the nation's aerospace technologies.

Dryden's men and women have played a major role in developing and maturing these vehicles and passing on the technologies they have researched. Dryden is ready to make even greater contributions in the future. You have a wonderful opportunity to join in that great tradition and make your own contributions to keeping America in the forefront of advancing aerospace technology.

You will be combining your talents and training with those of a great many first-rate engineers, technicians, and people in various other fields who work together to advance aerospace science and technology through flight research. Dryden has always been a small but important part of NASA and a great and inspiring place to work. In the words of our namesake, Dr. Hugh L. Dryden, we "separate the real from the imagined problems and . . . make known the overlooked and unexpected problems."

I look forward to meeting you and observing your own contributions to Dryden's, NASA's, and the country's progress in aerospace technology.

Once again, welcome.

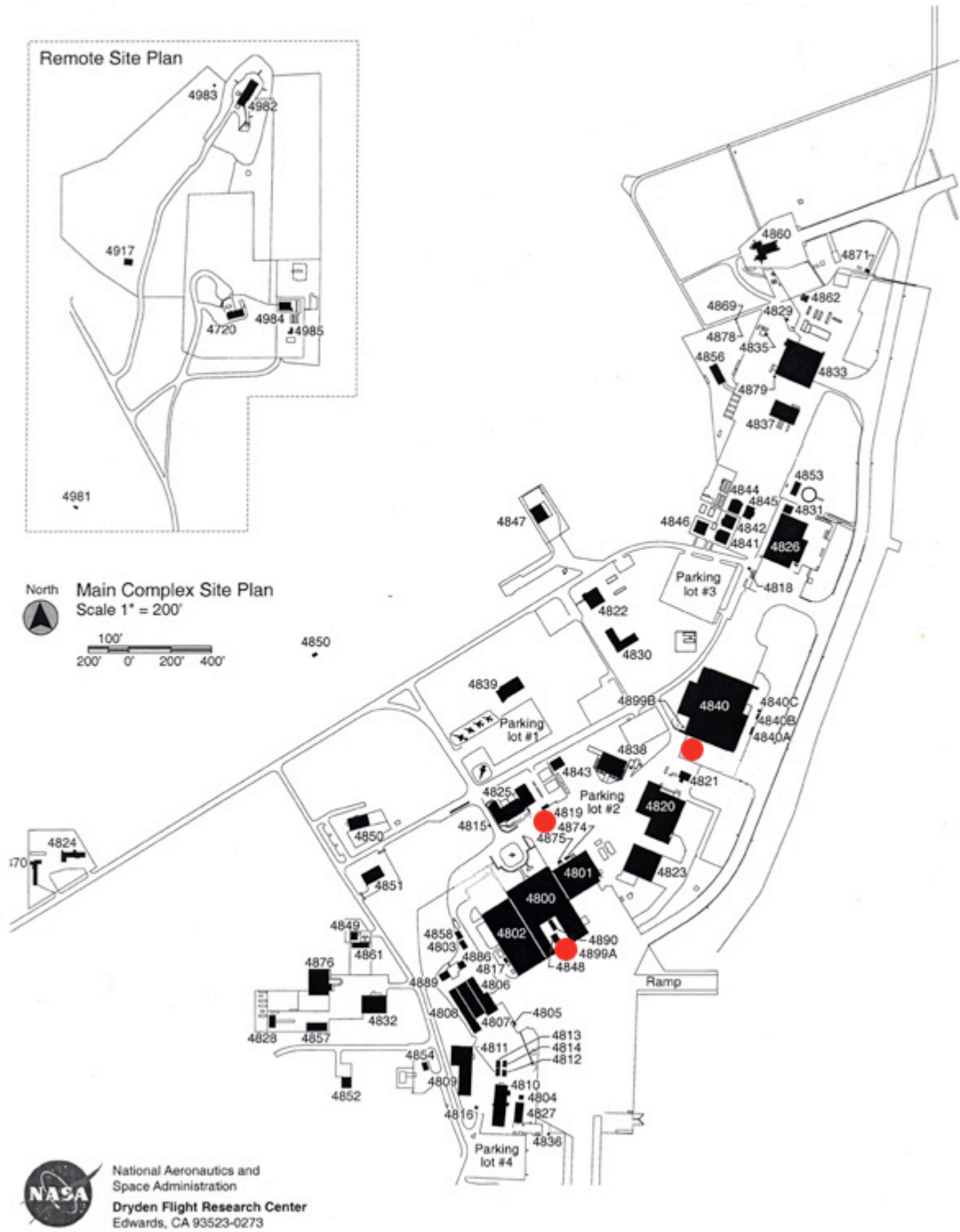
Kevin L. Petersen  
Director, Dryden Flight Research Center (DFRC)

**Hours of Operation** — DFRC's official hours of business are Monday-Friday, 7:30 a.m. to 4:00 p.m. but many people normally work from 7:00 a.m. to 3:30 p.m. and others start and end their work day at later times (or even earlier when flight projects require unusual hours). Check with your supervisor to find out what your normal working hours should be.

**Buildings and Facilities** — Dryden is one of NASA's smallest centers, operated as a tenant organization on Edwards Air Force Base at the northwest corner of Rogers Dry Lake. Dryden Headquarters (Bldg. 4800), contains the Center Director's Office, Flight Operations, and many other offices. This building forms the nucleus or hub of Dryden activities. When you first report to DFRC, you will obtain a badge from the Visitor Center (Bldg. 4825) and report to room 2407 on the second floor of Bldg. 4800 (Human Resources) for inprocessing. (See map below.)

Human Resources is in Bldg. 4800, Rm. 2407, telephone 661-276-7000. This is where employees come to fill out and sign their initial forms before reporting to their supervisor. Here, you will meet with your Employee Services Representative in the Human Resources office to complete paperwork necessary to set up your personnel record, establish your benefits and generate payroll information. You must also take an Oath of Office if this is a new federal appointment for you.

# Dryden Site Map



## Other Facilities

Along with a varied fleet of research and support aircraft, Dryden facilities include a high temperature and loads calibration laboratory to ground test aircraft and structural components for the combined effects of loads and heat (Bldg. 4820); a highly developed aircraft flight instrumentation capability; a flow visualization facility to study flow patterns on models and small aircraft components; a data analysis facility to process flight research data; and a facility to carry out flight research with remotely piloted vehicles.

Dryden's Research Aircraft Integration Facility (RAIF, Bldg. 4840), which became operational in 1992, is used to carry out simultaneous checks of flight controls, avionics, electronics and other systems on a variety of aircraft. It is the only facility of its type in NASA and is designed to speed up and enhance systems integration and preflight checks on all types of research aircraft. Working in these facilities has given Dryden pilots, engineers, scientists, and technicians a unique and highly specialized capability to conduct flight research programs unmatched anywhere in the world. Many engineering offices are also located in the RAIF, as is the Avionics Laboratory.

In addition, more than 12,000 square miles of special-use airspace over California's high desert are available for research flights. Agencies monitoring flights in the area are linked directly to the Western Aeronautical Test Range (WATR). The WATR provides tracking and data acquisition support through a highly automated complex of computer-controlled tracking, telemetry, and communications systems and control room complexes.

Among other important buildings at Dryden are:

Dryden Headquarters (Bldg. 4800). Besides containing the Center Director's Office, Flight Operations, and many other offices, this building forms the nucleus or hub of Dryden activities.

Aircraft Construction and Modification Hangar (Bldg. 4801)

## Dryden's Main Hangar (Bldg. 4802)

Health Unit (Bldg. 4822): This building also houses a Shuttle support facility, but that is normally used only when a Space Shuttle has landed at Edwards. The Health Unit is open 7:30-4:00 with a nurse on site from 6:00 to 7:30 in case of an emergency. The Health Unit staff primarily serves civil servants, but it will treat contractors for job-related health concerns and emergencies. For civil servants, the Health Unit provides job certification physicals, treats workplace illnesses and injuries, and provides travel clearances. It provides health education, promotion, and screening, including periodical physicals.

Fitness Center: Located right behind the Health Unit, the Fitness Center is open 9:00 a.m. to 5:00 p.m. For information about it, see the Dryden Intranet at <http://xnet.dfrc.nasa.gov/EmployeeInfo/Fitness/index.html> . Dryden employees wishing to use the Fitness Center must first undergo a Gym Clearance Physical at the Health Center. Call extension 3570 to set up an appointment.

The Fitness Center is open to all Dryden employees Monday thru Friday from 9:00 am to 5:00 pm. If you have any questions please contact Amy Marston at ext.2261.

Fabrication Branch (Bldg. 4823), containing a sheet metal shop, a welding/heat treating shop, a machine shop, and a hydraulics shop with a servicing bay for aircraft.

Integrated Support Facility (Bldg. 4825), containing an auditorium, cafeteria, visitor center, and security post 1 of Dryden Security.

Aircraft Maintenance Hangar (Bldg. 4826)

Research Engineering Support Facility (Bldg. 4830A, B, C, D, E), actually five different buildings with offices for engineers.

Warehouse #7 (Bldg. 4832), one of several storage buildings in the area between Gates #29 and 30, but this one also includes Dryden's mail operations area (mail room).



Shuttle Support Office (Bldg. 4845), which directs Shuttle support, including lots of personnel who fly in from Johnson and Kennedy Space Centers to support the Shuttle when it lands at Edwards. People who require access to Area A on their badges must come to this building to get a signature from the Area A manager.

Shuttle Hangar and shops (Building 4833), the largest building in Area A, which services the Space Shuttle when one lands at Edwards.

Data Analysis Facility (DAF, Bldg. 4838), the hub of the local area network and the place where postflight data is stored. The Dryden phone system is centered in this building, which also provides tape and video storage for the Center.

#### Payroll:

The payroll function is split between Human Resources and Financial Management. For questions involving time cards and WebTADS, employees can go to Rm. 1013 of Bldg. 4800 (phone numbers X3306 or X2659). For other matters involving payroll, they can contact Human Resources in Rm. 2407 of Bldg. 4800 (phone number X2099).

#### Technical Order (or Documentation) Library:

In Rm. 1114 of Bldg. 4800, there is a library with technical publications relating to aircraft maintenance.

#### Reference Library:

Dryden also has a Reference Library in Rm. 2412 of Bldg. 4800, with books, technical reports, periodicals, and other reference material of a more general nature. It also offers interlibrary loan services and DFRC telephone books.

#### Photo Lab:

In Rm. 1022 of Bldg. 4800, Dryden has a full-service photo lab that produces and develops work-related products from passport photos to engineering documentation and in-flight photography.

## Graphics:

Located in Rm. 1704, near the photo lab, is the Dryden Graphics Shop. It is a full-service art department covering every graphic need from camera-ready research-report art through high-end poster, brochure, and exhibit design.

## Reproduction:

Dryden's Reproduction shop is in Rm. 1708 of Bldg. 4800. Mostly a quick copy operation, with longer lead times it can reproduce technical drawings and, to a limited extent, color documents.

## History:

In rooms 1611 and 1613 of Bldg. 4800 and in Bldg. 4839 is the Dryden History Office. It includes a large historical reference collection where employees and other researchers can gather valuable information about past projects beginning with the X-1 as well as Dryden's administrative history. Included is a collection of back issues of the *X-Press* that, together with other documents, allows reconstruction of much that went on at Dryden. Many past projects are very relevant to current research, so engineers working on current projects can benefit from what their predecessors did and learned. The history office sponsors histories of Dryden, and copies of these are available in Bldg. 4839. If you want to propose a history that has not yet been written, this is the place to begin.

## Technical Publications:

Dryden's Technical Publications Office in Rm. 1718 of Bldg. 4800 edits, formats, and archives technical reports, conference papers, and journal articles. It also maintains the technical reports server for the Center. Before bringing a report, paper, or article to Technical Publications, the author(s) must take it to the Aeronautics Branch Office in Rm. 2228 of Bldg. 4800 for coordination with the Engineering Directorate and Export Control and then have it peer reviewed. Forms obtained from the Aeronautics Office will need appropriate signatures before Technical Publications will accept a document for editing. Calling Aeronautics at X3135

and Tech Pubs. at X3587 before beginning the process will make the effort easier for all involved.

Public Affairs and Commercialization (Building 4839), accessible through two rotary gates, is where Dryden Public Affairs, Public Services, Public Outreach, Technology Commercialization, part of the History function, Exhibits, the tour guides, and related offices are located. This is the place to go for public information, including maps of Edwards AFB, photos, posters, historical information and publications, and releasable information about current flight research projects.

Hazardous Materials Handling Building (Bldg. 4849), where people bring (or arrange for) hazardous materials to be stored or disposed of safely.

Safety Office (Bldg 4850), a former child development facility that now houses the Dryden (Ground) Safety Office and part of the Management Support Office.

Audio/Video Support Center (Bldg 4851), which provides audio and video support for flight research projects and other Center needs.

Filling Station (fuel, Bldg. 4854), where people with government vehicles can refuel them.

Warehouse #6 (Shipping & Receiving, Bldg. 4876), where materials are received and shipped for the Center.

### Cafeteria

Dryden has a cafeteria, The Flightline Eatery, located in Building 4825. Menus are posted to the Dryden internal web site at <http://xnet.dfrc.nasa.gov/EmployeeInfo/Cafeteria/index.html> . Hours of operation are normally 6:30 a.m. to 2:00 p.m., with breakfast served before 10:00 a.m. and lunch from then until 2:00 p.m.

### Parking

One of the benefits of working at DFRC is free, mostly unassigned parking, normally very close to where you will be working if you arrive at work before

7:30 a.m. Only people with legitimate handicaps may park in the spaces reserved for the handicapped.

You should park only in designated parking areas. Reserved parking spaces are clearly marked. Motorcycles may park in areas marked for cars as well as designated motorcycle spots. Please drive safely. In the early morning and the afternoon, the desert sun may make it very difficult to see pedestrians. At such time, please be especially careful not to hit a fellow employee.

## Safety

Dryden's safety, health, and environmental policy is to ensure a safe and healthy environment for both employees and visitors. To this end, we strive to comply with all safety and health requirements in applicable federal and state laws, regulations and codes; county ordinances and codes; contractual requirements; use permit restrictions; and industrial codes. We attempt to ensure all employees are familiar with safety requirements before they undertake particular kinds of tasks. And we endeavor to stop work when we deem any operation to be unsafe or unhealthy.

The fundamental beliefs underlying these policies are multifaceted. We are convinced that all injuries can be prevented through appropriate training, awareness, and actions. We believe that all managers have a special responsibility for preventing injuries. In carrying out this responsibility, they must audit safety performance in work areas under their responsibility and promptly correct any deficiencies. We know that we can control risks from exposure to hazards. But to do this, we insist that employees conduct their operations safely as a condition of their employment here. At the same time, we encourage them also to promote safety off as well as on the job.

Of course, managers alone cannot ensure safety. All employees must take a close look at their work areas, identify any hazards, and take action to eliminate them. Simply reporting the hazard is not enough; employees must keep bringing it up until it is resolved. The fact that no one has been hurt by a particular hazard does not make it safe.

In shops, hangars, and other areas, employees must all read and obey any safety warning signs, stay out of restricted areas, wear safety glasses and/or hearing protection where hazards to eyes or loud noises are present. Similarly, on most parts of Dryden, open-toed shoes are forbidden to prevent injuries to toes. Cell phones are prohibited in hangars where they could ignite fumes from fuels. People visiting hangars or the flightline should not approach any of Dryden's aircraft unless they have secured the crew chief's permission.

At Dryden, we use a large variety of chemicals. Their hazards are outlined on material safety data sheets, and they are normally stored in a chemical crib. But some of our aircraft, including Space Shuttles when they land here, contain hydrazine, which is highly toxic. To further promote their safety, all employees must watch a film on the hazards of hydrazine and the safety precautions to take when around it.

Because Dryden is a flight research center, it operates aircraft that present special noise hazards. But in addition to aircraft and their engines, other equipment and mechanical rooms at Dryden present noise hazards. Employees must don earplugs or other hearing protective devices to protect their hearing when around such hazards.

Dryden is located in the Mojave Desert, where extremes of heat are often present, especially during the summer. Employees and visitors must adjust their working practices to protect themselves from heat stress. This is especially true during periods when special heat warnings are announced or posted. Employees and others must drink lots of liquids (especially, water) and avoid long exposure to the sun's rays.

Other dangers may be posted in certain areas of Dryden. Employees must read and abide by the posted signs and heed warnings announced by flashing or other lights. Building 4801 has some sealed radiation sources with restricted access. They pose no hazard to occupants of the building, but employees must not enter the restricted areas unless authorized to do so.

Injuries can even occur simply from sitting at a computer and typing. Employees should use appropriate posture and equipment (such as wrist

rests and ergonomic chairs) to avoid carpal tunnel syndrome, pains in the neck, and other injuries.

Employees at Dryden also can be exposed to biological hazards, such as blood-borne pathogens and desert animals such as the Mojave green rattlesnake. Employees must take care where they walk to avoid snakebite, spider bites, and the like.

To promote safety, Dryden has a system for reporting close calls and hazards. A close call is an accident that came close to happening. Scattered throughout the DFRC are close calls and hazards reporting forms (DFRC 127). If employees notice a close call or hazard, they should report it by using one of these forms, by calling the trouble desk at X 3865 or the Safety, Health, and Environmental Office at X 2307.

Finally, Dryden is in an area that is subject to periodic earthquakes. All Dryden employees must be prepared to evacuate their workplace or home in the event of a severe tremor. Each office has an evacuation checklist and a disaster preparedness site map indicating where to go if evacuation becomes necessary (whether due to an earthquake, a fire, or other condition). Trained zone coordinators and fire wardens are identified and on hand to direct the evacuations and account for people from their work areas.

## Smoking

In accordance with regulations, smoking is not permitted inside any of the buildings at Dryden. There are designated smoking areas outside many of the buildings.

## Telephones

Dryden has a Cisco telephone system. For assistance in using it, consult the Phone System Guide at <http://xnet.dfrc.nasa.gov/Communications/VoIP/index.html> on the Dryden Intranet or ask a co-worker for assistance.

## Getting to Dryden

To get to DFRC, you will need to pass through one of three Edwards Air Force Base gates, guarded by military police with weapons. Probably the easiest entrance for most new employees to find and use the first time they are in the area is the north gate just south of state route 58. The north gate has less traffic than the other two and is easier to get through. The map below shows where Dryden is in relation to Los Angeles International Airport (LAX), the major metropolitan areas in California, and local highways. Other maps show the Edwards and Dryden areas. From state route 58, take the exit marked Edwards AFB. To gain access to the base, you will need the letter announcing your employment, a valid driver's license, plus proof of registration and insurance. Be prepared with a phone number of either Dryden Human Resources or your supervisor in case the gate guards need verification of your employment. If you plan to be accompanied by a non-U.S. citizen, you must apply for access to NASA Dryden and Edwards AFB through your organization head at least 45 days before you arrive. **Once on base, be sure to wear your seatbelt and drive no faster than the posted speed limits. Proceed south on Rosamond Boulevard to Lilly Drive, turning left at the F-16 aircraft on the corner. Then turn right at the HL-10 aircraft (a lifting body [aircraft without wings]) and proceed to the left turn into a parking area (beyond the row of display aircraft) where you can park and enter Building 4825 at the door marked "visitor control."**





**Located at:**

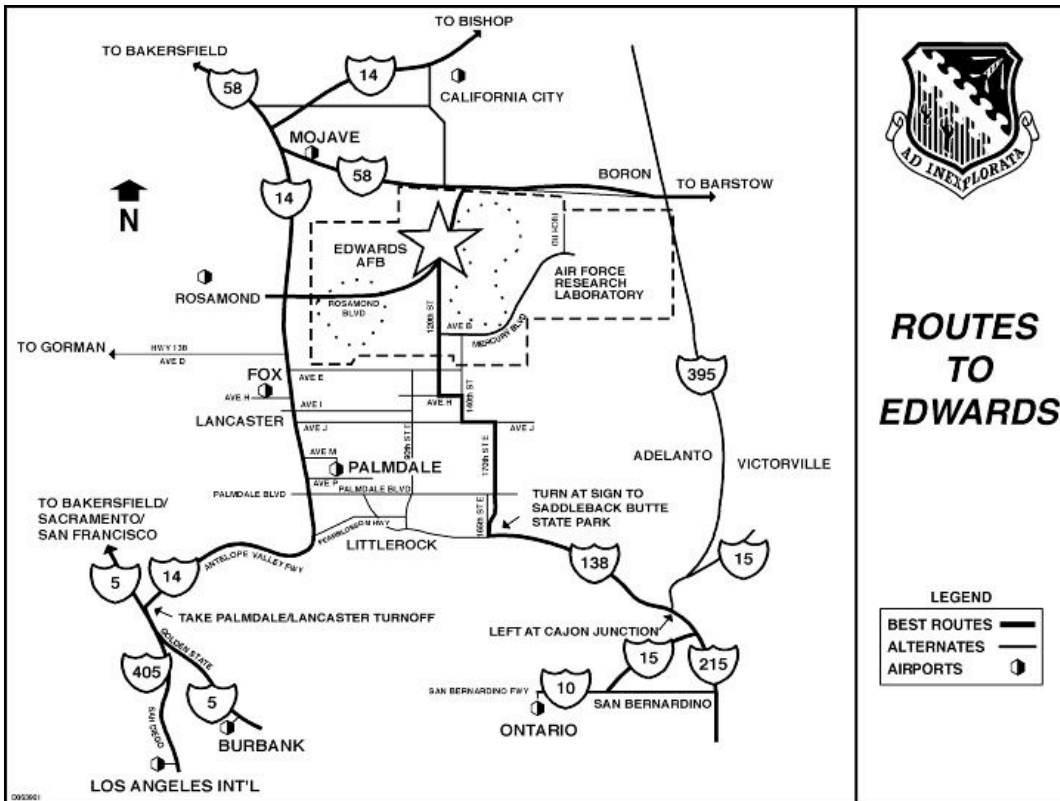
Edwards Air Force Base in the Mojave Desert of California.

**Note:**

From LAX, take Century Blvd. east to Fwy 405 North to Fwy 14 North.







## Entrance to Dryden

When you arrive at DFRC on your first day, you will need to check in at Building 4825 at the main entrance, following the directions above. DFRC has only one entrance for vehicles, just northwest of Building 4825 and just south of Lilly Drive. For security reasons guards are posted at the gate. If there are passengers in the vehicle, they will need to have identification to show the guard. The inbound gate is open from 6:15 a.m. to 9:00 a.m. and 11:30 a.m. to 12:45 a.m. At other times, there is only card access for entrance.

## Badges & Decals

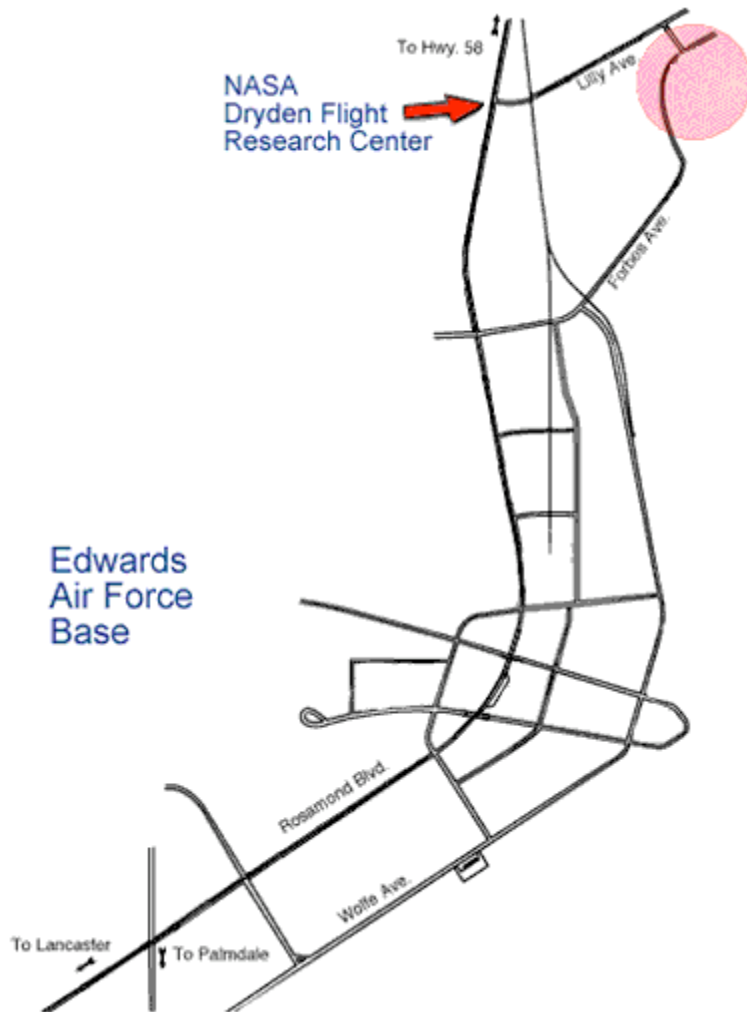
At Building 4825, you will receive a personal identification badge to be worn at all times while on site. To get badged, you will need a picture ID and other proof of citizenship. NASA Headquarters must approve non-U.S. citizens for employment at least 30 days before they arrive on site. If you are a naturalized citizen, you must bring a copy of your naturalization certificate.

# AIR FORCE FLIGHT TEST CENTER PUBLIC AFFAIRS

Hours of Operation  
Monday - Friday  
7:30 AM - 4:30 PM  
Phone (661) 277-3510



Detailed Map of Dryden's Location on Edwards AFB



## Registering your Vehicle

To register your vehicle, once you have checked in at Dryden, you can drive south on Rosamond Blvd. to Bldg. 3000 on Edwards Air Force Base proper. It is at the intersection of Rosamond and Yeager Blvds. but actually faces Seller Ave. To park, turn left on Yeager and left again on Seller, then turn left into the parking lot. Be sure not to park in a reserved parking space. You will need to take with you your Dryden badge, your vehicle registration, proof of insurance showing the vehicle's VIN #, and a current driver's license. The driver's license does not need to be from California, but the Air Force will not issue a pass for more than 60 days without a California smog check unless the vehicle is a 2001 model or later, in which case it may have information inside the hood indicating that it complies with California clean air standards. If you are driving a vehicle owned by a parent or guardian, you

will need to present a letter from the owner certifying the currency of the registration, the fact that insurance meets California requirements, and the driver's permission to drive the vehicle. All vehicles entering and exiting the base are subject to random vehicle inspections by security personnel. This is to prevent the introduction of prohibited items and to prevent the unauthorized removal of property.

### **Driving and Speed Limits**

Speed limits on Dryden Flight Research Center are posted and should be carefully observed, as is also true on Edwards Air Force Base.

### **History of Dryden Flight Research Center**

The Dryden Flight Research Center is NASA's premier installation for aeronautical flight research. It is located at Edwards, Calif., on the western edge of the Mojave Desert, 80 miles north of Los Angeles. In addition to carrying out conventional aeronautical and space research, the Center also supports the space shuttle program as a backup landing site and as a facility to test and validate design concepts and systems used in development and operation of the orbiters.

Dryden's history dates back to the early fall of 1946, when a group of five aeronautical engineers arrived at what is now Edwards from the National Advisory Committee for Aeronautics' Langley Memorial Aeronautical Laboratory (today, Langley Research Center), Hampton, Va. Their goal was to prepare for the X-1 supersonic research flights in a joint NACA-U.S. Army Air Forces-Bell Aircraft Corp. program. The NACA was the predecessor organization of today's NASA. Since the days of the X-1, the first aircraft to fly faster than the speed of sound, the installation has grown in size and significance and is associated with many important developments in aviation—supersonic and hypersonic flight, flight of wingless lifting bodies, digital fly-by-wire, supercritical and forward-swept wings, and the space shuttles, among others.

Over the years, Dryden has conducted flight research with such aircraft as the X-15 rocket-propelled aircraft that flew to the edge of space and back, the Lunar Landing Research Vehicle, the F-8 Digital Fly-by-Wire aircraft, the X-31, the F-18 High-Angle-of-Attack Research Vehicle, and many other

research aircraft whose data contributed to the development of commercial and military airplanes used by the United States and other nations and of technologies used thereon. In the process, Dryden has grown from an initial group of five engineers in 1946 to a facility of approximately 1,000 civilian and contractor personnel with a wide range of research capabilities.

Dryden, a civilian tenant organization within the boundaries of Edwards Air Force Base, is on the northwest edge of Rogers Dry Lake, a 44-square-mile area used for aviation research and test operations. An additional 22 square miles of similar smooth clay surface is provided by nearby Rosamond Dry Lake. The desert environment provides good flying weather an average of 345 days a year, and the absence of large population centers throughout the high desert helps eliminate problems associated with aircraft noise and flight patterns.

### Physical Tours

If you would like to arrange a tour of Dryden and its facilities, you can do so by calling X3446 or X3460. The tour guides can arrange a special tour for new Dryden employees that will introduce them to parts of the Center they might not ordinarily encounter, such as Life Support or the Simulation Lab. Such tours normally could accommodate up to 14 people once a month. This is a good way to learn where different functions are on Center as well as to learn a little about Dryden's history.

### The Local Area

Dryden is located in the Antelope Valley, a stretch of high desert that encompasses southern Kern County and northern Los Angeles County and includes the communities of Lancaster, Palmdale, Rosamond, and Mojave. These communities are within easy driving distance of Los Angeles and the beaches along the Pacific Coast. Rosamond and Mojave are the closest of these four to Dryden but are smaller than Lancaster and Palmdale as well as further from Los Angeles, if you would like to have ready access to the LA area. A fifth community that is close to Dryden is California City. Many Dryden employees choose to live in Tehachapi, which is located in the mountains and offers both cooler weather in the summer and colder weather

in the winter than the other nearby communities. Other local communities are listed below.

## Where to Live

Choosing where to live in the region around Dryden and Edwards may be a daunting task for someone unfamiliar with the high desert. Below are some profiles of the major options with internet sites and telephone numbers for contacting the local chamber of commerce in each of the sites. You may also want to talk with your future supervisor at Dryden to obtain his or her recommendations. It would be a good idea for new employees to contact the chamber of commerce in the community they think they might like to live in and get information about what parts of the city are most desirable from various perspectives. There are also other web sites available to check on apartments and their neighborhoods. It will be well worth the time to find a neighborhood where you really want to live and not be tied to an undesirable location by a long lease. New employees should also avail themselves of househunting trips, temporary lodging benefits, and the like, if the terms of their employment provide them. The information below includes telephone numbers for school districts so that new employees can gather information in that area to help decide where they might want to live.

### **Boron, California**

**Population:** 3,600

**Miles from Dryden:** 22

**Elected official:** Chamber of Commerce President F.O. Roe

**School system:** Muroc Unified School District, (661) 258-4178

**Chamber of Commerce:**

26962 Twenty Mule Team Road, Boron, CA 93516

**Phone:** (760) 762-5810

**Web site:** <http://www.boronchamber.org>

Located northeast of Edwards along California State Highway 58, the community of Boron is the site of a giant open-pit mine from which the extracted element, borax, lends the town its name. The pit, the largest in the Western Hemisphere, is owned and operated by the U.S. Borax and Chemical Corporation and employs a great deal of the community. Edwards and Dryden employ the remainder. The town is also home of

the Col. Vernon P. Saxon Jr. Aerospace Museum.

The town's people tuck themselves into the preservation of the rich history of both Boron and Edwards. Kern County provides the community's branch library, fire station and sheriff department. The U.S. Post Office is centrally located on Boron Avenue.

## **California City, California**

**Population:** 11,500  
**Miles from Dryden:** 16  
**Elected official:** Mayor Larry Adams  
**School system:** Mojave Unified School District, (661) 824-4001

### **Chamber of Commerce:**

8001 California City Blvd., California City, CA 93505  
**Phone:** (760) 373-8676  
**Web site:** [city.California-city.ca.us](http://city.California-city.ca.us)

Begun as a private commercial development, the community was incorporated in 1965 and ranks as the third largest incorporated city in terms of land area in California.

Located northwest of the base along Highway 58 and a northern jaunt on California City Boulevard, the small community offers all the enhancements of the original developer's grand vision: easy shopping, an 18-hole golf course and a central park offering swimming, boating, fishing, illuminated tennis courts, basketball and volleyball courts, picnic facilities, barbecue pits, children's playgrounds and a marina facility.

## **Lancaster, California**

**Population:** 133,000  
**Miles from Dryden:** 30  
**Elected official:** Mayor Frank Roberts

### **School system:**

- Antelope Valley Union High School District, (661) 948-7655
- Eastside Union School District, (661) 946-2813
- Lancaster School District, (661) 948-4661
- Westside Union School District, (661) 948-2669



- Westside Union School District, (661) 948-2669

**Chamber of Commerce:**

554 W. Lancaster Blvd., Lancaster, CA 93534

**Phone:** (661) 948-4518

**Web site:** [www.cityoflanasterca.org](http://www.cityoflanasterca.org)

A thriving, civic-spirited community, Lancaster has enjoyed unprecedented growth and prosperity in the last decade. During this time, Lancaster has grown to be the commercial and business center of the Antelope Valley and promises to continue such growth.

With proximity to the Los Angeles metropolitan area and yet clean air and blue skies, the community is an affordable choice conveniently located to much of Southern California's attractions and aerospace industry employment. Lancaster has a council-manager/administer form of government with five elected council members and 230 full-time employees. All public safety services, including police and fire, are provided by the County of Los Angeles, while the sheriff's department performs contract-based services, and the fire department performs under a Fire Protection District approach.

## **Mojave, California**

**Population:** 3,863

**Miles from Dryden:** 34

**Elected official:** Unincorporated

**School system:** Mojave Unified School District, (661) 824-4001

**Chamber of Commerce:**

**Phone:** (661) 824-2481 or call the Kern Economic Development Corporation at (661) 862-5150

**Web site:** [www.kedc.com](http://www.kedc.com)

Mojave sits at the junction of California Highways 14 and 58 and to some is a gateway to such popular spots as Mammoth and the Eastern Sierras, Las Vegas, Eastern Mojave Desert and to the Los Angeles Basin. But Mojave itself is the location of several natural wonders and historical sites that include mining ghost towns and more.

Anyone driving through Mojave is certain to notice the Mojave Airport.



Known to many as the civilian flight test center and the launching spot of SpaceShipOne, the airport is unique in its locale and environmental conditions and is known both for its flight test activities and for the maintenance and storage services provided to the airline industry.

## **North Edwards, California**

**Population:** 1,227  
**Miles from Dryden:** 10  
**Elected official:** None  
**School system:** Muroc Joint Unified School District, (661) 258-4001

North Edwards is an unincorporated bedroom community just north of Edwards along Highway 58. School-age children go to school at Edwards. Housing is affordable, though shopping convenience is limited.

## **Palmdale, California**

**Population:** 131,295  
**Miles from Dryden:** 40  
**Elected official:** Mayor James Ledford Jr.

### **School systems:**

- Antelope Valley Union High School District (high schools), (661) 948-7655
- Palmdale School District (elementary and junior high schools), (661) 947-7191
- Westside School District (elementary and junior high schools), (661) 948-2669

### **Chamber of Commerce:**

817 E. Avenue Q-9, Palmdale, CA 93550  
**Phone:** (661) 273-3232  
**Web site:** [www.cityofpalmdale.org](http://www.cityofpalmdale.org)

Palmdale's biggest industry, and employer, is aerospace. Thousands of residents are employed at Air Force Plant 42 Production Flight Test Installation and Edwards Air Force Base.

Plant 42 is a huge complex including more than eight million square feet of covered space. Lockheed Martin Aeronautics Co., Northrop Grumman and The Boeing Co. have billions of dollars in aerospace projects there. Producers, manufacturers, wholesalers, government and business services comprise 76 percent of the city's employment

force. Natural resources also provide employment in the fields of sand, gravel, rock and cement production. The film industry finds Palmdale's high desert locations very attractive and spends millions of dollars here annually.

A community of 131,295 residents, Palmdale has a civic foundation in the Larry Chimbole Cultural Center, Palmdale Playhouse and Poncitlan Square, a park fashioned after one in Poncitlan, Mexico, Palmdale's sister city.

## **Quartz Hill, California**

**Population:** 16,984  
**Miles from Dryden:** 36  
**Elected officials:** None  
**School system:** Westside School District, (661) 722-0716

### **Chamber of Commerce:**

42043 50th Street West, Quartz Hill, CA 93536  
**Phone:** (661) 722-4811  
**Web site:** [www.quartzhillchamber.org](http://www.quartzhillchamber.org)

Quartz Hill, a small, primarily residential and unincorporated community, is situated just four and a half square miles west of Lancaster and Palmdale. Residents enjoy the rustic qualities of the town with horseback riding on many trails, fishing in the nearby California Aqueduct and a view of nature. The community is known for its almond orchards and the annual almond festival parade.

## **Rosamond, California**

**Population:** 18,500  
**Miles from Dryden:** 20  
**Elected official:** Mayor Jed Dyke  
**School system:** Southern Kern Unified School District, (661) 256-5000

### **Chamber of Commerce:**

2861 Diamond Street, Rosamond, CA 94560  
**Phone:** (661) 256-3248

Just a straight shot west of Edwards along Rosamond Boulevard, the small community of Rosamond is a mecca for rock-hounds with its

cradling and abundant hillside landscape of beautiful rocks – especially at Gem Hill, located four miles north of the community.

Kern County provides fire and police protection in addition to supporting a community recreation building and three parks with a lighted baseball diamond. Agriculture pertinent to the area includes alfalfa, sugar beets, potatoes and onions. The community also has a community/senior center. The community is the home of Willow Springs Raceway and the Exotic Feline Breeding Compound.

## **Tehachapi, California**

**Population:** 32,643  
**Miles from Dryden:** 44  
**Elected official:** Mayor Marianna Teel  
**School system:** Tehachapi Unified School District, (661) 822-2100

### **Chamber of Commerce:**

P.O. Box 401, Tehachapi, CA 93581  
**Phone:** (661) 822-4180  
**Web site:** [www.tehachapi.com](http://www.tehachapi.com)

Located in the mountains about 45 miles from the base and about 4,000 feet above sea level, Tehachapi offers a cool alternative to the warm Mojave Desert summers.

Tehachapi has a rural atmosphere with farming as a way of life for many residents. Award-winning livestock are common in the area as well as famous apples, pears and cherries.

Area residents visit Tehachapi year round for the Mountain Festival, the Professional Rodeo Cowboy Association Rodeo in August, the apple and pumpkin harvest in the fall and the cool mountain breezes in the summer.

## **Victorville, California**

**Population:** 77,881  
**Miles from Dryden:** 56  
**Elected official:** Mayor Terry Caldwell

**School system:**

- Victor Valley Union High School District, (760) 955-3200
- Victor Elementary School District, (760) 245-1691

**Chamber of Commerce:**

P.O. Box 997, Victorville, CA 92392

**Phone:** (760) 245-6506

**Web site:** [vychamber.com](http://vychamber.com)

Located to the east of Edwards in the high desert of Victor Valley, Victorville is accessible via Interstates 15 and 395, conveniently linking the city with all other areas of Southern California.

The community encompasses approximately 68 square miles and has experienced an annual growth in population of nearly 19 percent. It is, however, a considerable distance from Dryden.

## Employee Benefits

The government is a leader in providing employees with a choice of health and life insurance benefits and is a national leader in creating a "family-friendly" workplace. At NASA, in addition to having the unparalleled opportunity to work side-by-side with some of the nation's best and brightest scientists, engineers, technical and professional staffs, employees have reported that they are more satisfied with their jobs than their counterparts at any other government agency. In employee satisfaction surveys, NASA excelled on issues including satisfaction with immediate supervisors, good cooperation between work units, policies toward family and personal life responsibilities, and the level of recognition received for doing a good job.

NASA is committed to being an employer of choice and, in addition to providing challenging and satisfying work, offers a competitive salary along with a comprehensive retirement and benefits package. In addition to offering a choice of health plans, DFRC has a health clinic offering civil servants preventive care, immunizations and health screenings at no charge. Some other benefits include Life and Travel Insurance, Flexible Spending Accounts, and an

## Employee Assistance Program (EAP).

The EAP: Sometimes people experience a problem that seems unsolvable, overwhelming, or frustrating. The problem may interfere or disrupt their work or private lives, leaving them with a sense of hopelessness, failure, anxiety, or anger. Whether you or a member of your family is going through a difficult experience, NASA's Employee Assistance Program (EAP) provides the services you need to work through a problem.

NASA's In-House EAP is free to all Dryden civil servant and contractor employees and their family members. You may arrange for an appointment or have a question answered by phoning one of the EAP psychologists.

The EAP program offices are located in Building 4800 room 1625 - 1627.  
Phones: 661-276-2000 and 661-276-3098

For more detailed information about the benefits below, see the indicated internet sites.

### Federal Employee Health Benefits

- [www.opm.gov/insure](http://www.opm.gov/insure)
- 60 Days From Date of Hire to Enroll
- Once a Year Open Season (Enroll or Change Insurance Carriers)
- Premiums are pre-taxed (automatic unless waived)

### Federal Employees Group Life Insurance

- [www.opm.gov/insure](http://www.opm.gov/insure)
- 31 Days From Date of Hire to Enroll
- Automatic Basic Coverage
- Physical required to elect later except for qualifying life event

### Thrift Savings Plan

- [www.tsp.gov](http://www.tsp.gov)
- 30 Days from Date of Hire to Enroll
- 2 Open Seasons a Year
- Can Contribute Up to 14% of Your Salary
- 1% Government Contribution (Automatic after obtaining eligibility)

- Government Matching Up to 5%
- 5 Investment Choices (Interfund Transfers allowed throughout the year)

## Pay

NASA employees are paid according to guidelines established to ensure fairness and consistency in remuneration throughout the federal workforce. Consequently, pay is based on government-wide criteria taking into account such things as the position occupied and the salary progression appropriate to the position.

Most employees are on the general schedule salary system (GS system), which is divided into 15 grades and 10 steps. Pay for DFRC is locality-based, which means that the cost of living for the local area is added to base pay.

Employees are paid on a biweekly basis. Time cards and related procedures will be explained in greater detail once you arrive.

## Leave/Holidays

In addition to 10 paid holidays per year, you will begin to accrue annual leave on your first day of employment. NASA employees with less than three years of service earn a total of 13 days of annual leave per year. Four hours of sick leave are also accrued for each two-week pay period and any unused balance may be carried over to the next year. Employees may also carry over up to 30 days of unused annual leave each year. For further information on leave policies, see the Office of Personnel Management web site at <http://www.opm.gov/oca/leave/index.asp>.

## Employee Development

The most important asset of any organization is its people. At DFRC, the dedication and efforts of our employees have enabled us to achieve our past successes and will continue to help us meet future challenges. The Center recognizes this and is committed to providing an environment that fosters the recruitment, development, and retention of a high-quality workforce.

DFRC offers a wide array of student programs and professional development opportunities, including regular educational conferences, professional

symposia, on site workshops, and training classes.

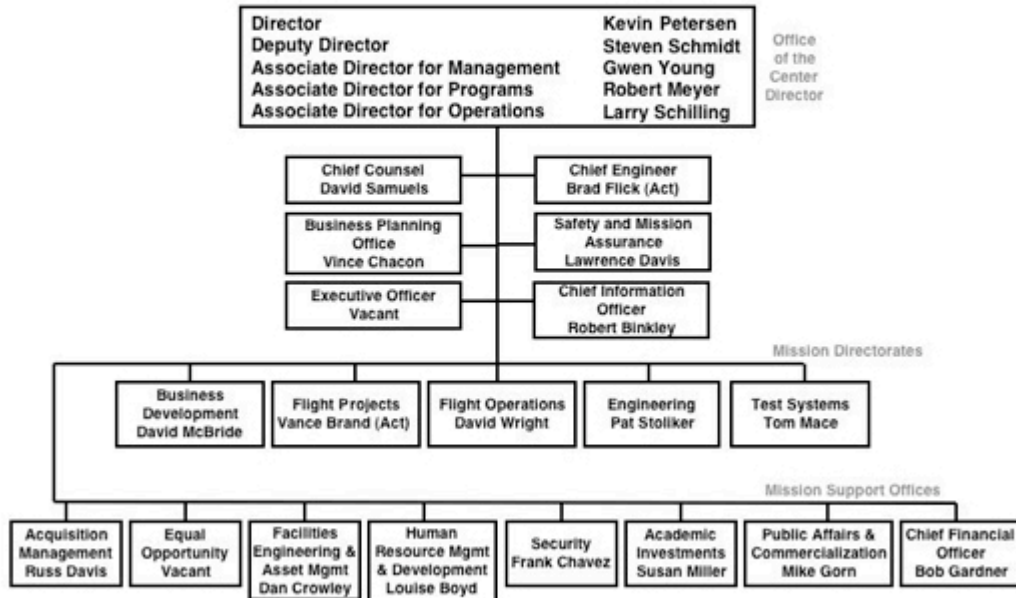
### Dryden Organizations

Even though Dryden is a comparatively small NASA Center, it contains a large number of organizations. These change from time to time, but from inside the Center new employees can find the most recent descriptions on the Intranet (X-Net) at:

[http://xnet.dfrc.nasa.gov/cgi-bin/t3.cgi/IsoDocs/taf/doc\\_master\\_list\\_all.taf?function=search](http://xnet.dfrc.nasa.gov/cgi-bin/t3.cgi/IsoDocs/taf/doc_master_list_all.taf?function=search) from DOC-A-002 through DOC-Y-014. (These documents are in an alphabetical listing, starting with CIP and then DCP, so users must scroll down to DOC-A-002.)

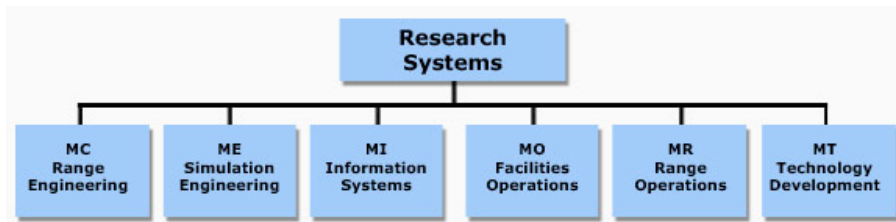
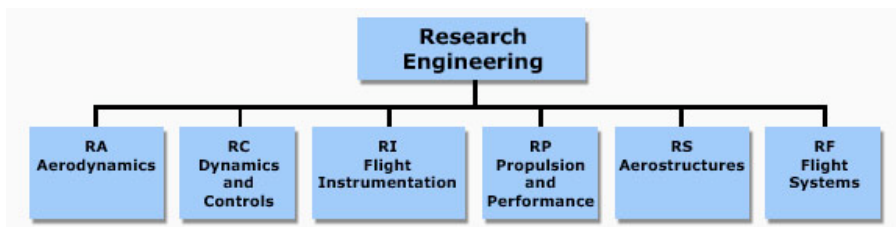
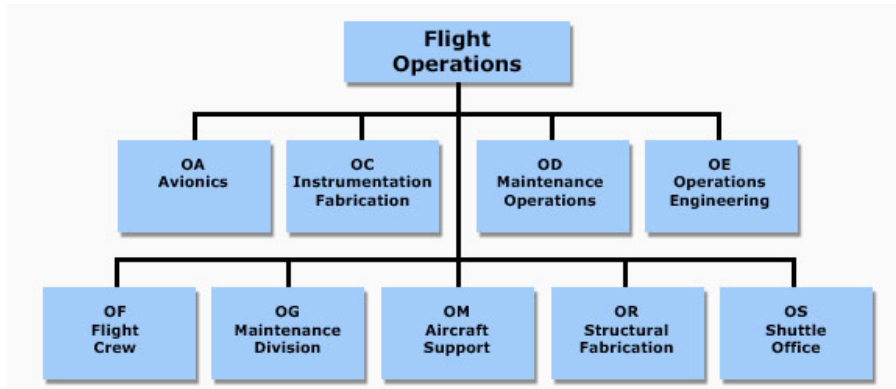
Dryden's basic organization is indicated by the charts below:

## Dryden Flight Research Center



### Additional Center Organizational Charts

#### Branch Organization Charts



## Dryden Directory

Directory-type information is available on the Intranet at <http://xnet.dfrc.nasa.gov/Communications/PhoneBook/index.html>

and at <http://www.dfrc.nasa.gov/X500/X500.html> .

Before you arrive on Center, you can contact Dryden by dialing 800-521-3416. Then the following extensions may be useful to new employees:

## Frequently Called Numbers

Acquisitions, X3327



Aero Branch, X3135

Air Ground Equipment Shop, X3028

Audio-Visual Support, X3350

Avionics Lab, X2690

Business Help Desk, X2477

Cafeteria, X3270

Calibration Lab, X7920

Chief Counsel's Office, X3997

Computer Lab, X5630

Computer Lab, Data Automation Facility, X6028

Conference Room Scheduling, X6111

Director's Office, X3102

Employee Assistance Program, X2000

Engineering Directorate, X3119

Equal Opportunity Program (EEO), X3033

Finance, X3601

Fitness Center, X2261

Flight Operations, X3220

Gas station (for government vehicles), X2697

Graphic Arts, X3937

Health Unit, X3570

Help (general), X4357

Human Resources, X7000

Hydraulic Shop, X3640  
Legal Office, X3997  
Life Support, X3671  
Loads Lab, X3697  
Locksmith, X2344  
Machine Shop, X3632  
Mail Center, X3936  
Motorpool, X7479  
Paint Shop, X2413  
Pass and ID, Edwards AFB, 8-1-661-277-7403  
Photo Lab, X3350  
Public Affairs and Commercialization, X3449  
Public Tours, X3460, X3446  
Purchasing, X3327  
Reproduction, X3637  
Research Library, X3702  
Safety and Mission Assurance, X2500  
Safety Office, X2307  
Security Office, X3742  
Security Control, X3256  
Sheetmetal Shop, X3904  
Shipping and Receiving, X3248  
Shuttle Office, X3418

Visitor Control, X3273

Welding Shop, X3834

### Emergency Information

If you arrive when the weather is bad or an emergency condition exists, you can get information from the Dryden Event or Emergency Information Hotline, (661) 276-2777, or tune into one of the following radio stations to learn whether Dryden will be open or not:

AM Stations	FM Stations
KAVL, Lancaster 610 KHz	KLKX, Rosamond 93.5 MHz
KIIS, Santa Clarita 1220 KHz	KVVS, Lancaster 97.7 MHz
KTPI, Mojave 1340 KHz	KTPI, Tehachapi 103.1 MHz
KWJL, Lancaster 1380 KHz	KOSS, Rosamond 105.5 MHz
KUTY, Palmdale 1470 KHz	KGMX, Lancaster 106.3MHz
(Spanish-speaking)	KCEL, California City 106.9 MHz

In general, employees should assume that Dryden will be open unless notified otherwise. Employees should exercise good judgment about traveling during hazardous-weather conditions or following an emergency such as an earthquake.

### On-Base Amenities

Many amenities on Edwards Air Force Base, such as the commissary (food store) are available only to military personnel, their dependants, or retired military personnel. But the following are available to Dryden employees regardless of their military status:

## Child Care

Child care for Dryden employees is available through Edwards AFB's

Child Development Center  
1208 W. Fitzgerald Blvd.  
8-1-661-275-TOTS

The CDC, located in the housing area, provides developmental care for children 6 weeks to 5 years old for both military members and Department of Defense and NASA civilians. The CDC is open Monday through Friday and is closed all federal holidays.

Hourly care and part-day enrichment programs are available. Saturday hourly care is offered once each month. Breakfast, lunch and afternoon snacks are served on a regular basis. All meals are in accordance with U.S. Department of Agriculture guidelines.

Planned activities include dramatic play, blocks, art, music, reading and writing centers, indoor and outdoor gross motor play, science and language. As part of the creative curriculum, all children are exposed to a variety of developmental activities to promote their social, physical and cognitive growth.

Eating Establishments (See map below for locations.):

### **Anthony's Pizza**

Base Exchange Food Court  
240 W. Fitzgerald Blvd.  
(661) 258-4034

Monday through Saturday, 10 a.m. to 7 p.m.; Sunday, 10 a.m. to 7 p.m.

Offers a variety of pizzas.

### **Baskin Robbins**

Base Exchange Food Court  
240 Fitzgerald Blvd.  
(661) 258-1078, extension 256

Monday through Saturday, 10 a.m. to 8 p.m.; Sunday, 10 a.m. to 7 p.m.

Offers ice cream desserts, frozen beverages and special-occasion ice cream cakes.

**Burger King**

240 W. Fitzgerald Blvd.

(661) 258-5987

Monday through Friday, 6 a.m. to 9 p.m.; Saturday and Sunday, 8 a.m. to 8 p.m.

Offers breakfast, lunch and dinner fast-food items.

**Cactus Café**

Corner of Wolfe Avenue and Fitzgerald Blvd.

(661) 275-CAFE

Monday through Friday, 6:30 a.m. to 1 p.m.

Offers a breakfast menu and daily lunch specials, grill items and sandwiches.

**Charley's Steakery**

Base Exchange Food Court

240 W. FitzGerald Blvd.

(661) 258-1078, Ext. 256

Monday-Saturday, 10 a.m.-8 p.m., Sunday, 10 a.m.-7 p.m.

Offering fresh and healthy grilled subs.

**Joshua Tree Inn Dining Facility**

130 W. Popson Ave.

(661) 275-TREE

**Breakfast:** Monday through Friday, 5:30 to 7:45 a.m.; Saturday and Sunday, 6 to 9 a.m.

**Lunch:** Monday through Friday, 10:30 a.m. to 1 p.m.; Saturday and Sunday, 11 a.m. to 1 p.m.

**Dinner:** Monday through Friday, 4 to 7 p.m.; Saturday and Sunday, 4 to 7 p.m.

**Midnight meal:** Monday through Sunday, 11 p.m. to 1 a.m.

**In-Flight Kitchen:** 24 hours daily, (661) 275-3776

**Family Nights:** Each Wednesday and Sunday, from 4 to 7 p.m.; family members of enlisted personnel in the pay grade of E-1 through E-4 are exempt from paying the surcharge.

Back-to-back winners of the AFMC Gold Plate award for 2002 and 2003, and winner of the 2002 Air Force Hennessy award, the Joshua Tree Inn dining facility provides full food service to all military personnel and authorized guests. Enlisted personnel and officers receiving Basic Allowance for Subsistence (BAS) will be assessed the proportional surcharge, based on the subtotal of entrees selected. Low calorie/healthy choice entrees are offered during all meal periods.

**Mary's Place**

300 E. Yeager Blvd.  
(661) 258-5215  
Monday through Friday, 6 a.m. to 6 p.m.

Offers a breakfast menu and daily lunch specials, grill items and sandwiches.

**Oasis Pizza & Deli**

205 W. Popson Ave. (Located in the Oasis Community Center)  
(661) 275-DELI

**Lunch:** Monday through Friday, 10 a.m. to 1:30 p.m.

**Dinner:** Monday through Thursday, 4 to 9 p.m.; Friday and Saturday, 4 to 10 p.m.;

Offers deli-style sandwiches, pizza, salads, and daily lunch specials.

**Pizza Hut Express**

1100 Kincheloe Ave.  
(661) 258-4907  
Sunday through Thursday, 10 a.m. to 9 p.m. Friday and Saturday 10 a.m. to 10 p.m.

Offers pizza delivery, carry out or dine in.

**Popeye's**

Base Exchange Food Court  
240 Fitzgerald Blvd.  
(661) 258-1078, extension 257  
Monday through Saturday, 10 a.m. to 8 p.m.; Sunday, 10 a.m. to 7 p.m.

Offers fast-food chicken meals with an assortment of side dishes.

**Robin Hood Sandwich Shoppe and Deli**

Base Exchange Food Court  
240 W. Fitzgerald Blvd.  
(661) 258-4034  
Monday through Sunday, 9 a.m. to 7 p.m.

Offers a variety of submarine sandwiches and salads.

**Sandbagger Grill**

(Located at the Muroc Lake Golf Course)  
111 Crest Dr.  
(661) 275-SAND  
Monday through Sunday, 6 a.m. to 4 p.m.

Offers breakfast and lunch menus, hot entrees, grill items, sandwiches and salads. Located at the Muroc Lake Golf Course.

**South Base Snack Bar**

Birk Flight Test Facility  
120 East Jones Rd.  
(661) 275-0213  
Monday through Friday, 6 a.m. to 2 p.m.

Offers a breakfast menu and daily lunch specials, grill items and sandwiches.

**Strikezone Snack Bar**

205 W. Fitzgerald Blvd. (At the High Desert Lanes Bowling Center)  
(661) 275-ZONE  
Monday through Thursday, 10:30 a.m. to 7 p.m.; Friday, 10:30 a.m. to 10 p.m.; Saturday, 2 to 10 p.m.; Sunday 2 - 7 p.m.

Offers a breakfast

# AIR FORCE FLIGHT TEST CENTER PUBLIC AFFAIRS

Hours of Operation  
Monday - Friday  
7:30 AM - 4:30 PM

Phone (661) 277-3510

