

*Travel Management Planning
Wheeled Access - Proposed Action
A Starting Point
West Fork Ranger District*

Legend

MOTORIZED ROUTE DESIGNATION SYMBOLS

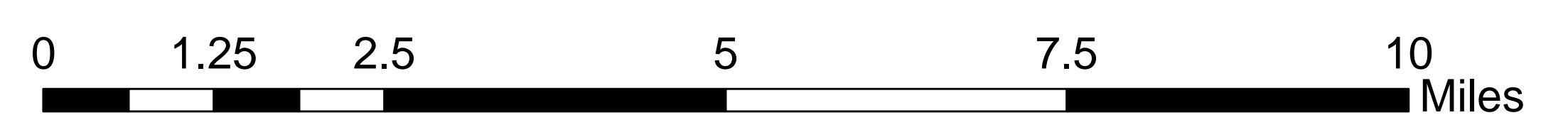
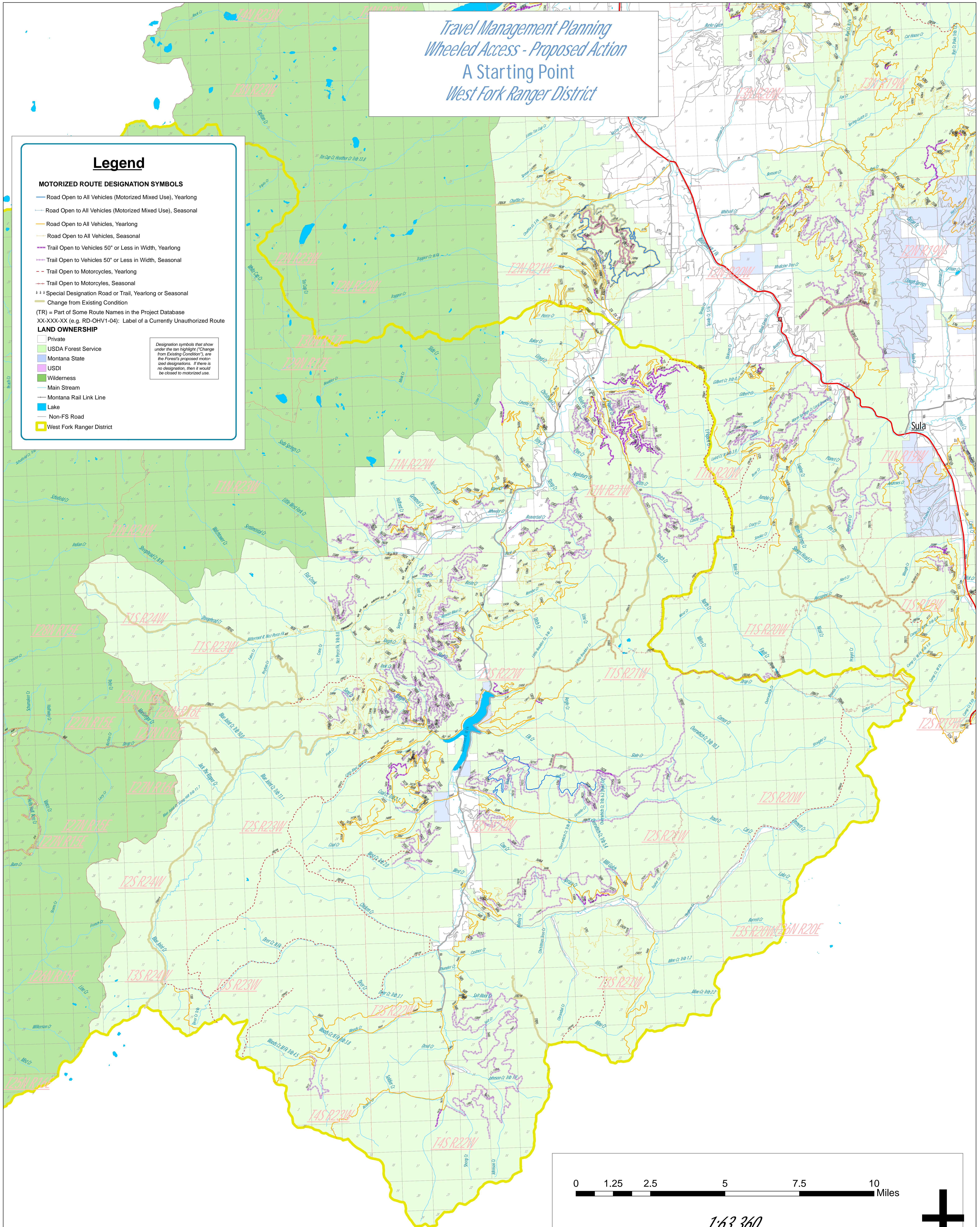
- Road Open to All Vehicles (Motorized Mixed Use), Yearlong
- - - Road Open to All Vehicles (Motorized Mixed Use), Seasonal
- Road Open to All Vehicles, Yearlong
- - - Road Open to All Vehicles, Seasonal
- Trail Open to Vehicles 50" or Less in Width, Yearlong
- - - Trail Open to Vehicles 50" or Less in Width, Seasonal
- - - Trail Open to Motorcycles, Yearlong
- - - Trail Open to Motorcycles, Seasonal
- - - Special Designation Road or Trail, Yearlong or Seasonal
- Change from Existing Condition

(TR) = Part of Some Route Names in the Project Database
XX-XXX-XX (e.g. RD-OHV1-04): Label of a Currently Unauthorized Route

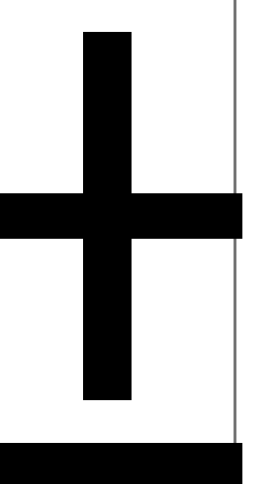
LAND OWNERSHIP

- Private
- USDA Forest Service
- Montana State
- USDI
- Wilderness
- Main Stream
- Montana Rail Link Line
- Lake
- Non-FS Road
- West Fork Ranger District

Designation symbols that show under the tan highlight ("Change from Existing Condition"), are the Forest's proposed motorized designations. If there is no designation, then it would be closed to motorized use.



1:63,360
1 inch equals 1 miles



All Mapping is Approximate.