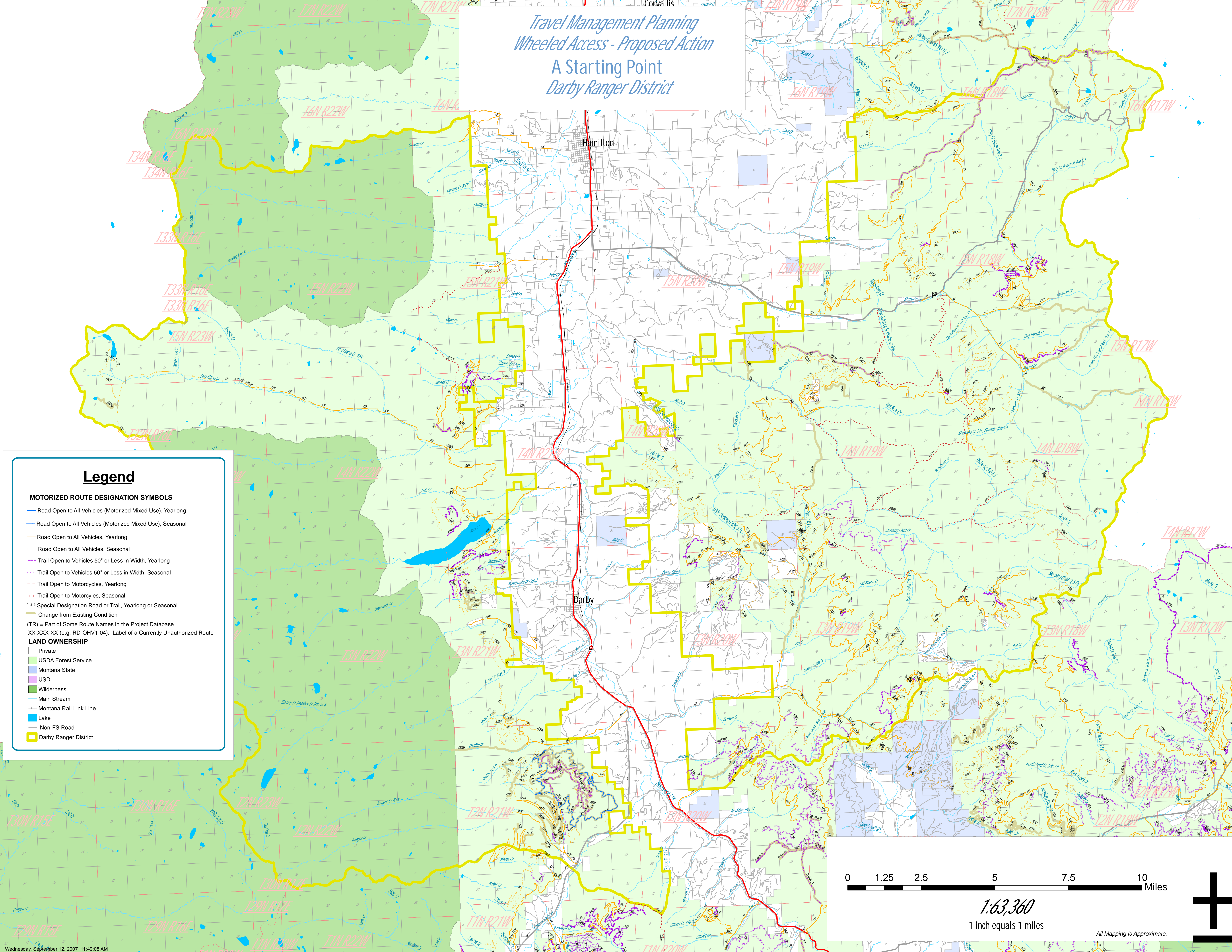


# Travel Management Planning Wheeled Access - Proposed Action A Starting Point Darby Ranger District



### Legend

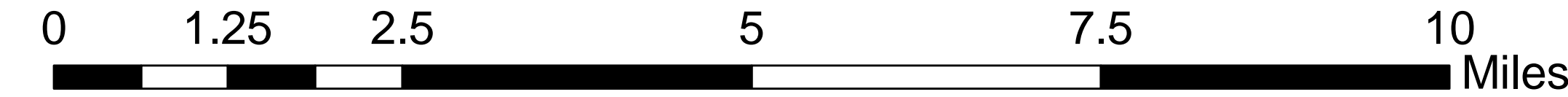
#### MOTORIZED ROUTE DESIGNATION SYMBOLS

- Road Open to All Vehicles (Motorized Mixed Use), Yearlong
- Road Open to All Vehicles (Motorized Mixed Use), Seasonal
- Road Open to All Vehicles, Yearlong
- Road Open to All Vehicles, Seasonal
- Trail Open to Vehicles 50' or Less in Width, Yearlong
- Trail Open to Vehicles 50' or Less in Width, Seasonal
- Trail Open to Motorcycles, Yearlong
- Trail Open to Motorcycles, Seasonal
- Special Designation Road or Trail, Yearlong or Seasonal
- Change from Existing Condition

(TR) = Part of Some Route Names in the Project Database  
 XX-XXX-XX (e.g. RD-OHV1-04): Label of a Currently Unauthorized Route

#### LAND OWNERSHIP

- Private
- USDA Forest Service
- Montana State
- USDI
- Wilderness
- Main Stream
- Montana Rail Link Line
- Lake
- Non-FS Road
- Darby Ranger District



**1:63,360**  
1 inch equals 1 miles

All Mapping is Approximate.

