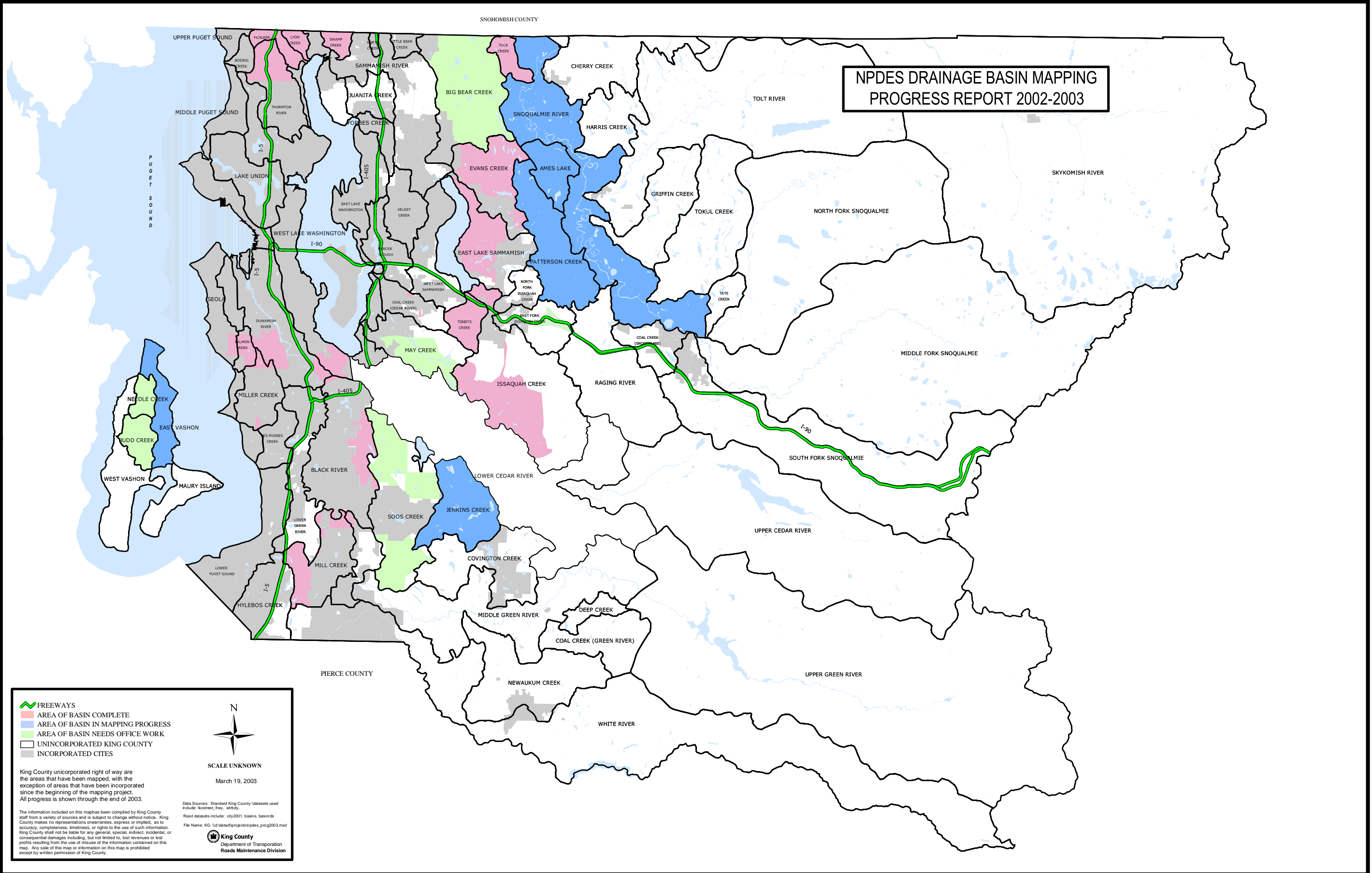


NPDES DRAINAGE BASIN MAPPING PROGRESS REPORT 2002-2003



Legend:

- FREEWAYS
- AREA OF BASIN COMPLETE
- AREA OF BASIN IN MAPPING PROGRESS
- AREA OF BASIN NEEDS OFFICE WORK
- UNINCORPORATED KING COUNTY
- INCORPORATED CITIES

Scale: SCALE UNKNOWN
March 19, 2003

King County unincorporated right of way are the areas that have been mapped, with the exception of areas that have been incorporated since the beginning of the mapping project. All progress is shown through the end of 2003.

The information included on this map has been compiled by King County staff from a variety of sources and is subject to change without notice. King County makes no representations or warranties, express or implied, as to accuracy, completeness, timeliness, or rights to the use of such information. King County shall not be liable for any general, special, indirect, incidental, or consequential damages including, but not limited to, lost revenues or lost profits resulting from the use of misuse of the information contained on this map. Any sale of this map or information on this map is prohibited except by written permission of King County.

Data Sources: Standard King County datasets used include: wctstreet, ltrwy, wtrbody.
Road datasets include: city2001, basins, basinsrds
File Name: KG:\data\projects\npdes_prog2003.mxd

King County
Department of Transportation
Roads Maintenance Division