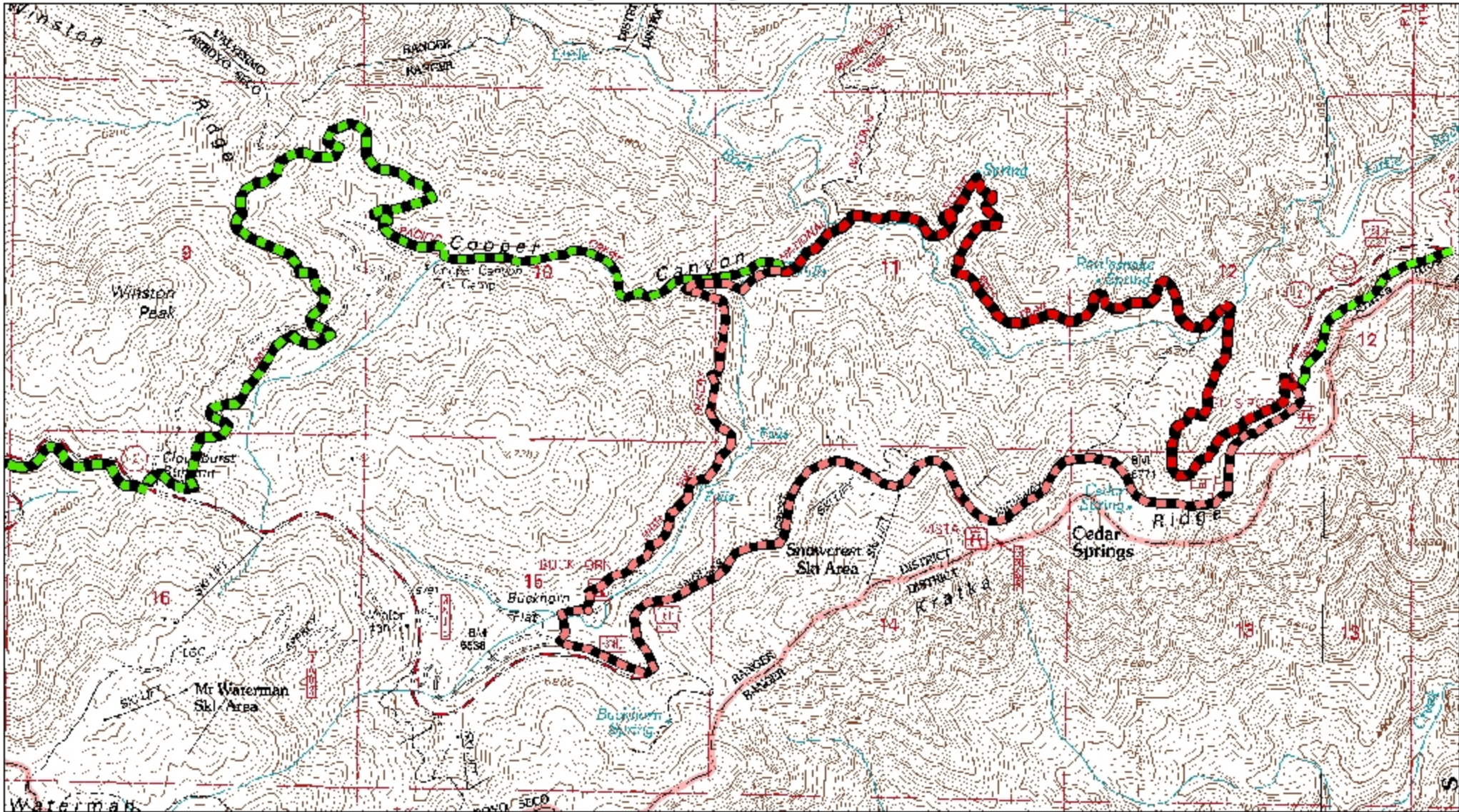





# Pacific Crest Trail (PCT) Detour Cooper Canyon Closure



## Legend

-  PCT Open
-  PCT Closed
-  PCT Detour Route



**To Pacific Crest Trail (PCT) hikers – (@ Eagles Roost)**

Detour of the PCT for the Mountain Yellow Legged Frog Closure

Please hike 2 miles west along the Angeles Crest HWY to Buckhorn Flat Campground.

At Buckhorn Flat Campground take the Burkhart Trail down to the PCT

**To Pacific Crest Trail (PCT) hikers – (@ Burkhart Trail)**

Detour of the PCT for the Mountain Yellow Legged Frog Closure

Please hike up the Burkhart Trail to Buckhorn Flat Campground.

At Buckhorn Flat Campground take the Angeles Crest HWY east 2 miles to the PCT at  
Eagles Roost.