

Order No. 06-08-07
Lassen National Forest
Cub Complex Fire
Emergency Area Closure

Pursuant to 36 CFR 261.50(a) and (b), and to promote public safety, the following acts are prohibited within the Cub Complex Fire Closure Area of the Lassen National Forest. This Order is effective from August 14, 2008, through December 31, 2008.

1. Going into or being upon National Forest System lands within the Cub Complex Fire Closure Area. The Cub Complex Fire Closure Area consists of the following 2 separate areas:
 - a. Closure Area No. 1. The boundary of Closure Area No. 1 begins at the intersection of State Highway 32 and the west section line of section 30 (Township 27 North, Range 4 East, Mount Diablo Base and Meridian), then continues east along State Highway 32 to its intersection with Forest Road No. 27N06, then continues south along Forest Road No. 27N06 to its intersection with Butte County Road 91422, then continues north along Butte County Road 91422 to its intersection with the Pacific Crest Trail (Township 27 North, Range 5 East, Section 32), then continues north along the Pacific Crest Trail to its intersection with the Carter Creek Trail (Township 27 North, Range 5 East, Section 16), then continues north along the Carter Creek Trail to its intersection with Forest Road No. 28N12, then continues north along Forest Road No. 28N12 to its intersection with the north section line of section 32 (Township 28 North, Range 5 East), then continues west along the section line to the northwest corner of section 31, then continues south along the section line to the southwest corner of the same section, then continues west along the section line to the northwest corner of section 2 (Township 27 North, Range 4 East), then continues south along the section line to the southwest corner of the same section, then continues west along the section line to the northwest corner of section 9, then continues south along the section line to the southwest corner of the same section, then continues west along the section line to the northwest corner of section 17, then continues south along the section line to the southwest corner of the same section, then continues west along the section line to the northwest corner of section 19, then continues south along the section line back to the starting point, as shown on Exhibit A.
 - b. Closure Area No. 2. The boundary of Closure Area No. 2 begins at the southwest corner of section 2 (Township 24 North, Range 5 East Mount Diablo Base and Meridian), then continues east and north along the Lassen National Forest boundary to its intersection with the north section line of section 33 (Township 25 North, Range 6 East), then continues west along the section line to the northwest corner of section 35 (Township 25 North,

Range 5 East), then continues south along the section line back to the starting point, as shown on Exhibit B.

36 CFR 261.53(e)

2. Being on any National Forest System road within the Cub Complex Fire Closure Area. 36 CFR 261.54(e).
3. Being on any National Forest System trail within the Cub Complex Fire Closure Area. 36 CFR 261.55(a).

Pursuant to 36 CFR 261.50(e), the following persons are exempt from this Order:

1. Persons with a permit from the Forest Service specifically authorizing the otherwise prohibited act or omission.
2. Owners or lessees of private land in the Cub Complex Fire Closure Area to the extent necessary to gain access to their land.
3. Persons who reside on private land in the Cub Complex Fire Closure Area to the extent necessary to gain access to their residences.
4. Any Federal, State, or local officer or member of an organized rescue or fire fighting force in the performance of an official duty.

These prohibitions are in addition to the general prohibitions found in 36 CFR Part 261, Subpart A.

Executed in Susanville, California this 13th day of August, 2008.



KATHLEEN S. MORSE
Forest Supervisor
Lassen National Forest

A violation of these prohibitions is punishable by a fine of not more than \$5,000 for an individual or \$10,000 for an organization, or imprisonment for not more than six months, or both. 16 USC 551 and 18 USC 3559, 3571, and 3581.

This Order supersedes Order No. 06-08-05, dated July 8, 2008 and Order No. 06-08-06, dated July 23, 2008.

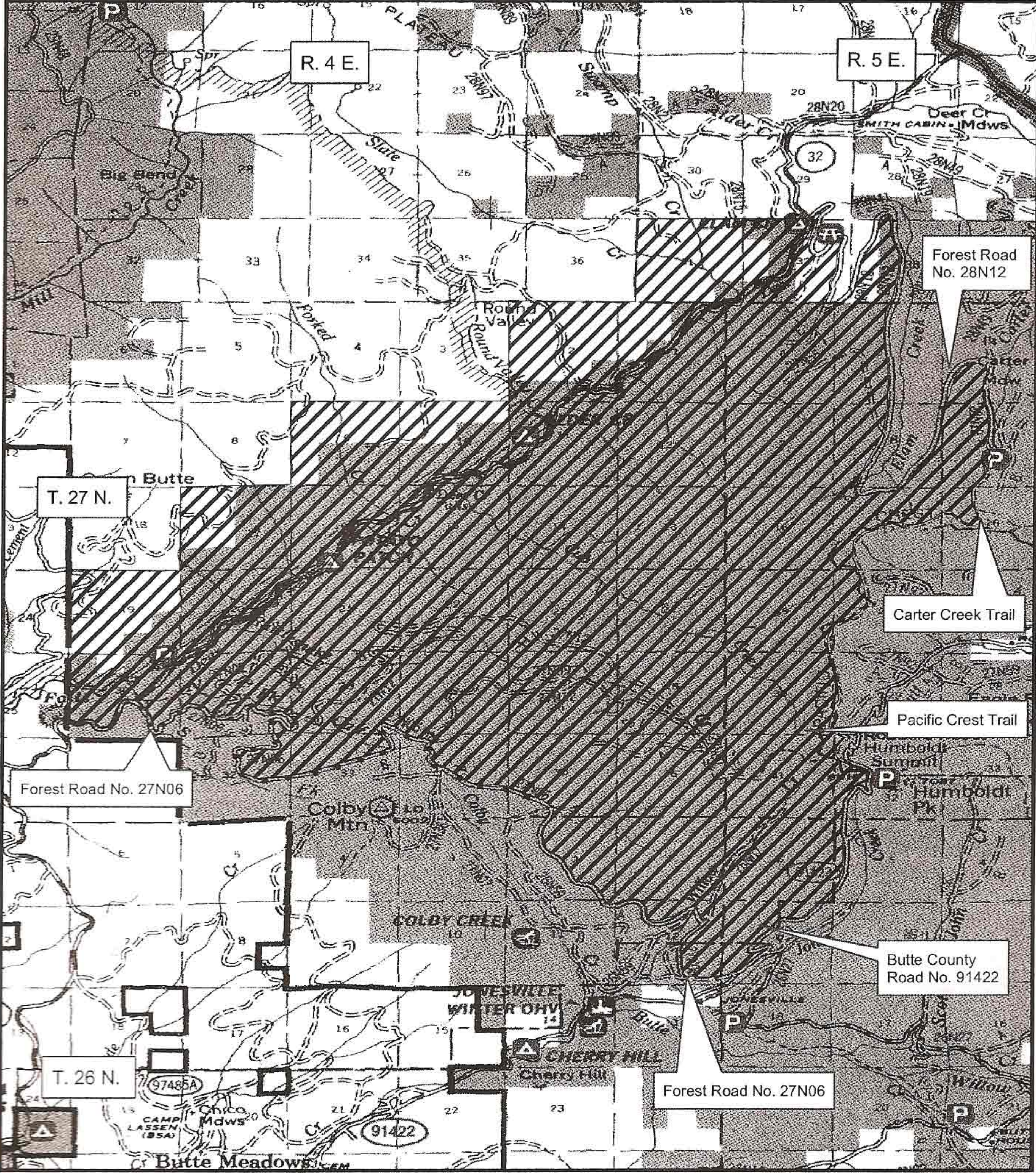



Exhibit A
Fire Emergency Closure

 Cub Complex Closure Area 1



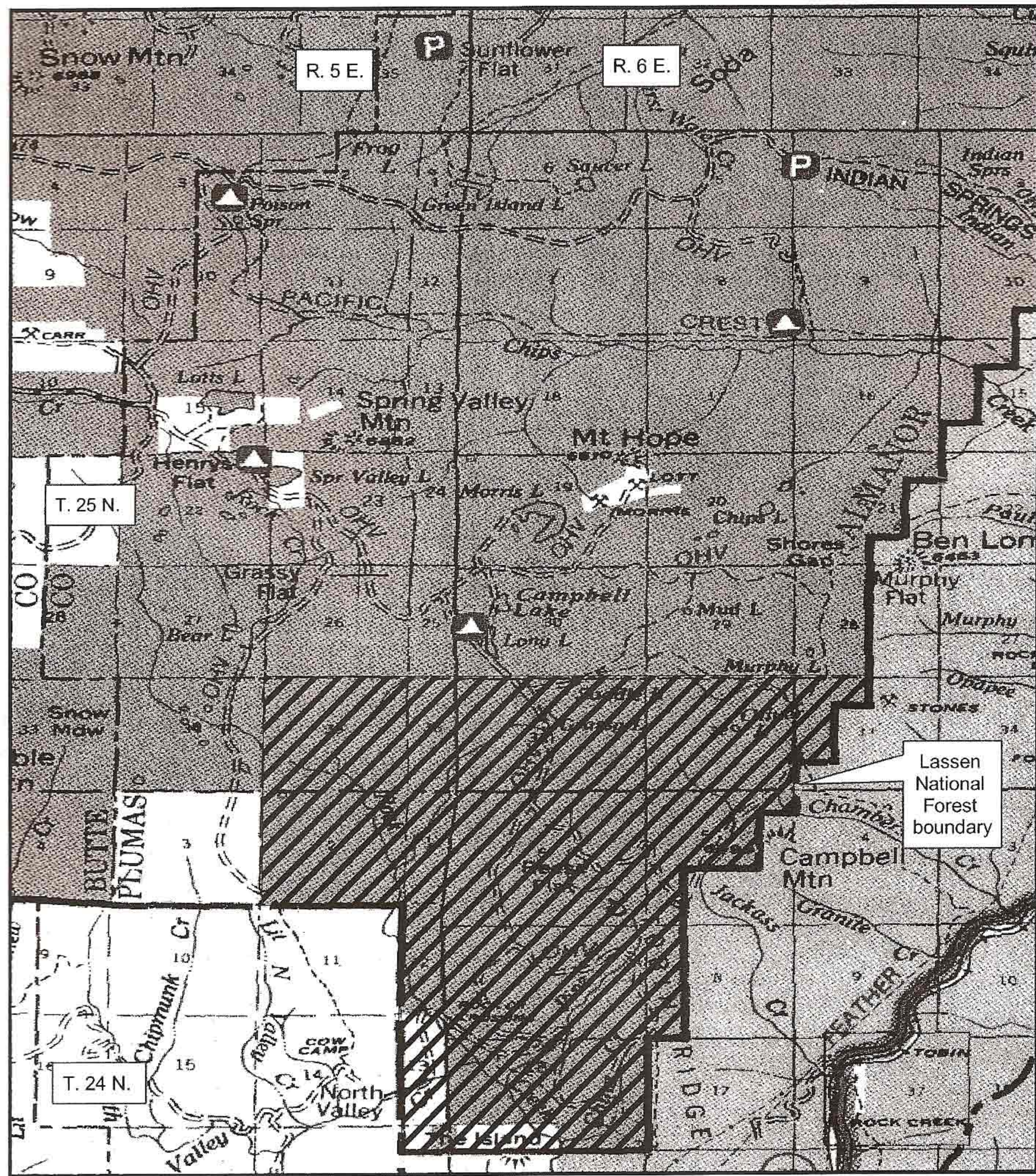



Exhibit B
Fire Emergency Closure

 Cub Complex Closure Area 2



0 0.5 1 2 Miles