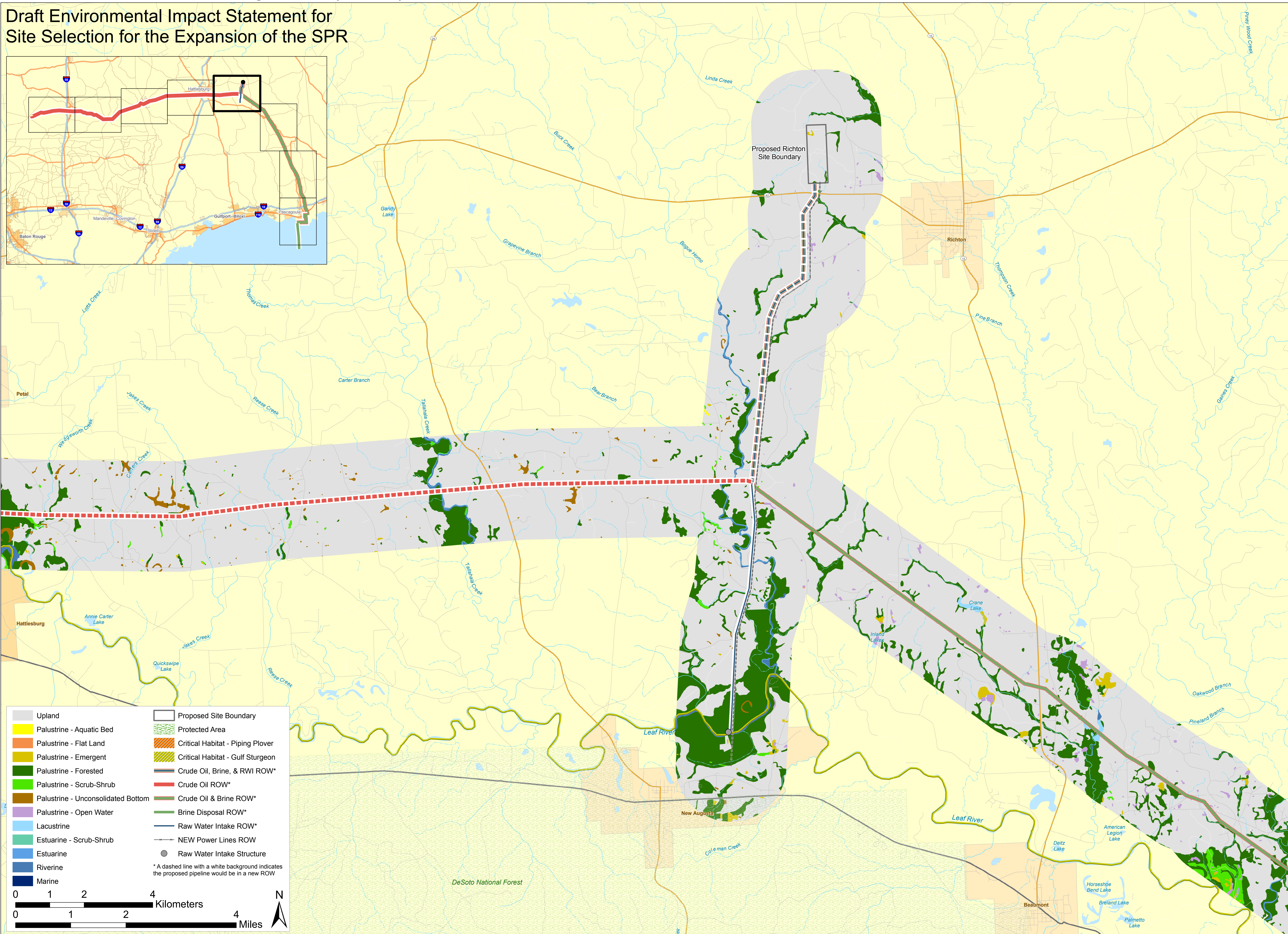
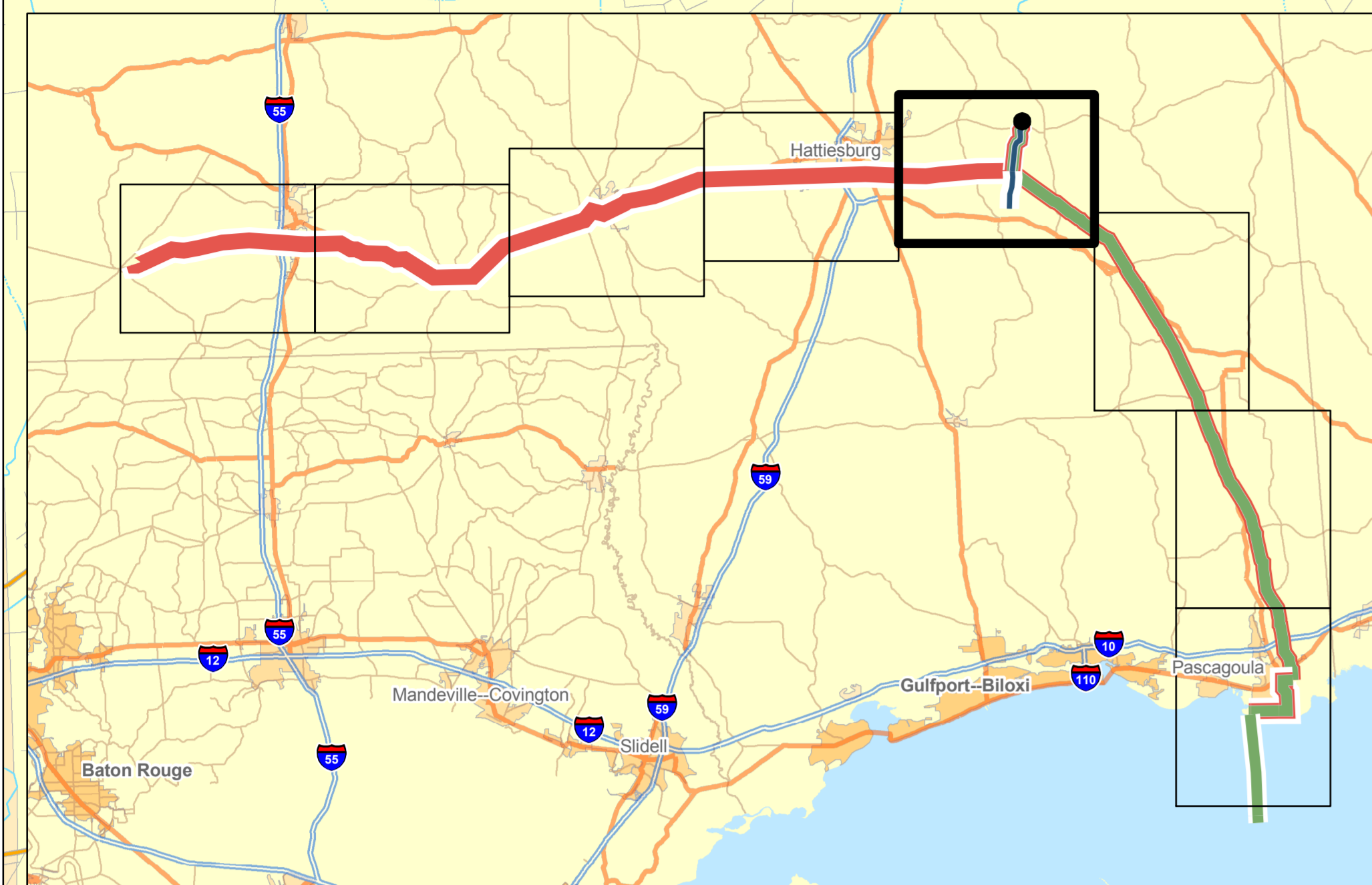


Richton 160 MMB Storage Site (5 of 8)

Draft Environmental Impact Statement for Site Selection for the Expansion of the SPR



Upland	Proposed Site Boundary
Palustrine - Aquatic Bed	Protected Area
Palustrine - Flat Land	Critical Habitat - Piping Plover
Palustrine - Emergent	Critical Habitat - Gulf Sturgeon
Palustrine - Forested	Crude Oil, Brine, & RWI ROW*
Palustrine - Scrub-Shrub	Crude Oil ROW*
Palustrine - Unconsolidated Bottom	Crude Oil & Brine ROW*
Palustrine - Open Water	Brine Disposal ROW*
Lacustrine	Raw Water Intake ROW*
Estuarine - Scrub-Shrub	NEW Power Lines ROW
Estuarine	Raw Water Intake Structure
Riverine	
Marine	

* A dashed line with a white background indicates the proposed pipeline would be in a new ROW

0 1 2 4 Kilometers
0 1 2 4 Miles

N