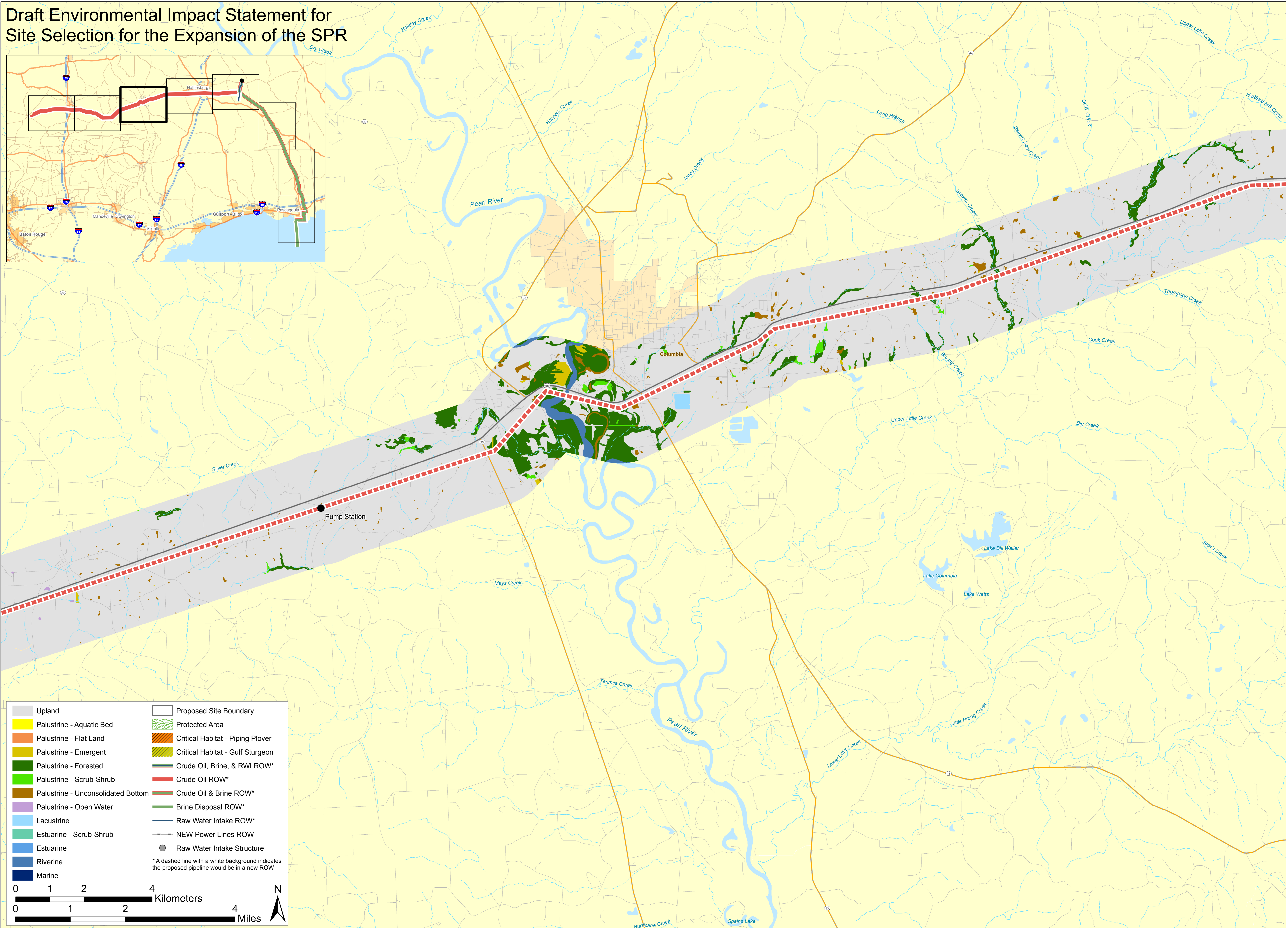
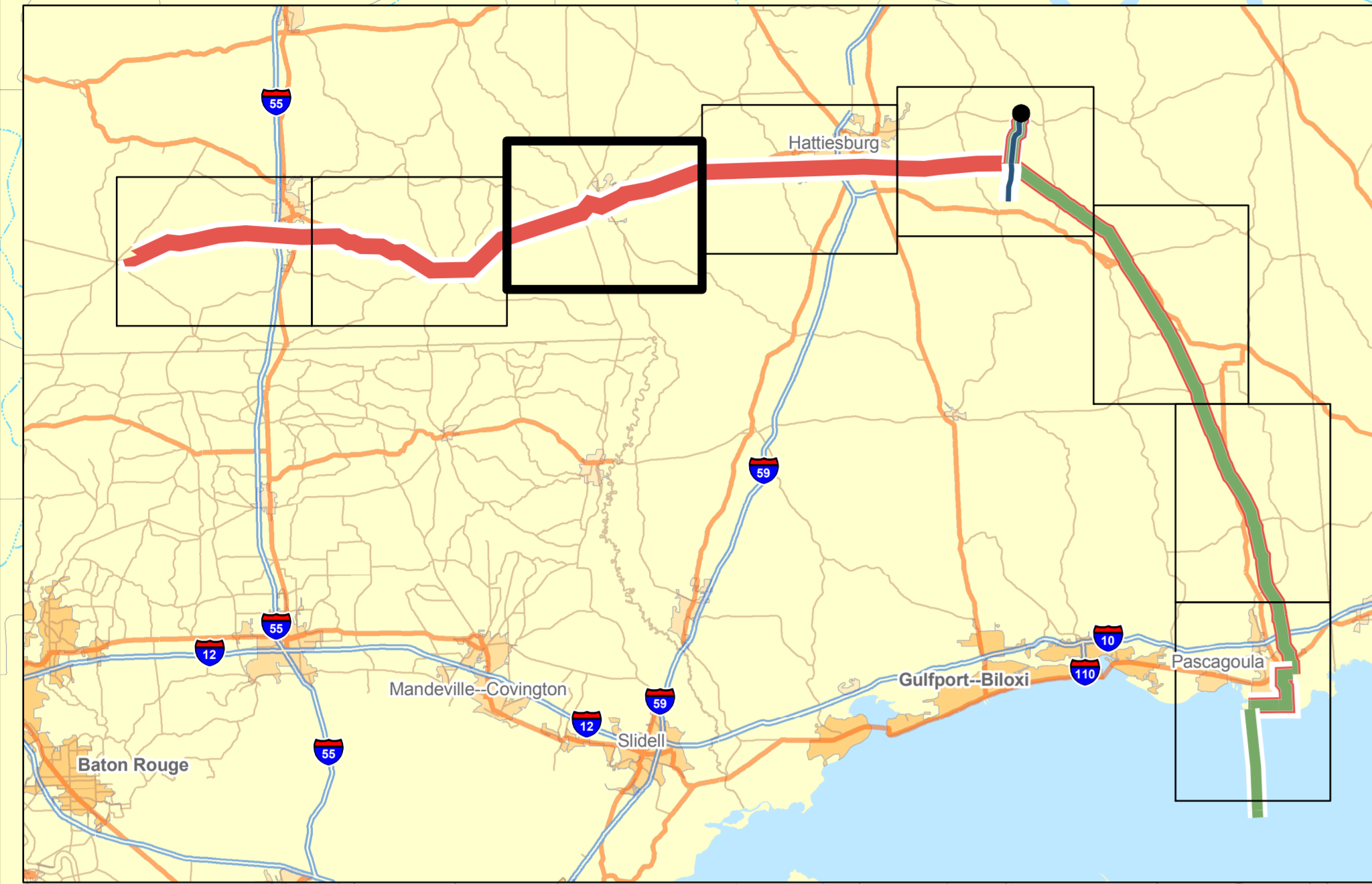


# Richton 160 MMB Storage Site (3 of 8)

## Draft Environmental Impact Statement for Site Selection for the Expansion of the SPR



|                                    |                                  |
|------------------------------------|----------------------------------|
| Upland                             | Proposed Site Boundary           |
| Palustrine - Aquatic Bed           | Protected Area                   |
| Palustrine - Flat Land             | Critical Habitat - Piping Plover |
| Palustrine - Emergent              | Critical Habitat - Gulf Sturgeon |
| Palustrine - Forested              | Crude Oil, Brine, & RWI ROW*     |
| Palustrine - Scrub-Shrub           | Crude Oil ROW*                   |
| Palustrine - Unconsolidated Bottom | Crude Oil & Brine ROW*           |
| Palustrine - Open Water            | Brine Disposal ROW*              |
| Lacustrine                         | Raw Water Intake ROW*            |
| Estuarine - Scrub-Shrub            | NEW Power Lines ROW              |
| Riverine                           | Raw Water Intake Structure       |
| Marine                             |                                  |

\* A dashed line with a white background indicates the proposed pipeline would be in a new ROW

