

# Michigan, 2005

## Primary and secondary syphilis

- **CASES:** Michigan reported 105 cases in 2005.
- **RATES:** Michigan ranked 38 among 50 states + DC + 3 territories: 1.0 case per 100,000 population compared to the U.S. rate of 3.0 cases per 100,000 population.

## Male-female rates of primary and secondary syphilis

- In Michigan, the rate among males was 1.7 per 100,000 population compared to the U.S. male rate of 5.1 per 100,000.
- The rate among females was 0.4 per 100,000 compared to the U.S. female rate of 0.9 per 100,000.

## Racial disparities of primary and secondary syphilis

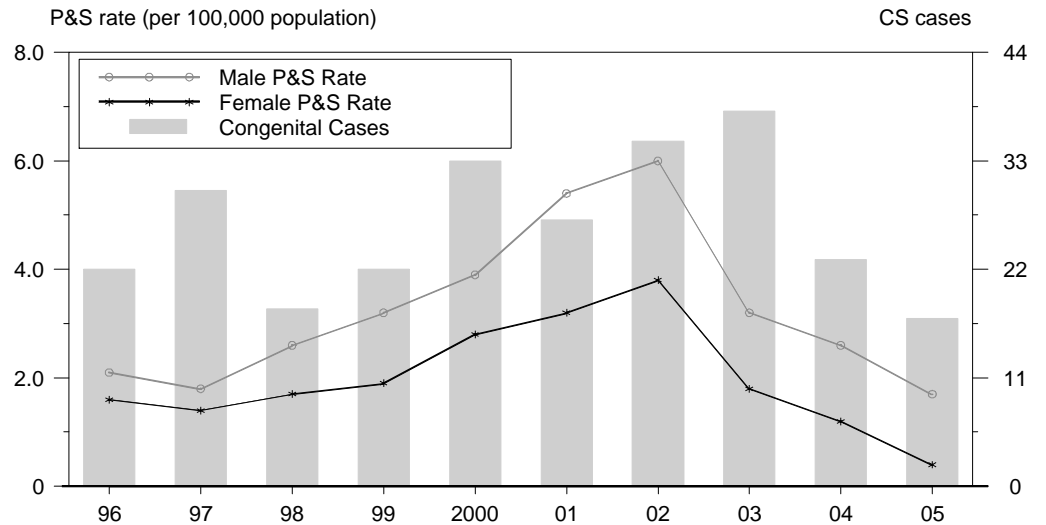
In Michigan, the race/ethnicity adjusted rates per 100,000 population were 0.4 among whites, 4.7 among blacks, 1.1 among Hispanics, 0.9 among Asian/Pacific Islanders, and 0.0 among American Indians/Alaska Natives.

- The rate among blacks was 11.8 times that of whites.
- The rate among Hispanics was 2.8 times that of whites.
- The rate among Asian/Pacific Islanders was 2.3 times that of whites.

## Congenital syphilis

- **CASES:** Michigan reported 17 cases in 2005.
- **RATES:** Michigan ranked 11 among 28 states + 2 territories reporting at least one congenital syphilis case: 13.0 cases per 100,000 live births compared to the U.S. rate of 8.0 cases per 100,000.

## Syphilis: P&S Rates and Congenital Cases, Michigan, 1996-2005



## Total P&S Syphilis Rates by County, Michigan, 2005

