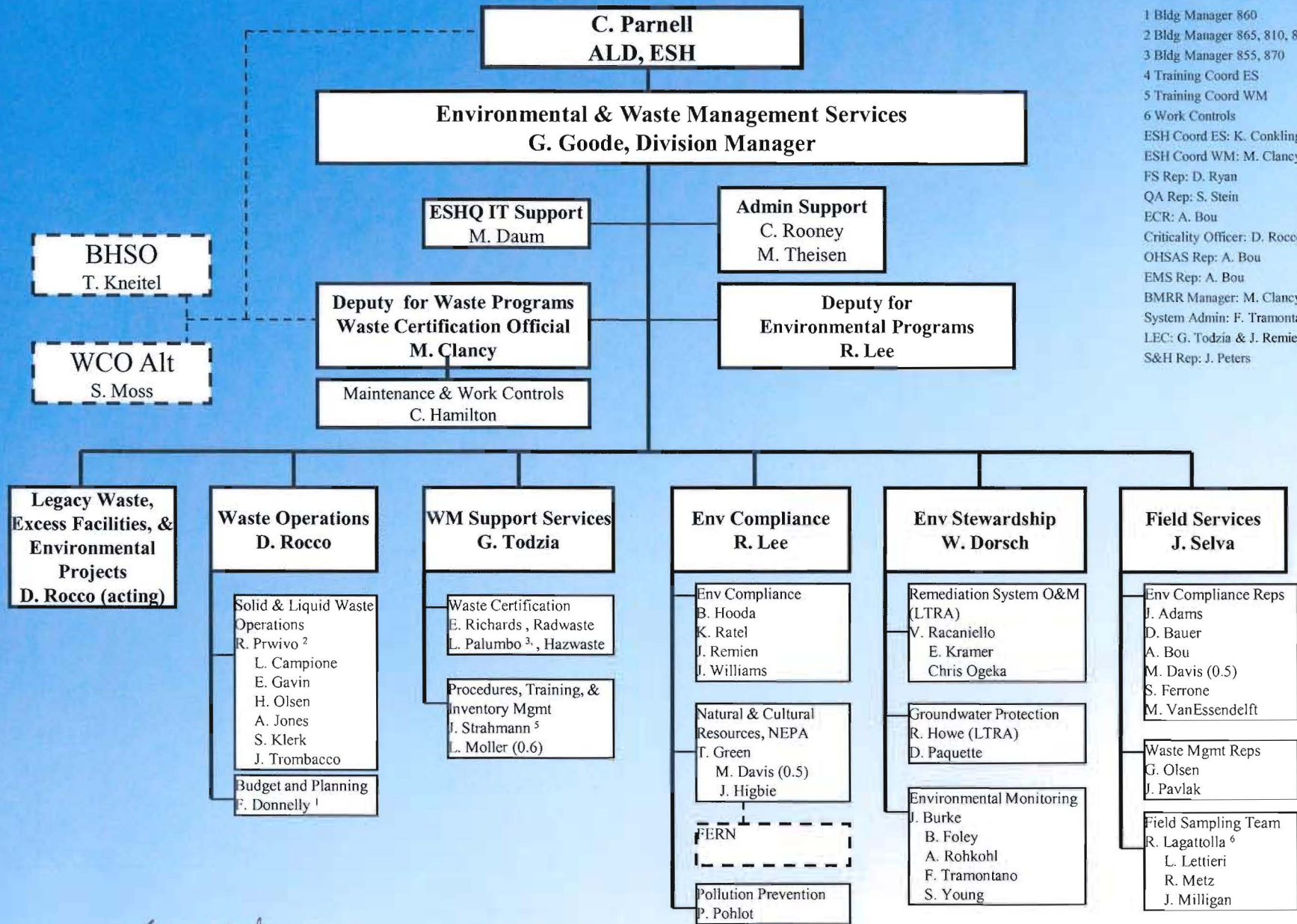


1 Bldg Manager 860
 2 Bldg Manager 865, 810, 811
 3 Bldg Manager 855, 870
 4 Training Coord ES
 5 Training Coord WM
 6 Work Controls
 ESH Coord ES: K. Conkling
 ESH Coord WM: M. Clancy
 FS Rep: D. Ryan
 QA Rep: S. Stein
 ECR: A. Bou
 Criticality Officer: D. Rocco
 OHSAS Rep: A. Bou
 EMS Rep: A. Bou
 BMRR Manager: M. Clancy
 System Admin: F. Tramontano
 LEC: G. Todzia & J. Remien
 S&H Rep: J. Peters



Approved: *[Signature]* 7/28/08
 Date: Monday, July 28, 2008