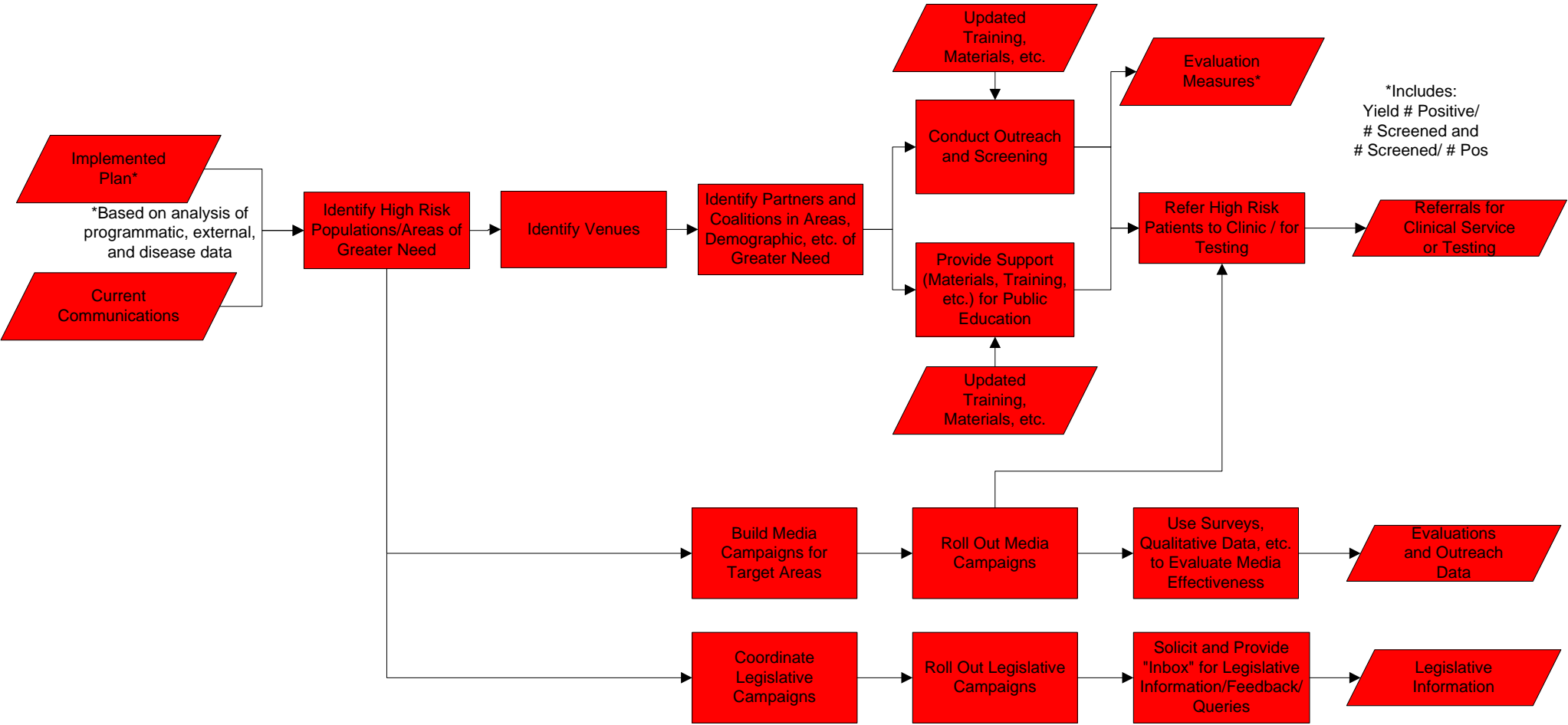


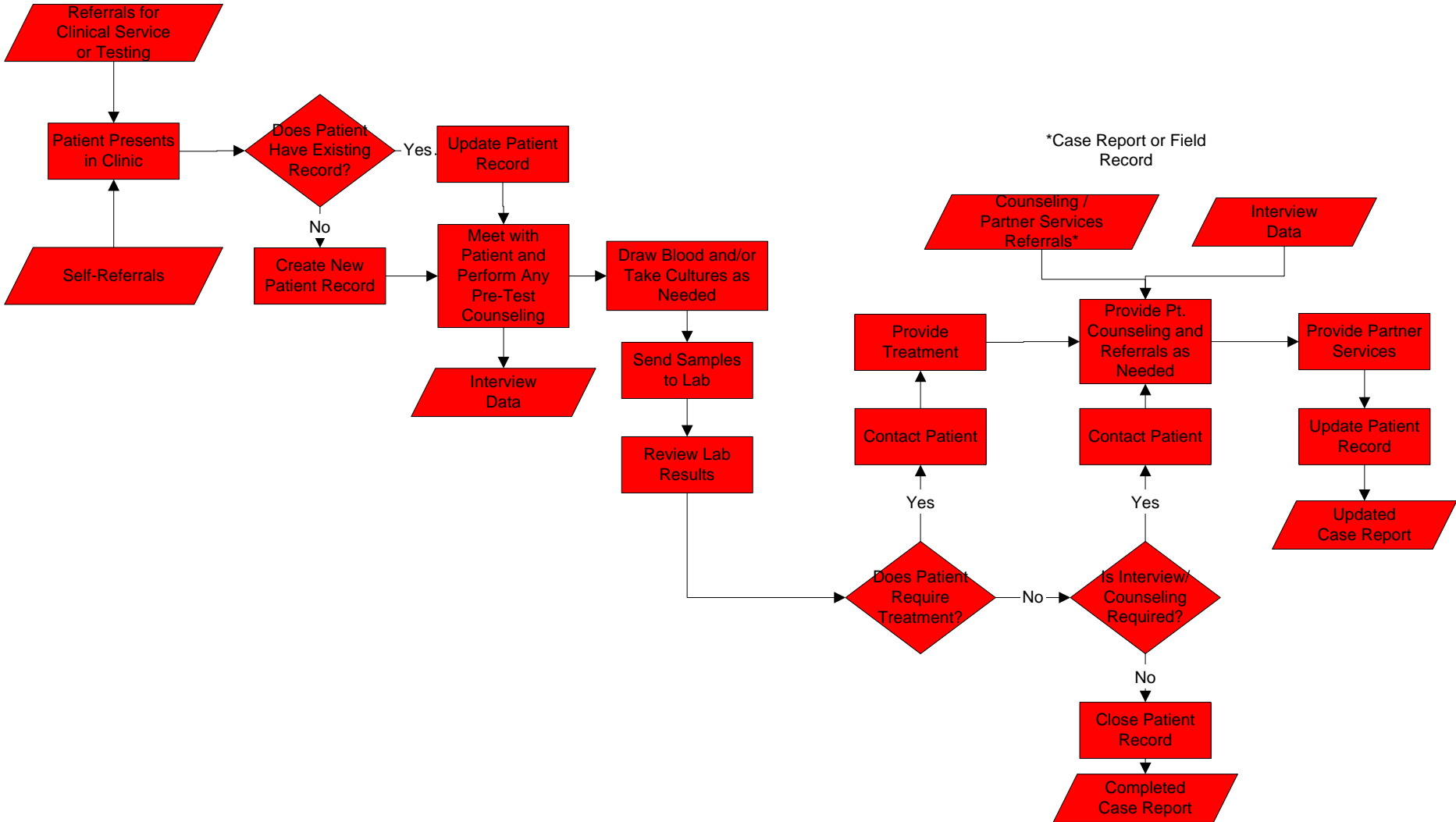
# Programmatic Interventions

## Outreach/Community Based Services



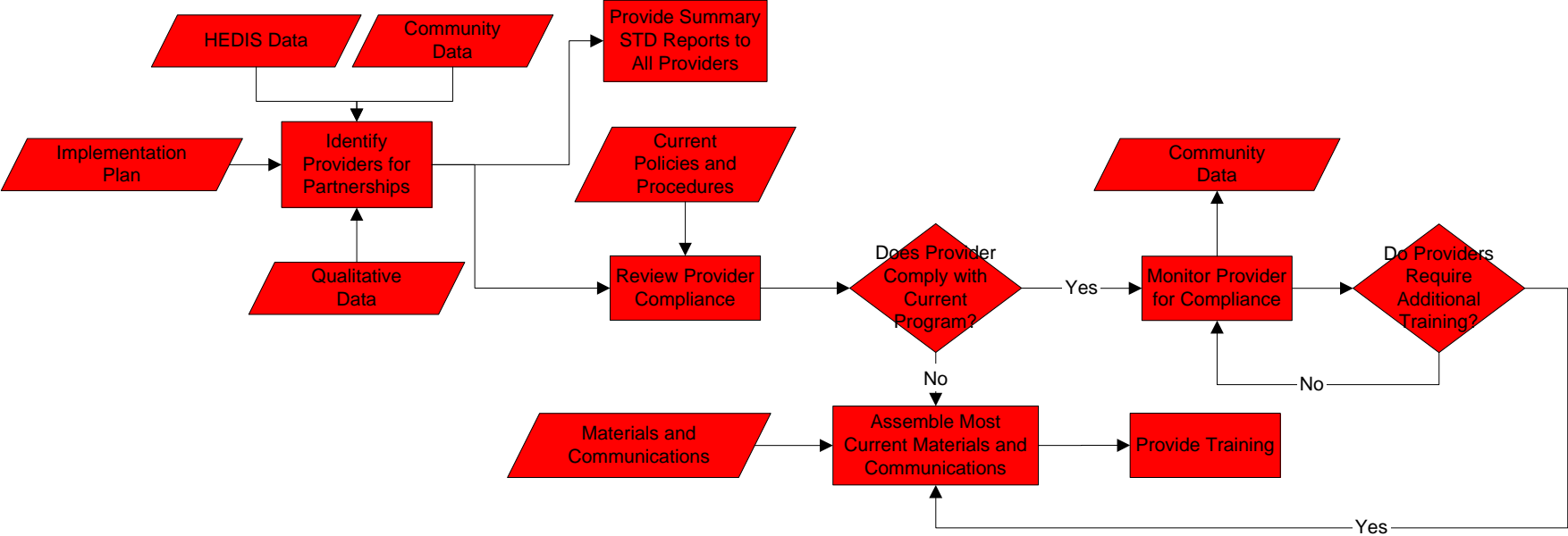
# Programmatic Interventions

## Direct Services to Clients



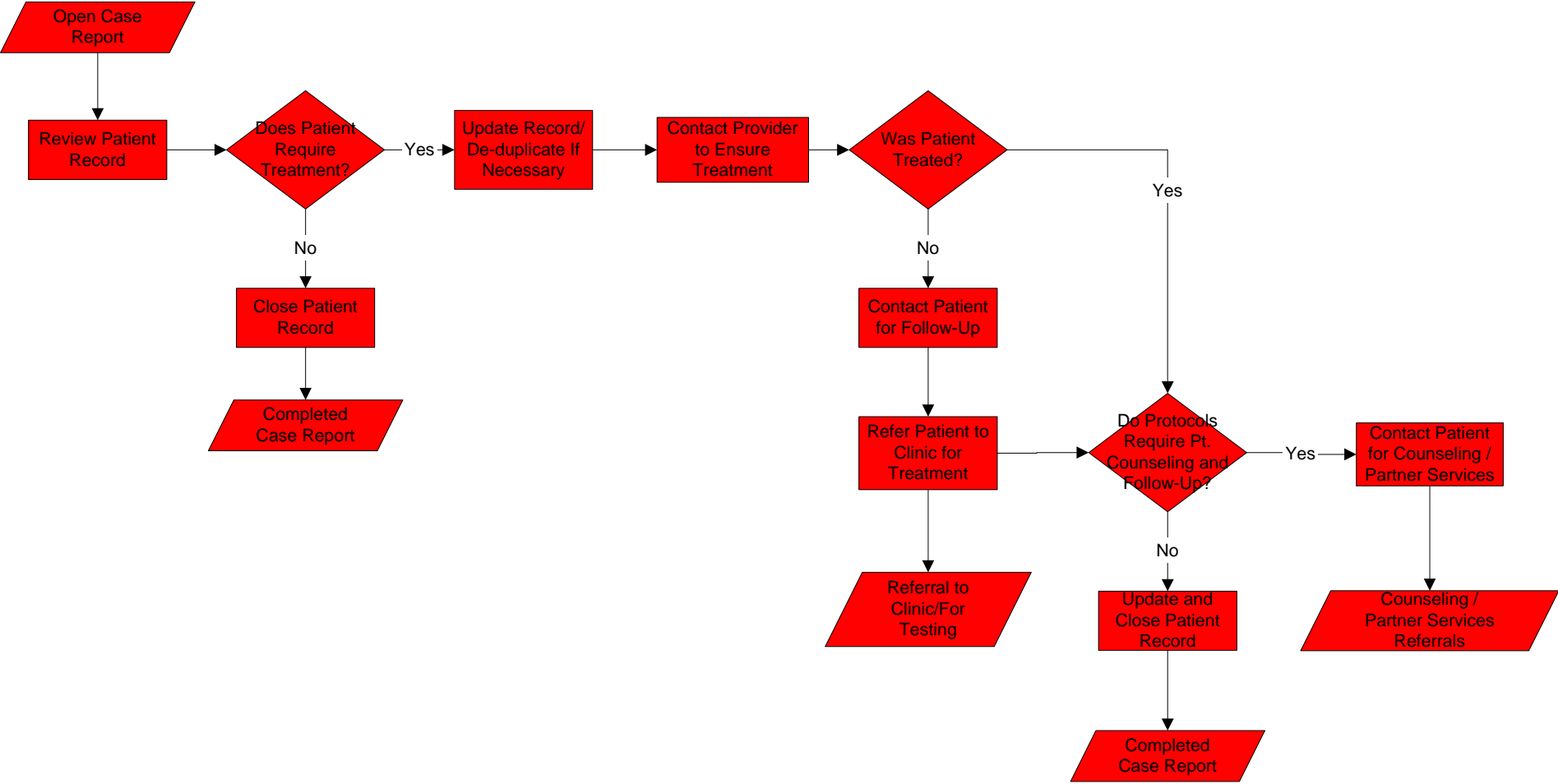
# Programmatic Interventions

## Improving Services by External Providers



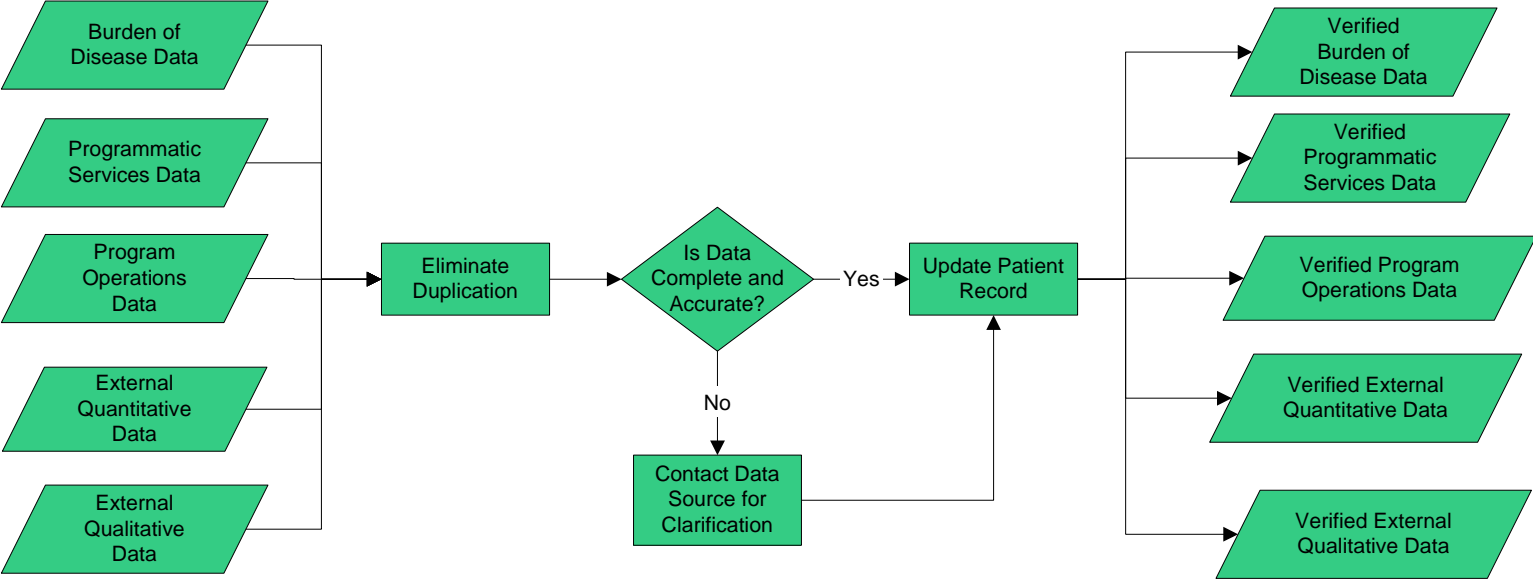
# Programmatic Interventions

## Treatment Assurance



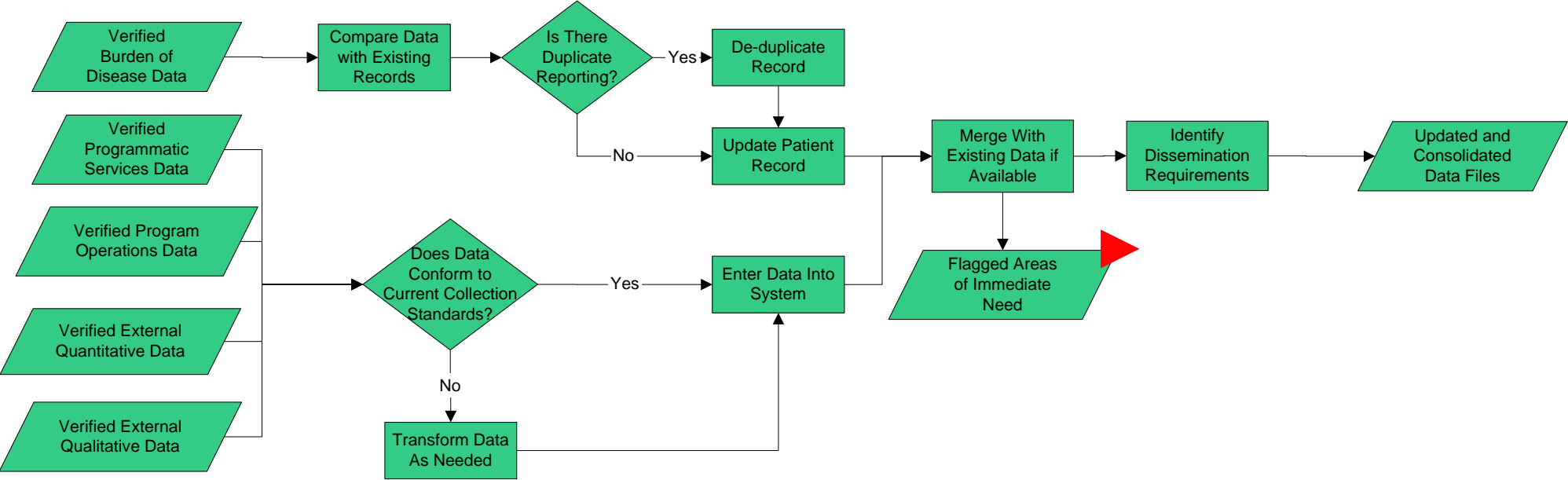
# Information and Data Management

## Collection



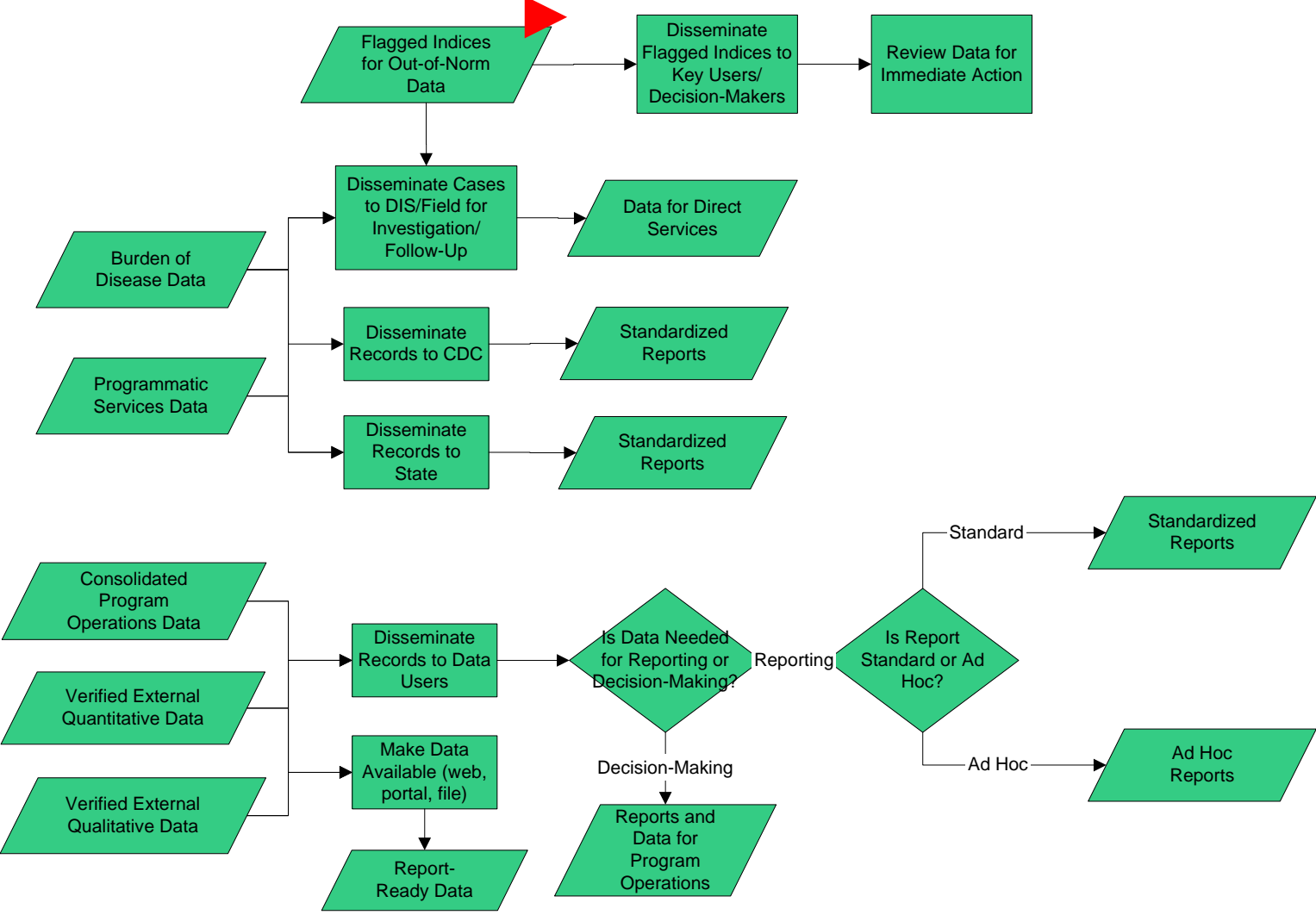
# Information and Data Management

## Processing and Consolidation



# Information and Data Management

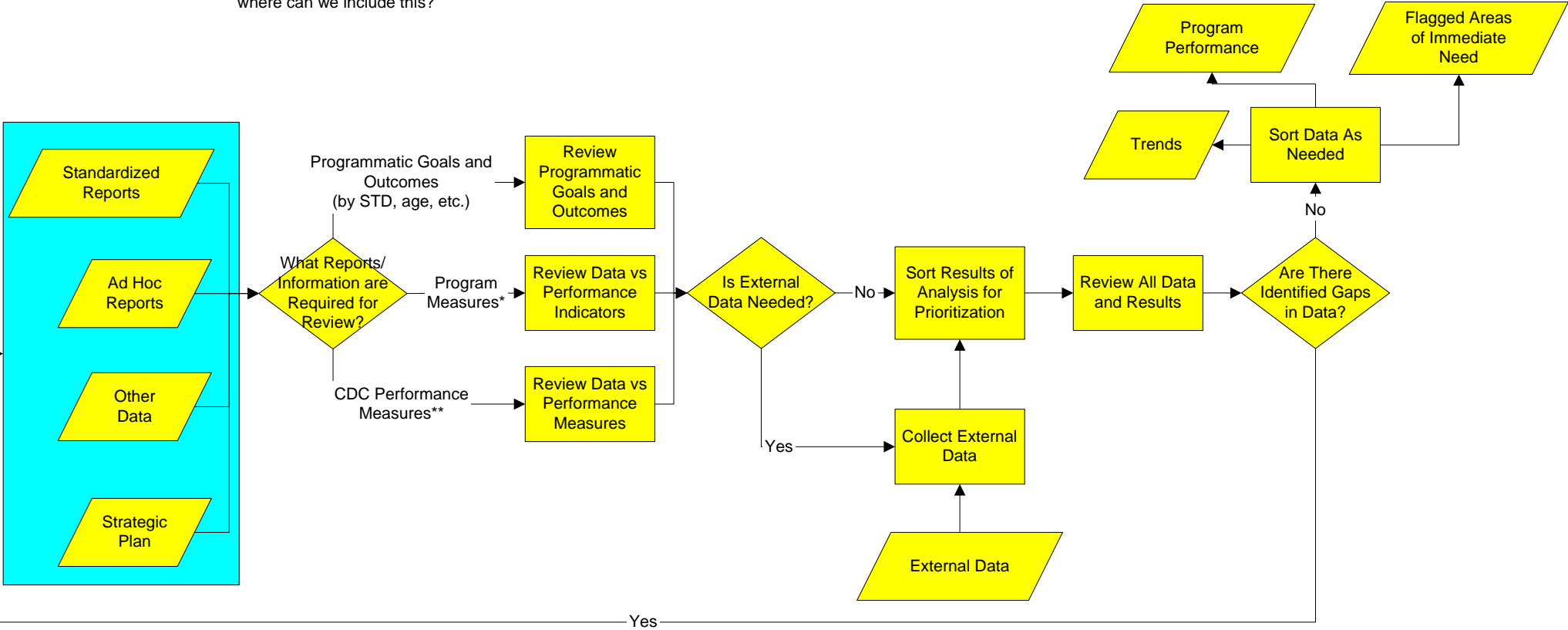
## Reporting and Dissemination



# Program Development

# Program Monitoring

Need to include additional Stakeholder involvement. Elizabeth, Jen, how/ where can we include this?

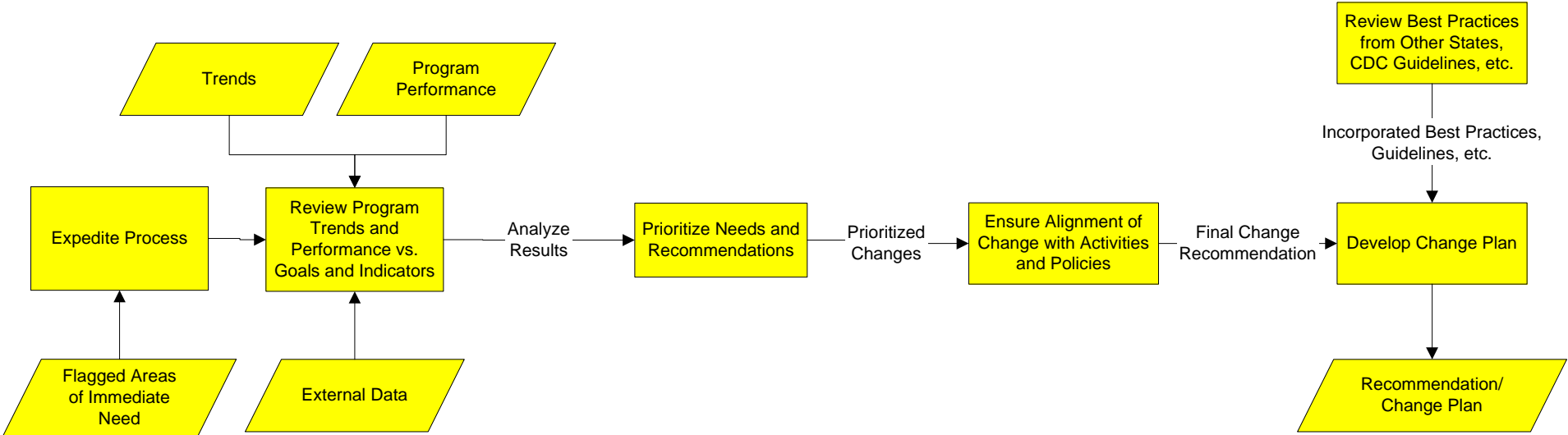


\*Performance Indicators - Targets Set by CDC for all Programs  
 \*\*Performance Measures - Targets Set by Program



# Program Development

## Priority Setting



# Program Development

## Implementation

