

Unemployment Insurance Data Summary

[Individual State Data](#)

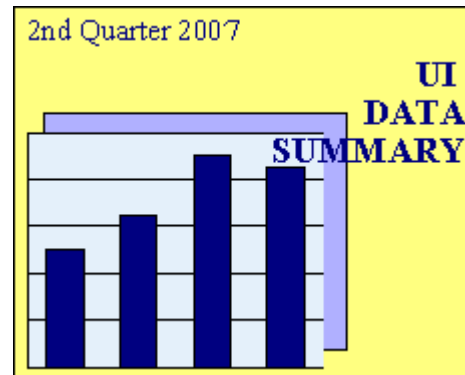
[US Summary Tables](#)

- [Summary Benefits Data](#)
- [Summary Financial Data](#)
- [Benefits and Duration Data](#)
- [Summary Labor Force Data](#)
- [Wage and Tax Rate Data](#)

[Charts](#)

[Glossary of data definitions](#)

[Choose another quarter](#)



The UI Data Summary is produced quarterly from state-reported data contained in the Unemployment Insurance Data Base (UIDB) as well as UI-related data from outside sources (e.g., Bureau of Labor Statistics data on employment and unemployment and U.S. Department of Treasury data on state UI trust fund activities). This data base is maintained by the Division of Actuarial Services, Office of Income Support (OIS), U.S. Department of Labor.

This report is intended to provide the user with a quick overview of the status of the UI system at the national and state levels. Tables are provided for each state and many data items are repeated on [summary tables](#) which show all states together. The [glossary](#) gives the definition of each data item in the report. Except for reciprocity rates, UCFE and UCX data is not included. Except for covered employment and wage data, which have a reporting/processing lag, all the data refers to the same quarter. This quarter is shown on the front cover and is also the first column heading on each individual state page. The year and quarter are indicated by the notation CYyyyy.q (e.g. CY1995.4). For many data items, the report shows -- in addition to the latest quarter -- data for the latest twelve months, the highest and lowest quarters historically, and the state's rank among all states. If a state has failed to report for a particular time period, estimated data are used; however, if the time period extends too far for reasonable estimates, blanks are displayed instead.

Your comments and suggestions are welcomed. For further information please contact **Dyana Cornell** at the Division of Fiscal and Actuarial Services, Room C-4514, 200 Constitution Ave., NW, Washington, DC 20210, phone (202) 693-3007. You can also reach the receptionist at (202) 693-3039. If you want quarterly copies mailed to you, add your name to the [Data summary mailing list](#).

NOTE: Starting with 2006.3, interstate initial claims and weeks claimed are reported in the paying state rather than the state of residence.

ALSO: Blank cells appearing in any section of this report indicates that information is unavailable.

ATTENTION:

Now available on the Department of Labor, Office of Workforce Security website, and by mail, is a new report called “**Significant Measures of State Unemployment Insurance Tax Systems**” (<http://www.ows.doleta.gov/unemploy/finance.asp>). This will be a yearly report containing a compilation of new and existing tax measures for each state, which is intended to provide users with the information necessary to evaluate and compare state UI tax systems. The report is produced by the Division of Fiscal and Actuarial Services in the Office of Workforce Security and calendar years 2006 and 2005 are now available.

Charts Categories: 2nd Quarter 2007

[Data Summary Home](#)

[Data Summary Glossary](#)

[Data Summary Mailing List](#)

[OWS Homepage](#)

Click on desired Chart Category to jump to that section:

[Regular Benefits](#)

[Trust Fund Balance](#)

[Revenues](#)

[Regular AWBA](#)

[Initial Claims](#)

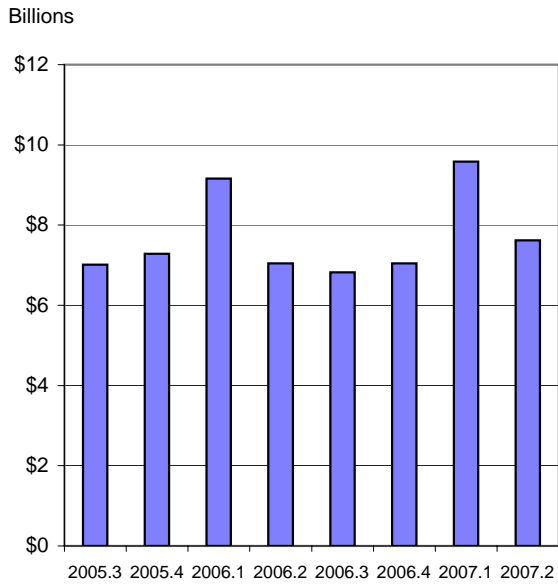
[Weeks Claimed](#)

[First Payments](#)

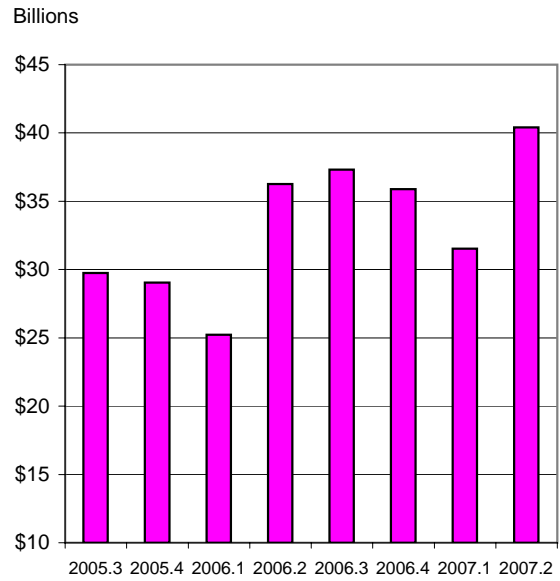
[Exhaustions](#)

Note: Blank cells appearing in any section of this report indicates that information is unavailable.

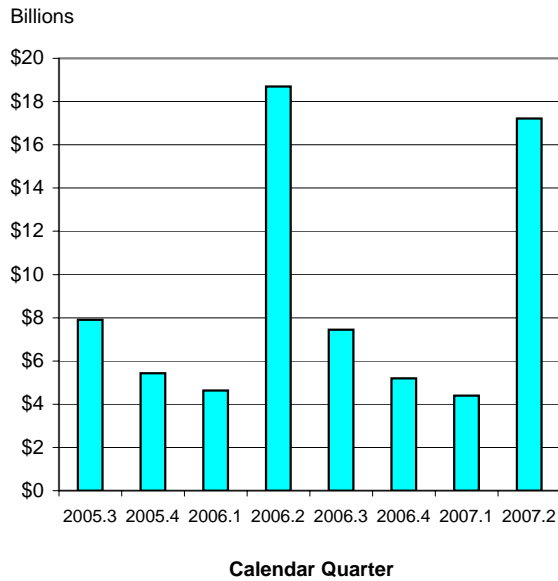
REGULAR BENEFITS



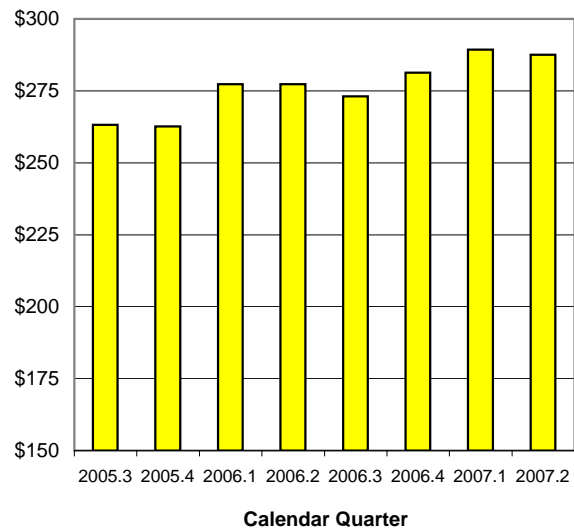
TRUST FUND BALANCE



REVENUES

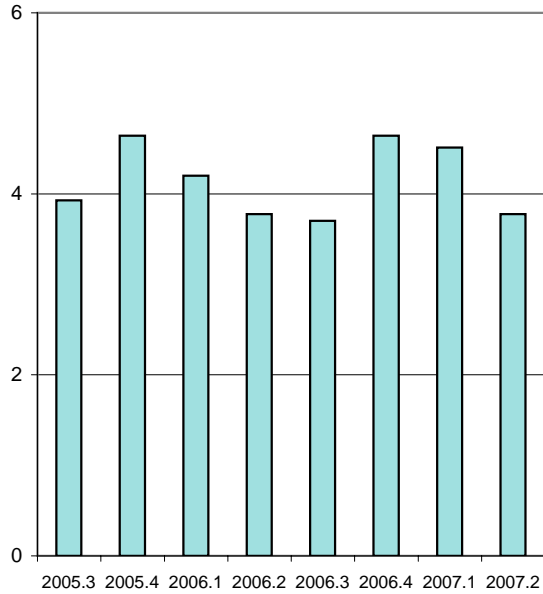


REGULAR AWBA



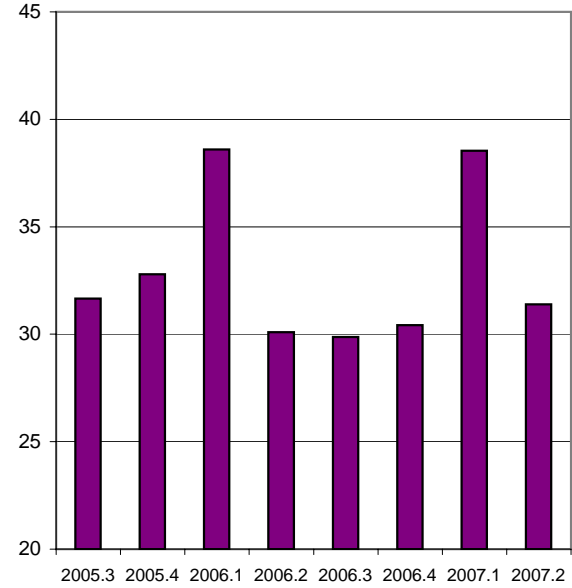
Millions

INITIAL CLAIMS



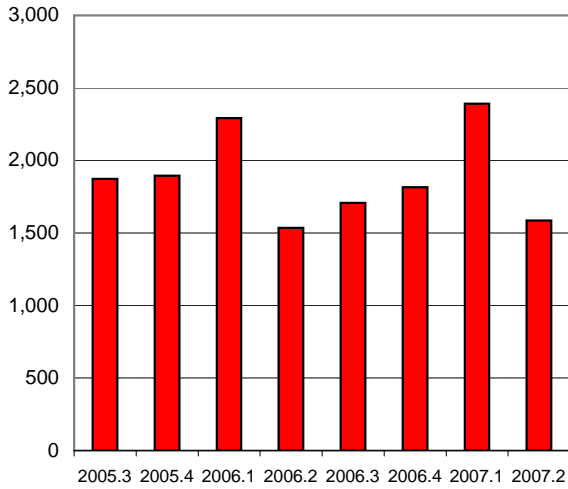
Millions

WEEKS CLAIMED



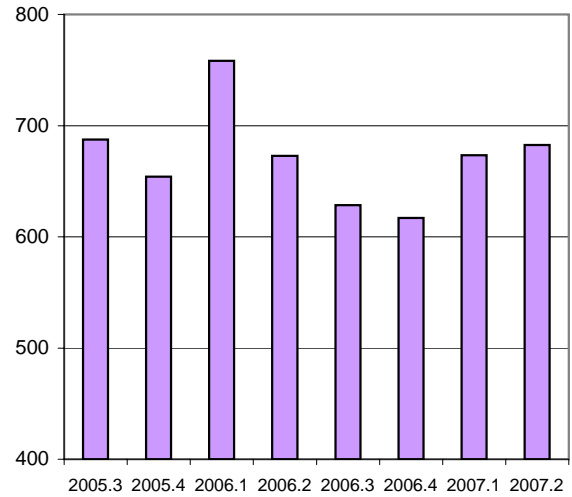
FIRST PAYMENTS

Thousands



EXHAUSTIONS

Thousands



Summary Tables: 2nd Quarter 2007

[Data Summary Home](#)

[Data Summary Glossary](#)

[Data Summary Mailing List](#)

[OWS Homepage](#)

Click on desired information to jump to that section:

[Summary Benefits Data](#)

[Summary Financial Data](#)

[Benefits and Duration Data](#)

[Labor Force Information](#)

[Wage and Tax Rate Information](#)

Note: Blank cells appearing in any section of this report indicates that information is unavailable.

Regular Benefits Information by State for CYQ 2007.2

State	Initial Claims	First Payments	Weeks Claimed	Weeks Compensated	Exhaustions	Exhaustion Rate
Alabama	50,322	19,873	322,194	286,178	7,314	26.2%
Alaska	19,737	8,137	154,568	136,110	4,322	37.3%
Arizona	55,537	23,098	371,726	312,607	7,508	40.6%
Arkansas	43,383	17,131	359,585	281,764	7,341	35.7%
California	559,843	234,250	4,834,458	4,200,884	112,566	43.1%
Colorado	26,784	15,599	285,722	227,084	7,174	41.2%
Connecticut	49,536	22,426	478,330	452,477	9,299	32.2%
Delaware	12,352	4,145	99,174	91,972	2,034	32.7%
District of Columbia	7,097	3,828	84,803	73,156	2,150	53.6%
Florida	155,060	77,920	1,261,213	1,044,416	28,914	46.1%
Georgia	100,827	44,156	636,922	534,390	16,708	36.9%
Hawaii	13,682	5,449	86,210	73,051	1,113	21.7%
Idaho	16,317	7,266	118,737	103,909	3,074	25.4%
Illinois	151,530	68,569	1,610,259	1,438,423	30,612	35.6%
Indiana	80,308	34,134	657,785	571,991	21,058	39.8%
Iowa	34,292	15,319	277,311	262,710	6,245	24.6%
Kansas	31,845	13,400	215,733	183,944	4,269	32.2%
Kentucky	58,131	18,544	362,222	352,734	5,991	21.1%
Louisiana	33,154	12,250	255,766	195,524	5,743	40.4%
Maine	14,671	7,248	139,715	122,464	3,120	31.1%
Maryland	47,002	20,102	396,855	344,925	7,656	31.5%
Massachusetts	96,277	43,075	1,016,453	917,386	20,164	35.0%
Michigan	153,997	72,098	1,730,480	1,530,359	44,266	34.0%
Minnesota	59,863	27,279	643,859	573,436	13,663	31.7%
Mississippi	35,288	13,547	237,722	191,879	4,204	30.8%
Missouri	81,403	28,894	552,480	449,713	10,652	31.0%
Montana	9,693	3,768	78,762	68,567	1,923	32.1%
Nebraska	14,079	6,686	117,889	90,655	3,784	45.0%
Nevada	37,475	16,885	295,298	264,697	6,648	34.3%
New Hampshire	11,706	5,415	89,704	78,790	1,193	16.6%
New Jersey	138,123	61,452	1,409,326	1,317,484	35,790	44.6%
New Mexico	13,776	7,345	145,973	125,854	3,259	41.1%
New York	227,504	93,655	2,127,535	1,852,307	41,223	37.7%
North Carolina	140,345	56,602	959,537	807,049	24,402	40.4%
North Dakota	4,399	1,970	35,577	30,817	1,298	31.3%
Ohio	126,235	51,174	1,199,977	1,000,531	20,317	28.2%
Oklahoma	26,948	9,690	181,019	154,694	3,969	38.3%
Oregon	74,931	28,230	526,234	455,978	10,206	30.1%
Pennsylvania	278,761	95,282	2,003,936	1,748,641	32,090	29.5%
Puerto Rico	42,885	25,616	504,311	451,002	11,837	45.5%
Rhode Island	19,162	7,405	159,796	143,974	3,929	37.4%
South Carolina	64,600	24,311	455,290	361,530	10,771	36.9%
South Dakota	4,102	1,359	22,696	18,283	235	11.2%
Tennessee	70,985	32,497	495,826	477,970	12,134	33.6%
Texas	160,982	72,217	1,140,617	972,594	25,317	37.2%
Utah	12,380	4,785	84,830	69,594	1,775	32.4%
Vermont	10,127	5,015	90,616	84,252	1,337	18.8%
Virgin Islands	788	437	7,492	6,775	164	40.4%
Virginia	56,579	23,013	401,220	336,675	9,560	33.8%
Washington	89,001	33,760	585,834	512,526	9,492	20.8%
West Virginia	13,550	7,827	152,708	134,866	2,624	24.9%
Wisconsin	133,301	50,672	894,246	833,843	19,454	25.7%
Wyoming	4,605	2,070	33,447	30,406	777	27.3%
United States	3,775,260	1,586,875	31,389,978	27,383,840	682,668	35.4%

Financial Information by State for CYO 2007.2

State	Revenues (000) {Last 12 Months}	TF Balance (000)	TF as % of Total Wages*	Interest Earned (000)	AHCM+	HCM+
Alabama	\$231,431	\$448,033	0.80	\$5,162	0.55	0.35
Alaska	\$160,455	\$288,639	3.05	\$3,451	0.99	0.71
Arizona	\$318,572	\$1,013,705	1.15	\$11,841	1.07	0.43
Arkansas	\$264,748	\$188,088	0.63	\$2,021	0.38	0.21
California	\$5,147,946	\$3,418,233	0.56	\$36,802	0.27	0.18
Colorado	\$449,449	\$608,109	0.74	\$6,783	0.56	0.49
Connecticut	\$549,280	\$635,727	0.85	\$7,054	0.57	0.24
Delaware	\$85,131	\$190,920	1.23	\$2,241	1.02	0.48
District of Columbia	\$109,586	\$412,231	1.58	\$4,787	1.12	0.81
Florida	\$1,006,423	\$2,504,742	0.98	\$29,576	1.12	0.49
Georgia	\$577,176	\$1,382,813	1.03	\$15,834	1.02	0.45
Hawaii	\$137,606	\$545,564	3.23	\$6,598	1.90	1.51
Idaho	\$138,487	\$174,426	1.00	\$2,088	0.45	0.34
Illinois	\$2,369,718	\$1,747,259	0.80	\$17,880	0.26	0.23
Indiana	\$575,297	\$442,759	0.51	\$4,685	0.46	0.31
Iowa	\$322,458	\$665,338	1.67	\$7,814	0.87	0.68
Kansas	\$272,843	\$659,836	1.51	\$7,626	0.97	0.72
Kentucky	\$366,966	\$284,320	0.58	\$2,938	0.26	0.19
Louisiana	\$199,821	\$1,420,515	2.60	\$16,989	0.96	0.85
Maine	\$106,733	\$457,358	3.12	\$5,482	1.64	1.12
Maryland	\$427,597	\$1,068,349	1.24	\$12,658	0.82	0.55
Massachusetts	\$1,616,183	\$1,258,104	0.92	\$13,561	0.41	0.23
Michigan	\$1,624,104	\$157,490	0.11	\$1,504	0.03	0.02
Minnesota	\$891,660	\$407,285	0.46	\$4,472	0.29	0.23
Mississippi	\$125,180	\$741,997	2.71	\$8,898	1.78	1.39
Missouri	\$571,350	\$92,447	0.12	\$863	N.A.	N.A.
Montana	\$85,585	\$251,973	2.31	\$3,008	1.41	0.79
Nebraska	\$138,505	\$265,750	1.14	\$3,022	1.06	0.65
Nevada	\$369,478	\$768,293	1.72	\$9,144	0.99	0.61
New Hampshire	\$62,664	\$256,016	1.18	\$3,056	1.35	0.50
New Jersey	\$1,864,903	\$725,608	0.43	\$7,580	0.23	0.13
New Mexico	\$110,633	\$577,951	2.69	\$6,978	2.03	1.73
New York	\$2,437,360	\$726,244	0.20	\$6,633	0.07	0.04
North Carolina	\$942,981	\$382,132	0.31	\$3,615	0.12	0.07
North Dakota	\$55,804	\$115,009	1.49	\$1,365	0.75	0.68
Ohio	\$1,102,105	\$585,841	0.37	\$5,917	0.14	0.10
Oklahoma	\$230,211	\$799,616	1.87	\$9,488	1.44	1.32
Oregon	\$680,595	\$1,811,160	3.52	\$21,674	1.38	1.08
Pennsylvania	\$2,347,048	\$1,778,233	0.99	\$18,818	0.28	0.23
Puerto Rico	\$189,747	\$542,010	3.38	\$6,323	1.02	0.74
Rhode Island	\$201,150	\$180,224	1.25	\$2,076	0.47	0.32
South Carolina	\$291,415	\$265,462	0.51	\$3,090	0.34	0.17
South Dakota	\$23,392	\$20,281	0.23	\$215	0.28	0.22
Tennessee	\$362,714	\$667,377	0.78	\$7,838	0.56	0.35
Texas	\$1,158,681	\$2,121,087	0.58	\$26,221	0.39	0.36
Utah	\$226,658	\$767,292	2.26	\$9,100	1.35	1.08
Vermont	\$62,633	\$183,544	2.39	\$2,170	1.36	0.81
Virgin Islands	\$1,492	\$26,681	2.54	\$332	1.14	0.99
Virginia	\$449,385	\$812,590	0.63	\$9,411	0.67	0.43
Washington	\$1,309,414	\$3,425,110	3.52	\$40,204	1.36	0.87
West Virginia	\$143,819	\$253,254	1.47	\$2,917	0.46	0.36
Wisconsin	\$698,131	\$650,854	0.81	\$7,453	0.38	0.29
Wyoming	\$54,372	\$224,998	2.78	\$2,680	1.14	0.96
United States	\$34,247,075	\$40,398,877	0.88	\$459,937	0.51	0.35

+ Refers to most recent calendar year. Fourth and first quarter issues publish measure based on extrapolated wages; Second and third quarter issues publish measure based on actual wages.

* Based on extrapolated wages for the most recent 12 months.

N.A. : Not Applicable -- These states have outstanding debt exceeding their fund balances

Benefits and Duration Information by State for CYQ 2007.2

State	Regular Benefits Paid (000)	Extended Benefits Paid (000)	AWBA	Average Duration	Avg Benefits per First Payment
Alabama	\$53,053	\$0	\$188.00	11.4	\$2,084
Alaska	\$26,221	\$0	\$196.66	14.4	\$2,819
Arizona	\$61,580	\$0	\$199.12	14.5	\$2,846
Arkansas	\$68,993	\$0	\$255.63	14.6	\$3,492
California	\$1,200,477	\$0	\$296.41	16.7	\$4,740
Colorado	\$72,621	\$0	\$323.90	13.4	\$4,233
Connecticut	\$133,129	\$0	\$309.19	16.3	\$4,789
Delaware	\$23,682	\$0	\$257.61	17.4	\$4,449
District of Columbia	\$20,460	\$0	\$286.35	19.0	\$5,253
Florida	\$245,984	\$0	\$238.02	14.1	\$3,265
Georgia	\$137,739	\$0	\$263.89	11.1	\$2,812
Hawaii	\$26,777	\$0	\$377.87	13.6	\$4,900
Idaho	\$24,795	\$0	\$252.86	11.3	\$2,630
Illinois	\$435,501	\$0	\$303.98	17.3	\$5,200
Indiana	\$160,735	\$0	\$288.50	13.1	\$3,698
Iowa	\$72,485	\$0	\$288.54	12.7	\$3,501
Kansas	\$54,402	\$0	\$300.51	13.4	\$3,883
Kentucky	\$95,725	\$0	\$279.79	13.1	\$3,552
Louisiana	\$40,067	\$15	\$206.88	15.3	\$3,033
Maine	\$30,325	\$0	\$253.99	14.1	\$3,462
Maryland	\$95,676	\$0	\$281.17	14.7	\$4,046
Massachusetts	\$338,772	\$0	\$379.00	17.7	\$6,459
Michigan	\$436,878	\$0	\$292.33	14.8	\$4,242
Minnesota	\$189,257	\$0	\$337.84	15.7	\$5,066
Mississippi	\$32,932	\$0	\$176.65	13.5	\$2,309
Missouri	\$98,564	\$0	\$224.30	13.8	\$2,944
Montana	\$14,775	\$0	\$236.93	14.8	\$3,146
Nebraska	\$20,450	\$0	\$232.50	12.3	\$2,797
Nevada	\$73,113	\$0	\$282.20	14.0	\$3,852
New Hampshire	\$19,856	\$0	\$259.21	12.2	\$3,081
New Jersey	\$461,417	\$0	\$363.10	17.9	\$6,086
New Mexico	\$31,195	\$0	\$249.74	16.2	\$3,964
New York	\$533,514	\$0	\$300.84	17.6	\$4,775
North Carolina	\$215,711	\$0	\$274.87	13.4	\$3,514
North Dakota	\$7,976	\$0	\$260.81	11.1	\$2,921
Ohio	\$283,152	\$0	\$287.09	15.1	\$4,302
Oklahoma	\$38,033	\$0	\$252.04	14.7	\$3,498
Oregon	\$126,546	\$0	\$283.54	14.2	\$3,864
Pennsylvania	\$527,847	\$0	\$326.12	16.2	\$4,758
Puerto Rico	\$48,862	\$0	\$111.88	18.8	\$2,017
Rhode Island	\$49,866	\$0	\$356.13	15.3	\$5,194
South Carolina	\$79,929	\$0	\$227.60	13.5	\$2,955
South Dakota	\$3,995	\$0	\$223.49	11.2	\$2,464
Tennessee	\$103,779	\$0	\$222.83	13.5	\$2,869
Texas	\$269,872	\$0	\$286.74	14.0	\$3,772
Utah	\$20,027	\$0	\$294.60	13.3	\$3,812
Vermont	\$23,029	\$0	\$283.22	14.5	\$3,945
Virgin Islands	\$2,000	\$0	\$310.38	14.3	\$3,878
Virginia	\$88,121	\$0	\$267.05	12.5	\$3,248
Washington	\$161,534	\$0	\$332.40	13.5	\$4,201
West Virginia	\$30,965	\$0	\$236.68	13.5	\$3,086
Wisconsin	\$200,445	\$0	\$265.46	13.1	\$3,150
Wyoming	\$8,284	\$0	\$276.48	12.3	\$3,253
United States	\$7,621,123	\$16	\$287.52	15.1	\$4,139

Labor Force Information by State (Levels in thousands) for CYQ 2007.2

State	IUR (%)	TUR (%)	Covered Employment **	Civilian Labor Force	Total Unemployment	Insured Unemployment	
						Regular Programs *	All Programs +
Alabama	1.4	3.2	1,891	2,208	71.6	26.1	26.1
Alaska	3.6	6.0	284	346	20.8	10.7	10.7
Arizona	1.2	3.6	2,620	3,018	107.4	30.6	30.6
Arkansas	2.4	5.1	1,157	1,384	70.0	28.3	28.3
California	2.4	5.0	15,424	18,123	911.8	369.8	369.8
Colorado	1.0	3.5	2,213	2,663	93.5	22.5	22.5
Connecticut	2.2	4.3	1,676	1,875	81.4	36.0	36.0
Delaware	1.8	3.4	420	444	15.0	7.6	7.6
District of Columbia	0.8	5.5	483	319	17.5	4.4	4.4
Florida	1.3	3.4	7,919	9,183	309.2	99.9	99.9
Georgia	1.3	4.3	3,988	4,826	208.2	51.9	51.9
Hawaii	1.1	2.6	594	654	17.0	6.7	6.7
Idaho	1.5	2.3	640	756	17.7	9.8	9.8
Illinois	2.1	4.9	5,805	6,700	328.1	122.9	122.9
Indiana	1.8	4.5	2,886	3,247	147.5	51.3	51.3
Iowa	1.5	3.4	1,467	1,660	56.7	21.6	21.6
Kansas	1.3	4.3	1,326	1,483	64.2	16.7	16.7
Kentucky	1.6	5.4	1,767	2,071	111.1	29.3	29.3
Louisiana	1.1	4.4	1,812	2,006	87.6	20.4	20.4
Maine	1.9	4.4	590	713	31.3	10.9	10.9
Maryland	1.4	3.6	2,434	2,998	108.8	33.6	33.6
Massachusetts	2.4	4.8	3,188	3,416	163.0	76.8	76.8
Michigan	3.2	6.9	4,195	5,048	349.1	133.6	133.6
Minnesota	1.9	4.4	2,655	2,949	130.8	49.1	49.1
Mississippi	1.7	6.4	1,110	1,317	84.4	19.3	19.3
Missouri	1.6	4.6	2,680	3,066	141.4	43.8	43.8
Montana	1.5	2.2	418	501	11.0	6.5	6.5
Nebraska	1.0	3.0	895	986	30.0	9.1	9.1
Nevada	1.8	4.5	1,268	1,337	59.5	23.1	23.1
New Hampshire	1.2	3.9	625	743	29.1	7.3	7.3
New Jersey	2.7	4.2	3,942	4,488	188.4	105.7	105.7
New Mexico	1.5	3.7	791	941	34.4	11.8	11.8
New York	2.0	4.2	8,460	9,424	395.9	164.0	164.0
North Carolina	1.9	4.8	3,979	4,535	217.3	74.9	74.9
North Dakota	0.9	3.4	332	368	12.5	2.9	2.9
Ohio	1.8	5.7	5,267	5,997	341.5	93.9	93.9
Oklahoma	1.0	4.3	1,485	1,747	75.9	14.5	14.5
Oregon	2.5	5.0	1,698	1,922	96.2	41.5	41.5
Pennsylvania	2.8	4.1	5,569	6,264	255.1	153.7	153.7
Puerto Rico	3.9	10.7	1,026	1,405	150.3	40.4	40.4
Rhode Island	2.5	4.6	479	576	26.5	12.1	12.1
South Carolina	2.0	5.4	1,851	2,163	116.9	36.7	36.7
South Dakota	0.5	3.0	376	440	13.3	2.0	2.0
Tennessee	1.5	4.3	2,722	3,034	129.3	39.4	39.4
Texas	0.9	4.1	9,917	11,535	475.7	93.6	93.6
Utah	0.6	2.5	1,164	1,343	33.8	6.9	6.9
Vermont	2.2	3.9	301	360	14.1	6.7	6.7
Virgin Islands	1.1		44			0.5	0.5
Virginia	0.9	2.9	3,512	4,062	119.8	31.3	31.3
Washington	1.6	4.4	2,814	3,369	147.0	46.4	46.4
West Virginia	1.8	4.5	690	819	36.6	12.5	12.5
Wisconsin	2.5	5.1	2,766	3,089	157.3	69.3	69.3
Wyoming	0.9	3.2	263	289	9.1	2.5	2.5
United States	1.8	4.4	133,880	152,810	6,771.0	2,442.5	2,442.5

* Includes State UI, UCFE, and UCX

** Wages and Covered Employment lag the rest of the Data Summary information by 6 months.

+ Does not include TEUC

Note: Blank cells appearing in any section of this report indicates that information is unavailable.

Wage and Tax Rate Information by State for CYQ 2006.4

State	Total Wages (000)	Total Wages (Taxed Employers) (000)	Taxable Wages (000)	Average Tax Rates on:		Current Taxable Wage Base
				Taxable Wages	Total Wages	
Alabama	\$17,797,780	\$14,639,343	\$1,445,437	1.6	0.4	\$8,000
Alaska	\$3,018,191	\$2,335,430	\$804,462	3.0	1.8	\$30,100
Arizona	\$27,201,803	\$22,901,652	\$2,254,915	1.5	0.3	\$7,000
Arkansas	\$9,685,672	\$7,893,566	\$1,076,102	2.5	0.9	\$10,000
California	\$197,284,938	\$162,337,159	\$11,787,431	4.4	0.8	\$7,000
Colorado	\$24,980,715	\$21,350,610	\$2,561,249	2.1	0.6	\$10,000
Connecticut	\$23,975,304	\$19,562,976	\$2,010,263	2.6	0.7	\$15,000
Delaware	\$4,888,020	\$3,997,051	\$316,656	2.4	0.5	\$8,500
District of Columbia	\$8,332,995	\$6,881,783	\$392,931	2.0	0.3	\$9,000
Florida	\$80,474,219	\$67,650,990	\$6,569,394	1.9	0.5	\$7,000
Georgia	\$41,613,331	\$35,276,750	\$3,664,283	1.9	0.5	\$8,500
Hawaii	\$5,707,405	\$4,439,790	\$1,964,116	1.3	0.9	\$35,300
Idaho	\$5,526,096	\$4,566,137	\$1,864,907	1.5	1.0	\$30,200
Illinois	\$69,737,929	\$58,004,485	\$5,335,828	4.4	1.1	\$11,500
Indiana	\$26,929,923	\$22,367,117	\$1,789,946	2.9	0.7	\$7,000
Iowa	\$13,235,072	\$10,586,592	\$2,447,498	1.6	0.9	\$22,000
Kansas	\$12,400,273	\$11,424,054	\$2,287,947	2.3	0.8	\$8,000
Kentucky	\$16,103,497	\$12,979,823	\$1,307,033	2.7	0.7	\$8,000
Louisiana	\$17,469,536	\$14,328,588	\$1,457,141	1.5	0.4	\$7,000
Maine	\$5,115,853	\$3,868,630	\$547,694	1.8	0.7	\$12,000
Maryland	\$28,942,243	\$22,936,429	\$1,992,469	2.2	0.5	\$8,500
Massachusetts	\$44,326,485	\$36,481,002	\$5,030,422	3.8	1.2	\$14,000
Michigan	\$46,286,606	\$37,043,436	\$2,920,766	4.6	1.1	\$9,000
Minnesota	\$28,871,336	\$22,955,133	\$4,936,516	1.8	0.9	\$25,000
Mississippi	\$8,931,915	\$7,207,754	\$802,880	1.7	0.5	\$7,000
Missouri	\$25,602,024	\$20,812,263	\$2,407,659	2.2	0.7	\$11,000
Montana	\$3,322,293	\$2,858,119	\$1,155,269	1.2	0.8	\$22,700
Nebraska	\$7,921,752	\$6,213,649	\$611,585	2.5	0.7	\$9,000
Nevada	\$13,392,643	\$11,690,196	\$3,606,475	1.4	0.8	\$24,600
New Hampshire	\$7,427,516	\$6,102,450	\$422,292	1.5	0.3	\$8,000
New Jersey	\$53,895,335	\$44,252,939	\$9,047,689	1.6	0.7	\$26,600
New Mexico	\$7,081,707	\$5,611,761	\$1,403,999	1.0	0.5	\$18,600
New York	\$121,361,423	\$95,138,944	\$5,794,896	4.0	0.7	\$8,500
North Carolina	\$38,596,498	\$31,510,841	\$6,138,711	2.0	0.9	\$17,800
North Dakota	\$2,735,485	\$2,058,036	\$523,755	1.3	0.7	\$21,300
Ohio	\$52,547,948	\$42,131,629	\$3,867,755	2.6	0.7	\$9,000
Oklahoma	\$12,852,929	\$10,894,626	\$1,973,405	1.4	0.6	\$13,200
Oregon	\$16,700,041	\$13,327,257	\$4,504,705	2.3	1.3	\$29,000
Pennsylvania	\$60,185,708	\$47,471,300	\$3,554,883	5.4	1.2	\$8,000
Puerto Rico	\$6,477,038	\$4,374,135	\$524,543	3.2	1.1	\$7,000
Rhode Island	\$5,015,129	\$3,742,578	\$646,251	3.3	1.4	\$14,000
South Carolina	\$16,408,221	\$13,426,213	\$1,277,087	2.2	0.5	\$7,000
South Dakota	\$2,954,531	\$2,311,868	\$236,728	0.8	0.2	\$8,500
Tennessee	\$27,091,906	\$22,842,684	\$1,877,676	1.9	0.4	\$7,000
Texas	\$111,548,772	\$95,308,875	\$9,276,022	2.3	0.5	\$9,000
Utah	\$10,795,546	\$9,015,913	\$2,870,258	1.3	0.7	\$25,400
Vermont	\$2,729,479	\$2,014,106	\$185,650	2.5	0.7	\$8,000
Virgin Islands	\$400,638	\$267,391	\$92,298	0.3	0.2	\$20,500
Virginia	\$39,401,791	\$33,423,095	\$2,674,438	1.8	0.4	\$8,000
Washington	\$30,656,202	\$24,397,136	\$8,082,345	2.4	1.4	\$31,400
West Virginia	\$5,733,902	\$4,462,320	\$507,111	2.8	0.8	\$8,000
Wisconsin	\$26,707,741	\$21,359,589	\$2,184,085	2.9	0.9	\$10,500
Wyoming	\$2,573,505	\$2,051,999	\$479,563	1.7	0.8	\$18,100
United States	\$1,480,954,844	\$1,213,088,192	\$143,495,417	2.7	0.7	\$11,411

Individual State Pages: 2nd Quarter 2007

[Data Summary Home](#)

[Data Summary Glossary](#)

[Data Summary Mailing List](#)

[OWS Homepage](#)

Click on Desired State:

Alaska	Alabama	Arkansas	Arizona	California	Colorado
Connecticut	District of Columbia	Delaware	Florida	Georgia	Hawaii
Iowa	Idaho	Illinois	Indiana	Kansas	Kentucky
Louisiana	Massachusetts	Maryland	Maine	Michigan	Minnesota
Missouri	Mississippi	Montana	North Carolina	North Dakota	Nebraska
New Hampshire	New Jersey	New Mexico	Nevada	New York	Ohio
Oklahoma	Oregon	Pennsylvania	Puerto Rico	Rhode Island	South Carolina
South Dakota	Tennessee	Texas	Utah	Virginia	Virgin Islands
Vermont	Washington	Wisconsin	West Virginia	Wyoming	United States

Note: Blank cells appearing in any section of this report indicates that information is unavailable.

UI Data Summary for **Alabama**

CYQ: 2007.2

Benefits	(Quarterly)	Past 12 Months	Rank	High Value : Qtr		Low Value : Qtr	
Benefits Paid (000):	\$53,053	\$223,100	31	\$87,642	2002.1	\$7,540	1973.3
Initial Claims:	50,322	239,970	24	199,272	1982.1	27,174	1973.2
First Payments:	19,873	107,044	26	87,774	1982.1	11,594	1973.2
Weeks Claimed:	322,194	1,369,227	28	1,008,116	1983.1	202,249	1973.2
Wks Compensated:	286,178	1,220,992	27	843,002	1983.1	163,877	1973.4
Exhaustions:	7,314	27,395	27	23,814	1983.1	3,671	1973.4
Exhaustion Rate:		26.2%	43	35.6%	1983.3	17.4%	1990.3
Average Duration:		11.4	49	14.2	1983.2	9.2	1995.4
AWBA:	\$188.00	\$185.39	51	\$188.00	2007.2	\$40.78	1971.2
As % of AWW:	27.6		49				
Avg. Benefits per First Payment:		\$2,084					

Financial Information	Past 12 Months	Rank
State Revenues (000):	\$231,431	31
Total Wages (000)**:	\$17,797,780	24
Total Wages (Taxable Employers)(000)**:	\$14,639,343	24
Taxable Wages (000)**:	\$1,445,437	30
Avg. Weekly Wage**:	\$681.85	34
Avg. Tax Rate on Taxable Wages (%) **:	1.57	40
Avg. Tax Rate on Total Wages (%) **:	0.41	46
Calendar Yr Taxable Wage Base:	\$8,000	41
Trust Fund (TF) Balance (000):		
(Including Loans):	\$448,033	31
TF as % of Total Wages*:	0.80	35
Interest Earned (000):	\$5,162	31
Avg. High Cost Multiple +:	0.55	32
High Cost Multiple +:	0.35	32

Labor Force	(Quarterly)	Past 12 Mos	Rank
IUR (%):	1.4	1.5	35
TUR (%):	3.2	3.5	44
Total Unemp. (000):	71.6	77.6	31
Insured Unemployed (000) ***			
Regular Programs:	26.1	27.8	28
All Programs:	26.1	27.8	28
Reciency Rates (%) ***			
Regular Programs:	36	36	22
All Programs:	36	36	22
Covered Emp. (000)**:	1,891	1,877	23
Civ. Labor Force (000):	2,208	2,221	23
Subj. Employers (000):	90	89	27

Extended Benefits	(Quarterly)	Past 12 Months
Extended Benefits (000):	\$0	\$0
EB First Payments:	0	0
EB Weeks Claimed:	0	0
EB Exhaustions:	0	0

Loans	Rank
Outstanding Loan Bal (000):	\$0 1
Loan per Cov Employee:	\$0 1
Loan as % of Total Wages*:	0 1

* Based on extrapolated wages for the most recent 12 months.

** Wages and Covered Employment lag the rest of the Data Summary information by six months

*** Regular programs include State UI, UCFE and UCX.

+ Refers to most recent calendar year. Fourth and first quarter issues publish measure based on extrapolated wages. Second and third quarter issues publish measure based on actual wages.

See glossary for data definitions

Note: Blank cells appearing in any section of this report indicates that information is unavailable.

UI Data Summary for **Alaska**

CYQ: 2007.2

Benefits

	(Quarterly)	Past 12 Months	Rank	High Value : Qtr		Low Value : Qtr	
Benefits Paid (000):	\$26,221	\$109,786	41	\$44,533	2004.1	\$1,663	1971.3
Initial Claims:	19,737	88,746	36	30,954	1996.1	6,230	1973.2
First Payments:	8,137	38,944	36	19,617	1977.1	2,132	1971.3
Weeks Claimed:	154,568	645,920	37	244,721	1986.1	39,062	1971.3
Wks Compensated:	136,110	561,566	37	321,508	1977.1	36,386	1971.3
Exhaustions:	4,322	15,233	33	9,445	1986.2	937	1971.3
Exhaustion Rate:		37.3%	17	56.9%	1986.4	20.2%	1976.3
Average Duration:		14.4	23	19.9	1978.1	14.1	2002.2
AWBA:	\$196.66	\$199.48	50	\$201.38	2006.4	\$46.09	1971.3
As % of AWW:	25.2		51				
Avg. Benefits per First Payment:		\$2,819					

Financial Information

	Past 12 Months	Rank
State Revenues (000):	\$160,455	37
Total Wages (000)**:	\$3,018,191	48
Total Wages (Taxable Employers)(000)**:	\$2,335,430	48
Taxable Wages (000)**:	\$804,462	42
Avg. Weekly Wage**:	\$781.93	18
Avg. Tax Rate on Taxable Wages (%) **:	2.95	9
Avg. Tax Rate on Total Wages (%) **:	1.83	1
Calendar Yr Taxable Wage Base:	\$30,100	4
Trust Fund (TF) Balance (000):		
(Including Loans):	\$288,639	36
TF as % of Total Wages*:	3.05	6
Interest Earned (000):	\$3,451	36
Avg. High Cost Multiple +:	0.99	22
High Cost Multiple +:	0.71	17

Labor Force

	(Quarterly)	Past 12 Mos	Rank
IUR (%):	3.6	3.8	1
TUR (%):	6.0	6.3	4
Total Unemp. (000):	20.8	21.9	43
Insured Unemployed (000) ***			
Regular Programs:	10.7	11.1	40
All Programs:	10.7	11.1	40
Reciency Rates (%) ***			
Regular Programs:	51	51	5
All Programs:	51	51	5
Covered Emp. (000)**:	284	291	51
Civ. Labor Force (000):	346	347	50
Subj. Employers (000):	17	17	52

Extended Benefits

	(Quarterly)	Past 12 Months
Extended Benefits (000):	\$0	\$0
EB First Payments:	0	0
EB Weeks Claimed:	0	0
EB Exhaustions:	0	0

Loans

	Rank
Outstanding Loan Bal (000):	\$0 1
Loan per Cov Employee:	\$0 1
Loan as % of Total Wages*:	0 1

* Based on extrapolated wages for the most recent 12 months.

** Wages and Covered Employment lag the rest of the Data Summary information by six months

*** Regular programs include State UI, UCFE and UCX.

+ Refers to most recent calendar year. Fourth and first quarter issues publish measure based on extrapolated wages. Second and third quarter issues publish measure based on actual wages.

See glossary for data definitions

Note: Blank cells appearing in any section of this report indicates that information is unavailable.

UI Data Summary for **Arizona**

CYQ: 2007.2

Benefits

	(Quarterly)	Past 12 Months	Rank	High Value : Qtr		Low Value : Qtr	
Benefits Paid (000):	\$61,580	\$214,760	29	\$100,822	2002.3	\$4,271	1972.2
Initial Claims:	55,537	177,536	23	73,262	2003.2	19,869	1973.2
First Payments:	23,098	75,457	22	34,734	2003.2	6,115	1972.2
Weeks Claimed:	371,726	1,301,171	25	684,378	2003.3	109,406	1972.3
Wks Compensated:	312,607	1,092,571	26	586,784	2002.3	82,840	1972.3
Exhaustions:	7,508	27,743	25	17,598	2003.3	1,807	1978.4
Exhaustion Rate:		40.6%	9	50.4%	1975.4	22.0%	1980.1
Average Duration:		14.5	21	18.4	1983.3	10.7	1980.1
AWBA:	\$199.12	\$199.09	49	\$202.28	2007.1	\$45.53	1971.2
As % of AWW:	26.1		50				
Avg. Benefits per First Payment:		\$2,846					

Financial Information

	Past 12 Months	Rank
State Revenues (000):	\$318,572	27
Total Wages (000)**:	\$27,201,803	18
Total Wages (Taxable Employers)(000)**:	\$22,901,652	17
Taxable Wages (000)**:	\$2,254,915	23
Avg. Weekly Wage**:	\$762.20	22
Avg. Tax Rate on Taxable Wages (%) **:	1.48	43
Avg. Tax Rate on Total Wages (%) **:	0.34	49
Calendar Yr Taxable Wage Base:	\$7,000	49
Trust Fund (TF) Balance (000):		
(Including Loans):	\$1,013,705	12
TF as % of Total Wages*:	1.15	26
Interest Earned (000):	\$11,841	12
Avg. High Cost Multiple +:	1.07	16
High Cost Multiple +:	0.43	28

Labor Force

	(Quarterly)	Past 12 Mos	Rank
IUR (%):	1.2	1.1	42
TUR (%):	3.6	4.0	38
Total Unemp. (000):	107.4	119.1	24
Insured Unemployed (000) ***			
Regular Programs:	30.6	27.2	25
All Programs:	30.6	27.2	25
Reciency Rates (%) ***			
Regular Programs:	28	23	35
All Programs:	28	23	35
Covered Emp. (000)**:	2,620	2,563	20
Civ. Labor Force (000):	3,018	3,011	19
Subj. Employers (000):	132	130	19

Extended Benefits

	(Quarterly)	Past 12 Months
Extended Benefits (000):	\$0	\$0
EB First Payments:	0	0
EB Weeks Claimed:	0	0
EB Exhaustions:	0	0

Loans

		Rank
Outstanding Loan Bal (000):	\$0	1
Loan per Cov Employee:	\$0	1
Loan as % of Total Wages*:	0	1

* Based on extrapolated wages for the most recent 12 months.

** Wages and Covered Employment lag the rest of the Data Summary information by six months

*** Regular programs include State UI, UCFE and UCX.

+ Refers to most recent calendar year. Fourth and first quarter issues publish measure based on extrapolated wages. Second and third quarter issues publish measure based on actual wages.

See glossary for data definitions

Note: Blank cells appearing in any section of this report indicates that information is unavailable.

UI Data Summary for Arkansas

CYQ: 2007.2

Benefits	(Quarterly)	Past 12 Months	Rank	High Value : Qtr		Low Value : Qtr	
Benefits Paid (000):	\$68,993	\$281,613	28	\$93,583	2002.1	\$3,532	1972.3
Initial Claims:	43,383	205,723	27	103,999	1981.4	20,162	1972.2
First Payments:	17,131	80,648	28	52,817	1975.1	7,104	1973.2
Weeks Claimed:	359,585	1,504,631	27	724,967	1975.1	116,813	1973.3
Wks Compensated:	281,764	1,176,366	28	557,933	1975.1	82,739	1973.3
Exhaustions:	7,341	28,717	26	13,071	1975.2	1,808	1973.4
Exhaustion Rate:		35.7%	21	40.9%	2003.2	21.6%	1986.2
Average Duration:		14.6	20	16.1	1976.1	9.8	1974.4
AWBA:	\$255.63	\$252.67	35	\$256.03	2007.1	\$39.54	1971.1
As % of AWW:	41.6		11				
Avg. Benefits per First Payment:		\$3,492					

Financial Information	Past 12 Months	Rank
State Revenues (000):	\$264,748	30
Total Wages (000)**:	\$9,685,672	34
Total Wages (Taxable Employers)(000)**:	\$7,893,566	34
Taxable Wages (000)**:	\$1,076,102	37
Avg. Weekly Wage**:	\$614.25	47
Avg. Tax Rate on Taxable Wages (%) **:	2.49	18
Avg. Tax Rate on Total Wages (%) **:	0.86	14
Calendar Yr Taxable Wage Base:	\$10,000	26
Trust Fund (TF) Balance (000):		
(Including Loans):	\$188,088	45
TF as % of Total Wages*:	0.63	40
Interest Earned (000):	\$2,021	48
Avg. High Cost Multiple +:	0.38	40
High Cost Multiple +:	0.21	44

Labor Force	(Quarterly)	Past 12 Mos	Rank
IUR (%):	2.4	2.6	11
TUR (%):	5.1	5.2	10
Total Unemp. (000):	70.0	70.6	32
Insured Unemployed (000) ***			
Regular Programs:	28.3	29.7	27
All Programs:	28.3	29.7	27
Reciency Rates (%) ***			
Regular Programs:	40	42	15
All Programs:	40	42	15
Covered Emp. (000)**:	1,157	1,147	34
Civ. Labor Force (000):	1,384	1,371	33
Subj. Employers (000):	67	66	34

Extended Benefits	(Quarterly)	Past 12 Months
Extended Benefits (000):	\$0	\$0
EB First Payments:	0	0
EB Weeks Claimed:	0	0
EB Exhaustions:	0	0

Loans	Rank
Outstanding Loan Bal (000):	\$0 1
Loan per Cov Employee:	\$0 1
Loan as % of Total Wages*:	0 1

* Based on extrapolated wages for the most recent 12 months.

** Wages and Covered Employment lag the rest of the Data Summary information by six months

*** Regular programs include State UI, UCFE and UCX.

+ Refers to most recent calendar year. Fourth and first quarter issues publish measure based on extrapolated wages. Second and third quarter issues publish measure based on actual wages.

See glossary for data definitions

Note: Blank cells appearing in any section of this report indicates that information is unavailable.

UI Data Summary for California

CYQ: 2007.2

Benefits	(Quarterly)	Past 12 Months	Rank	High Value : Qtr		Low Value : Qtr	
				Value	Year	Value	Year
Benefits Paid (000):	\$1,200,477	\$4,565,819	1	\$1,580,309	2003.2	\$125,689	1973.3
Initial Claims:	559,843	2,221,153	1	1,073,146	1992.1	404,986	1973.2
First Payments:	234,250	963,217	1	469,351	1975.1	152,420	1973.2
Weeks Claimed:	4,834,458	18,641,375	1	8,150,226	1992.1	2,522,143	1973.3
Wks Compensated:	4,200,884	16,122,472	1	7,410,743	1992.1	2,184,142	1973.3
Exhaustions:	112,566	408,582	1	184,303	2002.3	48,106	1973.4
Exhaustion Rate:		43.1%	6	50.1%	2003.2	23.7%	1979.2
Average Duration:		16.7	8	18.7	1983.4	12.4	1979.1
AWBA:	\$296.41	\$293.37	14	\$296.41	2007.2	\$53.87	1971.3
As % of AWW:	32.0		40				
Avg. Benefits per First Payment:		\$4,740					

Financial Information	Past 12 Months	Rank
State Revenues (000):	\$5,147,946	1
Total Wages (000)**:	\$197,284,938	1
Total Wages (Taxable Employers)(000)**:	\$162,337,159	1
Taxable Wages (000)**:	\$11,787,431	1
Avg. Weekly Wage**:	\$925.55	6
Avg. Tax Rate on Taxable Wages (%) **:	4.41	4
Avg. Tax Rate on Total Wages (%) **:	0.81	19
Calendar Yr Taxable Wage Base:	\$7,000	49
Trust Fund (TF) Balance (000):		
(Including Loans):	\$3,418,233	2
TF as % of Total Wages*:	0.56	43
Interest Earned (000):	\$36,802	2
Avg. High Cost Multiple +:	0.27	45
High Cost Multiple +:	0.18	46

Labor Force	(Quarterly)	Past 12 Mos	Rank
IUR (%):	2.4	2.3	10
TUR (%):	5.0	4.9	11
Total Unemp. (000):	911.8	887.9	1
Insured Unemployed (000) ***			
Regular Programs:	369.8	356.0	1
All Programs:	369.8	356.0	1
Reciency Rates (%) ***			
Regular Programs:	41	40	14
All Programs:	41	40	14
Covered Emp. (000)**:	15,424	15,259	1
Civ. Labor Force (000):	18,123	18,044	1
Subj. Employers (000):	1,188	1,159	1

Extended Benefits	(Quarterly)	Past 12 Months
Extended Benefits (000):	\$0	\$0
EB First Payments:	0	0
EB Weeks Claimed:	0	0
EB Exhaustions:	0	0

Loans	Rank
Outstanding Loan Bal (000):	\$0 1
Loan per Cov Employee:	\$0 1
Loan as % of Total Wages*:	0 1

* Based on extrapolated wages for the most recent 12 months.

** Wages and Covered Employment lag the rest of the Data Summary information by six months

*** Regular programs include State UI, UCFE and UCX.

+ Refers to most recent calendar year. Fourth and first quarter issues publish measure based on extrapolated wages. Second and third quarter issues publish measure based on actual wages.

See glossary for data definitions

Note: Blank cells appearing in any section of this report indicates that information is unavailable.

UI Data Summary for Colorado

CYQ: 2007.2

Benefits	(Quarterly)	Past 12 Months	Rank	High Value : Qtr		Low Value : Qtr	
Benefits Paid (000):	\$72,621	\$295,152	26	\$153,005	2002.1	\$2,261	1972.3
Initial Claims:	26,784	116,530	35	68,252	1983.1	11,717	1972.3
First Payments:	15,599	69,733	30	37,139	1983.1	3,945	1972.3
Weeks Claimed:	285,722	1,186,358	30	671,262	1983.1	66,570	1972.3
Wks Compensated:	227,084	932,685	31	525,948	1983.1	37,409	1972.3
Exhaustions:	7,174	28,536	28	17,442	2002.2	828	1972.4
Exhaustion Rate:		41.2%	7	62.4%	1976.1	24.4%	1978.4
Average Duration:		13.4	38	16.7	1975.3	9.7	1974.1
AWBA:	\$323.90	\$320.70	8	\$323.90	2007.1	\$58.64	1971.3
As % of AWW:	39.1		21				
Avg. Benefits per First Payment:		\$4,233					

Financial Information	Past 12 Months	Rank
State Revenues (000):	\$449,449	20
Total Wages (000)**:	\$24,980,715	22
Total Wages (Taxable Employers)(000)**:	\$21,350,610	21
Taxable Wages (000)**:	\$2,561,249	20
Avg. Weekly Wage**:	\$827.84	10
Avg. Tax Rate on Taxable Wages (%) **:	2.13	27
Avg. Tax Rate on Total Wages (%) **:	0.59	35
Calendar Yr Taxable Wage Base:	\$10,000	26
Trust Fund (TF) Balance (000):		
(Including Loans):	\$608,109	25
TF as % of Total Wages*:	0.74	38
Interest Earned (000):	\$6,783	25
Avg. High Cost Multiple +:	0.56	30
High Cost Multiple +:	0.49	25

Labor Force	(Quarterly)	Past 12 Mos	Rank
IUR (%):	1.0	1.1	47
TUR (%):	3.5	4.0	39
Total Unemp. (000):	93.5	105.8	26
Insured Unemployed (000) ***			
Regular Programs:	22.5	23.5	30
All Programs:	22.5	23.5	30
Reciprocity Rates (%) ***			
Regular Programs:	24	22	45
All Programs:	24	22	45
Covered Emp. (000)**:	2,213	2,190	22
Civ. Labor Force (000):	2,663	2,670	22
Subj. Employers (000):	157	156	15

Extended Benefits	(Quarterly)	Past 12 Months
Extended Benefits (000):	\$0	\$0
EB First Payments:	0	0
EB Weeks Claimed:	0	0
EB Exhaustions:	0	0

Loans	Rank
Outstanding Loan Bal (000):	\$0 1
Loan per Cov Employee:	\$0 1
Loan as % of Total Wages*:	0 1

* Based on extrapolated wages for the most recent 12 months.

** Wages and Covered Employment lag the rest of the Data Summary information by six months

*** Regular programs include State UI, UCFE and UCX.

+ Refers to most recent calendar year. Fourth and first quarter issues publish measure based on extrapolated wages. Second and third quarter issues publish measure based on actual wages.

See glossary for data definitions

Note: Blank cells appearing in any section of this report indicates that information is unavailable.

UI Data Summary for **Connecticut**

CYQ: 2007.2

Benefits	(Quarterly)	Past 12 Months	Rank	High Value : Qtr		Low Value : Qtr	
Benefits Paid (000):	\$133,129	\$575,644	17	\$232,930	2003.1	\$23,568	1973.4
Initial Claims:	49,536	212,053	25	158,726	1975.1	33,893	1988.2
First Payments:	22,426	120,206	24	92,026	1975.1	14,892	1987.2
Weeks Claimed:	478,330	2,077,286	21	1,196,204	1975.1	194,676	1987.4
Wks Compensated:	452,477	1,952,980	19	1,157,832	1975.2	191,037	1987.4
Exhaustions:	9,299	38,420	23	26,941	1975.3	2,849	1980.1
Exhaustion Rate:		32.2%	30	40.1%	1993.3	12.3%	1979.2
Average Duration:		16.3	9	18.7	1992.4	10.2	1974.1
AWBA:	\$309.19	\$307.58	10	\$319.20	2007.1	\$61.34	1971.3
As % of AWW:	29.3		46				
Avg. Benefits per First Payment:		\$4,789					

Financial Information	Past 12 Months	Rank
State Revenues (000):	\$549,280	19
Total Wages (000)**:	\$23,975,304	23
Total Wages (Taxable Employers)(000)**:	\$19,562,976	23
Taxable Wages (000)**:	\$2,010,263	22
Avg. Weekly Wage**:	\$1,054.00	3
Avg. Tax Rate on Taxable Wages (%) **:	2.60	15
Avg. Tax Rate on Total Wages (%) **:	0.71	27
Calendar Yr Taxable Wage Base:	\$15,000	17
Trust Fund (TF) Balance (000):		
(Including Loans):	\$635,727	24
TF as % of Total Wages*:	0.85	33
Interest Earned (000):	\$7,054	23
Avg. High Cost Multiple +:	0.57	29
High Cost Multiple +:	0.24	38

Labor Force	(Quarterly)	Past 12 Mos	Rank
IUR (%):	2.2	2.4	13
TUR (%):	4.3	4.3	26
Total Unemp. (000):	81.4	80.0	29
Insured Unemployed (000) ***			
Regular Programs:	36.0	39.1	22
All Programs:	36.0	39.1	22
Reciency Rates (%) ***			
Regular Programs:	44	49	10
All Programs:	44	49	10
Covered Emp. (000)**:	1,676	1,653	28
Civ. Labor Force (000):	1,875	1,860	28
Subj. Employers (000):	99	99	26

Extended Benefits	(Quarterly)	Past 12 Months
Extended Benefits (000):	\$0	\$0
EB First Payments:	0	0
EB Weeks Claimed:	0	0
EB Exhaustions:	0	0

Loans	Rank
Outstanding Loan Bal (000):	\$0 1
Loan per Cov Employee:	\$0 1
Loan as % of Total Wages*:	0 1

* Based on extrapolated wages for the most recent 12 months.

** Wages and Covered Employment lag the rest of the Data Summary information by six months

*** Regular programs include State UI, UCFE and UCX.

+ Refers to most recent calendar year. Fourth and first quarter issues publish measure based on extrapolated wages. Second and third quarter issues publish measure based on actual wages.

See glossary for data definitions

Note: Blank cells appearing in any section of this report indicates that information is unavailable.

UI Data Summary for Delaware

CYQ: 2007.2

Benefits	(Quarterly)	Past 12 Months	Rank	<u>High Value : Qtr</u>		<u>Low Value : Qtr</u>	
Benefits Paid (000):	\$23,682	\$104,247	43	\$37,777	2003.1	\$1,884	1972.4
Initial Claims:	12,352	71,464	45	27,988	1974.4	6,192	1973.2
First Payments:	4,145	23,432	47	17,084	1975.1	2,130	1987.2
Weeks Claimed:	99,174	450,290	43	217,510	1975.1	27,787	1987.4
Wks Compensated:	91,972	407,330	42	225,281	1975.1	26,548	1987.4
Exhaustions:	2,034	7,380	44	5,341	1975.2	256	1988.2
Exhaustion Rate:		32.7%	28	44.8%	1976.1	10.5%	1989.3
Average Duration:		17.4	6	19.1	1976.1	9.7	1986.1
AWBA:	\$257.61	\$255.62	34	\$258.02	2007.1	\$50.54	1971.4
As % of AWW:	29.0		47				
Avg. Benefits per First Payment:		\$4,449					

Financial Information	Past 12 Months	Rank
State Revenues (000):	\$85,131	47
Total Wages (000)**:	\$4,888,020	45
Total Wages (Taxable Employers)(000)**:	\$3,997,051	44
Taxable Wages (000)**:	\$316,656	50
Avg. Weekly Wage**:	\$888.58	7
Avg. Tax Rate on Taxable Wages (%) **:	2.44	19
Avg. Tax Rate on Total Wages (%) **:	0.52	39
Calendar Yr Taxable Wage Base:	\$8,500	34
Trust Fund (TF) Balance (000):		
(Including Loans):	\$190,920	44
TF as % of Total Wages*:	1.23	24
Interest Earned (000):	\$2,241	44
Avg. High Cost Multiple +:	1.02	20
High Cost Multiple +:	0.48	26

Labor Force	(Quarterly)	Past 12 Mos	Rank
IUR (%):	1.8	2.0	21
TUR (%):	3.4	3.5	42
Total Unemp. (000):	15.0	15.4	47
Insured Unemployed (000) ***			
Regular Programs:	7.6	8.5	43
All Programs:	7.6	8.5	43
Reciency Rates (%) ***			
Regular Programs:	51	55	6
All Programs:	51	55	6
Covered Emp. (000)**:	420	417	46
Civ. Labor Force (000):	444	443	46
Subj. Employers (000):	27	27	47

Extended Benefits	(Quarterly)	Past 12 Months
Extended Benefits (000):	\$0	\$0
EB First Payments:	0	0
EB Weeks Claimed:	0	0
EB Exhaustions:	0	0

Loans	Rank
Outstanding Loan Bal (000):	1
Loan per Cov Employee:	1
Loan as % of Total Wages*:	1

* Based on extrapolated wages for the most recent 12 months.

** Wages and Covered Employment lag the rest of the Data Summary information by six months

*** Regular programs include State UI, UCFE and UCX.

+ Refers to most recent calendar year. Fourth and first quarter issues publish measure based on extrapolated wages. Second and third quarter issues publish measure based on actual wages.

See glossary for data definitions

Note: Blank cells appearing in any section of this report indicates that information is unavailable.

UI Data Summary for District of Columbia

CYQ: 2007.2

Benefits	(Quarterly)	Past 12 Months	Rank	High Value : Qtr		Low Value : Qtr	
<u>Benefits Paid (000):</u>	\$20,460	\$87,245	45	\$39,715	2002.1	\$4,732	1971.4
<u>Initial Claims:</u>	7,097	27,801	49	15,303	1975.2	3,624	2005.4
<u>First Payments:</u>	3,828	16,608	48	11,131	1975.3	2,779	2003.2
<u>Weeks Claimed:</u>	84,803	360,862	48	205,018	1975.3	48,862	2006.2
<u>Wks Compensated:</u>	73,156	315,698	46	201,986	1975.3	66,758	2000.4
<u>Exhaustions:</u>	2,150	8,679	43	5,220	1991.3	1,310	1971.1
<u>Exhaustion Rate:</u>		53.6%	1	93.7%	2003.2	37.4%	1979.2
<u>Average Duration:</u>		19.0	1	32.6	2003.2	15.7	2001.4
<u>AWBA:</u>	\$286.35	\$283.52	21	\$314.28	2002.1	\$57.77	1971.1
As % of AWW:	22.9		53				
<u>Avg. Benefits per First Payment:</u>		\$5,253					

Financial Information	Past 12 Months	Rank
<u>State Revenues (000):</u>	\$109,586	44
<u>Total Wages (000)**:</u>	\$8,332,995	36
<u>Total Wages (Taxable Employers)(000)**:</u>	\$6,881,783	36
<u>Taxable Wages (000)**:</u>	\$392,931	47
<u>Avg. Weekly Wage**:</u>	\$1,248.73	1
<u>Avg. Tax Rate on Taxable Wages (%) **:</u>	2.05	28
<u>Avg. Tax Rate on Total Wages (%) **:</u>	0.34	50
<u>Calendar Yr Taxable Wage Base:</u>	\$9,000	29
<u>Trust Fund (TF) Balance (000):</u>		
(Including Loans):	\$412,231	33
<u>TF as % of Total Wages*:</u>	1.58	18
<u>Interest Earned (000):</u>	\$4,787	32
<u>Avg. High Cost Multiple +:</u>	1.12	15
<u>High Cost Multiple +:</u>	0.81	12

Labor Force	(Quarterly)	Past 12 Mos	Rank
<u>IUR (%):</u>	0.8	0.9	34
<u>TUR (%):</u>	5.5	5.9	6
<u>Total Unemp. (000):</u>	17.5	18.7	45
<u>Insured Unemployed (000) ***</u>			
<u>Regular Programs:</u>	4.4	4.6	49
<u>All Programs:</u>	4.4	4.6	49
<u>Reciency Rates (%) ***</u>			
<u>Regular Programs:</u>	25	24	44
<u>All Programs:</u>	25	24	44
<u>Covered Emp. (000)**:</u>	483	478	44
<u>Civ. Labor Force (000):</u>	319	319	51
<u>Subj. Employers (000):</u>	29	29	46

Extended Benefits	(Quarterly)	Past 12 Months
<u>Extended Benefits (000):</u>	\$0	\$0
EB First Payments:	0	0
EB Weeks Claimed:	0	0
EB Exhaustions:	0	0

Loans	Rank
<u>Outstanding Loan Bal (000):</u>	\$0 1
Loan per Cov Employee:	\$0 1
Loan as % of Total Wages*:	0 1

* Based on extrapolated wages for the most recent 12 months.

** Wages and Covered Employment lag the rest of the Data Summary information by six months

*** Regular programs include State UI, UCFE and UCX.

+ Refers to most recent calendar year. Fourth and first quarter issues publish measure based on extrapolated wages. Second and third quarter issues publish measure based on actual wages.

See glossary for data definitions

Note: Blank cells appearing in any section of this report indicates that information is unavailable.

UI Data Summary for Florida

CYQ: 2007.2

Benefits	(Quarterly)	Past 12 Months	Rank	High Value : Qtr		Low Value : Qtr	
<u>Benefits Paid (000):</u>	\$245,984	\$913,606	10	\$327,891	2002.3	\$7,873	1973.2
<u>Initial Claims:</u>	155,060	535,357	5	192,201	2004.3	47,634	1972.4
<u>First Payments:</u>	77,920	279,786	4	106,053	2001.4	13,559	1973.1
<u>Weeks Claimed:</u>	1,261,213	4,709,205	7	2,038,601	1993.3	290,942	1973.2
<u>Wks Compensated:</u>	1,044,416	3,938,868	7	1,514,491	1992.3	161,460	1973.1
<u>Exhaustions:</u>	28,914	110,649	7	53,422	1975.3	5,076	1973.2
<u>Exhaustion Rate:</u>		46.1%	2	62.4%	1975.2	33.8%	1984.3
<u>Average Duration:</u>		14.1	27	16.4	1993.1	10.5	1974.1
<u>AWBA:</u>	\$238.02	\$234.58	40	\$238.02	2007.2	\$38.12	1971.1
As % of AWW:	32.5		38				
<u>Avg. Benefits per First Payment:</u>		\$3,265					

Financial Information		Past 12 Months	Rank
<u>State Revenues (000):</u>		\$1,006,423	11
<u>Total Wages (000)**:</u>	\$80,474,219	\$298,346,003	4
<u>Total Wages (Taxable Employers)(000)**:</u>	\$67,650,990	\$249,901,370	4
<u>Taxable Wages (000)**:</u>	\$6,569,394	\$58,976,549	5
<u>Avg. Weekly Wage**:</u>		\$733.41	24
<u>Avg. Tax Rate on Taxable Wages (%) **:</u>		1.92	31
<u>Avg. Tax Rate on Total Wages (%) **:</u>		0.45	44
<u>Calendar Yr Taxable Wage Base:</u>		\$7,000	49
<u>Trust Fund (TF) Balance (000):</u>			
(Including Loans):	\$2,504,742		3
<u>TF as % of Total Wages*:</u>	0.98		31
<u>Interest Earned (000):</u>	\$29,576		3
<u>Avg. High Cost Multiple +:</u>	1.12		14
<u>High Cost Multiple +:</u>	0.49		24

Labor Force	(Quarterly)	Past 12 Mos	Rank
<u>IUR (%):</u>	1.3	1.2	40
<u>TUR (%):</u>	3.4	3.3	43
<u>Total Unemp. (000):</u>	309.2	304.5	7
Insured Unemployed (000) ***			
<u>Regular Programs:</u>	99.9	93.9	7
<u>All Programs:</u>	99.9	93.9	7
Reciency Rates (%) ***			
<u>Regular Programs:</u>	32	31	28
<u>All Programs:</u>	32	31	28
<u>Covered Emp. (000)**:</u>	7,919	7,823	4
<u>Civ. Labor Force (000):</u>	9,183	9,117	4
<u>Subj. Employers (000):</u>	498	492	2

Extended Benefits	(Quarterly)	Past 12 Months	
<u>Extended Benefits (000):</u>	\$0	\$0	
EB First Payments:	0	0	
EB Weeks Claimed:	0	0	
EB Exhaustions:	0	0	

Loans		Rank
<u>Outstanding Loan Bal (000):</u>	\$0	1
Loan per Cov Employee:	\$0	1
Loan as % of Total Wages*:	0	1

* Based on extrapolated wages for the most recent 12 months.

** Wages and Covered Employment lag the rest of the Data Summary information by six months

*** Regular programs include State UI, UCFE and UCX.

+ Refers to most recent calendar year. Fourth and first quarter issues publish measure based on extrapolated wages. Second and third quarter issues publish measure based on actual wages.

See glossary for data definitions

Note: Blank cells appearing in any section of this report indicates that information is unavailable.

UI Data Summary for Georgia

CYQ: 2007.2

Benefits	(Quarterly)	Past 12 Months	Rank	High Value : Qtr		Low Value : Qtr	
Benefits Paid (000):	\$137,739	\$566,480	16	\$218,168	2002.1	\$6,287	1972.4
Initial Claims:	100,827	457,611	12	293,875	1982.1	24,591	1973.2
First Payments:	44,156	201,481	12	157,459	1975.1	9,055	1973.2
Weeks Claimed:	636,922	2,659,319	15	1,526,729	1975.1	182,945	1972.4
Wks Compensated:	534,390	2,242,443	15	1,376,688	1975.1	137,491	1972.4
Exhaustions:	16,708	73,056	14	47,966	1975.2	4,870	1972.4
Exhaustion Rate:		36.9%	20	54.9%	1975.2	19.6%	1990.3
Average Duration:		11.1	53	14.1	1976.1	8.2	1986.2
AWBA:	\$263.89	\$259.99	31	\$263.89	2007.2	\$43.29	1971.1
As % of AWW:	34.4		36				
Avg. Benefits per First Payment:		\$2,812					

Financial Information	Past 12 Months	Rank
State Revenues (000):	\$577,176	16
Total Wages (000)**:	\$41,613,331	11
Total Wages (Taxable Employers)(000)**:	\$35,276,750	11
Taxable Wages (000)**:	\$3,664,283	14
Avg. Weekly Wage**:	\$766.67	20
Avg. Tax Rate on Taxable Wages (%) **:	1.86	32
Avg. Tax Rate on Total Wages (%) **:	0.46	43
Calendar Yr Taxable Wage Base:	\$8,500	34
Trust Fund (TF) Balance (000):		
(Including Loans):	\$1,382,813	9
TF as % of Total Wages*:	1.03	28
Interest Earned (000):	\$15,834	9
Avg. High Cost Multiple +:	1.02	18
High Cost Multiple +:	0.45	27

Labor Force	(Quarterly)	Past 12 Mos	Rank
IUR (%):	1.3	1.4	39
TUR (%):	4.3	4.5	28
Total Unemp. (000):	208.2	214.9	10
Insured Unemployed (000) ***			
Regular Programs:	51.9	54.8	13
All Programs:	51.9	54.8	13
Reciency Rates (%) ***			
Regular Programs:	25	26	43
All Programs:	25	26	43
Covered Emp. (000)**:	3,988	3,931	9
Civ. Labor Force (000):	4,826	4,803	9
Subj. Employers (000):	214	213	10

Extended Benefits	(Quarterly)	Past 12 Months
Extended Benefits (000):	\$0	\$0
EB First Payments:	0	0
EB Weeks Claimed:	0	0
EB Exhaustions:	0	0

Loans	Rank
Outstanding Loan Bal (000):	\$0 1
Loan per Cov Employee:	\$0 1
Loan as % of Total Wages*:	0 1

* Based on extrapolated wages for the most recent 12 months.

** Wages and Covered Employment lag the rest of the Data Summary information by six months

*** Regular programs include State UI, UCFE and UCX.

+ Refers to most recent calendar year. Fourth and first quarter issues publish measure based on extrapolated wages. Second and third quarter issues publish measure based on actual wages.

See glossary for data definitions

Note: Blank cells appearing in any section of this report indicates that information is unavailable.

UI Data Summary for Hawaii

CYQ: 2007.2

Benefits	(Quarterly)	Past 12 Months	Rank	High Value : Qtr		Low Value : Qtr	
Benefits Paid (000):	\$26,777	\$103,244	40	\$53,765	2001.4	\$6,426	1972.3
Initial Claims:	13,682	54,925	42	35,479	2001.4	10,200	1990.3
First Payments:	5,449	21,069	43	18,185	2001.4	4,105	1989.4
Weeks Claimed:	86,210	336,899	46	241,177	1976.1	57,623	1989.4
Wks Compensated:	73,051	285,501	47	224,118	1976.1	51,372	1989.4
Exhaustions:	1,113	4,625	50	5,073	1976.3	728	1989.4
Exhaustion Rate:		21.7%	48	43.7%	1976.4	16.3%	1990.1
Average Duration:		13.6	31	19.2	2002.4	11.1	1991.1
AWBA:	\$377.87	\$373.71	2	\$379.84	2007.1	\$63.43	1971.1
As % of AWW:	53.5		1				
Avg. Benefits per First Payment:		\$4,900					

Financial Information	Past 12 Months	Rank
State Revenues (000):	\$137,606	41
Total Wages (000)**:	\$5,707,405	42
Total Wages (Taxable Employers)(000)**:	\$4,439,790	42
Taxable Wages (000)**:	\$1,964,116	34
Avg. Weekly Wage**:	\$705.96	29
Avg. Tax Rate on Taxable Wages (%) **:	1.26	49
Avg. Tax Rate on Total Wages (%) **:	0.86	12
Calendar Yr Taxable Wage Base:	\$35,300	1
Trust Fund (TF) Balance (000):		
(Including Loans):	\$545,564	28
TF as % of Total Wages*:	3.23	4
Interest Earned (000):	\$6,598	27
Avg. High Cost Multiple +:	1.90	2
High Cost Multiple +:	1.51	2

Labor Force	(Quarterly)	Past 12 Mos	Rank
IUR (%):	1.1	1.1	41
TUR (%):	2.6	2.3	49
Total Unemp. (000):	17.0	14.9	46
Insured Unemployed (000) ***			
Regular Programs:	6.7	6.6	47
All Programs:	6.7	6.6	47
Reciency Rates (%) ***			
Regular Programs:	39	44	16
All Programs:	39	44	16
Covered Emp. (000)**:	594	586	42
Civ. Labor Force (000):	654	649	43
Subj. Employers (000):	31	31	45

Extended Benefits	(Quarterly)	Past 12 Months
Extended Benefits (000):	\$0	\$0
EB First Payments:	0	0
EB Weeks Claimed:	0	0
EB Exhaustions:	0	0

Loans	Rank
Outstanding Loan Bal (000):	\$0 1
Loan per Cov Employee:	\$0 1
Loan as % of Total Wages*:	0 1

* Based on extrapolated wages for the most recent 12 months.

** Wages and Covered Employment lag the rest of the Data Summary information by six months

*** Regular programs include State UI, UCFE and UCX.

+ Refers to most recent calendar year. Fourth and first quarter issues publish measure based on extrapolated wages. Second and third quarter issues publish measure based on actual wages.

See glossary for data definitions

Note: Blank cells appearing in any section of this report indicates that information is unavailable.

UI Data Summary for Idaho

CYQ: 2007.2

Benefits	(Quarterly)	Past 12 Months	Rank	High Value : Qtr		Low Value : Qtr	
Benefits Paid (000):	\$24,795	\$109,774	42	\$69,429	2002.1	\$1,990	1972.4
Initial Claims:	16,317	87,385	38	47,070	2001.4	8,753	1972.3
First Payments:	7,266	41,739	40	23,010	2003.1	3,784	1971.2
Weeks Claimed:	118,737	547,646	41	353,845	2003.1	63,956	1972.4
Wks Compensated:	103,909	469,583	41	313,570	2002.1	40,048	1972.4
Exhaustions:	3,074	10,091	41	9,096	1983.1	920	1972.4
Exhaustion Rate:		25.4%	45	52.6%	1983.2	22.0%	1979.3
Average Duration:		11.3	50	15.3	1982.4	10.1	1978.4
AWBA:	\$252.86	\$247.46	37	\$252.86	2007.2	\$45.31	1971.3
As % of AWW:	40.9		15				
Avg. Benefits per First Payment:		\$2,630					

Financial Information	Past 12 Months	Rank
State Revenues (000):	\$138,487	40
Total Wages (000)**:	\$5,526,096	43
Total Wages (Taxable Employers)(000)**:	\$4,566,137	40
Taxable Wages (000)**:	\$1,864,907	35
Avg. Weekly Wage**:	\$617.58	46
Avg. Tax Rate on Taxable Wages (%) **:	1.51	41
Avg. Tax Rate on Total Wages (%) **:	0.99	10
Calendar Yr Taxable Wage Base:	\$30,200	3
Trust Fund (TF) Balance (000):		
(Including Loans):	\$174,426	48
TF as % of Total Wages*:	1.00	29
Interest Earned (000):	\$2,088	46
Avg. High Cost Multiple +:	0.45	36
High Cost Multiple +:	0.34	34

Labor Force	(Quarterly)	Past 12 Mos	Rank
IUR (%):	1.5	1.8	31
TUR (%):	2.3	3.0	51
Total Unemp. (000):	17.7	22.7	44
Insured Unemployed (000) ***			
Regular Programs:	9.8	11.4	41
All Programs:	9.8	11.4	41
Reciency Rates (%) ***			
Regular Programs:	55	50	4
All Programs:	55	50	4
Covered Emp. (000)**:	640	631	40
Civ. Labor Force (000):	756	753	40
Subj. Employers (000):	51	50	37

Extended Benefits	(Quarterly)	Past 12 Months
Extended Benefits (000):	\$0	\$0
EB First Payments:	0	0
EB Weeks Claimed:	0	0
EB Exhaustions:	0	0

Loans	Rank
Outstanding Loan Bal (000):	\$0 1
Loan per Cov Employee:	\$0 1
Loan as % of Total Wages*:	0 1

* Based on extrapolated wages for the most recent 12 months.

** Wages and Covered Employment lag the rest of the Data Summary information by six months

*** Regular programs include State UI, UCFE and UCX.

+ Refers to most recent calendar year. Fourth and first quarter issues publish measure based on extrapolated wages. Second and third quarter issues publish measure based on actual wages.

See glossary for data definitions

Note: Blank cells appearing in any section of this report indicates that information is unavailable.

UI Data Summary for **Illinois**

CYQ: 2007.2

Benefits	(Quarterly)	Past 12 Months	Rank	High Value : Qtr		Low Value : Qtr	
Benefits Paid (000):	\$435,501	\$1,789,977	6	\$759,769	2002.1	\$33,425	1973.3
Initial Claims:	151,530	701,784	7	366,762	1982.1	111,476	1973.2
First Payments:	68,569	344,207	7	210,346	1975.1	45,457	1973.4
Weeks Claimed:	1,610,259	6,734,036	5	3,764,106	1983.1	714,895	1973.4
Wks Compensated:	1,438,423	5,958,827	5	3,334,960	1983.1	563,654	1973.4
Exhaustions:	30,612	119,025	6	83,792	1982.4	12,720	1972.4
Exhaustion Rate:		35.6%	22	53.3%	1983.3	26.9%	2000.4
Average Duration:		17.3	7	21.6	1983.4	11.7	1975.1
AWBA:	\$303.98	\$301.63	11	\$319.25	2007.1	\$51.05	1971.3
As % of AWW:	34.8		35				
Avg. Benefits per First Payment:		\$5,200					

Financial Information	Past 12 Months	Rank
State Revenues (000):	\$2,369,718	3
Total Wages (000)**:	\$69,737,929	5
Total Wages (Taxable Employers)(000)**:	\$58,004,485	5
Taxable Wages (000)**:	\$5,335,828	6
Avg. Weekly Wage**:	\$873.24	8
Avg. Tax Rate on Taxable Wages (%) **:	4.44	3
Avg. Tax Rate on Total Wages (%) **:	1.14	7
Calendar Yr Taxable Wage Base:	\$11,500	22
Trust Fund (TF) Balance (000):		
(Including Loans):	\$1,747,259	7
TF as % of Total Wages*:	0.80	36
Interest Earned (000):	\$17,880	7
Avg. High Cost Multiple +:	0.26	46
High Cost Multiple +:	0.23	42

Labor Force	(Quarterly)	Past 12 Mos	Rank
IUR (%):	2.1	2.2	14
TUR (%):	4.9	4.5	13
Total Unemp. (000):	328.1	301.0	6
Insured Unemployed (000) ***			
Regular Programs:	122.9	128.5	5
All Programs:	122.9	128.5	5
Reciency Rates (%) ***			
Regular Programs:	37	43	21
All Programs:	37	43	21
Covered Emp. (000)**:	5,805	5,734	5
Civ. Labor Force (000):	6,700	6,673	5
Subj. Employers (000):	297	295	5

Extended Benefits	(Quarterly)	Past 12 Months
Extended Benefits (000):	\$0	\$0
EB First Payments:	0	0
EB Weeks Claimed:	0	0
EB Exhaustions:	0	0

Loans	Rank
Outstanding Loan Bal (000):	\$0 1
Loan per Cov Employee:	\$0 1
Loan as % of Total Wages*:	0 1

* Based on extrapolated wages for the most recent 12 months.

** Wages and Covered Employment lag the rest of the Data Summary information by six months

*** Regular programs include State UI, UCFE and UCX.

+ Refers to most recent calendar year. Fourth and first quarter issues publish measure based on extrapolated wages. Second and third quarter issues publish measure based on actual wages.

See glossary for data definitions

Note: Blank cells appearing in any section of this report indicates that information is unavailable.

UI Data Summary for Indiana

CYQ: 2007.2

Benefits	(Quarterly)	Past 12 Months	Rank	High Value : Qtr		Low Value : Qtr	
<u>Benefits Paid (000):</u>	\$160,735	\$701,382	15	\$241,928	2007.1	\$8,800	1973.3
<u>Initial Claims:</u>	80,308	418,964	16	239,452	1975.1	42,913	1994.2
<u>First Payments:</u>	34,134	189,651	14	135,044	1975.1	14,237	1976.3
<u>Weeks Claimed:</u>	657,785	2,868,589	13	1,563,934	1975.1	234,695	1973.3
<u>Wks Compensated:</u>	571,991	2,487,486	14	1,367,828	1975.1	199,188	1973.4
<u>Exhaustions:</u>	21,058	74,234	10	37,884	1975.2	4,727	1988.4
<u>Exhaustion Rate:</u>		39.8%	13	44.0%	2003.4	20.6%	1990.3
<u>Average Duration:</u>		13.1	41	16.0	1983.4	8.6	1974.1
<u>AWBA:</u>	\$288.50	\$289.99	18	\$298.20	2007.1	\$40.32	1971.2
As % of AWW:	41.3		13				
<u>Avg. Benefits per First Payment:</u>		\$3,698					

Financial Information	Past 12 Months	Rank
<u>State Revenues (000):</u>	\$575,297	17
<u>Total Wages (000)**:</u>	\$26,929,923	17
<u>Total Wages (Taxable Employers)(000)**:</u>	\$22,367,117	19
<u>Taxable Wages (000)**:</u>	\$1,789,946	25
<u>Avg. Weekly Wage**:</u>	\$697.93	31
<u>Avg. Tax Rate on Taxable Wages (%) **:</u>	2.93	10
<u>Avg. Tax Rate on Total Wages (%) **:</u>	0.66	34
<u>Calendar Yr Taxable Wage Base:</u>	\$7,000	49
<u>Trust Fund (TF) Balance (000):</u>		
(Including Loans):	\$442,759	32
<u>TF as % of Total Wages*:</u>	0.51	45
<u>Interest Earned (000):</u>	\$4,685	33
<u>Avg. High Cost Multiple +:</u>	0.46	35
<u>High Cost Multiple +:</u>	0.31	36

Labor Force	(Quarterly)	Past 12 Mos	Rank
<u>IUR (%):</u>	1.8	1.9	22
<u>TUR (%):</u>	4.5	4.8	18
<u>Total Unemp. (000):</u>	147.5	158.3	15
Insured Unemployed (000) ***			
<u>Regular Programs:</u>	51.3	56.1	14
<u>All Programs:</u>	51.3	56.1	14
Reciency Rates (%) ***			
<u>Regular Programs:</u>	35	35	24
<u>All Programs:</u>	35	35	24
<u>Covered Emp. (000)**:</u>	2,886	2,856	14
<u>Civ. Labor Force (000):</u>	3,247	3,270	15
<u>Subj. Employers (000):</u>	130	129	21

Extended Benefits	(Quarterly)	Past 12 Months
<u>Extended Benefits (000):</u>	\$0	\$0
EB First Payments:	0	0
EB Weeks Claimed:	0	0
EB Exhaustions:	0	0

Loans	Rank
<u>Outstanding Loan Bal (000):</u>	\$0 1
Loan per Cov Employee:	\$0 1
Loan as % of Total Wages*:	0 1

* Based on extrapolated wages for the most recent 12 months.

** Wages and Covered Employment lag the rest of the Data Summary information by six months

*** Regular programs include State UI, UCFE and UCX.

+ Refers to most recent calendar year. Fourth and first quarter issues publish measure based on extrapolated wages. Second and third quarter issues publish measure based on actual wages.

See glossary for data definitions

Note: Blank cells appearing in any section of this report indicates that information is unavailable.

UI Data Summary for Iowa

CYQ: 2007.2

Benefits

	(Quarterly)	Past 12 Months	Rank	High Value : Qtr		Low Value : Qtr	
Benefits Paid (000):	\$72,485	\$338,769	27	\$136,849	2003.1	\$4,418	1972.4
Initial Claims:	34,292	193,210	31	91,605	1982.1	15,337	1974.2
First Payments:	15,319	96,755	31	63,848	1982.1	6,856	1974.2
Weeks Claimed:	277,311	1,304,253	31	762,074	1983.1	104,815	1974.3
Wks Compensated:	262,710	1,224,071	30	728,215	1983.1	79,526	1973.4
Exhaustions:	6,245	22,758	30	17,724	1983.1	1,761	1973.4
Exhaustion Rate:		24.6%	47	46.5%	1975.3	13.6%	1979.4
Average Duration:		12.7	44	15.8	1983.2	10.6	1999.2
AWBA:	\$288.54	\$289.36	17	\$297.57	2007.1	\$52.22	1971.3
As % of AWW:	44.0		6				
Avg. Benefits per First Payment:		\$3,501					

Financial Information

	Past 12 Months	Rank
State Revenues (000):	\$322,458	26
Total Wages (000)**:	\$13,235,072	30
Total Wages (Taxable Employers)(000)**:	\$10,586,592	32
Taxable Wages (000)**:	\$2,447,498	21
Avg. Weekly Wage**:	\$655.64	40
Avg. Tax Rate on Taxable Wages (%) **:	1.61	39
Avg. Tax Rate on Total Wages (%) **:	0.85	16
Calendar Yr Taxable Wage Base:	\$22,000	11
Trust Fund (TF) Balance (000):		
(Including Loans):	\$665,338	21
TF as % of Total Wages*:	1.67	17
Interest Earned (000):	\$7,814	19
Avg. High Cost Multiple +:	0.87	25
High Cost Multiple +:	0.68	19

Labor Force

	(Quarterly)	Past 12 Mos	Rank
IUR (%):	1.5	1.7	30
TUR (%):	3.4	3.5	40
Total Unemp. (000):	56.7	58.7	35
Insured Unemployed (000) ***			
Regular Programs:	21.6	25.2	31
All Programs:	21.6	25.2	31
Reciency Rates (%) ***			
Regular Programs:	38	43	19
All Programs:	38	43	19
Covered Emp. (000)**:	1,467	1,452	30
Civ. Labor Force (000):	1,660	1,664	30
Subj. Employers (000):	72	71	30

Extended Benefits

	(Quarterly)	Past 12 Months
Extended Benefits (000):	\$0	\$0
EB First Payments:	0	0
EB Weeks Claimed:	0	0
EB Exhaustions:	0	0

Loans

	Rank
Outstanding Loan Bal (000):	1
Loan per Cov Employee:	1
Loan as % of Total Wages*:	1

* Based on extrapolated wages for the most recent 12 months.

** Wages and Covered Employment lag the rest of the Data Summary information by six months

*** Regular programs include State UI, UCFE and UCX.

+ Refers to most recent calendar year. Fourth and first quarter issues publish measure based on extrapolated wages. Second and third quarter issues publish measure based on actual wages.

See glossary for data definitions

Note: Blank cells appearing in any section of this report indicates that information is unavailable.

UI Data Summary for **Kansas**

CYQ: 2007.2

Benefits	(Quarterly)	Past 12 Months	Rank	High Value : Qtr		Low Value : Qtr	
Benefits Paid (000):	\$54,402	\$228,329	30	\$105,996	2003.1	\$3,919	1973.3
Initial Claims:	31,845	136,115	33	58,971	1983.1	12,849	1973.2
First Payments:	13,400	58,807	33	32,068	1982.1	6,024	1973.2
Weeks Claimed:	215,733	920,364	34	507,786	1983.1	94,003	1973.3
Wks Compensated:	183,944	785,658	34	473,467	1982.3	74,015	1973.3
Exhaustions:	4,269	17,511	34	16,294	1983.1	1,499	1973.4
Exhaustion Rate:		32.2%	31	48.1%	1983.3	20.6%	1980.1
Average Duration:		13.4	39	18.4	1983.3	10.7	1974.1
AWBA:	\$300.51	\$295.21	13	\$303.49	2007.1	\$50.55	1971.3
As % of AWW:	44.2		5				
Avg. Benefits per First Payment:		\$3,883					

Financial Information	Past 12 Months	Rank
State Revenues (000):	\$272,843	29
Total Wages (000)**:	\$12,400,273	32
Total Wages (Taxable Employers)(000)**:	\$11,424,054	30
Taxable Wages (000)**:	\$2,287,947	29
Avg. Weekly Wage**:	\$679.54	35
Avg. Tax Rate on Taxable Wages (%) **:	2.28	21
Avg. Tax Rate on Total Wages (%) **:	0.78	20
Calendar Yr Taxable Wage Base:	\$8,000	41
Trust Fund (TF) Balance (000):		
(Including Loans):	\$659,836	22
TF as % of Total Wages*:	1.51	19
Interest Earned (000):	\$7,626	20
Avg. High Cost Multiple +:	0.97	23
High Cost Multiple +:	0.72	16

Labor Force	(Quarterly)	Past 12 Mos	Rank
IUR (%):	1.3	1.4	37
TUR (%):	4.3	4.5	27
Total Unemp. (000):	64.2	65.6	33
Insured Unemployed (000) ***			
Regular Programs:	16.7	17.8	34
All Programs:	16.7	17.8	34
Reciency Rates (%) ***			
Regular Programs:	26	27	41
All Programs:	26	27	41
Covered Emp. (000)**:	1,326	1,302	31
Civ. Labor Force (000):	1,483	1,474	31
Subj. Employers (000):	71	71	31

Extended Benefits	(Quarterly)	Past 12 Months
Extended Benefits (000):	\$0	\$0
EB First Payments:	0	0
EB Weeks Claimed:	0	0
EB Exhaustions:	0	0

Loans	Rank
Outstanding Loan Bal (000):	\$0 1
Loan per Cov Employee:	\$0 1
Loan as % of Total Wages*:	0 1

* Based on extrapolated wages for the most recent 12 months.

** Wages and Covered Employment lag the rest of the Data Summary information by six months

*** Regular programs include State UI, UCFE and UCX.

+ Refers to most recent calendar year. Fourth and first quarter issues publish measure based on extrapolated wages. Second and third quarter issues publish measure based on actual wages.

See glossary for data definitions

Note: Blank cells appearing in any section of this report indicates that information is unavailable.

UI Data Summary for **Kentucky**

CYQ: 2007.2

Benefits	(Quarterly)	Past 12 Months	Rank	High Value : Qtr		Low Value : Qtr	
Benefits Paid (000):	\$95,725	\$414,242	21	\$148,652	2003.1	\$7,436	1972.3
Initial Claims:	58,131	324,543	21	170,954	1994.1	25,015	1973.2
First Payments:	18,544	116,622	27	110,332	1994.1	11,096	1972.2
Weeks Claimed:	362,222	1,581,161	26	1,029,444	1983.1	169,408	1973.3
Wks Compensated:	352,734	1,525,643	23	974,059	1983.1	147,330	1973.3
Exhaustions:	5,991	23,521	31	20,572	1983.1	2,882	1972.4
Exhaustion Rate:		21.1%	49	39.4%	1983.1	12.8%	1995.2
Average Duration:		13.1	43	18.6	1983.4	8.9	1994.1
AWBA:	\$279.79	\$281.52	26	\$289.20	2006.4	\$46.26	1971.2
As % of AWW:	41.8		10				
Avg. Benefits per First Payment:		\$3,552					

Financial Information	Past 12 Months	Rank
State Revenues (000):	\$366,966	24
Total Wages (000)**:	\$16,103,497	28
Total Wages (Taxable Employers)(000)**:	\$12,979,823	28
Taxable Wages (000)**:	\$1,307,033	31
Avg. Weekly Wage**:	\$669.86	37
Avg. Tax Rate on Taxable Wages (%) **:	2.69	13
Avg. Tax Rate on Total Wages (%) **:	0.72	25
Calendar Yr Taxable Wage Base:	\$8,000	41
Trust Fund (TF) Balance (000):		
(Including Loans):	\$284,320	37
TF as % of Total Wages*:	0.58	42
Interest Earned (000):	\$2,938	41
Avg. High Cost Multiple +:	0.26	47
High Cost Multiple +:	0.19	45

Labor Force	(Quarterly)	Past 12 Mos	Rank
IUR (%):	1.6	1.8	28
TUR (%):	5.4	5.5	8
Total Unemp. (000):	111.1	113.5	22
Insured Unemployed (000) ***			
Regular Programs:	29.3	32.0	26
All Programs:	29.3	32.0	26
Reciency Rates (%) ***			
Regular Programs:	26	28	39
All Programs:	26	28	39
Covered Emp. (000)**:	1,767	1,741	26
Civ. Labor Force (000):	2,071	2,056	25
Subj. Employers (000):	86	85	28

Extended Benefits	(Quarterly)	Past 12 Months
Extended Benefits (000):	\$0	\$0
EB First Payments:	0	0
EB Weeks Claimed:	0	0
EB Exhaustions:	0	0

Loans	Rank
Outstanding Loan Bal (000):	\$0 1
Loan per Cov Employee:	\$0 1
Loan as % of Total Wages*:	0 1

* Based on extrapolated wages for the most recent 12 months.

** Wages and Covered Employment lag the rest of the Data Summary information by six months

*** Regular programs include State UI, UCFE and UCX.

+ Refers to most recent calendar year. Fourth and first quarter issues publish measure based on extrapolated wages. Second and third quarter issues publish measure based on actual wages.

See glossary for data definitions

Note: Blank cells appearing in any section of this report indicates that information is unavailable.

UI Data Summary for Louisiana

CYQ: 2007.2

Benefits	(Quarterly)	Past 12 Months	Rank	<u>High Value : Qtr</u>		<u>Low Value : Qtr</u>	
Benefits Paid (000):	\$40,067	\$169,099	34	\$472,654	2005.4	\$11,866	1972.3
Initial Claims:	33,154	135,831	32	228,256	2005.3	30,849	2007.1
First Payments:	12,250	55,752	34	144,081	2005.3	12,250	2007.2
Weeks Claimed:	255,766	1,087,114	32	2,775,877	2005.4	255,766	2007.2
Wks Compensated:	195,524	853,521	32	2,477,795	2005.4	195,524	2007.2
Exhaustions:	5,743	24,072	32	70,297	2006.1	4,215	1998.4
Exhaustion Rate:		40.4%	11	63.1%	1987.1	19.5%	2007.1
Average Duration:		15.3	13	27.1	2006.4	7.9	2005.3
AWBA:	\$206.88	\$199.99	48	\$206.88	2007.2	\$45.89	1971.1
As % of AWW:	29.7		45				
Avg. Benefits per First Payment:		\$3,033					

Financial Information	Past 12 Months	Rank
State Revenues (000):	\$199,821	35
Total Wages (000)**:	\$17,469,536	25
Total Wages (Taxable Employers)(000)**:	\$14,328,588	25
Taxable Wages (000)**:	\$1,457,141	33
Avg. Weekly Wage**:	\$696.07	32
Avg. Tax Rate on Taxable Wages (%) **:	1.50	42
Avg. Tax Rate on Total Wages (%) **:	0.36	48
Calendar Yr Taxable Wage Base:	\$7,000	49
Trust Fund (TF) Balance (000):		
(Including Loans):	\$1,420,515	8
TF as % of Total Wages*:	2.60	10
Interest Earned (000):	\$16,989	8
Avg. High Cost Multiple +:	0.96	24
High Cost Multiple +:	0.85	11

Labor Force	(Quarterly)	Past 12 Mos	Rank
IUR (%):	1.1	1.1	44
TUR (%):	4.4	4.0	24
Total Unemp. (000):	87.6	80.3	27
Insured Unemployed (000) ***			
Regular Programs:	20.4	20.3	32
All Programs:	20.4	20.3	32
Reciency Rates (%) ***			
Regular Programs:	23	25	47
All Programs:	23	25	47
Covered Emp. (000)**:	1,812	1,775	25
Civ. Labor Force (000):	2,006	1,999	26
Subj. Employers (000):	102	101	24

Extended Benefits	(Quarterly)	Past 12 Months
Extended Benefits (000):	\$15	\$160
EB First Payments:	14	221
EB Weeks Claimed:	21	819
EB Exhaustions:	2	15

Loans	Rank
Outstanding Loan Bal (000):	\$0 1
Loan per Cov Employee:	\$0 1
Loan as % of Total Wages*:	0 1

* Based on extrapolated wages for the most recent 12 months.

** Wages and Covered Employment lag the rest of the Data Summary information by six months

*** Regular programs include State UI, UCFE and UCX.

+ Refers to most recent calendar year. Fourth and first quarter issues publish measure based on extrapolated wages. Second and third quarter issues publish measure based on actual wages.

See glossary for data definitions

Note: Blank cells appearing in any section of this report indicates that information is unavailable.

UI Data Summary for Maine

CYQ: 2007.2

Benefits	(Quarterly)	Past 12 Months	Rank	High Value : Qtr		Low Value : Qtr	
<u>Benefits Paid (000):</u>	\$30,325	\$112,869	39	\$59,871	1991.1	\$4,084	1973.4
<u>Initial Claims:</u>	14,671	67,872	39	55,565	1991.1	11,312	2005.3
<u>First Payments:</u>	7,248	32,606	41	35,621	1975.1	4,372	2000.3
<u>Weeks Claimed:</u>	139,715	533,131	40	443,727	1991.1	83,258	2000.3
<u>Wks Compensated:</u>	122,464	460,018	40	385,026	1991.1	65,703	2000.3
<u>Exhaustions:</u>	3,120	9,619	40	10,511	1975.2	1,314	1988.4
<u>Exhaustion Rate:</u>		31.1%	36	64.5%	1983.3	19.9%	1988.3
<u>Average Duration:</u>		14.1	26	18.7	1983.3	10.1	1980.1
<u>AWBA:</u>	\$253.99	\$251.47	36	\$253.99	2007.2	\$46.43	1971.3
As % of AWW:	39.8		17				
<u>Avg. Benefits per First Payment:</u>		\$3,462					

Financial Information	Past 12 Months	Rank
<u>State Revenues (000):</u>	\$106,733	45
<u>Total Wages (000)**:</u>	\$5,115,853	44
<u>Total Wages (Taxable Employers)(000)**:</u>	\$3,868,630	45
<u>Taxable Wages (000)**:</u>	\$547,694	43
<u>Avg. Weekly Wage**:</u>	\$637.86	45
<u>Avg. Tax Rate on Taxable Wages (%) **:</u>	1.80	35
<u>Avg. Tax Rate on Total Wages (%) **:</u>	0.68	28
<u>Calendar Yr Taxable Wage Base:</u>	\$12,000	21
<u>Trust Fund (TF) Balance (000):</u>		
(Including Loans):	\$457,358	30
<u>TF as % of Total Wages*:</u>	3.12	5
<u>Interest Earned (000):</u>	\$5,482	30
<u>Avg. High Cost Multiple +:</u>	1.64	4
<u>High Cost Multiple +:</u>	1.12	5

Labor Force	(Quarterly)	Past 12 Mos	Rank
<u>IUR (%):</u>	1.9	1.8	19
<u>TUR (%):</u>	4.4	4.5	22
<u>Total Unemp. (000):</u>	31.3	32.4	39
Insured Unemployed (000) ***			
<u>Regular Programs:</u>	10.9	10.5	39
<u>All Programs:</u>	10.9	10.5	39
Reciency Rates (%) ***			
<u>Regular Programs:</u>	35	32	23
<u>All Programs:</u>	35	32	23
<u>Covered Emp. (000)**:</u>	590	584	43
<u>Civ. Labor Force (000):</u>	713	714	42
<u>Subj. Employers (000):</u>	43	42	40

Extended Benefits	(Quarterly)	Past 12 Months
<u>Extended Benefits (000):</u>	\$0	\$0
EB First Payments:	0	0
EB Weeks Claimed:	0	0
EB Exhaustions:	0	0

Loans	Rank
<u>Outstanding Loan Bal (000):</u>	\$0 1
Loan per Cov Employee:	\$0 1
Loan as % of Total Wages*:	0 1

* Based on extrapolated wages for the most recent 12 months.

** Wages and Covered Employment lag the rest of the Data Summary information by six months

*** Regular programs include State UI, UCFE and UCX.

+ Refers to most recent calendar year. Fourth and first quarter issues publish measure based on extrapolated wages. Second and third quarter issues publish measure based on actual wages.

See glossary for data definitions

Note: Blank cells appearing in any section of this report indicates that information is unavailable.

UI Data Summary for **Maryland**

CYQ: 2007.2

Benefits	(Quarterly)	Past 12 Months	Rank	High Value : Qtr		Low Value : Qtr	
Benefits Paid (000):	\$95,676	\$403,102	22	\$152,928	1992.1	\$12,029	1973.3
Initial Claims:	47,002	201,225	26	118,620	1975.1	38,277	1973.2
First Payments:	20,102	99,631	25	70,645	1975.1	14,868	1973.2
Weeks Claimed:	396,855	1,684,908	24	1,021,835	1992.1	269,003	1973.4
Wks Compensated:	344,925	1,467,131	24	850,921	1982.1	202,353	1973.4
Exhaustions:	7,656	30,171	24	19,819	1975.3	3,394	1973.4
Exhaustion Rate:		31.5%	34	38.7%	1975.3	18.4%	1979.3
Average Duration:		14.7	18	17.9	1992.1	11.4	1974.4
AWBA:	\$281.17	\$278.36	25	\$281.17	2007.2	\$52.82	1971.2
As % of AWW:	32.8		37				
Avg. Benefits per First Payment:		\$4,046					

Financial Information	Past 12 Months	Rank
State Revenues (000):	\$427,597	22
Total Wages (000)**:	\$28,942,243	16
Total Wages (Taxable Employers)(000)**:	\$22,936,429	16
Taxable Wages (000)**:	\$1,992,469	24
Avg. Weekly Wage**:	\$856.37	9
Avg. Tax Rate on Taxable Wages (%) **:	2.24	24
Avg. Tax Rate on Total Wages (%) **:	0.51	40
Calendar Yr Taxable Wage Base:	\$8,500	34
Trust Fund (TF) Balance (000):		
(Including Loans):	\$1,068,349	11
TF as % of Total Wages*:	1.24	23
Interest Earned (000):	\$12,658	11
Avg. High Cost Multiple +:	0.82	26
High Cost Multiple +:	0.55	22

Labor Force	(Quarterly)	Past 12 Mos	Rank
IUR (%):	1.4	1.5	38
TUR (%):	3.6	3.9	37
Total Unemp. (000):	108.8	116.3	23
Insured Unemployed (000) ***			
Regular Programs:	33.6	35.4	23
All Programs:	33.6	35.4	23
Reciency Rates (%) ***			
Regular Programs:	31	30	32
All Programs:	31	30	32
Covered Emp. (000)**:	2,434	2,405	21
Civ. Labor Force (000):	2,998	3,019	20
Subj. Employers (000):	144	142	16

Extended Benefits	(Quarterly)	Past 12 Months
Extended Benefits (000):	\$0	\$0
EB First Payments:	0	0
EB Weeks Claimed:	0	0
EB Exhaustions:	0	0

Loans	Rank
Outstanding Loan Bal (000):	\$0 1
Loan per Cov Employee:	\$0 1
Loan as % of Total Wages*:	0 1

* Based on extrapolated wages for the most recent 12 months.

** Wages and Covered Employment lag the rest of the Data Summary information by six months

*** Regular programs include State UI, UCFE and UCX.

+ Refers to most recent calendar year. Fourth and first quarter issues publish measure based on extrapolated wages. Second and third quarter issues publish measure based on actual wages.

See glossary for data definitions

Note: Blank cells appearing in any section of this report indicates that information is unavailable.

UI Data Summary for **Massachusetts**

CYQ: 2007.2

Benefits	(Quarterly)	Past 12 Months	Rank	High Value : Qtr		Low Value : Qtr	
Benefits Paid (000):	\$338,772	\$1,395,597	7	\$634,981	2002.1	\$46,838	1972.4
Initial Claims:	96,277	395,941	13	250,766	1974.4	65,733	1997.3
First Payments:	43,075	216,080	13	157,733	1975.1	30,738	1987.2
Weeks Claimed:	1,016,453	4,280,156	10	2,382,332	1975.1	556,699	1987.4
Wks Compensated:	917,386	3,830,787	10	2,159,531	1975.1	518,866	1987.4
Exhaustions:	20,164	73,672	12	48,214	1975.2	10,557	1984.4
Exhaustion Rate:		35.0%	23	47.3%	2003.2	24.2%	1985.3
Average Duration:		17.7	4	20.4	1992.1	14.2	1985.2
AWBA:	\$379.00	\$373.11	1	\$379.00	2007.2	\$56.86	1971.2
As % of AWW:	37.8		27				
Avg. Benefits per First Payment:		\$6,459					

Financial Information	Past 12 Months	Rank
State Revenues (000):	\$1,616,183	7
Total Wages (000)**:	\$44,326,485	10
Total Wages (Taxable Employers)(000)**:	\$36,481,002	10
Taxable Wages (000)**:	\$5,030,422	11
Avg. Weekly Wage**:	\$1,004.08	4
Avg. Tax Rate on Taxable Wages (%) **:	3.84	6
Avg. Tax Rate on Total Wages (%) **:	1.18	6
Calendar Yr Taxable Wage Base:	\$14,000	19
Trust Fund (TF) Balance (000):		
(Including Loans):	\$1,258,104	10
TF as % of Total Wages*:	0.92	32
Interest Earned (000):	\$13,561	10
Avg. High Cost Multiple +:	0.41	37
High Cost Multiple +:	0.23	40

Labor Force	(Quarterly)	Past 12 Mos	Rank
IUR (%):	2.4	2.6	8
TUR (%):	4.8	5.0	15
Total Unemp. (000):	163.0	171.1	12
Insured Unemployed (000) ***			
Regular Programs:	76.8	81.0	10
All Programs:	76.8	81.0	10
Reciency Rates (%) ***			
Regular Programs:	47	47	8
All Programs:	47	47	8
Covered Emp. (000)**:	3,188	3,145	13
Civ. Labor Force (000):	3,416	3,415	13
Subj. Employers (000):	185	184	14

Extended Benefits	(Quarterly)	Past 12 Months
Extended Benefits (000):	\$0	\$0
EB First Payments:	0	0
EB Weeks Claimed:	0	0
EB Exhaustions:	0	0

Loans	Rank
Outstanding Loan Bal (000):	\$0 1
Loan per Cov Employee:	\$0 1
Loan as % of Total Wages*:	0 1

* Based on extrapolated wages for the most recent 12 months.

** Wages and Covered Employment lag the rest of the Data Summary information by six months

*** Regular programs include State UI, UCFE and UCX.

+ Refers to most recent calendar year. Fourth and first quarter issues publish measure based on extrapolated wages. Second and third quarter issues publish measure based on actual wages.

See glossary for data definitions

Note: Blank cells appearing in any section of this report indicates that information is unavailable.

UI Data Summary for Michigan

CYQ: 2007.2

Benefits	(Quarterly)	Past 12 Months	Rank	High Value : Qtr	Low Value : Qtr
Benefits Paid (000):	\$436,878	\$1,948,452	5	\$667,851 2004.1	\$37,946 1973.3
Initial Claims:	153,997	939,918	6	631,661 1980.2	107,765 1999.2
First Payments:	72,098	459,313	6	302,813 1975.1	45,089 1973.2
Weeks Claimed:	1,730,480	7,685,700	4	4,570,735 1975.1	850,960 2000.2
Wks Compensated:	1,530,359	6,792,561	4	4,105,400 1975.1	659,905 1973.4
Exhaustions:	44,266	161,603	2	97,918 1975.2	17,145 2000.3
Exhaustion Rate:		34.0%	25	46.6% 1981.1	18.4% 2000.4
Average Duration:		14.8	17	18.1 1980.4	10.1 2001.1
AWBA:	\$292.33	\$293.74	16	\$295.13 2007.1	\$57.21 1971.4
As % of AWW:	36.2		31		
Avg. Benefits per First Payment:		\$4,242			

Financial Information	Past 12 Months	Rank
State Revenues (000):	\$1,624,104	6
Total Wages (000)**:	\$46,286,606	9
Total Wages (Taxable Employers)(000)**:	\$37,043,436	9
Taxable Wages (000)**:	\$2,920,766	13
Avg. Weekly Wage**:	\$806.99	16
Avg. Tax Rate on Taxable Wages (%) **:	4.60	2
Avg. Tax Rate on Total Wages (%) **:	1.09	9
Calendar Yr Taxable Wage Base:	\$9,000	29
Trust Fund (TF) Balance (000):		
(Including Loans):	\$157,490	49
TF as % of Total Wages*:	0.11	53
Interest Earned (000):	\$1,504	49
Avg. High Cost Multiple +:	0.03	52
High Cost Multiple +:	0.02	52

Labor Force	(Quarterly)	Past 12 Mos	Rank
IUR (%):	3.2	3.5	3
TUR (%):	6.9	7.0	2
Total Unemp. (000):	349.1	354.7	4
Insured Unemployed (000) ***			
Regular Programs:	133.6	148.2	4
All Programs:	133.6	148.2	4
Reciency Rates (%) ***			
Regular Programs:	38	42	18
All Programs:	38	42	18
Covered Emp. (000)**:	4,195	4,182	8
Civ. Labor Force (000):	5,048	5,075	8
Subj. Employers (000):	222	220	9

Extended Benefits	(Quarterly)	Past 12 Months
Extended Benefits (000):	\$0	\$0
EB First Payments:	0	0
EB Weeks Claimed:	0	0
EB Exhaustions:	0	0

Loans	Rank
Outstanding Loan Bal (000):	\$0 1
Loan per Cov Employee:	\$0 1
Loan as % of Total Wages*:	0 1

* Based on extrapolated wages for the most recent 12 months.

** Wages and Covered Employment lag the rest of the Data Summary information by six months

*** Regular programs include State UI, UCFE and UCX.

+ Refers to most recent calendar year. Fourth and first quarter issues publish measure based on extrapolated wages. Second and third quarter issues publish measure based on actual wages.

See glossary for data definitions

Note: Blank cells appearing in any section of this report indicates that information is unavailable.

UI Data Summary for **Minnesota**

CYQ: 2007.2

Benefits	(Quarterly)	Past 12 Months	Rank	High Value : Qtr		Low Value : Qtr	
Benefits Paid (000):	\$189,257	\$731,121	13	\$297,915	2002.1	\$10,434	1971.3
Initial Claims:	59,863	289,019	20	111,066	1982.4	30,305	1973.2
First Payments:	27,279	144,328	19	68,591	1975.1	14,570	1973.3
Weeks Claimed:	643,859	2,556,130	14	1,087,887	1983.1	257,773	1973.3
Wks Compensated:	573,436	2,259,767	13	1,008,063	1983.1	199,220	1973.3
Exhaustions:	13,663	44,654	15	29,103	1983.1	4,658	1978.3
Exhaustion Rate:		31.7%	33	51.9%	1975.3	22.5%	2000.4
Average Duration:		15.7	12	18.2	1983.3	13.0	1980.1
AWBA:	\$337.84	\$338.58	5	\$348.47	2007.1	\$48.42	1971.3
As % of AWW:	41.9		9				
Avg. Benefits per First Payment:		\$5,066					

Financial Information	Past 12 Months	Rank
State Revenues (000):	\$891,660	13
Total Wages (000)**:	\$28,871,336	15
Total Wages (Taxable Employers)(000)**:	\$22,955,133	15
Taxable Wages (000)**:	\$4,936,516	9
Avg. Weekly Wage**:	\$807.36	15
Avg. Tax Rate on Taxable Wages (%) **:	1.80	34
Avg. Tax Rate on Total Wages (%) **:	0.87	11
Calendar Yr Taxable Wage Base:	\$25,000	8
Trust Fund (TF) Balance (000):		
(Including Loans):	\$407,285	34
TF as % of Total Wages*:	0.46	46
Interest Earned (000):	\$4,472	34
Avg. High Cost Multiple +:	0.29	42
High Cost Multiple +:	0.23	41

Labor Force	(Quarterly)	Past 12 Mos	Rank
IUR (%):	1.9	1.8	18
TUR (%):	4.4	4.2	21
Total Unemp. (000):	130.8	125.3	18
Insured Unemployed (000) ***			
Regular Programs:	49.1	48.7	15
All Programs:	49.1	48.7	15
Reciency Rates (%) ***			
Regular Programs:	38	39	20
All Programs:	38	39	20
Covered Emp. (000)**:	2,655	2,637	19
Civ. Labor Force (000):	2,949	2,951	21
Subj. Employers (000):	136	135	18

Extended Benefits	(Quarterly)	Past 12 Months
Extended Benefits (000):	\$0	\$0
EB First Payments:	0	0
EB Weeks Claimed:	0	0
EB Exhaustions:	0	0

Loans	Rank
Outstanding Loan Bal (000):	\$0 1
Loan per Cov Employee:	\$0 1
Loan as % of Total Wages*:	0 1

* Based on extrapolated wages for the most recent 12 months.

** Wages and Covered Employment lag the rest of the Data Summary information by six months

*** Regular programs include State UI, UCFE and UCX.

+ Refers to most recent calendar year. Fourth and first quarter issues publish measure based on extrapolated wages. Second and third quarter issues publish measure based on actual wages.

See glossary for data definitions

Note: Blank cells appearing in any section of this report indicates that information is unavailable.

UI Data Summary for **Mississippi**

CYQ: **2007.2**

Benefits	(Quarterly)	Past 12 Months	Rank	High Value : Qtr		Low Value : Qtr	
Benefits Paid (000):	\$32,932	\$129,262	36	\$99,628	2005.4	\$1,738	1972.4
Initial Claims:	35,288	136,345	30	111,429	1982.1	10,210	1972.3
First Payments:	13,547	55,994	32	46,604	1982.1	3,605	1972.3
Weeks Claimed:	237,722	930,942	33	687,309	1983.1	64,694	1972.4
Wks Compensated:	191,879	757,501	33	545,032	1983.1	43,771	1972.4
Exhaustions:	4,204	16,350	35	13,945	2006.1	903	1973.4
Exhaustion Rate:		30.8%	38	37.6%	1983.3	19.3%	1974.3
Average Duration:		13.5	32	16.9	2006.4	8.5	1974.4
AWBA:	\$176.65	\$176.03	52	\$202.61	2005.4	\$31.97	1974.1
As % of AWW:	30.0		44				
Avg. Benefits per First Payment:		\$2,309					

Financial Information	Past 12 Months	Rank
State Revenues (000):	\$125,180	42
Total Wages (000)**:	\$8,931,915	35
Total Wages (Taxable Employers)(000)**:	\$7,207,754	35
Taxable Wages (000)**:	\$802,880	38
Avg. Weekly Wage**:	\$588.47	50
Avg. Tax Rate on Taxable Wages (%) **:	1.73	36
Avg. Tax Rate on Total Wages (%) **:	0.48	42
Calendar Yr Taxable Wage Base:	\$7,000	49
Trust Fund (TF) Balance (000):		
(Including Loans):	\$741,997	17
TF as % of Total Wages*:	2.71	8
Interest Earned (000):	\$8,898	17
Avg. High Cost Multiple +:	1.78	3
High Cost Multiple +:	1.39	3

Labor Force	(Quarterly)	Past 12 Mos	Rank
IUR (%):	1.7	1.7	25
TUR (%):	6.4	6.6	3
Total Unemp. (000):	84.4	86.3	28
Insured Unemployed (000) ***			
Regular Programs:	19.3	19.2	33
All Programs:	19.3	19.2	33
Reciency Rates (%) ***			
Regular Programs:	23	22	48
All Programs:	23	22	48
Covered Emp. (000)**:	1,110	1,096	35
Civ. Labor Force (000):	1,317	1,315	36
Subj. Employers (000):	56	55	36

Extended Benefits	(Quarterly)	Past 12 Months
Extended Benefits (000):	\$0	\$0
EB First Payments:	0	0
EB Weeks Claimed:	0	0
EB Exhaustions:	0	0

Loans	Rank
Outstanding Loan Bal (000):	\$0 1
Loan per Cov Employee:	\$0 1
Loan as % of Total Wages*:	0 1

* Based on extrapolated wages for the most recent 12 months.

** Wages and Covered Employment lag the rest of the Data Summary information by six months

*** Regular programs include State UI, UCFE and UCX.

+ Refers to most recent calendar year. Fourth and first quarter issues publish measure based on extrapolated wages. Second and third quarter issues publish measure based on actual wages.

See glossary for data definitions

Note: Blank cells appearing in any section of this report indicates that information is unavailable.

UI Data Summary for Missouri

CYQ: 2007.2

Benefits	(Quarterly)	Past 12 Months	Rank	High Value : Qtr	Low Value : Qtr
Benefits Paid (000):	\$98,564	\$420,098	20	\$174,057 2002.1	\$13,289 1973.3
Initial Claims:	81,403	375,951	15	230,473 1975.1	61,852 1972.2
First Payments:	28,894	142,690	17	102,722 1975.1	21,081 1972.2
Weeks Claimed:	552,480	2,411,043	17	1,390,771 1975.1	368,393 1973.3
Wks Compensated:	449,713	1,964,392	21	1,168,718 1975.1	267,636 1973.3
Exhaustions:	10,652	41,788	19	30,085 1975.3	5,746 1973.4
Exhaustion Rate:		31.0%	37	43.2% 2004.2	22.6% 2000.4
Average Duration:		13.8	30	16.6 2004.1	10.4 1979.3
AWBA:	\$224.30	\$219.27	45	\$224.30 2007.2	\$49.06 1971.3
As % of AWW:	31.7		42		
Avg. Benefits per First Payment:		\$2,944			

Financial Information	Past 12 Months	Rank
State Revenues (000):	\$571,350	18
Total Wages (000)**:	\$25,602,024	21
Total Wages (Taxable Employers)(000)**:	\$20,812,263	22
Taxable Wages (000)**:	\$2,407,659	18
Avg. Weekly Wage**:	\$707.34	28
Avg. Tax Rate on Taxable Wages (%) **:	2.19	26
Avg. Tax Rate on Total Wages (%) **:	0.68	31
Calendar Yr Taxable Wage Base:	\$11,000	23
Trust Fund (TF) Balance (000):		
(Including Loans):	\$92,447	51
TF as % of Total Wages*:	0.12	52
Interest Earned (000):	\$863	51
Avg. High Cost Multiple +:	N.A.	53
High Cost Multiple +:	N.A.	53

Labor Force	(Quarterly)	Past 12 Mos	Rank
IUR (%):	1.6	1.8	27
TUR (%):	4.6	4.9	16
Total Unemp. (000):	141.4	148.4	17
Insured Unemployed (000) ***			
Regular Programs:	43.8	47.9	17
All Programs:	43.8	47.9	17
Reciency Rates (%) ***			
Regular Programs:	31	32	31
All Programs:	31	32	31
Covered Emp. (000)**:	2,680	2,646	18
Civ. Labor Force (000):	3,066	3,051	17
Subj. Employers (000):	139	139	17

Extended Benefits	(Quarterly)	Past 12 Months
Extended Benefits (000):	\$0	\$0
EB First Payments:	0	0
EB Weeks Claimed:	0	0
EB Exhaustions:	0	0

Loans	Rank
Outstanding Loan Bal (000):	\$0 1
Loan per Cov Employee:	\$0 1
Loan as % of Total Wages*:	0 1

* Based on extrapolated wages for the most recent 12 months.

** Wages and Covered Employment lag the rest of the Data Summary information by six months

*** Regular programs include State UI, UCFE and UCX.

+ Refers to most recent calendar year. Fourth and first quarter issues publish measure based on extrapolated wages. Second and third quarter issues publish measure based on actual wages.

See glossary for data definitions

Note: Blank cells appearing in any section of this report indicates that information is unavailable.

UI Data Summary for Montana

CYQ: 2007.2

Benefits	(Quarterly)	Past 12 Months	Rank	High Value : Qtr		Low Value : Qtr	
<u>Benefits Paid (000):</u>	\$14,775	\$65,201	49	\$29,706	2004.1	\$1,267	1971.3
<u>Initial Claims:</u>	9,693	47,147	48	23,928	1982.4	7,063	2006.3
<u>First Payments:</u>	3,768	20,728	49	14,506	1982.1	2,169	1971.3
<u>Weeks Claimed:</u>	78,762	353,884	49	218,479	1983.1	47,952	1973.3
<u>Wks Compensated:</u>	68,567	306,900	49	184,305	1983.1	31,660	1971.3
<u>Exhaustions:</u>	1,923	6,563	45	5,570	1983.1	1,032	1971.4
<u>Exhaustion Rate:</u>		32.1%	32	46.0%	1983.3	25.2%	1978.3
<u>Average Duration:</u>		14.8	16	16.3	2004.2	12.2	1979.1
<u>AWBA:</u>	\$236.93	\$225.00	41	\$236.93	2007.2	\$37.87	1971.2
As % of AWW:	41.3		14				
<u>Avg. Benefits per First Payment:</u>		\$3,146					

Financial Information	Past 12 Months	Rank
<u>State Revenues (000):</u>	\$85,585	46
<u>Total Wages (000)**:</u>	\$3,322,293	47
<u>Total Wages (Taxable Employers)(000)**:</u>	\$2,858,119	47
<u>Taxable Wages (000)**:</u>	\$1,155,269	39
<u>Avg. Weekly Wage**:</u>	\$573.32	51
<u>Avg. Tax Rate on Taxable Wages (%) **:</u>	1.17	50
<u>Avg. Tax Rate on Total Wages (%) **:</u>	0.76	22
<u>Calendar Yr Taxable Wage Base:</u>	\$22,700	10
<u>Trust Fund (TF) Balance (000):</u>		
(Including Loans):	\$251,973	42
<u>TF as % of Total Wages*:</u>	2.31	13
<u>Interest Earned (000):</u>	\$3,008	40
<u>Avg. High Cost Multiple +:</u>	1.41	6
<u>High Cost Multiple +:</u>	0.79	14

Labor Force	(Quarterly)	Past 12 Mos	Rank
<u>IUR (%):</u>	1.5	1.7	29
<u>TUR (%):</u>	2.2	2.7	52
<u>Total Unemp. (000):</u>	11.0	13.3	51
<u>Insured Unemployed (000) ***</u>			
<u>Regular Programs:</u>	6.5	7.4	48
<u>All Programs:</u>	6.5	7.4	48
<u>Reciency Rates (%) ***</u>			
<u>Regular Programs:</u>	59	56	2
<u>All Programs:</u>	59	56	2
<u>Covered Emp. (000)**:</u>	418	413	47
<u>Civ. Labor Force (000):</u>	501	496	45
<u>Subj. Employers (000):</u>	37	37	42

Extended Benefits	(Quarterly)	Past 12 Months
<u>Extended Benefits (000):</u>	\$0	\$0
EB First Payments:	0	0
EB Weeks Claimed:	0	0
EB Exhaustions:	0	0

Loans	Rank
<u>Outstanding Loan Bal (000):</u>	\$0 1
Loan per Cov Employee:	\$0 1
Loan as % of Total Wages*:	0 1

* Based on extrapolated wages for the most recent 12 months.

** Wages and Covered Employment lag the rest of the Data Summary information by six months

*** Regular programs include State UI, UCFE and UCX.

+ Refers to most recent calendar year. Fourth and first quarter issues publish measure based on extrapolated wages. Second and third quarter issues publish measure based on actual wages.

See glossary for data definitions

Note: Blank cells appearing in any section of this report indicates that information is unavailable.

UI Data Summary for **Nebraska**

CYQ: 2007.2

Benefits	(Quarterly)	Past 12 Months	Rank	High Value : Qtr		Low Value : Qtr	
Benefits Paid (000):	\$20,450	\$94,052	46	\$40,183	2003.1	\$2,319	1971.3
Initial Claims:	14,079	71,298	40	29,750	1982.4	7,244	1972.2
First Payments:	6,686	33,624	42	22,141	1975.1	3,557	1972.2
Weeks Claimed:	117,889	539,576	42	314,764	1983.1	51,311	1972.3
Wks Compensated:	90,655	414,866	43	282,568	1983.1	45,263	1978.3
Exhaustions:	3,784	15,027	38	6,938	1983.1	917	1977.4
Exhaustion Rate:		45.0%	4	47.3%	1975.2	23.7%	1989.1
Average Duration:		12.3	46	15.4	1976.1	10.3	1980.2
AWBA:	\$232.50	\$233.30	43	\$238.99	2007.1	\$42.90	1971.3
As % of AWW:	36.2		32				
Avg. Benefits per First Payment:		\$2,797					

Financial Information	Past 12 Months	Rank
State Revenues (000):	\$138,505	39
Total Wages (000)**:	\$7,921,752	37
Total Wages (Taxable Employers)(000)**:	\$6,213,649	37
Taxable Wages (000)**:	\$611,585	40
Avg. Weekly Wage**:	\$643.13	43
Avg. Tax Rate on Taxable Wages (%) **:	2.53	16
Avg. Tax Rate on Total Wages (%) **:	0.68	30
Calendar Yr Taxable Wage Base:	\$9,000	29
Trust Fund (TF) Balance (000):		
(Including Loans):	\$265,750	38
TF as % of Total Wages*:	1.14	27
Interest Earned (000):	\$3,022	39
Avg. High Cost Multiple +:	1.06	17
High Cost Multiple +:	0.65	20

Labor Force	(Quarterly)	Past 12 Mos	Rank
IUR (%):	1.0	1.2	45
TUR (%):	3.0	3.0	46
Total Unemp. (000):	30.0	29.2	40
Insured Unemployed (000) ***			
Regular Programs:	9.1	10.3	42
All Programs:	9.1	10.3	42
Reciency Rates (%) ***			
Regular Programs:	30	35	34
All Programs:	30	35	34
Covered Emp. (000)**:	895	886	37
Civ. Labor Force (000):	986	978	37
Subj. Employers (000):	48	48	38

Extended Benefits	(Quarterly)	Past 12 Months
Extended Benefits (000):	\$0	\$0
EB First Payments:	0	0
EB Weeks Claimed:	0	0
EB Exhaustions:	0	0

Loans	Rank
Outstanding Loan Bal (000):	\$0 1
Loan per Cov Employee:	\$0 1
Loan as % of Total Wages*:	0 1

* Based on extrapolated wages for the most recent 12 months.

** Wages and Covered Employment lag the rest of the Data Summary information by six months

*** Regular programs include State UI, UCFE and UCX.

+ Refers to most recent calendar year. Fourth and first quarter issues publish measure based on extrapolated wages. Second and third quarter issues publish measure based on actual wages.

See glossary for data definitions

Note: Blank cells appearing in any section of this report indicates that information is unavailable.

UI Data Summary for Nevada

CYQ: 2007.2

Benefits	(Quarterly)	Past 12 Months	Rank	<u>High Value : Qtr</u>		<u>Low Value : Qtr</u>	
Benefits Paid (000):	\$73,113	\$268,179	25	\$102,406	2002.1	\$3,807	1971.2
Initial Claims:	37,475	142,113	29	65,819	2001.4	15,524	1989.2
First Payments:	16,885	69,619	29	37,987	2001.4	5,250	1973.2
Weeks Claimed:	295,298	1,094,425	29	511,261	2001.4	81,969	1973.3
Wks Compensated:	264,697	977,726	29	449,715	2002.1	70,349	1978.3
Exhaustions:	6,648	21,789	29	12,048	2002.2	1,506	1978.3
Exhaustion Rate:		34.3%	24	50.0%	1976.3	21.3%	1989.3
Average Duration:		14.0	28	16.9	1983.4	11.4	1979.2
AWBA:	\$282.20	\$280.10	24	\$283.20	2007.1	\$46.51	1971.2
As % of AWW:	36.9		29				
Avg. Benefits per First Payment:		\$3,852					

Financial Information	Past 12 Months	Rank
State Revenues (000):	\$369,478	23
Total Wages (000)**:	\$13,392,643	29
Total Wages (Taxable Employers)(000)**:	\$11,690,196	29
Taxable Wages (000)**:	\$3,606,475	17
Avg. Weekly Wage**:	\$765.44	21
Avg. Tax Rate on Taxable Wages (%) **:	1.44	45
Avg. Tax Rate on Total Wages (%) **:	0.82	17
Calendar Yr Taxable Wage Base:	\$24,600	9
Trust Fund (TF) Balance (000):		
(Including Loans):	\$768,293	15
TF as % of Total Wages*:	1.72	16
Interest Earned (000):	\$9,144	15
Avg. High Cost Multiple +:	0.99	21
High Cost Multiple +:	0.61	21

Labor Force	(Quarterly)	Past 12 Mos	Rank
IUR (%):	1.8	1.7	20
TUR (%):	4.5	4.4	20
Total Unemp. (000):	59.5	57.6	34
Insured Unemployed (000) ***			
Regular Programs:	23.1	21.5	29
All Programs:	23.1	21.5	29
Reciency Rates (%) ***			
Regular Programs:	39	37	17
All Programs:	39	37	17
Covered Emp. (000)**:	1,268	1,255	32
Civ. Labor Force (000):	1,337	1,323	35
Subj. Employers (000):	59	58	35

Extended Benefits	(Quarterly)	Past 12 Months
Extended Benefits (000):	\$0	\$0
EB First Payments:	0	0
EB Weeks Claimed:	0	0
EB Exhaustions:	0	0

Loans	Rank
Outstanding Loan Bal (000):	\$0 1
Loan per Cov Employee:	\$0 1
Loan as % of Total Wages*:	0 1

* Based on extrapolated wages for the most recent 12 months.

** Wages and Covered Employment lag the rest of the Data Summary information by six months

*** Regular programs include State UI, UCFE and UCX.

+ Refers to most recent calendar year. Fourth and first quarter issues publish measure based on extrapolated wages. Second and third quarter issues publish measure based on actual wages.

See glossary for data definitions

Note: Blank cells appearing in any section of this report indicates that information is unavailable.

UI Data Summary for New Hampshire

CYQ: 2007.2

Benefits	(Quarterly)	Past 12 Months	Rank	<u>High Value : Qtr</u>		<u>Low Value : Qtr</u>	
Benefits Paid (000):	\$19,856	\$80,338	48	\$34,830	2003.1	\$1,519	1972.4
Initial Claims:	11,706	50,312	46	37,881	1974.4	5,974	2000.2
First Payments:	5,415	26,075	44	31,034	1975.2	2,086	1999.4
Weeks Claimed:	89,704	366,065	45	266,020	1975.1	24,573	1987.4
Wks Compensated:	78,790	318,881	45	240,574	1975.1	16,768	1987.4
Exhaustions:	1,193	4,151	49	5,519	1991.4	1	1985.3
Exhaustion Rate:		16.6%	52	33.8%	2003.2	1.8%	1988.1
Average Duration:		12.2	48	18.0	2004.1	5.4	1988.1
AWBA:	\$259.21	\$259.07	33	\$271.36	2002.4	\$45.06	1971.2
As % of AWW:	32.0		41				
Avg. Benefits per First Payment:		\$3,081					

Financial Information	Past 12 Months	Rank
State Revenues (000):	\$62,664	48
Total Wages (000)**:	\$7,427,516	38
Total Wages (Taxable Employers)(000)**:	\$6,102,450	38
Taxable Wages (000)**:	\$422,292	46
Avg. Weekly Wage**:	\$811.42	13
Avg. Tax Rate on Taxable Wages (%) **:	1.45	44
Avg. Tax Rate on Total Wages (%) **:	0.31	51
Calendar Yr Taxable Wage Base:	\$8,000	41
Trust Fund (TF) Balance (000):		
(Including Loans):	\$256,016	40
TF as % of Total Wages*:	1.18	25
Interest Earned (000):	\$3,056	38
Avg. High Cost Multiple +:	1.35	10
High Cost Multiple +:	0.50	23

Labor Force	(Quarterly)	Past 12 Mos	Rank
IUR (%):	1.2	1.2	43
TUR (%):	3.9	3.7	35
Total Unemp. (000):	29.1	27.2	41
Insured Unemployed (000) ***			
Regular Programs:	7.3	7.4	44
All Programs:	7.3	7.4	44
Reciency Rates (%) ***			
Regular Programs:	25	27	42
All Programs:	25	27	42
Covered Emp. (000)**:	625	619	41
Civ. Labor Force (000):	743	742	41
Subj. Employers (000):	41	41	41

Extended Benefits	(Quarterly)	Past 12 Months
Extended Benefits (000):	\$0	\$0
EB First Payments:	0	0
EB Weeks Claimed:	0	0
EB Exhaustions:	0	0

Loans	Rank
Outstanding Loan Bal (000):	1
Loan per Cov Employee:	1
Loan as % of Total Wages*:	1

* Based on extrapolated wages for the most recent 12 months.

** Wages and Covered Employment lag the rest of the Data Summary information by six months

*** Regular programs include State UI, UCFE and UCX.

+ Refers to most recent calendar year. Fourth and first quarter issues publish measure based on extrapolated wages. Second and third quarter issues publish measure based on actual wages.

See glossary for data definitions

Note: Blank cells appearing in any section of this report indicates that information is unavailable.

UI Data Summary for New Jersey

CYQ: 2007.2

Benefits	(Quarterly)	Past 12 Months	Rank	High Value : Qtr		Low Value : Qtr	
<u>Benefits Paid (000):</u>	\$461,417	\$1,893,935	4	\$616,958	2004.1	\$64,334	1972.4
<u>Initial Claims:</u>	138,123	552,194	9	290,136	1975.1	93,677	1987.3
<u>First Payments:</u>	61,452	311,193	8	185,783	1975.1	45,958	1988.2
<u>Weeks Claimed:</u>	1,409,326	5,980,479	6	2,824,241	1975.1	762,372	1987.4
<u>Wks Compensated:</u>	1,317,484	5,555,535	6	2,724,700	1975.1	715,819	1987.4
<u>Exhaustions:</u>	35,790	136,077	4	65,321	1975.2	18,202	1988.4
<u>Exhaustion Rate:</u>		44.6%	5	58.7%	2003.1	33.3%	1988.3
<u>Average Duration:</u>		17.9	3	19.5	1993.1	13.7	1974.1
<u>AWBA:</u>	\$363.10	\$352.47	3	\$363.10	2007.2	\$61.32	1971.1
As % of AWW:	36.7		30				
<u>Avg. Benefits per First Payment:</u>		\$6,086					

Financial Information	Past 12 Months	Rank
<u>State Revenues (000):</u>	\$1,864,903	5
<u>Total Wages (000)**:</u>	\$53,895,335	8
<u>Total Wages (Taxable Employers)(000)**:</u>	\$44,252,939	7
<u>Taxable Wages (000)**:</u>	\$9,047,689	3
<u>Avg. Weekly Wage**:</u>	\$988.98	5
<u>Avg. Tax Rate on Taxable Wages (%) **:</u>	1.62	38
<u>Avg. Tax Rate on Total Wages (%) **:</u>	0.71	26
<u>Calendar Yr Taxable Wage Base:</u>	\$26,600	6
<u>Trust Fund (TF) Balance (000):</u>		
(Including Loans):	\$725,608	19
<u>TF as % of Total Wages*:</u>	0.43	47
<u>Interest Earned (000):</u>	\$7,580	21
<u>Avg. High Cost Multiple +:</u>	0.23	48
<u>High Cost Multiple +:</u>	0.13	48

Labor Force	(Quarterly)	Past 12 Mos	Rank
<u>IUR (%):</u>	2.7	2.9	5
<u>TUR (%):</u>	4.2	4.4	31
<u>Total Unemp. (000):</u>	188.4	198.2	11
Insured Unemployed (000) ***			
<u>Regular Programs:</u>	105.7	112.1	6
<u>All Programs:</u>	105.7	112.1	6
Reciency Rates (%) ***			
<u>Regular Programs:</u>	56	57	3
<u>All Programs:</u>	56	57	3
<u>Covered Emp. (000)**:</u>	3,942	3,892	11
<u>Civ. Labor Force (000):</u>	4,488	4,512	11
<u>Subj. Employers (000):</u>	248	259	7

Extended Benefits	(Quarterly)	Past 12 Months
<u>Extended Benefits (000):</u>	\$0	\$0
EB First Payments:	0	0
EB Weeks Claimed:	0	0
EB Exhaustions:	0	0

Loans	Rank
<u>Outstanding Loan Bal (000):</u>	\$0 1
Loan per Cov Employee:	\$0 1
Loan as % of Total Wages*:	0 1

* Based on extrapolated wages for the most recent 12 months.

** Wages and Covered Employment lag the rest of the Data Summary information by six months

*** Regular programs include State UI, UCFE and UCX.

+ Refers to most recent calendar year. Fourth and first quarter issues publish measure based on extrapolated wages. Second and third quarter issues publish measure based on actual wages.

See glossary for data definitions

Note: Blank cells appearing in any section of this report indicates that information is unavailable.

UI Data Summary for New Mexico

CYQ: 2007.2

Benefits	(Quarterly)	Past 12 Months	Rank	High Value : Qtr		Low Value : Qtr	
<u>Benefits Paid (000):</u>	\$31,195	\$113,383	37	\$36,093	2004.1	\$2,686	1972.3
<u>Initial Claims:</u>	13,776	51,194	41	25,921	1983.1	9,060	2006.1
<u>First Payments:</u>	7,345	28,601	39	12,622	1975.1	3,613	1972.2
<u>Weeks Claimed:</u>	145,973	542,512	39	275,784	1983.1	82,983	1972.3
<u>Wks Compensated:</u>	125,854	462,235	39	220,164	1983.1	58,692	1972.3
<u>Exhaustions:</u>	3,259	11,164	39	5,308	1983.1	994	1978.4
<u>Exhaustion Rate:</u>		41.1%	8	46.4%	1983.2	21.8%	1979.4
<u>Average Duration:</u>		16.2	11	19.3	1976.1	14.1	1980.2
<u>AWBA:</u>	\$249.74	\$247.22	39	\$250.38	2006.4	\$44.69	1971.2
As % of AWW:	38.7		24				
<u>Avg. Benefits per First Payment:</u>		\$3,964					

Financial Information	Past 12 Months	Rank
<u>State Revenues (000):</u>	\$110,633	43
<u>Total Wages (000)**:</u>	\$7,081,707	39
<u>Total Wages (Taxable Employers)(000)**:</u>	\$5,611,761	39
<u>Taxable Wages (000)**:</u>	\$1,403,999	36
<u>Avg. Weekly Wage**:</u>	\$646.21	42
<u>Avg. Tax Rate on Taxable Wages (%) **:</u>	0.97	51
<u>Avg. Tax Rate on Total Wages (%) **:</u>	0.49	41
<u>Calendar Yr Taxable Wage Base:</u>	\$18,600	14
<u>Trust Fund (TF) Balance (000):</u>		
(Including Loans):	\$577,951	27
<u>TF as % of Total Wages*:</u>	2.69	9
<u>Interest Earned (000):</u>	\$6,978	24
<u>Avg. High Cost Multiple +:</u>	2.03	1
<u>High Cost Multiple +:</u>	1.73	1

Labor Force	(Quarterly)	Past 12 Mos	Rank
<u>IUR (%):</u>	1.5	1.4	32
<u>TUR (%):</u>	3.7	3.8	36
<u>Total Unemp. (000):</u>	34.4	35.7	37
<u>Insured Unemployed (000) ***</u>			
<u>Regular Programs:</u>	11.8	11.2	38
<u>All Programs:</u>	11.8	11.2	38
<u>Reciency Rates (%) ***</u>			
<u>Regular Programs:</u>	34	31	26
<u>All Programs:</u>	34	31	26
<u>Covered Emp. (000)**:</u>	791	777	38
<u>Civ. Labor Force (000):</u>	941	938	38
<u>Subj. Employers (000):</u>	45	45	39

Extended Benefits	(Quarterly)	Past 12 Months
<u>Extended Benefits (000):</u>	\$0	\$0
EB First Payments:	0	0
EB Weeks Claimed:	0	0
EB Exhaustions:	0	0

Loans	Rank
<u>Outstanding Loan Bal (000):</u>	\$0 1
Loan per Cov Employee:	\$0 1
Loan as % of Total Wages*:	0 1

* Based on extrapolated wages for the most recent 12 months.

** Wages and Covered Employment lag the rest of the Data Summary information by six months

*** Regular programs include State UI, UCFE and UCX.

+ Refers to most recent calendar year. Fourth and first quarter issues publish measure based on extrapolated wages. Second and third quarter issues publish measure based on actual wages.

See glossary for data definitions

Note: Blank cells appearing in any section of this report indicates that information is unavailable.

UI Data Summary for New York

CYQ: 2007.2

Benefits	(Quarterly)	Past 12 Months	Rank	High Value : Qtr		Low Value : Qtr	
				Value	Year	Value	Year
Benefits Paid (000):	\$533,514	\$2,140,728	2	\$933,140	2002.1	\$126,179	1973.4
Initial Claims:	227,504	990,840	3	674,249	1974.4	188,751	2000.3
First Payments:	93,655	448,290	3	355,805	1975.1	78,936	1985.2
Weeks Claimed:	2,127,535	9,206,321	2	5,968,340	1975.1	1,728,933	1999.4
Wks Compensated:	1,852,307	7,885,709	2	5,422,159	1975.1	1,543,669	2000.2
Exhaustions:	41,223	171,118	3	119,461	1975.3	36,374	1988.1
Exhaustion Rate:		37.7%	15	59.2%	2003.2	29.2%	1974.3
Average Duration:		17.6	5	23.0	1976.1	15.4	2001.2
AWBA:	\$300.84	\$282.76	12	\$300.84	2007.2	\$57.80	1971.3
As % of AWW:	28.3		48				
Avg. Benefits per First Payment:		\$4,775					

Financial Information	Past 12 Months	Rank
State Revenues (000):	\$2,437,360	2
Total Wages (000)**:	\$121,361,423	2
Total Wages (Taxable Employers)(000)**:	\$95,138,944	3
Taxable Wages (000)**:	\$5,794,896	4
Avg. Weekly Wage**:	\$1,064.99	2
Avg. Tax Rate on Taxable Wages (%) **:	3.99	5
Avg. Tax Rate on Total Wages (%) **:	0.67	32
Calendar Yr Taxable Wage Base:	\$8,500	34
Trust Fund (TF) Balance (000):		
(Including Loans):	\$726,244	18
TF as % of Total Wages*:	0.20	51
Interest Earned (000):	\$6,633	26
Avg. High Cost Multiple +:	0.07	51
High Cost Multiple +:	0.04	51

Labor Force	(Quarterly)	Past 12 Mos	Rank
IUR (%):	2.0	2.1	15
TUR (%):	4.2	4.3	30
Total Unemp. (000):	395.9	408.0	3
Insured Unemployed (000) ***			
Regular Programs:	164.0	177.1	2
All Programs:	164.0	177.1	2
Reciency Rates (%) ***			
Regular Programs:	41	43	13
All Programs:	41	43	13
Covered Emp. (000)**:	8,460	8,298	3
Civ. Labor Force (000):	9,424	9,480	3
Subj. Employers (000):	496	491	3

Extended Benefits	(Quarterly)	Past 12 Months
Extended Benefits (000):	\$0	\$0
EB First Payments:	0	0
EB Weeks Claimed:	0	0
EB Exhaustions:	0	0

Loans	Rank
Outstanding Loan Bal (000):	\$0 1
Loan per Cov Employee:	\$0 1
Loan as % of Total Wages*:	0 1

* Based on extrapolated wages for the most recent 12 months.

** Wages and Covered Employment lag the rest of the Data Summary information by six months

*** Regular programs include State UI, UCFE and UCX.

+ Refers to most recent calendar year. Fourth and first quarter issues publish measure based on extrapolated wages. Second and third quarter issues publish measure based on actual wages.

See glossary for data definitions

Note: Blank cells appearing in any section of this report indicates that information is unavailable.

UI Data Summary for North Carolina

CYQ: 2007.2

Benefits	(Quarterly)	Past 12 Months	Rank	High Value : Qtr		Low Value : Qtr	
Benefits Paid (000):	\$215,711	\$853,547	11	\$347,056	2002.1	\$5,433	1973.4
Initial Claims:	140,345	620,674	8	603,068	1982.1	39,534	1972.4
First Payments:	56,602	242,887	9	247,972	1975.1	13,856	1972.4
Weeks Claimed:	959,537	3,907,230	11	2,374,887	1975.1	177,061	1973.4
Wks Compensated:	807,049	3,265,587	12	1,945,163	1975.1	131,814	1973.4
Exhaustions:	24,402	96,461	9	39,392	1975.2	1,894	1973.4
Exhaustion Rate:		40.4%	10	40.5%	2006.4	12.5%	1989.1
Average Duration:		13.4	37	14.2	2004.2	7.5	1988.4
AWBA:	\$274.87	\$270.32	28	\$274.87	2007.2	\$38.77	1972.2
As % of AWW:	38.5		26				
Avg. Benefits per First Payment:		\$3,514					

Financial Information	Past 12 Months	Rank
State Revenues (000):	\$942,981	12
Total Wages (000)**:	\$38,596,498	13
Total Wages (Taxable Employers)(000)**:	\$31,510,841	13
Taxable Wages (000)**:	\$6,138,711	8
Avg. Weekly Wage**:	\$714.75	26
Avg. Tax Rate on Taxable Wages (%) **:	1.97	29
Avg. Tax Rate on Total Wages (%) **:	0.85	15
Calendar Yr Taxable Wage Base:	\$17,800	16
Trust Fund (TF) Balance (000):		
(Including Loans):	\$382,132	35
TF as % of Total Wages*:	0.31	49
Interest Earned (000):	\$3,615	35
Avg. High Cost Multiple +:	0.12	50
High Cost Multiple +:	0.07	50

Labor Force	(Quarterly)	Past 12 Mos	Rank
IUR (%):	1.9	1.9	17
TUR (%):	4.8	4.8	14
Total Unemp. (000):	217.3	217.1	9
Insured Unemployed (000) ***			
Regular Programs:	74.9	76.4	11
All Programs:	74.9	76.4	11
Reciency Rates (%) ***			
Regular Programs:	34	35	25
All Programs:	34	35	25
Covered Emp. (000)**:	3,979	3,900	10
Civ. Labor Force (000):	4,535	4,512	10
Subj. Employers (000):	199	195	11

Extended Benefits	(Quarterly)	Past 12 Months
Extended Benefits (000):	\$0	\$0
EB First Payments:	0	0
EB Weeks Claimed:	0	0
EB Exhaustions:	0	0

Loans	Rank
Outstanding Loan Bal (000):	\$0 1
Loan per Cov Employee:	\$0 1
Loan as % of Total Wages*:	0 1

* Based on extrapolated wages for the most recent 12 months.

** Wages and Covered Employment lag the rest of the Data Summary information by six months

*** Regular programs include State UI, UCFE and UCX.

+ Refers to most recent calendar year. Fourth and first quarter issues publish measure based on extrapolated wages. Second and third quarter issues publish measure based on actual wages.

See glossary for data definitions

Note: Blank cells appearing in any section of this report indicates that information is unavailable.

UI Data Summary for North Dakota

CYQ: 2007.2

Benefits	(Quarterly)	Past 12 Months	Rank	High Value : Qtr		Low Value : Qtr	
<u>Benefits Paid (000):</u>	\$7,976	\$40,933	51	\$23,730	1983.1	\$620	1971.3
<u>Initial Claims:</u>	4,399	28,173	51	19,325	1982.4	2,017	1971.3
<u>First Payments:</u>	1,970	14,015	51	11,508	1983.1	929	1971.3
<u>Weeks Claimed:</u>	35,577	182,302	50	179,165	1983.1	19,179	1971.3
<u>Wks Compensated:</u>	30,817	156,061	50	171,825	1983.1	14,351	1971.3
<u>Exhaustions:</u>	1,298	4,262	48	4,709	1983.2	382	1971.4
<u>Exhaustion Rate:</u>		31.3%	35	47.0%	1983.2	23.0%	1979.1
<u>Average Duration:</u>		11.1	52	15.9	1987.1	9.8	1997.2
<u>AWBA:</u>	\$260.81	\$264.16	32	\$274.53	2007.1	\$43.75	1971.3
As % of AWW:	44.0		7				
<u>Avg. Benefits per First Payment:</u>		\$2,921					

Financial Information	Past 12 Months	Rank
<u>State Revenues (000):</u>	\$55,804	50
<u>Total Wages (000)**:</u>	\$2,735,485	51
<u>Total Wages (Taxable Employers)(000)**:</u>	\$2,058,036	50
<u>Taxable Wages (000)**:</u>	\$523,755	48
<u>Avg. Weekly Wage**:</u>	\$593.03	49
<u>Avg. Tax Rate on Taxable Wages (%) **:</u>	1.32	47
<u>Avg. Tax Rate on Total Wages (%) **:</u>	0.72	24
<u>Calendar Yr Taxable Wage Base:</u>	\$21,300	12
<u>Trust Fund (TF) Balance (000):</u>		
(Including Loans):	\$115,009	50
<u>TF as % of Total Wages*:</u>	1.49	20
<u>Interest Earned (000):</u>	\$1,365	50
<u>Avg. High Cost Multiple +:</u>	0.75	27
<u>High Cost Multiple +:</u>	0.68	18

Labor Force	(Quarterly)	Past 12 Mos	Rank
<u>IUR (%):</u>	0.9	1.1	51
<u>TUR (%):</u>	3.4	3.3	41
<u>Total Unemp. (000):</u>	12.5	11.8	50
Insured Unemployed (000) ***			
<u>Regular Programs:</u>	2.9	3.7	50
<u>All Programs:</u>	2.9	3.7	50
Reciency Rates (%) ***			
<u>Regular Programs:</u>	23	31	46
<u>All Programs:</u>	23	31	46
<u>Covered Emp. (000)**:</u>	332	326	49
<u>Civ. Labor Force (000):</u>	368	362	48
<u>Subj. Employers (000):</u>	20	20	51

Extended Benefits	(Quarterly)	Past 12 Months
<u>Extended Benefits (000):</u>	\$0	\$0
EB First Payments:	0	0
EB Weeks Claimed:	0	0
EB Exhaustions:	0	0

Loans	Rank
<u>Outstanding Loan Bal (000):</u>	\$0 1
Loan per Cov Employee:	\$0 1
Loan as % of Total Wages*:	0 1

* Based on extrapolated wages for the most recent 12 months.

** Wages and Covered Employment lag the rest of the Data Summary information by six months

*** Regular programs include State UI, UCFE and UCX.

+ Refers to most recent calendar year. Fourth and first quarter issues publish measure based on extrapolated wages. Second and third quarter issues publish measure based on actual wages.

See glossary for data definitions

Note: Blank cells appearing in any section of this report indicates that information is unavailable.

UI Data Summary for Ohio

CYQ: 2007.2

Benefits	(Quarterly)	Past 12 Months	Rank	High Value : Qtr		Low Value : Qtr	
<u>Benefits Paid (000):</u>	\$283,152	\$1,188,840	8	\$479,209	2002.1	\$19,670	1973.3
<u>Initial Claims:</u>	126,235	626,667	11	491,161	1982.4	77,739	1973.2
<u>First Payments:</u>	51,174	276,352	10	262,818	1975.1	29,637	1973.2
<u>Weeks Claimed:</u>	1,199,977	5,032,133	8	3,509,353	1982.1	469,902	1973.3
<u>Wks Compensated:</u>	1,000,531	4,161,747	8	3,169,009	1982.1	351,318	1973.4
<u>Exhaustions:</u>	20,317	77,530	11	72,068	1982.3	6,345	1973.4
<u>Exhaustion Rate:</u>		28.2%	41	44.9%	1983.1	16.5%	2000.4
<u>Average Duration:</u>		15.1	15	18.7	1983.4	10.2	1974.1
<u>AWBA:</u>	\$287.09	\$290.09	19	\$293.06	2006.4	\$49.28	1971.2
As % of AWW:	39.1		23				
<u>Avg. Benefits per First Payment:</u>		\$4,302					

Financial Information	Past 12 Months	Rank
<u>State Revenues (000):</u>	\$1,102,105	10
<u>Total Wages (000)**:</u>	\$52,547,948	7
<u>Total Wages (Taxable Employers)(000)**:</u>	\$42,131,629	8
<u>Taxable Wages (000)**:</u>	\$3,867,755	10
<u>Avg. Weekly Wage**:</u>	\$735.22	23
<u>Avg. Tax Rate on Taxable Wages (%) **:</u>	2.63	14
<u>Avg. Tax Rate on Total Wages (%) **:</u>	0.68	29
<u>Calendar Yr Taxable Wage Base:</u>	\$9,000	29
<u>Trust Fund (TF) Balance (000):</u>		
(Including Loans):	\$585,841	26
<u>TF as % of Total Wages*:</u>	0.37	48
<u>Interest Earned (000):</u>	\$5,917	29
<u>Avg. High Cost Multiple +:</u>	0.14	49
<u>High Cost Multiple +:</u>	0.10	49

Labor Force	(Quarterly)	Past 12 Mos	Rank
<u>IUR (%):</u>	1.8	1.9	23
<u>TUR (%):</u>	5.7	5.5	5
<u>Total Unemp. (000):</u>	341.5	330.8	5
<u>Insured Unemployed (000) ***</u>			
<u>Regular Programs:</u>	93.9	98.6	8
<u>All Programs:</u>	93.9	98.6	8
<u>Reciency Rates (%) ***</u>			
<u>Regular Programs:</u>	28	30	36
<u>All Programs:</u>	28	30	36
<u>Covered Emp. (000)**:</u>	5,267	5,238	7
<u>Civ. Labor Force (000):</u>	5,997	5,967	7
<u>Subj. Employers (000):</u>	229	229	8

Extended Benefits	(Quarterly)	Past 12 Months
<u>Extended Benefits (000):</u>	\$0	\$0
EB First Payments:	0	0
EB Weeks Claimed:	0	0
EB Exhaustions:	0	0

Loans	Rank
<u>Outstanding Loan Bal (000):</u>	\$0 1
Loan per Cov Employee:	\$0 1
Loan as % of Total Wages*:	0 1

* Based on extrapolated wages for the most recent 12 months.

** Wages and Covered Employment lag the rest of the Data Summary information by six months

*** Regular programs include State UI, UCFE and UCX.

+ Refers to most recent calendar year. Fourth and first quarter issues publish measure based on extrapolated wages. Second and third quarter issues publish measure based on actual wages.

See glossary for data definitions

Note: Blank cells appearing in any section of this report indicates that information is unavailable.

UI Data Summary for **Oklahoma**

CYQ: **2007.2**

Benefits	(Quarterly)	Past 12 Months	Rank	High Value : Qtr		Low Value : Qtr	
Benefits Paid (000):	\$38,033	\$149,758	35	\$77,707	1983.1	\$5,871	1972.3
Initial Claims:	26,948	108,005	34	72,345	1982.3	19,985	2000.2
First Payments:	9,690	42,810	35	40,001	1982.4	7,273	1978.3
Weeks Claimed:	181,019	737,412	35	623,327	1983.1	130,917	1978.3
Wks Compensated:	154,694	627,503	35	552,703	1983.1	86,510	1978.3
Exhaustions:	3,969	15,729	36	22,782	1983.1	2,430	1998.4
Exhaustion Rate:		38.3%	14	59.8%	1983.2	24.7%	2000.4
Average Duration:		14.7	19	17.4	2004.2	10.3	1982.2
AWBA:	\$252.04	\$244.38	38	\$252.04	2007.2	\$14.70	1971.1
As % of AWW:	39.4		19				
Avg. Benefits per First Payment:		\$3,498					

Financial Information	Past 12 Months	Rank
State Revenues (000):	\$230,211	32
Total Wages (000)**:	\$12,852,929	31
Total Wages (Taxable Employers)(000)**:	\$10,894,626	31
Taxable Wages (000)**:	\$1,973,405	28
Avg. Weekly Wage**:	\$640.35	44
Avg. Tax Rate on Taxable Wages (%) **:	1.43	46
Avg. Tax Rate on Total Wages (%) **:	0.58	36
Calendar Yr Taxable Wage Base:	\$13,200	20
Trust Fund (TF) Balance (000):		
(Including Loans):	\$799,616	14
TF as % of Total Wages*:	1.87	15
Interest Earned (000):	\$9,488	13
Avg. High Cost Multiple +:	1.44	5
High Cost Multiple +:	1.32	4

Labor Force	(Quarterly)	Past 12 Mos	Rank
IUR (%):	1.0	1.0	48
TUR (%):	4.3	4.1	25
Total Unemp. (000):	75.9	70.6	30
Insured Unemployed (000) ***			
Regular Programs:	14.5	14.8	35
All Programs:	14.5	14.8	35
Reciency Rates (%) ***			
Regular Programs:	19	21	51
All Programs:	19	21	51
Covered Emp. (000)**:	1,485	1,461	29
Civ. Labor Force (000):	1,747	1,732	29
Subj. Employers (000):	81	80	29

Extended Benefits	(Quarterly)	Past 12 Months
Extended Benefits (000):	\$0	\$0
EB First Payments:	0	0
EB Weeks Claimed:	0	0
EB Exhaustions:	0	0

Loans	Rank
Outstanding Loan Bal (000):	\$0 1
Loan per Cov Employee:	\$0 1
Loan as % of Total Wages*:	0 1

* Based on extrapolated wages for the most recent 12 months.

** Wages and Covered Employment lag the rest of the Data Summary information by six months

*** Regular programs include State UI, UCFE and UCX.

+ Refers to most recent calendar year. Fourth and first quarter issues publish measure based on extrapolated wages. Second and third quarter issues publish measure based on actual wages.

See glossary for data definitions

Note: Blank cells appearing in any section of this report indicates that information is unavailable.

UI Data Summary for Oregon

CYQ: 2007.2

Benefits	(Quarterly)	Past 12 Months	Rank	High Value : Qtr		Low Value : Qtr	
				Value	Year	Value	Year
Benefits Paid (000):	\$126,546	\$499,083	18	\$234,369	2002.1	\$7,771	1972.3
Initial Claims:	74,931	324,120	17	153,754	2001.4	39,945	1972.3
First Payments:	28,230	129,175	18	61,610	2003.1	11,218	1972.3
Weeks Claimed:	526,234	2,130,028	18	1,050,912	1982.1	236,902	1972.3
Wks Compensated:	455,978	1,830,640	18	978,274	2003.1	171,876	1972.3
Exhaustions:	10,206	37,804	20	23,099	2002.2	2,889	1973.4
Exhaustion Rate:		30.1%	39	46.9%	2003.2	18.4%	1979.4
Average Duration:		14.2	25	18.0	2002.4	12.0	1980.2
AWBA:	\$283.54	\$278.18	22	\$284.15	2002.4	\$42.83	1971.2
As % of AWW:	39.1		22				
Avg. Benefits per First Payment:		\$3,864					

Financial Information	Past 12 Months	Rank
State Revenues (000):	\$680,595	15
Total Wages (000)**:	\$16,700,041	26
Total Wages (Taxable Employers)(000)**:	\$13,327,257	27
Taxable Wages (000)**:	\$4,504,705	15
Avg. Weekly Wage**:	\$725.01	25
Avg. Tax Rate on Taxable Wages (%) **:	2.26	23
Avg. Tax Rate on Total Wages (%) **:	1.35	4
Calendar Yr Taxable Wage Base:	\$29,000	5
Trust Fund (TF) Balance (000):		
(Including Loans):	\$1,811,160	5
TF as % of Total Wages*:	3.52	1
Interest Earned (000):	\$21,674	5
Avg. High Cost Multiple +:	1.38	7
High Cost Multiple +:	1.08	6

Labor Force	(Quarterly)	Past 12 Mos	Rank
IUR (%):	2.5	2.5	9
TUR (%):	5.0	5.3	12
Total Unemp. (000):	96.2	101.4	25
Insured Unemployed (000) ***			
Regular Programs:	41.5	42.3	18
All Programs:	41.5	42.3	18
Reciency Rates (%) ***			
Regular Programs:	43	42	12
All Programs:	43	42	12
Covered Emp. (000)**:	1,698	1,671	27
Civ. Labor Force (000):	1,922	1,916	27
Subj. Employers (000):	113	111	23

Extended Benefits	(Quarterly)	Past 12 Months
Extended Benefits (000):	\$0	\$0
EB First Payments:	0	0
EB Weeks Claimed:	0	0
EB Exhaustions:	0	0

Loans	Rank
Outstanding Loan Bal (000):	\$0 1
Loan per Cov Employee:	\$0 1
Loan as % of Total Wages*:	0 1

* Based on extrapolated wages for the most recent 12 months.

** Wages and Covered Employment lag the rest of the Data Summary information by six months

*** Regular programs include State UI, UCFE and UCX.

+ Refers to most recent calendar year. Fourth and first quarter issues publish measure based on extrapolated wages. Second and third quarter issues publish measure based on actual wages.

See glossary for data definitions

Note: Blank cells appearing in any section of this report indicates that information is unavailable.

UI Data Summary for **Pennsylvania**

CYQ: 2007.2

Benefits	(Quarterly)	Past 12 Months	Rank	High Value : Qtr		Low Value : Qtr	
Benefits Paid (000):	\$527,847	\$2,171,196	3	\$844,154	2003.1	\$65,467	1971.3
Initial Claims:	278,761	1,195,919	2	595,313	1982.4	188,957	2000.3
First Payments:	95,282	456,350	2	294,655	1975.1	70,828	1973.2
Weeks Claimed:	2,003,936	8,546,311	3	4,645,096	1983.1	1,301,090	1988.4
Wks Compensated:	1,748,641	7,391,188	3	4,309,149	1983.1	1,122,944	1988.4
Exhaustions:	32,090	131,990	5	77,689	1983.1	15,144	1973.4
Exhaustion Rate:		29.5%	40	38.3%	1994.1	16.7%	1980.1
Average Duration:		16.2	10	20.9	1983.3	13.5	1979.3
AWBA:	\$326.12	\$313.49	7	\$326.12	2007.2	\$50.64	1971.3
As % of AWW:	41.4		12				
Avg. Benefits per First Payment:		\$4,758					

Financial Information	Past 12 Months	Rank
State Revenues (000):	\$2,347,048	4
Total Wages (000)**:	\$60,185,708	6
Total Wages (Taxable Employers)(000)**:	\$47,471,300	6
Taxable Wages (000)**:	\$3,554,883	12
Avg. Weekly Wage**:	\$788.36	17
Avg. Tax Rate on Taxable Wages (%) **:	5.39	1
Avg. Tax Rate on Total Wages (%) **:	1.19	5
Calendar Yr Taxable Wage Base:	\$8,000	41
Trust Fund (TF) Balance (000):		
(Including Loans):	\$1,778,233	6
TF as % of Total Wages*:	0.99	30
Interest Earned (000):	\$18,818	6
Avg. High Cost Multiple +:	0.28	43
High Cost Multiple +:	0.23	39

Labor Force	(Quarterly)	Past 12 Mos	Rank
IUR (%):	2.8	3.0	4
TUR (%):	4.1	4.4	33
Total Unemp. (000):	255.1	278.4	8
Insured Unemployed (000) ***			
Regular Programs:	153.7	164.7	3
All Programs:	153.7	164.7	3
Reciency Rates (%) ***			
Regular Programs:	60	59	1
All Programs:	60	59	1
Covered Emp. (000)**:	5,569	5,502	6
Civ. Labor Force (000):	6,264	6,300	6
Subj. Employers (000):	288	286	6

Extended Benefits	(Quarterly)	Past 12 Months
Extended Benefits (000):	\$0	\$0
EB First Payments:	0	0
EB Weeks Claimed:	0	0
EB Exhaustions:	0	0

Loans	Rank
Outstanding Loan Bal (000):	\$0 1
Loan per Cov Employee:	\$0 1
Loan as % of Total Wages*:	0 1

* Based on extrapolated wages for the most recent 12 months.

** Wages and Covered Employment lag the rest of the Data Summary information by six months

*** Regular programs include State UI, UCFE and UCX.

+ Refers to most recent calendar year. Fourth and first quarter issues publish measure based on extrapolated wages. Second and third quarter issues publish measure based on actual wages.

See glossary for data definitions

Note: Blank cells appearing in any section of this report indicates that information is unavailable.

UI Data Summary for Puerto Rico

CYQ: 2007.2

Benefits	(Quarterly)	Past 12 Months	Rank	High Value : Qtr		Low Value : Qtr	
<u>Benefits Paid (000):</u>	\$48,862	\$199,810	33	\$67,074	2001.3	\$9,234	1971.2
<u>Initial Claims:</u>	42,885	165,192	28	132,965	2006.2	34,324	2006.4
<u>First Payments:</u>	25,616	99,040	20	46,272	1998.4	6,319	1984.1
<u>Weeks Claimed:</u>	504,311	2,067,904	19	922,160	1975.2	341,054	1988.2
<u>Wks Compensated:</u>	451,002	1,865,914	20	671,786	1994.2	198,213	1983.2
<u>Exhaustions:</u>	11,837	45,955	17	26,319	1976.3	3,103	1983.2
<u>Exhaustion Rate:</u>		45.5%	3	98.6%	1984.3	30.3%	1982.2
<u>Average Duration:</u>		18.8	2	39.4	1984.3	13.8	1989.4
<u>AWBA:</u>	\$111.88	\$110.43	53	\$111.88	2007.2	\$29.70	1971.1
As % of AWW:	25.0		52				
<u>Avg. Benefits per First Payment:</u>		\$2,017					

Financial Information	Past 12 Months	Rank
<u>State Revenues (000):</u>	\$189,747	36
<u>Total Wages (000)**:</u>	\$6,477,038	40
<u>Total Wages (Taxable Employers)(000)**:</u>	\$4,374,135	43
<u>Taxable Wages (000)**:</u>	\$524,543	44
<u>Avg. Weekly Wage**:</u>	\$447.10	53
<u>Avg. Tax Rate on Taxable Wages (%) **:</u>	3.24	8
<u>Avg. Tax Rate on Total Wages (%) **:</u>	1.11	8
<u>Calendar Yr Taxable Wage Base:</u>	\$7,000	49
<u>Trust Fund (TF) Balance (000):</u>		
(Including Loans):	\$542,010	29
<u>TF as % of Total Wages*:</u>	3.38	3
<u>Interest Earned (000):</u>	\$6,323	28
<u>Avg. High Cost Multiple +:</u>	1.02	19
<u>High Cost Multiple +:</u>	0.74	15

Labor Force	(Quarterly)	Past 12 Mos	Rank
<u>IUR (%):</u>	3.9	4.0	2
<u>TUR (%):</u>	10.7	10.4	1
<u>Total Unemp. (000):</u>	150.3	146.5	14
Insured Unemployed (000) ***			
<u>Regular Programs:</u>	40.4	41.2	19
<u>All Programs:</u>	40.4	41.2	19
Reciency Rates (%) ***			
<u>Regular Programs:</u>	27	28	38
<u>All Programs:</u>	27	28	38
<u>Covered Emp. (000)**:</u>	1,026	1,020	36
<u>Civ. Labor Force (000):</u>	1,405	1,409	32
<u>Subj. Employers (000):</u>	68	66	33

Extended Benefits	(Quarterly)	Past 12 Months
<u>Extended Benefits (000):</u>	\$0	\$0
EB First Payments:	0	0
EB Weeks Claimed:	0	0
EB Exhaustions:	0	0

Loans	Rank
<u>Outstanding Loan Bal (000):</u>	\$0 1
Loan per Cov Employee:	\$0 1
Loan as % of Total Wages*:	0 1

* Based on extrapolated wages for the most recent 12 months.

** Wages and Covered Employment lag the rest of the Data Summary information by six months

*** Regular programs include State UI, UCFE and UCX.

+ Refers to most recent calendar year. Fourth and first quarter issues publish measure based on extrapolated wages. Second and third quarter issues publish measure based on actual wages.

See glossary for data definitions

Note: Blank cells appearing in any section of this report indicates that information is unavailable.

UI Data Summary for Rhode Island

CYQ: 2007.2

Benefits	(Quarterly)	Past 12 Months	Rank	High Value : Qtr		Low Value : Qtr	
<u>Benefits Paid (000):</u>	\$49,866	\$201,774	32	\$68,991	2007.1	\$6,858	1972.4
<u>Initial Claims:</u>	19,162	78,209	37	102,513	1978.2	14,082	1989.1
<u>First Payments:</u>	7,405	38,844	38	51,557	1978.2	6,427	1988.2
<u>Weeks Claimed:</u>	159,796	665,413	36	508,725	1975.1	104,435	1987.4
<u>Wks Compensated:</u>	143,974	593,778	36	444,513	1975.1	85,635	1987.4
<u>Exhaustions:</u>	3,929	14,038	37	12,648	1975.2	1,870	1987.4
<u>Exhaustion Rate:</u>		37.4%	16	51.5%	1994.1	18.6%	1979.1
<u>Average Duration:</u>		15.3	14	19.5	1976.1	9.2	1979.1
<u>AWBA:</u>	\$356.13	\$348.62	4	\$357.00	2007.1	\$54.10	1971.3
As % of AWW:	46.4		2				
<u>Avg. Benefits per First Payment:</u>		\$5,194					

Financial Information	Past 12 Months	Rank
<u>State Revenues (000):</u>	\$201,150	34
<u>Total Wages (000)**:</u>	\$5,015,129	46
<u>Total Wages (Taxable Employers)(000)**:</u>	\$3,742,578	46
<u>Taxable Wages (000)**:</u>	\$646,251	41
<u>Avg. Weekly Wage**:</u>	\$766.96	19
<u>Avg. Tax Rate on Taxable Wages (%) **:</u>	3.34	7
<u>Avg. Tax Rate on Total Wages (%) **:</u>	1.37	3
<u>Calendar Yr Taxable Wage Base:</u>	\$14,000	19
<u>Trust Fund (TF) Balance (000):</u>		
(Including Loans):	\$180,224	47
<u>TF as % of Total Wages*:</u>	1.25	22
<u>Interest Earned (000):</u>	\$2,076	47
<u>Avg. High Cost Multiple +:</u>	0.47	33
<u>High Cost Multiple +:</u>	0.32	35

Labor Force	(Quarterly)	Past 12 Mos	Rank
<u>IUR (%):</u>	2.5	2.7	6
<u>TUR (%):</u>	4.6	4.8	17
<u>Total Unemp. (000):</u>	26.5	27.8	42
<u>Insured Unemployed (000) ***</u>			
<u>Regular Programs:</u>	12.1	12.6	37
<u>All Programs:</u>	12.1	12.6	37
<u>Reciency Rates (%) ***</u>			
<u>Regular Programs:</u>	45	45	9
<u>All Programs:</u>	45	45	9
<u>Covered Emp. (000)**:</u>	479	471	45
<u>Civ. Labor Force (000):</u>	576	578	44
<u>Subj. Employers (000):</u>	34	34	44

Extended Benefits	(Quarterly)	Past 12 Months
<u>Extended Benefits (000):</u>	\$0	\$0
EB First Payments:	0	0
EB Weeks Claimed:	0	0
EB Exhaustions:	0	0

Loans	Rank
<u>Outstanding Loan Bal (000):</u>	\$0 1
Loan per Cov Employee:	\$0 1
Loan as % of Total Wages*:	0 1

* Based on extrapolated wages for the most recent 12 months.

** Wages and Covered Employment lag the rest of the Data Summary information by six months

*** Regular programs include State UI, UCFE and UCX.

+ Refers to most recent calendar year. Fourth and first quarter issues publish measure based on extrapolated wages. Second and third quarter issues publish measure based on actual wages.

See glossary for data definitions

Note: Blank cells appearing in any section of this report indicates that information is unavailable.

UI Data Summary for South Carolina

CYQ: 2007.2

Benefits	(Quarterly)	Past 12 Months	Rank	High Value : Qtr		Low Value : Qtr	
<u>Benefits Paid (000):</u>	\$79,929	\$335,146	24	\$123,120	2002.1	\$4,284	1973.3
<u>Initial Claims:</u>	64,600	297,354	19	259,218	1982.1	17,287	1973.2
<u>First Payments:</u>	24,311	113,415	21	132,837	1975.1	6,914	1972.4
<u>Weeks Claimed:</u>	455,290	1,908,525	22	1,140,593	1975.1	119,478	1973.2
<u>Wks Compensated:</u>	361,530	1,529,914	22	942,398	1975.1	93,407	1973.3
<u>Exhaustions:</u>	10,771	41,420	18	19,459	1975.2	2,196	1973.4
<u>Exhaustion Rate:</u>		36.9%	19	49.1%	1975.2	17.7%	1990.2
<u>Average Duration:</u>		13.5	33	14.7	1976.1	7.9	1975.1
<u>AWBA:</u>	\$227.60	\$226.19	44	\$227.60	2007.2	\$41.67	1971.1
As % of AWW:	34.9		34				
<u>Avg. Benefits per First Payment:</u>		\$2,955					

Financial Information	Past 12 Months	Rank
<u>State Revenues (000):</u>	\$291,415	28
<u>Total Wages (000)**:</u>	\$16,408,221	27
<u>Total Wages (Taxable Employers)(000)**:</u>	\$13,426,213	26
<u>Taxable Wages (000)**:</u>	\$1,277,087	32
<u>Avg. Weekly Wage**:</u>	\$652.80	41
<u>Avg. Tax Rate on Taxable Wages (%) **:</u>	2.21	25
<u>Avg. Tax Rate on Total Wages (%) **:</u>	0.55	38
<u>Calendar Yr Taxable Wage Base:</u>	\$7,000	49
<u>Trust Fund (TF) Balance (000):</u>		
(Including Loans):	\$265,462	39
<u>TF as % of Total Wages*:</u>	0.51	44
<u>Interest Earned (000):</u>	\$3,090	37
<u>Avg. High Cost Multiple +:</u>	0.34	41
<u>High Cost Multiple +:</u>	0.17	47

Labor Force	(Quarterly)	Past 12 Mos	Rank
<u>IUR (%):</u>	2.0	2.1	16
<u>TUR (%):</u>	5.4	6.2	7
<u>Total Unemp. (000):</u>	116.9	133.4	21
Insured Unemployed (000) ***			
<u>Regular Programs:</u>	36.7	38.5	21
<u>All Programs:</u>	36.7	38.5	21
Reciency Rates (%) ***			
<u>Regular Programs:</u>	31	29	30
<u>All Programs:</u>	31	29	30
<u>Covered Emp. (000)**:</u>	1,851	1,827	24
<u>Civ. Labor Force (000):</u>	2,163	2,148	24
<u>Subj. Employers (000):</u>	100	99	25

Extended Benefits	(Quarterly)	Past 12 Months
<u>Extended Benefits (000):</u>	\$0	\$0
EB First Payments:	0	0
EB Weeks Claimed:	0	0
EB Exhaustions:	0	0

Loans	Rank
<u>Outstanding Loan Bal (000):</u>	\$0 1
Loan per Cov Employee:	\$0 1
Loan as % of Total Wages*:	0 1

* Based on extrapolated wages for the most recent 12 months.

** Wages and Covered Employment lag the rest of the Data Summary information by six months

*** Regular programs include State UI, UCFE and UCX.

+ Refers to most recent calendar year. Fourth and first quarter issues publish measure based on extrapolated wages. Second and third quarter issues publish measure based on actual wages.

See glossary for data definitions

Note: Blank cells appearing in any section of this report indicates that information is unavailable.

UI Data Summary for South Dakota

CYQ: 2007.2

Benefits	(Quarterly)	Past 12 Months	Rank	High Value : Qtr		Low Value : Qtr	
<u>Benefits Paid (000):</u>	\$3,995	\$19,678	52	\$10,598	2003.1	\$448	1971.3
<u>Initial Claims:</u>	4,102	18,159	52	13,637	1978.4	2,200	1971.2
<u>First Payments:</u>	1,359	7,985	52	6,177	1979.1	1,098	1971.2
<u>Weeks Claimed:</u>	22,696	109,949	52	88,801	1979.1	16,839	1971.3
<u>Wks Compensated:</u>	18,283	89,233	52	66,277	1979.1	12,003	1971.3
<u>Exhaustions:</u>	235	878	52	1,370	1975.2	105	2000.3
<u>Exhaustion Rate:</u>		11.2%	53	33.5%	1975.2	7.3%	2000.4
<u>Average Duration:</u>		11.2	51	14.6	1983.3	9.8	2001.1
<u>AWBA:</u>	\$223.49	\$224.97	46	\$233.03	2007.1	\$39.50	1971.3
As % of AWW:	39.1		20				
<u>Avg. Benefits per First Payment:</u>		\$2,464					

Financial Information	Past 12 Months	Rank
<u>State Revenues (000):</u>	\$23,392	52
<u>Total Wages (000)**:</u>	\$2,954,531	49
<u>Total Wages (Taxable Employers)(000)**:</u>	\$2,311,868	49
<u>Taxable Wages (000)**:</u>	\$236,728	51
<u>Avg. Weekly Wage**:</u>	\$570.97	52
<u>Avg. Tax Rate on Taxable Wages (%) **:</u>	0.80	52
<u>Avg. Tax Rate on Total Wages (%) **:</u>	0.22	52
<u>Calendar Yr Taxable Wage Base:</u>	\$8,500	34
<u>Trust Fund (TF) Balance (000):</u>		
(Including Loans):	\$20,281	53
<u>TF as % of Total Wages*:</u>	0.23	50
<u>Interest Earned (000):</u>	\$215	53
<u>Avg. High Cost Multiple +:</u>	0.28	44
<u>High Cost Multiple +:</u>	0.22	43

Labor Force	(Quarterly)	Past 12 Mos	Rank
<u>IUR (%):</u>	0.5	0.6	53
<u>TUR (%):</u>	3.0	3.2	47
<u>Total Unemp. (000):</u>	13.3	14.1	49
Insured Unemployed (000) ***			
<u>Regular Programs:</u>	2.0	2.3	52
<u>All Programs:</u>	2.0	2.3	52
Reciency Rates (%) ***			
<u>Regular Programs:</u>	15	17	52
<u>All Programs:</u>	15	17	52
<u>Covered Emp. (000)**:</u>	376	373	48
<u>Civ. Labor Force (000):</u>	440	435	47
<u>Subj. Employers (000):</u>	25	25	48

Extended Benefits	(Quarterly)	Past 12 Months
<u>Extended Benefits (000):</u>	\$0	\$0
EB First Payments:	0	0
EB Weeks Claimed:	0	0
EB Exhaustions:	0	0

Loans	Rank
<u>Outstanding Loan Bal (000):</u>	\$0 1
Loan per Cov Employee:	\$0 1
Loan as % of Total Wages*:	0 1

* Based on extrapolated wages for the most recent 12 months.

** Wages and Covered Employment lag the rest of the Data Summary information by six months

*** Regular programs include State UI, UCFE and UCX.

+ Refers to most recent calendar year. Fourth and first quarter issues publish measure based on extrapolated wages. Second and third quarter issues publish measure based on actual wages.

See glossary for data definitions

Note: Blank cells appearing in any section of this report indicates that information is unavailable.

UI Data Summary for Tennessee

CYQ: 2007.2

Benefits	(Quarterly)	Past 12 Months	Rank	High Value : Qtr		Low Value : Qtr	
Benefits Paid (000):	\$103,779	\$414,627	19	\$193,223	2002.1	\$7,536	1972.4
Initial Claims:	70,985	313,366	18	279,757	1982.1	27,840	1973.2
First Payments:	32,497	144,495	16	121,148	1975.1	14,013	1972.4
Weeks Claimed:	495,826	2,040,139	20	1,526,707	1975.1	231,044	1972.4
Wks Compensated:	477,970	1,947,244	17	1,189,643	1975.1	170,977	1972.4
Exhaustions:	12,134	47,950	16	29,480	1975.2	4,037	1973.4
Exhaustion Rate:		33.6%	27	40.2%	2003.4	19.6%	1984.3
Average Duration:		13.5	34	16.6	1976.1	8.8	1990.4
AWBA:	\$222.83	\$218.92	47	\$222.83	2007.2	\$41.43	1971.1
As % of AWW:	31.3		43				
Avg. Benefits per First Payment:		\$2,869					

Financial Information	Past 12 Months	Rank
State Revenues (000):	\$362,714	25
Total Wages (000)**:	\$27,091,906	20
Total Wages (Taxable Employers)(000)**:	\$22,842,684	18
Taxable Wages (000)**:	\$1,877,676	26
Avg. Weekly Wage**:	\$712.33	27
Avg. Tax Rate on Taxable Wages (%) **:	1.93	30
Avg. Tax Rate on Total Wages (%) **:	0.43	45
Calendar Yr Taxable Wage Base:	\$7,000	49
Trust Fund (TF) Balance (000):		
(Including Loans):	\$667,377	20
TF as % of Total Wages*:	0.78	37
Interest Earned (000):	\$7,838	18
Avg. High Cost Multiple +:	0.56	31
High Cost Multiple +:	0.35	33

Labor Force	(Quarterly)	Past 12 Mos	Rank
IUR (%):	1.5	1.5	33
TUR (%):	4.3	4.8	29
Total Unemp. (000):	129.3	145.4	19
Insured Unemployed (000) ***			
Regular Programs:	39.4	40.6	20
All Programs:	39.4	40.6	20
Reciency Rates (%) ***			
Regular Programs:	31	28	33
All Programs:	31	28	33
Covered Emp. (000)**:	2,722	2,684	17
Civ. Labor Force (000):	3,034	3,021	18
Subj. Employers (000):	115	114	22

Extended Benefits	(Quarterly)	Past 12 Months
Extended Benefits (000):	\$0	\$0
EB First Payments:	0	0
EB Weeks Claimed:	0	0
EB Exhaustions:	0	0

Loans	Rank
Outstanding Loan Bal (000):	\$0 1
Loan per Cov Employee:	\$0 1
Loan as % of Total Wages*:	0 1

* Based on extrapolated wages for the most recent 12 months.

** Wages and Covered Employment lag the rest of the Data Summary information by six months

*** Regular programs include State UI, UCFE and UCX.

+ Refers to most recent calendar year. Fourth and first quarter issues publish measure based on extrapolated wages. Second and third quarter issues publish measure based on actual wages.

See glossary for data definitions

Note: Blank cells appearing in any section of this report indicates that information is unavailable.

UI Data Summary for Texas

CYQ: 2007.2

Benefits	(Quarterly)	Past 12 Months	Rank	High Value : Qtr		Low Value : Qtr	
<u>Benefits Paid (000):</u>	\$269,872	\$1,114,838	9	\$592,800	2002.1	\$15,273	1973.4
<u>Initial Claims:</u>	160,982	633,363	4	292,684	2001.4	59,692	1973.3
<u>First Payments:</u>	72,217	295,572	5	148,987	2001.4	24,909	1973.2
<u>Weeks Claimed:</u>	1,140,617	4,798,331	9	2,704,288	2002.1	377,514	1973.3
<u>Wks Compensated:</u>	972,594	4,142,502	9	2,360,139	2002.1	306,120	1973.4
<u>Exhaustions:</u>	25,317	110,510	8	112,555	2002.1	9,367	1973.4
<u>Exhaustion Rate:</u>		37.2%	18	67.2%	2002.1	29.7%	1982.2
<u>Average Duration:</u>		14.0	29	17.0	2004.2	10.7	1975.1
<u>AWBA:</u>	\$286.74	\$278.40	20	\$286.74	2007.2	\$40.91	1971.3
As % of AWW:	35.4		33				
<u>Avg. Benefits per First Payment:</u>		\$3,772					

Financial Information	Past 12 Months	Rank
<u>State Revenues (000):</u>	\$1,158,681	9
<u>Total Wages (000)**:</u>	\$111,548,772	3
<u>Total Wages (Taxable Employers)(000)**:</u>	\$95,308,875	2
<u>Taxable Wages (000)**:</u>	\$9,276,022	2
<u>Avg. Weekly Wage**:</u>	\$810.00	14
<u>Avg. Tax Rate on Taxable Wages (%) **:</u>	2.27	22
<u>Avg. Tax Rate on Total Wages (%) **:</u>	0.55	37
<u>Calendar Yr Taxable Wage Base:</u>	\$9,000	29
<u>Trust Fund (TF) Balance (000):</u>		
(Including Loans):	\$2,121,087	4
<u>TF as % of Total Wages*:</u>	0.58	41
<u>Interest Earned (000):</u>	\$26,221	4
<u>Avg. High Cost Multiple +:</u>	0.39	38
<u>High Cost Multiple +:</u>	0.36	31

Labor Force	(Quarterly)	Past 12 Mos	Rank
<u>IUR (%):</u>	0.9	1.0	49
<u>TUR (%):</u>	4.1	4.5	32
<u>Total Unemp. (000):</u>	475.7	520.0	2
Insured Unemployed (000) ***			
<u>Regular Programs:</u>	93.6	99.0	9
<u>All Programs:</u>	93.6	99.0	9
Reciency Rates (%) ***			
<u>Regular Programs:</u>	20	19	50
<u>All Programs:</u>	20	19	50
<u>Covered Emp. (000)**:</u>	9,917	9,740	2
<u>Civ. Labor Force (000):</u>	11,535	11,547	2
<u>Subj. Employers (000):</u>	430	426	4

Extended Benefits	(Quarterly)	Past 12 Months
<u>Extended Benefits (000):</u>	\$0	\$0
EB First Payments:	0	0
EB Weeks Claimed:	0	0
EB Exhaustions:	0	0

Loans	Rank
<u>Outstanding Loan Bal (000):</u>	\$0 1
Loan per Cov Employee:	\$0 1
Loan as % of Total Wages*:	0 1

* Based on extrapolated wages for the most recent 12 months.

** Wages and Covered Employment lag the rest of the Data Summary information by six months

*** Regular programs include State UI, UCFE and UCX.

+ Refers to most recent calendar year. Fourth and first quarter issues publish measure based on extrapolated wages. Second and third quarter issues publish measure based on actual wages.

See glossary for data definitions

Note: Blank cells appearing in any section of this report indicates that information is unavailable.

UI Data Summary for Utah

CYQ: 2007.2

Benefits	(Quarterly)	Past 12 Months	Rank	<u>High Value : Qtr</u>		<u>Low Value : Qtr</u>	
Benefits Paid (000):	\$20,027	\$89,303	47	\$79,889	2002.1	\$3,256	1973.3
Initial Claims:	12,380	55,058	44	38,001	1982.4	10,343	1973.2
First Payments:	4,785	23,428	46	20,398	2001.4	4,234	2006.3
Weeks Claimed:	84,830	386,541	47	398,806	1983.1	78,788	1973.3
Wks Compensated:	69,594	311,661	48	307,666	1983.1	60,361	1973.3
Exhaustions:	1,775	7,422	46	8,568	1983.1	1,303	1973.3
Exhaustion Rate:		32.4%	29	46.6%	1983.2	20.5%	1978.3
Average Duration:		13.3	40	16.6	1983.3	10.7	1996.3
AWBA:	\$294.60	\$284.79	15	\$294.60	2007.2	\$44.14	1971.2
As % of AWW:	44.4		4				
Avg. Benefits per First Payment:		\$3,812					

Financial Information	Past 12 Months	Rank
State Revenues (000):	\$226,658	33
Total Wages (000)**:	\$10,795,546	33
Total Wages (Taxable Employers)(000)**:	\$9,015,913	33
Taxable Wages (000)**:	\$2,870,258	27
Avg. Weekly Wage**:	\$663.94	39
Avg. Tax Rate on Taxable Wages (%) **:	1.31	48
Avg. Tax Rate on Total Wages (%) **:	0.75	23
Calendar Yr Taxable Wage Base:	\$25,400	7
Trust Fund (TF) Balance (000):		
(Including Loans):	\$767,292	16
TF as % of Total Wages*:	2.26	14
Interest Earned (000):	\$9,100	16
Avg. High Cost Multiple +:	1.35	11
High Cost Multiple +:	1.08	7

Labor Force	(Quarterly)	Past 12 Mos	Rank
IUR (%):	0.6	0.7	52
TUR (%):	2.5	2.6	50
Total Unemp. (000):	33.8	34.6	38
Insured Unemployed (000) ***			
Regular Programs:	6.9	8.0	45
All Programs:	6.9	8.0	45
Reciency Rates (%) ***			
Regular Programs:	20	23	49
All Programs:	20	23	49
Covered Emp. (000)**:	1,164	1,135	33
Civ. Labor Force (000):	1,343	1,330	34
Subj. Employers (000):	69	68	32

Extended Benefits	(Quarterly)	Past 12 Months
Extended Benefits (000):	\$0	\$0
EB First Payments:	0	0
EB Weeks Claimed:	0	0
EB Exhaustions:	0	0

Loans	Rank
Outstanding Loan Bal (000):	1
Loan per Cov Employee:	1
Loan as % of Total Wages*:	1

* Based on extrapolated wages for the most recent 12 months.

** Wages and Covered Employment lag the rest of the Data Summary information by six months

*** Regular programs include State UI, UCFE and UCX.

+ Refers to most recent calendar year. Fourth and first quarter issues publish measure based on extrapolated wages. Second and third quarter issues publish measure based on actual wages.

See glossary for data definitions

Note: Blank cells appearing in any section of this report indicates that information is unavailable.

UI Data Summary for **Vermont**

CYQ: 2007.2

Benefits	(Quarterly)	Past 12 Months	Rank	High Value : Qtr		Low Value : Qtr	
Benefits Paid (000):	\$23,029	\$89,261	44	\$35,804	2003.1	\$2,018	1973.3
Initial Claims:	10,127	41,804	47	21,356	1982.4	4,424	1988.3
First Payments:	5,015	22,624	45	11,432	1991.1	2,057	1988.3
Weeks Claimed:	90,616	352,188	44	172,983	1991.1	34,974	1988.3
Wks Compensated:	84,252	327,246	44	154,357	1991.1	29,653	1988.3
Exhaustions:	1,337	4,162	47	2,755	1975.3	400	1989.1
Exhaustion Rate:		18.8%	51	37.4%	1976.1	11.8%	2000.4
Average Duration:		14.5	22	19.1	1976.1	11.4	1989.4
AWBA:	\$283.22	\$282.41	23	\$293.90	2007.1	\$53.47	1971.1
As % of AWW:	41.9		8				
Avg. Benefits per First Payment:		\$3,945					

Financial Information	Past 12 Months	Rank
State Revenues (000):	\$62,633	49
Total Wages (000)**:	\$2,729,479	50
Total Wages (Taxable Employers)(000)**:	\$2,014,106	52
Taxable Wages (000)**:	\$185,650	52
Avg. Weekly Wage**:	\$675.29	36
Avg. Tax Rate on Taxable Wages (%) **:	2.52	17
Avg. Tax Rate on Total Wages (%) **:	0.67	33
Calendar Yr Taxable Wage Base:	\$8,000	41
Trust Fund (TF) Balance (000):		
(Including Loans):	\$183,544	46
TF as % of Total Wages*:	2.39	12
Interest Earned (000):	\$2,170	45
Avg. High Cost Multiple +:	1.36	9
High Cost Multiple +:	0.81	13

Labor Force	(Quarterly)	Past 12 Mos	Rank
IUR (%):	2.2	2.2	12
TUR (%):	3.9	3.8	34
Total Unemp. (000):	14.1	13.7	48
Insured Unemployed (000) ***			
Regular Programs:	6.7	6.6	46
All Programs:	6.7	6.6	46
Reciency Rates (%) ***			
Regular Programs:	47	48	7
All Programs:	47	48	7
Covered Emp. (000)**:	301	297	50
Civ. Labor Force (000):	360	362	49
Subj. Employers (000):	22	22	49

Extended Benefits	(Quarterly)	Past 12 Months
Extended Benefits (000):	\$0	\$0
EB First Payments:	0	0
EB Weeks Claimed:	0	0
EB Exhaustions:	0	0

Loans	Rank
Outstanding Loan Bal (000):	\$0 1
Loan per Cov Employee:	\$0 1
Loan as % of Total Wages*:	0 1

* Based on extrapolated wages for the most recent 12 months.

** Wages and Covered Employment lag the rest of the Data Summary information by six months

*** Regular programs include State UI, UCFE and UCX.

+ Refers to most recent calendar year. Fourth and first quarter issues publish measure based on extrapolated wages. Second and third quarter issues publish measure based on actual wages.

See glossary for data definitions

Note: Blank cells appearing in any section of this report indicates that information is unavailable.

UI Data Summary for Virgin Islands

CYQ: 2007.2

Benefits	(Quarterly)	Past 12 Months	Rank	High Value : Qtr		Low Value : Qtr	
				Value	Year	Value	Year
Benefits Paid (000):	\$2,000	\$6,743	53	\$21,838	2002.4	\$277	1988.1
Initial Claims:	788	2,915	53	3,877	1995.4	332	2000.1
First Payments:	437	1,739	53	3,838	1995.4	107	1978.1
Weeks Claimed:	7,492	28,271	53	25,858	1994.1	215	1974.3
Wks Compensated:	6,775	24,782	53	37,242	1995.4	2,660	1988.1
Exhaustions:	164	562	53	1,170	1994.2	51	1978.1
Exhaustion Rate:		40.4%	12	70.6%	2003.3	20.5%	1991.1
Average Duration:		14.3	24	41.3	1978.1	10.9	1991.1
AWBA:	\$310.38	\$289.98	9	\$310.38	2007.2	\$62.61	1978.4
As % of AWW:	46.4		3				
Avg. Benefits per First Payment:		\$3,878					

Financial Information	Past 12 Months	Rank
State Revenues (000):	\$1,492	53
Total Wages (000)**:	\$400,638	53
Total Wages (Taxable Employers)(000)**:	\$267,391	53
Taxable Wages (000)**:	\$92,298	53
Avg. Weekly Wage**:	\$668.67	38
Avg. Tax Rate on Taxable Wages (%) **:	0.28	53
Avg. Tax Rate on Total Wages (%) **:	0.16	53
Calendar Yr Taxable Wage Base:	\$20,500	13
Trust Fund (TF) Balance (000):		
(Including Loans):	\$26,681	52
TF as % of Total Wages*:	2.54	11
Interest Earned (000):	\$332	52
Avg. High Cost Multiple +:	1.14	12
High Cost Multiple +:	0.99	8

Labor Force	(Quarterly)	Past 12 Mos	Rank
IUR (%):	1.1	1.1	36
TUR (%):			
Total Unemp. (000):			
Insured Unemployed (000) ***			
Regular Programs:	0.5	0.5	53
All Programs:	0.5	0.5	53
Reciency Rates (%) ***			
Regular Programs:			
All Programs:			
Covered Emp. (000)**:	44	44	53
Civ. Labor Force (000):			
Subj. Employers (000):	3	3	53

Extended Benefits	(Quarterly)	Past 12 Months
Extended Benefits (000):	\$0	\$0
EB First Payments:	0	0
EB Weeks Claimed:	0	0
EB Exhaustions:	0	0

Loans	Rank
Outstanding Loan Bal (000):	\$0 1
Loan per Cov Employee:	\$0 1
Loan as % of Total Wages*:	0 1

* Based on extrapolated wages for the most recent 12 months.

** Wages and Covered Employment lag the rest of the Data Summary information by six months

*** Regular programs include State UI, UCFE and UCX.

+ Refers to most recent calendar year. Fourth and first quarter issues publish measure based on extrapolated wages. Second and third quarter issues publish measure based on actual wages.

See glossary for data definitions

Note: Blank cells appearing in any section of this report indicates that information is unavailable.

UI Data Summary for Virginia

CYQ: 2007.2

Benefits	(Quarterly)	Past 12 Months	Rank	<u>High Value : Qtr</u>		<u>Low Value : Qtr</u>	
Benefits Paid (000):	\$88,121	\$359,122	23	\$207,301	2002.1	\$2,738	1972.4
Initial Claims:	56,579	277,970	22	185,586	1991.1	16,939	1973.2
First Payments:	23,013	110,561	23	96,342	1975.1	5,286	1973.3
Weeks Claimed:	401,220	1,670,607	23	847,708	1975.1	83,251	1972.4
Wks Compensated:	336,675	1,384,551	25	759,236	1975.2	52,602	1972.4
Exhaustions:	9,560	36,052	21	18,990	2002.2	1,301	1972.4
Exhaustion Rate:		33.8%	26	42.9%	1975.2	14.3%	1990.3
Average Duration:		12.5	45	15.4	1976.1	7.5	1990.1
AWBA:	\$267.05	\$262.14	29	\$313.81	2002.2	\$45.63	1971.3
As % of AWW:	32.4		39				
Avg. Benefits per First Payment:		\$3,248					

Financial Information	Past 12 Months	Rank
State Revenues (000):	\$449,385	21
Total Wages (000)**:	\$39,401,791	12
Total Wages (Taxable Employers)(000)**:	\$33,423,095	12
Taxable Wages (000)**:	\$2,674,438	16
Avg. Weekly Wage**:	\$823.92	11
Avg. Tax Rate on Taxable Wages (%) **:	1.84	33
Avg. Tax Rate on Total Wages (%) **:	0.40	47
Calendar Yr Taxable Wage Base:	\$8,000	41
Trust Fund (TF) Balance (000):		
(Including Loans):	\$812,590	13
TF as % of Total Wages*:	0.63	39
Interest Earned (000):	\$9,411	14
Avg. High Cost Multiple +:	0.67	28
High Cost Multiple +:	0.43	29

Labor Force	(Quarterly)	Past 12 Mos	Rank
IUR (%):	0.9	0.9	50
TUR (%):	2.9	3.0	48
Total Unemp. (000):	119.8	121.3	20
Insured Unemployed (000) ***			
Regular Programs:	31.3	32.6	24
All Programs:	31.3	32.6	24
Reciency Rates (%) ***			
Regular Programs:	26	27	40
All Programs:	26	27	40
Covered Emp. (000)**:	3,512	3,482	12
Civ. Labor Force (000):	4,062	4,038	12
Subj. Employers (000):	187	183	13

Extended Benefits	(Quarterly)	Past 12 Months
Extended Benefits (000):	\$0	\$0
EB First Payments:	0	0
EB Weeks Claimed:	0	0
EB Exhaustions:	0	0

Loans	Rank
Outstanding Loan Bal (000):	\$0 1
Loan per Cov Employee:	\$0 1
Loan as % of Total Wages*:	0 1

* Based on extrapolated wages for the most recent 12 months.

** Wages and Covered Employment lag the rest of the Data Summary information by six months

*** Regular programs include State UI, UCFE and UCX.

+ Refers to most recent calendar year. Fourth and first quarter issues publish measure based on extrapolated wages. Second and third quarter issues publish measure based on actual wages.

See glossary for data definitions

Note: Blank cells appearing in any section of this report indicates that information is unavailable.

UI Data Summary for Washington

CYQ: 2007.2

Benefits	(Quarterly)	Past 12 Months	Rank	High Value : Qtr		Low Value : Qtr	
				Value	Rank	Value	Rank
Benefits Paid (000):	\$161,534	\$700,251	14	\$502,782	2002.1	\$28,236	1972.3
Initial Claims:	89,001	410,767	14	206,872	2001.4	76,810	1979.2
First Payments:	33,760	166,691	15	89,272	2001.4	26,788	1979.2
Weeks Claimed:	585,834	2,591,553	16	1,756,873	2002.1	459,778	1979.3
Wks Compensated:	512,526	2,244,193	16	1,646,496	2002.1	353,807	1979.3
Exhaustions:	9,492	35,563	22	30,315	1971.1	5,488	1979.3
Exhaustion Rate:		20.8%	50	41.5%	1976.1	19.2%	1980.1
Average Duration:		13.5	36	19.5	2002.4	12.4	1979.4
AWBA:	\$332.40	\$328.86	6	\$336.53	2002.3	\$57.77	1972.3
As % of AWW:	40.7		16				
Avg. Benefits per First Payment:		\$4,201					

Financial Information	Past 12 Months	Rank
State Revenues (000):	\$1,309,414	8
Total Wages (000)**:	\$30,656,202	14
Total Wages (Taxable Employers)(000)**:	\$24,397,136	14
Taxable Wages (000)**:	\$8,082,345	7
Avg. Weekly Wage**:	\$817.15	12
Avg. Tax Rate on Taxable Wages (%) **:	2.38	20
Avg. Tax Rate on Total Wages (%) **:	1.38	2
Calendar Yr Taxable Wage Base:	\$31,400	2
Trust Fund (TF) Balance (000):		
(Including Loans):	\$3,425,110	1
TF as % of Total Wages*:	3.52	2
Interest Earned (000):	\$40,204	1
Avg. High Cost Multiple +:	1.36	8
High Cost Multiple +:	0.87	10

Labor Force	(Quarterly)	Past 12 Mos	Rank
IUR (%):	1.6	1.8	26
TUR (%):	4.4	4.9	23
Total Unemp. (000):	147.0	162.9	16
Insured Unemployed (000) ***			
Regular Programs:	46.4	51.2	16
All Programs:	46.4	51.2	16
Reciency Rates (%) ***			
Regular Programs:	32	31	29
All Programs:	32	31	29
Covered Emp. (000)**:	2,814	2,781	15
Civ. Labor Force (000):	3,369	3,353	14
Subj. Employers (000):	196	196	12

Extended Benefits	(Quarterly)	Past 12 Months
Extended Benefits (000):	\$0	\$3
EB First Payments:	0	1
EB Weeks Claimed:	0	0
EB Exhaustions:	0	0

Loans	Rank
Outstanding Loan Bal (000):	\$0 1
Loan per Cov Employee:	\$0 1
Loan as % of Total Wages*:	0 1

* Based on extrapolated wages for the most recent 12 months.

** Wages and Covered Employment lag the rest of the Data Summary information by six months

*** Regular programs include State UI, UCFE and UCX.

+ Refers to most recent calendar year. Fourth and first quarter issues publish measure based on extrapolated wages. Second and third quarter issues publish measure based on actual wages.

See glossary for data definitions

Note: Blank cells appearing in any section of this report indicates that information is unavailable.

UI Data Summary for West Virginia

CYQ: 2007.2

Benefits	(Quarterly)	Past 12 Months	Rank	High Value : Qtr		Low Value : Qtr	
				Value	Year	Value	Year
Benefits Paid (000):	\$30,965	\$134,835	38	\$98,566	1983.1	\$3,940	1971.3
Initial Claims:	13,550	67,948	43	70,987	1977.1	13,253	2006.2
First Payments:	7,827	43,688	37	53,519	1977.1	7,534	2004.3
Weeks Claimed:	152,708	671,908	38	798,811	1983.1	136,981	1973.3
Wks Compensated:	134,866	588,357	38	723,321	1983.1	106,340	1973.3
Exhaustions:	2,624	10,057	42	14,289	1983.2	1,743	1971.2
Exhaustion Rate:		24.9%	46	42.1%	1983.3	12.3%	1979.1
Average Duration:		13.5	35	21.7	1983.4	9.3	1977.4
AWBA:	\$236.68	\$237.30	42	\$240.02	2006.4	\$36.07	1971.1
As % of AWW:	38.6		25				
Avg. Benefits per First Payment:		\$3,086					

Financial Information	Past 12 Months	Rank
State Revenues (000):	\$143,819	38
Total Wages (000)**:	\$5,733,902	41
Total Wages (Taxable Employers)(000)**:	\$4,462,320	41
Taxable Wages (000)**:	\$507,111	45
Avg. Weekly Wage**:	\$612.82	48
Avg. Tax Rate on Taxable Wages (%) **:	2.84	12
Avg. Tax Rate on Total Wages (%) **:	0.82	18
Calendar Yr Taxable Wage Base:	\$8,000	41
Trust Fund (TF) Balance (000):		
(Including Loans):	\$253,254	41
TF as % of Total Wages*:	1.47	21
Interest Earned (000):	\$2,917	42
Avg. High Cost Multiple +:	0.46	34
High Cost Multiple +:	0.36	30

Labor Force	(Quarterly)	Past 12 Mos	Rank
IUR (%):	1.8	2.0	24
TUR (%):	4.5	4.8	19
Total Unemp. (000):	36.6	38.6	36
Insured Unemployed (000) ***			
Regular Programs:	12.5	13.7	36
All Programs:	12.5	13.7	36
Reciency Rates (%) ***			
Regular Programs:	34	35	27
All Programs:	34	35	27
Covered Emp. (000)**:	690	683	39
Civ. Labor Force (000):	819	813	39
Subj. Employers (000):	37	37	43

Extended Benefits	(Quarterly)	Past 12 Months
Extended Benefits (000):	\$0	\$0
EB First Payments:	0	0
EB Weeks Claimed:	0	0
EB Exhaustions:	0	0

Loans	Rank
Outstanding Loan Bal (000):	\$0 1
Loan per Cov Employee:	\$0 1
Loan as % of Total Wages*:	0 1

* Based on extrapolated wages for the most recent 12 months.

** Wages and Covered Employment lag the rest of the Data Summary information by six months

*** Regular programs include State UI, UCFE and UCX.

+ Refers to most recent calendar year. Fourth and first quarter issues publish measure based on extrapolated wages. Second and third quarter issues publish measure based on actual wages.

See glossary for data definitions

Note: Blank cells appearing in any section of this report indicates that information is unavailable.

UI Data Summary for Wisconsin

CYQ: 2007.2

Benefits	(Quarterly)	Past 12 Months	Rank	High Value : Qtr		Low Value : Qtr	
Benefits Paid (000):	\$200,445	\$855,815	12	\$355,320	2002.1	\$13,881	1973.3
Initial Claims:	133,301	627,780	10	244,850	2001.4	40,405	1973.2
First Payments:	50,672	271,702	11	120,308	2002.1	15,946	1973.2
Weeks Claimed:	894,246	3,827,823	12	1,801,296	1983.1	291,967	1973.3
Wks Compensated:	833,843	3,559,442	11	1,600,491	1983.1	221,033	1973.3
Exhaustions:	19,454	66,592	13	35,071	1982.2	3,847	1973.3
Exhaustion Rate:		25.7%	44	39.7%	1982.4	14.8%	2000.4
Average Duration:		13.1	42	17.8	1976.1	10.9	2001.1
AWBA:	\$265.46	\$264.08	30	\$274.80	2007.1	\$56.98	1971.3
As % of AWW:	37.7		28				
Avg. Benefits per First Payment:		\$3,150					

Financial Information	Past 12 Months	Rank
State Revenues (000):	\$698,131	14
Total Wages (000)**:	\$26,707,741	19
Total Wages (Taxable Employers)(000)**:	\$21,359,589	20
Taxable Wages (000)**:	\$2,184,085	19
Avg. Weekly Wage**:	\$704.83	30
Avg. Tax Rate on Taxable Wages (%) **:	2.87	11
Avg. Tax Rate on Total Wages (%) **:	0.86	13
Calendar Yr Taxable Wage Base:	\$10,500	24
Trust Fund (TF) Balance (000):		
(Including Loans):	\$650,854	23
TF as % of Total Wages*:	0.81	34
Interest Earned (000):	\$7,453	22
Avg. High Cost Multiple +:	0.38	39
High Cost Multiple +:	0.29	37

Labor Force	(Quarterly)	Past 12 Mos	Rank
IUR (%):	2.5	2.7	7
TUR (%):	5.1	4.9	9
Total Unemp. (000):	157.3	149.7	13
Insured Unemployed (000) ***			
Regular Programs:	69.3	74.3	12
All Programs:	69.3	74.3	12
Reciency Rates (%) ***			
Regular Programs:	44	50	11
All Programs:	44	50	11
Covered Emp. (000)**:	2,766	2,737	16
Civ. Labor Force (000):	3,089	3,080	16
Subj. Employers (000):	131	130	20

Extended Benefits	(Quarterly)	Past 12 Months
Extended Benefits (000):	\$0	\$0
EB First Payments:	0	0
EB Weeks Claimed:	0	0
EB Exhaustions:	0	0

Loans	Rank
Outstanding Loan Bal (000):	\$0 1
Loan per Cov Employee:	\$0 1
Loan as % of Total Wages*:	0 1

* Based on extrapolated wages for the most recent 12 months.
 ** Wages and Covered Employment lag the rest of the Data Summary information by six months
 *** Regular programs include State UI, UCFE and UCX.
 + Refers to most recent calendar year. Fourth and first quarter issues publish measure based on extrapolated wages. Second and third quarter issues publish measure based on actual wages.
 See glossary for data definitions Note: Blank cells appearing in any section of this report indicates that information is unavailable.

UI Data Summary for Wyoming

CYQ: 2007.2

Benefits	(Quarterly)	Past 12 Months	Rank	High Value : Qtr		Low Value : Qtr	
Benefits Paid (000):	\$8,284	\$30,854	50	\$25,268	1983.1	\$282	1974.3
Initial Claims:	4,605	19,353	50	15,650	1983.1	1,089	1973.3
First Payments:	2,070	9,484	50	10,956	1983.1	440	1974.3
Weeks Claimed:	33,447	127,773	51	172,109	1983.1	7,676	1974.3
Wks Compensated:	30,406	116,491	51	180,987	1983.1	5,338	1974.3
Exhaustions:	777	2,601	51	5,042	1983.2	137	1974.4
Exhaustion Rate:		27.3%	42	50.1%	1983.2	17.1%	1979.4
Average Duration:		12.3	47	19.7	1987.3	9.6	1976.3
AWBA:	\$276.48	\$268.54	27	\$276.48	2007.2	\$47.47	1971.3
As % of AWW:	39.7		18				
Avg. Benefits per First Payment:		\$3,253					

Financial Information	Past 12 Months	Rank
State Revenues (000):	\$54,372	51
Total Wages (000)**:	\$2,573,505	52
Total Wages (Taxable Employers)(000)**:	\$2,051,999	51
Taxable Wages (000)**:	\$479,563	49
Avg. Weekly Wage**:	\$695.97	33
Avg. Tax Rate on Taxable Wages (%) **:	1.66	37
Avg. Tax Rate on Total Wages (%) **:	0.77	21
Calendar Yr Taxable Wage Base:	\$18,100	15
Trust Fund (TF) Balance (000):		
(Including Loans):	\$224,998	43
TF as % of Total Wages*:	2.78	7
Interest Earned (000):	\$2,680	43
Avg. High Cost Multiple +:	1.14	13
High Cost Multiple +:	0.96	9

Labor Force	(Quarterly)	Past 12 Mos	Rank
IUR (%):	0.9	0.9	46
TUR (%):	3.2	3.1	45
Total Unemp. (000):	9.1	9.0	52
Insured Unemployed (000) ***			
Regular Programs:	2.5	2.4	51
All Programs:	2.5	2.4	51
Reciency Rates (%) ***			
Regular Programs:	27	26	37
All Programs:	27	26	37
Covered Emp. (000)**:	263	260	52
Civ. Labor Force (000):	289	287	52
Subj. Employers (000):	21	21	50

Extended Benefits	(Quarterly)	Past 12 Months
Extended Benefits (000):	\$0	\$0
EB First Payments:	0	0
EB Weeks Claimed:	0	0
EB Exhaustions:	0	0

Loans	Rank
Outstanding Loan Bal (000):	\$0 1
Loan per Cov Employee:	\$0 1
Loan as % of Total Wages*:	0 1

* Based on extrapolated wages for the most recent 12 months.

** Wages and Covered Employment lag the rest of the Data Summary information by six months

*** Regular programs include State UI, UCFE and UCX.

+ Refers to most recent calendar year. Fourth and first quarter issues publish measure based on extrapolated wages. Second and third quarter issues publish measure based on actual wages.

See glossary for data definitions

Note: Blank cells appearing in any section of this report indicates that information is unavailable.

UI Data Summary for **United States**

CYQ: 2007.2

Benefits

	(Quarterly)	Past 12 Months	High Value : Qtr		Low Value : Qtr	
Benefits Paid (000):	\$7,621,123	\$31,043,997	\$12,080,573	2002.1	\$860,035	1973.3
Initial Claims:	3,775,260	16,630,866	8,229,191	1975.1	2,671,661	1973.2
First Payments:	1,586,875	7,500,787	4,663,186	1975.1	1,074,462	1973.2
Weeks Claimed:	31,389,978	130,233,319	62,573,667	1975.1	18,445,892	1973.3
Wks Compensated:	27,383,840	113,166,304	54,739,150	1983.1	15,351,045	1973.3
Exhaustions:	682,668	2,601,511	1,285,185	1983.1	332,910	1973.4
Exhaustion Rate:		35.4%	43.7%	2003.3	25.8%	1979.2
Average Duration:		15.1	17.5	1983.3	12.4	1975.1
AWBA:	\$287.52	\$283.34	\$289.33	2007.1	\$52.64	1971.3
As % of AWW:	35.6					
Avg. Benefits Per First Payment:		\$4,139				

Financial Information

	Past 12 Months
State Revenues (000):	\$34,247,075
Total Wages (000)**:	\$1,480,954,844
Total Wages (Taxable Employers) (000)**:	\$1,213,088,192
Taxable Wages (000)**:	\$143,495,417
Avg. Weekly Wage**:	\$807.03
Avg. Tax Rate on Taxable Wages (%) **:	2.67
Avg. Tax Rate on Total Wages (%) **:	0.75
Avg. State CY Taxable Wage Base:	\$11,411
Trust Fund (TF) Balance (000):	
(Including Loans):	\$40,398,877
TF as % of Total Wages*:	0.88
Interest Earned (000):	\$459,937
Avg. High Cost Multiple +:	0.51
High Cost Multiple +:	0.35

Labor Force

	(Quarterly)	Past 12 Months
IUR (%) (NSA)	1.8	1.9
TUR (%) (NSA)	4.4	4.6
Total Unemployed (000):	6,771	7,007
Insured Unemployed (000) ***		
Regular Programs:	2,442.5	2,535.5
All Programs:	2,442.5	2,535.6
Reciency Rates (%) ***		
Regular Programs:	36	36
All Programs:	36	36
Cov. Employ. (000)**:	133,880	132,171
Civ. Labor Force (000):	152,810	152,474
Subject Employers (000):	7,623	7,551

Extended Benefits

	(Quarterly)	Past 12 Months
Extended Benefits (000):	\$16	\$163
EB First Payments:	14	222
EB Weeks Claimed:	21	819
EB Exhaustions:	2	15

Loans

Outstanding Loan Bal (000):	\$0
Loan per Cov Employee:	\$0.00
Loan as % of Total Wages*:	0

* Based on extrapolated wages for the most recent 12 months.

** Wages and Covered Employment lag the rest of the Data Summary information by six months.

*** Regular programs include State UI, UCFE and UCX.

+ Refers to most recent calendar year. Fourth and first quarter issues publish measure based on extrapolated wages. Second and third quarter issues publish measure based on actual wages.

See glossary for data definitions

DATA DEFINITIONS

[Back to Data Summary Home](#)

[Back to State Selection Page](#)

AVERAGE BENEFITS PER FIRST PAYMENT

Benefits Paid for all weeks compensated divided by the number of first payments.

AVERAGE DURATION

The number of weeks compensated for the year divided by the number of first payments. (ETA 5159)

AVERAGE HIGH COST RATE

The average of the three highest calendar year benefit cost rates in the last 20 years (or a period including three recessions, if longer). Benefit cost rates are benefits paid (including the state's share of extended benefits but excluding reimbursable benefits) as a percent of total wages in taxable employment.

AVERAGE HIGH COST MULTIPLE (AHCM)

Calendar Year Reserve Ratio (or "TF as % of Total Wages"); divided by the Average High Cost Rate.

AVERAGE TAX RATE (Taxable Wages)

Total employer contributions for a 12 month period divided by the total taxable wages for the same time period. (ES 202)

AVERAGE TAX RATE (Total Wages)

Total employer contributions for a 12 month period divided by the total wages paid by taxable employers for the same time period. (ES 202)

AVERAGE WEEKLY BENEFIT AMOUNT (AWBA)

Benefits Paid for Total Unemployment divided by Weeks Compensated for Total Unemployment. (ETA 5159)

AVERAGE WEEKLY WAGE

Total wages divided by covered employment, divided by 52 weeks. (ES 202)

BENEFITS PAID

The Unemployment benefits paid to individuals under a state program, usually the first 26 weeks of benefits, for all weeks compensated including partial payments. (ETA 5159)

CIVILIAN LABOR FORCE

The average number of individuals who are either employed or unemployed in the week of the 12th for the three months of the quarter. (Bureau of Labor Statistics)

COVERED EMPLOYMENT

The number of employees covered by Unemployment Insurance reported to the states by employers. (ETA 202)

EXHAUSTIONS

Number of claimants drawing the final payment of their original entitlement for a given program. (ETA 5159)

DATA DEFINITIONS

[Back to Data Summary Home](#)

[Back to State Selection Page](#)

EXHAUSTION RATE

A rate computed by dividing the average monthly exhaustions by the average monthly first payments. To allow for the normal flow of claimants through the program, the numerator lags the denominator by 26 weeks, e.g., the exhaustion rate for CY 1995.3 is computed by dividing the average monthly exhaustions for the twelve months ending September 1995, by the average monthly first payments for the twelve months ending March 1995.

EXTENDED BENEFITS

The supplemental program that pays extended compensation during periods of specified high unemployment in a state to individuals for weeks of unemployment after exhaustion of regular UI benefits. One-half of EB is funded by the state trust fund. (ETA 5159)

FIRST PAYMENTS

The first payment in a benefit year for a week of unemployment claimed under a specific program. This is used as a proxy for "beneficiaries" under a specific program. (ETA 5159)

HIGH-COST MULTIPLE (HCM)

"TF as % of Total Wages" divided by the High Cost Rate. The High Cost Rate is the highest historical ratio of benefits to wages for a 12-month period.

HIGHEST/LOWEST QUARTER

The value displayed represents the quarter with the highest or lowest value beginning with the January through March quarter of 1971 (CY 1971.1). Exhaustion rate and average duration are for 4-quarter periods, ending with the quarter shown.

INITIAL CLAIMS

Any notice of unemployment filed (1) to request a determination of entitlement to and eligibility for compensation or (2) to begin a second or subsequent period of eligibility within a benefit year or period of eligibility. Interstate claims are counted in the paying state. (ETA 5159)

INSURED UNEMPLOYED

The average weekly number of weeks claimed for the three months of the quarter. (ETA 5159)

INSURED UNEMPLOYMENT RATE (IUR)

The rate computed by dividing Insured Unemployed for the current quarter by Covered Employment for the first four of the last six completed quarters. (ETA 539)

INTEREST EARNED

The amount of interest earned on the Unemployment Trust Fund account. (unpublished US Treasury reports)

DATA DEFINITIONS

[Back to Data Summary Home](#)

[Back to State Selection Page](#)

OUTSTANDING LOAN BALANCE	Balance, as of the end of the quarter, of advances acquired by the state under Title XII of the Social Security Act. (unpublished US Treasury reports)
RANK	All rankings are from highest to lowest for a particular item. Ties receive the same rank.
RECIPIENCY RATE	The insured unemployed in regular programs as a percent of total unemployed.
STATE REVENUE	Funds deposited in state accounts in the Unemployment Trust Fund (UTF). These revenues are used to pay state UI benefits and the state share of EB. (ETA 2112)
SUBJECT EMPLOYERS	The number of employers subject to UI taxes. (ETA 581)
TAX YEAR	The twelve-month time period in which a state's tax rate schedules and taxable wage base remain constant. This is equivalent to the calendar year for most states, with the exception of NH, NJ, TN, and VT. These 4 states have July-June tax years.
TAXABLE WAGES	Wages paid to covered employees that are subject to State Unemployment Insurance taxes. (ES 202)
TAXABLE WAGE BASE	For each State, the maximum amount of wages paid to an employee by an employer during a tax year which are subject to UI taxes. Wages above this amount are not subject to tax. Note: The taxable wage bases published in this report are current as of the date of issue. Therefore, they do not match the time period of the taxable wages and average tax rate on taxable wages.
TF AS % OF TOTAL WAGES	Trust fund balance as a percent of estimated wages for the most recent 12 months. Also referred to as the Reserve Ratio. Estimated wages are based on the latest growth rate in the 12 month moving average (MA). <i>Example for 1997.4: Growth rate = ((MA1997.2-MA1996.4)/MA1996.4); MA1997.4=MA1997.2*growth rate)</i>
TOTAL UNEMPLOYED	The average number of individuals, 16 years of age or older, who do not have a job but are available for work and actively seeking work in the week of the 12th for the three months of the quarter. This includes individuals on layoff and waiting to report to a new job within 30 days. (Bureau of Labor Statistics-Not Seasonally Adjusted)

DATA DEFINITIONS

[Back to Data Summary Home](#)

[Back to State Selection Page](#)

TOTAL UNEMPLOYMENT RATE (TUR)

The rate computed by dividing Total Unemployed by the Civilian Labor Force. (Bureau of Labor Statistics)

TOTAL WAGES

All wages or remuneration paid to workers on all payrolls covered by Unemployment Insurance. (ES 202)

TOTAL WAGES (Taxable Employers)

All wages or remuneration paid to workers by all taxable employers. (ES 202)

TRUST FUND BALANCE (TF)

The balance in the individual state account in the Unemployment Trust Fund. (unpublished US Treasury reports)

UCFE

Unemployment Compensation for Federal Civilian Employees

UCX

Unemployment Compensation for Ex-Service Members

UNEMPLOYMENT TRUST FUND (UTF)

A fund established in the Treasury of United States which contains all monies deposited by state agencies to the credit of their unemployment fund accounts and Federal unemployment taxes collected by the Internal Revenue Service.

WEEKS CLAIMED

The number of weeks of benefits claimed, including weeks for which a waiting period or fixed disqualification period is being served. Interstate claims are counted in the paying state. (ETA 5159)

WEEKS COMPENSATED

The number of weeks claimed for which UI benefits are paid. Weeks compensated for partial unemployment are included. Interstate claims are counted in the paying state. (ETA 5159)