

Comparison charts are also available on the DMAP's Web site at:

<[http://www.dhs.state.or.us/healthplan/data\\_pubs/planlist/main.html](http://www.dhs.state.or.us/healthplan/data_pubs/planlist/main.html)>



Open this guide to see Medical Plan Comparisons. Turn it over to see Dental Plan Comparisons.

- Find out if they are located near you.

**If you join a Dental Plan:**

- Find out which dentists you will have to use.
- Find out if they are located near you.

**Do you or a family member have a clinic or PCP that you go to?**

- A **PCP** is a Primary Care Provider (personal doctor or nurse).
- If you have a **PCP** or clinic, call and ask which Medical Plan your **PCP** or clinic belongs to.
- Specialist doctors.

Some Medical and Dental Plans have different rules about using specialist doctors. These rules can affect your use of referrals and other services. Call the Plan's Member Services to find out if the Medical and Dental Plan rules for specialist care meet your needs.

**Choose your OHP Medical and Dental Plan carefully because...**

You are not allowed to change Medical or Dental Plans until you reapply, unless you have a special reason. Talk to your worker. All Plans are **not alike**, even though all cover the same basic services.

**If you have Medicare coverage...**

If the OHP Medical Plan contracts with Medicare you'll see the name of the Medicare Plan in the row titled **Associated Medicare Plan**. If you have Medicare coverage and you choose an OHP Medical Plan that lists a Medicare Plan, you will also be required to join that Medicare Plan. The Medicare Plan will cover your Medicare benefits and prescription drugs covered by Medicare. Call the OHP Medical Plan for more information about coverage provided by its Medicare Plan.



**Tips to help you choose the OHP Medical and Dental Plan that is right for you.**

Call the Plans you are interested in and ask questions about the things that are important to you.

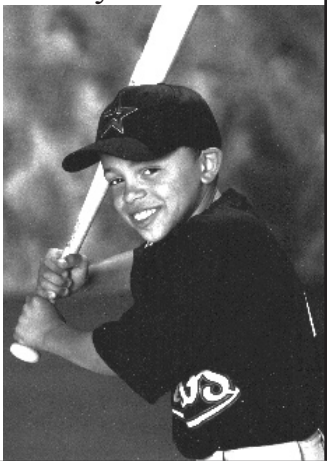
**If you join a Medical Plan:**

- Find out which doctors, clinics, hospitals, pharmacies and mental health arrangements you and your family will have to use.

**When you apply for the Oregon Health Plan, you may need to choose an OHP Managed Care Plan.**

Your OHP Managed Care Plan will coordinate all of your health care needs. With managed care:

- You and your family have guaranteed access to health care, 24 hours a day, 7 days a week,
- Your health care records are kept in one place to give you and your family better service and
- Your Plan covers a "basic" set of services.



**Choosing OHP Medical, Dental and Mental Health Plans**

Every family member must be in the **same OHP Medical Plan**. However, each family member can have a different Primary Care Provider (PCP) for example, personal doctor or nurse.

Every family member must be in the **same OHP Dental Plan**. However, each family member can have a different Primary Care Dentist (PCD).

You do not have to choose a **Mental Health Plan**. One will be assigned to you based on the OHP Medical Plan you choose.

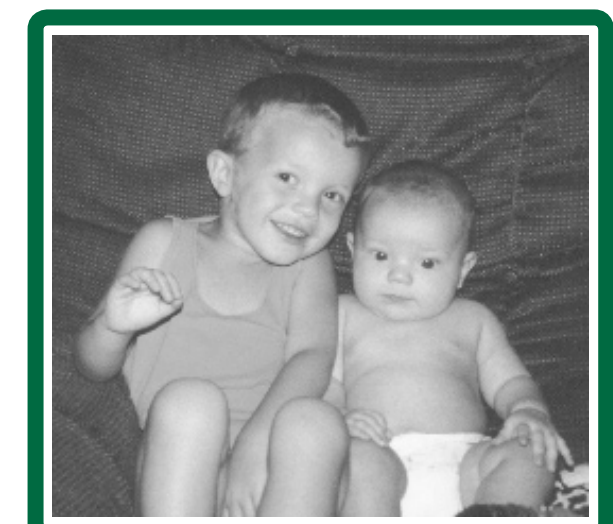
All Medical, Dental and Mental Health Plans must provide the same basic services.

**Your Dental Plans for Clackamas County**

Dental Plan Name	Hayden Family Dentistry Group	Managed Dental Care of Oregon	MultiCare Dental	ODS Community Health	Willamette Dental Group	Capitol Dental Care
Dental Plan Phone Numbers	Salem: (503) 589-4515 Tigard: (503) 443-3842 or 1-888-468-0022 TTY: 1-866-599-8657	(503) 581-1407 or 1-800-538-9604 TTY: 1-800-669-4041	(503) 988-3711 or 1-877-350-7333 TTY: 1-800-735-1232	(503) 243-2987 or 1-800-342-0526 TTY: (503) 243-3958 or 1-800-433-6313	(503) 952-2100 or 1-800-461-8994 TTY: 1-800-735-1232	(503) 585-5205 or 1-800-525-6800 TTY: 1-800-735-1232 or 1-800-855-1155
Web Address	www.hfdg.com			www.odscompanies.com/ohp	www.willamette-dental.com	www.capitoldentalcare.com
Primary Care Dentist Locations	Salem Tigard	Clackamas Gresham Hillsboro Lake Oswego Milwaukie Molalla Portland (N, NE, NW, SE, SW) Tigard	Molalla Oregon City	Canby Clackamas Estacada Lake Oswego Milwaukie Molalla Oregon City Redland Sandy West Linn	Milwaukie	Beaverton Clackamas Estacada Gresham Hillsboro Lake Oswego Milwaukie/ Oregon City Molalla Portland (N, NE, NW, SE, SW) Tigard West Linn

Service Areas and Phone Numbers

See inside for Medical Plan information



**Comparison Chart  
Clackamas County**

**Your guide to choosing Oregon Health Plan (OHP) Managed Care Plans**

Use this chart to help you choose an OHP Medical Plan and Dental Plan. Fill in your Medical and Dental Plan choices on your OHP application.



## Your Medical Plans for Clackamas County

Medical Plan Name	FamilyCare, Inc.	Kaiser Permanente Oregon Plus	Providence Health Assurance	CareOregon
<b>Medical Plan Phone Numbers</b>	Not all ZIP Codes covered (503) 222-2880 or 1-800-458-9518 TTY: 1-800-735-2900	Not all ZIP Codes covered (503) 813-2000 or 1-800-813-2000 TTY: 1-800-735-2900	(503) 574-8200 or 1-800-898-8174 TTY: (503) 574-8702	(503) 416-4100 or 1-800-224-4840 TTY: (503) 416-3700
<b>Web Address</b>	www.familycareinc.org	www.kp.org	www.providence.org/ healthplans	www.careoregon.org
<b>Contracted Hospitals</b>	Gresham: Legacy Mt. Hood Hospital; Milwaukie: Providence Hospital; Oregon City: Willamette Falls Hospital; Portland: Legacy Emanuel, Legacy Good Samaritan, Providence Hospital; Tualatin: Legacy Meridian Park	Clackamas: Kaiser Sunnyside Medical Center; Portland: Doernbecher/OHSU, Providence St. Vincent Medical Center; Salem: Salem Hospital; Vancouver, WA: SW WA Medical Center	Milwaukie: Providence Hospital; Newberg: Providence Hospital; Portland: Providence Hospital, Providence St. Vincent Medical Center	Gresham: Legacy Mt. Hood Hospital; Milwaukie: Providence Milwaukie Hospital; Oregon City: Willamette Falls Hospital; Portland: Adventist Medical Center, Doernbecher/OHSU, Legacy Emanuel, Providence Hospital
<b>Primary Care Provider Locations</b>	Canby Clackamas Milwaukie Molalla Oregon City Sandy Tualatin Woodburn	Beaverton Clackamas Gresham Hillsboro Longview, WA Portland Salem Tualatin	Clackamas Milwaukie Wilsonville	Canby Clackamas Estacada Gladstone Lake Oswego Milwaukie Molalla Oregon City Sandy
<b>Pharmacy Arrangements</b>	Albertsons, Bi-Mart, Fred Meyer, Rite Aid, Safeway; 32 other local pharmacies	Division Medical Office, Kaiser Sunnyside Medical Center, Mt. Scott Medical Office, Rockwood Medical Office, Mt. Talbert Medical Office; 14 other local pharmacies	Fred Meyer, Hi-School Pharmacy, Providence, Safeway, Walgreen; 5 other local pharmacies	Albertsons, Bi-Mart, Fred Meyer, Rite Aid, Safeway; other local pharmacies
<b>Associated Medicare Plan</b>	FamilyCare Health Plans	Senior Advantage	Providence Medicare Plans	CareOregon Advantage
<b>Mental Health Arrangements</b>	FamilyCare, Inc. 1-866-798-2230 TTY: 1-800-735-2900	Clackamas MHO (503) 742-5335 or 1-888-651-2134 TTY: (503) 655-8388	Clackamas MHO (503) 742-5335 or 1-888-651-2134 TTY: (503) 655-8388	Clackamas MHO (503) 742-5335 or 1-888-651-2134 TTY: (503) 655-8388
<b>Web Address</b>		www.clackamas.us/ community_health/ behavioral/mho.htm	www.clackamas.us/ community_health/ behavioral/mho.htm	www.clackamas.us/ community_health/ behavioral/mho.htm
<b>Quality Survey Results</b>	<b>Getting needed care</b> Members found a PCP and got referrals to specialists.	★	★★★	★★
	<b>Getting care without long waits</b> Members got appointments easily, did not have a long wait in the reception area, and got help on the phone.	★★	★★	★★
	<b>Doctor's communication</b> Members had a doctor who listens, explains, shows respect and spends time with them.	★★	★★	★★
	<b>Courtesy of doctor's office staff</b> Doctors' office staff are courteous and helpful.	★★	★★	★★
	<b>Medical Plan's customer service</b> Members got helpful information and paperwork.	★★	★★	★★

★★★ Above Average    ★★ Average    ★ Below Average

### About the Medical Plan Quality Survey

The survey information is from 2004 and it's for the medical plan's service areas throughout Oregon, it is not county specific.

The Division of Medical Assistance Programs (DMAP) manages the Oregon Health Plan. DMAP asked an independent, outside company to do a survey to find out what adults and children think of their Medical Plan and medical care.

The survey asked about things that only patients can answer, such as whether it's easy to get the care they need.

People young and old, well and sick, of different cultures, from all over Oregon answered questions about their Medical Plan and care. Adults were asked about their care; parents were asked about their child's Medical Plan and care.

See the full survey results at:  
<[www.dhs.state.or.us/healthplan/data\\_pubs/reports.html](http://www.dhs.state.or.us/healthplan/data_pubs/reports.html)>