

Unemployment Insurance Data Summary

[Individual State Data](#)

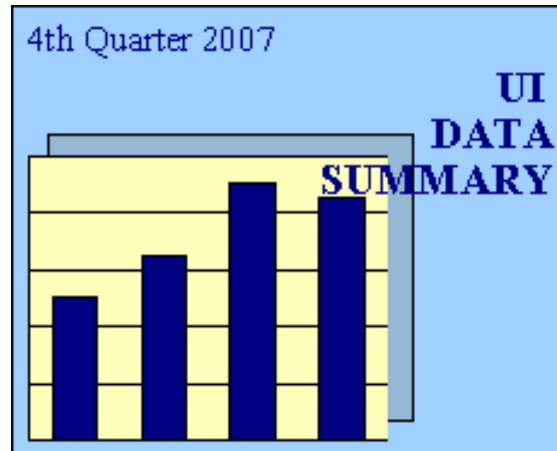
[US Summary Tables](#)

- [Summary Benefits Data](#)
- [Summary Financial Data](#)
- [Benefits and Duration Data](#)
- [Summary Labor Force Data](#)
- [Wage and Tax Rate Data](#)

[Charts](#)

[Glossary of data definitions](#)

[Choose another quarter](#)



The UI Data Summary is produced quarterly from state-reported data contained in the Unemployment Insurance Data Base (UIDB) as well as UI-related data from outside sources (e.g., Bureau of Labor Statistics data on employment and unemployment and U.S. Department of Treasury data on state UI trust fund activities). This data base is maintained by the Division of Actuarial Services, Office of Income Support (OIS), U.S. Department of Labor.

This report is intended to provide the user with a quick overview of the status of the UI system at the national and state levels. Tables are provided for each state and many data items are repeated on [summary tables](#) which show all states together. The [glossary](#) gives the definition of each data item in the report. Except for reciprocity rates, UCFE and UCX data is not included. Except for covered employment and wage data, which have a reporting/processing lag, all the data refers to the same quarter. This quarter is shown on the front cover and is also the first column heading on each individual state page. The year and quarter are indicated by the notation CYyyyy.q (e.g. CY1995.4). For many data items, the report shows -- in addition to the latest quarter -- data for the latest twelve months, the highest and lowest quarters historically, and the state's rank among all states. If a state has failed to report for a particular time period, estimated data are used; however, if the time period extends too far for reasonable estimates, blanks are displayed instead.

Your comments and suggestions are welcomed. For further information please contact **Kevin Stapleton** at the Division of Fiscal and Actuarial Services, Room C-4514, 200 Constitution Ave., NW, Washington, DC 20210, phone (202) 693-3009. You can also reach the receptionist at (202) 693-3039. If you want quarterly copies mailed to you, add your name to the [Data summary mailing list](#).

NOTE: Starting with 2006.3, interstate initial claims and weeks claimed are reported in the paying state rather than the state of residence.

ALSO: Blank cells appearing in any section of this report indicates that information is unavailable.

ATTENTION:

Now available on the Department of Labor, Office of Workforce Security website, and by mail, is a new report called “**Significant Measures of State Unemployment Insurance Tax Systems**” (<http://www.ows.doleta.gov/unemploy/finance.asp>). This will be a yearly report containing a compilation of new and existing tax measures for each state, which is intended to provide users with the information necessary to evaluate and compare state UI tax systems. The report is produced by the Division of Fiscal and Actuarial Services in the Office of Workforce Security and calendar years 2006 and 2005 are now available.

Charts Categories: 4th Quarter 2007

[Data Summary Home](#)

[Data Summary Glossary](#)

[Data Summary Mailing List](#)

[OWS Homepage](#)

Click on desired Chart Category to jump to that section:

[Regular Benefits](#)

[Trust Fund Balance](#)

[Revenues](#)

[Regular AWBA](#)

[Initial Claims](#)

[Weeks Claimed](#)

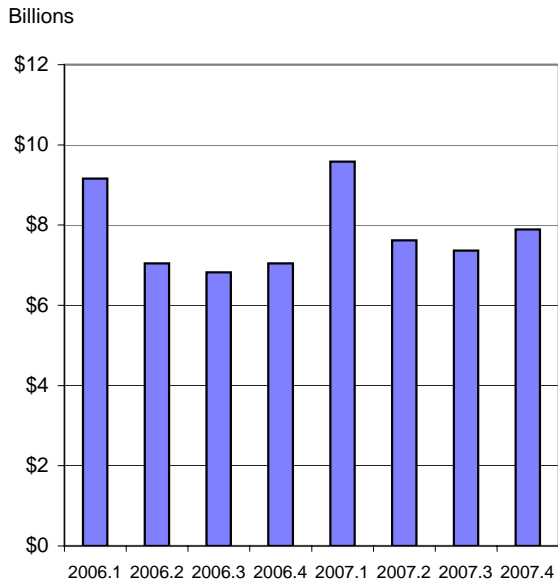
[First Payments](#)

[Exhaustions](#)

[AHCM](#)

Note: Blank cells appearing in any section of this report indicates that information is unavailable.

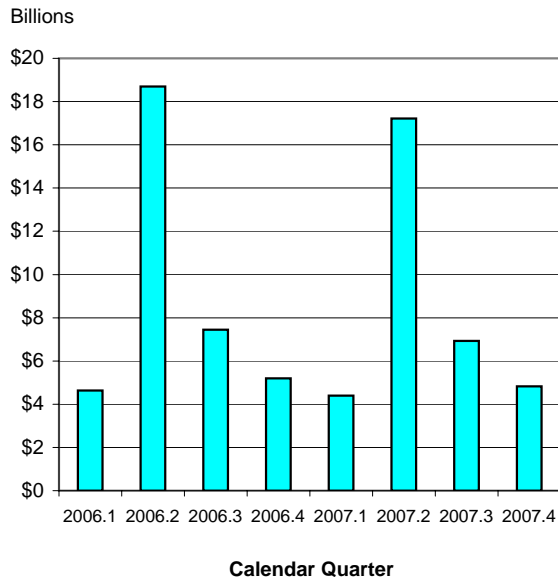
REGULAR BENEFITS



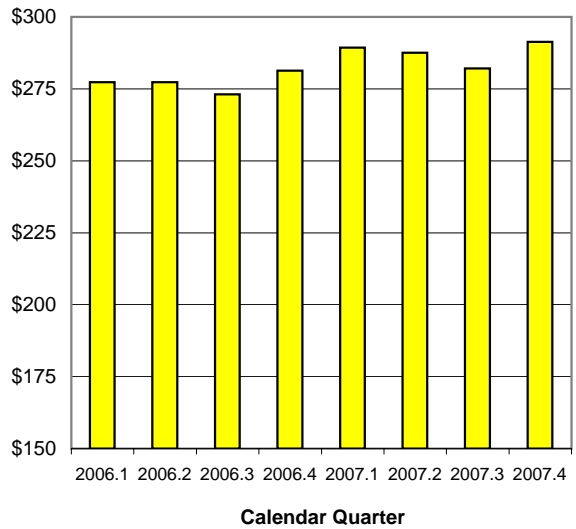
TRUST FUND BALANCE



REVENUES

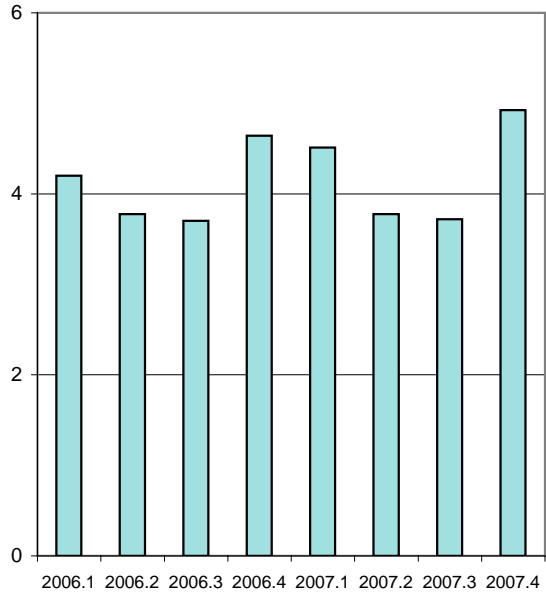


REGULAR AWBA



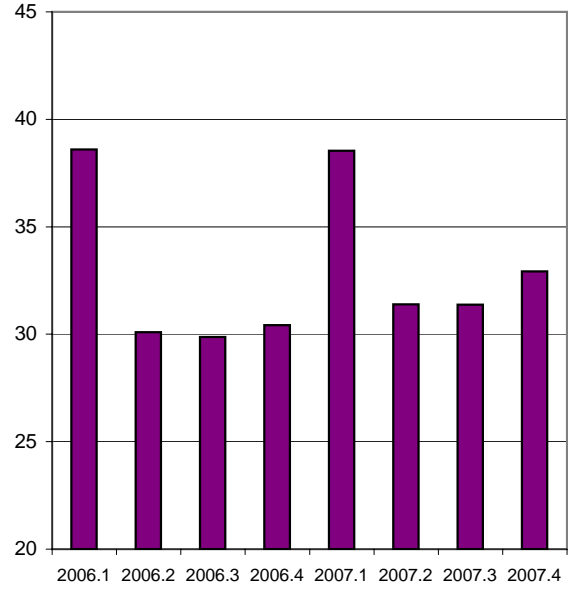
Millions

INITIAL CLAIMS



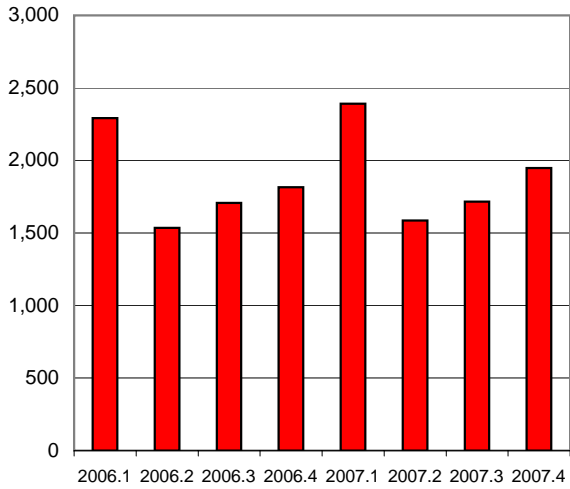
Millions

WEEKS CLAIMED



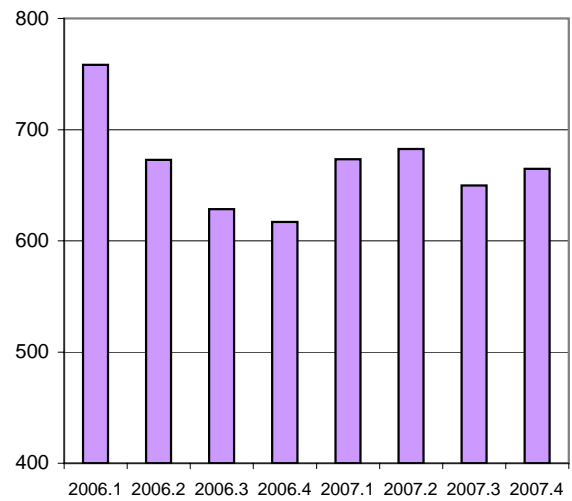
FIRST PAYMENTS

Thousands



EXHAUSTIONS

Thousands



Summary Tables: 4th Quarter 2007

[Data Summary Home](#)

[Data Summary Glossary](#)

[Data Summary Mailing List](#)

[OWS Homepage](#)

Click on desired information to jump to that section:

[Summary Benefits Data](#)

[Summary Financial Data](#)

[Benefits and Duration Data](#)

[Labor Force Information](#)

[Wage and Tax Rate Information](#)

Note: Blank cells appearing in any section of this report indicates that information is unavailable.

Regular Benefits Information by State for CYQ 2007.4

State	Initial Claims	First Payments	Weeks Claimed	Weeks Compensated	Exhaustions	Exhaustion Rate
Alabama	60,675	22,496	358,493	295,365	6,960	26.0%
Alaska	26,746	12,258	159,090	139,659	3,437	38.6%
Arizona	45,070	21,570	385,771	330,230	8,534	42.7%
Arkansas	66,910	27,253	393,881	304,967	7,047	36.0%
California	654,583	265,721	5,114,807	4,358,647	110,004	44.6%
Colorado	34,354	18,126	288,871	226,374	6,931	40.7%
Connecticut	59,130	28,171	466,493	436,387	9,494	31.9%
Delaware	14,291	5,667	98,335	97,907	2,042	33.9%
District of Columbia	7,674	4,305	99,809	84,667	2,427	54.5%
Florida	167,208	91,856	1,659,649	1,396,836	39,542	47.1%
Georgia	135,744	60,265	817,119	639,761	18,713	35.5%
Hawaii	16,458	5,912	98,528	84,237	1,366	23.6%
Idaho	36,204	13,822	173,670	126,919	2,355	25.9%
Illinois	217,653	92,957	1,685,041	1,392,337	31,614	36.1%
Indiana	139,363	48,727	680,551	559,578	17,115	40.3%
Iowa	67,321	22,618	295,680	236,568	4,818	23.1%
Kansas	39,007	12,972	229,806	186,678	4,338	29.1%
Kentucky	98,319	28,829	373,533	367,249	6,166	21.3%
Louisiana	32,992	14,189	243,812	195,535	5,063	40.7%
Maine	20,390	8,541	113,795	93,424	2,113	30.3%
Maryland	62,686	28,614	464,828	402,789	8,449	31.7%
Massachusetts	122,120	49,707	1,003,784	883,476	18,607	35.0%
Michigan	289,270	102,979	1,626,751	1,393,819	33,860	33.5%
Minnesota	87,053	35,600	620,410	482,918	10,737	32.9%
Mississippi	36,470	12,960	226,284	183,028	5,031	31.5%
Missouri	105,637	31,349	536,071	426,646	10,063	29.3%
Montana	17,549	6,643	90,797	69,392	1,428	31.9%
Nebraska	20,871	7,757	117,536	87,913	3,598	44.1%
Nevada	47,410	24,978	378,127	339,674	7,473	37.6%
New Hampshire	15,137	5,881	83,825	69,847	1,008	16.6%
New Jersey	158,415	72,975	1,425,817	1,302,915	34,118	44.7%
New Mexico	15,005	7,689	141,745	120,197	3,056	42.4%
New York	268,514	112,242	2,110,914	1,883,643	40,575	36.8%
North Carolina	170,935	61,712	1,024,717	853,828	25,369	41.3%
North Dakota	8,625	3,585	35,154	28,052	792	30.8%
Ohio	202,176	69,533	1,208,657	965,378	18,554	28.4%
Oklahoma	27,965	9,626	173,937	148,149	3,680	36.9%
Oregon	113,644	42,199	604,664	510,795	10,063	30.6%
Pennsylvania	365,371	107,754	2,036,128	1,656,938	32,617	28.9%
Puerto Rico	33,814	21,549	502,197	464,595	11,440	47.3%
Rhode Island	22,376	9,372	168,067	147,623	3,934	39.1%
South Carolina	79,728	31,228	513,594	422,908	11,235	38.2%
South Dakota	5,776	1,834	21,085	15,848	193	10.6%
Tennessee	76,300	32,430	469,284	453,664	14,116	35.1%
Texas	164,788	64,658	1,222,238	1,046,318	26,784	36.5%
Utah	20,721	8,678	116,965	96,049	1,856	30.7%
Vermont	16,502	6,601	80,604	69,172	1,120	18.6%
Virgin Islands	825	598	10,518	9,419	206	42.4%
Virginia	74,219	26,868	412,128	319,628	8,193	33.1%
Washington	134,180	53,328	681,548	572,510	7,797	20.6%
West Virginia	18,908	10,292	148,221	126,012	2,231	22.9%
Wisconsin	195,082	78,182	899,433	828,599	15,906	25.5%
Wyoming	7,099	2,764	33,021	27,634	583	28.8%
United States	4,925,263	1,948,420	32,925,783	27,962,701	664,751	35.6%

Financial Information by State for CYO 2007.4

State	Revenues (000) {Last 12 Months}	TF Balance (000)	TF as % of Total Wages*	Interest Earned (000)	AHCM+	HCM+
Alabama	\$223,063	\$410,640	0.72	\$5,182	0.52	0.33
Alaska	\$149,627	\$331,214	3.36	\$4,006	1.07	0.78
Arizona	\$315,821	\$990,481	1.10	\$12,163	1.10	0.44
Arkansas	\$257,076	\$151,132	0.49	\$2,117	0.32	0.18
California	\$5,029,570	\$2,533,133	0.40	\$35,141	0.27	0.18
Colorado	\$434,620	\$630,397	0.74	\$7,772	0.67	0.59
Connecticut	\$551,645	\$598,111	0.76	\$7,644	0.54	0.23
Delaware	\$84,353	\$174,156	1.10	\$2,196	0.91	0.43
District of Columbia	\$107,726	\$400,275	1.47	\$4,883	1.11	0.80
Florida	\$924,404	\$2,203,889	0.85	\$28,044	1.04	0.46
Georgia	\$546,641	\$1,281,787	0.90	\$16,045	0.96	0.42
Hawaii	\$117,892	\$556,334	3.17	\$6,788	1.88	1.50
Idaho	\$134,944	\$196,048	1.10	\$2,456	0.46	0.35
Illinois	\$2,304,528	\$1,801,983	0.79	\$22,886	0.34	0.30
Indiana	\$565,019	\$306,787	0.35	\$4,458	0.29	0.20
Iowa	\$346,767	\$740,178	1.81	\$9,050	0.89	0.69
Kansas	\$234,727	\$637,983	1.40	\$7,890	0.96	0.71
Kentucky	\$367,223	\$230,766	0.45	\$3,061	0.21	0.16
Louisiana	\$181,418	\$1,444,768	2.54	\$17,537	0.93	0.82
Maine	\$107,699	\$479,164	3.19	\$5,845	1.64	1.12
Maryland	\$404,962	\$1,016,659	1.14	\$12,691	0.78	0.52
Massachusetts	\$1,578,772	\$1,290,297	0.90	\$16,336	0.50	0.28
Michigan	\$1,624,370	\$31,111	0.02	\$718	N.A.	N.A.
Minnesota	\$864,059	\$545,587	0.59	\$6,959	0.38	0.30
Mississippi	\$110,908	\$727,918	2.60	\$8,906	1.70	1.32
Missouri	\$578,668	\$113,246	0.14	\$1,572	0.12	0.07
Montana	\$89,796	\$280,512	2.47	\$3,402	1.45	0.82
Nebraska	\$127,333	\$278,865	1.16	\$3,401	1.21	0.74
Nevada	\$372,212	\$793,215	1.73	\$9,833	1.02	0.63
New Hampshire	\$55,746	\$240,422	1.08	\$2,988	1.16	0.43
New Jersey	\$1,920,320	\$650,449	0.38	\$8,963	0.21	0.11
New Mexico	\$110,660	\$575,524	2.59	\$7,101	1.85	1.58
New York	\$2,350,352	\$429,723	0.11	\$6,985	0.09	0.04
North Carolina	\$927,798	\$394,426	0.31	\$5,364	0.23	0.13
North Dakota	\$53,849	\$134,442	1.68	\$1,623	0.80	0.72
Ohio	\$1,096,249	\$444,530	0.27	\$6,621	0.12	0.09
Oklahoma	\$209,200	\$831,388	1.94	\$10,137	1.54	1.42
Oregon	\$642,785	\$1,933,225	3.67	\$23,594	1.46	1.14
Pennsylvania	\$2,348,448	\$1,545,652	0.83	\$20,518	0.30	0.25
Puerto Rico	\$186,276	\$529,260	3.22	\$6,519	1.00	0.73
Rhode Island	\$189,176	\$159,901	1.08	\$2,133	0.37	0.25
South Carolina	\$289,507	\$199,183	0.38	\$2,769	0.26	0.13
South Dakota	\$26,418	\$24,680	0.27	\$308	0.33	0.25
Tennessee	\$360,274	\$566,161	0.65	\$7,195	0.48	0.30
Texas	\$1,055,240	\$1,774,694	0.46	\$24,548	0.44	0.40
Utah	\$198,437	\$842,680	2.32	\$10,142	1.44	1.15
Vermont	\$64,132	\$177,613	2.28	\$2,221	1.21	0.72
Virgin Islands	\$1,556	\$22,287	1.96	\$291	0.78	0.68
Virginia	\$416,274	\$775,202	0.58	\$9,703	0.70	0.44
Washington	\$1,235,150	\$3,794,156	3.76	\$45,806	1.54	0.98
West Virginia	\$141,419	\$244,786	1.40	\$3,077	0.45	0.35
Wisconsin	\$685,797	\$592,228	0.72	\$7,827	0.29	0.23
Wyoming	\$54,007	\$243,500	2.89	\$2,935	1.13	0.95
United States	\$33,354,912	\$38,302,749	0.80	\$488,344	0.52	0.36

+ Refers to most recent calendar year. Fourth and first quarter issues publish measure based on extrapolated wages; Second and third quarter issues publish measure based on actual wages.

* Based on extrapolated wages for the most recent 12 months.

N.A. : Not Applicable -- These states have outstanding debt exceeding their fund balances

Benefits and Duration Information by State for CYQ 2007.4

State	Regular Benefits Paid (000)	Extended Benefits Paid (000)	AWBA	Average Duration	Avg Benefits per First Payment
Alabama	\$55,591	\$0	\$191.05	12.0	\$2,212
Alaska	\$27,801	\$0	\$203.39	14.4	\$2,814
Arizona	\$68,017	\$0	\$208.70	15.1	\$3,014
Arkansas	\$75,960	\$0	\$262.90	14.5	\$3,555
California	\$1,275,154	\$0	\$303.09	16.8	\$4,839
Colorado	\$74,714	\$0	\$333.97	13.4	\$4,322
Connecticut	\$130,905	\$0	\$315.37	16.1	\$4,774
Delaware	\$24,987	\$0	\$254.11	17.2	\$4,416
District of Columbia	\$23,734	\$0	\$287.02	19.1	\$5,336
Florida	\$330,163	\$0	\$239.02	14.4	\$3,386
Georgia	\$164,252	\$0	\$265.01	11.2	\$2,852
Hawaii	\$31,881	\$0	\$392.94	13.4	\$4,991
Idaho	\$31,679	\$0	\$262.80	11.3	\$2,734
Illinois	\$420,733	\$0	\$303.34	17.3	\$5,266
Indiana	\$157,803	\$0	\$289.61	13.3	\$3,764
Iowa	\$66,485	\$0	\$295.15	12.9	\$3,608
Kansas	\$56,479	\$0	\$306.69	13.5	\$4,029
Kentucky	\$103,476	\$0	\$292.15	13.5	\$3,690
Louisiana	\$39,892	\$2	\$206.41	15.0	\$3,036
Maine	\$23,339	\$0	\$257.45	14.1	\$3,502
Maryland	\$114,699	\$0	\$288.89	14.7	\$4,102
Massachusetts	\$331,909	\$0	\$384.70	18.0	\$6,651
Michigan	\$397,087	\$0	\$294.45	14.8	\$4,244
Minnesota	\$158,414	\$0	\$335.37	16.4	\$5,335
Mississippi	\$31,368	\$0	\$177.13	14.5	\$2,494
Missouri	\$95,426	\$0	\$229.59	14.0	\$3,075
Montana	\$15,691	\$0	\$231.22	14.8	\$3,235
Nebraska	\$19,899	\$0	\$233.44	12.3	\$2,807
Nevada	\$95,721	\$0	\$288.61	14.4	\$3,991
New Hampshire	\$18,835	\$0	\$278.39	12.6	\$3,231
New Jersey	\$461,607	\$0	\$368.18	18.1	\$6,291
New Mexico	\$32,191	\$0	\$269.73	16.3	\$4,136
New York	\$548,748	\$0	\$303.95	17.1	\$4,844
North Carolina	\$233,452	\$0	\$282.24	13.9	\$3,720
North Dakota	\$7,550	\$0	\$271.13	11.9	\$3,164
Ohio	\$279,883	\$0	\$294.72	15.2	\$4,340
Oklahoma	\$36,589	\$0	\$252.11	15.1	\$3,685
Oregon	\$148,192	\$0	\$296.36	14.0	\$3,919
Pennsylvania	\$513,169	\$0	\$330.62	16.2	\$4,890
Puerto Rico	\$50,521	\$0	\$111.81	18.9	\$2,046
Rhode Island	\$53,687	\$0	\$374.08	15.6	\$5,442
South Carolina	\$96,620	\$0	\$235.79	13.8	\$3,081
South Dakota	\$3,532	\$0	\$227.91	11.3	\$2,507
Tennessee	\$99,139	\$0	\$224.57	13.9	\$3,007
Texas	\$297,121	\$0	\$293.87	14.8	\$4,112
Utah	\$28,282	\$0	\$300.87	12.7	\$3,745
Vermont	\$19,073	\$0	\$287.46	14.4	\$3,995
Virgin Islands	\$3,057	\$0	\$338.13	15.3	\$4,669
Virginia	\$86,694	\$0	\$278.23	12.4	\$3,248
Washington	\$188,036	\$1	\$344.61	13.1	\$4,173
West Virginia	\$29,717	\$0	\$244.80	13.5	\$3,118
Wisconsin	\$202,449	\$0	\$267.92	13.2	\$3,206
Wyoming	\$7,805	\$0	\$286.34	12.7	\$3,482
United States	\$7,889,209	\$2	\$291.32	15.2	\$4,243

Labor Force Information by State (Levels in thousands) for CYQ 2007.4

State	IUR (%)	TUR (%)	Covered Employment **	Civilian Labor Force	Total Unemployment	Insured Unemployment	
						Regular Programs *	All Programs +
Alabama	1.5	3.5	1,905	2,201	77.8	28.7	28.7
Alaska	3.5	6.1	299	351	21.3	10.5	10.5
Arizona	1.2	4.1	2,589	3,063	125.3	31.3	31.3
Arkansas	2.7	5.2	1,164	1,366	70.6	30.9	30.9
California	2.5	5.6	15,455	18,324	1,029.4	392.7	392.7
Colorado	1.0	3.9	2,242	2,742	108.1	22.8	22.8
Connecticut	2.1	4.5	1,677	1,875	83.5	35.0	35.0
Delaware	2.0	3.2	419	445	14.4	7.6	7.6
District of Columbia	1.0	5.7	488	326	18.5	4.8	4.8
Florida	1.6	4.4	7,874	9,215	403.7	130.4	130.4
Georgia	1.6	4.4	3,995	4,854	215.5	66.1	66.1
Hawaii	1.2	2.8	594	647	18.0	7.6	7.6
Idaho	2.1	2.5	654	757	19.1	14.0	14.0
Illinois	2.2	5.0	5,822	6,733	334.1	128.9	128.9
Indiana	1.8	4.2	2,890	3,204	135.8	52.4	52.4
Iowa	1.5	3.7	1,480	1,668	61.6	22.8	22.8
Kansas	1.3	3.8	1,336	1,480	56.4	17.7	17.7
Kentucky	1.7	5.0	1,781	2,042	101.4	30.5	30.5
Louisiana	1.1	3.5	1,841	2,012	70.8	20.1	20.1
Maine	1.5	4.7	589	704	33.0	9.0	9.0
Maryland	1.6	3.4	2,440	2,983	102.4	38.8	38.8
Massachusetts	2.4	3.9	3,204	3,396	133.5	76.5	76.5
Michigan	3.0	7.0	4,166	4,997	349.5	126.5	126.5
Minnesota	1.8	4.3	2,661	2,929	126.0	47.9	47.9
Mississippi	1.7	6.0	1,110	1,326	80.0	18.7	18.7
Missouri	1.6	5.1	2,696	3,028	153.5	43.0	43.0
Montana	1.7	3.2	428	500	15.8	7.6	7.6
Nebraska	1.0	2.8	905	984	27.4	8.9	8.9
Nevada	2.3	5.2	1,276	1,356	70.6	29.1	29.1
New Hampshire	1.1	3.1	626	737	23.2	6.6	6.6
New Jersey	2.7	3.9	3,944	4,462	176.2	106.4	106.4
New Mexico	1.4	3.1	795	948	29.4	11.5	11.5
New York	1.9	4.5	8,455	9,529	429.7	162.9	162.9
North Carolina	2.0	4.6	4,012	4,526	207.4	81.0	81.0
North Dakota	0.8	2.7	334	363	9.9	2.7	2.7
Ohio	1.8	5.5	5,268	5,989	327.9	94.6	94.6
Oklahoma	0.9	4.2	1,492	1,739	72.6	13.8	13.8
Oregon	2.8	5.1	1,707	1,940	98.9	47.8	47.8
Pennsylvania	2.8	4.2	5,587	6,302	262.4	156.8	156.8
Puerto Rico	3.9	11.1	1,004	1,364	151.6	39.7	39.7
Rhode Island	2.7	4.8	476	578	27.8	12.7	12.7
South Carolina	2.2	6.1	1,877	2,136	129.2	41.1	41.1
South Dakota	0.5	2.7	385	442	12.0	1.8	1.8
Tennessee	1.4	4.9	2,706	3,065	149.8	37.3	37.3
Texas	0.9	4.2	10,057	11,566	480.2	94.1	94.1
Utah	0.8	2.7	1,187	1,384	37.4	9.5	9.5
Vermont	2.0	3.5	296	352	12.3	6.0	6.0
Virgin Islands	1.4		46			0.7	0.7
Virginia	0.9	3.1	3,540	4,063	124.8	32.5	32.5
Washington	1.8	4.4	2,863	3,451	152.9	53.2	53.2
West Virginia	1.7	4.2	688	808	34.0	12.2	12.2
Wisconsin	2.5	4.4	2,770	3,084	134.8	69.6	69.6
Wyoming	0.8	2.9	272	289	8.5	2.3	2.3
United States	1.9	4.4	134,366	157,772	7,020.0	2,557.7	2,557.7

* Includes State UI, UCFE, and UCX

** Wages and Covered Employment lag the rest of the Data Summary information by 6 months.

+ Does not include TEUC

Note: Blank cells appearing in any section of this report indicates that information is unavailable.

Wage and Tax Rate Information by State for CYQ 2007.2

State	Total Wages (000)	Total Wages (Taxed Employers) (000)	Taxable Wages (000)	Average Tax Rates on:		Current Taxable Wage Base
				Taxable Wages	Total Wages	
Alabama	\$16,902,060	\$13,814,096	\$2,780,038	1.45	0.38	\$8,000
Alaska	\$3,149,419	\$2,409,319	\$1,716,914	2.66	1.66	\$31,300
Arizona	\$26,183,053	\$21,554,994	\$3,430,247	1.50	0.34	\$7,000
Arkansas	\$9,523,024	\$7,515,041	\$2,467,722	2.34	0.81	\$10,000
California	\$186,816,444	\$149,319,965	\$19,362,619	4.23	0.77	\$7,000
Colorado	\$23,978,087	\$20,426,466	\$4,633,923	1.85	0.51	\$10,000
Connecticut	\$22,488,786	\$17,828,006	\$4,520,848	2.56	0.69	\$15,000
Delaware	\$4,723,383	\$3,819,974	\$582,159	2.24	0.47	\$10,500
District of Columbia	\$7,806,498	\$6,374,049	\$653,291	2.03	0.33	\$9,000
Florida	\$75,298,673	\$62,358,828	\$10,426,907	1.57	0.37	\$7,000
Georgia	\$40,578,398	\$34,250,783	\$6,388,229	1.60	0.39	\$8,500
Hawaii	\$5,488,088	\$4,222,771	\$3,371,568	0.99	0.69	\$13,000
Idaho	\$5,256,590	\$4,273,325	\$3,264,014	1.30	0.86	\$32,200
Illinois	\$65,701,785	\$53,521,534	\$12,362,380	3.87	1.01	\$12,000
Indiana	\$26,155,153	\$21,440,413	\$3,346,685	2.79	0.62	\$7,000
Iowa	\$12,680,983	\$9,904,804	\$6,403,598	1.57	0.84	\$22,800
Kansas	\$12,069,818	\$11,085,139	\$3,255,909	1.65	0.56	\$8,000
Kentucky	\$16,035,823	\$12,561,602	\$2,514,279	2.65	0.69	\$8,000
Louisiana	\$16,831,381	\$13,545,434	\$2,315,080	1.45	0.34	\$7,000
Maine	\$4,932,374	\$3,635,691	\$1,356,061	1.81	0.68	\$12,000
Maryland	\$27,397,516	\$21,397,875	\$3,523,309	1.89	0.42	\$8,500
Massachusetts	\$41,795,356	\$33,431,214	\$9,207,332	3.62	1.09	\$14,000
Michigan	\$43,436,444	\$34,190,055	\$6,149,429	4.71	1.10	\$9,000
Minnesota	\$28,696,042	\$22,488,939	\$12,095,633	1.70	0.81	\$25,000
Mississippi	\$8,615,323	\$6,795,055	\$1,421,665	1.43	0.40	\$7,000
Missouri	\$25,221,765	\$19,943,648	\$5,608,751	2.20	0.68	\$12,000
Montana	\$3,308,517	\$2,753,873	\$2,047,961	1.19	0.78	\$23,700
Nebraska	\$7,606,298	\$5,870,701	\$1,435,335	1.83	0.53	\$9,000
Nevada	\$12,779,566	\$11,045,312	\$7,251,131	1.43	0.82	\$24,600
New Hampshire	\$6,641,671	\$5,216,502	\$767,457	1.30	0.27	\$8,000
New Jersey	\$50,435,644	\$40,509,019	\$19,944,414	2.02	0.89	\$27,700
New Mexico	\$6,884,673	\$5,305,893	\$2,884,875	0.96	0.49	\$19,900
New York	\$111,857,107	\$83,967,952	\$10,932,251	3.58	0.58	\$8,500
North Carolina	\$37,091,589	\$30,032,891	\$14,820,617	1.90	0.83	\$18,600
North Dakota	\$2,637,508	\$1,919,896	\$1,282,266	1.19	0.66	\$22,100
Ohio	\$50,155,968	\$39,665,250	\$8,197,742	2.53	0.65	\$9,000
Oklahoma	\$12,595,041	\$10,418,395	\$4,279,502	1.20	0.49	\$13,600
Oregon	\$16,302,983	\$12,671,960	\$8,832,334	2.05	1.24	\$30,200
Pennsylvania	\$57,680,058	\$44,520,185	\$7,008,694	5.07	1.10	\$8,000
Puerto Rico	\$5,861,870	\$3,936,282	\$1,328,785	3.20	1.08	\$7,000
Rhode Island	\$4,712,603	\$3,435,798	\$1,315,400	3.35	1.28	\$14,000
South Carolina	\$16,058,277	\$12,923,288	\$2,320,946	2.16	0.54	\$7,000
South Dakota	\$2,887,031	\$2,236,921	\$581,950	0.89	0.27	\$9,000
Tennessee	\$25,322,688	\$20,939,066	\$3,240,182	1.82	0.40	\$7,000
Texas	\$107,230,180	\$90,770,680	\$17,091,129	1.98	0.48	\$9,000
Utah	\$10,574,665	\$8,735,964	\$5,737,511	1.04	0.60	\$25,400
Vermont	\$2,646,335	\$1,876,547	\$358,105	2.88	0.75	\$8,000
Virgin Islands	\$411,409	\$291,538	\$185,056	0.23	0.13	\$21,800
Virginia	\$38,281,804	\$32,121,705	\$4,834,689	1.50	0.32	\$8,000
Washington	\$30,739,474	\$24,279,924	\$16,067,483	2.10	1.23	\$31,400
West Virginia	\$5,738,796	\$4,293,039	\$1,010,164	2.79	0.80	\$8,000
Wisconsin	\$25,385,724	\$19,677,503	\$5,151,314	2.71	0.81	\$10,500
Wyoming	\$2,581,150	\$1,996,232	\$991,344	1.47	0.70	\$20,100
United States	\$1,412,170,894	\$1,133,521,337	\$283,057,229	2.48	0.69	\$11,482

Individual State Pages: 4th Quarter 2007

[Data Summary Home](#)

[Data Summary Glossary](#)

[Data Summary Mailing List](#)

[OWS Homepage](#)

Click on Desired State:

Alaska	Alabama	Arkansas	Arizona	California	Colorado
Connecticut	District of Columbia	Delaware	Florida	Georgia	Hawaii
Iowa	Idaho	Illinois	Indiana	Kansas	Kentucky
Louisiana	Massachusetts	Maryland	Maine	Michigan	Minnesota
Missouri	Mississippi	Montana	North Carolina	North Dakota	Nebraska
New Hampshire	New Jersey	New Mexico	Nevada	New York	Ohio
Oklahoma	Oregon	Pennsylvania	Puerto Rico	Rhode Island	South Carolina
South Dakota	Tennessee	Texas	Utah	Virginia	Virgin Islands
Vermont	Washington	Wisconsin	West Virginia	Wyoming	United States

Note: Blank cells appearing in any section of this report indicates that information is unavailable.

UI Data Summary for **Alabama**

CYQ: 2007.4

Benefits	(Quarterly)	Past 12 Months	Rank	High Value : Qtr		Low Value : Qtr	
Benefits Paid (000):	\$55,591	\$226,445	31	\$87,642	2002.1	\$7,540	1973.3
Initial Claims:	60,675	238,086	26	199,272	1982.1	27,174	1973.2
First Payments:	22,496	102,389	28	87,774	1982.1	11,594	1973.2
Weeks Claimed:	358,493	1,399,868	29	1,008,116	1983.1	202,249	1973.2
Wks Compensated:	295,365	1,224,202	29	843,002	1983.1	163,877	1973.4
Exhaustions:	6,960	27,844	28	23,814	1983.1	3,671	1973.4
Exhaustion Rate:		26.0%	43	35.6%	1983.3	17.4%	1990.3
Average Duration:		12.0	49	14.2	1983.2	9.2	1995.4
AWBA:	\$191.05	\$187.64	51	\$191.05	2007.4	\$40.78	1971.2
As % of AWW:	27.5		48				
Avg. Benefits per First Payment:		\$2,212					

Financial Information	Past 12 Months	Rank
State Revenues (000):	\$223,063	31
Total Wages (000)**:	\$16,902,060	24
Total Wages (Taxable Employers)(000)**:	\$13,814,096	24
Taxable Wages (000)**:	\$2,780,038	30
Avg. Weekly Wage**:	\$694.10	35
Avg. Tax Rate on Taxable Wages (%) **:	1.45	41
Avg. Tax Rate on Total Wages (%) **:	0.38	45
Calendar Yr Taxable Wage Base:	\$8,000	41
Trust Fund (TF) Balance (000):		
(Including Loans):	\$410,640	32
TF as % of Total Wages*:	0.72	37
Interest Earned (000):	\$5,182	33
Avg. High Cost Multiple +:	0.52	31
High Cost Multiple +:	0.33	33

Labor Force	(Quarterly)	Past 12 Mos	Rank
IUR (%):	1.5	1.5	37
TUR (%):	3.5	3.5	37
Total Unemp. (000):	77.8	76.8	29
Insured Unemployed (000) ***			
Regular Programs:	28.7	28.3	29
All Programs:	28.7	28.3	29
Reciency Rates (%) ***			
Regular Programs:	37	37	25
All Programs:	37	37	25
Covered Emp. (000)**:	1,905	1,889	23
Civ. Labor Force (000):	2,201	2,183	23
Subj. Employers (000):	90	90	27

Extended Benefits	(Quarterly)	Past 12 Months
Extended Benefits (000):	\$0	\$0
EB First Payments:	0	0
EB Weeks Claimed:	0	0
EB Exhaustions:	0	0

Loans	Rank
Outstanding Loan Bal (000):	\$0 2
Loan per Cov Employee:	\$0 2
Loan as % of Total Wages*:	0 2

* Based on extrapolated wages for the most recent 12 months.

** Wages and Covered Employment lag the rest of the Data Summary information by six months

*** Regular programs include State UI, UCFE and UCX.

+ Refers to most recent calendar year. Fourth and first quarter issues publish measure based on extrapolated wages. Second and third quarter issues publish measure based on actual wages.

See glossary for data definitions

Note: Blank cells appearing in any section of this report indicates that information is unavailable.

UI Data Summary for **Alaska**

CYQ: 2007.4

Benefits	(Quarterly)	Past 12 Months	Rank	High Value : Qtr		Low Value : Qtr	
Benefits Paid (000):	\$27,801	\$108,111	42	\$44,533	2004.1	\$1,663	1971.3
Initial Claims:	26,746	86,462	37	30,954	1996.1	6,230	1973.2
First Payments:	12,258	38,422	36	19,617	1977.1	2,132	1971.3
Weeks Claimed:	159,090	624,839	38	244,721	1986.1	39,062	1971.3
Wks Compensated:	139,659	551,470	37	321,508	1977.1	36,386	1971.3
Exhaustions:	3,437	15,015	38	9,445	1986.2	937	1971.3
Exhaustion Rate:		38.6%	15	56.9%	1986.4	20.2%	1976.3
Average Duration:		14.4	28	19.9	1978.1	14.1	2002.2
AWBA:	\$203.39	\$200.09	50	\$203.39	2007.4	\$46.09	1971.3
As % of AWW:	25.4		51				
Avg. Benefits per First Payment:		\$2,814					

Financial Information	Past 12 Months	Rank
State Revenues (000):	\$149,627	37
Total Wages (000)**:	\$3,149,419	48
Total Wages (Taxable Employers)(000)**:	\$2,409,319	48
Taxable Wages (000)**:	\$1,716,914	41
Avg. Weekly Wage**:	\$802.31	18
Avg. Tax Rate on Taxable Wages (%) **:	2.66	13
Avg. Tax Rate on Total Wages (%) **:	1.66	1
Calendar Yr Taxable Wage Base:	\$31,300	3
Trust Fund (TF) Balance (000):		
(Including Loans):	\$331,214	35
TF as % of Total Wages*:	3.36	3
Interest Earned (000):	\$4,006	36
Avg. High Cost Multiple +:	1.07	16
High Cost Multiple +:	0.78	13

Labor Force	(Quarterly)	Past 12 Mos	Rank
IUR (%):	3.5	3.6	1
TUR (%):	6.1	6.2	3
Total Unemp. (000):	21.3	21.7	43
Insured Unemployed (000) ***			
Regular Programs:	10.5	10.7	40
All Programs:	10.5	10.7	40
Reciency Rates (%) ***			
Regular Programs:	50	49	7
All Programs:	50	49	7
Covered Emp. (000)**:	299	292	50
Civ. Labor Force (000):	351	352	50
Subj. Employers (000):	17	17	52

Extended Benefits	(Quarterly)	Past 12 Months
Extended Benefits (000):	\$0	\$0
EB First Payments:	0	0
EB Weeks Claimed:	0	0
EB Exhaustions:	0	0

Loans	Rank
Outstanding Loan Bal (000):	\$0 2
Loan per Cov Employee:	\$0 2
Loan as % of Total Wages*:	0 2

* Based on extrapolated wages for the most recent 12 months.

** Wages and Covered Employment lag the rest of the Data Summary information by six months

*** Regular programs include State UI, UCFE and UCX.

+ Refers to most recent calendar year. Fourth and first quarter issues publish measure based on extrapolated wages. Second and third quarter issues publish measure based on actual wages.

See glossary for data definitions

Note: Blank cells appearing in any section of this report indicates that information is unavailable.

UI Data Summary for Arizona

CYQ: 2007.4

Benefits	(Quarterly)	Past 12 Months	Rank	High Value : Qtr		Low Value : Qtr	
<u>Benefits Paid (000):</u>	\$68,017	\$253,549	28	\$100,822	2002.3	\$4,271	1972.2
<u>Initial Claims:</u>	45,070	192,190	29	73,262	2003.2	19,869	1973.2
<u>First Payments:</u>	21,570	84,119	29	34,734	2003.2	6,115	1972.2
<u>Weeks Claimed:</u>	385,771	1,491,252	26	684,378	2003.3	109,406	1972.3
<u>Wks Compensated:</u>	330,230	1,269,791	26	586,784	2002.3	82,840	1972.3
<u>Exhaustions:</u>	8,534	32,228	22	17,598	2003.3	1,807	1978.4
<u>Exhaustion Rate:</u>		42.7%	7	50.4%	1975.4	22.0%	1980.1
<u>Average Duration:</u>		15.1	16	18.4	1983.3	10.7	1980.1
<u>AWBA:</u>	\$208.70	\$202.09	48	\$208.70	2007.4	\$45.53	1971.2
As % of AWW:	26.8		50				
<u>Avg. Benefits per First Payment:</u>		\$3,014					

Financial Information	Past 12 Months	Rank
<u>State Revenues (000):</u>	\$315,821	27
<u>Total Wages (000)**:</u>	\$26,183,053	18
<u>Total Wages (Taxable Employers)(000)**:</u>	\$21,554,994	16
<u>Taxable Wages (000)**:</u>	\$3,430,247	23
<u>Avg. Weekly Wage**:</u>	\$779.12	22
<u>Avg. Tax Rate on Taxable Wages (%) **:</u>	1.50	37
<u>Avg. Tax Rate on Total Wages (%) **:</u>	0.34	48
<u>Calendar Yr Taxable Wage Base:</u>	\$7,000	49
<u>Trust Fund (TF) Balance (000):</u>		
(Including Loans):	\$990,481	12
<u>TF as % of Total Wages*:</u>	1.10	25
<u>Interest Earned (000):</u>	\$12,163	12
<u>Avg. High Cost Multiple +:</u>	1.10	15
<u>High Cost Multiple +:</u>	0.44	26

Labor Force	(Quarterly)	Past 12 Mos	Rank
<u>IUR (%):</u>	1.2	1.2	42
<u>TUR (%):</u>	4.1	3.8	31
<u>Total Unemp. (000):</u>	125.3	115.4	21
Insured Unemployed (000) ***			
<u>Regular Programs:</u>	31.3	30.6	25
<u>All Programs:</u>	31.3	30.6	25
Reciency Rates (%) ***			
<u>Regular Programs:</u>	25	27	46
<u>All Programs:</u>	25	27	46
<u>Covered Emp. (000)**:</u>	2,589	2,586	20
<u>Civ. Labor Force (000):</u>	3,063	3,029	18
<u>Subj. Employers (000):</u>	134	132	19

Extended Benefits	(Quarterly)	Past 12 Months
<u>Extended Benefits (000):</u>	\$0	\$0
EB First Payments:	0	0
EB Weeks Claimed:	0	0
EB Exhaustions:	0	0

Loans	Rank
<u>Outstanding Loan Bal (000):</u>	\$0 2
Loan per Cov Employee:	\$0 2
Loan as % of Total Wages*:	0 2

* Based on extrapolated wages for the most recent 12 months.

** Wages and Covered Employment lag the rest of the Data Summary information by six months

*** Regular programs include State UI, UCFE and UCX.

+ Refers to most recent calendar year. Fourth and first quarter issues publish measure based on extrapolated wages. Second and third quarter issues publish measure based on actual wages.

See glossary for data definitions

Note: Blank cells appearing in any section of this report indicates that information is unavailable.

UI Data Summary for **Arkansas**

CYQ: 2007.4

Benefits	(Quarterly)	Past 12 Months	Rank	High Value : Qtr		Low Value : Qtr	
Benefits Paid (000):	\$75,960	\$296,553	26	\$93,583	2002.1	\$3,532	1972.3
Initial Claims:	66,910	198,782	24	103,999	1981.4	20,162	1972.2
First Payments:	27,253	83,409	24	52,817	1975.1	7,104	1973.2
Weeks Claimed:	393,881	1,535,988	25	724,967	1975.1	116,813	1973.3
Wks Compensated:	304,967	1,207,906	28	557,933	1975.1	82,739	1973.3
Exhaustions:	7,047	29,036	27	13,071	1975.2	1,808	1973.4
Exhaustion Rate:		36.0%	22	40.9%	2003.2	21.6%	1986.2
Average Duration:		14.5	24	16.1	1976.1	9.8	1974.4
AWBA:	\$262.90	\$257.42	35	\$262.90	2007.4	\$39.54	1971.1
As % of AWW:	42.0		9				
Avg. Benefits per First Payment:		\$3,555					

Financial Information	Past 12 Months	Rank
State Revenues (000):	\$257,076	29
Total Wages (000)**:	\$9,523,024	34
Total Wages (Taxable Employers)(000)**:	\$7,515,041	34
Taxable Wages (000)**:	\$2,467,722	37
Avg. Weekly Wage**:	\$625.66	47
Avg. Tax Rate on Taxable Wages (%) **:	2.34	17
Avg. Tax Rate on Total Wages (%) **:	0.81	16
Calendar Yr Taxable Wage Base:	\$10,000	27
Trust Fund (TF) Balance (000):		
(Including Loans):	\$151,132	48
TF as % of Total Wages*:	0.49	41
Interest Earned (000):	\$2,117	48
Avg. High Cost Multiple +:	0.32	41
High Cost Multiple +:	0.18	45

Labor Force	(Quarterly)	Past 12 Mos	Rank
IUR (%):	2.7	2.6	8
TUR (%):	5.2	5.4	10
Total Unemp. (000):	70.6	74.0	32
Insured Unemployed (000) ***			
Regular Programs:	30.9	30.2	26
All Programs:	30.9	30.2	26
Reciency Rates (%) ***			
Regular Programs:	44	41	12
All Programs:	44	41	12
Covered Emp. (000)**:	1,164	1,150	34
Civ. Labor Force (000):	1,366	1,368	33
Subj. Employers (000):	65	66	34

Extended Benefits	(Quarterly)	Past 12 Months
Extended Benefits (000):	\$0	\$0
EB First Payments:	0	0
EB Weeks Claimed:	0	0
EB Exhaustions:	0	0

Loans	Rank
Outstanding Loan Bal (000):	2
Loan per Cov Employee:	2
Loan as % of Total Wages*:	2

* Based on extrapolated wages for the most recent 12 months.

** Wages and Covered Employment lag the rest of the Data Summary information by six months

*** Regular programs include State UI, UCFE and UCX.

+ Refers to most recent calendar year. Fourth and first quarter issues publish measure based on extrapolated wages. Second and third quarter issues publish measure based on actual wages.

See glossary for data definitions

Note: Blank cells appearing in any section of this report indicates that information is unavailable.

UI Data Summary for California

CYQ: 2007.4

Benefits	(Quarterly)	Past 12 Months	Rank	High Value : Qtr		Low Value : Qtr	
Benefits Paid (000):	\$1,275,154	\$4,924,872	1	\$1,580,309	2003.2	\$125,689	1973.3
Initial Claims:	654,583	2,338,249	1	1,073,146	1992.1	404,986	1973.2
First Payments:	265,721	1,017,712	1	469,351	1975.1	152,420	1973.2
Weeks Claimed:	5,114,807	19,843,629	1	8,150,226	1992.1	2,522,143	1973.3
Wks Compensated:	4,358,647	17,105,507	1	7,410,743	1992.1	2,184,142	1973.3
Exhaustions:	110,004	429,715	1	184,303	2002.3	48,106	1973.4
Exhaustion Rate:		44.6%	5	50.1%	2003.2	23.7%	1979.2
Average Duration:		16.8	8	18.7	1983.4	12.4	1979.1
AWBA:	\$303.09	\$298.23	14	\$303.09	2007.4	\$53.87	1971.3
As % of AWW:	32.0		41				
Avg. Benefits per First Payment:		\$4,839					

Financial Information	Past 12 Months	Rank
State Revenues (000):	\$5,029,570	1
Total Wages (000)**:	\$186,816,444	1
Total Wages (Taxable Employers)(000)**:	\$149,319,965	1
Taxable Wages (000)**:	\$19,362,619	1
Avg. Weekly Wage**:	\$946.71	6
Avg. Tax Rate on Taxable Wages (%) **:	4.23	3
Avg. Tax Rate on Total Wages (%) **:	0.77	20
Calendar Yr Taxable Wage Base:	\$7,000	49
Trust Fund (TF) Balance (000):		
(Including Loans):	\$2,533,133	2
TF as % of Total Wages*:	0.40	44
Interest Earned (000):	\$35,141	2
Avg. High Cost Multiple +:	0.27	45
High Cost Multiple +:	0.18	45

Labor Force	(Quarterly)	Past 12 Mos	Rank
IUR (%):	2.5	2.5	9
TUR (%):	5.6	5.4	7
Total Unemp. (000):	1,029.4	979.2	1
Insured Unemployed (000) ***			
Regular Programs:	392.7	379.8	1
All Programs:	392.7	379.8	1
Reciency Rates (%) ***			
Regular Programs:	38	39	20
All Programs:	38	39	20
Covered Emp. (000)**:	15,455	15,329	1
Civ. Labor Force (000):	18,324	18,188	1
Subj. Employers (000):	1,182	1,177	1

Extended Benefits	(Quarterly)	Past 12 Months
Extended Benefits (000):	\$0	\$0
EB First Payments:	0	0
EB Weeks Claimed:	0	0
EB Exhaustions:	0	0

Loans	Rank
Outstanding Loan Bal (000):	\$0 2
Loan per Cov Employee:	\$0 2
Loan as % of Total Wages*:	0 2

* Based on extrapolated wages for the most recent 12 months.

** Wages and Covered Employment lag the rest of the Data Summary information by six months

*** Regular programs include State UI, UCFE and UCX.

+ Refers to most recent calendar year. Fourth and first quarter issues publish measure based on extrapolated wages. Second and third quarter issues publish measure based on actual wages.

See glossary for data definitions

Note: Blank cells appearing in any section of this report indicates that information is unavailable.

UI Data Summary for Colorado

CYQ: 2007.4

Benefits	(Quarterly)	Past 12 Months	Rank	High Value : Qtr		Low Value : Qtr	
<u>Benefits Paid (000):</u>	\$74,714	\$304,802	27	\$153,005	2002.1	\$2,261	1972.3
<u>Initial Claims:</u>	34,354	117,630	33	68,252	1983.1	11,717	1972.3
<u>First Payments:</u>	18,126	70,516	31	37,139	1983.1	3,945	1972.3
<u>Weeks Claimed:</u>	288,871	1,189,924	31	671,262	1983.1	66,570	1972.3
<u>Wks Compensated:</u>	226,374	945,444	31	525,948	1983.1	37,409	1972.3
<u>Exhaustions:</u>	6,931	28,353	29	17,442	2002.2	828	1972.4
<u>Exhaustion Rate:</u>		40.7%	12	62.4%	1976.1	24.4%	1978.4
<u>Average Duration:</u>		13.4	39	16.7	1975.3	9.7	1974.1
<u>AWBA:</u>	\$333.97	\$326.57	8	\$333.97	2007.4	\$58.64	1971.3
As % of AWW:	39.5		19				
<u>Avg. Benefits per First Payment:</u>		\$4,322					

Financial Information	Past 12 Months	Rank
<u>State Revenues (000):</u>	\$434,620	20
<u>Total Wages (000)**:</u>	\$23,978,087	22
<u>Total Wages (Taxable Employers)(000)**:</u>	\$20,426,466	20
<u>Taxable Wages (000)**:</u>	\$4,633,923	20
<u>Avg. Weekly Wage**:</u>	\$844.61	10
<u>Avg. Tax Rate on Taxable Wages (%) **:</u>	1.85	28
<u>Avg. Tax Rate on Total Wages (%) **:</u>	0.51	36
<u>Calendar Yr Taxable Wage Base:</u>	\$10,000	27
<u>Trust Fund (TF) Balance (000):</u>		
(Including Loans):	\$630,397	21
<u>TF as % of Total Wages*:</u>	0.74	35
<u>Interest Earned (000):</u>	\$7,772	22
<u>Avg. High Cost Multiple +:</u>	0.67	29
<u>High Cost Multiple +:</u>	0.59	22

Labor Force	(Quarterly)	Past 12 Mos	Rank
<u>IUR (%):</u>	1.0	1.0	46
<u>TUR (%):</u>	3.9	3.8	33
<u>Total Unemp. (000):</u>	108.1	103.5	23
Insured Unemployed (000) ***			
<u>Regular Programs:</u>	22.8	23.5	30
<u>All Programs:</u>	22.8	23.5	30
Reciency Rates (%) ***			
<u>Regular Programs:</u>	21	23	49
<u>All Programs:</u>	21	23	49
<u>Covered Emp. (000)**:</u>	2,242	2,214	22
<u>Civ. Labor Force (000):</u>	2,742	2,706	22
<u>Subj. Employers (000):</u>	160	158	15

Extended Benefits	(Quarterly)	Past 12 Months
<u>Extended Benefits (000):</u>	\$0	\$0
EB First Payments:	0	0
EB Weeks Claimed:	0	0
EB Exhaustions:	0	0

Loans	Rank
<u>Outstanding Loan Bal (000):</u>	\$0 2
Loan per Cov Employee:	\$0 2
Loan as % of Total Wages*:	0 2

* Based on extrapolated wages for the most recent 12 months.

** Wages and Covered Employment lag the rest of the Data Summary information by six months

*** Regular programs include State UI, UCFE and UCX.

+ Refers to most recent calendar year. Fourth and first quarter issues publish measure based on extrapolated wages. Second and third quarter issues publish measure based on actual wages.

See glossary for data definitions

Note: Blank cells appearing in any section of this report indicates that information is unavailable.

UI Data Summary for **Connecticut**

CYQ: 2007.4

Benefits	(Quarterly)	Past 12 Months	Rank	High Value : Qtr		Low Value : Qtr	
Benefits Paid (000):	\$130,905	\$579,027	18	\$232,930	2003.1	\$23,568	1973.4
Initial Claims:	59,130	215,404	27	158,726	1975.1	33,893	1988.2
First Payments:	28,171	121,285	23	92,026	1975.1	14,892	1987.2
Weeks Claimed:	466,493	2,078,414	22	1,196,204	1975.1	194,676	1987.4
Wks Compensated:	436,387	1,951,427	20	1,157,832	1975.2	191,037	1987.4
Exhaustions:	9,494	38,354	21	26,941	1975.3	2,849	1980.1
Exhaustion Rate:		31.9%	30	40.1%	1993.3	12.3%	1979.2
Average Duration:		16.1	12	18.7	1992.4	10.2	1974.1
AWBA:	\$315.37	\$309.98	10	\$319.20	2007.1	\$61.34	1971.3
As % of AWW:	29.0		46				
Avg. Benefits per First Payment:		\$4,774					

Financial Information	Past 12 Months	Rank
State Revenues (000):	\$551,645	18
Total Wages (000)**:	\$22,488,786	23
Total Wages (Taxable Employers)(000)**:	\$17,828,006	23
Taxable Wages (000)**:	\$4,520,848	22
Avg. Weekly Wage**:	\$1,087.47	3
Avg. Tax Rate on Taxable Wages (%) **:	2.56	15
Avg. Tax Rate on Total Wages (%) **:	0.69	25
Calendar Yr Taxable Wage Base:	\$15,000	16
Trust Fund (TF) Balance (000):		
(Including Loans):	\$598,111	22
TF as % of Total Wages*:	0.76	34
Interest Earned (000):	\$7,644	23
Avg. High Cost Multiple +:	0.54	30
High Cost Multiple +:	0.23	42

Labor Force	(Quarterly)	Past 12 Mos	Rank
IUR (%):	2.1	2.4	14
TUR (%):	4.5	4.6	20
Total Unemp. (000):	83.5	85.0	27
Insured Unemployed (000) ***			
Regular Programs:	35.0	39.2	23
All Programs:	35.0	39.2	23
Reciency Rates (%) ***			
Regular Programs:	42	46	14
All Programs:	42	46	14
Covered Emp. (000)**:	1,677	1,659	28
Civ. Labor Force (000):	1,875	1,865	28
Subj. Employers (000):	99	99	25

Extended Benefits	(Quarterly)	Past 12 Months
Extended Benefits (000):	\$0	\$0
EB First Payments:	0	0
EB Weeks Claimed:	0	0
EB Exhaustions:	0	0

Loans	Rank
Outstanding Loan Bal (000):	\$0 2
Loan per Cov Employee:	\$0 2
Loan as % of Total Wages*:	0 2

* Based on extrapolated wages for the most recent 12 months.

** Wages and Covered Employment lag the rest of the Data Summary information by six months

*** Regular programs include State UI, UCFE and UCX.

+ Refers to most recent calendar year. Fourth and first quarter issues publish measure based on extrapolated wages. Second and third quarter issues publish measure based on actual wages.

See glossary for data definitions

Note: Blank cells appearing in any section of this report indicates that information is unavailable.

UI Data Summary for Delaware

CYQ: 2007.4

Benefits	(Quarterly)	Past 12 Months	Rank	<u>High Value : Qtr</u>		<u>Low Value : Qtr</u>	
Benefits Paid (000):	\$24,987	\$105,413	43	\$37,777	2003.1	\$1,884	1972.4
Initial Claims:	14,291	63,006	48	27,988	1974.4	6,192	1973.2
First Payments:	5,667	23,873	48	17,084	1975.1	2,130	1987.2
Weeks Claimed:	98,335	446,064	46	217,510	1975.1	27,787	1987.4
Wks Compensated:	97,907	411,174	41	225,281	1975.1	26,548	1987.4
Exhaustions:	2,042	7,952	44	5,341	1975.2	256	1988.2
Exhaustion Rate:		33.9%	26	44.8%	1976.1	10.5%	1989.3
Average Duration:		17.2	6	19.1	1976.1	9.7	1986.1
AWBA:	\$254.11	\$255.83	38	\$258.02	2007.1	\$50.54	1971.4
As % of AWW:	28.3		47				
Avg. Benefits per First Payment:		\$4,416					

Financial Information	Past 12 Months	Rank
State Revenues (000):	\$84,353	47
Total Wages (000)**:	\$4,723,383	45
Total Wages (Taxable Employers)(000)**:	\$3,819,974	44
Taxable Wages (000)**:	\$582,159	50
Avg. Weekly Wage**:	\$897.85	7
Avg. Tax Rate on Taxable Wages (%) **:	2.24	18
Avg. Tax Rate on Total Wages (%) **:	0.47	40
Calendar Yr Taxable Wage Base:	\$10,500	25
Trust Fund (TF) Balance (000):		
(Including Loans):	\$174,156	46
TF as % of Total Wages*:	1.10	26
Interest Earned (000):	\$2,196	46
Avg. High Cost Multiple +:	0.91	23
High Cost Multiple +:	0.43	28

Labor Force	(Quarterly)	Past 12 Mos	Rank
IUR (%):	2.0	2.1	23
TUR (%):	3.2	3.4	41
Total Unemp. (000):	14.4	14.9	48
Insured Unemployed (000) ***			
Regular Programs:	7.6	8.6	44
All Programs:	7.6	8.6	44
Reciency Rates (%) ***			
Regular Programs:	53	57	5
All Programs:	53	57	5
Covered Emp. (000)**:	419	417	47
Civ. Labor Force (000):	445	443	46
Subj. Employers (000):	27	27	47

Extended Benefits	(Quarterly)	Past 12 Months
Extended Benefits (000):	\$0	\$0
EB First Payments:	0	0
EB Weeks Claimed:	0	0
EB Exhaustions:	0	0

Loans	Rank
Outstanding Loan Bal (000):	2
Loan per Cov Employee:	2
Loan as % of Total Wages*:	2

* Based on extrapolated wages for the most recent 12 months.

** Wages and Covered Employment lag the rest of the Data Summary information by six months

*** Regular programs include State UI, UCFE and UCX.

+ Refers to most recent calendar year. Fourth and first quarter issues publish measure based on extrapolated wages. Second and third quarter issues publish measure based on actual wages.

See glossary for data definitions

Note: Blank cells appearing in any section of this report indicates that information is unavailable.

UI Data Summary for District of Columbia

CYQ: 2007.4

Benefits	(Quarterly)	Past 12 Months	Rank	High Value : Qtr		Low Value : Qtr	
<u>Benefits Paid (000):</u>	\$23,734	\$90,462	44	\$39,715	2002.1	\$4,732	1971.4
<u>Initial Claims:</u>	7,674	28,389	50	15,303	1975.2	3,624	2005.4
<u>First Payments:</u>	4,305	16,952	49	11,131	1975.3	2,779	2003.2
<u>Weeks Claimed:</u>	99,809	372,773	44	205,018	1975.3	48,862	2006.2
<u>Wks Compensated:</u>	84,667	323,980	45	201,986	1975.3	66,758	2000.4
<u>Exhaustions:</u>	2,427	9,057	40	5,220	1991.3	1,310	1971.1
<u>Exhaustion Rate:</u>		54.5%	1	93.7%	2003.2	37.4%	1979.2
<u>Average Duration:</u>		19.1	1	32.6	2003.2	15.7	2001.4
<u>AWBA:</u>	\$287.02	\$286.20	26	\$314.28	2002.1	\$57.77	1971.1
As % of AWW:	22.4		53				
<u>Avg. Benefits per First Payment:</u>		\$5,336					

Financial Information		Past 12 Months	Rank
<u>State Revenues (000):</u>		\$107,726	44
<u>Total Wages (000)**:</u>	\$7,806,498	\$32,185,260	36
<u>Total Wages (Taxable Employers)(000)**:</u>	\$6,374,049	\$26,296,159	36
<u>Taxable Wages (000)**:</u>	\$653,291	\$4,308,868	47
<u>Avg. Weekly Wage**:</u>		\$1,280.14	1
<u>Avg. Tax Rate on Taxable Wages (%) **:</u>		2.03	23
<u>Avg. Tax Rate on Total Wages (%) **:</u>		0.33	49
<u>Calendar Yr Taxable Wage Base:</u>		\$9,000	31
<u>Trust Fund (TF) Balance (000):</u>			
(Including Loans):	\$400,275		33
<u>TF as % of Total Wages*:</u>	1.47		19
<u>Interest Earned (000):</u>	\$4,883		34
<u>Avg. High Cost Multiple +:</u>	1.11		14
<u>High Cost Multiple +:</u>	0.80		12

Labor Force	(Quarterly)	Past 12 Mos	Rank
<u>IUR (%):</u>	1.0	0.9	30
<u>TUR (%):</u>	5.7	5.7	6
<u>Total Unemp. (000):</u>	18.5	18.5	45
Insured Unemployed (000) ***			
<u>Regular Programs:</u>	4.8	4.6	49
<u>All Programs:</u>	4.8	4.6	49
Reciprocity Rates (%) ***			
<u>Regular Programs:</u>	26	25	44
<u>All Programs:</u>	26	25	44
<u>Covered Emp. (000)**:</u>	488	484	44
<u>Civ. Labor Force (000):</u>	326	326	51
<u>Subj. Employers (000):</u>	29	29	46

Extended Benefits	(Quarterly)	Past 12 Months	
<u>Extended Benefits (000):</u>	\$0	\$0	
EB First Payments:	0	0	
EB Weeks Claimed:	0	0	
EB Exhaustions:	0	0	

Loans		Rank
<u>Outstanding Loan Bal (000):</u>	\$0	2
Loan per Cov Employee:	\$0	2
Loan as % of Total Wages*:	0	2

* Based on extrapolated wages for the most recent 12 months.

** Wages and Covered Employment lag the rest of the Data Summary information by six months

*** Regular programs include State UI, UCFE and UCX.

+ Refers to most recent calendar year. Fourth and first quarter issues publish measure based on extrapolated wages. Second and third quarter issues publish measure based on actual wages.

See glossary for data definitions

Note: Blank cells appearing in any section of this report indicates that information is unavailable.

UI Data Summary for Florida

CYQ: 2007.4

Benefits	(Quarterly)	Past 12 Months	Rank	High Value : Qtr		Low Value : Qtr	
<u>Benefits Paid (000):</u>	\$330,163	\$1,118,340	8	\$330,163	2007.4	\$7,873	1973.2
<u>Initial Claims:</u>	167,208	617,796	9	192,201	2004.3	47,634	1972.4
<u>First Payments:</u>	91,856	330,266	6	106,053	2001.4	13,559	1973.1
<u>Weeks Claimed:</u>	1,659,649	5,672,310	5	2,038,601	1993.3	290,942	1973.2
<u>Wks Compensated:</u>	1,396,836	4,760,521	4	1,514,491	1992.3	161,460	1973.1
<u>Exhaustions:</u>	39,542	131,714	3	53,422	1975.3	5,076	1973.2
<u>Exhaustion Rate:</u>		47.1%	3	62.4%	1975.2	33.8%	1984.3
<u>Average Duration:</u>		14.4	25	16.4	1993.1	10.5	1974.1
<u>AWBA:</u>	\$239.02	\$237.41	41	\$239.02	2007.4	\$38.12	1971.1
As % of AWW:	32.1		40				
<u>Avg. Benefits per First Payment:</u>		\$3,386					

Financial Information	Past 12 Months	Rank
<u>State Revenues (000):</u>	\$924,404	12
<u>Total Wages (000)**:</u>	\$75,298,673	4
<u>Total Wages (Taxable Employers)(000)**:</u>	\$62,358,828	4
<u>Taxable Wages (000)**:</u>	\$10,426,907	5
<u>Avg. Weekly Wage**:</u>	\$745.01	24
<u>Avg. Tax Rate on Taxable Wages (%) **:</u>	1.57	36
<u>Avg. Tax Rate on Total Wages (%) **:</u>	0.37	46
<u>Calendar Yr Taxable Wage Base:</u>	\$7,000	49
<u>Trust Fund (TF) Balance (000):</u>		
(Including Loans):	\$2,203,889	3
<u>TF as % of Total Wages*:</u>	0.85	31
<u>Interest Earned (000):</u>	\$28,044	3
<u>Avg. High Cost Multiple +:</u>	1.04	17
<u>High Cost Multiple +:</u>	0.46	24

Labor Force	(Quarterly)	Past 12 Mos	Rank
<u>IUR (%):</u>	1.6	1.4	29
<u>TUR (%):</u>	4.4	4.0	23
<u>Total Unemp. (000):</u>	403.7	368.5	4
Insured Unemployed (000) ***			
<u>Regular Programs:</u>	130.4	112.0	4
<u>All Programs:</u>	130.4	112.0	4
Reciency Rates (%) ***			
<u>Regular Programs:</u>	32	30	30
<u>All Programs:</u>	32	30	30
<u>Covered Emp. (000)**:</u>	7,874	7,859	4
<u>Civ. Labor Force (000):</u>	9,215	9,148	4
<u>Subj. Employers (000):</u>	503	498	2

Extended Benefits	(Quarterly)	Past 12 Months
<u>Extended Benefits (000):</u>	\$0	\$0
EB First Payments:	0	0
EB Weeks Claimed:	0	0
EB Exhaustions:	0	0

Loans	Rank
<u>Outstanding Loan Bal (000):</u>	\$0 2
Loan per Cov Employee:	\$0 2
Loan as % of Total Wages*:	0 2

* Based on extrapolated wages for the most recent 12 months.

** Wages and Covered Employment lag the rest of the Data Summary information by six months

*** Regular programs include State UI, UCFE and UCX.

+ Refers to most recent calendar year. Fourth and first quarter issues publish measure based on extrapolated wages. Second and third quarter issues publish measure based on actual wages.

See glossary for data definitions

Note: Blank cells appearing in any section of this report indicates that information is unavailable.

UI Data Summary for Georgia

CYQ: 2007.4

Benefits	(Quarterly)	Past 12 Months	Rank	High Value : Qtr		Low Value : Qtr	
Benefits Paid (000):	\$164,252	\$604,261	14	\$218,168	2002.1	\$6,287	1972.4
Initial Claims:	135,744	469,479	13	293,875	1982.1	24,591	1973.2
First Payments:	60,265	211,871	12	157,459	1975.1	9,055	1973.2
Weeks Claimed:	817,119	2,868,018	13	1,526,729	1975.1	182,945	1972.4
Wks Compensated:	639,761	2,365,438	13	1,376,688	1975.1	137,491	1972.4
Exhaustions:	18,713	71,490	10	47,966	1975.2	4,870	1972.4
Exhaustion Rate:		35.5%	23	54.9%	1975.2	19.6%	1990.3
Average Duration:		11.2	53	14.1	1976.1	8.2	1986.2
AWBA:	\$265.01	\$262.74	34	\$265.01	2007.4	\$43.29	1971.1
As % of AWW:	33.6		36				
Avg. Benefits per First Payment:		\$2,852					

Financial Information	Past 12 Months	Rank
State Revenues (000):	\$546,641	19
Total Wages (000)**:	\$40,578,398	11
Total Wages (Taxable Employers)(000)**:	\$34,250,783	9
Taxable Wages (000)**:	\$6,388,229	13
Avg. Weekly Wage**:	\$788.47	19
Avg. Tax Rate on Taxable Wages (%) **:	1.60	34
Avg. Tax Rate on Total Wages (%) **:	0.39	44
Calendar Yr Taxable Wage Base:	\$8,500	35
Trust Fund (TF) Balance (000):		
(Including Loans):	\$1,281,787	10
TF as % of Total Wages*:	0.90	30
Interest Earned (000):	\$16,045	10
Avg. High Cost Multiple +:	0.96	21
High Cost Multiple +:	0.42	29

Labor Force	(Quarterly)	Past 12 Mos	Rank
IUR (%):	1.6	1.4	31
TUR (%):	4.4	4.4	21
Total Unemp. (000):	215.5	211.9	9
Insured Unemployed (000) ***			
Regular Programs:	66.1	58.4	13
All Programs:	66.1	58.4	13
Reciency Rates (%) ***			
Regular Programs:	31	28	33
All Programs:	31	28	33
Covered Emp. (000)**:	3,995	3,963	10
Civ. Labor Force (000):	4,854	4,815	9
Subj. Employers (000):	217	215	10

Extended Benefits	(Quarterly)	Past 12 Months
Extended Benefits (000):	\$0	\$0
EB First Payments:	0	0
EB Weeks Claimed:	0	0
EB Exhaustions:	0	0

Loans	Rank
Outstanding Loan Bal (000):	\$0 2
Loan per Cov Employee:	\$0 2
Loan as % of Total Wages*:	0 2

* Based on extrapolated wages for the most recent 12 months.

** Wages and Covered Employment lag the rest of the Data Summary information by six months

*** Regular programs include State UI, UCFE and UCX.

+ Refers to most recent calendar year. Fourth and first quarter issues publish measure based on extrapolated wages. Second and third quarter issues publish measure based on actual wages.

See glossary for data definitions

Note: Blank cells appearing in any section of this report indicates that information is unavailable.

UI Data Summary for Hawaii

CYQ: 2007.4

Benefits	(Quarterly)	Past 12 Months	Rank	High Value : Qtr		Low Value : Qtr	
<u>Benefits Paid (000):</u>	\$31,881	\$115,884	37	\$53,765	2001.4	\$6,426	1972.3
<u>Initial Claims:</u>	16,458	59,016	45	35,479	2001.4	10,200	1990.3
<u>First Payments:</u>	5,912	23,217	46	18,185	2001.4	4,105	1989.4
<u>Weeks Claimed:</u>	98,528	366,060	45	241,177	1976.1	57,623	1989.4
<u>Wks Compensated:</u>	84,237	312,105	46	224,118	1976.1	51,372	1989.4
<u>Exhaustions:</u>	1,366	4,972	47	5,073	1976.3	728	1989.4
<u>Exhaustion Rate:</u>		23.6%	46	43.7%	1976.4	16.3%	1990.1
<u>Average Duration:</u>		13.4	38	19.2	2002.4	11.1	1991.1
<u>AWBA:</u>	\$392.94	\$384.00	1	\$392.94	2007.4	\$63.43	1971.1
As % of AWW:	54.6		1				
<u>Avg. Benefits per First Payment:</u>		\$4,991					

Financial Information	Past 12 Months	Rank
<u>State Revenues (000):</u>	\$117,892	41
<u>Total Wages (000)**:</u>	\$5,488,088	42
<u>Total Wages (Taxable Employers)(000)**:</u>	\$4,222,771	42
<u>Taxable Wages (000)**:</u>	\$3,371,568	34
<u>Avg. Weekly Wage**:</u>	\$720.19	29
<u>Avg. Tax Rate on Taxable Wages (%) **:</u>	0.99	50
<u>Avg. Tax Rate on Total Wages (%) **:</u>	0.69	24
<u>Calendar Yr Taxable Wage Base:</u>	\$13,000	20
<u>Trust Fund (TF) Balance (000):</u>		
(Including Loans):	\$556,334	26
<u>TF as % of Total Wages*:</u>	3.17	6
<u>Interest Earned (000):</u>	\$6,788	28
<u>Avg. High Cost Multiple +:</u>	1.88	1
<u>High Cost Multiple +:</u>	1.50	2

Labor Force	(Quarterly)	Past 12 Mos	Rank
<u>IUR (%):</u>	1.2	1.2	41
<u>TUR (%):</u>	2.8	2.7	48
<u>Total Unemp. (000):</u>	18.0	17.2	46
<u>Insured Unemployed (000) ***</u>			
<u>Regular Programs:</u>	7.6	7.0	45
<u>All Programs:</u>	7.6	7.0	45
<u>Reciency Rates (%) ***</u>			
<u>Regular Programs:</u>	42	41	13
<u>All Programs:</u>	42	41	13
<u>Covered Emp. (000)**:</u>	594	591	42
<u>Civ. Labor Force (000):</u>	647	649	43
<u>Subj. Employers (000):</u>	31	31	45

Extended Benefits	(Quarterly)	Past 12 Months
<u>Extended Benefits (000):</u>	\$0	\$0
EB First Payments:	0	0
EB Weeks Claimed:	0	0
EB Exhaustions:	0	0

Loans	Rank
<u>Outstanding Loan Bal (000):</u>	2
Loan per Cov Employee:	2
Loan as % of Total Wages*:	2

* Based on extrapolated wages for the most recent 12 months.

** Wages and Covered Employment lag the rest of the Data Summary information by six months

*** Regular programs include State UI, UCFE and UCX.

+ Refers to most recent calendar year. Fourth and first quarter issues publish measure based on extrapolated wages. Second and third quarter issues publish measure based on actual wages.

See glossary for data definitions

Note: Blank cells appearing in any section of this report indicates that information is unavailable.

UI Data Summary for **Idaho**

CYQ: 2007.4

Benefits	(Quarterly)	Past 12 Months	Rank	High Value : Qtr		Low Value : Qtr	
Benefits Paid (000):	\$31,679	\$123,992	38	\$69,429	2002.1	\$1,990	1972.4
Initial Claims:	36,204	95,412	32	47,070	2001.4	8,753	1972.3
First Payments:	13,822	45,360	33	23,010	2003.1	3,784	1971.2
Weeks Claimed:	173,670	617,529	36	353,845	2003.1	63,956	1972.4
Wks Compensated:	126,919	513,324	38	313,570	2002.1	40,048	1972.4
Exhaustions:	2,355	10,797	41	9,096	1983.1	920	1972.4
Exhaustion Rate:		25.9%	44	52.6%	1983.2	22.0%	1979.3
Average Duration:		11.3	51	15.3	1982.4	10.1	1978.4
AWBA:	\$262.80	\$254.97	36	\$262.80	2007.4	\$45.31	1971.3
As % of AWW:	41.9		10				
Avg. Benefits per First Payment:		\$2,734					

Financial Information	Past 12 Months	Rank
State Revenues (000):	\$134,944	39
Total Wages (000)**:	\$5,256,590	43
Total Wages (Taxable Employers)(000)**:	\$4,273,325	41
Taxable Wages (000)**:	\$3,264,014	35
Avg. Weekly Wage**:	\$627.25	46
Avg. Tax Rate on Taxable Wages (%) **:	1.30	45
Avg. Tax Rate on Total Wages (%) **:	0.86	11
Calendar Yr Taxable Wage Base:	\$32,200	1
Trust Fund (TF) Balance (000):		
(Including Loans):	\$196,048	44
TF as % of Total Wages*:	1.10	24
Interest Earned (000):	\$2,456	44
Avg. High Cost Multiple +:	0.46	34
High Cost Multiple +:	0.35	32

Labor Force	(Quarterly)	Past 12 Mos	Rank
IUR (%):	2.1	2.0	16
TUR (%):	2.5	2.7	52
Total Unemp. (000):	19.1	20.5	44
Insured Unemployed (000) ***			
Regular Programs:	14.0	12.7	35
All Programs:	14.0	12.7	35
Reciency Rates (%) ***			
Regular Programs:	73	62	1
All Programs:	73	62	1
Covered Emp. (000)**:	654	641	40
Civ. Labor Force (000):	757	754	40
Subj. Employers (000):	51	51	37

Extended Benefits	(Quarterly)	Past 12 Months
Extended Benefits (000):	\$0	\$0
EB First Payments:	0	0
EB Weeks Claimed:	0	0
EB Exhaustions:	0	0

Loans	Rank
Outstanding Loan Bal (000):	\$0 2
Loan per Cov Employee:	\$0 2
Loan as % of Total Wages*:	0 2

* Based on extrapolated wages for the most recent 12 months.

** Wages and Covered Employment lag the rest of the Data Summary information by six months

*** Regular programs include State UI, UCFE and UCX.

+ Refers to most recent calendar year. Fourth and first quarter issues publish measure based on extrapolated wages. Second and third quarter issues publish measure based on actual wages.

See glossary for data definitions

Note: Blank cells appearing in any section of this report indicates that information is unavailable.

UI Data Summary for **Illinois**

CYQ: 2007.4

Benefits	(Quarterly)	Past 12 Months	Rank	High Value : Qtr		Low Value : Qtr	
Benefits Paid (000):	\$420,733	\$1,857,317	5	\$759,769	2002.1	\$33,425	1973.3
Initial Claims:	217,653	711,433	5	366,762	1982.1	111,476	1973.2
First Payments:	92,957	352,686	5	210,346	1975.1	45,457	1973.4
Weeks Claimed:	1,685,041	6,982,566	4	3,764,106	1983.1	714,895	1973.4
Wks Compensated:	1,392,337	6,103,930	6	3,334,960	1983.1	563,654	1973.4
Exhaustions:	31,614	124,091	7	83,792	1982.4	12,720	1972.4
Exhaustion Rate:		36.1%	21	53.3%	1983.3	26.9%	2000.4
Average Duration:		17.3	5	21.6	1983.4	11.7	1975.1
AWBA:	\$303.34	\$305.47	13	\$319.25	2007.1	\$51.05	1971.3
As % of AWW:	34.0		35				
Avg. Benefits per First Payment:		\$5,266					

Financial Information	Past 12 Months	Rank
State Revenues (000):	\$2,304,528	4
Total Wages (000)**:	\$65,701,785	5
Total Wages (Taxable Employers)(000)**:	\$53,521,534	5
Taxable Wages (000)**:	\$12,362,380	6
Avg. Weekly Wage**:	\$892.70	8
Avg. Tax Rate on Taxable Wages (%) **:	3.87	4
Avg. Tax Rate on Total Wages (%) **:	1.01	9
Calendar Yr Taxable Wage Base:	\$12,000	22
Trust Fund (TF) Balance (000):		
(Including Loans):	\$1,801,983	5
TF as % of Total Wages*:	0.79	33
Interest Earned (000):	\$22,886	6
Avg. High Cost Multiple +:	0.34	39
High Cost Multiple +:	0.30	35

Labor Force	(Quarterly)	Past 12 Mos	Rank
IUR (%):	2.2	2.3	13
TUR (%):	5.0	5.0	14
Total Unemp. (000):	334.1	335.6	6
Insured Unemployed (000) ***			
Regular Programs:	128.9	133.3	5
All Programs:	128.9	133.3	5
Reciency Rates (%) ***			
Regular Programs:	39	40	19
All Programs:	39	40	19
Covered Emp. (000)**:	5,822	5,762	5
Civ. Labor Force (000):	6,733	6,697	5
Subj. Employers (000):	299	297	5

Extended Benefits	(Quarterly)	Past 12 Months
Extended Benefits (000):	\$0	\$0
EB First Payments:	0	0
EB Weeks Claimed:	0	0
EB Exhaustions:	0	0

Loans	Rank
Outstanding Loan Bal (000):	\$0 2
Loan per Cov Employee:	\$0 2
Loan as % of Total Wages*:	0 2

* Based on extrapolated wages for the most recent 12 months.

** Wages and Covered Employment lag the rest of the Data Summary information by six months

*** Regular programs include State UI, UCFE and UCX.

+ Refers to most recent calendar year. Fourth and first quarter issues publish measure based on extrapolated wages. Second and third quarter issues publish measure based on actual wages.

See glossary for data definitions

Note: Blank cells appearing in any section of this report indicates that information is unavailable.

UI Data Summary for Indiana

CYQ: 2007.4

Benefits	(Quarterly)	Past 12 Months	Rank	High Value : Qtr		Low Value : Qtr	
Benefits Paid (000):	\$157,803	\$702,307	16	\$241,928	2007.1	\$8,800	1973.3
Initial Claims:	139,363	422,550	12	239,452	1975.1	42,913	1994.2
First Payments:	48,727	186,575	15	135,044	1975.1	14,237	1976.3
Weeks Claimed:	680,551	2,911,885	15	1,563,934	1975.1	234,695	1973.3
Wks Compensated:	559,578	2,485,735	15	1,367,828	1975.1	199,188	1973.4
Exhaustions:	17,115	76,367	13	37,884	1975.2	4,727	1988.4
Exhaustion Rate:		40.3%	13	44.0%	2003.4	20.6%	1990.3
Average Duration:		13.3	40	16.0	1983.4	8.6	1974.1
AWBA:	\$289.61	\$290.24	22	\$298.20	2007.1	\$40.32	1971.2
As % of AWW:	40.9		14				
Avg. Benefits per First Payment:		\$3,764					

Financial Information	Past 12 Months	Rank
State Revenues (000):	\$565,019	17
Total Wages (000)**:	\$26,155,153	17
Total Wages (Taxable Employers)(000)**:	\$21,440,413	17
Taxable Wages (000)**:	\$3,346,685	26
Avg. Weekly Wage**:	\$707.51	33
Avg. Tax Rate on Taxable Wages (%) **:	2.79	11
Avg. Tax Rate on Total Wages (%) **:	0.62	30
Calendar Yr Taxable Wage Base:	\$7,000	49
Trust Fund (TF) Balance (000):		
(Including Loans):	\$306,787	36
TF as % of Total Wages*:	0.35	47
Interest Earned (000):	\$4,458	35
Avg. High Cost Multiple +:	0.29	44
High Cost Multiple +:	0.20	43

Labor Force	(Quarterly)	Past 12 Mos	Rank
IUR (%):	1.8	2.0	21
TUR (%):	4.2	4.5	26
Total Unemp. (000):	135.8	145.9	16
Insured Unemployed (000) ***			
Regular Programs:	52.4	56.5	15
All Programs:	52.4	56.5	15
Reciency Rates (%) ***			
Regular Programs:	39	39	18
All Programs:	39	39	18
Covered Emp. (000)**:	2,890	2,861	14
Civ. Labor Force (000):	3,204	3,211	15
Subj. Employers (000):	130	130	21

Extended Benefits	(Quarterly)	Past 12 Months
Extended Benefits (000):	\$0	\$0
EB First Payments:	0	0
EB Weeks Claimed:	0	0
EB Exhaustions:	0	0

Loans	Rank
Outstanding Loan Bal (000):	\$0 2
Loan per Cov Employee:	\$0 2
Loan as % of Total Wages*:	0 2

* Based on extrapolated wages for the most recent 12 months.

** Wages and Covered Employment lag the rest of the Data Summary information by six months

*** Regular programs include State UI, UCFE and UCX.

+ Refers to most recent calendar year. Fourth and first quarter issues publish measure based on extrapolated wages. Second and third quarter issues publish measure based on actual wages.

See glossary for data definitions

Note: Blank cells appearing in any section of this report indicates that information is unavailable.

UI Data Summary for Iowa

CYQ: 2007.4

Benefits

	(Quarterly)	Past 12 Months	Rank	High Value : Qtr		Low Value : Qtr	
Benefits Paid (000):	\$66,485	\$329,639	29	\$136,849	2003.1	\$4,418	1972.4
Initial Claims:	67,321	187,018	23	91,605	1982.1	15,337	1974.2
First Payments:	22,618	91,367	27	63,848	1982.1	6,856	1974.2
Weeks Claimed:	295,680	1,290,831	30	762,074	1983.1	104,815	1974.3
Wks Compensated:	236,568	1,176,569	30	728,215	1983.1	79,526	1973.4
Exhaustions:	4,818	22,305	33	17,724	1983.1	1,761	1973.4
Exhaustion Rate:		23.1%	47	46.5%	1975.3	13.6%	1979.4
Average Duration:		12.9	43	15.8	1983.2	10.6	1999.2
AWBA:	\$295.15	\$292.55	17	\$297.57	2007.1	\$52.22	1971.3
As % of AWW:	44.2		5				
Avg. Benefits per First Payment:		\$3,608					

Financial Information

	Past 12 Months	Rank
State Revenues (000):	\$346,767	26
Total Wages (000)**:	\$12,680,983	30
Total Wages (Taxable Employers)(000)**:	\$9,904,804	32
Taxable Wages (000)**:	\$6,403,598	21
Avg. Weekly Wage**:	\$667.78	40
Avg. Tax Rate on Taxable Wages (%) **:	1.57	35
Avg. Tax Rate on Total Wages (%) **:	0.84	12
Calendar Yr Taxable Wage Base:	\$22,800	10
Trust Fund (TF) Balance (000):		
(Including Loans):	\$740,178	17
TF as % of Total Wages*:	1.81	16
Interest Earned (000):	\$9,050	17
Avg. High Cost Multiple +:	0.89	24
High Cost Multiple +:	0.69	19

Labor Force

	(Quarterly)	Past 12 Mos	Rank
IUR (%):	1.5	1.7	33
TUR (%):	3.7	3.8	36
Total Unemp. (000):	61.6	62.7	34
Insured Unemployed (000) ***			
Regular Programs:	22.8	24.9	31
All Programs:	22.8	24.9	31
Reciency Rates (%) ***			
Regular Programs:	37	40	24
All Programs:	37	40	24
Covered Emp. (000)**:	1,480	1,459	30
Civ. Labor Force (000):	1,668	1,661	30
Subj. Employers (000):	72	72	30

Extended Benefits

	(Quarterly)	Past 12 Months
Extended Benefits (000):	\$0	\$0
EB First Payments:	0	0
EB Weeks Claimed:	0	0
EB Exhaustions:	0	0

Loans

		Rank
Outstanding Loan Bal (000):	\$0	2
Loan per Cov Employee:	\$0	2
Loan as % of Total Wages*:	0	2

* Based on extrapolated wages for the most recent 12 months.

** Wages and Covered Employment lag the rest of the Data Summary information by six months

*** Regular programs include State UI, UCFE and UCX.

+ Refers to most recent calendar year. Fourth and first quarter issues publish measure based on extrapolated wages. Second and third quarter issues publish measure based on actual wages.

See glossary for data definitions

Note: Blank cells appearing in any section of this report indicates that information is unavailable.

UI Data Summary for **Kansas**

CYQ: 2007.4

Benefits	(Quarterly)	Past 12 Months	Rank	<u>High Value : Qtr</u>		<u>Low Value : Qtr</u>	
Benefits Paid (000):	\$56,479	\$235,490	30	\$105,996	2003.1	\$3,919	1973.3
Initial Claims:	39,007	137,682	30	58,971	1983.1	12,849	1973.2
First Payments:	12,972	58,451	34	32,068	1982.1	6,024	1973.2
Weeks Claimed:	229,806	929,161	33	507,786	1983.1	94,003	1973.3
Wks Compensated:	186,678	790,688	33	473,467	1982.3	74,015	1973.3
Exhaustions:	4,338	17,134	34	16,294	1983.1	1,499	1973.4
Exhaustion Rate:		29.1%	39	48.1%	1983.3	20.6%	1980.1
Average Duration:		13.5	35	18.4	1983.3	10.7	1974.1
AWBA:	\$306.69	\$302.08	11	\$306.69	2007.4	\$50.55	1971.3
As % of AWW:	44.1		6				
Avg. Benefits per First Payment:		\$4,029					

Financial Information	Past 12 Months	Rank
State Revenues (000):	\$234,727	30
Total Wages (000)**:	\$12,069,818	32
Total Wages (Taxable Employers)(000)**:	\$11,085,139	29
Taxable Wages (000)**:	\$3,255,909	29
Avg. Weekly Wage**:	\$695.69	34
Avg. Tax Rate on Taxable Wages (%) **:	1.65	33
Avg. Tax Rate on Total Wages (%) **:	0.56	33
Calendar Yr Taxable Wage Base:	\$8,000	41
Trust Fund (TF) Balance (000):		
(Including Loans):	\$637,983	20
TF as % of Total Wages*:	1.40	20
Interest Earned (000):	\$7,890	20
Avg. High Cost Multiple +:	0.96	21
High Cost Multiple +:	0.71	18

Labor Force	(Quarterly)	Past 12 Mos	Rank
IUR (%):	1.3	1.4	39
TUR (%):	3.8	4.1	35
Total Unemp. (000):	56.4	60.1	35
Insured Unemployed (000) ***			
Regular Programs:	17.7	17.9	34
All Programs:	17.7	17.9	34
Reciency Rates (%) ***			
Regular Programs:	31	30	32
All Programs:	31	30	32
Covered Emp. (000)**:	1,336	1,317	31
Civ. Labor Force (000):	1,480	1,479	31
Subj. Employers (000):	71	71	31

Extended Benefits	(Quarterly)	Past 12 Months
Extended Benefits (000):	\$0	\$0
EB First Payments:	0	0
EB Weeks Claimed:	0	0
EB Exhaustions:	0	0

Loans	Rank
Outstanding Loan Bal (000):	2
Loan per Cov Employee:	2
Loan as % of Total Wages*:	2

* Based on extrapolated wages for the most recent 12 months.

** Wages and Covered Employment lag the rest of the Data Summary information by six months

*** Regular programs include State UI, UCFE and UCX.

+ Refers to most recent calendar year. Fourth and first quarter issues publish measure based on extrapolated wages. Second and third quarter issues publish measure based on actual wages.

See glossary for data definitions

Note: Blank cells appearing in any section of this report indicates that information is unavailable.

UI Data Summary for Kentucky

CYQ: 2007.4

Benefits	(Quarterly)	Past 12 Months	Rank	<u>High Value : Qtr</u>		<u>Low Value : Qtr</u>	
Benefits Paid (000):	\$103,476	\$423,885	20	\$148,652	2003.1	\$7,436	1972.3
Initial Claims:	98,319	302,323	18	170,954	1994.1	25,015	1973.2
First Payments:	28,829	114,861	21	110,332	1994.1	11,096	1972.2
Weeks Claimed:	373,533	1,577,863	28	1,029,444	1983.1	169,408	1973.3
Wks Compensated:	367,249	1,545,966	24	974,059	1983.1	147,330	1973.3
Exhaustions:	6,166	24,790	30	20,572	1983.1	2,882	1972.4
Exhaustion Rate:		21.3%	49	39.4%	1983.1	12.8%	1995.2
Average Duration:		13.5	36	18.6	1983.4	8.9	1994.1
AWBA:	\$292.15	\$284.14	21	\$292.15	2007.4	\$46.26	1971.2
As % of AWW:	42.8		8				
Avg. Benefits per First Payment:		\$3,690					

Financial Information	Past 12 Months	Rank
State Revenues (000):	\$367,223	24
Total Wages (000)**:	\$16,035,823	28
Total Wages (Taxable Employers)(000)**:	\$12,561,602	28
Taxable Wages (000)**:	\$2,514,279	31
Avg. Weekly Wage**:	\$683.34	39
Avg. Tax Rate on Taxable Wages (%) **:	2.65	14
Avg. Tax Rate on Total Wages (%) **:	0.69	23
Calendar Yr Taxable Wage Base:	\$8,000	41
Trust Fund (TF) Balance (000):		
(Including Loans):	\$230,766	42
TF as % of Total Wages*:	0.45	43
Interest Earned (000):	\$3,061	40
Avg. High Cost Multiple +:	0.21	49
High Cost Multiple +:	0.16	46

Labor Force	(Quarterly)	Past 12 Mos	Rank
IUR (%):	1.7	1.8	28
TUR (%):	5.0	5.5	13
Total Unemp. (000):	101.4	111.7	25
Insured Unemployed (000) ***			
Regular Programs:	30.5	32.0	27
All Programs:	30.5	32.0	27
Reciency Rates (%) ***			
Regular Programs:	30	29	34
All Programs:	30	29	34
Covered Emp. (000)**:	1,781	1,753	26
Civ. Labor Force (000):	2,042	2,044	25
Subj. Employers (000):	86	86	28

Extended Benefits	(Quarterly)	Past 12 Months
Extended Benefits (000):	\$0	\$0
EB First Payments:	0	0
EB Weeks Claimed:	0	0
EB Exhaustions:	0	0

Loans	Rank
Outstanding Loan Bal (000):	\$0 2
Loan per Cov Employee:	\$0 2
Loan as % of Total Wages*:	0 2

* Based on extrapolated wages for the most recent 12 months.

** Wages and Covered Employment lag the rest of the Data Summary information by six months

*** Regular programs include State UI, UCFE and UCX.

+ Refers to most recent calendar year. Fourth and first quarter issues publish measure based on extrapolated wages. Second and third quarter issues publish measure based on actual wages.

See glossary for data definitions

Note: Blank cells appearing in any section of this report indicates that information is unavailable.

UI Data Summary for Louisiana

CYQ: 2007.4

Benefits	(Quarterly)	Past 12 Months	Rank	High Value : Qtr		Low Value : Qtr	
<u>Benefits Paid (000):</u>	\$39,892	\$167,209	34	\$472,654	2005.4	\$11,866	1972.3
<u>Initial Claims:</u>	32,992	127,164	35	228,256	2005.3	30,169	2007.3
<u>First Payments:</u>	14,189	55,079	32	144,081	2005.3	12,250	2007.2
<u>Weeks Claimed:</u>	243,812	1,037,029	32	2,775,877	2005.4	243,812	2007.4
<u>Wks Compensated:</u>	195,535	827,014	32	2,477,795	2005.4	195,524	2007.2
<u>Exhaustions:</u>	5,063	22,684	31	70,297	2006.1	4,215	1998.4
<u>Exhaustion Rate:</u>		40.7%	11	63.1%	1987.1	19.5%	2007.1
<u>Average Duration:</u>		15.0	18	27.1	2006.4	7.9	2005.3
<u>AWBA:</u>	\$206.41	\$204.21	49	\$206.88	2007.2	\$45.89	1971.1
As % of AWW:	29.0		45				
<u>Avg. Benefits per First Payment:</u>		\$3,036					

Financial Information	Past 12 Months	Rank
<u>State Revenues (000):</u>	\$181,418	36
<u>Total Wages (000)**:</u>	\$16,831,381	25
<u>Total Wages (Taxable Employers)(000)**:</u>	\$13,545,434	25
<u>Taxable Wages (000)**:</u>	\$2,315,080	32
<u>Avg. Weekly Wage**:</u>	\$711.22	32
<u>Avg. Tax Rate on Taxable Wages (%) **:</u>	1.45	40
<u>Avg. Tax Rate on Total Wages (%) **:</u>	0.34	47
<u>Calendar Yr Taxable Wage Base:</u>	\$7,000	49
<u>Trust Fund (TF) Balance (000):</u>		
(Including Loans):	\$1,444,768	8
<u>TF as % of Total Wages*:</u>	2.54	10
<u>Interest Earned (000):</u>	\$17,537	8
<u>Avg. High Cost Multiple +:</u>	0.93	22
<u>High Cost Multiple +:</u>	0.82	11

Labor Force	(Quarterly)	Past 12 Mos	Rank
<u>IUR (%):</u>	1.1	1.2	43
<u>TUR (%):</u>	3.5	3.8	38
<u>Total Unemp. (000):</u>	70.8	76.5	31
<u>Insured Unemployed (000) ***</u>			
<u>Regular Programs:</u>	20.1	20.7	32
<u>All Programs:</u>	20.1	20.7	32
<u>Reciency Rates (%) ***</u>			
<u>Regular Programs:</u>	28	27	37
<u>All Programs:</u>	28	27	37
<u>Covered Emp. (000)**:</u>	1,841	1,812	25
<u>Civ. Labor Force (000):</u>	2,012	1,998	26
<u>Subj. Employers (000):</u>	102	102	24

Extended Benefits	(Quarterly)	Past 12 Months
<u>Extended Benefits (000):</u>	\$2	\$28
EB First Payments:	2	36
EB Weeks Claimed:	4	63
EB Exhaustions:	0	3

Loans	Rank
<u>Outstanding Loan Bal (000):</u>	\$0 2
Loan per Cov Employee:	\$0 2
Loan as % of Total Wages*:	0 2

* Based on extrapolated wages for the most recent 12 months.

** Wages and Covered Employment lag the rest of the Data Summary information by six months

*** Regular programs include State UI, UCFE and UCX.

+ Refers to most recent calendar year. Fourth and first quarter issues publish measure based on extrapolated wages. Second and third quarter issues publish measure based on actual wages.

See glossary for data definitions

Note: Blank cells appearing in any section of this report indicates that information is unavailable.

UI Data Summary for Maine

CYQ: 2007.4

Benefits	(Quarterly)	Past 12 Months	Rank	<u>High Value : Qtr</u>		<u>Low Value : Qtr</u>	
Benefits Paid (000):	\$23,339	\$113,962	45	\$59,871	1991.1	\$4,084	1973.4
Initial Claims:	20,390	67,076	41	55,565	1991.1	10,710	2007.3
First Payments:	8,541	32,545	41	35,621	1975.1	4,372	2000.3
Weeks Claimed:	113,795	534,493	43	443,727	1991.1	83,258	2000.3
Wks Compensated:	93,424	460,326	43	385,026	1991.1	65,703	2000.3
Exhaustions:	2,113	9,877	43	10,511	1975.2	1,314	1988.4
Exhaustion Rate:		30.3%	37	64.5%	1983.3	19.9%	1988.3
Average Duration:		14.1	29	18.7	1983.3	10.1	1980.1
AWBA:	\$257.45	\$254.10	37	\$257.45	2007.4	\$46.43	1971.3
As % of AWW:	39.6		18				
Avg. Benefits per First Payment:		\$3,502					

Financial Information	Past 12 Months	Rank
State Revenues (000):	\$107,699	45
Total Wages (000)**:	\$4,932,374	44
Total Wages (Taxable Employers)(000)**:	\$3,635,691	45
Taxable Wages (000)**:	\$1,356,061	42
Avg. Weekly Wage**:	\$649.94	44
Avg. Tax Rate on Taxable Wages (%) **:	1.81	31
Avg. Tax Rate on Total Wages (%) **:	0.68	26
Calendar Yr Taxable Wage Base:	\$12,000	22
Trust Fund (TF) Balance (000):		
(Including Loans):	\$479,164	29
TF as % of Total Wages*:	3.19	5
Interest Earned (000):	\$5,845	31
Avg. High Cost Multiple +:	1.64	4
High Cost Multiple +:	1.12	7

Labor Force	(Quarterly)	Past 12 Mos	Rank
IUR (%):	1.5	1.8	35
TUR (%):	4.7	4.7	17
Total Unemp. (000):	33.0	33.4	38
Insured Unemployed (000) ***			
Regular Programs:	9.0	10.5	42
All Programs:	9.0	10.5	42
Reciency Rates (%) ***			
Regular Programs:	27	32	40
All Programs:	27	32	40
Covered Emp. (000)**:	589	586	43
Civ. Labor Force (000):	704	705	42
Subj. Employers (000):	43	43	40

Extended Benefits	(Quarterly)	Past 12 Months
Extended Benefits (000):	\$0	\$0
EB First Payments:	0	0
EB Weeks Claimed:	0	0
EB Exhaustions:	0	0

Loans	Rank
Outstanding Loan Bal (000):	\$0 2
Loan per Cov Employee:	\$0 2
Loan as % of Total Wages*:	0 2

* Based on extrapolated wages for the most recent 12 months.

** Wages and Covered Employment lag the rest of the Data Summary information by six months

*** Regular programs include State UI, UCFE and UCX.

+ Refers to most recent calendar year. Fourth and first quarter issues publish measure based on extrapolated wages. Second and third quarter issues publish measure based on actual wages.

See glossary for data definitions

Note: Blank cells appearing in any section of this report indicates that information is unavailable.

UI Data Summary for **Maryland**

CYQ: 2007.4

Benefits	(Quarterly)	Past 12 Months	Rank	High Value : Qtr		Low Value : Qtr	
Benefits Paid (000):	\$114,699	\$433,349	19	\$152,928	1992.1	\$12,029	1973.3
Initial Claims:	62,686	209,741	25	118,620	1975.1	38,277	1973.2
First Payments:	28,614	105,654	22	70,645	1975.1	14,868	1973.2
Weeks Claimed:	464,828	1,785,404	23	1,021,835	1992.1	269,003	1973.4
Wks Compensated:	402,789	1,556,214	23	850,921	1982.1	202,353	1973.4
Exhaustions:	8,449	31,546	23	19,819	1975.3	3,394	1973.4
Exhaustion Rate:		31.7%	32	38.7%	1975.3	18.4%	1979.3
Average Duration:		14.7	22	17.9	1992.1	11.4	1974.4
AWBA:	\$288.89	\$282.22	23	\$288.89	2007.4	\$52.82	1971.2
As % of AWW:	33.0		39				
Avg. Benefits per First Payment:		\$4,102					

Financial Information	Past 12 Months	Rank
State Revenues (000):	\$404,962	22
Total Wages (000)**:	\$27,397,516	16
Total Wages (Taxable Employers)(000)**:	\$21,397,875	18
Taxable Wages (000)**:	\$3,523,309	25
Avg. Weekly Wage**:	\$876.87	9
Avg. Tax Rate on Taxable Wages (%) **:	1.89	27
Avg. Tax Rate on Total Wages (%) **:	0.42	41
Calendar Yr Taxable Wage Base:	\$8,500	35
Trust Fund (TF) Balance (000):		
(Including Loans):	\$1,016,659	11
TF as % of Total Wages*:	1.14	23
Interest Earned (000):	\$12,691	11
Avg. High Cost Multiple +:	0.78	27
High Cost Multiple +:	0.52	23

Labor Force	(Quarterly)	Past 12 Mos	Rank
IUR (%):	1.6	1.5	36
TUR (%):	3.4	3.6	40
Total Unemp. (000):	102.4	106.8	24
Insured Unemployed (000) ***			
Regular Programs:	38.8	37.5	21
All Programs:	38.8	37.5	21
Reciency Rates (%) ***			
Regular Programs:	38	35	22
All Programs:	38	35	22
Covered Emp. (000)**:	2,440	2,415	21
Civ. Labor Force (000):	2,983	2,980	20
Subj. Employers (000):	143	143	16

Extended Benefits	(Quarterly)	Past 12 Months
Extended Benefits (000):	\$0	\$0
EB First Payments:	0	0
EB Weeks Claimed:	0	0
EB Exhaustions:	0	0

Loans	Rank
Outstanding Loan Bal (000):	\$0 2
Loan per Cov Employee:	\$0 2
Loan as % of Total Wages*:	0 2

* Based on extrapolated wages for the most recent 12 months.

** Wages and Covered Employment lag the rest of the Data Summary information by six months

*** Regular programs include State UI, UCFE and UCX.

+ Refers to most recent calendar year. Fourth and first quarter issues publish measure based on extrapolated wages. Second and third quarter issues publish measure based on actual wages.

See glossary for data definitions

Note: Blank cells appearing in any section of this report indicates that information is unavailable.

UI Data Summary for **Massachusetts**

CYQ: 2007.4

Benefits	(Quarterly)	Past 12 Months	Rank	High Value : Qtr		Low Value : Qtr	
Benefits Paid (000):	\$331,909	\$1,453,684	7	\$634,981	2002.1	\$46,838	1972.4
Initial Claims:	122,120	404,425	15	250,766	1974.4	65,733	1997.3
First Payments:	49,707	218,551	14	157,733	1975.1	30,738	1987.2
Weeks Claimed:	1,003,784	4,363,508	11	2,382,332	1975.1	556,699	1987.4
Wks Compensated:	883,476	3,931,837	10	2,159,531	1975.1	518,866	1987.4
Exhaustions:	18,607	75,570	11	48,214	1975.2	10,557	1984.4
Exhaustion Rate:		35.0%	25	47.3%	2003.2	24.2%	1985.3
Average Duration:		18.0	4	20.4	1992.1	14.2	1985.2
AWBA:	\$384.70	\$378.60	2	\$384.70	2007.4	\$56.86	1971.2
As % of AWW:	37.3		28				
Avg. Benefits per First Payment:		\$6,651					

Financial Information	Past 12 Months	Rank
State Revenues (000):	\$1,578,772	7
Total Wages (000)**:	\$41,795,356	10
Total Wages (Taxable Employers)(000)**:	\$33,431,214	11
Taxable Wages (000)**:	\$9,207,332	11
Avg. Weekly Wage**:	\$1,031.77	4
Avg. Tax Rate on Taxable Wages (%) **:	3.62	5
Avg. Tax Rate on Total Wages (%) **:	1.09	7
Calendar Yr Taxable Wage Base:	\$14,000	18
Trust Fund (TF) Balance (000):		
(Including Loans):	\$1,290,297	9
TF as % of Total Wages*:	0.90	29
Interest Earned (000):	\$16,336	9
Avg. High Cost Multiple +:	0.50	32
High Cost Multiple +:	0.28	37

Labor Force	(Quarterly)	Past 12 Mos	Rank
IUR (%):	2.4	2.6	11
TUR (%):	3.9	4.5	34
Total Unemp. (000):	133.5	152.6	18
Insured Unemployed (000) ***			
Regular Programs:	76.5	82.6	11
All Programs:	76.5	82.6	11
Reciency Rates (%) ***			
Regular Programs:	57	54	4
All Programs:	57	54	4
Covered Emp. (000)**:	3,204	3,164	13
Civ. Labor Force (000):	3,396	3,408	14
Subj. Employers (000):	186	185	14

Extended Benefits	(Quarterly)	Past 12 Months
Extended Benefits (000):	\$0	\$0
EB First Payments:	0	0
EB Weeks Claimed:	0	0
EB Exhaustions:	0	0

Loans	Rank
Outstanding Loan Bal (000):	\$0 2
Loan per Cov Employee:	\$0 2
Loan as % of Total Wages*:	0 2

* Based on extrapolated wages for the most recent 12 months.

** Wages and Covered Employment lag the rest of the Data Summary information by six months

*** Regular programs include State UI, UCFE and UCX.

+ Refers to most recent calendar year. Fourth and first quarter issues publish measure based on extrapolated wages. Second and third quarter issues publish measure based on actual wages.

See glossary for data definitions

Note: Blank cells appearing in any section of this report indicates that information is unavailable.

UI Data Summary for Michigan

CYQ: 2007.4

Benefits	(Quarterly)	Past 12 Months	Rank	High Value : Qtr		Low Value : Qtr	
Benefits Paid (000):	\$397,087	\$1,849,071	6	\$667,851	2004.1	\$37,946	1973.3
Initial Claims:	289,270	910,939	3	631,661	1980.2	107,765	1999.2
First Payments:	102,979	435,659	4	302,813	1975.1	45,089	1973.2
Weeks Claimed:	1,626,751	7,343,560	6	4,570,735	1975.1	850,960	2000.2
Wks Compensated:	1,393,819	6,467,251	5	4,105,400	1975.1	659,905	1973.4
Exhaustions:	33,860	153,995	5	97,918	1975.2	17,145	2000.3
Exhaustion Rate:		33.5%	27	46.6%	1981.1	18.4%	2000.4
Average Duration:		14.8	19	18.1	1980.4	10.1	2001.1
AWBA:	\$294.45	\$293.07	19	\$295.13	2007.1	\$57.21	1971.4
As % of AWW:	35.9		31				
Avg. Benefits per First Payment:		\$4,244					

Financial Information	Past 12 Months	Rank
State Revenues (000):	\$1,624,370	6
Total Wages (000)**:	\$43,436,444	9
Total Wages (Taxable Employers)(000)**:	\$34,190,055	10
Taxable Wages (000)**:	\$6,149,429	14
Avg. Weekly Wage**:	\$820.25	16
Avg. Tax Rate on Taxable Wages (%) **:	4.71	2
Avg. Tax Rate on Total Wages (%) **:	1.10	6
Calendar Yr Taxable Wage Base:	\$9,000	31
Trust Fund (TF) Balance (000):		
(Including Loans):	\$31,111	51
TF as % of Total Wages*:	0.02	53
Interest Earned (000):	\$718	51
Avg. High Cost Multiple +:	N.A.	53
High Cost Multiple +:	N.A.	53

Labor Force	(Quarterly)	Past 12 Mos	Rank
IUR (%):	3.0	3.4	3
TUR (%):	7.0	7.2	2
Total Unemp. (000):	349.5	360.1	5
Insured Unemployed (000) ***			
Regular Programs:	126.5	141.9	6
All Programs:	126.5	141.9	6
Reciency Rates (%) ***			
Regular Programs:	36	39	26
All Programs:	36	39	26
Covered Emp. (000)**:	4,166	4,147	8
Civ. Labor Force (000):	4,997	5,020	8
Subj. Employers (000):	224	222	9

Extended Benefits	(Quarterly)	Past 12 Months
Extended Benefits (000):	\$0	\$0
EB First Payments:	0	0
EB Weeks Claimed:	0	0
EB Exhaustions:	0	0

Loans	Rank
Outstanding Loan Bal (000):	\$134,600 1
Loan per Cov Employee:	\$32 1
Loan as % of Total Wages*:	0.0949 1

* Based on extrapolated wages for the most recent 12 months.

** Wages and Covered Employment lag the rest of the Data Summary information by six months

*** Regular programs include State UI, UCFE and UCX.

+ Refers to most recent calendar year. Fourth and first quarter issues publish measure based on extrapolated wages. Second and third quarter issues publish measure based on actual wages.

See glossary for data definitions

Note: Blank cells appearing in any section of this report indicates that information is unavailable.

UI Data Summary for **Minnesota**

CYQ: 2007.4

Benefits	(Quarterly)	Past 12 Months	Rank	<u>High Value : Qtr</u>		<u>Low Value : Qtr</u>	
Benefits Paid (000):	\$158,414	\$756,032	15	\$297,915	2002.1	\$10,434	1971.3
Initial Claims:	87,053	279,968	19	111,066	1982.4	30,305	1973.2
First Payments:	35,600	141,724	17	68,591	1975.1	14,570	1973.3
Weeks Claimed:	620,410	2,698,733	16	1,087,887	1983.1	257,773	1973.3
Wks Compensated:	482,918	2,320,715	17	1,008,063	1983.1	199,220	1973.3
Exhaustions:	10,737	47,472	18	29,103	1983.1	4,658	1978.3
Exhaustion Rate:		32.9%	29	51.9%	1975.3	22.5%	2000.4
Average Duration:		16.4	9	18.2	1983.3	13.0	1980.1
AWBA:	\$335.37	\$340.78	7	\$348.47	2007.1	\$48.42	1971.3
As % of AWW:	40.5		16				
Avg. Benefits per First Payment:		\$5,335					

Financial Information	Past 12 Months	Rank
State Revenues (000):	\$864,059	13
Total Wages (000)**:	\$28,696,042	15
Total Wages (Taxable Employers)(000)**:	\$22,488,939	15
Taxable Wages (000)**:	\$12,095,633	9
Avg. Weekly Wage**:	\$829.15	15
Avg. Tax Rate on Taxable Wages (%) **:	1.70	32
Avg. Tax Rate on Total Wages (%) **:	0.81	15
Calendar Yr Taxable Wage Base:	\$25,000	7
Trust Fund (TF) Balance (000):		
(Including Loans):	\$545,587	27
TF as % of Total Wages*:	0.59	39
Interest Earned (000):	\$6,959	27
Avg. High Cost Multiple +:	0.38	37
High Cost Multiple +:	0.30	35

Labor Force	(Quarterly)	Past 12 Mos	Rank
IUR (%):	1.8	1.9	24
TUR (%):	4.3	4.6	25
Total Unemp. (000):	126.0	133.8	20
Insured Unemployed (000) ***			
Regular Programs:	47.9	51.6	16
All Programs:	47.9	51.6	16
Reciency Rates (%) ***			
Regular Programs:	38	39	21
All Programs:	38	39	21
Covered Emp. (000)**:	2,661	2,638	19
Civ. Labor Force (000):	2,929	2,931	21
Subj. Employers (000):	136	136	18

Extended Benefits	(Quarterly)	Past 12 Months
Extended Benefits (000):	\$0	\$0
EB First Payments:	0	0
EB Weeks Claimed:	0	0
EB Exhaustions:	0	0

Loans	Rank
Outstanding Loan Bal (000):	\$0 2
Loan per Cov Employee:	\$0 2
Loan as % of Total Wages*:	0 2

* Based on extrapolated wages for the most recent 12 months.

** Wages and Covered Employment lag the rest of the Data Summary information by six months

*** Regular programs include State UI, UCFE and UCX.

+ Refers to most recent calendar year. Fourth and first quarter issues publish measure based on extrapolated wages. Second and third quarter issues publish measure based on actual wages.

See glossary for data definitions

Note: Blank cells appearing in any section of this report indicates that information is unavailable.

UI Data Summary for Mississippi

CYQ: 2007.4

Benefits	(Quarterly)	Past 12 Months	Rank	High Value : Qtr		Low Value : Qtr	
Benefits Paid (000):	\$31,368	\$135,115	39	\$99,628	2005.4	\$1,738	1972.4
Initial Claims:	36,470	135,493	31	111,429	1982.1	10,210	1972.3
First Payments:	12,960	54,172	35	46,604	1982.1	3,605	1972.3
Weeks Claimed:	226,284	970,027	34	687,309	1983.1	64,694	1972.4
Wks Compensated:	183,028	787,125	34	545,032	1983.1	43,771	1972.4
Exhaustions:	5,031	17,651	32	13,945	2006.1	903	1973.4
Exhaustion Rate:		31.5%	33	37.6%	1983.3	19.3%	1974.3
Average Duration:		14.5	23	16.9	2006.4	8.5	1974.4
AWBA:	\$177.13	\$176.72	52	\$202.61	2005.4	\$31.97	1974.1
As % of AWW:	29.6		44				
Avg. Benefits per First Payment:		\$2,494					

Financial Information	Past 12 Months	Rank
State Revenues (000):	\$110,908	42
Total Wages (000)**:	\$8,615,323	35
Total Wages (Taxable Employers)(000)**:	\$6,795,055	35
Taxable Wages (000)**:	\$1,421,665	38
Avg. Weekly Wage**:	\$598.40	50
Avg. Tax Rate on Taxable Wages (%) **:	1.43	42
Avg. Tax Rate on Total Wages (%) **:	0.40	43
Calendar Yr Taxable Wage Base:	\$7,000	49
Trust Fund (TF) Balance (000):		
(Including Loans):	\$727,918	18
TF as % of Total Wages*:	2.60	8
Interest Earned (000):	\$8,906	19
Avg. High Cost Multiple +:	1.70	3
High Cost Multiple +:	1.32	4

Labor Force	(Quarterly)	Past 12 Mos	Rank
IUR (%):	1.7	1.8	32
TUR (%):	6.0	6.3	5
Total Unemp. (000):	80.0	83.1	28
Insured Unemployed (000) ***			
Regular Programs:	18.7	19.9	33
All Programs:	18.7	19.9	33
Reciency Rates (%) ***			
Regular Programs:	23	24	48
All Programs:	23	24	48
Covered Emp. (000)**:	1,110	1,104	35
Civ. Labor Force (000):	1,326	1,315	36
Subj. Employers (000):	56	56	36

Extended Benefits	(Quarterly)	Past 12 Months
Extended Benefits (000):	\$0	\$0
EB First Payments:	0	0
EB Weeks Claimed:	0	0
EB Exhaustions:	0	0

Loans	Rank
Outstanding Loan Bal (000):	\$0 2
Loan per Cov Employee:	\$0 2
Loan as % of Total Wages*:	0 2

* Based on extrapolated wages for the most recent 12 months.

** Wages and Covered Employment lag the rest of the Data Summary information by six months

*** Regular programs include State UI, UCFE and UCX.

+ Refers to most recent calendar year. Fourth and first quarter issues publish measure based on extrapolated wages. Second and third quarter issues publish measure based on actual wages.

See glossary for data definitions

Note: Blank cells appearing in any section of this report indicates that information is unavailable.

UI Data Summary for **Missouri**

CYQ: 2007.4

Benefits	(Quarterly)	Past 12 Months	Rank	High Value : Qtr		Low Value : Qtr	
Benefits Paid (000):	\$95,426	\$428,255	24	\$174,057	2002.1	\$13,289	1973.3
Initial Claims:	105,637	369,566	17	230,473	1975.1	61,852	1972.2
First Payments:	31,349	139,265	19	102,722	1975.1	21,081	1972.2
Weeks Claimed:	536,071	2,400,473	18	1,390,771	1975.1	368,393	1973.3
Wks Compensated:	426,646	1,950,293	21	1,168,718	1975.1	267,636	1973.3
Exhaustions:	10,063	41,745	20	30,085	1975.3	5,746	1973.4
Exhaustion Rate:		29.3%	38	43.2%	2004.2	22.6%	2000.4
Average Duration:		14.0	30	16.6	2004.1	10.4	1979.3
AWBA:	\$229.59	\$224.81	45	\$229.59	2007.4	\$49.06	1971.3
As % of AWW:	32.0		42				
Avg. Benefits per First Payment:		\$3,075					

Financial Information	Past 12 Months	Rank
State Revenues (000):	\$578,668	16
Total Wages (000)**:	\$25,221,765	21
Total Wages (Taxable Employers)(000)**:	\$19,943,648	21
Taxable Wages (000)**:	\$5,608,751	18
Avg. Weekly Wage**:	\$718.53	30
Avg. Tax Rate on Taxable Wages (%) **:	2.20	19
Avg. Tax Rate on Total Wages (%) **:	0.68	27
Calendar Yr Taxable Wage Base:	\$12,000	22
Trust Fund (TF) Balance (000):		
(Including Loans):	\$113,246	50
TF as % of Total Wages*:	0.14	51
Interest Earned (000):	\$1,572	50
Avg. High Cost Multiple +:	0.12	51
High Cost Multiple +:	0.07	51

Labor Force	(Quarterly)	Past 12 Mos	Rank
IUR (%):	1.6	1.8	34
TUR (%):	5.1	5.0	12
Total Unemp. (000):	153.5	152.8	12
Insured Unemployed (000) ***			
Regular Programs:	43.0	47.7	18
All Programs:	43.0	47.7	18
Reciency Rates (%) ***			
Regular Programs:	28	31	38
All Programs:	28	31	38
Covered Emp. (000)**:	2,696	2,658	18
Civ. Labor Force (000):	3,028	3,031	19
Subj. Employers (000):	140	139	17

Extended Benefits	(Quarterly)	Past 12 Months
Extended Benefits (000):	\$0	\$0
EB First Payments:	0	0
EB Weeks Claimed:	0	0
EB Exhaustions:	0	0

Loans	Rank
Outstanding Loan Bal (000):	\$0 2
Loan per Cov Employee:	\$0 2
Loan as % of Total Wages*:	0 2

* Based on extrapolated wages for the most recent 12 months.

** Wages and Covered Employment lag the rest of the Data Summary information by six months

*** Regular programs include State UI, UCFE and UCX.

+ Refers to most recent calendar year. Fourth and first quarter issues publish measure based on extrapolated wages. Second and third quarter issues publish measure based on actual wages.

See glossary for data definitions

Note: Blank cells appearing in any section of this report indicates that information is unavailable.

UI Data Summary for **Montana**

CYQ: **2007.4**

Benefits	(Quarterly)	Past 12 Months	Rank	High Value : Qtr		Low Value : Qtr	
Benefits Paid (000):	\$15,691	\$67,622	49	\$29,706	2004.1	\$1,267	1971.3
Initial Claims:	17,549	47,601	43	23,928	1982.4	7,063	2006.3
First Payments:	6,643	20,903	44	14,506	1982.1	2,169	1971.3
Weeks Claimed:	90,797	363,576	47	218,479	1983.1	47,952	1973.3
Wks Compensated:	69,392	310,204	48	184,305	1983.1	31,660	1971.3
Exhaustions:	1,428	6,612	46	5,570	1983.1	1,032	1971.4
Exhaustion Rate:		31.9%	31	46.0%	1983.3	25.2%	1978.3
Average Duration:		14.8	20	16.3	2004.2	12.2	1979.1
AWBA:	\$231.22	\$227.79	44	\$236.93	2007.2	\$37.87	1971.2
As % of AWW:	39.3		22				
Avg. Benefits per First Payment:		\$3,235					

Financial Information	Past 12 Months	Rank
State Revenues (000):	\$89,796	46
Total Wages (000)**:	\$3,308,517	47
Total Wages (Taxable Employers)(000)**:	\$2,753,873	47
Taxable Wages (000)**:	\$2,047,961	39
Avg. Weekly Wage**:	\$588.87	51
Avg. Tax Rate on Taxable Wages (%) **:	1.19	47
Avg. Tax Rate on Total Wages (%) **:	0.78	19
Calendar Yr Taxable Wage Base:	\$23,700	9
Trust Fund (TF) Balance (000):		
(Including Loans):	\$280,512	37
TF as % of Total Wages*:	2.47	11
Interest Earned (000):	\$3,402	37
Avg. High Cost Multiple +:	1.45	8
High Cost Multiple +:	0.82	11

Labor Force	(Quarterly)	Past 12 Mos	Rank
IUR (%):	1.7	1.8	26
TUR (%):	3.2	3.1	42
Total Unemp. (000):	15.8	15.7	47
Insured Unemployed (000) ***			
Regular Programs:	7.6	7.6	46
All Programs:	7.6	7.6	46
Reciency Rates (%) ***			
Regular Programs:	48	48	10
All Programs:	48	48	10
Covered Emp. (000)**:	428	418	46
Civ. Labor Force (000):	500	501	45
Subj. Employers (000):	38	37	42

Extended Benefits	(Quarterly)	Past 12 Months
Extended Benefits (000):	\$0	\$0
EB First Payments:	0	0
EB Weeks Claimed:	0	0
EB Exhaustions:	0	0

Loans	Rank
Outstanding Loan Bal (000):	\$0 2
Loan per Cov Employee:	\$0 2
Loan as % of Total Wages*:	0 2

* Based on extrapolated wages for the most recent 12 months.

** Wages and Covered Employment lag the rest of the Data Summary information by six months

*** Regular programs include State UI, UCFE and UCX.

+ Refers to most recent calendar year. Fourth and first quarter issues publish measure based on extrapolated wages. Second and third quarter issues publish measure based on actual wages.

See glossary for data definitions

Note: Blank cells appearing in any section of this report indicates that information is unavailable.

UI Data Summary for **Nebraska**

CYQ: 2007.4

Benefits

	(Quarterly)	Past 12 Months	Rank	High Value : Qtr		Low Value : Qtr	
Benefits Paid (000):	\$19,899	\$90,993	46	\$40,183	2003.1	\$2,319	1971.3
Initial Claims:	20,871	68,360	39	29,750	1982.4	7,244	1972.2
First Payments:	7,757	32,420	42	22,141	1975.1	3,557	1972.2
Weeks Claimed:	117,536	516,800	41	314,764	1983.1	51,311	1972.3
Wks Compensated:	87,913	399,634	44	282,568	1983.1	45,263	1978.3
Exhaustions:	3,598	14,837	37	6,938	1983.1	917	1977.4
Exhaustion Rate:		44.1%	6	47.3%	1975.2	23.7%	1989.1
Average Duration:		12.3	48	15.4	1976.1	10.3	1980.2
AWBA:	\$233.44	\$234.29	43	\$238.99	2007.1	\$42.90	1971.3
As % of AWW:	35.7		32				
Avg. Benefits per First Payment:		\$2,807					

Financial Information

	Past 12 Months	Rank
State Revenues (000):	\$127,333	40
Total Wages (000)**:	\$7,606,298	37
Total Wages (Taxable Employers)(000)**:	\$5,870,701	37
Taxable Wages (000)**:	\$1,435,335	40
Avg. Weekly Wage**:	\$653.18	43
Avg. Tax Rate on Taxable Wages (%) **:	1.83	29
Avg. Tax Rate on Total Wages (%) **:	0.53	35
Calendar Yr Taxable Wage Base:	\$9,000	31
Trust Fund (TF) Balance (000):		
(Including Loans):	\$278,865	38
TF as % of Total Wages*:	1.16	22
Interest Earned (000):	\$3,401	38
Avg. High Cost Multiple +:	1.21	11
High Cost Multiple +:	0.74	14

Labor Force

	(Quarterly)	Past 12 Mos	Rank
IUR (%):	1.0	1.1	45
TUR (%):	2.8	3.0	47
Total Unemp. (000):	27.4	29.7	41
Insured Unemployed (000) ***			
Regular Programs:	8.9	9.9	43
All Programs:	8.9	9.9	43
Reciency Rates (%) ***			
Regular Programs:	32	33	29
All Programs:	32	33	29
Covered Emp. (000)**:	905	892	37
Civ. Labor Force (000):	984	983	37
Subj. Employers (000):	48	48	38

Extended Benefits

	(Quarterly)	Past 12 Months
Extended Benefits (000):	\$0	\$0
EB First Payments:	0	0
EB Weeks Claimed:	0	0
EB Exhaustions:	0	0

Loans

	Rank
Outstanding Loan Bal (000):	2
Loan per Cov Employee:	2
Loan as % of Total Wages*:	2

* Based on extrapolated wages for the most recent 12 months.

** Wages and Covered Employment lag the rest of the Data Summary information by six months

*** Regular programs include State UI, UCFE and UCX.

+ Refers to most recent calendar year. Fourth and first quarter issues publish measure based on extrapolated wages. Second and third quarter issues publish measure based on actual wages.

See glossary for data definitions

Note: Blank cells appearing in any section of this report indicates that information is unavailable.

UI Data Summary for Nevada

CYQ: 2007.4

Benefits	(Quarterly)	Past 12 Months	Rank	High Value : Qtr		Low Value : Qtr	
Benefits Paid (000):	\$95,721	\$324,415	23	\$102,406	2002.1	\$3,807	1971.2
Initial Claims:	47,410	160,918	28	65,819	2001.4	15,524	1989.2
First Payments:	24,978	81,280	26	37,987	2001.4	5,250	1973.2
Weeks Claimed:	378,127	1,300,032	27	511,261	2001.4	81,969	1973.3
Wks Compensated:	339,674	1,166,776	25	449,715	2002.1	70,349	1978.3
Exhaustions:	7,473	26,170	26	12,048	2002.2	1,506	1978.3
Exhaustion Rate:		37.6%	17	50.0%	1976.3	21.3%	1989.3
Average Duration:		14.4	27	16.9	1983.4	11.4	1979.2
AWBA:	\$288.61	\$284.27	24	\$288.61	2007.4	\$46.51	1971.2
As % of AWW:	36.9		29				
Avg. Benefits per First Payment:		\$3,991					

Financial Information	Past 12 Months	Rank
State Revenues (000):	\$372,212	23
Total Wages (000)**:	\$12,779,566	29
Total Wages (Taxable Employers)(000)**:	\$11,045,312	30
Taxable Wages (000)**:	\$7,251,131	17
Avg. Weekly Wage**:	\$781.50	21
Avg. Tax Rate on Taxable Wages (%) **:	1.43	43
Avg. Tax Rate on Total Wages (%) **:	0.82	14
Calendar Yr Taxable Wage Base:	\$24,600	8
Trust Fund (TF) Balance (000):		
(Including Loans):	\$793,215	15
TF as % of Total Wages*:	1.73	17
Interest Earned (000):	\$9,833	15
Avg. High Cost Multiple +:	1.02	18
High Cost Multiple +:	0.63	21

Labor Force	(Quarterly)	Past 12 Mos	Rank
IUR (%):	2.3	2.0	12
TUR (%):	5.2	4.8	9
Total Unemp. (000):	70.6	64.4	33
Insured Unemployed (000) ***			
Regular Programs:	29.1	25.3	28
All Programs:	29.1	25.3	28
Reciency Rates (%) ***			
Regular Programs:	41	39	15
All Programs:	41	39	15
Covered Emp. (000)**:	1,276	1,265	32
Civ. Labor Force (000):	1,356	1,336	35
Subj. Employers (000):	60	59	35

Extended Benefits	(Quarterly)	Past 12 Months
Extended Benefits (000):	\$0	\$0
EB First Payments:	0	0
EB Weeks Claimed:	0	0
EB Exhaustions:	0	0

Loans	Rank	
Outstanding Loan Bal (000):	\$0	2
Loan per Cov Employee:	\$0	2
Loan as % of Total Wages*:	0	2

* Based on extrapolated wages for the most recent 12 months.

** Wages and Covered Employment lag the rest of the Data Summary information by six months

*** Regular programs include State UI, UCFE and UCX.

+ Refers to most recent calendar year. Fourth and first quarter issues publish measure based on extrapolated wages. Second and third quarter issues publish measure based on actual wages.

See glossary for data definitions

Note: Blank cells appearing in any section of this report indicates that information is unavailable.

UI Data Summary for New Hampshire

CYQ: 2007.4

Benefits	(Quarterly)	Past 12 Months	Rank	High Value : Qtr		Low Value : Qtr	
<u>Benefits Paid (000):</u>	\$18,835	\$84,187	48	\$34,830	2003.1	\$1,519	1972.4
<u>Initial Claims:</u>	15,137	51,957	46	37,881	1974.4	5,974	2000.2
<u>First Payments:</u>	5,881	26,058	47	31,034	1975.2	2,086	1999.4
<u>Weeks Claimed:</u>	83,825	378,595	48	266,020	1975.1	24,573	1987.4
<u>Wks Compensated:</u>	69,847	328,678	47	240,574	1975.1	16,768	1987.4
<u>Exhaustions:</u>	1,008	4,336	49	5,519	1991.4	1	1985.3
<u>Exhaustion Rate:</u>		16.6%	52	33.8%	2003.2	1.8%	1988.1
<u>Average Duration:</u>		12.6	46	18.0	2004.1	5.4	1988.1
<u>AWBA:</u>	\$278.39	\$263.65	29	\$278.39	2007.4	\$45.06	1971.2
As % of AWW:	33.5		37				
<u>Avg. Benefits per First Payment:</u>		\$3,231					

Financial Information	Past 12 Months	Rank
<u>State Revenues (000):</u>	\$55,746	49
<u>Total Wages (000)**:</u>	\$6,641,671	39
<u>Total Wages (Taxable Employers)(000)**:</u>	\$5,216,502	39
<u>Taxable Wages (000)**:</u>	\$767,457	46
<u>Avg. Weekly Wage**:</u>	\$832.02	14
<u>Avg. Tax Rate on Taxable Wages (%) **:</u>	1.30	44
<u>Avg. Tax Rate on Total Wages (%) **:</u>	0.27	51
<u>Calendar Yr Taxable Wage Base:</u>	\$8,000	41
<u>Trust Fund (TF) Balance (000):</u>		
(Including Loans):	\$240,422	41
<u>TF as % of Total Wages*:</u>	1.08	27
<u>Interest Earned (000):</u>	\$2,988	41
<u>Avg. High Cost Multiple +:</u>	1.16	12
<u>High Cost Multiple +:</u>	0.43	28

Labor Force	(Quarterly)	Past 12 Mos	Rank
<u>IUR (%):</u>	1.1	1.2	44
<u>TUR (%):</u>	3.1	3.6	43
<u>Total Unemp. (000):</u>	23.2	26.3	42
Insured Unemployed (000) ***			
<u>Regular Programs:</u>	6.6	7.6	47
<u>All Programs:</u>	6.6	7.6	47
Reciency Rates (%) ***			
<u>Regular Programs:</u>	29	29	36
<u>All Programs:</u>	29	29	36
<u>Covered Emp. (000)**:</u>	626	621	41
<u>Civ. Labor Force (000):</u>	737	738	41
<u>Subj. Employers (000):</u>	41	41	41

Extended Benefits	(Quarterly)	Past 12 Months
<u>Extended Benefits (000):</u>	\$0	\$0
EB First Payments:	0	0
EB Weeks Claimed:	0	0
EB Exhaustions:	0	0

Loans	Rank
<u>Outstanding Loan Bal (000):</u>	\$0 2
Loan per Cov Employee:	\$0 2
Loan as % of Total Wages*:	0 2

* Based on extrapolated wages for the most recent 12 months.

** Wages and Covered Employment lag the rest of the Data Summary information by six months

*** Regular programs include State UI, UCFE and UCX.

+ Refers to most recent calendar year. Fourth and first quarter issues publish measure based on extrapolated wages. Second and third quarter issues publish measure based on actual wages.

See glossary for data definitions

Note: Blank cells appearing in any section of this report indicates that information is unavailable.

UI Data Summary for New Jersey

CYQ: 2007.4

Benefits	(Quarterly)	Past 12 Months	Rank	High Value : Qtr		Low Value : Qtr	
<u>Benefits Paid (000):</u>	\$461,607	\$1,960,090	4	\$616,958	2004.1	\$64,334	1972.4
<u>Initial Claims:</u>	158,415	564,020	11	290,136	1975.1	93,677	1987.3
<u>First Payments:</u>	72,975	311,568	8	185,783	1975.1	45,958	1988.2
<u>Weeks Claimed:</u>	1,425,817	6,110,359	7	2,824,241	1975.1	762,372	1987.4
<u>Wks Compensated:</u>	1,302,915	5,652,509	7	2,724,700	1975.1	715,819	1987.4
<u>Exhaustions:</u>	34,118	139,116	4	65,321	1975.2	18,202	1988.4
<u>Exhaustion Rate:</u>		44.7%	4	58.7%	2003.1	33.3%	1988.3
<u>Average Duration:</u>		18.1	3	19.5	1993.1	13.7	1974.1
<u>AWBA:</u>	\$368.18	\$358.90	4	\$368.18	2007.4	\$61.32	1971.1
As % of AWW:	36.3		30				
<u>Avg. Benefits per First Payment:</u>		\$6,291					

Financial Information	Past 12 Months	Rank
<u>State Revenues (000):</u>	\$1,920,320	5
<u>Total Wages (000)**:</u>	\$50,435,644	7
<u>Total Wages (Taxable Employers)(000)**:</u>	\$40,509,019	7
<u>Taxable Wages (000)**:</u>	\$19,944,414	3
<u>Avg. Weekly Wage**:</u>	\$1,013.47	5
<u>Avg. Tax Rate on Taxable Wages (%) **:</u>	2.02	24
<u>Avg. Tax Rate on Total Wages (%) **:</u>	0.89	10
<u>Calendar Yr Taxable Wage Base:</u>	\$27,700	5
<u>Trust Fund (TF) Balance (000):</u>		
(Including Loans):	\$650,449	19
<u>TF as % of Total Wages*:</u>	0.38	46
<u>Interest Earned (000):</u>	\$8,963	18
<u>Avg. High Cost Multiple +:</u>	0.21	49
<u>High Cost Multiple +:</u>	0.11	49

Labor Force	(Quarterly)	Past 12 Mos	Rank
<u>IUR (%):</u>	2.7	2.9	5
<u>TUR (%):</u>	3.9	4.3	32
<u>Total Unemp. (000):</u>	176.2	189.7	11
<u>Insured Unemployed (000) ***</u>			
<u>Regular Programs:</u>	106.4	114.5	7
<u>All Programs:</u>	106.4	114.5	7
<u>Reciency Rates (%) ***</u>			
<u>Regular Programs:</u>	60	60	2
<u>All Programs:</u>	60	60	2
<u>Covered Emp. (000)**:</u>	3,944	3,894	11
<u>Civ. Labor Force (000):</u>	4,462	4,466	11
<u>Subj. Employers (000):</u>	244	251	7

Extended Benefits	(Quarterly)	Past 12 Months
<u>Extended Benefits (000):</u>	\$0	\$0
EB First Payments:	0	0
EB Weeks Claimed:	0	0
EB Exhaustions:	0	0

Loans	Rank
<u>Outstanding Loan Bal (000):</u>	\$0 2
Loan per Cov Employee:	\$0 2
Loan as % of Total Wages*:	0 2

* Based on extrapolated wages for the most recent 12 months.

** Wages and Covered Employment lag the rest of the Data Summary information by six months

*** Regular programs include State UI, UCFE and UCX.

+ Refers to most recent calendar year. Fourth and first quarter issues publish measure based on extrapolated wages. Second and third quarter issues publish measure based on actual wages.

See glossary for data definitions

Note: Blank cells appearing in any section of this report indicates that information is unavailable.

UI Data Summary for New Mexico

CYQ: 2007.4

Benefits	(Quarterly)	Past 12 Months	Rank	<u>High Value : Qtr</u>		<u>Low Value : Qtr</u>	
Benefits Paid (000):	\$32,191	\$125,746	36	\$36,093	2004.1	\$2,686	1972.3
Initial Claims:	15,005	54,492	47	25,921	1983.1	9,060	2006.1
First Payments:	7,689	30,400	43	12,622	1975.1	3,613	1972.2
Weeks Claimed:	141,745	576,635	40	275,784	1983.1	82,983	1972.3
Wks Compensated:	120,197	494,722	40	220,164	1983.1	58,692	1972.3
Exhaustions:	3,056	12,134	39	5,308	1983.1	994	1978.4
Exhaustion Rate:		42.4%	9	46.4%	1983.2	21.8%	1979.4
Average Duration:		16.3	10	19.3	1976.1	14.1	1980.2
AWBA:	\$269.73	\$256.10	32	\$269.73	2007.4	\$44.69	1971.2
As % of AWW:	40.6		15				
Avg. Benefits per First Payment:		\$4,136					

Financial Information	Past 12 Months	Rank
State Revenues (000):	\$110,660	43
Total Wages (000)**:	\$6,884,673	38
Total Wages (Taxable Employers)(000)**:	\$5,305,893	38
Taxable Wages (000)**:	\$2,884,875	36
Avg. Weekly Wage**:	\$663.71	41
Avg. Tax Rate on Taxable Wages (%) **:	0.96	51
Avg. Tax Rate on Total Wages (%) **:	0.49	37
Calendar Yr Taxable Wage Base:	\$19,900	14
Trust Fund (TF) Balance (000):		
(Including Loans):	\$575,524	24
TF as % of Total Wages*:	2.59	9
Interest Earned (000):	\$7,101	25
Avg. High Cost Multiple +:	1.85	2
High Cost Multiple +:	1.58	1

Labor Force	(Quarterly)	Past 12 Mos	Rank
IUR (%):	1.4	1.5	38
TUR (%):	3.1	3.5	44
Total Unemp. (000):	29.4	33.1	39
Insured Unemployed (000) ***			
Regular Programs:	11.5	11.7	39
All Programs:	11.5	11.7	39
Reciency Rates (%) ***			
Regular Programs:	39	35	16
All Programs:	39	35	16
Covered Emp. (000)**:	795	787	38
Civ. Labor Force (000):	948	943	38
Subj. Employers (000):	46	45	39

Extended Benefits	(Quarterly)	Past 12 Months
Extended Benefits (000):	\$0	\$0
EB First Payments:	0	0
EB Weeks Claimed:	0	0
EB Exhaustions:	0	0

Loans	Rank
Outstanding Loan Bal (000):	\$0 2
Loan per Cov Employee:	\$0 2
Loan as % of Total Wages*:	0 2

* Based on extrapolated wages for the most recent 12 months.

** Wages and Covered Employment lag the rest of the Data Summary information by six months

*** Regular programs include State UI, UCFE and UCX.

+ Refers to most recent calendar year. Fourth and first quarter issues publish measure based on extrapolated wages. Second and third quarter issues publish measure based on actual wages.

See glossary for data definitions

Note: Blank cells appearing in any section of this report indicates that information is unavailable.

UI Data Summary for New York

CYQ: 2007.4

Benefits	(Quarterly)	Past 12 Months	Rank	<u>High Value : Qtr</u>		<u>Low Value : Qtr</u>	
Benefits Paid (000):	\$548,748	\$2,219,035	2	\$933,140	2002.1	\$126,179	1973.4
Initial Claims:	268,514	1,002,494	4	674,249	1974.4	188,751	2000.3
First Payments:	112,242	458,096	2	355,805	1975.1	78,936	1985.2
Weeks Claimed:	2,110,914	9,142,946	2	5,968,340	1975.1	1,728,933	1999.4
Wks Compensated:	1,883,643	7,843,797	2	5,422,159	1975.1	1,543,669	2000.2
Exhaustions:	40,575	165,122	2	119,461	1975.3	36,374	1988.1
Exhaustion Rate:		36.8%	19	59.2%	2003.2	29.2%	1974.3
Average Duration:		17.1	7	23.0	1976.1	15.4	2001.2
AWBA:	\$303.95	\$294.54	12	\$303.95	2007.4	\$57.80	1971.3
As % of AWW:	27.2		49				
Avg. Benefits per First Payment:		\$4,844					

Financial Information	Past 12 Months	Rank
State Revenues (000):	\$2,350,352	2
Total Wages (000)**:	\$111,857,107	2
Total Wages (Taxable Employers)(000)**:	\$83,967,952	3
Taxable Wages (000)**:	\$10,932,251	4
Avg. Weekly Wage**:	\$1,117.23	2
Avg. Tax Rate on Taxable Wages (%) **:	3.58	6
Avg. Tax Rate on Total Wages (%) **:	0.58	32
Calendar Yr Taxable Wage Base:	\$8,500	35
Trust Fund (TF) Balance (000):		
(Including Loans):	\$429,723	31
TF as % of Total Wages*:	0.11	52
Interest Earned (000):	\$6,985	26
Avg. High Cost Multiple +:	0.09	52
High Cost Multiple +:	0.04	52

Labor Force	(Quarterly)	Past 12 Mos	Rank
IUR (%):	1.9	2.1	19
TUR (%):	4.5	4.5	19
Total Unemp. (000):	429.7	432.0	3
Insured Unemployed (000) ***			
Regular Programs:	162.9	176.2	2
All Programs:	162.9	176.2	2
Reciency Rates (%) ***			
Regular Programs:	38	41	23
All Programs:	38	41	23
Covered Emp. (000)**:	8,455	8,358	3
Civ. Labor Force (000):	9,529	9,519	3
Subj. Employers (000):	500	496	3

Extended Benefits	(Quarterly)	Past 12 Months
Extended Benefits (000):	\$0	\$0
EB First Payments:	0	0
EB Weeks Claimed:	0	0
EB Exhaustions:	0	0

Loans	Rank	
Outstanding Loan Bal (000):	\$0	2
Loan per Cov Employee:	\$0	2
Loan as % of Total Wages*:	0	2

* Based on extrapolated wages for the most recent 12 months.

** Wages and Covered Employment lag the rest of the Data Summary information by six months

*** Regular programs include State UI, UCFE and UCX.

+ Refers to most recent calendar year. Fourth and first quarter issues publish measure based on extrapolated wages. Second and third quarter issues publish measure based on actual wages.

See glossary for data definitions

Note: Blank cells appearing in any section of this report indicates that information is unavailable.

UI Data Summary for North Carolina

CYQ: 2007.4

Benefits	(Quarterly)	Past 12 Months	Rank	High Value : Qtr		Low Value : Qtr	
<u>Benefits Paid (000):</u>	\$233,452	\$903,617	11	\$347,056	2002.1	\$5,433	1973.4
<u>Initial Claims:</u>	170,935	628,802	8	603,068	1982.1	39,534	1972.4
<u>First Payments:</u>	61,712	242,923	11	247,972	1975.1	13,856	1972.4
<u>Weeks Claimed:</u>	1,024,717	4,025,887	10	2,374,887	1975.1	177,061	1973.4
<u>Wks Compensated:</u>	853,828	3,373,676	11	1,945,163	1975.1	131,814	1973.4
<u>Exhaustions:</u>	25,369	100,241	9	39,392	1975.2	1,894	1973.4
<u>Exhaustion Rate:</u>		41.3%	10	41.3%	2007.4	12.5%	1989.1
<u>Average Duration:</u>		13.9	33	14.2	2004.2	7.5	1988.4
<u>AWBA:</u>	\$282.24	\$276.35	28	\$282.24	2007.4	\$38.77	1972.2
As % of AWW:	38.7		26				
<u>Avg. Benefits per First Payment:</u>		\$3,720					

Financial Information	Past 12 Months	Rank
<u>State Revenues (000):</u>	\$927,798	11
<u>Total Wages (000)**:</u>	\$37,091,589	13
<u>Total Wages (Taxable Employers)(000)**:</u>	\$30,032,891	13
<u>Taxable Wages (000)**:</u>	\$14,820,617	8
<u>Avg. Weekly Wage**:</u>	\$729.68	26
<u>Avg. Tax Rate on Taxable Wages (%) **:</u>	1.90	26
<u>Avg. Tax Rate on Total Wages (%) **:</u>	0.83	13
<u>Calendar Yr Taxable Wage Base:</u>	\$18,600	15
<u>Trust Fund (TF) Balance (000):</u>		
(Including Loans):	\$394,426	34
<u>TF as % of Total Wages*:</u>	0.31	48
<u>Interest Earned (000):</u>	\$5,364	32
<u>Avg. High Cost Multiple +:</u>	0.23	47
<u>High Cost Multiple +:</u>	0.13	48

Labor Force	(Quarterly)	Past 12 Mos	Rank
<u>IUR (%):</u>	2.0	2.0	18
<u>TUR (%):</u>	4.6	4.7	18
<u>Total Unemp. (000):</u>	207.4	210.6	10
Insured Unemployed (000) ***			
<u>Regular Programs:</u>	81.0	78.9	10
<u>All Programs:</u>	81.0	78.9	10
Reciency Rates (%) ***			
<u>Regular Programs:</u>	39	37	17
<u>All Programs:</u>	39	37	17
<u>Covered Emp. (000)**:</u>	4,012	3,960	9
<u>Civ. Labor Force (000):</u>	4,526	4,519	10
<u>Subj. Employers (000):</u>	200	198	12

Extended Benefits	(Quarterly)	Past 12 Months
<u>Extended Benefits (000):</u>	\$0	\$0
EB First Payments:	0	0
EB Weeks Claimed:	0	0
EB Exhaustions:	0	0

Loans	Rank
<u>Outstanding Loan Bal (000):</u>	\$0 2
Loan per Cov Employee:	\$0 2
Loan as % of Total Wages*:	0 2

* Based on extrapolated wages for the most recent 12 months.

** Wages and Covered Employment lag the rest of the Data Summary information by six months

*** Regular programs include State UI, UCFE and UCX.

+ Refers to most recent calendar year. Fourth and first quarter issues publish measure based on extrapolated wages. Second and third quarter issues publish measure based on actual wages.

See glossary for data definitions

Note: Blank cells appearing in any section of this report indicates that information is unavailable.

UI Data Summary for North Dakota

CYQ: 2007.4

Benefits	(Quarterly)	Past 12 Months	Rank	High Value : Qtr		Low Value : Qtr	
<u>Benefits Paid (000):</u>	\$7,550	\$40,968	51	\$23,730	1983.1	\$620	1971.3
<u>Initial Claims:</u>	8,625	24,418	49	19,325	1982.4	2,017	1971.3
<u>First Payments:</u>	3,585	12,947	50	11,508	1983.1	929	1971.3
<u>Weeks Claimed:</u>	35,154	178,604	50	179,165	1983.1	19,179	1971.3
<u>Wks Compensated:</u>	28,052	154,098	50	171,825	1983.1	14,351	1971.3
<u>Exhaustions:</u>	792	4,318	50	4,709	1983.2	382	1971.4
<u>Exhaustion Rate:</u>		30.8%	34	47.0%	1983.2	23.0%	1979.1
<u>Average Duration:</u>		11.9	50	15.9	1987.1	9.8	1997.2
<u>AWBA:</u>	\$271.13	\$267.71	31	\$274.53	2007.1	\$43.75	1971.3
As % of AWW:	44.8		4				
<u>Avg. Benefits per First Payment:</u>		\$3,164					

Financial Information	Past 12 Months	Rank
<u>State Revenues (000):</u>	\$53,849	51
<u>Total Wages (000)**:</u>	\$2,637,508	51
<u>Total Wages (Taxable Employers)(000)**:</u>	\$1,919,896	51
<u>Taxable Wages (000)**:</u>	\$1,282,266	48
<u>Avg. Weekly Wage**:</u>	\$605.80	49
<u>Avg. Tax Rate on Taxable Wages (%) **:</u>	1.19	48
<u>Avg. Tax Rate on Total Wages (%) **:</u>	0.66	28
<u>Calendar Yr Taxable Wage Base:</u>	\$22,100	11
<u>Trust Fund (TF) Balance (000):</u>		
(Including Loans):	\$134,442	49
<u>TF as % of Total Wages*:</u>	1.68	18
<u>Interest Earned (000):</u>	\$1,623	49
<u>Avg. High Cost Multiple +:</u>	0.80	25
<u>High Cost Multiple +:</u>	0.72	17

Labor Force	(Quarterly)	Past 12 Mos	Rank
<u>IUR (%):</u>	0.8	1.1	51
<u>TUR (%):</u>	2.7	3.2	50
<u>Total Unemp. (000):</u>	9.9	11.6	51
<u>Insured Unemployed (000) ***</u>			
<u>Regular Programs:</u>	2.7	3.6	50
<u>All Programs:</u>	2.7	3.6	50
<u>Reciency Rates (%) ***</u>			
<u>Regular Programs:</u>	28	31	39
<u>All Programs:</u>	28	31	39
<u>Covered Emp. (000)**:</u>	334	329	49
<u>Civ. Labor Force (000):</u>	363	366	48
<u>Subj. Employers (000):</u>	20	20	51

Extended Benefits	(Quarterly)	Past 12 Months
<u>Extended Benefits (000):</u>	\$0	\$0
EB First Payments:	0	0
EB Weeks Claimed:	0	0
EB Exhaustions:	0	0

Loans	Rank
<u>Outstanding Loan Bal (000):</u>	\$0 2
Loan per Cov Employee:	\$0 2
Loan as % of Total Wages*:	0 2

* Based on extrapolated wages for the most recent 12 months.

** Wages and Covered Employment lag the rest of the Data Summary information by six months

*** Regular programs include State UI, UCFE and UCX.

+ Refers to most recent calendar year. Fourth and first quarter issues publish measure based on extrapolated wages. Second and third quarter issues publish measure based on actual wages.

See glossary for data definitions

Note: Blank cells appearing in any section of this report indicates that information is unavailable.

UI Data Summary for Ohio

CYQ: 2007.4

Benefits	(Quarterly)	Past 12 Months	Rank	High Value : Qtr		Low Value : Qtr	
				Value	Year	Value	Year
Benefits Paid (000):	\$279,883	\$1,206,524	10	\$479,209	2002.1	\$19,670	1973.3
Initial Claims:	202,176	638,430	6	491,161	1982.4	77,739	1973.2
First Payments:	69,533	278,006	9	262,818	1975.1	29,637	1973.2
Weeks Claimed:	1,208,657	5,098,952	9	3,509,353	1982.1	469,902	1973.3
Wks Compensated:	965,378	4,224,808	9	3,169,009	1982.1	351,318	1973.4
Exhaustions:	18,554	78,525	12	72,068	1982.3	6,345	1973.4
Exhaustion Rate:		28.4%	42	44.9%	1983.1	16.5%	2000.4
Average Duration:		15.2	15	18.7	1983.4	10.2	1974.1
AWBA:	\$294.72	\$289.95	18	\$294.72	2007.4	\$49.28	1971.2
As % of AWW:	39.3		21				
Avg. Benefits per First Payment:		\$4,340					

Financial Information	Past 12 Months	Rank
State Revenues (000):	\$1,096,249	9
Total Wages (000)**:	\$50,155,968	8
Total Wages (Taxable Employers)(000)**:	\$39,665,250	8
Taxable Wages (000)**:	\$8,197,742	10
Avg. Weekly Wage**:	\$750.47	23
Avg. Tax Rate on Taxable Wages (%) **:	2.53	16
Avg. Tax Rate on Total Wages (%) **:	0.65	29
Calendar Yr Taxable Wage Base:	\$9,000	31
Trust Fund (TF) Balance (000):		
(Including Loans):	\$444,530	30
TF as % of Total Wages*:	0.27	50
Interest Earned (000):	\$6,621	29
Avg. High Cost Multiple +:	0.12	51
High Cost Multiple +:	0.09	50

Labor Force	(Quarterly)	Past 12 Mos	Rank
IUR (%):	1.8	1.9	25
TUR (%):	5.5	5.6	8
Total Unemp. (000):	327.9	336.4	7
Insured Unemployed (000) ***			
Regular Programs:	94.6	99.8	8
All Programs:	94.6	99.8	8
Reciency Rates (%) ***			
Regular Programs:	29	30	35
All Programs:	29	30	35
Covered Emp. (000)**:	5,268	5,232	7
Civ. Labor Force (000):	5,989	5,977	7
Subj. Employers (000):	227	228	8

Extended Benefits	(Quarterly)	Past 12 Months
Extended Benefits (000):	\$0	\$0
EB First Payments:	0	0
EB Weeks Claimed:	0	0
EB Exhaustions:	0	0

Loans	Rank
Outstanding Loan Bal (000):	2
Loan per Cov Employee:	2
Loan as % of Total Wages*:	2

* Based on extrapolated wages for the most recent 12 months.

** Wages and Covered Employment lag the rest of the Data Summary information by six months

*** Regular programs include State UI, UCFE and UCX.

+ Refers to most recent calendar year. Fourth and first quarter issues publish measure based on extrapolated wages. Second and third quarter issues publish measure based on actual wages.

See glossary for data definitions

Note: Blank cells appearing in any section of this report indicates that information is unavailable.

UI Data Summary for **Oklahoma**

CYQ: **2007.4**

Benefits	(Quarterly)	Past 12 Months	Rank	High Value : Qtr		Low Value : Qtr	
Benefits Paid (000):	\$36,589	\$153,706	35	\$77,707	1983.1	\$5,871	1972.3
Initial Claims:	27,965	109,686	36	72,345	1982.3	19,985	2000.2
First Payments:	9,626	41,715	38	40,001	1982.4	7,273	1978.3
Weeks Claimed:	173,937	736,745	35	623,327	1983.1	130,917	1978.3
Wks Compensated:	148,149	627,935	35	552,703	1983.1	86,510	1978.3
Exhaustions:	3,680	15,816	36	22,782	1983.1	2,430	1998.4
Exhaustion Rate:		36.9%	18	59.8%	1983.2	24.7%	2000.4
Average Duration:		15.1	17	17.4	2004.2	10.3	1982.2
AWBA:	\$252.11	\$250.59	39	\$252.11	2007.4	\$14.70	1971.1
As % of AWW:	38.9		25				
Avg. Benefits per First Payment:		\$3,685					

Financial Information	Past 12 Months	Rank
State Revenues (000):	\$209,200	32
Total Wages (000)**:	\$12,595,041	31
Total Wages (Taxable Employers)(000)**:	\$10,418,395	31
Taxable Wages (000)**:	\$4,279,502	28
Avg. Weekly Wage**:	\$648.99	45
Avg. Tax Rate on Taxable Wages (%) **:	1.20	46
Avg. Tax Rate on Total Wages (%) **:	0.49	38
Calendar Yr Taxable Wage Base:	\$13,600	19
Trust Fund (TF) Balance (000):		
(Including Loans):	\$831,388	14
TF as % of Total Wages*:	1.94	15
Interest Earned (000):	\$10,137	14
Avg. High Cost Multiple +:	1.54	6
High Cost Multiple +:	1.42	3

Labor Force	(Quarterly)	Past 12 Mos	Rank
IUR (%):	0.9	1.0	49
TUR (%):	4.2	4.3	28
Total Unemp. (000):	72.6	74.7	30
Insured Unemployed (000) ***			
Regular Programs:	13.8	14.7	36
All Programs:	13.8	14.7	36
Reciency Rates (%) ***			
Regular Programs:	19	20	51
All Programs:	19	20	51
Covered Emp. (000)**:	1,492	1,475	29
Civ. Labor Force (000):	1,739	1,733	29
Subj. Employers (000):	81	81	29

Extended Benefits	(Quarterly)	Past 12 Months
Extended Benefits (000):	\$0	\$0
EB First Payments:	0	0
EB Weeks Claimed:	0	0
EB Exhaustions:	0	0

Loans	Rank
Outstanding Loan Bal (000):	\$0 2
Loan per Cov Employee:	\$0 2
Loan as % of Total Wages*:	0 2

* Based on extrapolated wages for the most recent 12 months.

** Wages and Covered Employment lag the rest of the Data Summary information by six months

*** Regular programs include State UI, UCFE and UCX.

+ Refers to most recent calendar year. Fourth and first quarter issues publish measure based on extrapolated wages. Second and third quarter issues publish measure based on actual wages.

See glossary for data definitions

Note: Blank cells appearing in any section of this report indicates that information is unavailable.

UI Data Summary for Oregon

CYQ: 2007.4

Benefits	(Quarterly)	Past 12 Months	Rank	High Value : Qtr		Low Value : Qtr	
Benefits Paid (000):	\$148,192	\$541,781	17	\$234,369	2002.1	\$7,771	1972.3
Initial Claims:	113,644	347,074	16	153,754	2001.4	39,945	1972.3
First Payments:	42,199	138,246	16	61,610	2003.1	11,218	1972.3
Weeks Claimed:	604,664	2,254,366	17	1,050,912	1982.1	236,902	1972.3
Wks Compensated:	510,795	1,934,926	16	978,274	2003.1	171,876	1972.3
Exhaustions:	10,063	39,580	20	23,099	2002.2	2,889	1973.4
Exhaustion Rate:		30.6%	36	46.9%	2003.2	18.4%	1979.4
Average Duration:		14.0	31	18.0	2002.4	12.0	1980.2
AWBA:	\$296.36	\$285.62	16	\$296.36	2007.4	\$42.83	1971.2
As % of AWW:	40.2		17				
Avg. Benefits per First Payment:		\$3,919					

Financial Information	Past 12 Months	Rank
State Revenues (000):	\$642,785	15
Total Wages (000)**:	\$16,302,983	26
Total Wages (Taxable Employers)(000)**:	\$12,671,960	27
Taxable Wages (000)**:	\$8,832,334	15
Avg. Weekly Wage**:	\$737.57	25
Avg. Tax Rate on Taxable Wages (%) **:	2.05	22
Avg. Tax Rate on Total Wages (%) **:	1.24	3
Calendar Yr Taxable Wage Base:	\$30,200	4
Trust Fund (TF) Balance (000):		
(Including Loans):	\$1,933,225	4
TF as % of Total Wages*:	3.67	2
Interest Earned (000):	\$23,594	5
Avg. High Cost Multiple +:	1.46	7
High Cost Multiple +:	1.14	6

Labor Force	(Quarterly)	Past 12 Mos	Rank
IUR (%):	2.8	2.6	6
TUR (%):	5.1	5.2	11
Total Unemp. (000):	98.9	100.5	26
Insured Unemployed (000) ***			
Regular Programs:	47.8	44.6	17
All Programs:	47.8	44.6	17
Reciency Rates (%) ***			
Regular Programs:	48	44	9
All Programs:	48	44	9
Covered Emp. (000)**:	1,707	1,688	27
Civ. Labor Force (000):	1,940	1,928	27
Subj. Employers (000):	113	113	23

Extended Benefits	(Quarterly)	Past 12 Months
Extended Benefits (000):	\$0	\$0
EB First Payments:	0	0
EB Weeks Claimed:	0	0
EB Exhaustions:	0	0

Loans	Rank
Outstanding Loan Bal (000):	\$0 2
Loan per Cov Employee:	\$0 2
Loan as % of Total Wages*:	0 2

* Based on extrapolated wages for the most recent 12 months.

** Wages and Covered Employment lag the rest of the Data Summary information by six months

*** Regular programs include State UI, UCFE and UCX.

+ Refers to most recent calendar year. Fourth and first quarter issues publish measure based on extrapolated wages. Second and third quarter issues publish measure based on actual wages.

See glossary for data definitions

Note: Blank cells appearing in any section of this report indicates that information is unavailable.

UI Data Summary for **Pennsylvania**

CYQ: 2007.4

Benefits	(Quarterly)	Past 12 Months	Rank	High Value : Qtr		Low Value : Qtr	
Benefits Paid (000):	\$513,169	\$2,258,333	3	\$844,154	2003.1	\$65,467	1971.3
Initial Claims:	365,371	1,238,753	2	595,313	1982.4	188,957	2000.3
First Payments:	107,754	461,807	3	294,655	1975.1	70,828	1973.2
Weeks Claimed:	2,036,128	8,676,445	3	4,645,096	1983.1	1,301,090	1988.4
Wks Compensated:	1,656,938	7,458,854	3	4,309,149	1983.1	1,122,944	1988.4
Exhaustions:	32,617	131,934	6	77,689	1983.1	15,144	1973.4
Exhaustion Rate:		28.9%	40	38.3%	1994.1	16.7%	1980.1
Average Duration:		16.2	11	20.9	1983.3	13.5	1979.3
AWBA:	\$330.62	\$322.93	9	\$330.62	2007.4	\$50.64	1971.3
As % of AWW:	41.0		13				
Avg. Benefits per First Payment:		\$4,890					

Financial Information	Past 12 Months	Rank
State Revenues (000):	\$2,348,448	3
Total Wages (000)**:	\$57,680,058	6
Total Wages (Taxable Employers)(000)**:	\$44,520,185	6
Taxable Wages (000)**:	\$7,008,694	12
Avg. Weekly Wage**:	\$807.45	17
Avg. Tax Rate on Taxable Wages (%) **:	5.07	1
Avg. Tax Rate on Total Wages (%) **:	1.10	5
Calendar Yr Taxable Wage Base:	\$8,000	41
Trust Fund (TF) Balance (000):		
(Including Loans):	\$1,545,652	7
TF as % of Total Wages*:	0.83	32
Interest Earned (000):	\$20,518	7
Avg. High Cost Multiple +:	0.30	42
High Cost Multiple +:	0.25	39

Labor Force	(Quarterly)	Past 12 Mos	Rank
IUR (%):	2.8	3.0	4
TUR (%):	4.2	4.4	29
Total Unemp. (000):	262.4	273.7	8
Insured Unemployed (000) ***			
Regular Programs:	156.8	166.6	3
All Programs:	156.8	166.6	3
Reciency Rates (%) ***			
Regular Programs:	60	61	3
All Programs:	60	61	3
Covered Emp. (000)**:	5,587	5,527	6
Civ. Labor Force (000):	6,302	6,287	6
Subj. Employers (000):	289	288	6

Extended Benefits	(Quarterly)	Past 12 Months
Extended Benefits (000):	\$0	\$0
EB First Payments:	0	0
EB Weeks Claimed:	0	0
EB Exhaustions:	0	0

Loans	Rank
Outstanding Loan Bal (000):	\$0 2
Loan per Cov Employee:	\$0 2
Loan as % of Total Wages*:	0 2

* Based on extrapolated wages for the most recent 12 months.

** Wages and Covered Employment lag the rest of the Data Summary information by six months

*** Regular programs include State UI, UCFE and UCX.

+ Refers to most recent calendar year. Fourth and first quarter issues publish measure based on extrapolated wages. Second and third quarter issues publish measure based on actual wages.

See glossary for data definitions

Note: Blank cells appearing in any section of this report indicates that information is unavailable.

UI Data Summary for Puerto Rico

CYQ: 2007.4

Benefits	(Quarterly)	Past 12 Months	Rank	High Value : Qtr		Low Value : Qtr	
Benefits Paid (000):	\$50,521	\$202,726	33	\$67,074	2001.3	\$9,234	1971.2
Initial Claims:	33,814	162,303	34	132,965	2006.2	33,814	2007.4
First Payments:	21,549	99,067	30	46,272	1998.4	6,319	1984.1
Weeks Claimed:	502,197	2,067,827	20	922,160	1975.2	341,054	1988.2
Wks Compensated:	464,595	1,875,611	18	671,786	1994.2	198,213	1983.2
Exhaustions:	11,440	46,820	16	26,319	1976.3	3,103	1983.2
Exhaustion Rate:		47.3%	2	98.6%	1984.3	30.3%	1982.2
Average Duration:		18.9	2	39.4	1984.3	13.8	1989.4
AWBA:	\$111.81	\$111.29	53	\$111.88	2007.2	\$29.70	1971.1
As % of AWW:	24.4		52				
Avg. Benefits per First Payment:		\$2,046					

Financial Information	Past 12 Months	Rank
State Revenues (000):	\$186,276	35
Total Wages (000)**:	\$5,861,870	40
Total Wages (Taxable Employers)(000)**:	\$3,936,282	43
Taxable Wages (000)**:	\$1,328,785	44
Avg. Weekly Wage**:	\$458.45	53
Avg. Tax Rate on Taxable Wages (%) **:	3.20	8
Avg. Tax Rate on Total Wages (%) **:	1.08	8
Calendar Yr Taxable Wage Base:	\$7,000	49
Trust Fund (TF) Balance (000):		
(Including Loans):	\$529,260	28
TF as % of Total Wages*:	3.22	4
Interest Earned (000):	\$6,519	30
Avg. High Cost Multiple +:	1.00	19
High Cost Multiple +:	0.73	15

Labor Force	(Quarterly)	Past 12 Mos	Rank
IUR (%):	3.9	4.0	2
TUR (%):	11.1	10.9	1
Total Unemp. (000):	151.6	152.4	14
Insured Unemployed (000) ***			
Regular Programs:	39.7	41.1	20
All Programs:	39.7	41.1	20
Reciency Rates (%) ***			
Regular Programs:	26	27	42
All Programs:	26	27	42
Covered Emp. (000)**:	1,004	1,012	36
Civ. Labor Force (000):	1,364	1,394	34
Subj. Employers (000):	69	68	33

Extended Benefits	(Quarterly)	Past 12 Months
Extended Benefits (000):	\$0	\$0
EB First Payments:	0	0
EB Weeks Claimed:	0	0
EB Exhaustions:	0	0

Loans	Rank
Outstanding Loan Bal (000):	\$0 2
Loan per Cov Employee:	\$0 2
Loan as % of Total Wages*:	0 2

* Based on extrapolated wages for the most recent 12 months.

** Wages and Covered Employment lag the rest of the Data Summary information by six months

*** Regular programs include State UI, UCFE and UCX.

+ Refers to most recent calendar year. Fourth and first quarter issues publish measure based on extrapolated wages. Second and third quarter issues publish measure based on actual wages.

See glossary for data definitions

Note: Blank cells appearing in any section of this report indicates that information is unavailable.

UI Data Summary for Rhode Island

CYQ: 2007.4

Benefits	(Quarterly)	Past 12 Months	Rank	High Value : Qtr		Low Value : Qtr	
<u>Benefits Paid (000):</u>	\$53,687	\$224,281	32	\$68,991	2007.1	\$6,858	1972.4
<u>Initial Claims:</u>	22,376	82,016	38	102,513	1978.2	14,082	1989.1
<u>First Payments:</u>	9,372	41,215	39	51,557	1978.2	6,427	1988.2
<u>Weeks Claimed:</u>	168,067	719,084	37	508,725	1975.1	104,435	1987.4
<u>Wks Compensated:</u>	147,623	641,081	36	444,513	1975.1	85,635	1987.4
<u>Exhaustions:</u>	3,934	15,181	35	12,648	1975.2	1,870	1987.4
<u>Exhaustion Rate:</u>		39.1%	14	51.5%	1994.1	18.6%	1979.1
<u>Average Duration:</u>		15.6	13	19.5	1976.1	9.2	1979.1
<u>AWBA:</u>	\$374.08	\$358.99	3	\$374.08	2007.4	\$54.10	1971.3
As % of AWW:	47.7		3				
<u>Avg. Benefits per First Payment:</u>		\$5,442					

Financial Information	Past 12 Months	Rank
<u>State Revenues (000):</u>	\$189,176	34
<u>Total Wages (000)**:</u>	\$4,712,603	46
<u>Total Wages (Taxable Employers)(000)**:</u>	\$3,435,798	46
<u>Taxable Wages (000)**:</u>	\$1,315,400	43
<u>Avg. Weekly Wage**:</u>	\$784.61	20
<u>Avg. Tax Rate on Taxable Wages (%) **:</u>	3.35	7
<u>Avg. Tax Rate on Total Wages (%) **:</u>	1.28	2
<u>Calendar Yr Taxable Wage Base:</u>	\$14,000	18
<u>Trust Fund (TF) Balance (000):</u>		
(Including Loans):	\$159,901	47
<u>TF as % of Total Wages*:</u>	1.08	28
<u>Interest Earned (000):</u>	\$2,133	47
<u>Avg. High Cost Multiple +:</u>	0.37	38
<u>High Cost Multiple +:</u>	0.25	39

Labor Force	(Quarterly)	Past 12 Mos	Rank
<u>IUR (%):</u>	2.7	2.9	7
<u>TUR (%):</u>	4.8	5.0	16
<u>Total Unemp. (000):</u>	27.8	29.1	40
<u>Insured Unemployed (000) ***</u>			
<u>Regular Programs:</u>	12.7	13.6	37
<u>All Programs:</u>	12.7	13.6	37
<u>Reciency Rates (%) ***</u>			
<u>Regular Programs:</u>	46	47	11
<u>All Programs:</u>	46	47	11
<u>Covered Emp. (000)**:</u>	476	472	45
<u>Civ. Labor Force (000):</u>	578	577	44
<u>Subj. Employers (000):</u>	34	34	44

Extended Benefits	(Quarterly)	Past 12 Months
<u>Extended Benefits (000):</u>	\$0	\$0
EB First Payments:	0	0
EB Weeks Claimed:	0	0
EB Exhaustions:	0	0

Loans	Rank
<u>Outstanding Loan Bal (000):</u>	\$0 2
Loan per Cov Employee:	\$0 2
Loan as % of Total Wages*:	0 2

* Based on extrapolated wages for the most recent 12 months.

** Wages and Covered Employment lag the rest of the Data Summary information by six months

*** Regular programs include State UI, UCFE and UCX.

+ Refers to most recent calendar year. Fourth and first quarter issues publish measure based on extrapolated wages. Second and third quarter issues publish measure based on actual wages.

See glossary for data definitions

Note: Blank cells appearing in any section of this report indicates that information is unavailable.

UI Data Summary for South Carolina

CYQ: 2007.4

Benefits	(Quarterly)	Past 12 Months	Rank	High Value : Qtr		Low Value : Qtr	
<u>Benefits Paid (000):</u>	\$96,620	\$351,541	22	\$123,120	2002.1	\$4,284	1973.3
<u>Initial Claims:</u>	79,728	288,934	20	259,218	1982.1	17,287	1973.2
<u>First Payments:</u>	31,228	114,095	20	132,837	1975.1	6,914	1972.4
<u>Weeks Claimed:</u>	513,594	1,941,855	19	1,140,593	1975.1	119,478	1973.2
<u>Wks Compensated:</u>	422,908	1,578,571	22	942,398	1975.1	93,407	1973.3
<u>Exhaustions:</u>	11,235	43,311	17	19,459	1975.2	2,196	1973.4
<u>Exhaustion Rate:</u>		38.2%	16	49.1%	1975.2	17.7%	1990.2
<u>Average Duration:</u>		13.8	34	14.7	1976.1	7.9	1975.1
<u>AWBA:</u>	\$235.79	\$229.69	42	\$235.79	2007.4	\$41.67	1971.1
As % of AWW:	35.7		33				
<u>Avg. Benefits per First Payment:</u>		\$3,081					

Financial Information	Past 12 Months	Rank
<u>State Revenues (000):</u>	\$289,507	28
<u>Total Wages (000)**:</u>	\$16,058,277	27
<u>Total Wages (Taxable Employers)(000)**:</u>	\$12,923,288	26
<u>Taxable Wages (000)**:</u>	\$2,320,946	33
<u>Avg. Weekly Wage**:</u>	\$661.20	42
<u>Avg. Tax Rate on Taxable Wages (%) **:</u>	2.16	20
<u>Avg. Tax Rate on Total Wages (%) **:</u>	0.54	34
<u>Calendar Yr Taxable Wage Base:</u>	\$7,000	49
<u>Trust Fund (TF) Balance (000):</u>		
(Including Loans):	\$199,183	43
<u>TF as % of Total Wages*:</u>	0.38	45
<u>Interest Earned (000):</u>	\$2,769	43
<u>Avg. High Cost Multiple +:</u>	0.26	46
<u>High Cost Multiple +:</u>	0.13	48

Labor Force	(Quarterly)	Past 12 Mos	Rank
<u>IUR (%):</u>	2.2	2.1	15
<u>TUR (%):</u>	6.1	5.9	4
<u>Total Unemp. (000):</u>	129.2	125.3	19
Insured Unemployed (000) ***			
<u>Regular Programs:</u>	41.1	39.2	19
<u>All Programs:</u>	41.1	39.2	19
Reciency Rates (%) ***			
<u>Regular Programs:</u>	32	31	31
<u>All Programs:</u>	32	31	31
<u>Covered Emp. (000)**:</u>	1,877	1,849	24
<u>Civ. Labor Force (000):</u>	2,136	2,137	24
<u>Subj. Employers (000):</u>	99	100	26

Extended Benefits	(Quarterly)	Past 12 Months
<u>Extended Benefits (000):</u>	\$0	\$0
EB First Payments:	0	0
EB Weeks Claimed:	0	0
EB Exhaustions:	0	0

Loans	Rank
<u>Outstanding Loan Bal (000):</u>	\$0 2
Loan per Cov Employee:	\$0 2
Loan as % of Total Wages*:	0 2

* Based on extrapolated wages for the most recent 12 months.

** Wages and Covered Employment lag the rest of the Data Summary information by six months

*** Regular programs include State UI, UCFE and UCX.

+ Refers to most recent calendar year. Fourth and first quarter issues publish measure based on extrapolated wages. Second and third quarter issues publish measure based on actual wages.

See glossary for data definitions

Note: Blank cells appearing in any section of this report indicates that information is unavailable.

UI Data Summary for South Dakota

CYQ: 2007.4

Benefits

	(Quarterly)	Past 12 Months	Rank	High Value : Qtr		Low Value : Qtr	
Benefits Paid (000):	\$3,532	\$19,276	52	\$10,598	2003.1	\$448	1971.3
Initial Claims:	5,776	17,766	52	13,637	1978.4	2,200	1971.2
First Payments:	1,834	7,689	52	6,177	1979.1	1,008	2007.3
Weeks Claimed:	21,085	105,768	52	88,801	1979.1	16,839	1971.3
Wks Compensated:	15,848	86,483	52	66,277	1979.1	12,003	1971.3
Exhaustions:	193	847	53	1,370	1975.2	105	2000.3
Exhaustion Rate:		10.6%	53	33.5%	1975.2	7.3%	2000.4
Average Duration:		11.3	52	14.6	1983.3	9.8	2001.1
AWBA:	\$227.91	\$227.25	46	\$233.03	2007.1	\$39.50	1971.3
As % of AWW:	39.1		24				
Avg. Benefits per First Payment:		\$2,507					

Financial Information

	Past 12 Months	Rank
State Revenues (000):	\$26,418	52
Total Wages (000)**:	\$2,887,031	49
Total Wages (Taxable Employers)(000)**:	\$2,236,921	49
Taxable Wages (000)**:	\$581,950	51
Avg. Weekly Wage**:	\$582.22	52
Avg. Tax Rate on Taxable Wages (%) **:	0.89	52
Avg. Tax Rate on Total Wages (%) **:	0.27	52
Calendar Yr Taxable Wage Base:	\$9,000	31
Trust Fund (TF) Balance (000):		
(Including Loans):	\$24,680	52
TF as % of Total Wages*:	0.27	49
Interest Earned (000):	\$308	52
Avg. High Cost Multiple +:	0.33	40
High Cost Multiple +:	0.25	39

Labor Force

	(Quarterly)	Past 12 Mos	Rank
IUR (%):	0.5	0.6	53
TUR (%):	2.7	3.0	49
Total Unemp. (000):	12.0	13.1	50
Insured Unemployed (000) ***			
Regular Programs:	1.8	2.3	52
All Programs:	1.8	2.3	52
Reciency Rates (%) ***			
Regular Programs:	15	17	52
All Programs:	15	17	52
Covered Emp. (000)**:	385	377	48
Civ. Labor Force (000):	442	443	47
Subj. Employers (000):	25	25	48

Extended Benefits

	(Quarterly)	Past 12 Months
Extended Benefits (000):	\$0	\$0
EB First Payments:	0	0
EB Weeks Claimed:	0	0
EB Exhaustions:	0	0

Loans

	Rank
Outstanding Loan Bal (000):	2
Loan per Cov Employee:	2
Loan as % of Total Wages*:	2

* Based on extrapolated wages for the most recent 12 months.

** Wages and Covered Employment lag the rest of the Data Summary information by six months

*** Regular programs include State UI, UCFE and UCX.

+ Refers to most recent calendar year. Fourth and first quarter issues publish measure based on extrapolated wages. Second and third quarter issues publish measure based on actual wages.

See glossary for data definitions

Note: Blank cells appearing in any section of this report indicates that information is unavailable.

UI Data Summary for Tennessee

CYQ: 2007.4

Benefits	(Quarterly)	Past 12 Months	Rank	High Value : Qtr		Low Value : Qtr	
<u>Benefits Paid (000):</u>	\$99,139	\$430,458	21	\$193,223	2002.1	\$7,536	1972.4
<u>Initial Claims:</u>	76,300	311,595	21	279,757	1982.1	27,840	1973.2
<u>First Payments:</u>	32,430	143,130	18	121,148	1975.1	14,013	1972.4
<u>Weeks Claimed:</u>	469,284	2,091,459	21	1,526,707	1975.1	231,044	1972.4
<u>Wks Compensated:</u>	453,664	1,994,130	19	1,189,643	1975.1	170,977	1972.4
<u>Exhaustions:</u>	14,116	50,775	15	29,480	1975.2	4,037	1973.4
<u>Exhaustion Rate:</u>		35.1%	24	40.2%	2003.4	19.6%	1984.3
<u>Average Duration:</u>		13.9	32	16.6	1976.1	8.8	1990.4
<u>AWBA:</u>	\$224.57	\$221.69	47	\$224.57	2007.4	\$41.43	1971.1
As % of AWW:	30.8		43				
<u>Avg. Benefits per First Payment:</u>		\$3,007					

Financial Information	Past 12 Months	Rank
<u>State Revenues (000):</u>	\$360,274	25
<u>Total Wages (000)**:</u>	\$25,322,688	20
<u>Total Wages (Taxable Employers)(000)**:</u>	\$20,939,066	19
<u>Taxable Wages (000)**:</u>	\$3,240,182	27
<u>Avg. Weekly Wage**:</u>	\$728.63	27
<u>Avg. Tax Rate on Taxable Wages (%) **:</u>	1.82	30
<u>Avg. Tax Rate on Total Wages (%) **:</u>	0.40	42
<u>Calendar Yr Taxable Wage Base:</u>	\$7,000	49
<u>Trust Fund (TF) Balance (000):</u>		
(Including Loans):	\$566,161	25
<u>TF as % of Total Wages*:</u>	0.65	38
<u>Interest Earned (000):</u>	\$7,195	24
<u>Avg. High Cost Multiple +:</u>	0.48	33
<u>High Cost Multiple +:</u>	0.30	35

Labor Force	(Quarterly)	Past 12 Mos	Rank
<u>IUR (%):</u>	1.4	1.5	40
<u>TUR (%):</u>	4.9	4.7	15
<u>Total Unemp. (000):</u>	149.8	143.0	15
<u>Insured Unemployed (000) ***</u>			
<u>Regular Programs:</u>	37.3	41.5	22
<u>All Programs:</u>	37.3	41.5	22
<u>Reciency Rates (%) ***</u>			
<u>Regular Programs:</u>	25	29	47
<u>All Programs:</u>	25	29	47
<u>Covered Emp. (000)**:</u>	2,706	2,688	17
<u>Civ. Labor Force (000):</u>	3,065	3,037	17
<u>Subj. Employers (000):</u>	116	115	22

Extended Benefits	(Quarterly)	Past 12 Months
<u>Extended Benefits (000):</u>	\$0	\$0
EB First Payments:	0	0
EB Weeks Claimed:	0	0
EB Exhaustions:	0	0

Loans	Rank
<u>Outstanding Loan Bal (000):</u>	\$0 2
Loan per Cov Employee:	\$0 2
Loan as % of Total Wages*:	0 2

* Based on extrapolated wages for the most recent 12 months.

** Wages and Covered Employment lag the rest of the Data Summary information by six months

*** Regular programs include State UI, UCFE and UCX.

+ Refers to most recent calendar year. Fourth and first quarter issues publish measure based on extrapolated wages. Second and third quarter issues publish measure based on actual wages.

See glossary for data definitions

Note: Blank cells appearing in any section of this report indicates that information is unavailable.

UI Data Summary for Texas

CYQ: 2007.4

Benefits	(Quarterly)	Past 12 Months	Rank	High Value : Qtr		Low Value : Qtr	
<u>Benefits Paid (000):</u>	\$297,121	\$1,150,089	9	\$592,800	2002.1	\$15,273	1973.4
<u>Initial Claims:</u>	164,788	631,680	10	292,684	2001.4	59,692	1973.3
<u>First Payments:</u>	64,658	279,698	10	148,987	2001.4	24,909	1973.2
<u>Weeks Claimed:</u>	1,222,238	4,816,577	8	2,704,288	2002.1	377,514	1973.3
<u>Wks Compensated:</u>	1,046,318	4,145,848	8	2,360,139	2002.1	306,120	1973.4
<u>Exhaustions:</u>	26,784	107,958	8	112,555	2002.1	9,367	1973.4
<u>Exhaustion Rate:</u>		36.5%	20	67.2%	2002.1	29.7%	1982.2
<u>Average Duration:</u>		14.8	21	17.0	2004.2	10.7	1975.1
<u>AWBA:</u>	\$293.87	\$286.83	20	\$293.87	2007.4	\$40.91	1971.3
As % of AWW:	35.3		34				
<u>Avg. Benefits per First Payment:</u>		\$4,112					

Financial Information	Past 12 Months	Rank
<u>State Revenues (000):</u>	\$1,055,240	10
<u>Total Wages (000)**:</u>	\$107,230,180	3
<u>Total Wages (Taxable Employers)(000)**:</u>	\$90,770,680	2
<u>Taxable Wages (000)**:</u>	\$17,091,129	2
<u>Avg. Weekly Wage**:</u>	\$833.10	13
<u>Avg. Tax Rate on Taxable Wages (%) **:</u>	1.98	25
<u>Avg. Tax Rate on Total Wages (%) **:</u>	0.48	39
<u>Calendar Yr Taxable Wage Base:</u>	\$9,000	31
<u>Trust Fund (TF) Balance (000):</u>		
(Including Loans):	\$1,774,694	6
<u>TF as % of Total Wages*:</u>	0.46	42
<u>Interest Earned (000):</u>	\$24,548	4
<u>Avg. High Cost Multiple +:</u>	0.44	36
<u>High Cost Multiple +:</u>	0.40	30

Labor Force	(Quarterly)	Past 12 Mos	Rank
<u>IUR (%):</u>	0.9	1.0	48
<u>TUR (%):</u>	4.2	4.4	30
<u>Total Unemp. (000):</u>	480.2	499.6	2
Insured Unemployed (000) ***			
<u>Regular Programs:</u>	94.1	96.5	9
<u>All Programs:</u>	94.1	96.6	9
Reciency Rates (%) ***			
<u>Regular Programs:</u>	20	19	50
<u>All Programs:</u>	20	19	50
<u>Covered Emp. (000)**:</u>	10,057	9,898	2
<u>Civ. Labor Force (000):</u>	11,566	11,492	2
<u>Subj. Employers (000):</u>	442	435	4

Extended Benefits	(Quarterly)	Past 12 Months
<u>Extended Benefits (000):</u>	\$0	\$0
EB First Payments:	0	0
EB Weeks Claimed:	0	0
EB Exhaustions:	0	0

Loans	Rank
<u>Outstanding Loan Bal (000):</u>	\$0 2
Loan per Cov Employee:	\$0 2
Loan as % of Total Wages*:	0 2

* Based on extrapolated wages for the most recent 12 months.

** Wages and Covered Employment lag the rest of the Data Summary information by six months

*** Regular programs include State UI, UCFE and UCX.

+ Refers to most recent calendar year. Fourth and first quarter issues publish measure based on extrapolated wages. Second and third quarter issues publish measure based on actual wages.

See glossary for data definitions

Note: Blank cells appearing in any section of this report indicates that information is unavailable.

UI Data Summary for Utah

CYQ: 2007.4

Benefits	(Quarterly)	Past 12 Months	Rank	High Value : Qtr		Low Value : Qtr	
<u>Benefits Paid (000):</u>	\$28,282	\$98,509	41	\$79,889	2002.1	\$3,256	1973.3
<u>Initial Claims:</u>	20,721	60,577	40	38,001	1982.4	10,343	1973.2
<u>First Payments:</u>	8,678	26,303	40	20,398	2001.4	4,234	2006.3
<u>Weeks Claimed:</u>	116,965	409,625	42	398,806	1983.1	78,788	1973.3
<u>Wks Compensated:</u>	96,049	333,487	42	307,666	1983.1	60,361	1973.3
<u>Exhaustions:</u>	1,856	7,195	45	8,568	1983.1	1,303	1973.3
<u>Exhaustion Rate:</u>		30.7%	35	46.6%	1983.2	20.5%	1978.3
<u>Average Duration:</u>		12.7	45	16.6	1983.3	10.7	1996.3
<u>AWBA:</u>	\$300.87	\$294.07	15	\$300.87	2007.4	\$44.14	1971.2
As % of AWW:	44.0		7				
<u>Avg. Benefits per First Payment:</u>		\$3,745					

Financial Information	Past 12 Months	Rank
<u>State Revenues (000):</u>	\$198,437	33
<u>Total Wages (000)**:</u>	\$10,574,665	33
<u>Total Wages (Taxable Employers)(000)**:</u>	\$8,735,964	33
<u>Taxable Wages (000)**:</u>	\$5,737,511	24
<u>Avg. Weekly Wage**:</u>	\$683.38	38
<u>Avg. Tax Rate on Taxable Wages (%) **:</u>	1.04	49
<u>Avg. Tax Rate on Total Wages (%) **:</u>	0.60	31
<u>Calendar Yr Taxable Wage Base:</u>	\$25,400	6
<u>Trust Fund (TF) Balance (000):</u>		
(Including Loans):	\$842,680	13
<u>TF as % of Total Wages*:</u>	2.32	12
<u>Interest Earned (000):</u>	\$10,142	13
<u>Avg. High Cost Multiple +:</u>	1.44	9
<u>High Cost Multiple +:</u>	1.15	5

Labor Force	(Quarterly)	Past 12 Mos	Rank
<u>IUR (%):</u>	0.8	0.7	52
<u>TUR (%):</u>	2.7	2.7	51
<u>Total Unemp. (000):</u>	37.4	36.3	36
Insured Unemployed (000) ***			
<u>Regular Programs:</u>	9.5	8.4	41
<u>All Programs:</u>	9.5	8.4	41
Reciency Rates (%) ***			
<u>Regular Programs:</u>	25	23	45
<u>All Programs:</u>	25	23	45
<u>Covered Emp. (000)**:</u>	1,187	1,163	33
<u>Civ. Labor Force (000):</u>	1,384	1,362	32
<u>Subj. Employers (000):</u>	71	69	32

Extended Benefits	(Quarterly)	Past 12 Months
<u>Extended Benefits (000):</u>	\$0	\$0
EB First Payments:	0	0
EB Weeks Claimed:	0	0
EB Exhaustions:	0	0

Loans	Rank
<u>Outstanding Loan Bal (000):</u>	\$0 2
Loan per Cov Employee:	\$0 2
Loan as % of Total Wages*:	0 2

* Based on extrapolated wages for the most recent 12 months.

** Wages and Covered Employment lag the rest of the Data Summary information by six months

*** Regular programs include State UI, UCFE and UCX.

+ Refers to most recent calendar year. Fourth and first quarter issues publish measure based on extrapolated wages. Second and third quarter issues publish measure based on actual wages.

See glossary for data definitions

Note: Blank cells appearing in any section of this report indicates that information is unavailable.

UI Data Summary for **Vermont**

CYQ: 2007.4

Benefits	(Quarterly)	Past 12 Months	Rank	High Value : Qtr		Low Value : Qtr	
Benefits Paid (000):	\$19,073	\$91,743	47	\$35,804	2003.1	\$2,018	1973.3
Initial Claims:	16,502	43,756	44	21,356	1982.4	4,424	1988.3
First Payments:	6,601	22,967	45	11,432	1991.1	2,057	1988.3
Weeks Claimed:	80,604	357,155	49	172,983	1991.1	34,974	1988.3
Wks Compensated:	69,172	330,804	49	154,357	1991.1	29,653	1988.3
Exhaustions:	1,120	4,218	48	2,755	1975.3	400	1989.1
Exhaustion Rate:		18.6%	51	37.4%	1976.1	11.8%	2000.4
Average Duration:		14.4	26	19.1	1976.1	11.4	1989.4
AWBA:	\$287.46	\$287.10	25	\$293.90	2007.1	\$53.47	1971.1
As % of AWW:	41.9		11				
Avg. Benefits per First Payment:		\$3,995					

Financial Information	Past 12 Months	Rank
State Revenues (000):	\$64,132	48
Total Wages (000)**:	\$2,646,335	50
Total Wages (Taxable Employers)(000)**:	\$1,876,547	52
Taxable Wages (000)**:	\$358,105	52
Avg. Weekly Wage**:	\$686.96	36
Avg. Tax Rate on Taxable Wages (%) **:	2.88	9
Avg. Tax Rate on Total Wages (%) **:	0.75	21
Calendar Yr Taxable Wage Base:	\$8,000	41
Trust Fund (TF) Balance (000):		
(Including Loans):	\$177,613	45
TF as % of Total Wages*:	2.28	13
Interest Earned (000):	\$2,221	45
Avg. High Cost Multiple +:	1.21	11
High Cost Multiple +:	0.72	17

Labor Force	(Quarterly)	Past 12 Mos	Rank
IUR (%):	2.0	2.2	17
TUR (%):	3.5	3.9	39
Total Unemp. (000):	12.3	13.8	49
Insured Unemployed (000) ***			
Regular Programs:	6.0	6.6	48
All Programs:	6.0	6.6	48
Reciency Rates (%) ***			
Regular Programs:	49	48	8
All Programs:	49	48	8
Covered Emp. (000)**:	296	297	51
Civ. Labor Force (000):	352	354	49
Subj. Employers (000):	22	22	49

Extended Benefits	(Quarterly)	Past 12 Months
Extended Benefits (000):	\$0	\$0
EB First Payments:	0	0
EB Weeks Claimed:	0	0
EB Exhaustions:	0	0

Loans	Rank
Outstanding Loan Bal (000):	\$0 2
Loan per Cov Employee:	\$0 2
Loan as % of Total Wages*:	0 2

* Based on extrapolated wages for the most recent 12 months.

** Wages and Covered Employment lag the rest of the Data Summary information by six months

*** Regular programs include State UI, UCFE and UCX.

+ Refers to most recent calendar year. Fourth and first quarter issues publish measure based on extrapolated wages. Second and third quarter issues publish measure based on actual wages.

See glossary for data definitions

Note: Blank cells appearing in any section of this report indicates that information is unavailable.

UI Data Summary for Virgin Islands

CYQ: 2007.4

Benefits	(Quarterly)	Past 12 Months	Rank	High Value : Qtr		Low Value : Qtr	
				Value	Year	Value	Year
Benefits Paid (000):	\$3,057	\$9,367	53	\$21,838	2002.4	\$277	1988.1
Initial Claims:	825	3,227	53	3,877	1995.4	332	2000.1
First Payments:	598	2,006	53	3,838	1995.4	107	1978.1
Weeks Claimed:	10,518	34,563	53	25,858	1994.1	215	1974.3
Wks Compensated:	9,419	30,754	53	37,242	1995.4	2,660	1988.1
Exhaustions:	206	738	52	1,170	1994.2	51	1978.1
Exhaustion Rate:		42.4%	8	70.6%	2003.3	20.5%	1991.1
Average Duration:		15.3	14	41.3	1978.1	10.9	1991.1
AWBA:	\$338.13	\$318.54	6	\$338.13	2007.4	\$62.61	1978.4
As % of AWW:	49.4		2				
Avg. Benefits per First Payment:		\$4,669					

Financial Information	Past 12 Months	Rank
State Revenues (000):	\$1,556	53
Total Wages (000)**:	\$411,409	53
Total Wages (Taxable Employers)(000)**:	\$291,538	53
Taxable Wages (000)**:	\$185,056	53
Avg. Weekly Wage**:	\$684.86	37
Avg. Tax Rate on Taxable Wages (%) **:	0.23	53
Avg. Tax Rate on Total Wages (%) **:	0.13	53
Calendar Yr Taxable Wage Base:	\$21,800	12
Trust Fund (TF) Balance (000):		
(Including Loans):	\$22,287	53
TF as % of Total Wages*:	1.96	14
Interest Earned (000):	\$291	53
Avg. High Cost Multiple +:	0.78	27
High Cost Multiple +:	0.68	20

Labor Force	(Quarterly)	Past 12 Mos	Rank
IUR (%):	1.4	1.2	22
TUR (%):			
Total Unemp. (000):			
Insured Unemployed (000) ***			
Regular Programs:	0.7	0.6	53
All Programs:	0.7	0.6	53
Reciency Rates (%) ***			
Regular Programs:			
All Programs:			
Covered Emp. (000)**:	46	45	53
Civ. Labor Force (000):			
Subj. Employers (000):	4	4	53

Extended Benefits	(Quarterly)	Past 12 Months
Extended Benefits (000):	\$0	\$0
EB First Payments:	0	0
EB Weeks Claimed:	0	0
EB Exhaustions:	0	0

Loans	Rank
Outstanding Loan Bal (000):	\$0 2
Loan per Cov Employee:	\$0 2
Loan as % of Total Wages*:	0 2

* Based on extrapolated wages for the most recent 12 months.

** Wages and Covered Employment lag the rest of the Data Summary information by six months

*** Regular programs include State UI, UCFE and UCX.

+ Refers to most recent calendar year. Fourth and first quarter issues publish measure based on extrapolated wages. Second and third quarter issues publish measure based on actual wages.

See glossary for data definitions

Note: Blank cells appearing in any section of this report indicates that information is unavailable.

UI Data Summary for Virginia

CYQ: 2007.4

Benefits	(Quarterly)	Past 12 Months	Rank	High Value : Qtr		Low Value : Qtr	
<u>Benefits Paid (000):</u>	\$86,694	\$363,789	25	\$207,301	2002.1	\$2,738	1972.4
<u>Initial Claims:</u>	74,219	268,207	22	185,586	1991.1	16,939	1973.2
<u>First Payments:</u>	26,868	111,988	25	96,342	1975.1	5,286	1973.3
<u>Weeks Claimed:</u>	412,128	1,693,874	24	847,708	1975.1	83,251	1972.4
<u>Wks Compensated:</u>	319,628	1,384,335	27	759,236	1975.2	52,602	1972.4
<u>Exhaustions:</u>	8,193	36,572	24	18,990	2002.2	1,301	1972.4
<u>Exhaustion Rate:</u>		33.1%	28	42.9%	1975.2	14.3%	1990.3
<u>Average Duration:</u>		12.4	47	15.4	1976.1	7.5	1990.1
<u>AWBA:</u>	\$278.23	\$267.25	30	\$313.81	2002.2	\$45.63	1971.3
As % of AWW:	33.1		38				
<u>Avg. Benefits per First Payment:</u>		\$3,248					

Financial Information	Past 12 Months	Rank
<u>State Revenues (000):</u>	\$416,274	21
<u>Total Wages (000)**:</u>	\$38,281,804	12
<u>Total Wages (Taxable Employers)(000)**:</u>	\$32,121,705	12
<u>Taxable Wages (000)**:</u>	\$4,834,689	16
<u>Avg. Weekly Wage**:</u>	\$841.41	11
<u>Avg. Tax Rate on Taxable Wages (%) **:</u>	1.50	38
<u>Avg. Tax Rate on Total Wages (%) **:</u>	0.32	50
<u>Calendar Yr Taxable Wage Base:</u>	\$8,000	41
<u>Trust Fund (TF) Balance (000):</u>		
(Including Loans):	\$775,202	16
<u>TF as % of Total Wages*:</u>	0.58	40
<u>Interest Earned (000):</u>	\$9,703	16
<u>Avg. High Cost Multiple +:</u>	0.70	28
<u>High Cost Multiple +:</u>	0.44	26

Labor Force	(Quarterly)	Past 12 Mos	Rank
<u>IUR (%):</u>	0.9	0.9	50
<u>TUR (%):</u>	3.1	3.0	45
<u>Total Unemp. (000):</u>	124.8	123.2	22
Insured Unemployed (000) ***			
<u>Regular Programs:</u>	32.5	33.2	24
<u>All Programs:</u>	32.5	33.2	24
Reciency Rates (%) ***			
<u>Regular Programs:</u>	26	27	43
<u>All Programs:</u>	26	27	43
<u>Covered Emp. (000)**:</u>	3,540	3,501	12
<u>Civ. Labor Force (000):</u>	4,063	4,054	12
<u>Subj. Employers (000):</u>	187	186	13

Extended Benefits	(Quarterly)	Past 12 Months
<u>Extended Benefits (000):</u>	\$0	\$0
EB First Payments:	0	0
EB Weeks Claimed:	0	0
EB Exhaustions:	0	0

Loans	Rank
<u>Outstanding Loan Bal (000):</u>	\$0 2
Loan per Cov Employee:	\$0 2
Loan as % of Total Wages*:	0 2

* Based on extrapolated wages for the most recent 12 months.

** Wages and Covered Employment lag the rest of the Data Summary information by six months

*** Regular programs include State UI, UCFE and UCX.

+ Refers to most recent calendar year. Fourth and first quarter issues publish measure based on extrapolated wages. Second and third quarter issues publish measure based on actual wages.

See glossary for data definitions

Note: Blank cells appearing in any section of this report indicates that information is unavailable.

UI Data Summary for Washington

CYQ: 2007.4

Benefits	(Quarterly)	Past 12 Months	Rank	High Value : Qtr		Low Value : Qtr	
Benefits Paid (000):	\$188,036	\$704,181	13	\$502,782	2002.1	\$28,236	1972.3
Initial Claims:	134,180	412,460	14	206,872	2001.4	76,810	1979.2
First Payments:	53,328	168,734	13	89,272	2001.4	26,788	1979.2
Weeks Claimed:	681,548	2,562,292	14	1,756,873	2002.1	459,778	1979.3
Wks Compensated:	572,510	2,214,839	14	1,646,496	2002.1	353,807	1979.3
Exhaustions:	7,797	34,359	25	30,315	1971.1	5,488	1979.3
Exhaustion Rate:		20.6%	50	41.5%	1976.1	19.2%	1980.1
Average Duration:		13.1	42	19.5	2002.4	12.4	1979.4
AWBA:	\$344.61	\$334.58	5	\$344.61	2007.4	\$57.77	1972.3
As % of AWW:	41.3		12				
Avg. Benefits per First Payment:		\$4,173					

Financial Information	Past 12 Months	Rank
State Revenues (000):	\$1,235,150	8
Total Wages (000)**:	\$30,739,474	14
Total Wages (Taxable Employers)(000)**:	\$24,279,924	14
Taxable Wages (000)**:	\$16,067,483	7
Avg. Weekly Wage**:	\$834.74	12
Avg. Tax Rate on Taxable Wages (%) **:	2.10	21
Avg. Tax Rate on Total Wages (%) **:	1.23	4
Calendar Yr Taxable Wage Base:	\$31,400	2
Trust Fund (TF) Balance (000):		
(Including Loans):	\$3,794,156	1
TF as % of Total Wages*:	3.76	1
Interest Earned (000):	\$45,806	1
Avg. High Cost Multiple +:	1.54	6
High Cost Multiple +:	0.98	8

Labor Force	(Quarterly)	Past 12 Mos	Rank
IUR (%):	1.8	1.8	20
TUR (%):	4.4	4.5	22
Total Unemp. (000):	152.9	154.7	13
Insured Unemployed (000) ***			
Regular Programs:	53.2	50.5	14
All Programs:	53.2	50.5	14
Reciency Rates (%) ***			
Regular Programs:	35	33	28
All Programs:	35	33	28
Covered Emp. (000)**:	2,863	2,821	15
Civ. Labor Force (000):	3,451	3,408	13
Subj. Employers (000):	203	198	11

Extended Benefits	(Quarterly)	Past 12 Months
Extended Benefits (000):	\$1	\$2
EB First Payments:	1	1
EB Weeks Claimed:	0	0
EB Exhaustions:	0	2

Loans	Rank	
Outstanding Loan Bal (000):	\$0	2
Loan per Cov Employee:	\$0	2
Loan as % of Total Wages*:	0	2

* Based on extrapolated wages for the most recent 12 months.

** Wages and Covered Employment lag the rest of the Data Summary information by six months

*** Regular programs include State UI, UCFE and UCX.

+ Refers to most recent calendar year. Fourth and first quarter issues publish measure based on extrapolated wages. Second and third quarter issues publish measure based on actual wages.

See glossary for data definitions

Note: Blank cells appearing in any section of this report indicates that information is unavailable.

UI Data Summary for **West Virginia**

CYQ: 2007.4

Benefits	(Quarterly)	Past 12 Months	Rank	<u>High Value : Qtr</u>		<u>Low Value : Qtr</u>	
Benefits Paid (000):	\$29,717	\$134,908	40	\$98,566	1983.1	\$3,940	1971.3
Initial Claims:	18,908	67,154	42	70,987	1977.1	13,253	2006.2
First Payments:	10,292	43,269	37	53,519	1977.1	7,534	2004.3
Weeks Claimed:	148,221	666,421	39	798,811	1983.1	136,981	1973.3
Wks Compensated:	126,012	581,921	39	723,321	1983.1	106,340	1973.3
Exhaustions:	2,231	10,015	42	14,289	1983.2	1,743	1971.2
Exhaustion Rate:		22.9%	48	42.1%	1983.3	12.3%	1979.1
Average Duration:		13.5	37	21.7	1983.4	9.3	1977.4
AWBA:	\$244.80	\$239.85	40	\$244.80	2007.4	\$36.07	1971.1
As % of AWW:	39.2		23				
Avg. Benefits per First Payment:		\$3,118					

Financial Information	Past 12 Months	Rank
State Revenues (000):	\$141,419	38
Total Wages (000)**:	\$5,738,796	41
Total Wages (Taxable Employers)(000)**:	\$4,293,039	40
Taxable Wages (000)**:	\$1,010,164	45
Avg. Weekly Wage**:	\$624.72	48
Avg. Tax Rate on Taxable Wages (%) **:	2.79	10
Avg. Tax Rate on Total Wages (%) **:	0.80	18
Calendar Yr Taxable Wage Base:	\$8,000	41
Trust Fund (TF) Balance (000):		
(Including Loans):	\$244,786	39
TF as % of Total Wages*:	1.40	21
Interest Earned (000):	\$3,077	39
Avg. High Cost Multiple +:	0.45	35
High Cost Multiple +:	0.35	32

Labor Force	(Quarterly)	Past 12 Mos	Rank
IUR (%):	1.7	2.0	27
TUR (%):	4.2	4.6	27
Total Unemp. (000):	34.0	37.0	37
Insured Unemployed (000) ***			
Regular Programs:	12.2	13.7	38
All Programs:	12.2	13.7	38
Reciency Rates (%) ***			
Regular Programs:	36	37	27
All Programs:	36	37	27
Covered Emp. (000)**:	688	684	39
Civ. Labor Force (000):	808	809	39
Subj. Employers (000):	37	37	43

Extended Benefits	(Quarterly)	Past 12 Months
Extended Benefits (000):	\$0	\$0
EB First Payments:	0	0
EB Weeks Claimed:	0	0
EB Exhaustions:	0	0

Loans	Rank
Outstanding Loan Bal (000):	\$0 2
Loan per Cov Employee:	\$0 2
Loan as % of Total Wages*:	0 2

* Based on extrapolated wages for the most recent 12 months.

** Wages and Covered Employment lag the rest of the Data Summary information by six months

*** Regular programs include State UI, UCFE and UCX.

+ Refers to most recent calendar year. Fourth and first quarter issues publish measure based on extrapolated wages. Second and third quarter issues publish measure based on actual wages.

See glossary for data definitions

Note: Blank cells appearing in any section of this report indicates that information is unavailable.

UI Data Summary for Wisconsin

CYQ: 2007.4

Benefits	(Quarterly)	Past 12 Months	Rank	High Value : Qtr		Low Value : Qtr	
Benefits Paid (000):	\$202,449	\$897,095	12	\$355,320	2002.1	\$13,881	1973.3
Initial Claims:	195,082	640,844	7	244,850	2001.4	40,405	1973.2
First Payments:	78,182	279,814	7	120,308	2002.1	15,946	1973.2
Weeks Claimed:	899,433	3,944,384	12	1,801,296	1983.1	291,967	1973.3
Wks Compensated:	828,599	3,678,462	12	1,600,491	1983.1	221,033	1973.3
Exhaustions:	15,906	69,167	14	35,071	1982.2	3,847	1973.3
Exhaustion Rate:		25.5%	45	39.7%	1982.4	14.8%	2000.4
Average Duration:		13.2	41	17.8	1976.1	10.9	2001.1
AWBA:	\$267.92	\$267.08	33	\$274.80	2007.1	\$56.98	1971.3
As % of AWW:	37.3		27				
Avg. Benefits per First Payment:		\$3,206					

Financial Information	Past 12 Months	Rank
State Revenues (000):	\$685,797	14
Total Wages (000)**:	\$25,385,724	19
Total Wages (Taxable Employers)(000)**:	\$19,677,503	22
Taxable Wages (000)**:	\$5,151,314	19
Avg. Weekly Wage**:	\$718.00	31
Avg. Tax Rate on Taxable Wages (%) **:	2.71	12
Avg. Tax Rate on Total Wages (%) **:	0.81	17
Calendar Yr Taxable Wage Base:	\$10,500	25
Trust Fund (TF) Balance (000):		
(Including Loans):	\$592,228	23
TF as % of Total Wages*:	0.72	36
Interest Earned (000):	\$7,827	21
Avg. High Cost Multiple +:	0.29	44
High Cost Multiple +:	0.23	42

Labor Force	(Quarterly)	Past 12 Mos	Rank
IUR (%):	2.5	2.8	10
TUR (%):	4.4	4.9	24
Total Unemp. (000):	134.8	151.4	17
Insured Unemployed (000) ***			
Regular Programs:	69.6	76.4	12
All Programs:	69.6	76.4	12
Reciency Rates (%) ***			
Regular Programs:	52	50	6
All Programs:	52	50	6
Covered Emp. (000)**:	2,770	2,743	16
Civ. Labor Force (000):	3,084	3,089	16
Subj. Employers (000):	131	131	20

Extended Benefits	(Quarterly)	Past 12 Months
Extended Benefits (000):	\$0	\$0
EB First Payments:	0	0
EB Weeks Claimed:	0	0
EB Exhaustions:	0	0

Loans	Rank
Outstanding Loan Bal (000):	\$0 2
Loan per Cov Employee:	\$0 2
Loan as % of Total Wages*:	0 2

* Based on extrapolated wages for the most recent 12 months.

** Wages and Covered Employment lag the rest of the Data Summary information by six months

*** Regular programs include State UI, UCFE and UCX.

+ Refers to most recent calendar year. Fourth and first quarter issues publish measure based on extrapolated wages. Second and third quarter issues publish measure based on actual wages.

See glossary for data definitions

Note: Blank cells appearing in any section of this report indicates that information is unavailable.

UI Data Summary for Wyoming

CYQ: 2007.4

Benefits	(Quarterly)	Past 12 Months	Rank	High Value : Qtr		Low Value : Qtr	
Benefits Paid (000):	\$7,805	\$33,490	50	\$25,268	1983.1	\$282	1974.3
Initial Claims:	7,099	20,903	51	15,650	1983.1	1,089	1973.3
First Payments:	2,764	9,618	51	10,956	1983.1	440	1974.3
Weeks Claimed:	33,021	135,978	51	172,109	1983.1	7,676	1974.3
Wks Compensated:	27,634	122,125	51	180,987	1983.1	5,338	1974.3
Exhaustions:	583	2,732	51	5,042	1983.2	137	1974.4
Exhaustion Rate:		28.8%	41	50.1%	1983.2	17.1%	1979.4
Average Duration:		12.7	44	19.7	1987.3	9.6	1976.3
AWBA:	\$286.34	\$278.28	27	\$286.34	2007.4	\$47.47	1971.3
As % of AWW:	39.5		20				
Avg. Benefits per First Payment:		\$3,482					

Financial Information	Past 12 Months	Rank
State Revenues (000):	\$54,007	50
Total Wages (000)**:	\$2,581,150	52
Total Wages (Taxable Employers)(000)**:	\$1,996,232	50
Taxable Wages (000)**:	\$991,344	49
Avg. Weekly Wage**:	\$725.27	28
Avg. Tax Rate on Taxable Wages (%) **:	1.47	39
Avg. Tax Rate on Total Wages (%) **:	0.70	22
Calendar Yr Taxable Wage Base:	\$20,100	13
Trust Fund (TF) Balance (000):		
(Including Loans):	\$243,500	40
TF as % of Total Wages*:	2.89	7
Interest Earned (000):	\$2,935	42
Avg. High Cost Multiple +:	1.13	13
High Cost Multiple +:	0.95	9

Labor Force	(Quarterly)	Past 12 Mos	Rank
IUR (%):	0.8	0.9	47
TUR (%):	2.9	3.0	46
Total Unemp. (000):	8.5	8.7	52
Insured Unemployed (000) ***			
Regular Programs:	2.3	2.5	51
All Programs:	2.3	2.5	51
Reciency Rates (%) ***			
Regular Programs:	27	29	41
All Programs:	27	29	41
Covered Emp. (000)**:	272	265	52
Civ. Labor Force (000):	289	288	52
Subj. Employers (000):	21	21	50

Extended Benefits	(Quarterly)	Past 12 Months
Extended Benefits (000):	\$0	\$0
EB First Payments:	0	0
EB Weeks Claimed:	0	0
EB Exhaustions:	0	0

Loans	Rank
Outstanding Loan Bal (000):	\$0 2
Loan per Cov Employee:	\$0 2
Loan as % of Total Wages*:	0 2

* Based on extrapolated wages for the most recent 12 months.

** Wages and Covered Employment lag the rest of the Data Summary information by six months

*** Regular programs include State UI, UCFE and UCX.

+ Refers to most recent calendar year. Fourth and first quarter issues publish measure based on extrapolated wages. Second and third quarter issues publish measure based on actual wages.

See glossary for data definitions

Note: Blank cells appearing in any section of this report indicates that information is unavailable.

UI Data Summary for **United States**

CYQ: 2007.4

Benefits

	(Quarterly)	Past 12 Months	High Value : Qtr		Low Value : Qtr	
Benefits Paid (000):	\$7,889,209	\$32,425,495	\$12,080,573	2002.1	\$860,035	1973.3
Initial Claims:	4,925,263	16,933,706	8,229,191	1975.1	2,671,661	1973.2
First Payments:	1,948,420	7,641,942	4,663,186	1975.1	1,074,462	1973.2
Weeks Claimed:	32,925,783	134,239,005	62,573,667	1975.1	18,445,892	1973.3
Wks Compensated:	27,962,701	116,315,020	54,739,150	1983.1	15,351,045	1973.3
Exhaustions:	664,751	2,670,383	1,285,185	1983.1	332,910	1973.4
Exhaustion Rate:		35.6%	43.7%	2003.3	25.8%	1979.2
Average Duration:		15.2	17.5	1983.3	12.4	1975.1
AWBA:	\$291.32	\$287.71	\$291.32	2007.4	\$52.64	1971.3
As % of AWW:	35.2					
Avg. Benefits Per First Payment:		\$4,243				

Financial Information

	Past 12 Months
State Revenues (000):	\$33,354,912
Total Wages (000)**:	\$1,412,170,894
Total Wages (Taxable Employers) (000)**:	\$1,133,521,337
Taxable Wages (000)**:	\$283,057,229
Avg. Weekly Wage**:	\$826.66
Avg. Tax Rate on Taxable Wages (%) **:	2.48
Avg. Tax Rate on Total Wages (%) **:	0.69
Avg. State CY Taxable Wage Base:	\$11,482
Trust Fund (TF) Balance (000):	
(Including Loans):	\$38,302,749
TF as % of Total Wages*:	0.80
Interest Earned (000):	\$488,344
Avg. High Cost Multiple +:	0.52
High Cost Multiple +:	0.36

Labor Force

	(Quarterly)	Past 12 Months
IUR (%) (NSA)	1.9	1.9
TUR (%) (NSA)	4.4	4.6
Total Unemployed (000):	7,020	7,078
Insured Unemployed (000) ***		
Regular Programs:	2,557.7	2,609.4
All Programs:	2,557.7	2,609.4
Reciency Rates (%) ***		
Regular Programs:	36	37
All Programs:	36	37
Cov. Employ. (000)**:	134,366	133,011
Civ. Labor Force (000):	157,772	155,185
Subject Employers (000):	7,662	7,622

Extended Benefits

	(Quarterly)	Past 12 Months
Extended Benefits (000):	\$2	\$31
EB First Payments:	3	37
EB Weeks Claimed:	4	63
EB Exhaustions:	0	5

Loans

Outstanding Loan Bal (000):	\$134,600
Loan per Cov Employee:	\$1.01
Loan as % of Total Wages*:	0.0028

* Based on extrapolated wages for the most recent 12 months.

** Wages and Covered Employment lag the rest of the Data Summary information by six months.

*** Regular programs include State UI, UCFE and UCX.

+ Refers to most recent calendar year. Fourth and first quarter issues publish measure based on extrapolated wages. Second and third quarter issues publish measure based on actual wages.

See glossary for data definitions

DATA DEFINITIONS

[Back to Data Summary Home](#)

[Back to State Selection Page](#)

AVERAGE BENEFITS PER FIRST PAYMENT

Benefits Paid for all weeks compensated divided by the number of first payments.

AVERAGE DURATION

The number of weeks compensated for the year divided by the number of first payments. (ETA 5159)

AVERAGE HIGH COST RATE

The average of the three highest calendar year benefit cost rates in the last 20 years (or a period including three recessions, if longer). Benefit cost rates are benefits paid (including the state's share of extended benefits but excluding reimbursable benefits) as a percent of total wages in taxable employment.

AVERAGE HIGH COST MULTIPLE (AHCM)

Calendar Year Reserve Ratio (or "TF as % of Total Wages"); divided by the Average High Cost Rate.

AVERAGE TAX RATE (Taxable Wages)

Total employer contributions for a 12 month period divided by the total taxable wages for the same time period. (ES 202)

AVERAGE TAX RATE (Total Wages)

Total employer contributions for a 12 month period divided by the total wages paid by taxable employers for the same time period. (ES 202)

AVERAGE WEEKLY BENEFIT AMOUNT (AWBA)

Benefits Paid for Total Unemployment divided by Weeks Compensated for Total Unemployment. (ETA 5159)

AVERAGE WEEKLY WAGE

Total wages divided by covered employment, divided by 52 weeks. (ES 202)

BENEFITS PAID

The Unemployment benefits paid to individuals under a state program, usually the first 26 weeks of benefits, for all weeks compensated including partial payments. (ETA 5159)

CIVILIAN LABOR FORCE

The average number of individuals who are either employed or unemployed in the week of the 12th for the three months of the quarter. (Bureau of Labor Statistics)

COVERED EMPLOYMENT

The number of employees covered by Unemployment Insurance reported to the states by employers. (ETA 202)

EXHAUSTIONS

Number of claimants drawing the final payment of their original entitlement for a given program. (ETA 5159)

DATA DEFINITIONS

[Back to Data Summary Home](#)

[Back to State Selection Page](#)

EXHAUSTION RATE

A rate computed by dividing the average monthly exhaustions by the average monthly first payments. To allow for the normal flow of claimants through the program, the numerator lags the denominator by 26 weeks, e.g., the exhaustion rate for CY 1995.3 is computed by dividing the average monthly exhaustions for the twelve months ending September 1995, by the average monthly first payments for the twelve months ending March 1995.

EXTENDED BENEFITS

The supplemental program that pays extended compensation during periods of specified high unemployment in a state to individuals for weeks of unemployment after exhaustion of regular UI benefits. One-half of EB is funded by the state trust fund. (ETA 5159)

FIRST PAYMENTS

The first payment in a benefit year for a week of unemployment claimed under a specific program. This is used as a proxy for "beneficiaries" under a specific program. (ETA 5159)

HIGH-COST MULTIPLE (HCM)

"TF as % of Total Wages" divided by the High Cost Rate. The High Cost Rate is the highest historical ratio of benefits to wages for a 12-month period.

HIGHEST/LOWEST QUARTER

The value displayed represents the quarter with the highest or lowest value beginning with the January through March quarter of 1971 (CY 1971.1). Exhaustion rate and average duration are for 4-quarter periods, ending with the quarter shown.

INITIAL CLAIMS

Any notice of unemployment filed (1) to request a determination of entitlement to and eligibility for compensation or (2) to begin a second or subsequent period of eligibility within a benefit year or period of eligibility. Interstate claims are counted in the paying state. (ETA 5159)

INSURED UNEMPLOYED

The average weekly number of weeks claimed for the three months of the quarter. (ETA 5159)

INSURED UNEMPLOYMENT RATE (IUR)

The rate computed by dividing Insured Unemployed for the current quarter by Covered Employment for the first four of the last six completed quarters. (ETA 539)

INTEREST EARNED

The amount of interest earned on the Unemployment Trust Fund account. (unpublished US Treasury reports)

DATA DEFINITIONS

[Back to Data Summary Home](#)

[Back to State Selection Page](#)

OUTSTANDING LOAN BALANCE	Balance, as of the end of the quarter, of advances acquired by the state under Title XII of the Social Security Act. (unpublished US Treasury reports)
RANK	All rankings are from highest to lowest for a particular item. Ties receive the same rank.
RECIPIENCY RATE	The insured unemployed in regular programs as a percent of total unemployed.
STATE REVENUE	Funds deposited in state accounts in the Unemployment Trust Fund (UTF). These revenues are used to pay state UI benefits and the state share of EB. (ETA 2112)
SUBJECT EMPLOYERS	The number of employers subject to UI taxes. (ETA 581)
TAX YEAR	The twelve-month time period in which a state's tax rate schedules and taxable wage base remain constant. This is equivalent to the calendar year for most states, with the exception of NH, NJ, TN, and VT. These 4 states have July-June tax years.
TAXABLE WAGES	Wages paid to covered employees that are subject to State Unemployment Insurance taxes. (ES 202)
TAXABLE WAGE BASE	For each State, the maximum amount of wages paid to an employee by an employer during a tax year which are subject to UI taxes. Wages above this amount are not subject to tax. Note: The taxable wage bases published in this report are current as of the date of issue. Therefore, they do not match the time period of the taxable wages and average tax rate on taxable wages.
TF AS % OF TOTAL WAGES	Trust fund balance as a percent of estimated wages for the most recent 12 months. Also referred to as the Reserve Ratio. Estimated wages are based on the latest growth rate in the 12 month moving average (MA). <i>Example for 1997.4: Growth rate = ((MA1997.2-MA1996.4)/MA1996.4); MA1997.4=MA1997.2*growth rate)</i>
TOTAL UNEMPLOYED	The average number of individuals, 16 years of age or older, who do not have a job but are available for work and actively seeking work in the week of the 12th for the three months of the quarter. This includes individuals on layoff and waiting to report to a new job within 30 days. (Bureau of Labor Statistics-Not Seasonally Adjusted)

DATA DEFINITIONS

[Back to Data Summary Home](#)

[Back to State Selection Page](#)

TOTAL UNEMPLOYMENT RATE (TUR)

The rate computed by dividing Total Unemployed by the Civilian Labor Force. (Bureau of Labor Statistics)

TOTAL WAGES

All wages or remuneration paid to workers on all payrolls covered by Unemployment Insurance. (ES 202)

TOTAL WAGES (Taxable Employers)

All wages or remuneration paid to workers by all taxable employers. (ES 202)

TRUST FUND BALANCE (TF)

The balance in the individual state account in the Unemployment Trust Fund. (unpublished US Treasury reports)

UCFE

Unemployment Compensation for Federal Civilian Employees

UCX

Unemployment Compensation for Ex-Service Members

UNEMPLOYMENT TRUST FUND (UTF)

A fund established in the Treasury of United States which contains all monies deposited by state agencies to the credit of their unemployment fund accounts and Federal unemployment taxes collected by the Internal Revenue Service.

WEEKS CLAIMED

The number of weeks of benefits claimed, including weeks for which a waiting period or fixed disqualification period is being served. Interstate claims are counted in the paying state. (ETA 5159)

WEEKS COMPENSATED

The number of weeks claimed for which UI benefits are paid. Weeks compensated for partial unemployment are included. Interstate claims are counted in the paying state. (ETA 5159)