

# WIA State Formula Spending for PY 2004

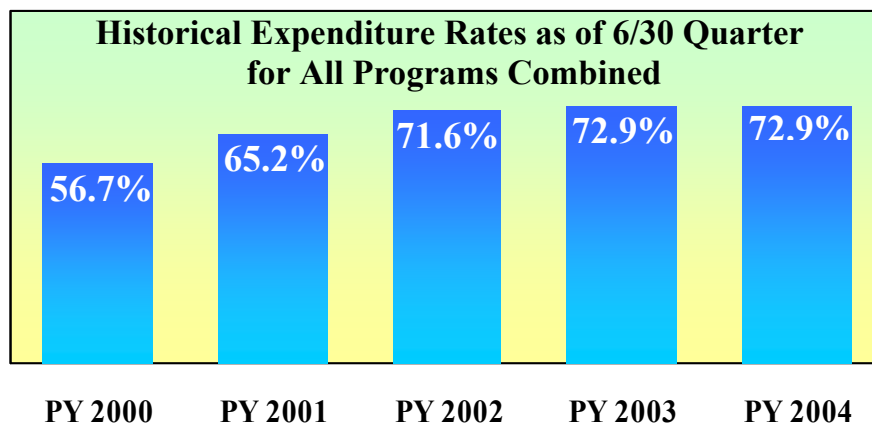


as of 6/30/05

U. S. Department of Labor  
Employment and Training Administration

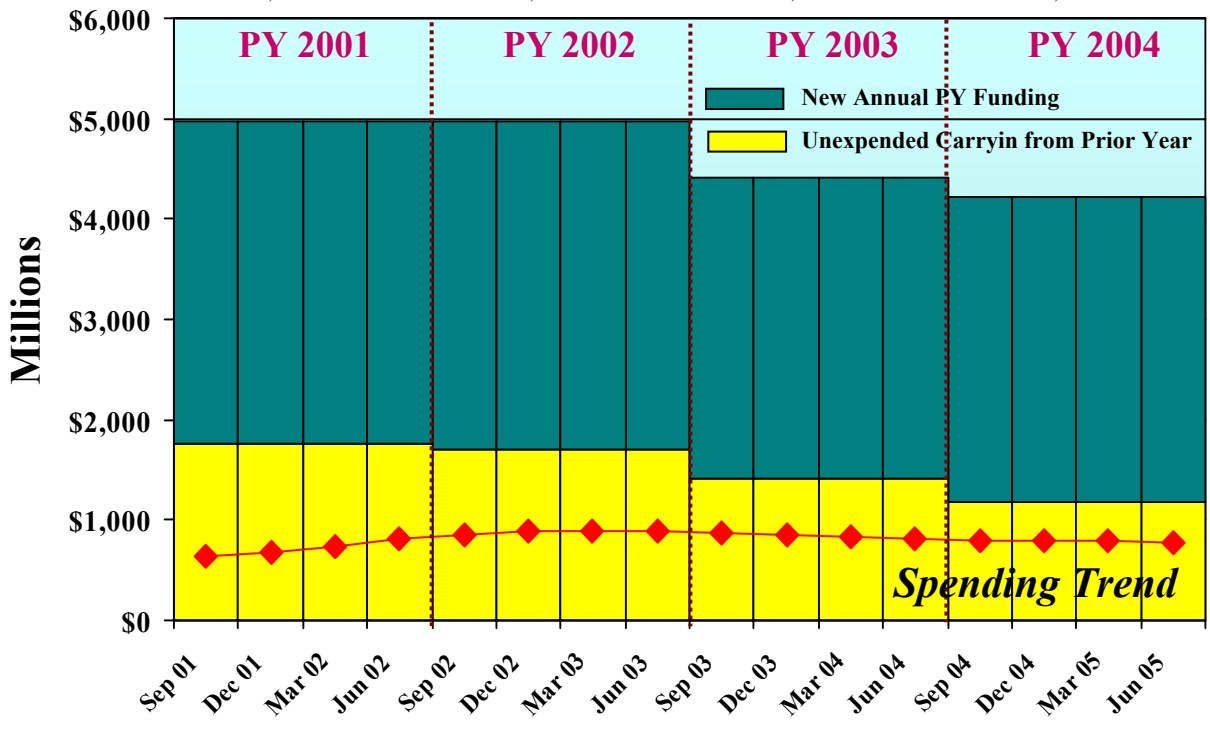
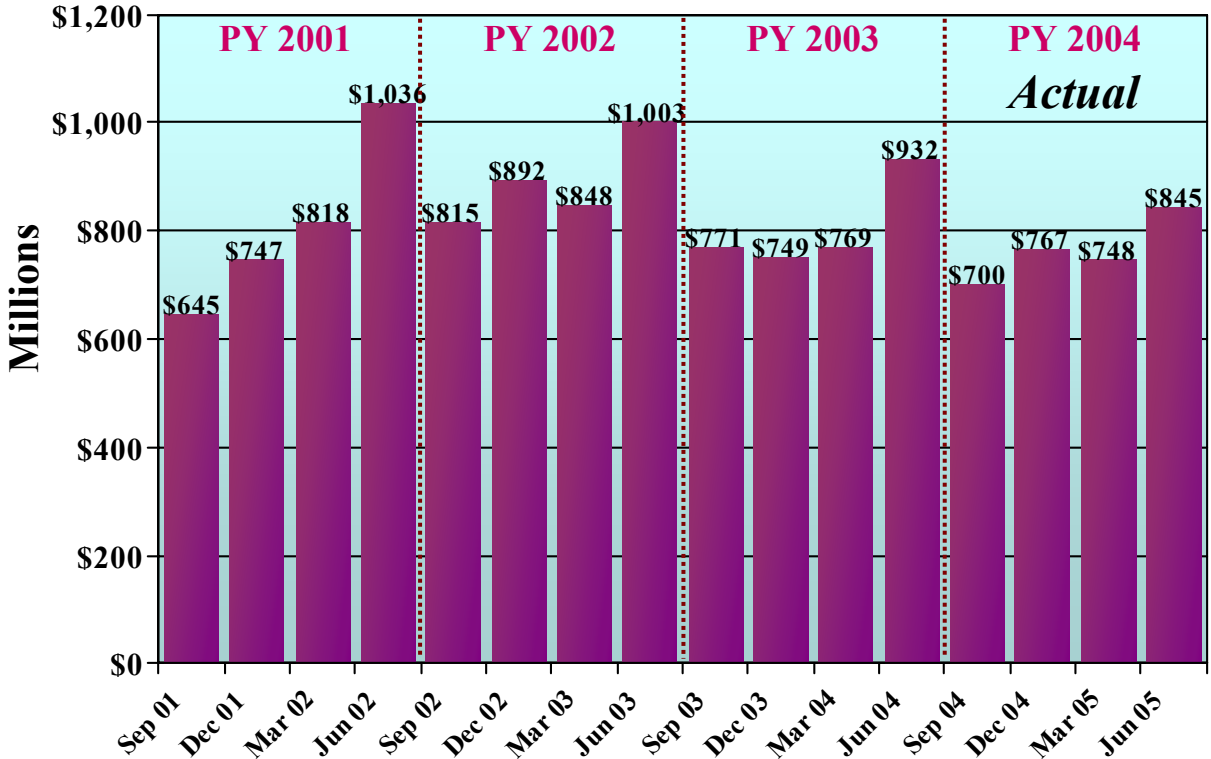
---

## WIA Adult, Youth and Dislocated Worker Formula Programs State Spending for PY 2004, as of the Quarter Ending 6/30/05 Highlights

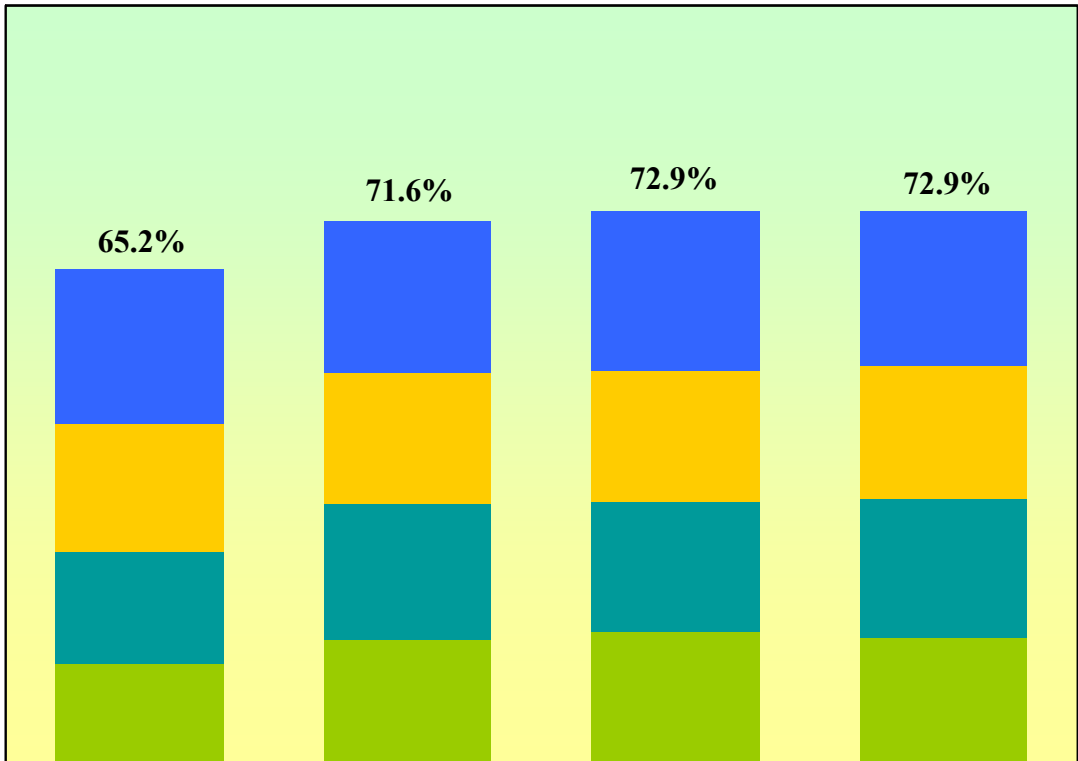


- Total available funding for States for all programs for PY 2004, including carry-in from prior years, is down \$206 million (-4.7%) from the funding level available a year ago. This decrease is due to a drop in carry-in (-\$227 million, -16.2%) offset slightly by an increase in new funding (\$21 million). Carry-in represents 28% of total funds available for PY 2004, as compared to 32% of funds in PY 2003.
- States were spending 73% of available funds in all three programs combined for PY 2004, exactly the same rate as for PY 2003. As of the end of PY 2004, 21 States showed increases in expenditure rates in all programs combined compared to PY 2003 rates.
- Total spending as of the end of PY 2004 (including the April – June quarter for the Youth program) was \$3,069.8 million, down \$152 million, or -4.7 %, compared to last year, and down \$495 million or -13.9% from PY 2002. This is likely due to the decrease in total funds available to spend.
- Expenditure rates for the Youth and Adults programs showed a slight increase from PY 2003, while the Dislocated Workers program showed a slight decrease. The Dislocated Workers program continued to spend a lower proportion of available funds than the other programs.
- Spending rates as of the end of PY 2004 at state and local activity levels were, respectively, 54.2% and 79.9%, compared to 58.9% and 78.5% in PY 2003. Since PY 2000, State spending rates have continued to lag behind local spending rates, and local administration activity spending rates, while higher than state activity level spending, have been lower than local program rates.
- At the end of PY 2004, 32 States had a total of \$115,548,857 unexpended funds in excess of 30% of total availability in all programs combined, of which \$6,579,561 was in Youth, \$18,400,242 in Adults, and \$90,569,054 in Dislocated Workers.

# WIA Youth/Adult/Dislocated Worker Formula Programs, Combined Net Quarterly State Spending , PY 2001-PY 2004 As of 6/30/05

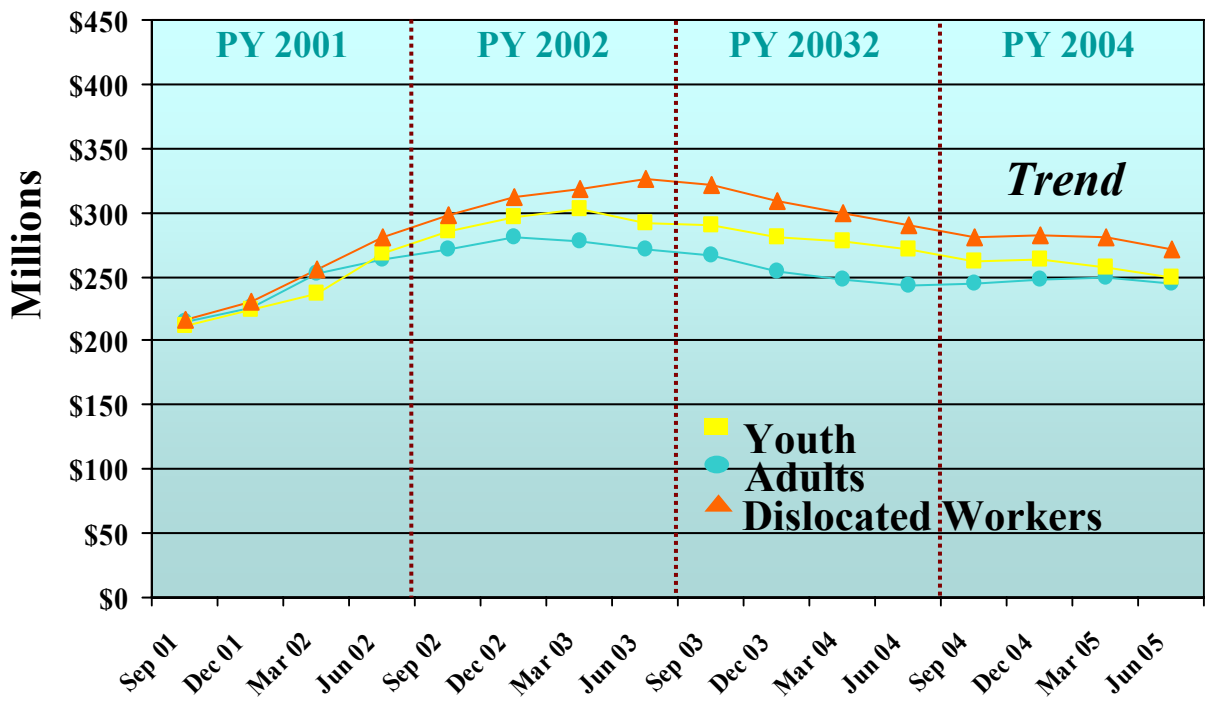
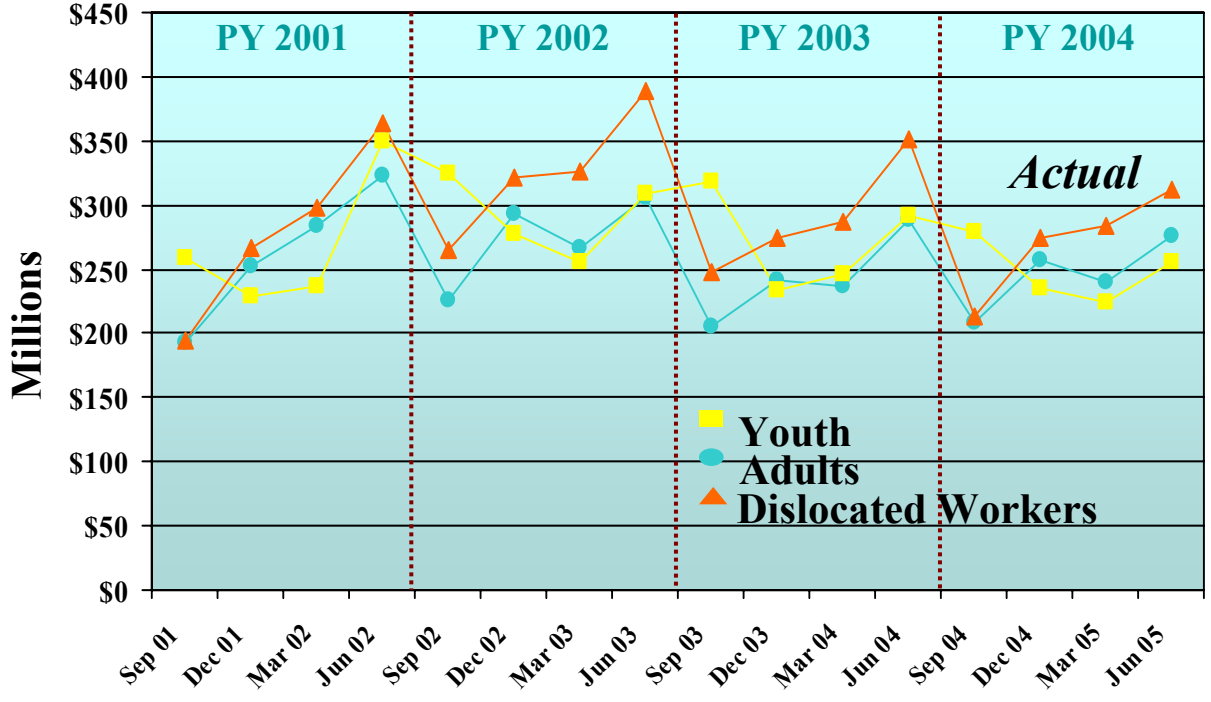


# WIA Youth/Adults/Dislocated Worker Formula Programs, Combined Expenditure Rates for PY 2001 - 2004

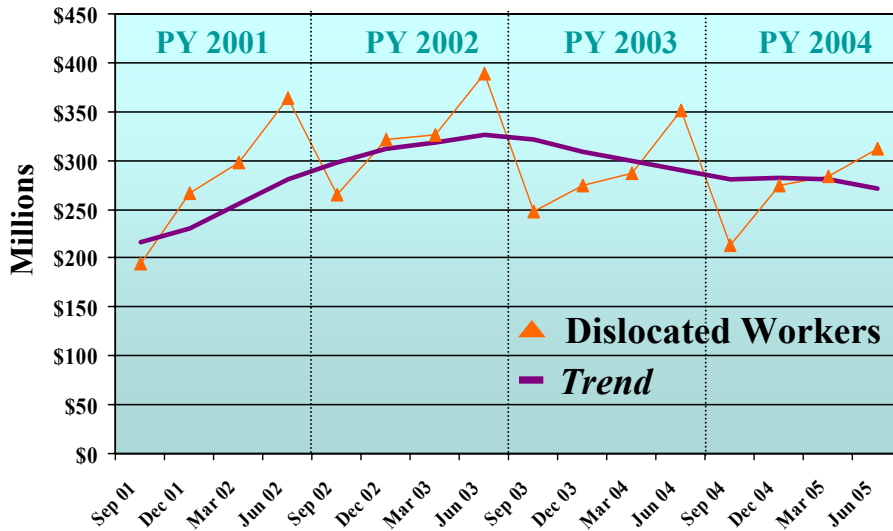
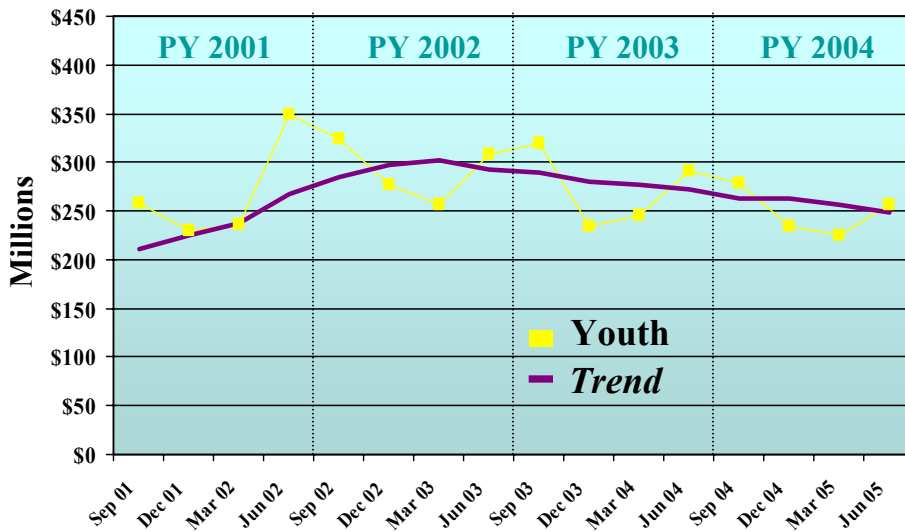
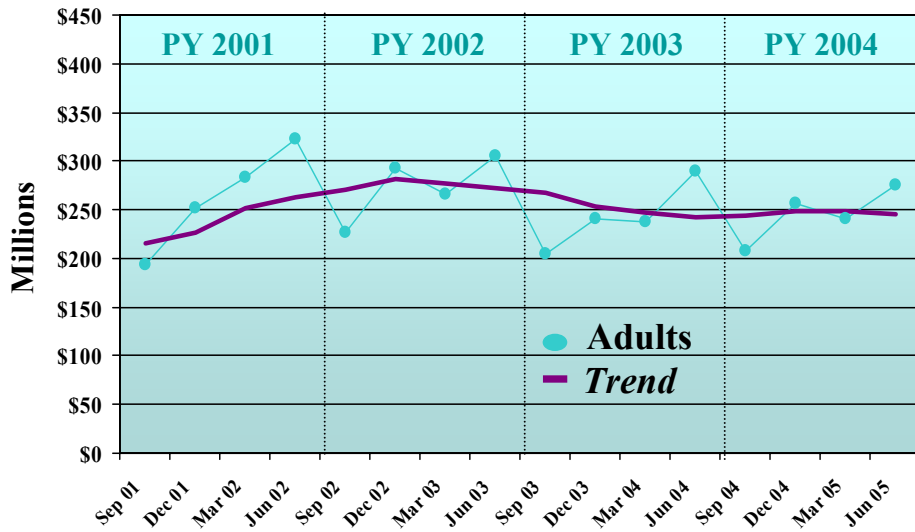


	PY 2001	PY 2002	PY 2003	PY 2004
<b>4th Qtr</b>	20.4%	20.1%	21.0%	20.2%
<b>3rd Qtr</b>	16.6%	17.0%	17.3%	17.7%
<b>2nd Qtr</b>	14.8%	17.9%	17.0%	18.2%
<b>1st Qtr</b>	13.4%	16.6%	17.6%	16.8%

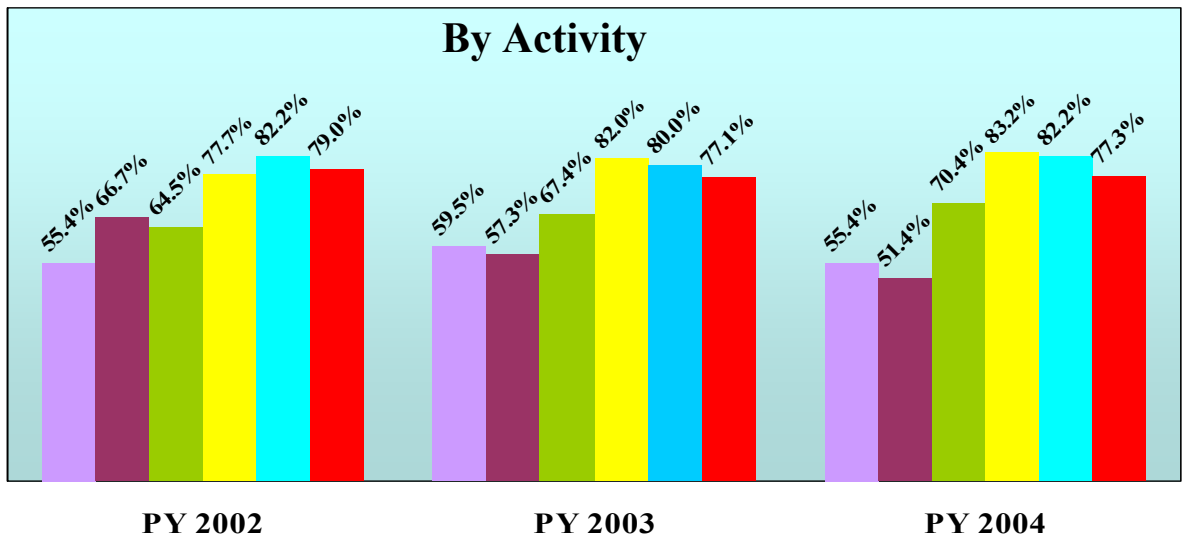
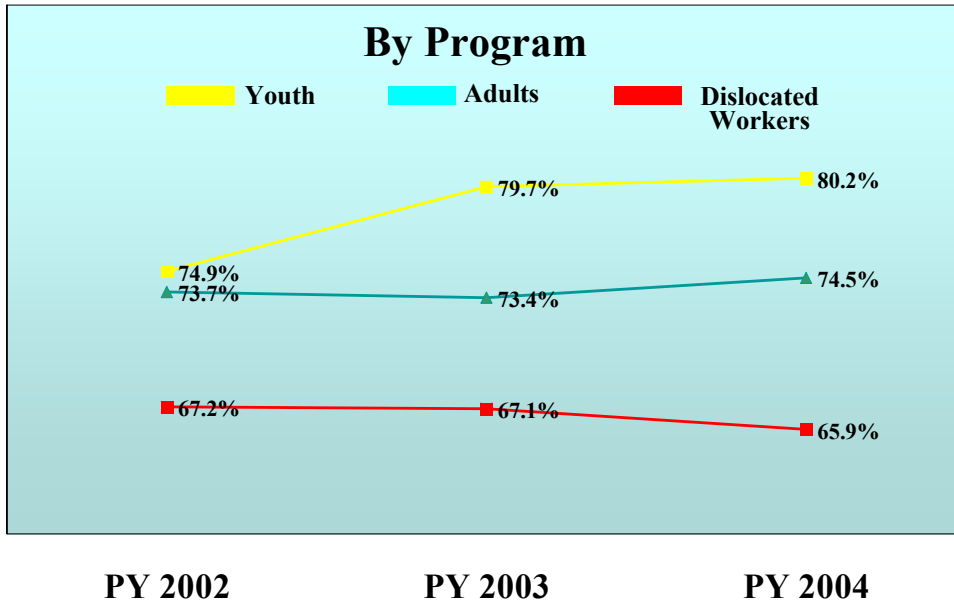
# WIA Youth/Adult/Dislocated Worker Formula Programs Net Quarterly State Spending , PY 2001-PY 2004 As of 6/30/05



# WIA Youth/Adult/Dislocated Worker Formula Programs Net Quarterly State Spending , PY 2001-PY 2004 As of 6/30/05



# WIA Formula Programs Expenditure Rates for PY 2002 - PY 2004 For Quarter Ending 6/30



**State Level Activities:**

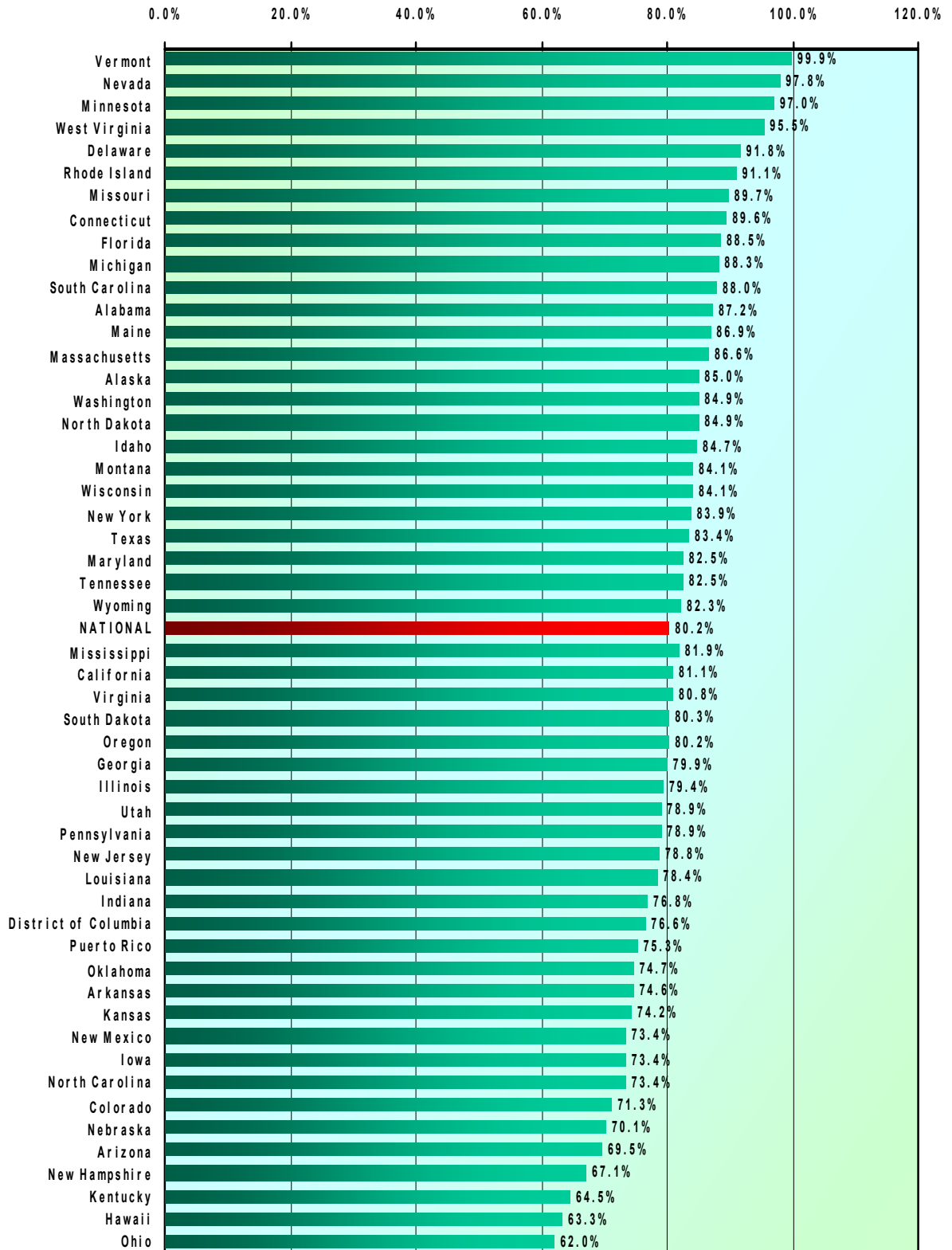
- Statewide 15%
- Statewide Rapid Response

**Local Level Activities:**

- Local Admin
- Local Youth
- Local Adults
- Local Dislocated Workers

# WIA Formula Programs Youth Program

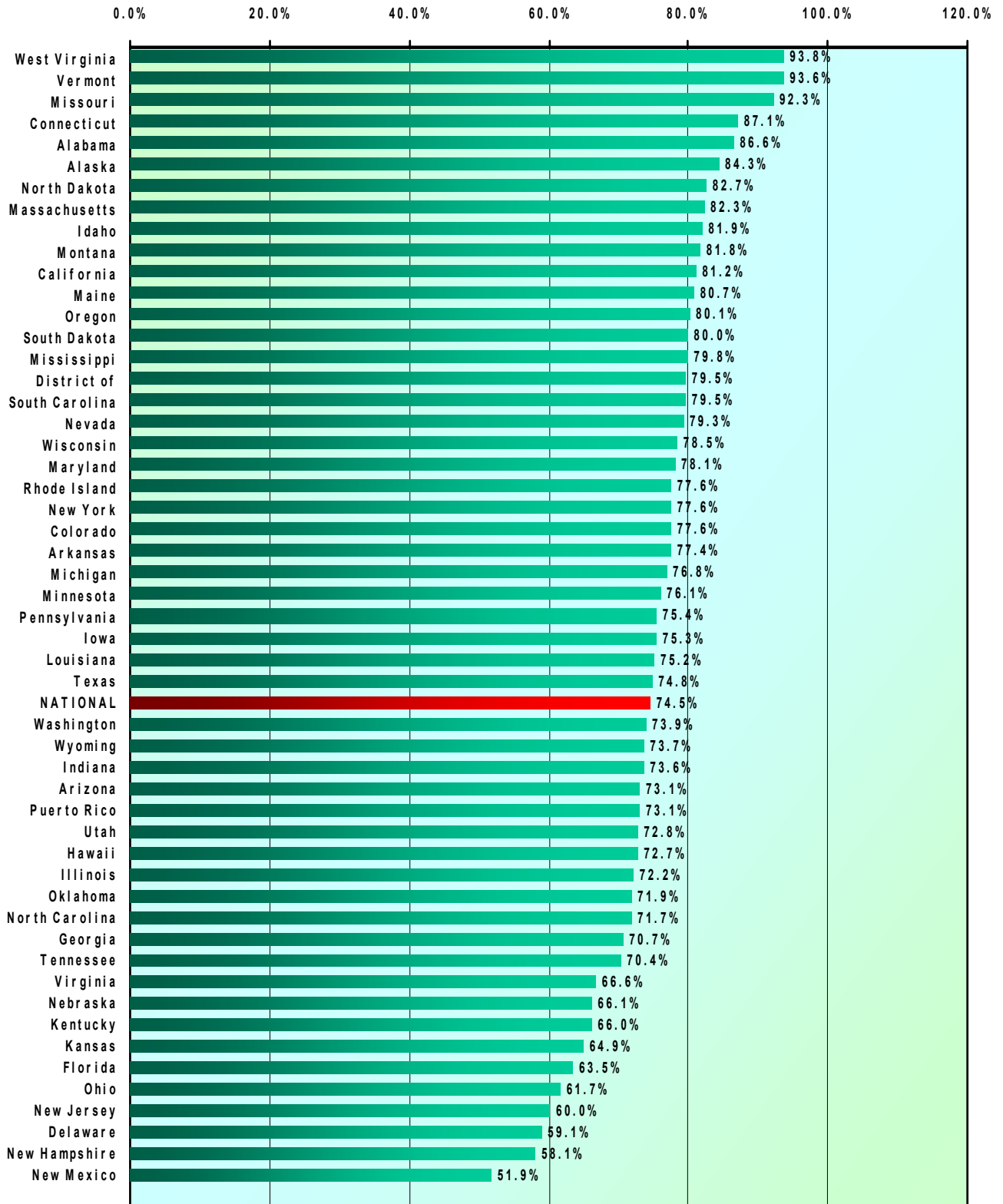
## State PY 2004 Expenditure Rates for Quarter Ending 6/30/05





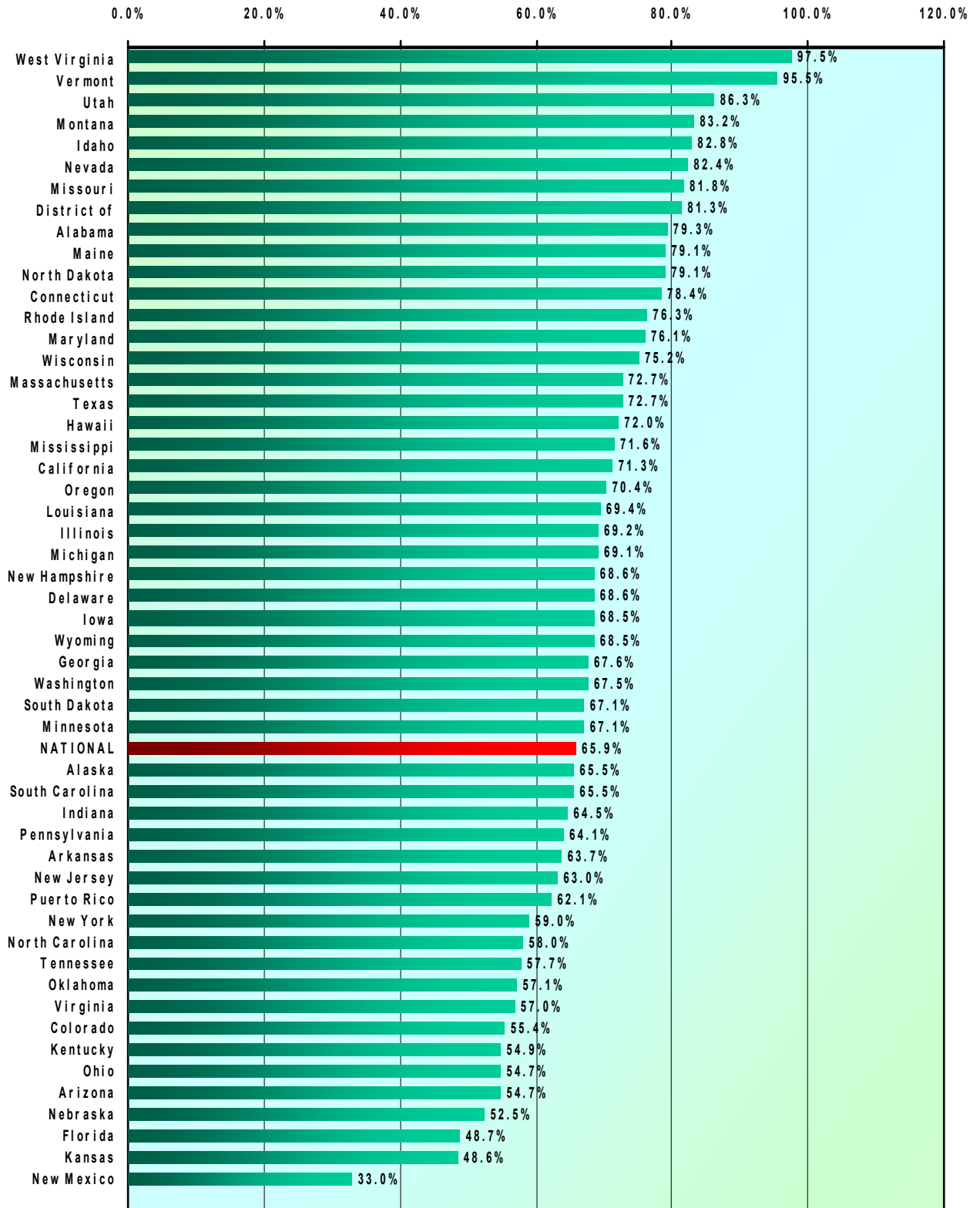
# WIA Formula Programs Adults Program

## State PY 2004 Expenditure Rates for Quarter Ending 6/30/05



# WIA Formula Programs Dislocated Workers Program

## State PY 2004 Expenditure Rates for Quarter Ending 6/30/05

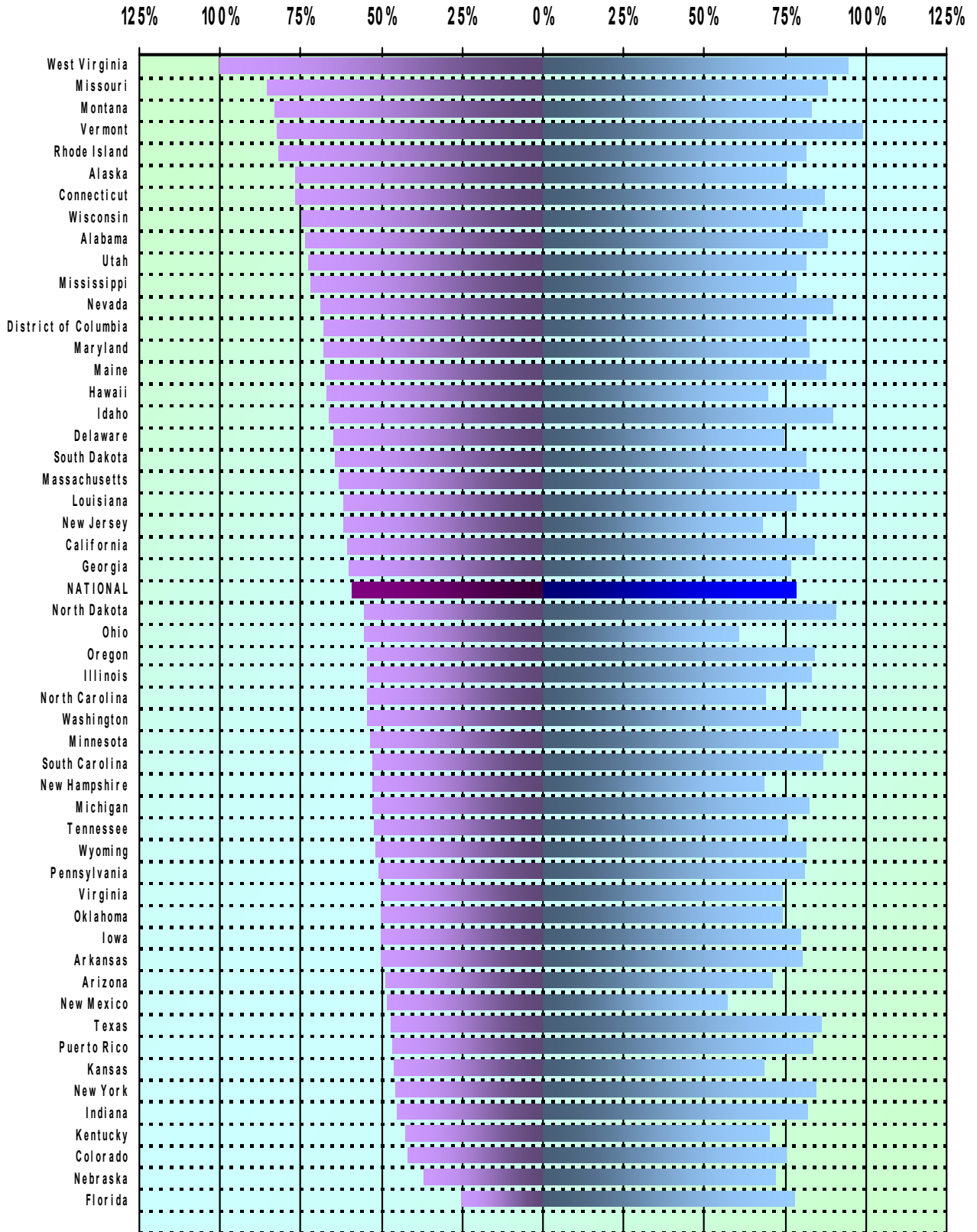


# WIA Formula Programs Combined

## PY 2004 Expenditure Rates as of Quarter Ending 6/30/05

State Level Activities

Local Level Activities



U. S. Department of Labor  
Employment and Training Administration  
**State Formula Spending for Program Year 2004 as of 6/30/05 Reports (as of 8/29/05)**  
**WIA Youth, Adults and Dislocated Workers Programs Combined**

Reg State	PY 2004 Availability					Expenditures		Unexpended Balance 6/30/05*	Unexpended Carry-Out To PY 2005
	Unexpended Carry-In To PY 2004	New PY 2004 Funds			Total Available 7/1/04-6/30/05*	\$ 7/1/04 - 6/30/05*	as % of Total Available		
		PY 2004 7/1/2004 *	FY 2005 10/01/04	Total					
<b>Total</b>	<b>\$1,178,101,584</b>	<b>\$1,491,218,903</b>	<b>\$1,543,527,387</b>	<b>\$3,034,746,290</b>	<b>\$4,212,847,874</b>	<b>\$3,069,783,744</b>	<b>72.9%</b>	<b>\$1,143,064,130</b>	<b>\$1,134,614,140</b>
3 Alabama	27,625,075	22,599,538	22,545,075	45,144,613	72,769,688	61,675,224	84.8%	11,094,464	11,094,465
6 Alaska	4,829,711	4,789,477	5,140,268	9,929,745	14,759,456	11,111,867	75.3%	3,647,589	3,597,487
6 Arizona	21,071,247	25,957,556	26,421,603	52,379,159	73,450,406	47,918,264	65.2%	25,532,142	25,532,142
4 Arkansas	12,610,537	12,105,935	11,710,926	23,816,861	36,427,398	26,169,185	71.8%	10,258,213	10,258,211
6 California	131,893,228	219,813,939	234,782,391	454,596,330	586,489,558	453,184,936	77.3%	133,304,622	132,793,754
4 Colorado	12,289,961	17,407,284	18,936,911	36,344,195	48,634,156	32,259,403	66.3%	16,374,753	16,374,753
1 Connecticut	3,772,815	11,436,165	11,515,290	22,951,455	26,724,270	22,517,702	84.3%	4,206,568	4,206,568
2 Delaware	2,160,509	3,323,202	2,791,858	6,115,060	8,275,569	6,062,436	73.3%	2,213,133	2,213,133
2 District of Col	5,863,876	4,448,133	4,503,688	8,951,821	14,815,697	11,732,852	79.2%	3,082,845	3,082,845
3 Florida	44,579,367	65,841,389	71,081,492	136,922,881	181,502,248	118,537,859	65.3%	62,964,389	62,964,389
3 Georgia	22,272,652	31,402,523	31,981,464	63,383,987	85,656,639	61,912,051	72.3%	23,744,588	23,744,588
6 Hawaii	7,172,066	5,354,712	4,551,337	9,906,049	17,078,115	11,794,233	69.1%	5,283,882	5,283,882
6 Idaho	3,063,194	5,684,014	5,709,196	11,393,210	14,456,404	12,019,293	83.1%	2,437,111	2,437,111
5 Illinois	63,410,006	72,952,730	79,205,757	152,158,487	215,568,493	156,832,883	72.8%	58,735,610	57,715,102
5 Indiana	15,143,155	24,040,426	23,300,860	47,341,286	62,484,441	44,425,380	71.1%	18,059,061	18,059,061
5 Iowa	4,338,269	7,258,432	6,839,423	14,097,855	18,436,124	13,223,469	71.7%	5,212,655	5,197,114
5 Kansas	8,613,780	10,458,912	9,798,608	20,257,520	28,871,300	18,076,189	62.6%	10,795,111	10,795,109
3 Kentucky	29,059,931	21,134,052	20,961,062	42,095,114	71,155,045	43,881,572	61.7%	27,273,473	26,263,796
4 Louisiana	49,876,207	28,559,851	27,437,894	55,997,745	105,873,952	78,572,407	74.2%	27,301,545	27,301,545
1 Maine	1,425,362	4,296,560	4,103,579	8,400,139	9,825,501	8,070,967	82.1%	1,754,534	1,754,534
2 Maryland	10,441,147	15,903,762	16,322,104	32,225,866	42,667,013	33,546,703	78.6%	9,120,310	9,120,310
1 Massachusetts	8,315,576	26,102,613	27,438,114	53,540,727	61,856,303	48,887,502	79.0%	12,968,801	12,777,643
5 Michigan	33,158,409	57,737,508	62,462,247	120,199,755	153,358,164	117,693,079	76.7%	35,665,085	35,626,343
5 Minnesota	6,948,452	14,301,193	14,110,670	28,411,863	35,360,315	27,686,527	78.3%	7,673,788	7,659,320
3 Mississippi	19,207,206	18,503,694	18,521,632	37,025,326	56,232,532	43,337,663	77.1%	12,894,869	12,894,870
5 Missouri	11,227,007	24,692,473	25,256,840	49,949,313	61,176,320	53,450,630	87.4%	7,725,690	7,725,690
4 Montana	1,794,412	3,933,439	3,417,923	7,351,362	9,145,774	7,593,335	83.0%	1,552,439	1,552,439
5 Nebraska	5,843,201	4,030,633	3,797,214	7,827,847	13,671,048	8,503,856	62.2%	5,167,192	5,167,192
6 Nevada	8,313,516	8,142,404	8,912,388	17,054,792	25,368,308	21,671,602	85.4%	3,696,706	3,696,706
1 New Hampshire	2,925,399	3,725,984	3,818,007	7,543,991	10,469,390	6,823,983	65.2%	3,645,407	3,645,408
1 New Jersey	37,241,643	40,463,837	44,976,334	85,440,171	122,681,814	81,361,664	66.3%	41,320,150	41,320,151
4 New Mexico	12,827,743	9,322,187	8,765,992	18,088,179	30,915,922	16,735,738	54.1%	14,180,184	14,180,184
1 New York	102,926,569	107,783,341	115,573,221	223,356,562	326,283,131	234,058,325	71.7%	92,224,806	92,224,806
3 North Carolina	47,149,370	47,067,203	50,522,969	97,590,172	144,739,542	95,660,327	66.1%	49,079,215	49,079,215
4 North Dakota	852,731	3,231,451	2,558,106	5,789,557	6,642,288	5,505,684	82.9%	1,136,604	1,136,604
5 Ohio	67,861,034	58,625,779	59,944,425	118,570,204	186,431,238	110,618,006	59.3%	75,813,232	75,813,232
4 Oklahoma	8,619,411	13,547,126	13,072,334	26,619,460	35,238,871	23,949,723	68.0%	11,289,148	11,212,837
6 Oregon	16,997,688	26,533,536	29,040,929	55,574,465	72,572,153	55,017,369	75.8%	17,554,784	17,554,784
2 Pennsylvania	35,891,781	60,752,937	62,369,822	123,122,759	159,014,540	114,016,030	71.7%	44,998,510	44,975,874
1 Puerto Rico	60,339,034	55,744,079	51,402,091	107,146,170	167,485,204	116,989,089	69.9%	50,496,115	45,018,478
1 Rhode Island	1,075,845	4,634,365	4,433,601	9,067,966	10,143,811	8,277,170	81.6%	1,866,641	1,866,641
3 South Carolina	19,157,212	21,924,303	23,123,319	45,047,622	64,204,834	48,925,549	76.2%	15,279,285	15,279,285
4 South Dakota	2,566,106	3,197,935	2,472,721	5,670,656	8,236,762	6,407,697	77.8%	1,829,065	1,829,065
3 Tennessee	21,287,342	24,160,570	23,489,596	47,650,166	68,937,508	48,085,158	69.8%	20,852,350	20,852,350
4 Texas	85,659,732	128,103,772	131,873,762	259,977,534	345,637,266	264,721,404	76.6%	80,915,862	80,915,862
4 Utah	4,957,199	8,793,048	9,124,882	17,917,930	22,875,129	18,295,752	80.0%	4,579,377	4,579,377
1 Vermont	8,637	3,209,218	2,501,466	5,710,684	5,719,321	5,530,269	96.7%	189,052	189,052
2 Virginia	19,143,222	19,253,107	18,788,815	38,041,922	57,185,144	38,403,592	67.2%	18,781,552	18,781,552
6 Washington	34,315,066	41,298,971	44,732,281	86,031,252	120,346,318	88,914,728	73.9%	31,431,590	31,431,590
2 West Virginia	5,203,567	11,014,351	10,616,174	21,630,525	28,834,092	25,682,733	95.7%	1,151,359	1,151,359
5 Wisconsin	12,825,578	23,445,352	24,357,234	47,802,586	60,628,164	47,691,317	78.7%	12,936,847	12,914,506
4 Wyoming	1,949,801	3,173,902	2,411,492	5,585,394	7,535,195	5,763,368	76.5%	1,771,827	1,771,826

\* Includes PY 2004 Youth beginning 4/1/04

U. S. Department of Labor  
Employment and Training Administration  
**State Formula Spending for Program Year 2004 as of 6/30/05 Reports (as of 8/29/05)**  
**WIA Adult Activities Program**

NOTE: Summaries by program are estimates, due to a portion of the data being reported only for combined programs.

Reg	State	Unexpended Carry-In To PY 2004	PY 2004 Availability					Total Available 7/1/04-6/30/05	Expenditures		Unexpended Balance 6/30/05	Unexpended Carry-Out To PY 2005
			PY 2004		FY 2005		Total		\$ 7/1/04 - 6/30/05	as % of Total Available		
			07/01/04	Transfers	10/01/04	Transfers						
	<b>Total</b>	<b>\$361,651,777</b>	<b>\$185,978,924</b>	<b>\$15,936,231</b>	<b>\$702,844,260</b>	<b>\$50,818,397</b>	<b>\$955,577,812</b>	<b>\$1,317,229,589</b>	<b>\$981,427,257</b>	<b>74.5%</b>	<b>\$335,802,332</b>	<b>\$333,431,514</b>
3	Alabama	10,727,199	2,958,739	1,851,816	11,181,767	6,629,577	22,821,899	33,349,098	28,872,757	86.6%	4,476,341	4,476,341
6	Alaska	544,318	594,436	0	2,246,511	0	2,840,947	3,385,265	2,854,012	84.3%	531,253	526,559
6	Arizona	6,384,386	3,342,896	589,604	12,625,392	1,538,875	18,096,767	24,481,153	17,898,508	73.1%	6,582,645	6,582,645
4	Arkansas	4,638,590	1,592,758	94,665	6,019,402	0	7,706,825	12,345,415	9,549,706	77.4%	2,795,709	2,795,708
6	California	35,863,074	27,650,963	434,309	104,499,441	6,040,784	138,625,497	174,488,571	141,722,587	81.2%	32,765,984	32,546,940
4	Colorado	3,139,627	1,726,042	473,564	6,523,115	1,995,834	10,718,555	13,858,182	10,750,718	77.6%	3,107,464	3,107,464
1	Connecticut	842,857	1,343,374	0	5,076,924	240,000	6,660,298	7,503,155	6,532,033	87.1%	971,122	971,122
2	Delaware	1,035,514	466,059	0	1,761,346	0	2,227,405	3,262,919	1,929,495	59.1%	1,333,424	1,333,424
2	District of Columbia	1,459,453	569,542	166,957	2,152,431	543,965	3,432,895	4,892,348	3,891,413	79.5%	1,000,935	1,000,935
3	Florida	17,072,180	8,608,834	4,793,228	32,534,794	7,664,235	53,601,091	70,673,271	44,881,820	63.5%	25,791,451	25,791,451
3	Georgia	6,058,280	3,939,896	165,120	14,889,790	665,891	19,660,697	25,718,977	18,193,574	70.7%	7,525,403	7,525,403
6	Hawaii	2,716,723	780,871	(63,604)	2,951,094	(241,706)	3,426,655	6,143,378	4,463,274	72.7%	1,680,104	1,680,104
6	Idaho	1,089,496	654,078	0	2,471,912	0	3,125,990	4,215,486	3,452,076	81.9%	763,410	763,410
5	Illinois	16,241,563	8,664,118	1,660,572	32,743,729	0	43,068,419	59,309,982	42,806,658	72.2%	16,503,324	16,121,125
5	Indiana	4,538,629	2,848,224	0	10,764,104	206,091	13,818,419	18,357,048	13,508,909	73.6%	4,848,139	4,848,139
5	Iowa	1,075,633	737,281	0	2,786,358	(68,777)	3,454,862	4,530,495	3,409,989	75.3%	1,120,506	1,120,494
5	Kansas	2,184,863	1,224,320	0	4,626,992	0	5,851,312	8,036,175	5,215,079	64.9%	2,821,096	2,821,095
3	Kentucky	9,998,810	2,819,406	255,104	10,655,196	940,372	14,670,078	24,668,888	16,271,364	66.0%	8,397,524	8,152,080
4	Louisiana	16,846,846	3,852,590	699,243	14,559,839	2,063,117	21,174,789	38,021,635	28,591,675	75.2%	9,429,960	9,429,960
1	Maine	594,299	566,899	0	2,142,442	(51,213)	2,658,128	3,252,427	2,624,049	80.7%	628,378	628,378
2	Maryland	3,509,319	2,084,949	407,212	7,879,509	0	10,371,670	13,880,989	10,837,138	78.1%	3,043,851	3,043,851
1	Massachusetts	1,644,685	2,472,497	0	9,344,143	461,943	12,278,583	13,923,268	11,464,457	82.3%	2,458,811	2,368,577
5	Michigan	12,182,070	7,004,200	854,987	26,470,510	2,967,445	37,297,142	49,479,212	38,016,147	76.8%	11,463,065	11,463,065
5	Minnesota	2,293,333	1,608,463	0	6,078,760	346,673	8,033,896	10,327,229	7,860,965	76.1%	2,466,264	2,461,017
3	Mississippi	7,336,278	2,308,105	50,000	8,722,870	0	11,080,975	18,417,253	14,699,975	79.8%	3,717,279	3,717,279
5	Missouri	2,878,062	3,025,443	47,465	11,433,856	121,698	14,628,462	17,506,524	16,165,767	92.3%	1,340,757	1,340,757
4	Montana	700,397	598,054	0	2,260,185	0	2,858,239	3,558,636	2,911,035	81.8%	647,601	647,601
5	Nebraska	1,873,366	466,059	0	1,761,346	120,905	2,348,310	4,221,676	2,791,595	66.1%	1,430,081	1,430,081
6	Nevada	3,119,074	1,039,555	0	3,928,720	1,584,856	6,553,131	9,672,205	7,673,729	79.3%	1,998,476	1,998,476
1	New Hampshire	821,618	466,059	0	1,761,346	(200,000)	2,027,405	2,849,023	1,654,797	58.1%	1,194,226	1,194,227
1	New Jersey	12,349,625	5,091,588	(588,707)	19,242,300	0	23,745,181	36,094,806	21,654,496	60.0%	14,440,310	14,440,310
4	New Mexico	6,367,578	1,237,720	0	4,672,276	300,000	6,209,996	12,577,574	6,532,109	51.9%	6,045,465	6,045,465
1	New York	30,555,145	13,802,414	2,344,837	52,162,550	0	68,309,801	98,864,946	76,707,069	77.6%	22,157,877	22,157,877
3	North Carolina	10,690,188	5,653,372	(21,287)	21,365,416	956,513	27,954,014	38,644,202	27,705,715	71.7%	10,938,487	10,938,487
4	North Dakota	406,126	466,059	0	1,761,346	0	2,227,405	2,633,531	2,178,666	82.7%	454,865	454,865
5	Ohio	23,813,852	7,253,144	601,712	27,411,325	2,357,477	37,623,658	61,437,510	37,915,890	61.7%	23,521,620	23,521,620
6	Oklahoma	2,615,479	1,762,450	16,451	6,660,710	429,186	8,868,797	11,484,276	8,258,322	71.9%	3,225,954	3,224,744
6	Oregon	4,589,199	3,181,094	64,430	12,022,100	0	15,267,624	19,856,823	15,906,600	80.1%	3,950,223	3,950,223
2	Pennsylvania	9,437,013	7,403,834	143,490	27,980,818	793,238	36,321,380	45,758,393	34,493,746	75.4%	11,264,647	11,253,939
1	Puerto Rico	17,447,239	7,834,148	0	29,607,078	0	37,441,226	54,888,465	40,099,998	73.1%	14,788,467	13,376,442
1	Rhode Island	571,581	521,584	0	1,971,187	0	2,492,771	3,064,352	2,378,461	77.6%	685,891	685,891
3	South Carolina	5,972,555	2,705,841	127,356	10,226,006	420,845	13,480,048	19,452,603	15,457,315	79.5%	3,995,288	3,995,288
4	South Dakota	761,527	466,059	0	1,761,346	0	2,227,405	2,988,932	2,391,419	80.0%	597,513	597,513
3	Tennessee	7,506,471	3,247,361	174,611	12,272,534	559,698	16,254,204	23,760,675	16,738,458	70.4%	7,022,217	7,022,217
4	Texas	26,947,705	15,993,524	280,952	60,443,265	10,867,809	87,585,550	114,533,255	85,682,670	74.8%	28,850,585	28,850,585
4	Utah	1,516,667	954,774	273,685	3,608,315	735,055	5,571,829	7,088,496	5,157,576	72.8%	1,930,920	1,930,920
1	Vermont	0	466,059	0	1,761,346	(156,571)	2,070,834	2,070,834	1,937,880	93.6%	132,954	132,954
2	Virginia	4,910,591	2,489,990	0	9,410,254	(69,427)	11,830,817	16,741,408	11,147,388	66.6%	5,594,020	5,594,020
6	Washington	8,562,864	4,839,139	0	18,288,237	194,000	23,321,376	31,884,240	23,551,565	73.9%	8,332,675	8,332,675
2	West Virginia	1,897,695	1,514,260	0	5,722,745	(239,463)	6,997,542	8,895,237	8,341,496	93.8%	553,741	553,741
5	Wisconsin	4,619,523	2,613,741	0	9,877,936	0	12,491,677	17,111,200	13,433,705	78.5%	3,677,495	3,677,495
4	Wyoming	702,612	466,059	38,459	1,761,346	99,472	2,365,336	3,067,948	2,261,412	73.7%	806,536	806,535

U. S. Department of Labor  
Employment and Training Administration  
**State Formula Spending for Program Year 2004 as of 6/30/05 Reports (as of 8/29/05)**  
**WIA Youth Activities Program**

NOTE: Summaries by program are estimates, due to a portion of the data being reported only for combined programs.

Reg	State	PY 2004 Availability			Expenditures		Unexpended Balance 6/30/05	Unexpended Carry-Out To PY 2005
		Unexpended Carry-In To PY 2004	New PY 2004 Funds 04/01/04	Total Available 4/1/04-6/30/05	\$ 4/1/04 - 6/30/05	as % of Total Available		
	<b>Total</b>	<b>\$275,997,441</b>	<b>\$975,255,164</b>	<b>\$1,251,252,605</b>	<b>\$1,004,075,138</b>	<b>80.2%</b>	<b>\$247,177,467</b>	<b>\$246,004,133</b>
3	Alabama	4,469,066	15,180,497	19,649,563	17,129,483	87.2%	2,520,080	2,520,080
6	Alaska	1,090,008	3,059,190	4,149,198	3,527,432	85.0%	621,766	595,850
6	Arizona	4,763,046	17,198,340	21,961,386	15,259,495	69.5%	6,701,891	6,701,891
4	Arkansas	3,437,662	8,279,152	11,716,814	8,743,249	74.6%	2,973,565	2,973,565
6	California	38,112,189	141,024,592	179,136,781	145,332,311	81.1%	33,804,470	33,794,572
4	Colorado	3,365,420	10,808,605	14,174,025	10,101,378	71.3%	4,072,647	4,072,647
1	Connecticut	634,844	7,565,617	8,200,461	7,343,777	89.6%	856,684	856,684
2	Delaware	541,448	2,452,649	2,994,097	2,749,102	91.8%	244,995	244,995
2	District of Columbia	1,918,658	2,955,680	4,874,338	3,734,236	76.6%	1,140,102	1,140,102
3	Florida	7,388,908	42,102,288	49,491,196	43,790,718	88.5%	5,700,478	5,700,478
3	Georgia	5,388,674	20,753,840	26,142,514	20,877,709	79.9%	5,264,805	5,264,805
6	Hawaii	2,248,350	3,945,717	6,194,067	3,919,375	63.3%	2,274,692	2,274,692
6	Idaho	1,046,621	3,759,244	4,805,865	4,068,790	84.7%	737,075	737,075
5	Illinois	11,398,028	46,051,436	57,449,464	45,628,183	79.4%	11,821,281	11,821,281
5	Indiana	3,756,278	16,271,301	20,027,579	15,383,152	76.8%	4,644,427	4,644,427
5	Iowa	956,447	4,930,250	5,886,697	4,318,187	73.4%	1,568,510	1,568,499
5	Kansas	3,468,635	7,204,640	10,673,275	7,919,692	74.2%	2,753,583	2,753,583
3	Kentucky	7,453,341	14,269,410	21,722,751	14,018,868	64.5%	7,703,883	7,184,296
4	Louisiana	12,538,387	19,652,395	32,190,782	25,235,960	78.4%	6,954,822	6,954,822
1	Maine	215,674	2,959,879	3,175,553	2,758,772	86.9%	416,781	416,781
2	Maryland	2,115,444	10,504,944	12,620,388	10,407,164	82.5%	2,213,224	2,213,224
1	Massachusetts	1,986,062	16,527,910	18,513,972	16,035,764	86.6%	2,478,208	2,478,207
5	Michigan	4,706,053	36,605,909	41,311,962	36,467,505	88.3%	4,844,457	4,844,457
3	Minnesota	589,279	9,540,062	10,129,341	9,826,739	97.0%	302,602	302,602
3	Mississippi	2,800,761	12,349,400	15,150,161	12,413,207	81.9%	2,736,954	2,736,954
5	Missouri	3,554,079	16,241,262	19,795,341	17,762,142	89.7%	2,033,199	2,033,199
4	Montana	632,565	2,880,952	3,513,517	2,956,289	84.1%	557,228	557,228
5	Nebraska	1,506,520	2,765,459	4,271,979	2,993,330	70.1%	1,278,649	1,278,649
6	Nevada	1,776,941	5,146,670	6,923,611	6,770,400	97.8%	153,211	153,211
1	New Hampshire	1,509,839	2,452,649	3,962,488	2,658,338	67.1%	1,304,150	1,304,150
1	New Jersey	7,399,836	25,271,181	32,671,017	25,739,706	78.8%	6,931,311	6,931,311
4	New Mexico	3,812,774	6,476,997	10,289,771	7,549,738	73.4%	2,740,033	2,740,033
1	New York	24,066,248	69,091,107	93,157,355	78,193,247	83.9%	14,964,108	14,964,108
3	North Carolina	11,986,300	29,968,970	41,955,270	30,776,265	73.4%	11,179,005	11,179,006
4	North Dakota	229,026	2,452,649	2,681,675	2,277,541	84.9%	404,134	404,134
5	Ohio	20,530,070	38,602,812	59,132,882	36,645,865	62.0%	22,487,017	22,487,017
4	Oklahoma	2,821,151	9,267,999	12,089,150	9,024,627	74.7%	3,064,523	2,990,286
6	Oregon	3,630,860	16,672,248	20,303,108	16,279,210	80.2%	4,023,898	4,023,898
2	Pennsylvania	7,269,150	39,850,805	47,119,955	37,160,005	78.9%	9,959,950	9,959,950
1	Puerto Rico	13,765,295	39,354,999	53,120,294	39,982,721	75.3%	13,137,573	12,616,229
1	Rhode Island	227,437	3,146,239	3,373,676	3,072,326	91.1%	301,350	301,350
3	South Carolina	4,390,137	14,156,036	18,546,173	16,316,042	88.0%	2,230,131	2,230,131
4	South Dakota	1,293,710	2,452,649	3,746,359	3,008,763	80.3%	737,596	737,596
3	Tennessee	4,796,861	16,510,312	21,307,173	17,569,531	82.5%	3,737,642	3,737,642
4	Texas	19,533,431	84,072,503	103,605,934	86,361,954	83.4%	17,243,980	17,243,980
4	Utah	941,878	5,672,923	6,614,801	5,218,545	78.9%	1,396,256	1,396,256
1	Vermont	8,637	2,452,649	2,461,286	2,458,542	99.9%	2,744	2,744
2	Virginia	4,566,108	13,081,864	17,647,972	14,254,724	80.8%	3,393,248	3,393,248
6	Washington	6,383,207	26,080,073	32,463,280	27,573,990	84.9%	4,889,290	4,889,290
2	West Virginia	0	7,579,333	7,579,333	7,240,816	95.5%	338,517	338,517
5	Wisconsin	2,223,716	15,148,228	17,371,944	14,603,237	84.1%	2,768,707	2,746,366
4	Wyoming	752,382	2,452,649	3,205,031	2,636,996	82.3%	568,035	568,035

U. S. Department of Labor  
Employment and Training Administration  
**State Formula Spending for Program Year 2004 as of 6/30/05 Reports (as of 8/29/05)**  
**WIA Dislocated Workers Program**

NOTE: Summaries by program are estimates, due to a portion of the data being reported only for combined programs.

Reg	State	PY 2004 Availability					Total Available 7/1/04-6/30/05	Expenditures		Unexpended Balance 6/30/05	Unexpended Carry-Out to PY 2005	
		Unexpended Carry-In To PY 2004	New PY 2004 Funds					Total	\$ 7/1/04 - 6/30/05			as % of Total Available
			PY 2004		FY 2005							
	<b>Total</b>	<b>\$540,452,366</b>	<b>\$329,984,815</b>	<b>(\$15,936,231)</b>	<b>\$840,683,127</b>	<b>(\$50,818,397)</b>	<b>\$1,103,913,314</b>	<b>\$1,644,365,680</b>	<b>\$1,084,281,349</b>	<b>65.9%</b>	<b>\$560,084,331</b>	<b>\$555,178,493</b>
3	Alabama	12,428,810	4,460,302	(1,851,816)	11,363,308	(6,629,577)	7,342,217	19,771,027	15,672,984	79.3%	4,098,043	4,098,044
6	Alaska	3,195,385	1,135,851	0	2,893,757	0	4,029,608	7,224,993	4,730,423	65.5%	2,494,570	2,475,078
6	Arizona	9,923,815	5,416,320	(589,604)	13,796,211	(1,538,875)	17,084,052	27,007,867	14,760,261	54.7%	12,247,606	12,247,606
4	Arkansas	4,534,285	2,234,025	(94,665)	5,991,524	0	7,830,884	12,365,169	7,876,230	63.7%	4,488,939	4,488,938
6	California	57,917,965	51,138,384	(434,309)	130,282,950	(6,040,784)	174,946,241	232,864,206	166,130,038	71.3%	66,734,168	66,452,242
4	Colorado	5,784,914	4,872,637	(473,564)	12,413,796	(1,995,834)	14,817,035	20,601,949	11,407,307	55.4%	9,194,642	9,194,642
1	Connecticut	2,295,114	2,527,174	0	6,438,366	(240,000)	8,725,540	11,020,654	8,641,892	78.4%	2,378,762	2,378,762
2	Delaware	583,547	404,494	0	1,030,512	0	1,435,006	2,018,553	1,383,839	68.6%	634,714	634,714
2	District of Columbia	2,485,765	922,911	(166,957)	2,351,257	(543,965)	2,563,246	5,049,011	4,107,203	81.3%	941,808	941,808
3	Florida	20,118,279	15,130,267	(4,793,228)	38,546,698	(7,664,235)	41,219,502	61,337,781	29,865,321	48.7%	31,472,460	31,472,460
3	Georgia	10,825,698	6,708,787	(165,120)	17,091,674	(665,891)	22,969,450	33,795,148	22,407,768	67.6%	10,954,642	10,954,380
6	Hawaii	2,206,993	628,124	63,604	1,600,243	241,706	2,533,677	4,740,670	3,411,584	72.0%	1,329,086	1,329,086
6	Idaho	927,077	1,270,692	0	3,237,284	0	4,507,976	5,435,053	4,498,427	82.2%	936,626	936,626
5	Illinois	35,170,415	18,237,176	(1,660,572)	46,462,028	0	63,038,632	98,809,047	68,398,042	69.2%	30,411,005	29,772,696
5	Indiana	6,848,248	4,920,901	0	12,536,756	(206,091)	17,251,566	24,099,814	15,533,319	64.5%	8,566,495	8,566,495
5	Iowa	2,306,189	1,590,901	0	4,053,065	68,777	5,712,743	8,018,932	5,495,293	68.5%	2,523,639	2,508,121
5	Kansas	2,960,282	2,029,952	0	5,171,616	0	7,201,568	10,161,850	4,941,418	48.6%	5,220,432	5,220,431
3	Kentucky	11,607,780	4,045,236	(255,104)	10,305,866	(940,372)	13,155,626	24,763,406	13,591,340	54.9%	11,172,066	10,927,420
4	Louisiana	20,490,974	5,054,866	(699,243)	12,878,055	(2,063,117)	15,170,561	35,661,535	24,744,772	69.4%	10,916,763	10,916,763
1	Maine	615,389	769,782	0	1,961,137	51,213	2,782,132	3,397,521	2,688,146	79.1%	709,375	709,375
2	Maryland	4,816,384	3,313,869	(407,212)	8,442,595	0	11,349,252	16,165,636	12,302,401	76.1%	3,863,235	3,863,235
1	Massachusetts	4,684,829	7,102,206	0	18,093,971	(461,943)	24,734,234	29,419,063	21,387,281	72.7%	8,031,782	7,930,859
6	Michigan	16,270,286	14,127,399	(854,987)	35,991,737	(2,967,445)	46,296,704	62,566,990	43,209,427	69.1%	19,357,563	19,318,821
5	Minnesota	4,065,840	3,152,668	0	8,031,910	(346,673)	10,837,905	14,903,745	9,998,823	67.1%	4,904,922	4,895,701
3	Mississippi	9,070,167	3,846,189	(50,000)	9,798,762	0	13,594,951	22,665,118	16,224,481	71.6%	6,440,637	6,440,637
5	Missouri	4,794,866	5,425,768	(47,465)	12,822,984	(121,698)	19,079,589	23,874,455	19,522,721	81.8%	4,351,734	4,351,734
4	Montana	461,450	454,433	0	1,157,738	0	1,612,171	2,073,621	1,726,011	83.2%	347,610	347,610
6	Nebraska	2,463,315	799,115	0	2,035,868	(120,905)	2,714,078	5,177,393	2,718,931	52.5%	2,458,462	2,458,462
6	Nevada	3,417,501	1,956,179	0	4,983,668	(1,584,856)	5,354,991	8,772,492	7,227,473	82.4%	1,545,019	1,545,019
1	New Hampshire	593,942	807,276	0	2,056,661	200,000	3,063,937	3,657,879	2,510,848	68.6%	1,147,031	1,147,031
1	New Jersey	17,492,182	10,101,068	588,707	25,734,034	0	36,423,809	53,915,991	33,967,462	63.0%	19,948,529	19,948,530
4	New Mexico	2,647,391	1,607,470	0	4,093,716	(300,000)	5,401,186	8,048,577	2,653,891	33.0%	5,394,686	5,394,686
1	New York	48,305,176	24,889,820	(2,344,837)	63,410,671	0	85,955,654	134,260,830	79,158,009	59.0%	55,102,821	55,102,821
3	North Carolina	24,472,882	11,444,861	21,287	29,157,553	(956,513)	39,667,188	64,140,070	37,178,347	58.0%	26,961,723	26,961,722
4	North Dakota	217,579	312,743	0	796,760	0	1,109,503	1,327,082	1,049,477	79.1%	277,605	277,605
5	Ohio	23,517,112	12,769,823	(601,712)	32,533,100	(2,357,477)	42,343,734	65,860,846	36,066,251	54.7%	29,804,595	29,804,595
4	Oklahoma	3,182,781	2,516,677	(16,451)	6,411,624	(429,186)	8,482,664	11,665,445	6,666,774	57.1%	4,998,671	4,997,807
6	Oregon	8,777,629	6,680,194	(64,430)	17,018,829	0	23,634,593	32,412,222	22,831,559	70.4%	9,580,663	9,580,663
2	Pennsylvania	19,185,618	13,498,298	(143,490)	34,389,004	(793,238)	46,950,574	66,136,192	42,362,279	64.1%	23,773,913	23,761,985
1	Puerto Rico	29,126,500	8,554,932	0	21,795,013	0	30,349,945	59,476,445	36,906,370	62.1%	22,570,075	19,025,807
1	Rhode Island	276,827	966,542	0	2,462,414	0	3,428,956	3,705,783	2,826,383	76.3%	879,400	879,400
3	South Carolina	8,794,520	5,062,426	(127,356)	12,897,313	(420,845)	17,411,538	26,206,058	17,152,192	65.5%	9,053,866	9,053,866
4	South Dakota	510,869	279,227	0	711,375	0	990,602	1,501,471	1,007,515	67.1%	493,956	493,956
3	Tennessee	8,984,010	4,402,897	(174,611)	11,217,062	(559,698)	14,885,650	23,869,660	13,777,169	57.7%	10,092,491	10,092,491
4	Texas	39,178,596	28,037,745	(280,952)	71,430,497	(10,867,809)	88,319,481	127,498,077	92,676,780	72.7%	34,821,297	34,821,297
4	Utah	2,498,654	2,165,351	(273,685)	5,516,567	(735,055)	6,673,178	9,171,832	7,919,631	86.3%	1,252,201	1,252,201
1	Vermont	0	290,510	0	740,120	156,571	1,187,201	1,187,201	1,133,847	95.5%	53,354	53,354
2	Virginia	9,666,523	3,681,253	0	9,378,561	69,427	13,129,241	22,795,764	13,001,480	57.0%	9,794,284	9,794,284
6	Washington	19,368,995	10,379,759	0	26,444,044	(194,000)	36,629,803	55,998,798	37,789,173	67.5%	18,209,625	18,209,625
2	West Virginia	3,305,872	1,920,758	0	4,893,429	239,463	7,053,560	10,359,522	10,100,421	97.5%	259,101	259,101
5	Wisconsin	5,982,339	5,683,383	0	14,479,298	0	20,162,681	26,145,020	19,654,375	75.2%	6,490,645	6,490,645
4	Wyoming	494,807	255,194	(38,459)	650,146	(99,472)	767,409	1,262,216	864,960	68.5%	397,256	397,256

Employment and Training Administration  
U. S. Department of Labor  
**State WIA Formula Spending: Net Outlays by Quarter**  
**By Program and Fund Year, as of 6/30/05**

(No adjustment for negative net outlays)

Program	Year	6/30/03	9/30/03	12/31/03	3/31/04	6/30/04	9/30/04	12/31/04	3/31/05	6/30/05	
Adults	PY 1998	-	-	-	-	-	-	-	-	-	
	PY 1999	-	-	-	-	-	-	-	-	-	
	PY 2000	1,727,233	-	-	-	-	-	-	-	-	
	FY 2001	21,909,083	-	-	-	-	-	-	-	-	
	PY 2001	2,732,981	2,110,349	236,171	2,349,441	1,917,786	-	-	-	-	
	FY 2002	51,750,676	14,516,849	12,860,158	8,072,520	14,478,081	-	-	-	-	
	PY 2002	20,904,407	9,987,606	5,785,118	3,862,538	6,493,218	2,745,494	984,661	(4,483,056)	2,944,600	
	FY 2003	206,002,017	107,013,067	63,873,921	42,309,711	51,352,454	4,082,752	16,630,384	10,877,294	9,540,413	
	PY 2003	-	71,856,257	65,334,177	24,135,937	13,441,982	7,121,489	4,003,951	743,868	4,067,253	
	FY 2004	-	-	93,243,877	155,934,159	201,536,637	116,407,839	66,140,955	36,346,985	32,589,671	
	PY 2004	-	-	-	-	-	78,005,300	68,629,978	24,765,029	13,538,875	
	FY 2005	-	-	-	-	-	-	100,810,717	171,395,420	213,537,385	
	All Years		305,026,397	205,484,128	241,333,422	236,664,306	289,220,158	208,362,874	257,200,646	239,645,540	276,218,197
	Youth *	PY 1998	-	-	-	-	-	-	-	-	-
PY 1999		-	-	-	-	-	-	-	-	-	
PY 2000		7,598,321	-	-	-	-	-	-	-	-	
FY 2001		-	-	-	-	-	-	-	-	-	
PY 2001		49,503,519	13,936,415	5,839,696	8,612,880	9,155,726	-	-	-	-	
FY 2002		-	-	-	-	-	-	-	-	-	
PY 2002		242,275,544	155,262,059	76,437,626	52,408,753	48,568,575	8,213,018	4,040,530	4,953,625	2,797,261	
FY 2003		-	-	-	-	-	-	-	-	-	
PY 2003		10,023,221	149,326,052	151,585,078	184,497,584	224,083,265	121,909,879	54,494,513	31,780,119	27,803,728	
FY 2004		-	-	-	-	-	-	-	-	-	
PY 2004		-	-	-	-	9,551,744	148,518,674	176,344,904	187,857,244	225,809,899	
FY 2005		-	-	-	-	-	-	-	-	-	
All Years			309,400,605	318,524,526	233,862,400	245,519,217	291,359,310	278,641,571	234,879,947	224,590,988	256,410,888
Dislocated Workers		PY 1998	-	-	-	-	-	-	-	-	-
	PY 1999	-	-	-	-	-	-	-	-	-	
	PY 2000	7,092,999	-	-	-	-	-	-	-	-	
	FY 2001	55,238,764	-	-	-	-	-	-	-	-	
	PY 2001	5,612,596	2,236,865	2,953,570	1,222,203	2,571,773	-	-	-	-	
	FY 2002	77,130,608	28,890,268	28,066,130	21,460,801	38,758,744	-	-	-	-	
	PY 2002	41,584,392	20,153,878	8,999,326	8,829,994	11,344,246	2,784,168	4,260,338	9,102,464	768,585	
	FY 2003	202,272,461	121,046,095	73,723,903	62,693,215	69,735,863	5,310,335	27,404,681	25,729,755	18,879,494	
	PY 2003	-	74,763,055	98,696,114	50,371,249	27,090,679	12,289,715	8,993,496	7,766,055	4,795,954	
	FY 2004	-	-	61,188,760	142,606,309	201,951,900	119,307,351	80,540,778	53,468,105	46,824,216	
	PY 2004	-	-	-	-	-	73,788,356	104,502,202	54,087,754	34,959,397	
	FY 2005	-	-	-	-	-	-	49,109,809	133,887,281	205,721,060	
	All Years		388,931,820	247,090,161	273,627,803	287,183,771	351,453,205	213,479,925	274,811,304	284,041,414	311,948,706
	All Programs	PY 1998	-	-	-	-	-	-	-	-	-
PY 1999		-	-	-	-	-	-	-	-	-	
PY 2000		16,418,553	-	-	-	-	-	-	-	-	
FY 2001		77,147,847	-	-	-	-	-	-	-	-	
PY 2001		57,849,096	18,283,629	9,029,437	12,184,524	13,645,285	-	-	-	-	
FY 2002		128,881,284	43,407,117	40,926,288	29,533,321	53,236,825	-	-	-	-	
PY 2002		304,764,343	185,403,543	91,222,070	65,101,285	66,406,039	13,742,680	9,285,529	9,573,033	6,510,446	
FY 2003		408,274,478	228,059,162	137,597,824	105,002,926	121,088,317	9,393,087	44,035,065	36,607,049	28,419,907	
PY 2003		10,023,221	295,945,364	315,615,369	259,004,770	264,615,926	141,321,083	67,491,960	40,290,042	36,666,935	
FY 2004		-	-	154,432,637	298,540,468	403,488,537	235,715,190	146,681,733	89,815,090	79,413,887	
PY 2004		-	-	-	-	9,551,744	300,312,330	349,477,084	266,710,027	274,308,171	
FY 2005		-	-	-	-	-	-	149,920,526	305,282,701	419,258,445	
All Years			1,003,358,822	771,098,815	748,823,625	769,367,294	932,032,673	700,484,370	766,891,897	748,277,942	844,577,791

\* For program year spending analysis purposes elsewhere, the first quarter of spending for a fund year will be combined with the subsequent 9/30 quarter.



U. S. Department of Labor  
Employment and Training Administration  
State WIA Formula Spending for Program Year 2004 per 6/30/05 Reports as of 8/29/05  
State/Local Level Expenditure Rates

Reg State	Total	State	Local
<b>NATIONAL</b>	<b>72.9%</b>	<b>54.2%</b>	<b>79.9%</b>
3 Alabama	84.8%	73.5%	88.4%
6 Alaska	75.3%	76.9%	75.0%
6 Arizona	65.2%	48.9%	71.1%
4 Arkansas	71.8%	50.3%	80.4%
6 California	77.3%	60.9%	83.8%
4 Colorado	66.3%	42.1%	75.0%
1 Connecticut	84.3%	76.7%	87.3%
2 Delaware	73.3%	64.6%	74.9%
2 District of Columbia	79.2%	68.1%	81.3%
3 Florida	65.3%	25.3%	78.0%
3 Georgia	72.3%	60.1%	76.7%
6 Hawaii	69.1%	66.9%	69.5%
6 Idaho	83.1%	66.4%	89.5%
5 Illinois	72.8%	54.6%	83.0%
5 Indiana	71.1%	44.9%	81.7%
5 Iowa	71.7%	50.4%	80.1%
5 Kansas	62.6%	46.2%	68.3%
3 Kentucky	61.7%	42.3%	69.9%
4 Louisiana	74.2%	61.9%	78.2%
1 Maine	82.1%	67.4%	87.5%
2 Maryland	78.6%	67.7%	82.6%
1 Massachusetts	79.0%	63.3%	85.7%
5 Michigan	76.7%	52.8%	82.7%
5 Minnesota	78.3%	53.3%	91.2%
3 Mississippi	77.1%	72.3%	78.3%
5 Missouri	87.4%	85.7%	88.0%
4 Montana	83.0%	82.9%	83.1%
5 Nebraska	62.2%	36.9%	72.1%
6 Nevada	85.4%	69.1%	89.6%
1 New Hampshire	65.2%	52.9%	68.6%
1 New Jersey	66.3%	61.7%	67.9%
4 New Mexico	54.1%	48.4%	57.0%
1 New York	71.7%	45.8%	84.7%
3 North Carolina	66.1%	54.5%	69.0%
4 North Dakota	82.9%	55.5%	90.7%
5 Ohio	59.3%	55.3%	60.7%
4 Oklahoma	68.0%	50.5%	74.0%
6 Oregon	75.8%	54.7%	84.0%
2 Pennsylvania	71.7%	50.6%	81.1%
1 Puerto Rico	69.9%	46.7%	83.5%
1 Rhode Island	81.6%	82.1%	81.5%
3 South Carolina	76.2%	53.1%	86.6%
4 South Dakota	77.8%	64.1%	81.5%
3 Tennessee	69.8%	52.6%	75.8%
4 Texas	76.6%	47.2%	85.9%
4 Utah	80.0%	72.5%	81.4%
1 Vermont	96.7%	82.5%	99.3%
2 Virginia	67.2%	50.5%	74.1%
6 Washington	73.9%	54.4%	79.7%
2 West Virginia	95.7%	100.0%	94.3%
5 Wisconsin	78.7%	74.8%	80.2%
4 Wyoming	76.5%	52.0%	81.4%

U. S. Department of Labor  
Employment and Training Administration  
**State WIA Formula Spending for Program Year 2004 per 6/30/05 Reports as of 8/29/05**  
**State Level Spending**

Reg	State	PY 2004 Availability				Expenditures		Unexpended Balance 6/30/05	Unexpended Carry-Out To PY 2005	
		Unexpended Carry-In To PY 2004	New PY 2004 Funds			Total Available	\$ 7/1/04 - 6/30/05			as % of Total Available
			PY 2004	FY 2005	Total					
	<b>Total</b>	<b>\$497,278,106</b>	<b>\$282,500,721</b>	<b>\$373,638,911</b>	<b>\$656,139,632</b>	<b>\$1,153,417,738</b>	<b>\$625,080,278</b>	<b>54.2%</b>	<b>\$528,337,460</b>	<b>\$520,001,807</b>
3	Alabama	11,004,651	3,389,931	3,381,761	6,771,692	17,776,343	13,062,480	73.5%	4,713,863	4,713,863
6	Alaska	463,741	797,932	973,604	1,771,536	2,235,277	1,719,168	76.9%	516,109	466,007
6	Arizona	9,414,102	4,599,329	5,365,690	9,965,019	19,379,121	9,481,509	48.9%	9,897,612	9,897,612
4	Arkansas	4,822,021	2,374,394	3,110,719	5,485,113	10,307,134	5,179,578	50.3%	5,127,556	5,127,554
6	California	52,829,909	45,756,685	67,788,096	113,544,781	166,374,690	101,276,105	60.9%	65,098,585	64,587,717
4	Colorado	4,434,221	2,859,251	5,522,048	8,381,299	12,815,520	5,395,293	42.1%	7,420,227	7,420,227
1	Connecticut	2,054,888	2,347,218	3,336,886	5,684,104	7,738,992	5,935,317	76.7%	1,803,675	1,803,675
2	Delaware	420,406	399,604	526,405	926,009	1,346,415	869,160	64.6%	477,255	477,254
2	District of Columbia	967,688	697,220	675,553	1,372,773	2,340,461	1,594,640	68.1%	745,821	745,822
3	Florida	20,730,655	10,578,775	12,378,897	22,957,672	43,688,327	11,049,684	25.3%	32,638,643	32,638,643
3	Georgia	7,660,907	6,387,575	8,885,369	15,272,944	22,933,851	13,782,175	60.1%	9,151,676	9,151,675
6	Hawaii	1,477,148	822,049	699,896	1,521,945	2,999,093	2,006,721	66.9%	992,372	992,372
6	Idaho	1,176,971	1,170,274	1,638,318	2,808,592	3,985,563	2,645,054	66.4%	1,340,509	1,340,509
5	Illinois	39,412,689	15,792,368	22,756,936	38,549,304	77,961,993	42,603,507	54.6%	35,358,486	34,337,978
5	Indiana	6,752,578	4,836,890	6,494,268	11,331,158	18,083,736	8,128,253	44.9%	9,955,483	9,955,484
5	Iowa	2,279,851	1,327,399	1,591,892	2,919,291	5,199,142	2,618,355	50.4%	2,580,787	2,580,787
5	Kansas	2,617,226	2,076,324	2,705,953	4,782,277	7,399,503	3,418,053	46.2%	3,981,450	3,981,447
3	Kentucky	11,196,157	4,181,417	5,720,625	9,902,042	21,098,199	8,915,524	42.3%	12,182,675	11,172,998
4	Louisiana	16,100,485	4,789,464	5,225,793	10,015,257	26,115,742	16,164,121	61.9%	9,951,621	9,951,621
1	Maine	675,364	836,930	1,105,821	1,942,751	2,618,115	1,764,999	67.4%	853,116	853,116
2	Maryland	4,652,786	2,882,644	3,714,705	6,597,349	11,250,135	7,611,935	67.7%	3,638,200	3,638,199
1	Massachusetts	4,024,592	5,690,945	8,639,210	14,330,155	18,354,747	11,624,831	63.3%	6,729,916	6,538,758
5	Michigan	11,550,712	8,969,354	10,162,210	19,131,564	30,682,276	16,213,278	52.8%	14,468,998	14,430,256
5	Minnesota	5,045,195	2,933,347	4,044,045	6,977,392	12,022,587	6,407,664	53.3%	5,614,923	5,600,456
3	Mississippi	4,464,867	3,492,843	3,239,984	6,732,827	11,197,694	8,097,451	72.3%	3,100,243	3,100,245
5	Missouri	4,076,402	5,060,312	7,099,009	12,159,321	16,235,723	13,912,172	85.7%	2,323,551	2,323,551
4	Montana	546,899	703,625	802,122	1,505,747	2,052,646	1,702,073	82.9%	350,573	350,573
5	Nebraska	2,368,992	684,505	773,167	1,457,672	3,826,664	1,410,581	36.9%	2,416,083	2,416,082
6	Nevada	2,263,776	1,296,362	1,561,858	2,858,220	5,121,996	3,538,612	69.1%	1,583,384	1,583,384
1	New Hampshire	869,913	639,171	779,118	1,418,289	2,288,202	1,211,096	52.9%	1,077,106	1,077,107
1	New Jersey	10,109,977	8,245,421	12,923,536	21,168,957	31,278,934	19,306,314	61.7%	11,972,620	11,972,621
4	New Mexico	6,209,398	1,800,193	2,280,954	4,081,147	10,290,545	4,984,368	48.4%	5,306,177	5,306,177
1	New York	52,837,092	22,389,957	33,186,079	55,576,036	108,413,128	49,619,617	45.8%	58,793,511	58,793,511
3	North Carolina	14,435,710	7,060,080	7,232,117	14,292,197	28,727,907	15,643,971	54.5%	13,083,936	13,083,935
4	North Dakota	482,557	519,717	473,716	993,433	1,475,990	818,817	55.5%	657,173	657,174
5	Ohio	19,578,617	11,986,323	16,779,620	28,765,943	48,344,560	26,758,457	55.3%	21,586,103	21,586,103
4	Oklahoma	2,764,998	2,661,238	3,563,755	6,224,993	8,989,991	4,536,209	50.5%	4,453,782	4,453,783
6	Oregon	7,608,350	5,215,843	7,530,034	12,745,877	20,354,227	11,128,897	54.7%	9,225,330	9,225,330
2	Pennsylvania	18,914,727	12,487,515	17,594,521	30,082,036	48,996,763	24,780,710	50.6%	24,216,053	24,193,417
1	Puerto Rico	38,823,972	10,500,345	12,850,658	23,351,003	62,174,975	29,020,639	46.7%	33,154,336	27,676,845
1	Rhode Island	0	936,791	1,280,644	2,217,435	2,217,435	1,820,136	82.1%	397,299	397,299
3	South Carolina	8,781,140	4,554,253	6,560,320	11,114,573	19,895,713	10,560,266	53.1%	9,335,447	9,335,447
4	South Dakota	854,412	492,190	408,407	900,597	1,755,009	1,125,450	64.1%	629,559	629,559
3	Tennessee	7,064,533	4,724,809	6,189,303	10,914,112	17,978,645	9,461,158	52.6%	8,517,487	8,517,486
4	Texas	42,701,572	20,482,896	19,926,348	40,409,244	83,110,816	39,251,254	47.2%	43,859,562	43,859,562
4	Utah	815,403	1,385,206	1,522,391	2,907,597	3,723,000	2,699,634	72.5%	1,023,366	1,023,366
1	Vermont	1,169	501,460	378,257	879,717	880,886	726,669	82.5%	154,217	154,217
2	Virginia	7,768,879	3,808,279	5,162,962	8,971,241	16,740,120	8,447,555	50.5%	8,292,565	8,292,565
6	Washington	14,605,652	6,820,697	6,412,611	13,233,308	27,838,960	15,150,892	54.4%	12,688,068	12,688,068
2	West Virginia	1,285,991	2,136,381	3,047,587	5,183,968	6,469,959	6,469,959	100.0%	0	0
5	Wisconsin	4,855,358	4,937,649	7,273,410	12,211,059	17,066,417	12,772,606	74.8%	4,293,811	4,293,811
4	Wyoming	422,807	479,341	361,723	841,064	1,263,871	657,311	52.0%	606,560	606,559

U. S. Department of Labor  
Employment and Training Administration  
**State WIA Formula Spending for Program Year 2004 per 6/30/05 Reports as of 8/29/05**  
**Local Level Spending**

Reg	State	Unexpended Carry-In To PY 2004	PY 2004 Availability			Total Available	Expenditures		Unexpended Balance 6/30/05	Unexpended Carry-Out To PY 2005
			New PY 2004 Funds				\$ 7/1/04 - 6/30/05	as % of Total Available		
			PY 2004	FY 2005	Total					
	<b>Total</b>	<b>\$680,823,481</b>	<b>\$1,208,718,182</b>	<b>\$1,169,888,476</b>	<b>\$2,378,606,658</b>	<b>\$3,059,430,139</b>	<b>\$2,444,703,464</b>	<b>79.9%</b>	<b>\$614,726,675</b>	<b>\$614,612,338</b>
3	Alabama	16,620,424	19,209,607	19,163,314	38,372,921	54,993,345	48,612,745	88.4%	6,380,600	6,380,601
6	Alaska	4,365,970	3,991,545	4,166,664	8,158,209	12,524,179	9,392,699	75.0%	3,131,480	3,131,480
6	Arizona	11,657,145	21,358,227	21,055,913	42,414,140	54,071,285	38,436,756	71.1%	15,634,529	15,634,529
4	Arkansas	7,788,516	9,731,541	8,600,207	18,331,748	26,120,264	20,989,607	80.4%	5,130,657	5,130,657
6	California	79,063,319	174,057,254	166,994,295	341,051,549	420,114,868	351,908,830	83.8%	68,206,038	68,206,038
4	Colorado	7,855,740	14,548,033	13,414,863	27,962,896	35,818,636	26,864,110	75.0%	8,954,526	8,954,526
1	Connecticut	1,717,927	9,088,947	8,178,404	17,267,351	18,985,278	16,582,385	87.3%	2,402,893	2,402,893
2	Delaware	1,740,103	2,923,598	2,265,453	5,189,051	6,929,154	5,193,277	74.9%	1,735,877	1,735,878
2	District of Columbia	4,896,188	3,750,913	3,828,135	7,579,048	12,475,236	10,138,213	81.3%	2,337,023	2,337,022
3	Florida	23,848,712	55,262,614	58,702,595	113,965,209	137,813,921	107,488,175	78.0%	30,325,746	30,325,746
3	Georgia	14,611,745	25,014,948	23,096,095	48,111,043	62,722,788	48,129,877	76.7%	14,592,911	14,592,912
6	Hawaii	5,694,918	4,532,663	3,851,441	8,384,104	14,079,022	9,787,512	69.5%	4,291,510	4,291,510
6	Idaho	1,886,223	4,513,740	4,070,878	8,584,618	10,470,841	9,374,240	89.5%	1,096,601	1,096,601
5	Illinois	23,997,317	57,160,362	56,448,821	113,609,183	137,606,500	114,229,376	83.0%	23,377,124	23,377,124
5	Indiana	8,390,577	19,203,536	16,806,592	36,010,128	44,400,705	36,297,127	81.7%	8,103,578	8,103,577
5	Iowa	2,058,418	5,931,033	5,247,531	11,178,564	13,236,982	10,605,114	80.1%	2,631,868	2,616,327
5	Kansas	5,996,554	8,382,588	7,092,655	15,475,243	21,471,797	14,658,136	68.3%	6,813,661	6,813,662
3	Kentucky	17,863,774	16,952,635	15,240,437	32,193,072	50,056,846	34,966,047	69.9%	15,090,799	15,090,799
4	Louisiana	33,775,722	23,770,387	22,212,101	45,982,488	79,758,210	62,408,285	78.2%	17,349,925	17,349,925
1	Maine	749,998	3,459,630	2,997,758	6,457,388	7,207,386	6,305,967	87.5%	901,419	901,419
2	Maryland	5,788,361	13,021,118	12,607,399	25,628,517	31,416,878	25,934,768	82.6%	5,482,110	5,482,111
1	Massachusetts	4,290,984	20,411,668	18,798,904	39,210,572	43,501,556	37,262,671	85.7%	6,238,885	6,238,885
5	Michigan	21,607,697	48,768,154	52,300,037	101,068,191	122,675,888	101,479,801	82.7%	21,196,087	21,196,087
5	Minnesota	1,903,257	11,367,846	10,066,625	21,434,471	23,337,728	21,278,863	91.2%	2,058,865	2,058,864
3	Mississippi	14,742,339	15,010,851	15,281,648	30,292,499	45,034,838	35,240,211	78.3%	9,794,627	9,794,626
5	Missouri	7,150,605	19,632,161	18,157,831	37,789,992	44,940,597	39,538,458	88.0%	5,402,139	5,402,139
4	Montana	1,247,513	3,229,814	2,615,801	5,845,615	7,093,128	5,891,262	83.1%	1,201,866	1,201,866
5	Nebraska	3,474,209	3,346,128	3,024,047	6,370,175	9,844,384	7,093,273	72.1%	2,751,111	2,751,112
6	Nevada	6,049,740	6,846,042	7,350,530	14,196,572	20,246,312	18,132,991	89.6%	2,113,321	2,113,321
1	New Hampshire	2,055,486	3,086,813	3,038,889	6,125,702	8,181,188	5,612,886	68.6%	2,568,302	2,568,302
1	New Jersey	27,131,666	32,218,416	32,052,798	64,271,214	91,402,880	62,055,350	67.9%	29,347,530	29,347,530
4	New Mexico	6,618,345	7,521,994	6,485,038	14,007,032	20,625,377	11,751,370	57.0%	8,874,007	8,874,007
1	New York	50,089,477	85,393,384	82,387,142	167,780,526	217,870,003	184,438,708	84.7%	33,431,295	33,431,295
3	North Carolina	32,713,660	40,007,123	43,290,852	83,297,975	116,011,635	80,016,356	69.0%	35,995,279	35,995,280
4	North Dakota	370,174	2,711,734	2,084,390	4,796,124	5,166,298	4,686,867	90.7%	479,431	479,430
5	Ohio	48,282,417	46,639,456	43,164,805	89,804,261	138,086,678	83,859,549	60.7%	54,227,129	54,227,129
4	Oklahoma	5,854,413	10,885,888	9,508,579	20,394,467	26,248,880	19,413,513	74.0%	6,835,367	6,759,055
6	Oregon	9,389,338	21,317,693	21,510,895	42,828,588	52,217,926	43,888,473	84.0%	8,329,453	8,329,453
2	Pennsylvania	16,977,054	48,265,422	44,775,301	93,040,723	110,017,777	89,235,321	81.1%	20,782,456	20,782,456
1	Puerto Rico	21,515,062	45,243,734	38,551,433	83,795,167	105,310,229	87,968,451	83.5%	17,341,778	17,341,632
1	Rhode Island	1,075,850	3,697,574	3,152,957	6,850,531	7,926,381	6,457,034	81.5%	1,469,347	1,469,347
3	South Carolina	10,376,072	17,370,050	16,562,999	33,933,049	44,309,121	38,365,283	86.6%	5,943,838	5,943,838
4	South Dakota	1,711,694	2,705,745	2,064,314	4,770,059	6,481,753	5,282,247	81.5%	1,199,506	1,199,506
3	Tennessee	14,222,809	19,435,761	17,300,293	36,736,054	50,958,863	38,624,000	75.8%	12,334,863	12,334,864
4	Texas	42,958,160	107,620,876	111,947,414	219,568,290	262,526,450	225,470,148	85.9%	37,056,302	37,056,302
4	Utah	4,141,794	7,407,842	7,602,491	15,010,333	19,152,127	15,596,118	81.4%	3,556,009	3,556,009
1	Vermont	7,468	2,707,758	2,123,209	4,830,967	4,838,435	4,803,601	99.3%	34,834	34,834
2	Virginia	11,374,343	15,444,828	13,625,853	29,070,681	40,445,024	29,956,037	74.1%	10,488,987	10,488,987
6	Washington	19,709,414	34,478,274	38,319,670	72,797,944	92,507,358	73,763,835	79.7%	18,743,523	18,743,523
2	West Virginia	3,917,576	8,877,970	7,568,587	16,446,557	20,364,133	19,212,774	94.3%	1,151,359	1,151,359
5	Wisconsin	7,970,220	18,507,703	17,083,824	35,591,527	43,561,747	34,918,710	80.2%	8,643,037	8,620,696
4	Wyoming	1,526,994	2,694,561	2,049,769	4,744,330	6,271,324	5,106,057	81.4%	1,165,267	1,165,267

U. S. Department of Labor  
Employment and Training Administration  
**State WIA Formula Spending for Program Year 2004 per 6/30/05 Reports as of 8/29/05**  
**Fund Utilization Rate by Report Activity**

Reg	State	Statewide 15%	Statewide Rapid Response	Local Administration	Local Adults	Local Youth	Local Dislocated Workers
	<b>Total</b>	<b>55.4%</b>	<b>51.4%</b>	<b>70.4%</b>	<b>82.2%</b>	<b>83.2%</b>	<b>77.3%</b>
3	Alabama	68.7%	89.0%	79.6%	90.3%	91.4%	82.3%
6	Alaska	79.3%	60.6%	70.1%	88.3%	85.5%	63.9%
6	Arizona	42.5%	67.7%	76.7%	81.6%	71.9%	55.5%
4	Arkansas	51.4%	47.1%	74.3%	86.6%	78.4%	76.7%
6	California	62.6%	58.4%	68.8%	87.3%	85.8%	83.5%
4	Colorado	50.8%	26.0%	51.0%	85.7%	75.7%	72.1%
1	Connecticut	87.2%	63.7%	88.1%	87.5%	89.1%	84.8%
2	Delaware	63.4%	73.3%	90.9%	56.8%	94.3%	68.3%
2	District of Columbia	67.0%	97.5%	93.4%	81.1%	77.1%	82.7%
3	Florida	40.5%	-39.8%	59.9%	73.5%	88.4%	80.1%
3	Georgia	56.7%	64.8%	68.4%	71.8%	90.7%	70.0%
6	Hawaii	66.4%	87.6%	72.0%	79.5%	56.6%	75.1%
6	Idaho	57.6%	89.4%	53.9%	96.5%	92.9%	100.0%
5	Illinois	43.7%	80.4%	63.3%	92.2%	84.2%	81.0%
5	Indiana	43.5%	48.0%	72.6%	86.0%	80.1%	83.2%
5	Iowa	50.3%	50.5%	73.8%	84.0%	76.8%	82.7%
5	Kansas	62.1%	18.1%	59.1%	66.7%	75.8%	61.1%
3	Kentucky	33.4%	59.3%	60.1%	76.9%	70.7%	62.7%
4	Louisiana	64.2%	51.5%	65.1%	81.7%	81.2%	75.9%
1	Maine	58.6%	88.1%	62.2%	94.6%	90.0%	88.9%
2	Maryland	62.9%	83.7%	84.7%	86.5%	78.5%	81.8%
1	Massachusetts	72.4%	52.9%	82.7%	88.6%	83.0%	87.3%
5	Michigan	52.3%	64.1%	77.8%	87.1%	89.9%	75.3%
5	Minnesota	54.2%	51.6%	90.0%	88.6%	96.0%	88.8%
3	Mississippi	71.0%	74.6%	58.4%	86.7%	81.8%	73.1%
5	Missouri	99.3%	64.3%	82.6%	92.6%	87.7%	85.7%
4	Montana	78.7%	99.5%	48.1%	92.3%	87.0%	87.0%
5	Nebraska	40.7%	19.2%	78.3%	74.2%	76.6%	63.8%
6	Nevada	65.4%	100.0%	82.8%	83.6%	100.0%	90.1%
1	New Hampshire	48.4%	77.9%	56.1%	63.6%	68.3%	76.9%
1	New Jersey	77.8%	40.8%	70.9%	57.6%	74.2%	70.9%
4	New Mexico	70.9%	-60.0%	82.7%	45.3%	71.6%	12.2%
1	New York	52.2%	31.4%	81.3%	89.2%	87.4%	78.3%
3	North Carolina	54.6%	52.9%	61.2%	79.6%	75.4%	59.7%
4	North Dakota	53.3%	73.1%	90.4%	92.9%	89.4%	89.4%
5	Ohio	60.1%	44.4%	58.4%	62.3%	62.2%	57.4%
4	Oklahoma	56.4%	41.1%	70.8%	75.4%	78.2%	66.3%
6	Oregon	55.6%	52.5%	61.2%	91.9%	87.8%	84.2%
2	Pennsylvania	53.4%	46.5%	63.9%	83.3%	85.4%	80.9%
1	Puerto Rico	47.9%	41.8%	88.7%	83.7%	86.6%	76.9%
1	Rhode Island	82.0%	82.1%	93.6%	77.5%	88.6%	73.1%
3	South Carolina	60.5%	40.9%	80.8%	87.0%	89.7%	85.0%
4	South Dakota	63.6%	73.6%	70.6%	85.4%	86.9%	62.3%
3	Tennessee	61.6%	38.8%	73.1%	75.1%	81.6%	69.9%
4	Texas	44.7%	62.0%	70.5%	86.0%	88.6%	88.7%
4	Utah	70.6%	100.0%	100.0%	72.7%	80.7%	88.8%
1	Vermont	82.0%	100.0%	100.0%	98.8%	99.9%	98.6%
2	Virginia	56.3%	43.6%	62.4%	76.0%	76.7%	73.2%
6	Washington	49.1%	75.7%	65.7%	87.3%	85.7%	75.1%
2	West Virginia	100.0%	100.0%	88.2%	94.1%	94.2%	97.0%
5	Wisconsin	76.4%	72.0%	79.3%	81.6%	81.0%	78.3%
4	Wyoming	51.9%	100.0%	51.6%	84.8%	92.0%	76.0%

U. S. Department of Labor  
Employment and Training Administration  
**State WIA Formula Spending for Program Year 2004 per 6/30/05 Reports as of 8/29/05**  
WIA SF-269 Report: Statewide 15%

Reg	State	Unexpended Carry-In To PY 2004	PY 2004 Availability New PY 2004 Funds			Total Available	Expenditures		Unexpended Balance 6/30/05	Unexpended Carry-Out To PY 2005
			PY 2004	FY 2005	Total		\$ 7/1/04 - 6/30/05	as % of Total Available		
	<b>Total</b>	<b>\$360,540,462</b>	<b>\$223,628,973</b>	<b>\$226,722,595</b>	<b>\$450,351,568</b>	<b>\$810,892,030</b>	<b>\$448,981,857</b>	<b>55.4%</b>	<b>\$361,910,173</b>	<b>\$353,908,660</b>
3	Alabama	6,808,850	3,389,931	3,381,761	6,771,692	13,580,542	9,327,482	68.7%	4,253,060	4,253,060
6	Alaska	463,741	718,422	771,041	1,489,463	1,953,204	1,548,365	79.3%	404,839	354,737
6	Arizona	6,275,369	4,058,637	4,091,069	8,149,706	14,425,075	6,127,070	42.5%	8,298,005	8,298,005
4	Arkansas	3,965,618	1,815,888	1,687,838	3,503,726	7,469,344	3,842,674	51.4%	3,626,670	3,626,668
6	California	28,797,884	32,972,089	35,217,358	68,189,447	96,987,331	60,727,387	62.6%	36,259,944	35,749,076
4	Colorado	2,884,257	2,611,092	2,840,536	5,451,628	8,335,885	4,231,313	50.8%	4,104,572	4,104,572
1	Connecticut	835,990	1,715,424	1,727,294	3,442,718	4,278,708	3,731,925	87.2%	546,783	546,783
2	Delaware	420,159	348,480	418,777	767,257	1,187,416	752,571	63.4%	434,845	434,844
2	District of Col	912,688	667,220	675,553	1,342,773	2,255,461	1,511,774	67.0%	743,687	743,688
3	Florida	14,855,218	9,876,208	10,662,223	20,538,431	35,393,649	14,352,021	40.5%	21,041,628	21,041,628
3	Georgia	4,031,794	4,710,378	4,664,139	9,374,517	13,406,311	7,607,631	56.7%	5,798,680	5,798,679
6	Hawaii	1,465,009	803,205	662,471	1,465,676	2,930,685	1,946,772	66.4%	983,913	983,913
6	Idaho	1,176,971	852,601	856,378	1,708,979	2,885,950	1,661,833	57.6%	1,224,117	1,224,117
5	Illinois	32,461,189	11,223,184	11,057,646	22,280,830	54,742,019	23,944,602	43.7%	30,797,417	29,776,909
5	Indiana	5,408,339	3,606,665	3,360,079	6,966,744	12,375,083	5,386,337	43.5%	6,988,746	6,988,747
5	Iowa	1,364,075	1,088,764	979,030	2,067,794	3,431,869	1,726,392	50.3%	1,705,477	1,705,477
5	Kansas	1,752,472	1,568,834	1,402,625	2,971,459	4,723,931	2,934,799	62.1%	1,789,132	1,789,129
3	Kentucky	7,601,079	3,170,108	3,144,159	6,314,267	13,915,346	4,653,223	33.4%	9,262,123	8,291,851
4	Louisiana	13,027,039	4,283,977	4,015,878	8,299,855	21,326,894	13,695,853	64.2%	7,631,041	7,631,041
1	Maine	572,962	644,484	615,537	1,260,021	1,832,983	1,073,367	58.6%	759,616	759,616
2	Maryland	3,855,170	2,385,564	2,448,316	4,833,880	8,689,050	5,467,286	62.9%	3,221,764	3,221,763
1	Massachusetts	1,810,047	3,915,393	4,115,717	8,031,110	9,841,157	7,124,518	72.4%	2,716,639	2,525,481
5	Michigan	11,314,684	8,660,627	9,369,337	18,029,964	29,344,648	15,356,296	52.3%	13,988,352	13,988,352
5	Minnesota	3,533,326	2,145,180	2,019,874	4,165,054	7,698,380	4,175,712	54.2%	3,522,668	3,511,701
3	Mississippi	2,474,965	2,531,296	2,167,273	4,698,569	7,173,534	5,095,719	71.0%	2,077,815	2,077,817
5	Missouri	2,498,697	3,703,870	3,710,148	7,414,018	9,912,715	9,845,450	99.3%	67,265	67,265
4	Montana	536,896	590,017	512,687	1,102,704	1,639,600	1,291,075	78.7%	348,525	348,525
5	Nebraska	1,963,702	604,593	569,580	1,174,173	3,137,875	1,278,597	40.7%	1,859,278	1,859,277
6	Nevada	2,020,231	1,221,362	1,336,858	2,558,220	4,578,451	2,995,067	65.4%	1,583,384	1,583,384
1	New Hampshire	805,535	558,898	572,702	1,131,600	1,937,135	937,459	48.4%	999,676	999,677
1	New Jersey	4,985,194	6,069,576	6,614,547	12,684,123	17,669,317	13,750,197	77.8%	3,919,120	3,919,121
4	New Mexico	5,850,138	1,398,326	1,278,277	2,676,603	8,526,741	6,042,659	70.9%	2,484,082	2,484,082
1	New York	41,175,368	16,167,502	17,335,983	33,503,485	74,678,853	39,011,453	52.2%	35,667,400	35,667,400
3	North Carolina	11,777,142	7,060,080	7,232,117	14,292,197	26,069,339	14,238,042	54.6%	11,831,297	11,831,296
4	North Dakota	445,565	484,717	383,716	868,433	1,313,998	700,333	53.3%	613,665	613,666
5	Ohio	16,354,767	8,793,867	8,646,345	17,440,212	33,794,979	20,299,903	60.1%	13,495,076	13,495,076
4	Oklahoma	1,502,382	2,032,069	1,960,849	3,992,918	5,495,300	3,101,376	56.4%	2,393,924	2,393,925
6	Oregon	5,830,562	3,980,007	4,381,551	8,361,558	14,192,120	7,896,015	55.6%	6,296,105	6,296,105
2	Pennsylvania	10,866,513	9,112,941	9,101,270	18,214,211	29,080,724	15,528,773	53.4%	13,551,951	13,529,315
1	Puerto Rico	33,627,263	8,361,612	7,401,905	15,763,517	49,390,780	23,671,131	47.9%	25,719,649	20,494,651
1	Rhode Island	0	695,155	665,040	1,360,195	1,360,195	1,115,976	82.0%	244,219	244,219
3	South Carolina	5,675,614	3,288,646	3,414,000	6,702,646	12,378,260	7,488,669	60.5%	4,889,591	4,889,591
4	South Dakota	815,743	479,690	370,907	850,597	1,666,340	1,060,166	63.6%	606,174	606,174
3	Tennessee	3,845,961	3,624,085	3,418,960	7,043,045	10,889,006	6,710,680	61.6%	4,178,326	4,178,325
4	Texas	33,019,912	19,215,567	18,877,091	38,092,658	71,112,570	31,816,298	44.7%	39,296,272	39,296,272
4	Utah	791,212	1,318,956	1,368,732	2,687,688	3,478,900	2,455,534	70.6%	1,023,366	1,023,366
1	Vermont	1,016	481,380	375,219	856,599	857,615	703,398	82.0%	154,217	154,217
2	Virginia	3,316,232	2,887,966	2,818,322	5,706,288	9,022,520	5,082,826	56.3%	3,939,694	3,939,694
6	Washington	9,776,860	6,085,360	6,403,209	12,488,569	22,265,429	10,933,365	49.1%	11,332,064	11,332,064
2	West Virginia	617,960	1,656,192	1,605,363	3,261,555	3,879,515	3,879,515	100.0%	0	0
5	Wisconsin	3,948,295	3,516,803	3,653,585	7,170,388	11,118,683	8,490,923	76.4%	2,627,760	2,627,760
4	Wyoming	422,807	476,085	361,723	837,808	1,260,615	654,055	51.9%	606,560	606,559

U. S. Department of Labor  
Employment and Training Administration  
**State WIA Formula Spending for Program Year 2004 per 6/30/05 Reports as of 8/29/05**  
**WIA SF-269 Report: Statewide Rapid Response**

Reg	State	PY 2004 Availability			Total Available	Expenditures		Unexpended Balance 6/30/05	Unexpended Carry-Out To PY 2005	
		Unexpended Carry-In To PY 2004	New PY 2004 Funds			\$ 7/1/04 - 6/30/05	as % of Total Available			
		PY 2004	FY 2005	Total						
<b>Total</b>		<b>\$136,737,644</b>	<b>\$58,871,748</b>	<b>\$146,916,316</b>	<b>\$205,788,064</b>	<b>\$342,525,708</b>	<b>\$176,098,421</b>	<b>51.4%</b>	<b>\$166,427,287</b>	<b>\$166,093,147</b>
3	Alabama	4,195,801	0	0	0	4,195,801	3,734,998	89.0%	460,803	460,803
6	Alaska	0	79,510	202,563	282,073	282,073	170,803	60.6%	111,270	111,270
6	Arizona	3,138,733	540,692	1,274,621	1,815,313	4,954,046	3,354,439	67.7%	1,599,607	1,599,607
4	Arkansas	856,403	558,506	1,422,881	1,981,387	2,837,790	1,336,904	47.1%	1,500,886	1,500,886
6	California	24,032,025	12,784,596	32,570,738	45,355,334	69,387,359	40,548,718	58.4%	28,838,641	28,838,641
4	Colorado	1,549,964	248,159	2,681,512	2,929,671	4,479,635	1,163,980	26.0%	3,315,655	3,315,655
1	Connecticut	1,218,898	631,794	1,609,592	2,241,386	3,460,284	2,203,392	63.7%	1,256,892	1,256,892
2	Delaware	247	51,124	107,628	158,752	158,999	116,589	73.3%	42,410	42,410
2	District of Col	55,000	30,000	0	30,000	85,000	82,866	97.5%	2,134	2,134
3	Florida	5,875,437	702,567	1,716,674	2,419,241	8,294,678	(3,302,337)	-39.8%	11,597,015	11,597,015
3	Georgia	3,629,113	1,677,197	4,221,230	5,898,427	9,527,540	6,174,544	64.8%	3,352,996	3,352,996
6	Hawaii	12,139	18,844	37,425	56,269	68,408	59,949	87.6%	8,459	8,459
6	Idaho	0	317,673	781,940	1,099,613	1,099,613	983,221	89.4%	116,392	116,392
5	Illinois	6,951,500	4,569,184	11,699,290	16,268,474	23,219,974	18,658,905	80.4%	4,561,069	4,561,069
5	Indiana	1,344,239	1,230,225	3,134,189	4,364,414	5,708,653	2,741,916	48.0%	2,966,737	2,966,737
5	Iowa	915,776	238,635	612,862	851,497	1,767,273	891,963	50.5%	875,310	875,310
5	Kansas	864,754	507,490	1,303,328	1,810,818	2,675,572	483,254	18.1%	2,192,318	2,192,318
3	Kentucky	3,595,078	1,011,309	2,576,466	3,587,775	7,182,853	4,262,301	59.3%	2,920,552	2,881,147
4	Louisiana	3,073,446	505,487	1,209,915	1,715,402	4,788,848	2,468,268	51.5%	2,320,580	2,320,580
1	Maine	102,402	192,446	490,284	682,730	785,132	691,632	88.1%	93,500	93,500
2	Maryland	797,616	497,080	1,266,389	1,763,469	2,561,085	2,144,649	83.7%	416,436	416,436
1	Massachusetts	2,214,545	1,775,552	4,523,493	6,299,045	8,513,590	4,500,313	52.9%	4,013,277	4,013,277
5	Michigan	236,028	308,727	792,873	1,101,600	1,337,628	856,982	64.1%	480,646	441,904
5	Minnesota	1,511,869	788,167	2,024,171	2,812,338	4,324,207	2,231,952	51.6%	2,092,255	2,088,755
3	Mississippi	1,989,902	961,547	1,072,711	2,034,258	4,024,160	3,001,732	74.6%	1,022,428	1,022,428
5	Missouri	1,577,705	1,356,442	3,388,861	4,745,303	6,323,008	4,066,722	64.3%	2,256,286	2,256,286
4	Montana	10,003	113,608	289,435	403,043	413,046	410,998	99.5%	2,048	2,048
5	Nebraska	405,290	79,912	203,587	283,499	688,789	131,984	19.2%	556,805	556,805
6	Nevada	243,545	75,000	225,000	300,000	543,545	543,545	100.0%	0	0
1	New Hampshire	64,378	80,273	206,416	286,689	351,067	273,637	77.9%	77,430	77,430
1	New Jersey	5,124,783	2,175,845	6,308,989	8,484,834	13,609,617	5,556,117	40.8%	8,053,500	8,053,500
4	New Mexico	359,260	401,867	1,002,677	1,404,544	1,763,804	(1,058,291)	-60.0%	2,822,095	2,822,095
1	New York	11,661,724	6,222,455	15,850,096	22,072,551	33,734,275	10,608,164	31.4%	23,126,111	23,126,111
3	North Carolina	2,658,568	0	0	0	2,658,568	1,405,929	52.9%	1,252,639	1,252,639
4	North Dakota	36,992	35,000	90,000	125,000	161,992	118,484	73.1%	43,508	43,508
5	Ohio	3,223,850	3,192,456	8,133,275	11,325,731	14,549,581	6,458,554	44.4%	8,091,027	8,091,027
4	Oklahoma	1,262,616	629,169	1,602,906	2,232,075	3,494,691	1,434,833	41.1%	2,059,858	2,059,858
6	Oregon	1,777,788	1,235,836	3,148,483	4,384,319	6,162,107	3,232,882	52.5%	2,929,225	2,929,225
2	Pennsylvania	8,048,214	3,374,574	8,493,251	11,867,825	19,916,039	9,251,937	46.5%	10,664,102	10,664,102
1	Puerto Rico	5,196,709	2,138,733	5,448,753	7,587,486	12,784,195	5,349,508	41.8%	7,434,687	7,182,194
1	Rhode Island	0	241,636	615,604	857,240	857,240	704,160	82.1%	153,080	153,080
3	South Carolina	3,105,526	1,265,607	3,146,320	4,411,927	7,517,453	3,071,597	40.9%	4,445,856	4,445,856
4	South Dakota	38,669	12,500	37,500	50,000	88,669	65,284	73.6%	23,385	23,385
3	Tennessee	3,218,572	1,100,724	2,770,343	3,871,067	7,089,639	2,750,478	38.8%	4,339,161	4,339,161
4	Texas	9,681,660	1,267,329	1,049,257	2,316,586	11,998,246	7,434,956	62.0%	4,563,290	4,563,290
4	Utah	24,191	66,250	153,659	219,909	244,100	244,100	100.0%	0	0
1	Vermont	153	20,080	3,038	23,118	23,271	23,271	100.0%	0	0
2	Virginia	4,452,647	920,313	2,344,640	3,264,953	7,717,600	3,364,729	43.6%	4,352,871	4,352,871
6	Washington	4,828,792	735,337	9,402	744,739	5,573,531	4,217,527	75.7%	1,356,004	1,356,004
2	West Virginia	668,031	480,189	1,442,224	1,922,413	2,590,444	2,590,444	100.0%	0	0
5	Wisconsin	907,063	1,420,846	3,619,825	5,040,671	5,947,734	4,281,683	72.0%	1,666,051	1,666,051
4	Wyoming	0	3,256	0	3,256	3,256	3,256	100.0%	0	0

U. S. Department of Labor  
Employment and Training Administration  
**State WIA Formula Spending for Program Year 2004 per 6/30/05 Reports as of 8/29/05**  
**WIA SF-269 Report: Local Administration**

Reg	State	PY 2004 Availability				Expenditures			Unexpended Balance 6/30/05	Unexpended Carry-Out To PY 2005
		Unexpended Carry-In To PY 2004	New PY 2004 Funds			Total Available	\$ 7/1/04 - 6/30/05	as % of Total Available		
PY 2004	FY 2005		Total							
	<b>Total</b>	<b>\$97,128,578</b>	<b>\$116,930,238</b>	<b>\$112,879,986</b>	<b>\$229,810,224</b>	<b>\$326,938,802</b>	<b>\$230,314,338</b>	<b>70.4%</b>	<b>\$96,624,464</b>	<b>\$96,616,831</b>
3	Alabama	2,000,037	1,920,956	928,755	2,849,711	4,849,748	3,860,505	79.6%	989,243	989,244
6	Alaska	159,725	399,154	416,666	815,820	975,545	684,325	70.1%	291,220	291,220
6	Arizona	496,066	1,659,748	1,746,510	3,406,258	3,902,324	2,991,297	76.7%	911,027	911,027
4	Arkansas	838,584	973,156	860,020	1,833,176	2,671,760	1,984,604	74.3%	687,156	687,156
6	California	13,546,562	16,895,121	16,699,429	33,594,550	47,141,112	32,416,304	68.8%	14,724,808	14,724,808
4	Colorado	1,104,426	1,454,801	1,340,196	2,794,997	3,899,423	1,989,152	51.0%	1,910,271	1,910,271
1	Connecticut	184,648	908,895	817,840	1,726,735	1,911,383	1,683,889	88.1%	227,494	227,494
2	Delaware	33,683	252,361	226,546	478,907	512,590	465,727	90.9%	46,863	46,864
2	District of Col	290,125	375,091	382,814	757,905	1,048,030	978,762	93.4%	69,268	69,267
3	Florida	1,201,997	5,526,261	5,870,260	11,396,521	12,598,518	7,542,728	59.9%	5,055,790	5,055,790
3	Georgia	1,844,438	2,501,494	2,309,610	4,811,104	6,655,542	4,549,978	68.4%	2,105,564	2,105,565
6	Hawaii	629,679	453,265	385,143	838,408	1,468,087	1,057,114	72.0%	410,973	410,973
6	Idaho	769,780	451,371	404,349	855,720	1,625,500	876,632	53.9%	748,868	748,868
5	Illinois	5,588,938	5,648,001	5,644,885	11,292,886	16,881,824	10,686,320	63.3%	6,195,504	6,195,504
5	Indiana	1,230,644	1,920,354	1,680,659	3,601,013	4,831,657	3,509,067	72.6%	1,322,590	1,322,589
5	Iowa	298,736	593,102	524,752	1,117,854	1,416,590	1,045,768	73.8%	370,822	370,817
5	Kansas	759,302	602,653	709,262	1,311,915	2,071,217	1,225,075	59.1%	846,142	846,143
3	Kentucky	2,837,948	1,649,216	1,430,542	3,079,758	5,917,706	3,556,498	60.1%	2,361,208	2,361,208
4	Louisiana	4,319,010	2,377,012	2,221,196	4,598,208	8,917,218	5,805,816	65.1%	3,111,402	3,111,402
1	Maine	295,040	345,962	299,777	645,739	940,779	585,090	62.2%	355,689	355,689
2	Maryland	1,317,003	1,302,112	1,260,740	2,562,852	3,879,855	3,287,161	84.7%	592,694	592,695
1	Massachusetts	684,398	2,041,166	1,879,891	3,921,057	4,605,455	3,808,708	82.7%	796,747	796,747
5	Michigan	3,929,968	4,450,561	5,157,968	9,608,529	13,538,497	10,531,599	77.8%	3,006,898	3,006,898
5	Minnesota	218,318	1,136,783	1,006,663	2,143,446	2,361,764	2,125,380	90.0%	236,384	236,383
3	Mississippi	1,847,699	1,476,658	1,095,830	2,572,488	4,420,187	2,579,896	58.4%	1,840,291	1,840,290
5	Missouri	1,091,486	1,963,215	1,815,782	3,778,997	4,870,483	4,023,635	82.6%	846,848	846,848
4	Montana	456,397	322,981	261,580	584,561	1,040,958	501,184	48.1%	539,774	539,774
5	Nebraska	185,530	334,613	302,404	637,017	822,547	644,106	78.3%	178,441	178,442
6	Nevada	881,062	684,604	735,053	1,419,657	2,300,719	1,904,034	82.8%	396,685	396,685
1	New Hampshire	133,461	308,681	244,067	552,748	686,209	384,947	56.1%	301,262	301,262
1	New Jersey	2,029,222	2,978,766	3,205,280	6,184,046	8,213,268	5,824,782	70.9%	2,388,486	2,388,486
4	New Mexico	907,946	752,198	648,503	1,400,701	2,308,647	1,910,179	82.7%	398,468	398,468
1	New York	9,775,350	8,399,337	7,989,332	16,388,669	26,164,019	21,270,243	81.3%	4,893,776	4,893,776
3	North Carolina	5,706,767	4,000,713	4,329,084	8,329,797	14,036,564	8,584,269	61.2%	5,452,295	5,452,296
4	North Dakota	58,137	271,173	208,439	479,612	537,749	486,085	90.4%	51,663	51,663
5	Ohio	4,278,342	4,130,072	3,575,074	7,705,146	11,983,488	7,004,168	58.4%	4,979,320	4,979,320
4	Oklahoma	636,830	1,080,186	950,853	2,031,039	2,667,869	1,889,419	70.8%	778,450	770,818
6	Oregon	3,157,432	2,023,266	2,039,414	4,062,680	7,220,112	4,421,750	61.2%	2,798,362	2,798,362
2	Pennsylvania	2,817,498	4,826,542	4,477,530	9,304,072	12,121,570	7,741,643	63.9%	4,379,927	4,379,927
1	Puerto Rico	1,513,663	4,452,269	3,749,824	8,202,093	9,715,756	8,618,498	88.7%	1,097,258	1,097,258
1	Rhode Island	30,459	369,757	315,296	685,053	715,512	669,674	93.6%	45,838	45,838
3	South Carolina	1,741,639	1,462,579	1,494,389	2,956,968	4,698,607	3,794,447	80.8%	904,160	904,160
4	South Dakota	65,441	270,574	206,430	477,004	542,445	382,989	70.6%	159,456	159,456
3	Tennessee	1,952,134	1,943,577	1,730,029	3,673,606	5,625,740	4,111,034	73.1%	1,514,706	1,514,707
4	Texas	6,113,022	10,762,086	11,194,741	21,956,827	28,069,849	19,799,787	70.5%	8,270,062	8,270,062
4	Utah	0	29,545	154,048	183,593	183,593	183,593	100.0%	0	0
1	Vermont	9,714	265,521	194,121	459,642	469,356	469,356	100.0%	0	0
2	Virginia	1,416,670	1,544,482	1,362,586	2,907,068	4,323,738	2,697,589	62.4%	1,626,149	1,626,149
6	Washington	3,799,738	3,430,226	3,717,035	7,147,261	10,946,999	7,187,060	65.7%	3,759,939	3,759,939
2	West Virginia	437,870	887,795	765,430	1,653,225	2,091,095	1,845,242	88.2%	245,853	245,853
5	Wisconsin	1,051,346	1,850,770	1,708,382	3,559,152	4,610,498	3,657,366	79.3%	953,132	953,133
4	Wyoming	454,668	269,456	204,977	474,433	929,101	479,864	51.6%	449,237	449,237

U. S. Department of Labor  
Employment and Training Administration  
**State WIA Formula Spending for Program Year 2004 per 6/30/05 Reports as of 8/29/05**  
**WIA SF-269 Report: Local Adult**

Reg	State	PY 2004 Availability				Total Available	Expenditures		Unexpended Balance 6/30/05	Unexpended Carry-Out To PY 2005
		Unexpended Carry-In To PY 2004	New PY 2004 Funds				\$ 7/1/04 - 6/30/05	as % of Total Available		
		PY 2004	FY 2005	Total						
	<b>Total</b>	<b>\$200,450,129</b>	<b>\$159,559,762</b>	<b>\$592,930,640</b>	<b>\$752,490,402</b>	<b>\$952,940,531</b>	<b>\$783,149,006</b>	<b>82.2%</b>	<b>\$169,791,525</b>	<b>\$169,791,369</b>
3	Alabama	8,049,446	4,115,253	15,773,646	19,888,899	27,938,345	25,220,985	90.3%	2,717,360	2,717,360
6	Alaska	353,452	454,744	1,718,581	2,173,325	2,526,777	2,232,402	88.3%	294,375	294,375
6	Arizona	4,286,565	3,235,833	11,420,231	14,656,064	18,942,629	15,455,149	81.6%	3,487,480	3,487,480
4	Arkansas	2,812,243	1,313,125	4,641,979	5,955,104	8,767,347	7,596,066	86.6%	1,171,281	1,171,281
6	California	20,347,649	21,793,546	85,982,857	107,776,403	128,124,052	111,825,632	87.3%	16,298,420	16,298,420
4	Colorado	2,029,806	1,793,987	6,987,306	8,781,293	10,811,099	9,268,983	85.7%	1,542,116	1,542,116
1	Connecticut	364,719	1,027,682	4,123,845	5,151,527	5,516,246	4,825,781	87.5%	690,465	690,465
2	Delaware	892,524	356,535	1,347,430	1,703,965	2,596,489	1,473,604	56.8%	1,122,885	1,122,885
2	District of Col	1,000,825	602,657	2,190,574	2,793,231	3,794,056	3,075,473	81.1%	718,583	718,583
3	Florida	10,060,453	11,378,986	32,553,353	43,932,339	53,992,792	39,685,724	73.5%	14,307,068	14,307,068
3	Georgia	4,125,981	3,179,141	12,148,441	15,327,582	19,453,563	13,961,510	71.8%	5,492,053	5,492,053
6	Hawaii	1,695,632	533,763	2,034,087	2,567,850	4,263,482	3,390,082	79.5%	873,400	873,400
6	Idaho	364,861	500,371	1,891,014	2,391,385	2,756,246	2,658,490	96.5%	97,756	97,756
5	Illinois	5,415,991	8,036,386	25,503,209	33,539,595	38,955,586	35,919,378	92.2%	3,036,208	3,036,208
5	Indiana	1,905,137	2,178,891	8,507,042	10,685,933	12,591,070	10,830,687	86.0%	1,760,383	1,760,383
5	Iowa	506,347	564,021	2,079,978	2,643,999	3,150,346	2,646,522	84.0%	503,824	503,814
5	Kansas	1,431,651	1,063,491	3,784,402	4,847,893	6,279,544	4,186,890	66.7%	2,092,654	2,092,654
3	Kentucky	6,098,939	2,416,464	9,105,883	11,522,347	17,621,286	13,557,857	76.9%	4,063,429	4,063,429
4	Louisiana	11,457,578	3,646,485	13,291,225	16,937,710	28,395,288	23,188,654	81.7%	5,206,634	5,206,634
1	Maine	133,567	433,678	1,587,754	2,021,432	2,154,999	2,038,598	94.6%	116,401	116,401
2	Maryland	1,249,265	2,002,198	6,027,824	8,030,022	9,279,287	8,028,978	86.5%	1,250,309	1,250,309
1	Massachusetts	671,714	1,891,460	7,610,212	9,501,672	10,173,386	9,012,102	88.6%	1,161,284	1,161,284
5	Michigan	6,026,462	6,788,088	22,643,652	29,431,740	35,458,202	30,898,260	87.1%	4,559,942	4,559,942
5	Minnesota	735,252	1,230,474	5,034,426	6,264,900	7,000,152	6,200,270	88.6%	799,882	799,882
3	Mississippi	5,394,000	1,815,702	6,926,810	8,742,512	14,136,512	12,249,571	86.7%	1,886,941	1,886,941
5	Missouri	1,534,452	2,361,930	8,939,138	11,301,068	12,835,520	11,886,259	92.6%	949,261	949,261
4	Montana	174,248	457,511	1,729,042	2,186,553	2,360,801	2,179,573	92.3%	181,228	181,228
5	Nebraska	1,227,070	356,535	1,468,336	1,824,871	3,051,941	2,265,630	74.2%	786,311	786,311
6	Nevada	2,064,226	795,259	4,590,327	5,385,586	7,449,812	6,230,034	83.6%	1,219,778	1,219,778
1	New Hampshire	509,909	356,535	1,168,470	1,525,005	2,034,914	1,294,750	63.6%	740,164	740,164
1	New Jersey	9,036,130	3,371,877	14,839,072	18,210,949	27,247,079	15,684,039	57.6%	11,563,040	11,563,040
4	New Mexico	4,814,488	946,856	3,907,251	4,854,107	9,668,595	4,375,395	45.3%	5,293,200	5,293,200
1	New York	11,963,316	12,903,684	40,153,476	53,057,160	65,020,476	57,990,177	89.2%	7,030,299	7,030,299
3	North Carolina	7,168,886	4,303,542	17,432,868	21,736,410	28,905,296	22,999,064	79.6%	5,906,232	5,906,232
4	North Dakota	87,474	356,535	1,347,430	1,703,966	1,791,439	1,663,795	92.9%	127,644	127,644
5	Ohio	15,296,357	6,294,111	24,114,895	30,409,006	45,705,363	28,490,706	62.3%	17,214,657	17,214,657
4	Oklahoma	1,826,754	1,372,456	5,524,635	6,897,091	8,723,845	6,580,443	75.4%	2,143,402	2,143,402
6	Oregon	1,572,430	2,510,600	9,242,150	11,752,750	13,325,180	12,244,053	91.9%	1,081,127	1,081,127
2	Pennsylvania	4,916,941	5,807,423	22,371,188	28,178,611	33,095,552	27,557,148	83.3%	5,538,404	5,538,404
1	Puerto Rico	7,310,815	5,993,123	22,898,726	28,891,849	36,202,664	30,317,815	83.7%	5,884,849	5,884,703
1	Rhode Island	554,250	399,012	1,507,958	1,906,970	2,461,220	1,908,266	77.5%	552,954	552,954
3	South Carolina	3,549,195	2,227,458	8,420,192	10,647,650	14,196,845	12,344,379	87.0%	1,852,466	1,852,466
4	South Dakota	553,624	356,535	1,347,431	1,703,966	2,257,590	1,928,731	85.4%	328,859	328,859
3	Tennessee	4,990,120	2,658,842	10,023,900	12,682,742	17,672,862	13,270,491	75.1%	4,402,371	4,402,371
4	Texas	11,896,575	12,515,998	57,479,803	69,995,801	81,892,376	70,407,348	86.0%	11,485,028	11,485,028
4	Utah	1,217,475	1,085,243	3,709,786	4,795,029	6,012,504	4,371,085	72.7%	1,641,419	1,641,419
1	Vermont	0	356,536	1,190,860	1,547,396	1,547,396	1,528,836	98.8%	18,560	18,560
2	Virginia	2,924,460	1,904,843	7,129,417	9,034,260	11,958,720	9,084,722	76.0%	2,873,998	2,873,998
6	Washington	3,700,327	3,965,087	14,347,414	18,312,501	22,012,828	19,211,211	87.3%	2,801,617	2,801,617
2	West Virginia	1,469,874	1,154,764	4,127,591	5,282,355	6,752,229	6,356,305	94.1%	395,924	395,924
5	Wisconsin	2,413,426	1,999,512	7,556,621	9,556,133	11,969,559	9,762,715	81.6%	2,206,844	2,206,844
4	Wyoming	267,248	394,994	1,446,902	1,841,896	2,109,144	1,788,388	84.8%	320,756	320,756



U. S. Department of Labor  
Employment and Training Administration  
**State WIA Formula Spending for Program Year 2004 per 6/30/05 Reports as of 8/29/05**  
**WIA SF-269 Report: Local Youth**

Reg	State	PY 2004 Availability			Total Available	Expenditures		Unexpended Balance 6/30/05	Unexpended Carry-Out To PY 2005	
		Unexpended Carry-In To PY 2004	New PY 2004 Funds			\$ 7/1/04 - 6/30/05	as % of Total Available			
			PY 2004	FY 2005						Total
	<b>Total</b>	<b>\$187,318,135</b>	<b>\$748,857,297</b>	<b>\$0</b>	<b>\$748,857,297</b>	<b>\$936,175,432</b>	<b>\$778,969,270</b>	<b>83.2%</b>	<b>\$157,206,162</b>	<b>\$157,115,129</b>
3	Alabama	2,214,070	11,613,081	0	11,613,081	13,827,151	12,632,631	91.4%	1,194,520	1,194,520
6	Alaska	961,251	2,340,280	0	2,340,280	3,301,531	2,822,993	85.5%	478,538	478,538
6	Arizona	2,845,368	13,413,144	0	13,413,144	16,258,512	11,684,257	71.9%	4,574,255	4,574,255
4	Arkansas	2,078,563	6,333,551	0	6,333,551	8,412,114	6,597,641	78.4%	1,814,473	1,814,473
6	California	28,891,865	107,883,814	0	107,883,814	136,775,679	117,418,494	85.8%	19,357,185	19,357,185
4	Colorado	2,404,081	8,268,584	0	8,268,584	10,672,665	8,083,682	75.7%	2,588,983	2,588,983
1	Connecticut	581,490	5,787,697	0	5,787,697	6,369,187	5,672,607	89.1%	696,580	696,580
2	Delaware	429,947	2,051,276	0	2,051,276	2,481,223	2,339,322	94.3%	141,901	141,901
2	District of Col	1,819,388	2,261,095	0	2,261,095	4,080,483	3,144,829	77.1%	935,654	935,654
3	Florida	6,452,312	32,208,251	0	32,208,251	38,660,563	34,168,442	88.4%	4,492,121	4,492,121
3	Georgia	3,401,126	15,876,688	0	15,876,688	19,277,814	17,486,974	90.7%	1,790,840	1,790,840
6	Hawaii	2,010,005	3,018,475	0	3,018,475	5,028,480	2,846,142	56.6%	2,182,338	2,182,338
6	Idaho	646,198	2,875,823	0	2,875,823	3,522,021	3,272,044	92.9%	249,977	249,977
5	Illinois	7,909,374	35,297,361	0	35,297,361	43,206,735	36,385,224	84.2%	6,821,511	6,821,511
5	Indiana	3,255,474	12,447,544	0	12,447,544	15,703,018	12,580,369	80.1%	3,122,649	3,122,649
5	Iowa	584,634	3,771,642	0	3,771,642	4,356,276	3,346,087	76.8%	1,010,189	1,010,178
5	Kansas	2,664,689	5,704,456	0	5,704,456	8,369,145	6,342,108	75.8%	2,027,037	2,027,037
3	Kentucky	4,276,626	10,939,025	0	10,939,025	15,215,651	10,760,171	70.7%	4,455,480	4,455,480
4	Louisiana	7,583,720	15,034,089	0	15,034,089	22,617,809	18,355,239	81.2%	4,262,570	4,262,570
1	Maine	177,429	2,264,308	0	2,264,308	2,441,737	2,197,176	90.0%	244,561	244,561
2	Maryland	1,704,013	8,036,282	0	8,036,282	9,740,295	7,648,890	78.5%	2,091,405	2,091,405
1	Massachusetts	1,903,782	12,643,851	0	12,643,851	14,547,633	12,069,427	83.0%	2,478,206	2,478,206
5	Michigan	3,025,935	28,401,694	0	28,401,694	31,427,629	28,249,614	89.9%	3,178,015	3,178,015
5	Minnesota	242,581	7,298,148	0	7,298,148	7,540,729	7,238,127	96.0%	302,602	302,602
3	Mississippi	2,404,771	9,691,549	0	9,691,549	12,096,320	9,892,460	81.8%	2,203,860	2,203,860
5	Missouri	2,655,817	12,424,566	0	12,424,566	15,080,383	13,218,216	87.7%	1,862,167	1,862,167
4	Montana	451,731	2,203,928	0	2,203,928	2,655,659	2,309,355	87.0%	346,304	346,304
5	Nebraska	804,265	2,115,577	0	2,115,577	2,919,842	2,236,600	76.6%	683,242	683,242
6	Nevada	1,560,504	3,937,202	0	3,937,202	5,497,706	5,497,706	100.0%	0	0
1	New Hampshire	1,205,490	1,876,277	0	1,876,277	3,081,767	2,104,293	68.3%	977,474	977,474
1	New Jersey	7,206,127	19,399,815	0	19,399,815	26,605,942	19,732,235	74.2%	6,873,707	6,873,707
4	New Mexico	2,476,418	4,954,905	0	4,954,905	7,431,323	5,317,169	71.6%	2,114,154	2,114,154
1	New York	12,954,197	52,994,697	0	52,994,697	65,948,894	57,645,221	87.4%	8,303,673	8,303,673
3	North Carolina	7,823,183	22,926,263	0	22,926,263	30,749,446	23,177,911	75.4%	7,571,535	7,571,535
4	North Dakota	168,798	1,876,277	0	1,876,277	2,045,075	1,828,574	89.4%	216,501	216,501
5	Ohio	16,320,784	29,855,563	0	29,855,563	46,176,347	28,709,700	62.2%	17,466,647	17,466,647
4	Oklahoma	2,088,140	7,090,087	0	7,090,087	9,178,227	7,179,138	78.2%	1,999,089	1,930,409
6	Oregon	2,443,459	12,822,963	0	12,822,963	15,266,422	13,404,997	87.8%	1,861,425	1,861,425
2	Pennsylvania	3,704,605	30,485,866	0	30,485,866	34,190,471	29,185,977	85.4%	5,004,494	5,004,494
1	Puerto Rico	4,297,391	30,178,677	0	30,178,677	34,476,068	29,870,753	86.6%	4,605,315	4,605,315
1	Rhode Island	227,438	2,406,873	0	2,406,873	2,634,311	2,332,960	88.6%	301,351	301,351
3	South Carolina	2,221,939	11,055,706	0	11,055,706	13,277,645	11,913,113	89.7%	1,364,532	1,364,532
4	South Dakota	876,679	1,876,277	0	1,876,277	2,752,956	2,391,497	86.9%	361,459	361,459
3	Tennessee	3,653,739	12,630,389	0	12,630,389	16,284,128	13,290,081	81.6%	2,994,047	2,994,047
4	Texas	11,518,898	64,315,465	0	64,315,465	75,834,363	67,224,797	88.6%	8,609,566	8,609,566
4	Utah	941,878	4,792,441	0	4,792,441	5,734,319	4,627,502	80.7%	1,106,817	1,106,817
1	Vermont	8,637	1,876,277	0	1,876,277	1,884,914	1,882,170	99.9%	2,744	2,744
2	Virginia	3,769,302	10,007,626	0	10,007,626	13,776,928	10,573,432	76.7%	3,203,496	3,203,496
6	Washington	4,745,456	20,029,001	0	20,029,001	24,774,457	21,243,111	85.7%	3,531,346	3,531,346
2	West Virginia	0	5,798,200	0	5,798,200	5,798,200	5,459,683	94.2%	338,517	338,517
5	Wisconsin	2,223,717	11,588,394	0	11,588,394	13,812,111	11,190,857	81.0%	2,621,254	2,598,912
4	Wyoming	500,851	1,876,277	0	1,876,277	2,377,128	2,187,272	92.0%	189,856	189,856

U. S. Department of Labor  
Employment and Training Administration  
**State WIA Formula Spending for Program Year 2004 per 6/30/05 Reports as of 8/29/05**  
**WIA SF-269 Report: Local Dislocated Workers**

Reg	State	Unexpended Carry-In To PY 2004	PY 2004 Availability			Total Available	Expenditures		Unexpended Balance 6/30/05	Unexpended Carry-Out To PY 2005
			New PY 2004 Funds				\$ 7/1/04 - 6/30/05	as % of Total Available		
			PY 2004	FY 2005	Total					
	<b>Total</b>	<b>\$195,926,639</b>	<b>\$183,370,885</b>	<b>\$464,077,850</b>	<b>\$647,448,735</b>	<b>\$843,375,374</b>	<b>\$652,270,850</b>	<b>77.3%</b>	<b>\$191,104,524</b>	<b>\$191,089,009</b>
3	Alabama	4,356,871	1,560,317	2,460,913	4,021,230	8,378,101	6,898,624	82.3%	1,479,477	1,479,477
6	Alaska	2,891,542	797,367	2,031,417	2,828,784	5,720,326	3,652,979	63.9%	2,067,347	2,067,347
6	Arizona	4,029,146	3,049,502	7,889,172	10,938,674	14,967,820	8,306,053	55.5%	6,661,767	6,661,767
4	Arkansas	2,059,126	1,111,709	3,098,208	4,209,917	6,269,043	4,811,296	76.7%	1,457,747	1,457,747
6	California	16,277,243	27,484,773	64,312,009	91,796,782	108,074,025	90,248,400	83.5%	17,825,625	17,825,625
4	Colorado	2,317,427	3,030,661	5,087,361	8,118,022	10,435,449	7,522,293	72.1%	2,913,156	2,913,156
1	Connecticut	587,070	1,364,673	3,236,719	4,601,392	5,188,462	4,400,108	84.8%	788,354	788,354
2	Delaware	383,949	263,426	691,477	954,903	1,338,852	914,624	68.3%	424,228	424,228
2	District of Col	1,785,850	512,070	1,254,747	1,766,817	3,552,667	2,939,149	82.7%	613,518	613,518
3	Florida	6,133,950	6,149,116	20,278,982	26,428,098	32,562,048	26,091,281	80.1%	6,470,767	6,470,767
3	Georgia	5,240,200	3,457,625	8,638,044	12,095,669	17,335,869	12,131,415	70.0%	5,204,454	5,204,454
6	Hawaii	1,359,602	527,160	1,432,211	1,959,371	3,318,973	2,494,174	75.1%	824,799	824,799
6	Idaho	105,384	686,175	1,775,515	2,461,690	2,567,074	2,567,074	100.0%	0	0
5	Illinois	5,083,014	8,178,614	25,300,727	33,479,341	38,562,355	31,238,454	81.0%	7,323,901	7,323,901
5	Indiana	1,999,322	2,656,747	6,618,891	9,275,638	11,274,960	9,377,004	83.2%	1,897,956	1,897,956
5	Iowa	668,701	1,002,268	2,642,801	3,645,069	4,313,770	3,566,737	82.7%	747,033	731,518
5	Kansas	1,140,912	1,011,988	2,598,991	3,610,979	4,751,891	2,904,063	61.1%	1,847,828	1,847,828
3	Kentucky	4,650,261	1,947,930	4,704,012	6,651,942	11,302,203	7,091,521	62.7%	4,210,682	4,210,682
4	Louisiana	10,415,414	2,712,801	6,699,680	9,412,481	19,827,895	15,058,576	75.9%	4,769,319	4,769,319
1	Maine	143,962	415,682	1,110,227	1,525,909	1,669,871	1,485,103	88.9%	184,768	184,768
2	Maryland	1,518,080	1,680,526	5,318,835	6,999,361	8,517,441	6,969,739	81.8%	1,547,702	1,547,702
1	Massachusetts	1,031,090	3,835,191	9,308,801	13,143,992	14,175,082	12,372,434	87.3%	1,802,648	1,802,648
5	Michigan	8,625,332	9,127,811	24,498,417	33,626,228	42,251,560	31,800,328	75.3%	10,451,232	10,451,232
5	Minnesota	707,106	1,702,441	4,025,536	5,727,977	6,435,083	5,715,086	88.8%	719,997	719,997
3	Mississippi	5,095,869	2,026,942	7,259,008	9,285,950	14,381,819	10,518,284	73.1%	3,863,535	3,863,535
5	Missouri	1,868,869	2,882,450	7,402,911	10,285,361	12,154,211	10,410,348	85.7%	1,743,863	1,743,863
4	Montana	165,137	245,394	625,179	870,573	1,035,710	901,150	87.0%	134,560	134,560
5	Nebraska	1,257,344	539,403	1,253,307	1,792,710	3,050,054	1,946,937	63.8%	1,103,117	1,103,117
6	Nevada	1,543,948	1,428,977	2,025,150	3,454,127	4,998,075	4,501,217	90.1%	496,858	496,858
1	New Hampshire	206,626	545,320	1,626,352	2,171,672	2,378,298	1,828,896	76.9%	549,402	549,402
1	New Jersey	8,860,187	6,467,958	14,008,446	20,476,404	29,336,591	20,814,294	70.9%	8,522,297	8,522,297
4	New Mexico	(1,580,507)	868,035	1,929,284	2,797,319	1,216,812	148,627	12.2%	1,068,185	1,068,185
1	New York	15,396,614	11,095,666	34,244,334	45,340,000	60,736,614	47,533,067	78.3%	13,203,547	13,203,547
3	North Carolina	12,014,824	8,776,605	21,528,900	30,305,505	42,320,329	25,255,112	59.7%	17,065,217	17,065,217
4	North Dakota	55,765	207,749	528,521	736,270	792,035	708,413	89.4%	83,622	83,622
5	Ohio	12,386,934	6,359,710	15,474,836	21,834,546	34,221,480	19,654,975	57.4%	14,566,505	14,566,505
4	Oklahoma	1,302,689	1,343,159	3,033,091	4,376,250	5,678,939	3,764,513	66.3%	1,914,426	1,914,426
6	Oregon	2,216,017	3,960,864	10,229,331	14,190,195	16,406,212	13,817,673	84.2%	2,588,539	2,588,539
2	Pennsylvania	5,538,010	7,145,591	17,926,583	25,072,174	30,610,184	24,750,553	80.9%	5,859,631	5,859,631
1	Puerto Rico	8,393,193	4,619,665	11,902,883	16,522,548	24,915,741	19,161,385	76.9%	5,754,356	5,754,356
1	Rhode Island	263,703	521,932	1,329,703	1,851,635	2,115,338	1,546,134	73.1%	569,204	569,204
3	South Carolina	2,863,299	2,624,307	6,648,418	9,272,725	12,136,024	10,313,344	85.0%	1,822,680	1,822,680
4	South Dakota	215,950	202,359	510,453	712,812	928,762	579,030	62.3%	349,732	349,732
3	Tennessee	3,626,816	2,202,953	5,546,364	7,749,317	11,376,133	7,952,394	69.9%	3,423,739	3,423,739
4	Texas	13,429,665	20,027,327	43,272,870	63,300,197	76,729,862	68,038,216	88.7%	8,691,646	8,691,646
4	Utah	1,982,441	1,500,613	3,738,657	5,239,270	7,221,711	6,413,938	88.8%	807,773	807,773
1	Vermont	(10,883)	209,424	738,228	947,652	936,769	923,239	98.6%	13,530	13,530
2	Virginia	3,263,911	1,987,877	5,133,850	7,121,727	10,385,638	7,600,294	73.2%	2,785,344	2,785,344
6	Washington	7,463,893	7,053,960	20,255,221	27,309,181	34,773,074	26,122,453	75.1%	8,650,621	8,650,621
2	West Virginia	2,009,832	1,037,211	2,675,566	3,712,777	5,722,609	5,551,544	97.0%	171,065	171,065
5	Wisconsin	2,281,731	3,069,027	7,818,821	10,887,848	13,169,579	10,307,772	78.3%	2,861,807	2,861,807
4	Wyoming	304,227	153,834	397,890	551,724	855,951	650,533	76.0%	205,418	205,418