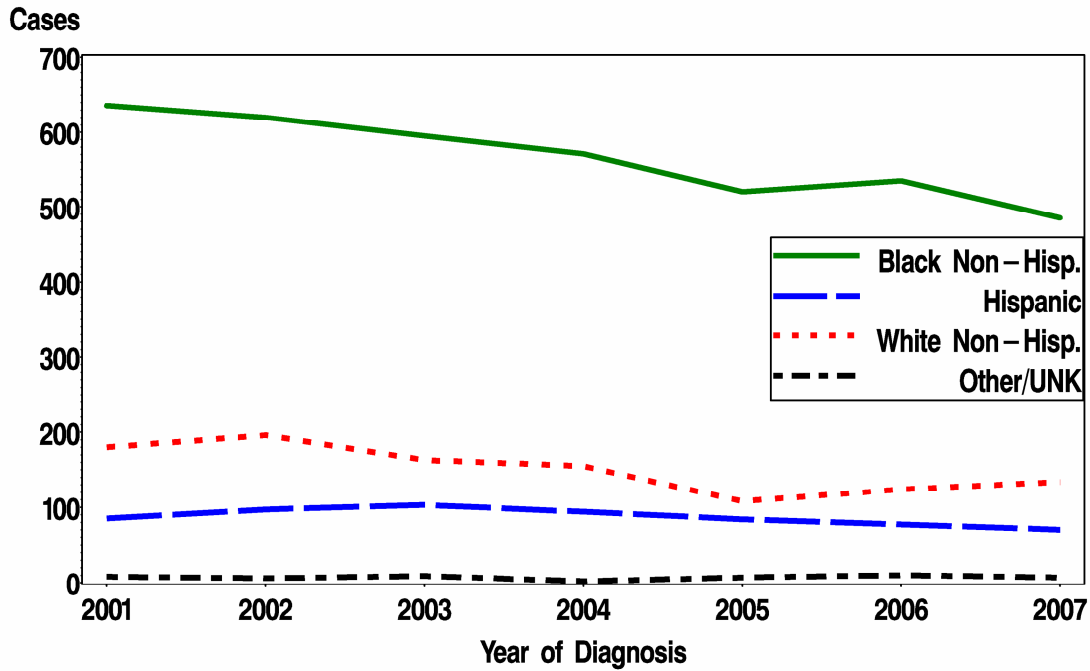
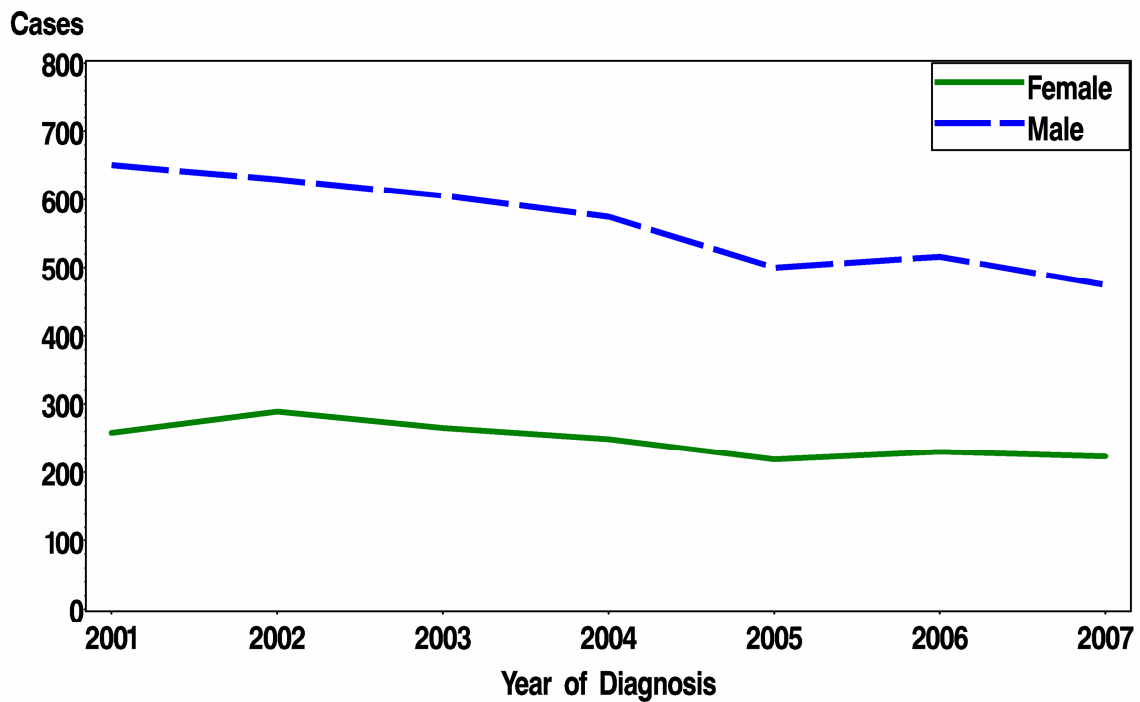


# Demographic Trends in Philadelphia 2001-2007

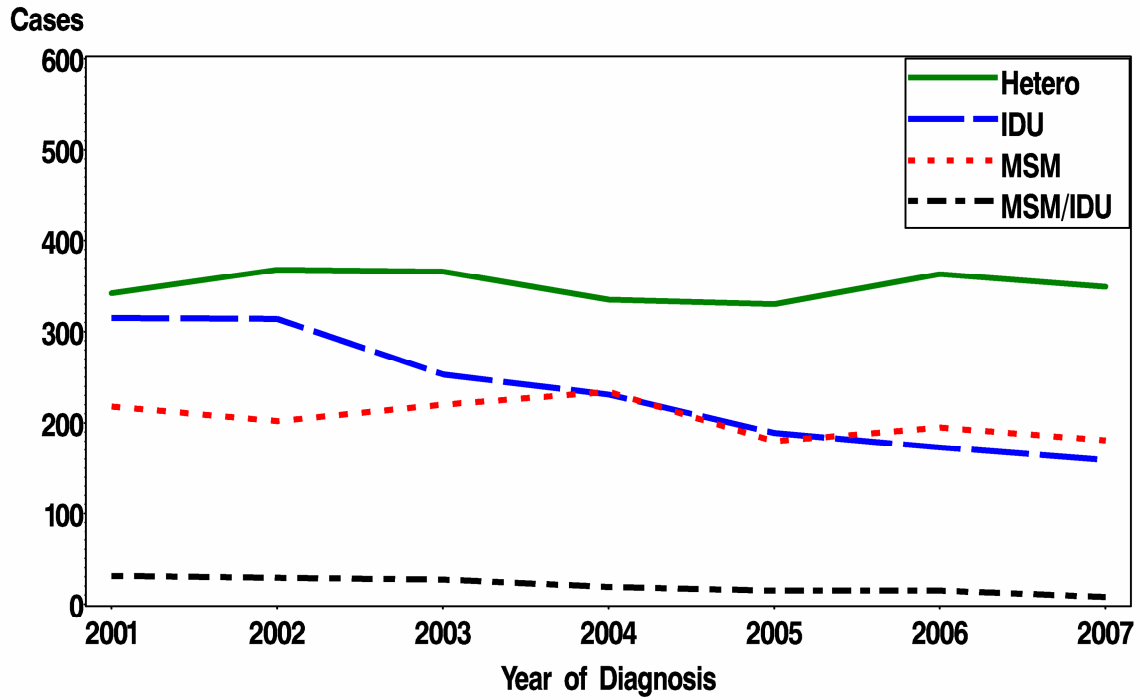
## Race/Ethnicity by Year of AIDS Diagnosis



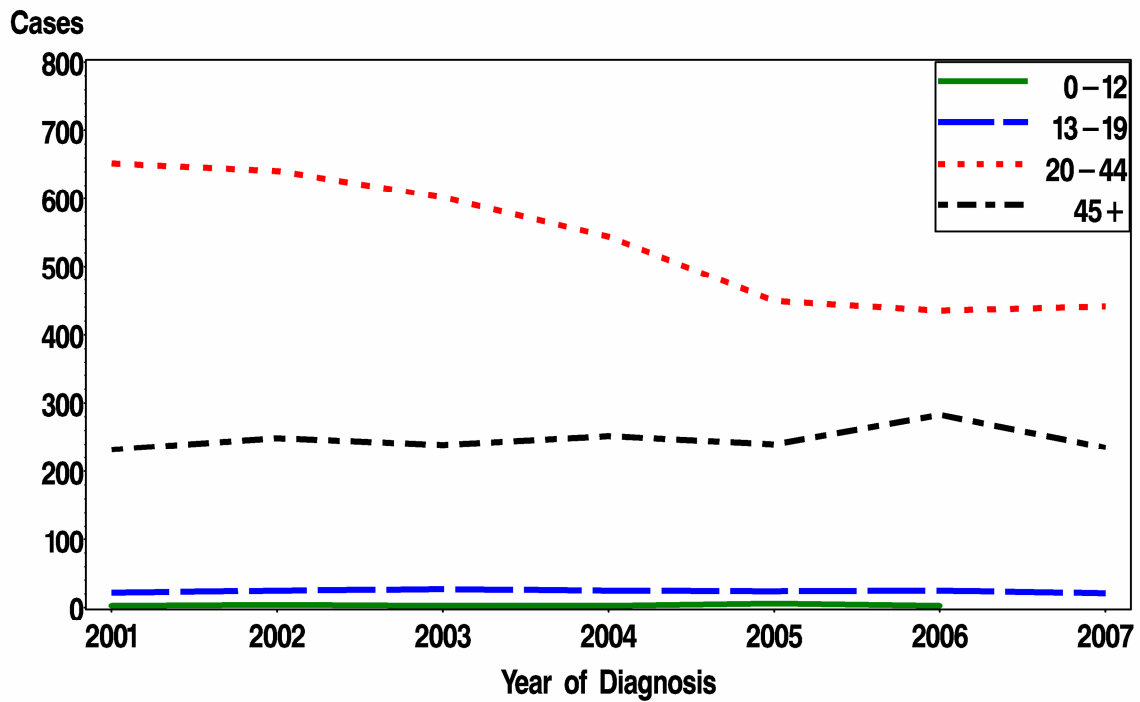
## Gender by Year of AIDS Diagnosis



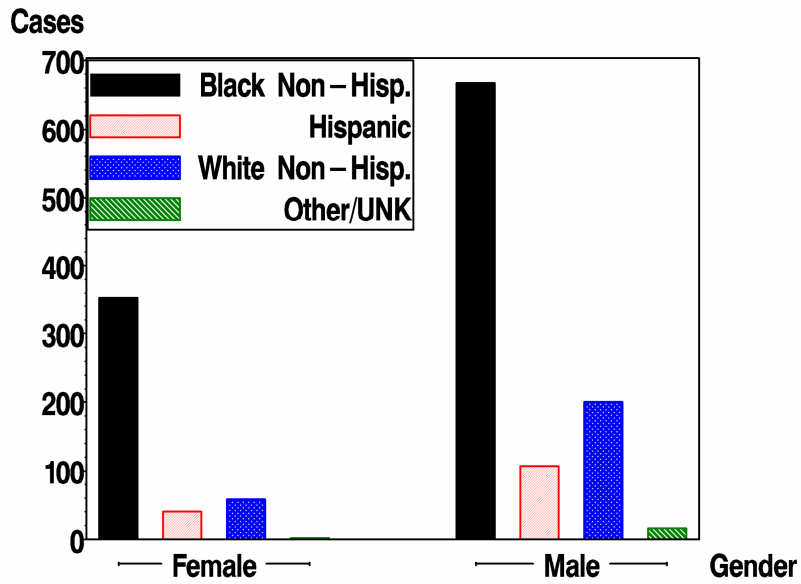
### Mode of Transmission by Year of AIDS Diagnosis



### Age at Diagnosis by Year of AIDS Diagnosis



## AIDS Cases by Race and Gender, 2006 and 2007



## Living AIDS Cases by Race and Mode of Transmission Philadelphia Residents, 2007

