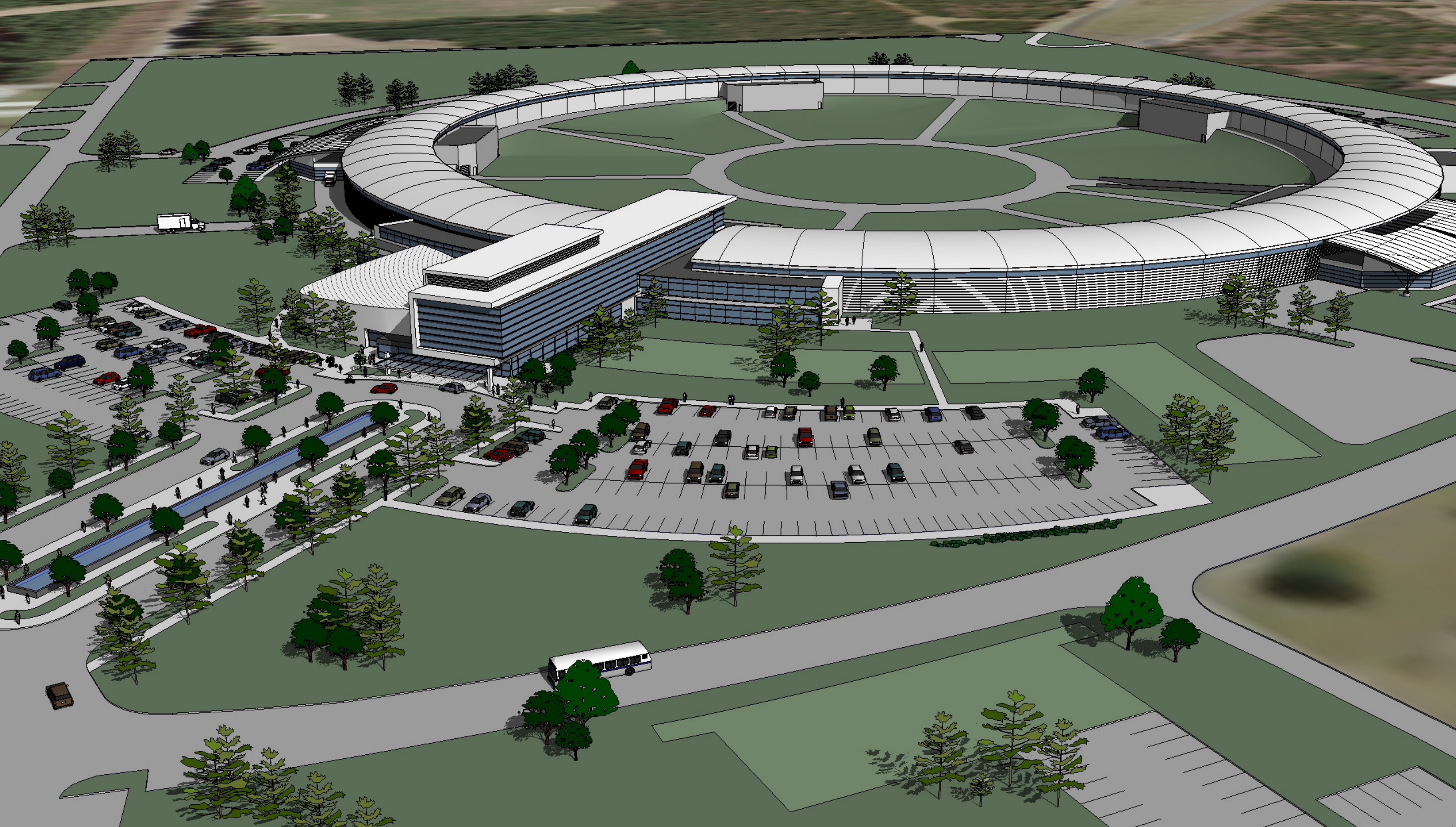


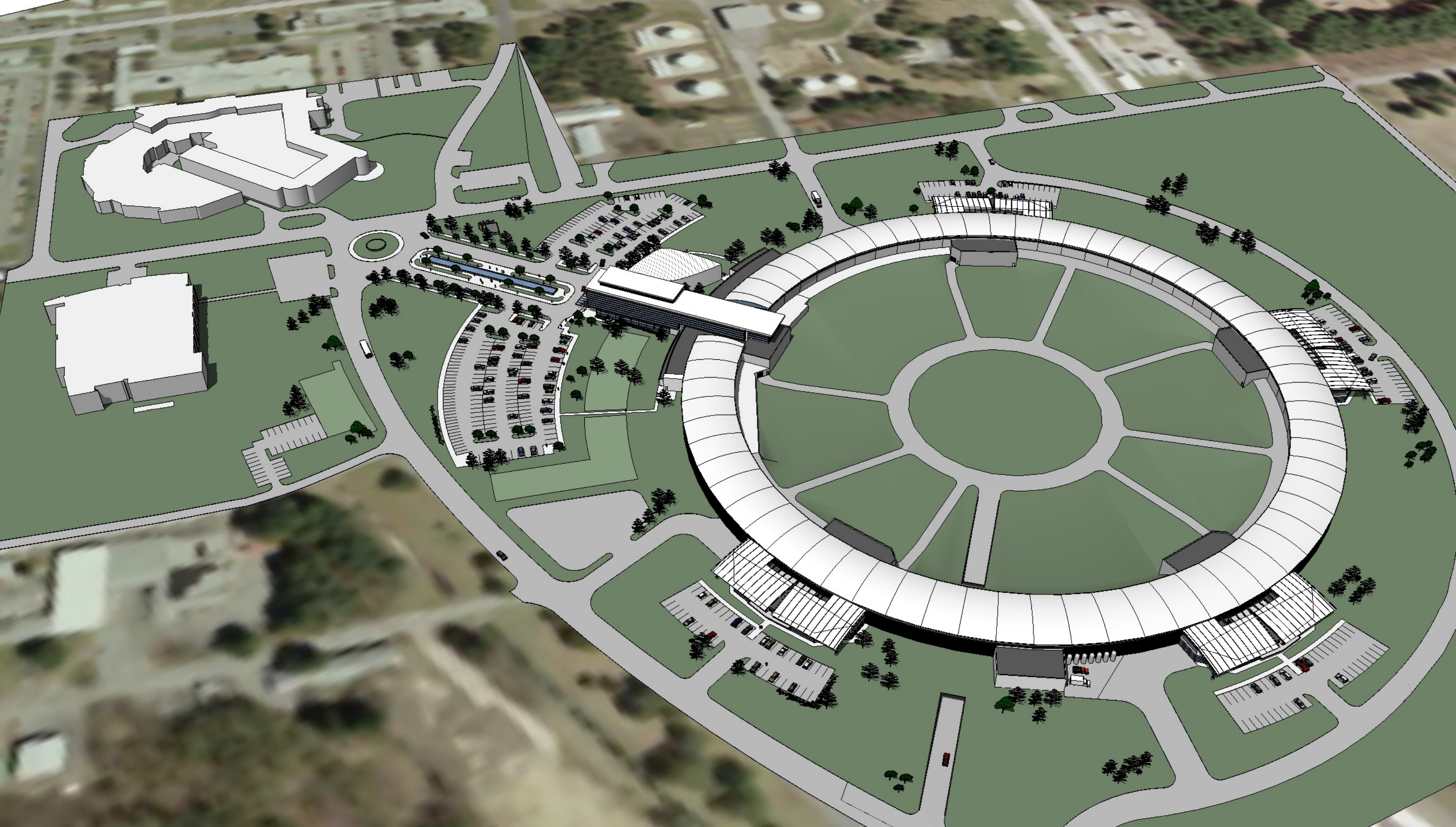
REFER TO BASE BUILDING TABLE



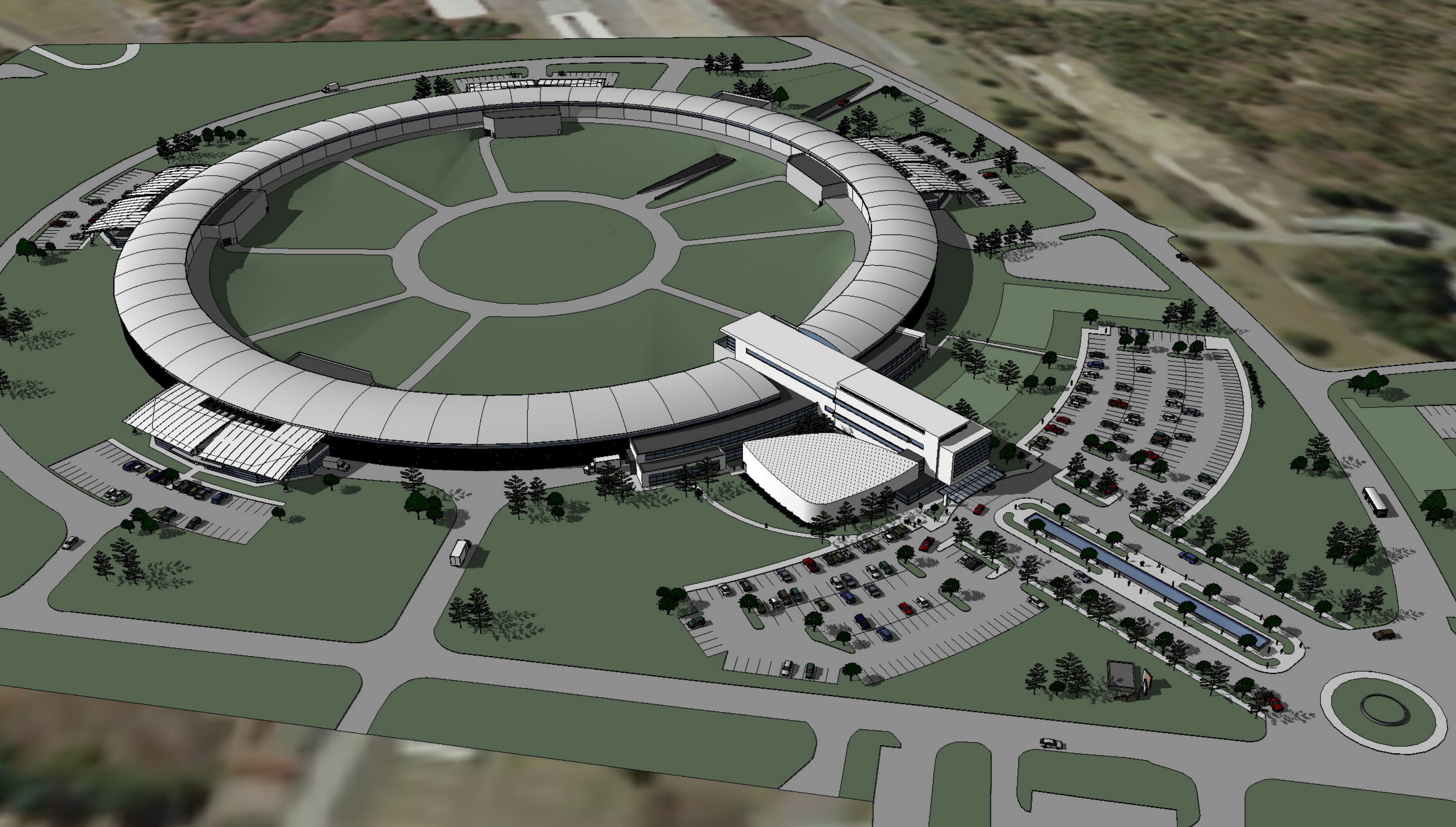




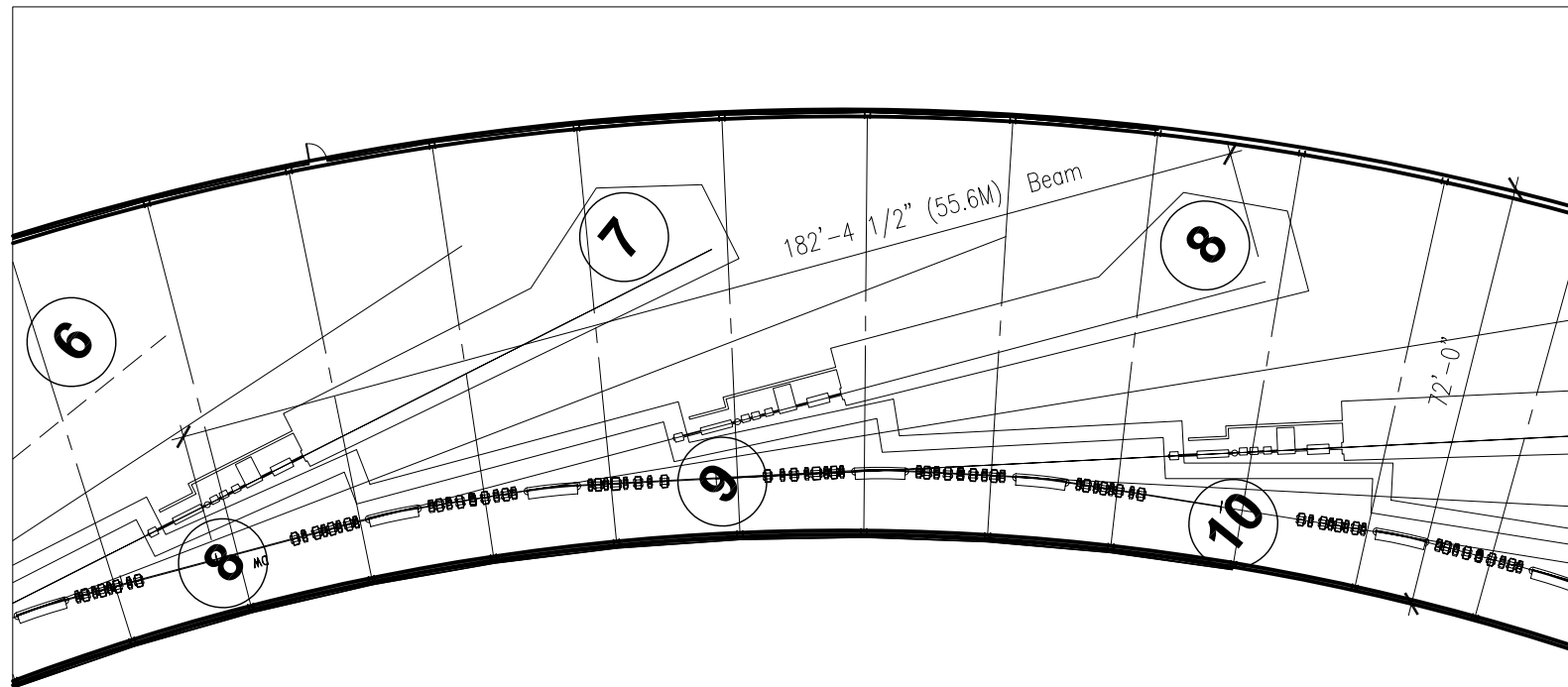












### BEAMLINE & HUTCH LAYOUT

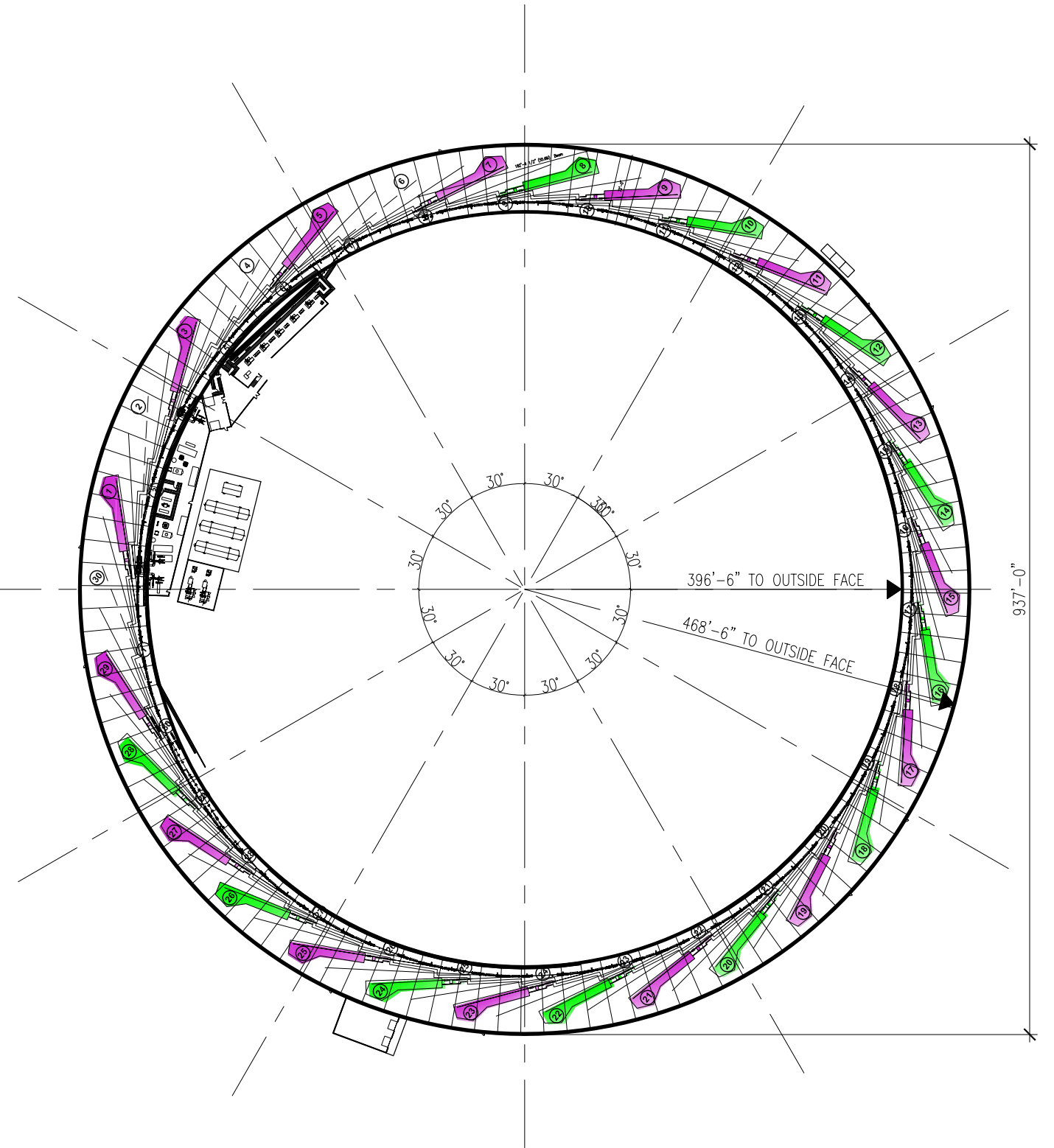
1/16" = 1'-0"

#### Square Footage:

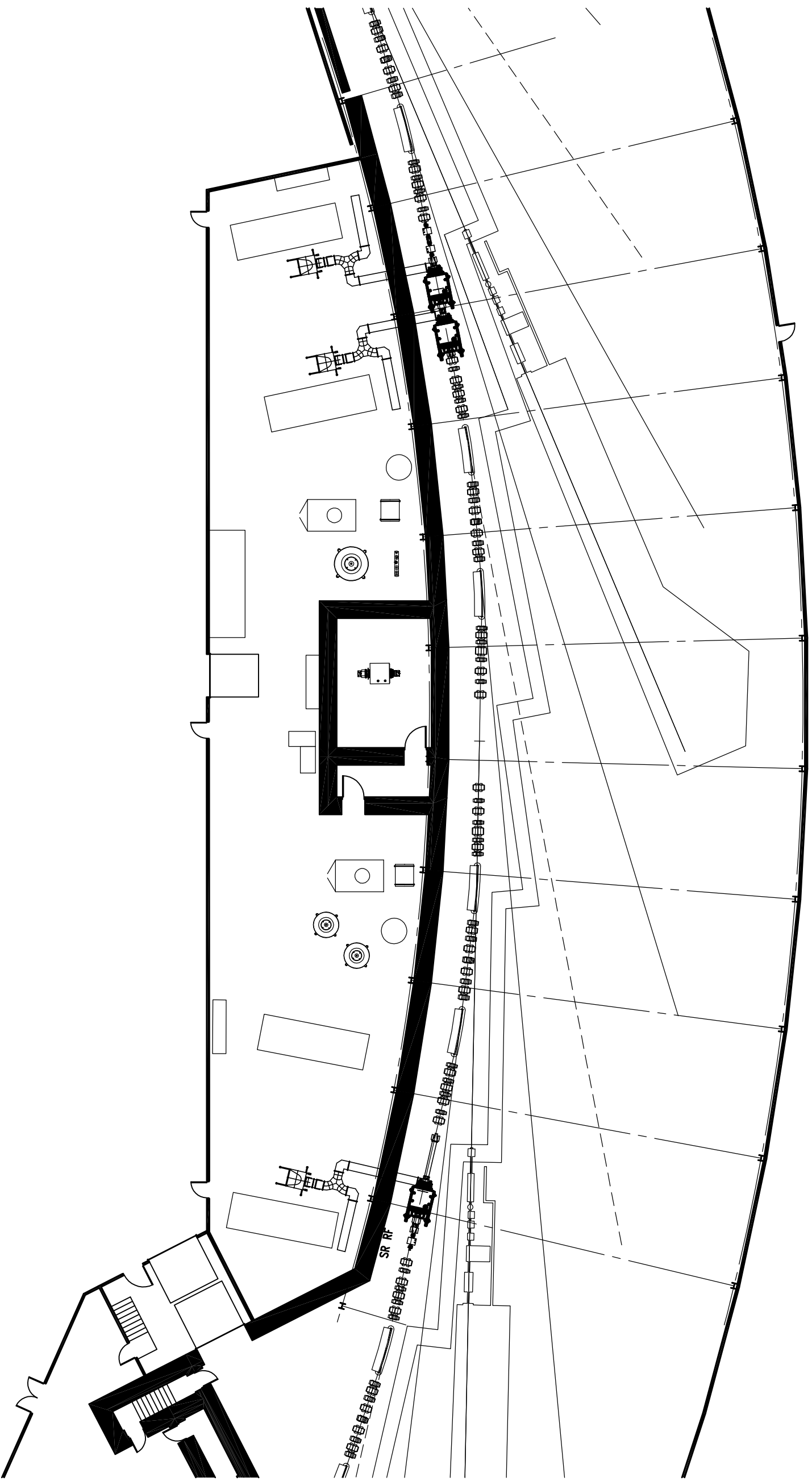
Tunnel = 50,368 Gross Sqft  
 Access Corridor & Experimental Floor = 144,621 Gross Sqft  
 Tunnel Mezzanine = 46,624 Net Sqft  
 Truck Dock/hazard. Chem. Stor.= 3,050 Gross Sqft

**Total Gross = 244,663 Sqft**

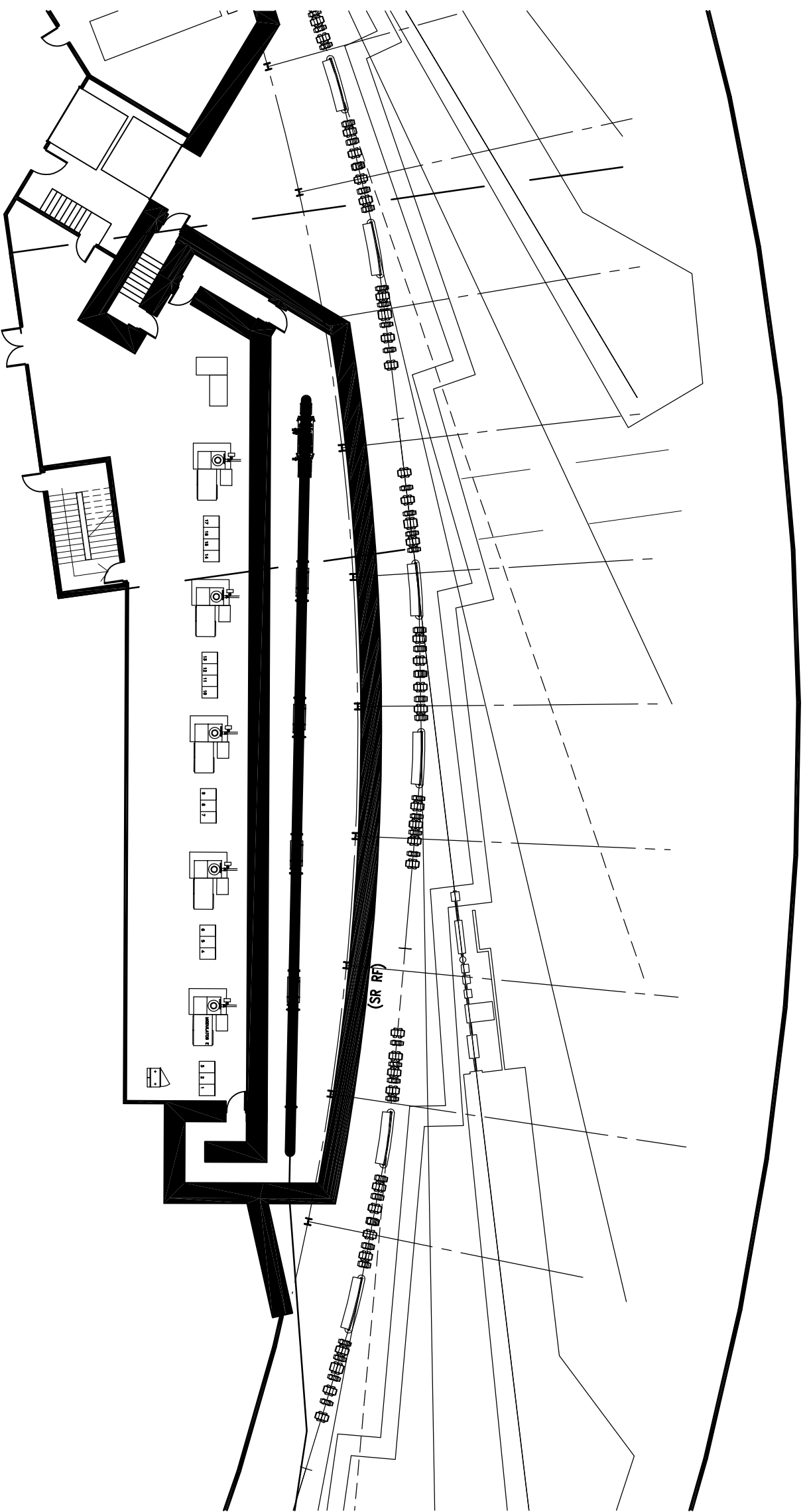
Access Corridor & Experimental Floor = 143,820 Net Sqft  
 Tunnel = 34,824 Net Sqft  
 Tunnel Mezzanine = 46,624 Net Sqft  
 Truck Dock/hazard. Chem. Stor.= 2,850 Gross Sqft



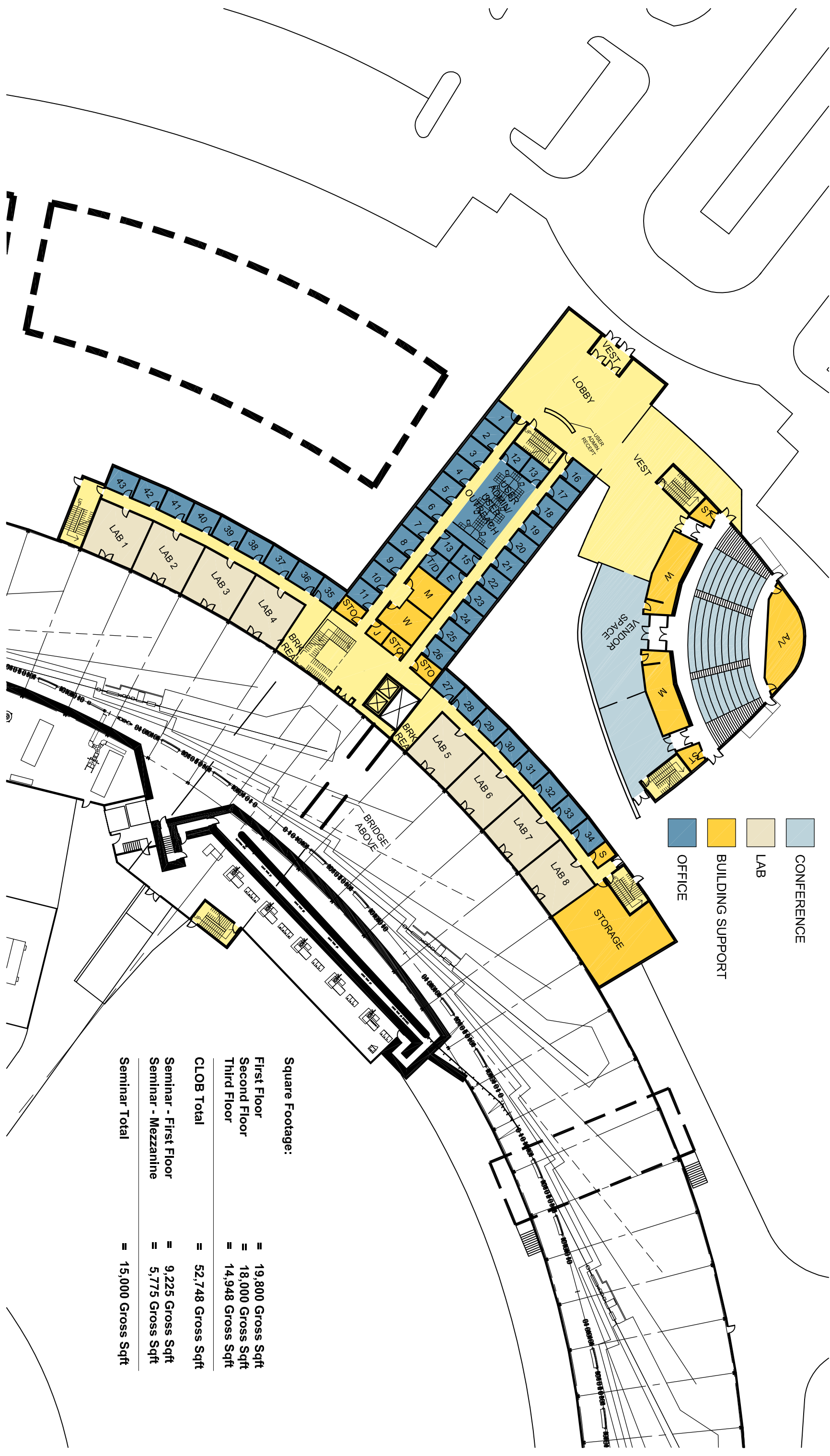












- CONFERENCE
- BUILDING SUPPORT
- LAB
- OFFICE

**Square Footage:**

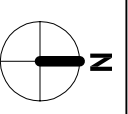
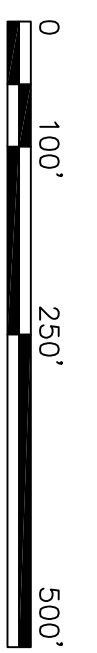
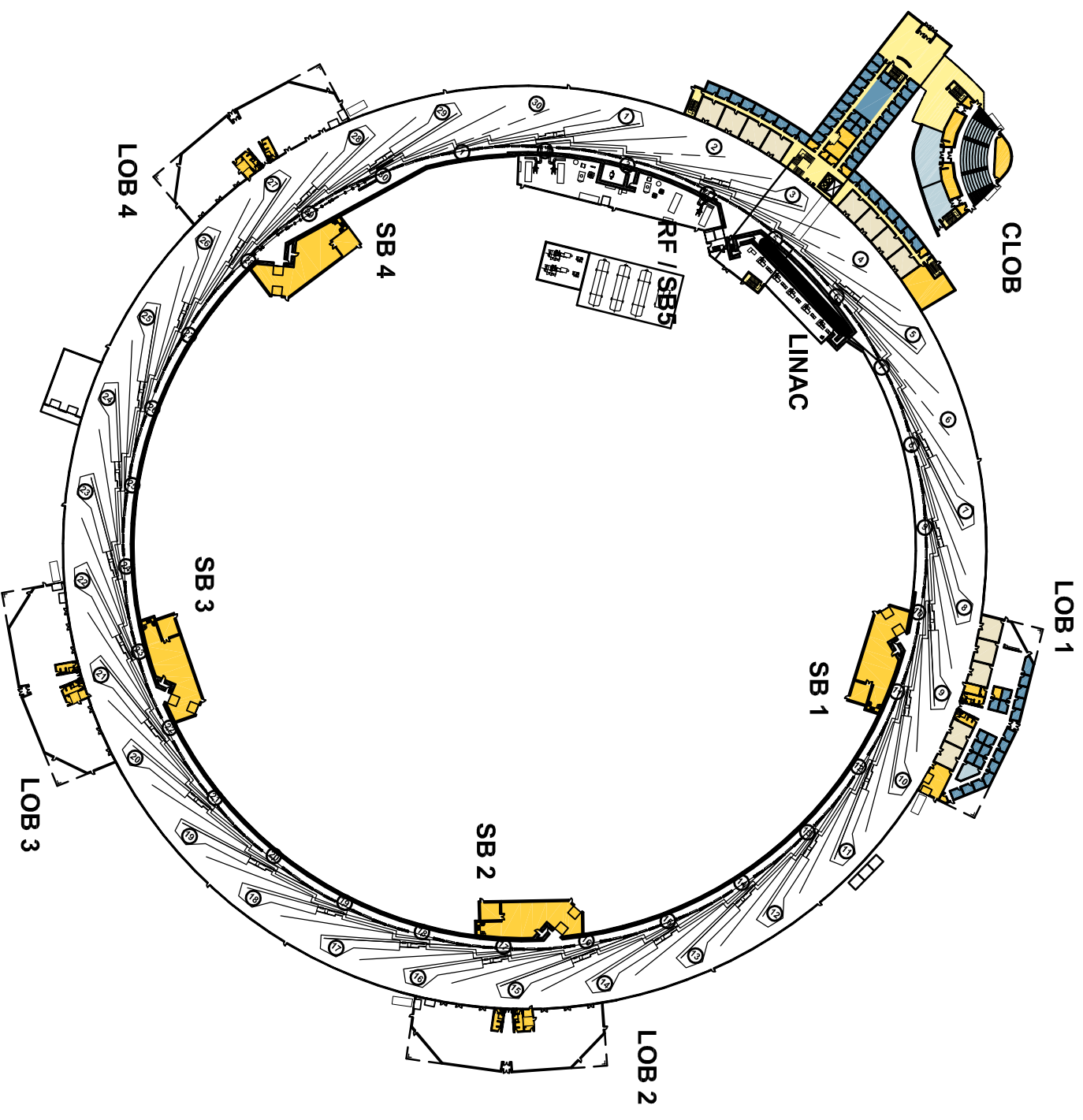
First Floor	=	19,800 Gross Sqft
Second Floor	=	18,000 Gross Sqft
Third Floor	=	14,948 Gross Sqft
<b>CLOB Total</b>	<b>=</b>	<b>52,748 Gross Sqft</b>
Seminar - First Floor	=	9,225 Gross Sqft
Seminar - Mezzanine	=	5,775 Gross Sqft
<b>Seminar Total</b>	<b>=</b>	<b>15,000 Gross Sqft</b>

**CENTRAL LAB OFFICE BUILDING - FIRST FLOOR**





Laboratory	NASF	GSF
Ring Building	228,118	244,663
Lab Office Buildings	30,480	44,000
Central Lab Office Building	50,340	67,448
Service Buildings	28,699	32,000
Linac / RF Building	15,862	21,000
<b>Total Square Feet</b>	<b>353,496</b>	<b>409,411</b>
<b>Building Efficiency</b>		<b>86%</b>
<b>Total, Building Gross Square Feet</b>		<b>409,411</b>



**OVERALL NSLS II FLOOR PLAN**

Final Conventional Facilities  
Conceptual Design Report

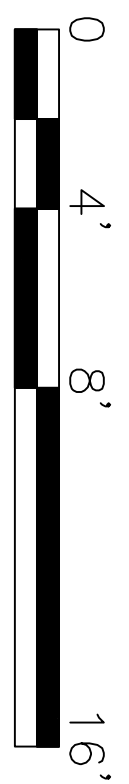
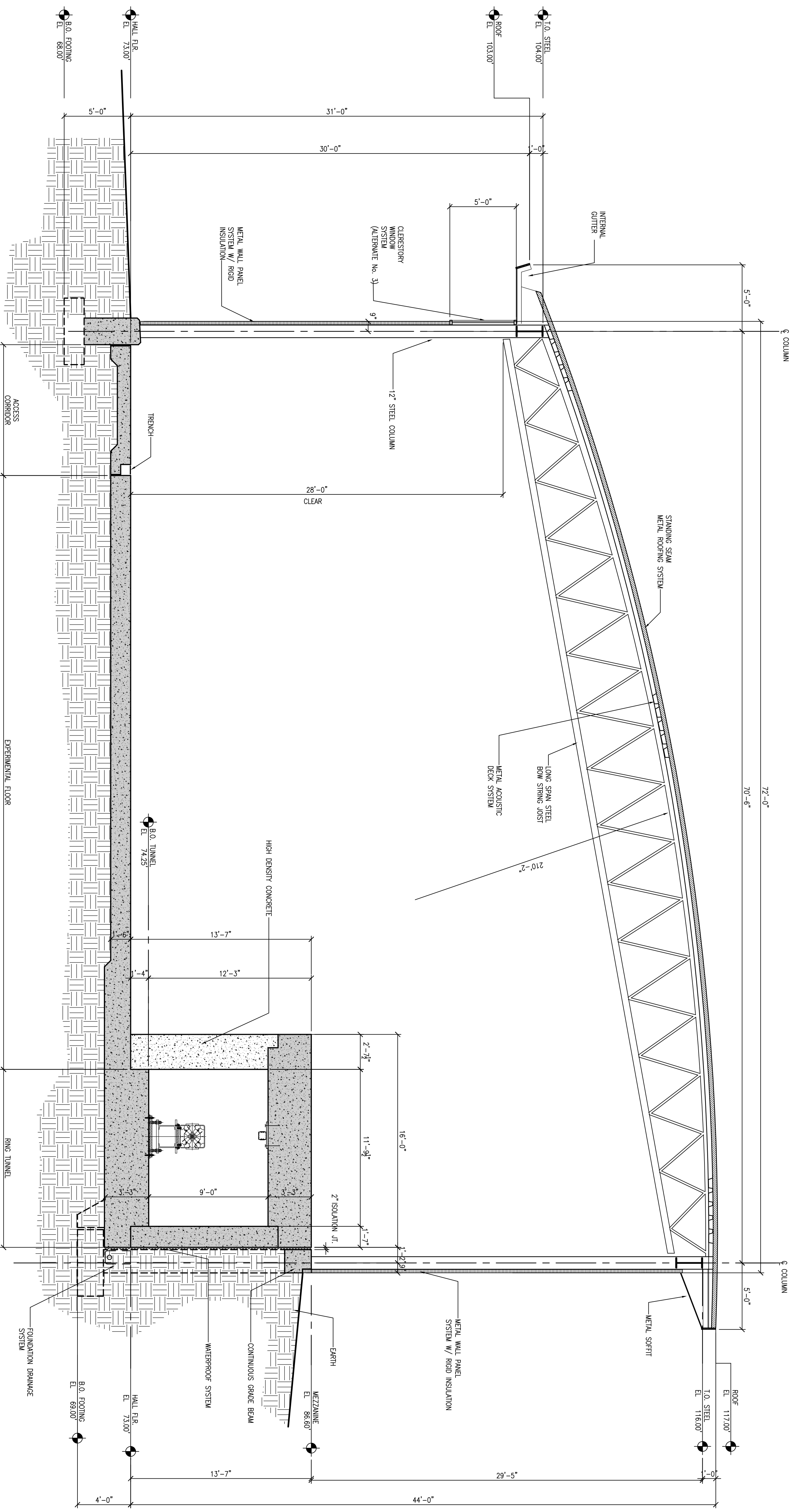


Brookhaven National Laboratory  
NSLS-2  
Upton, New York



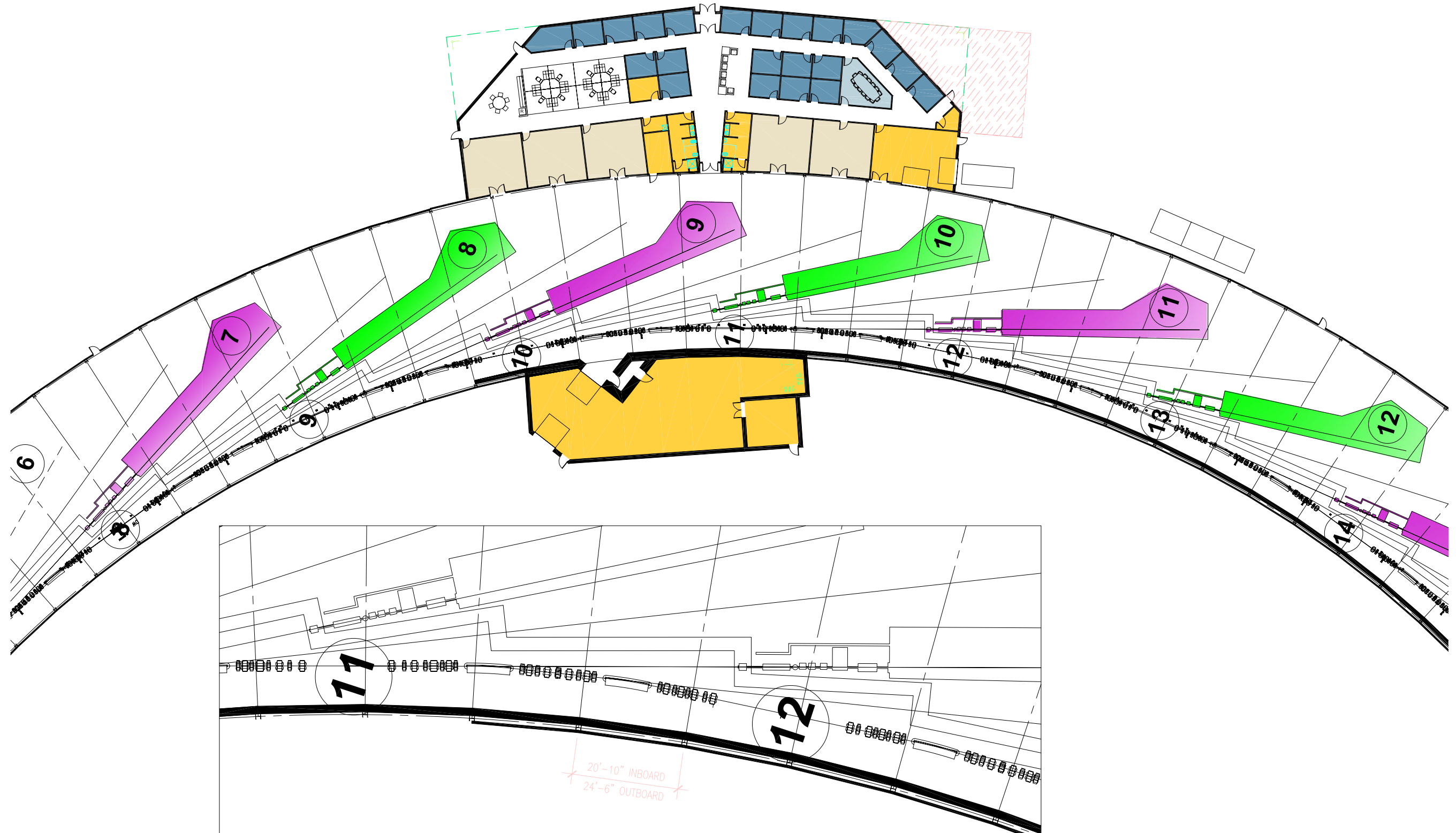
HDR Architecture, Inc.  
November 15, 2006



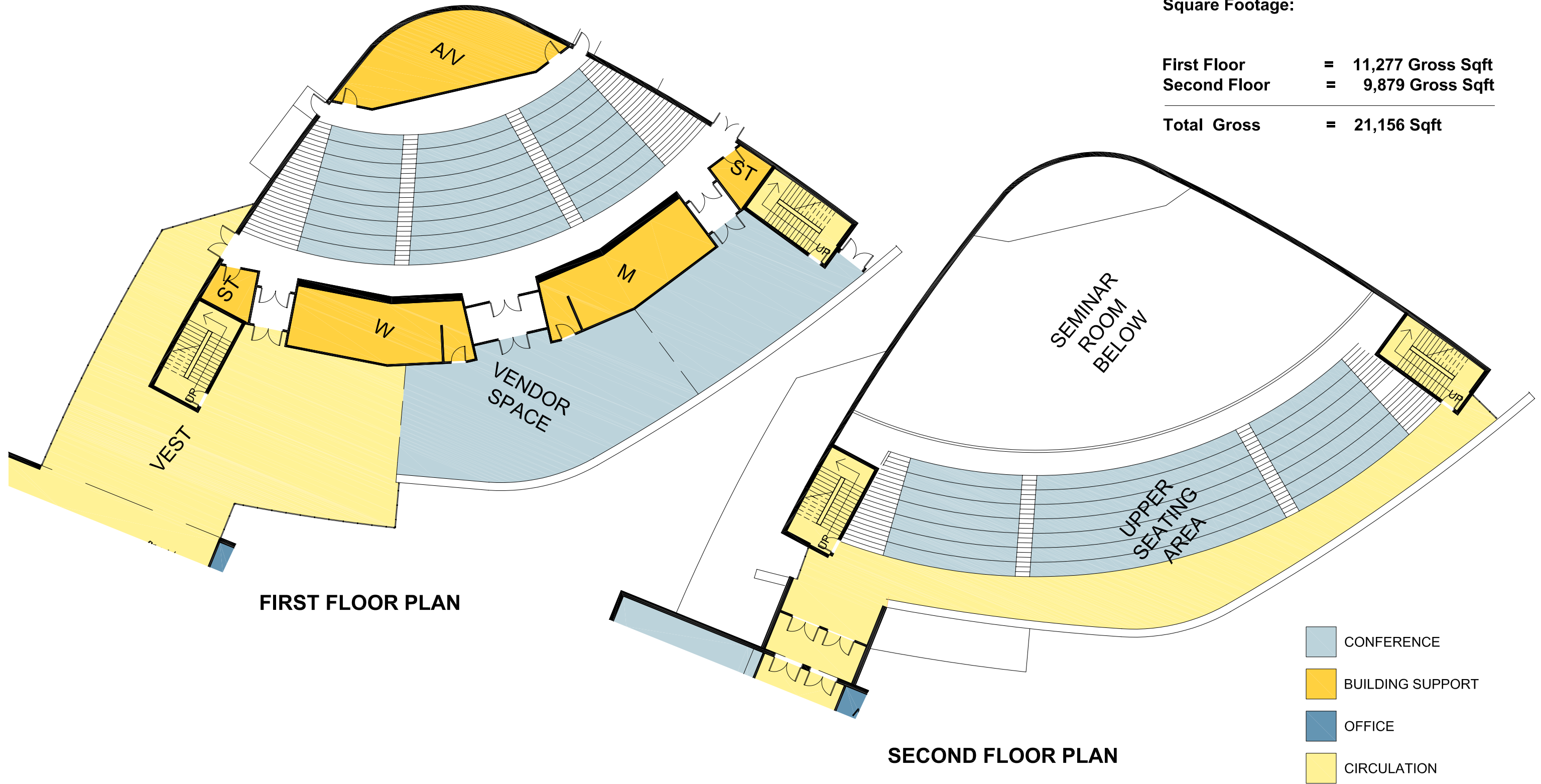


**TYPICAL SECTION AT RING BUILDING**





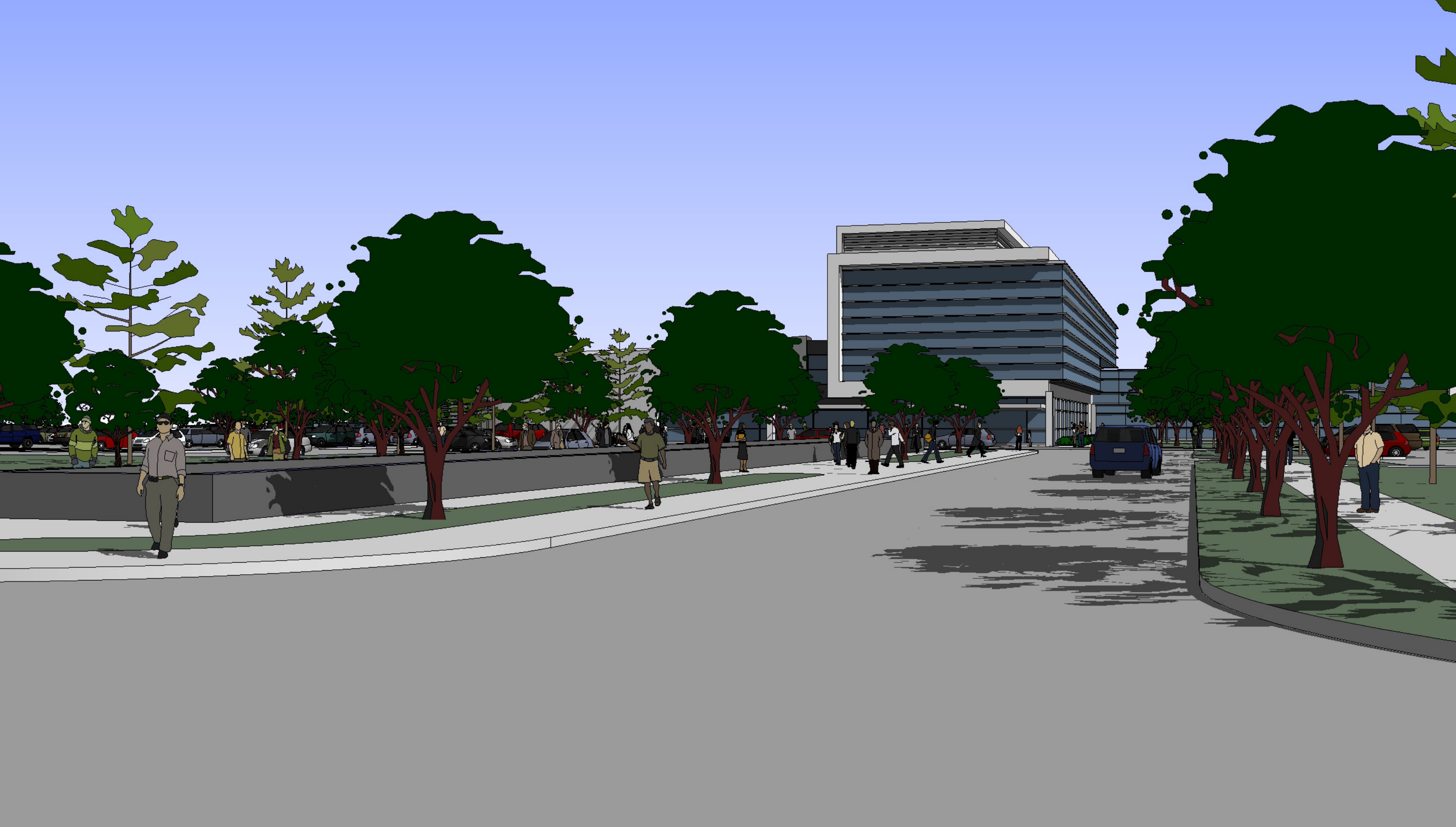




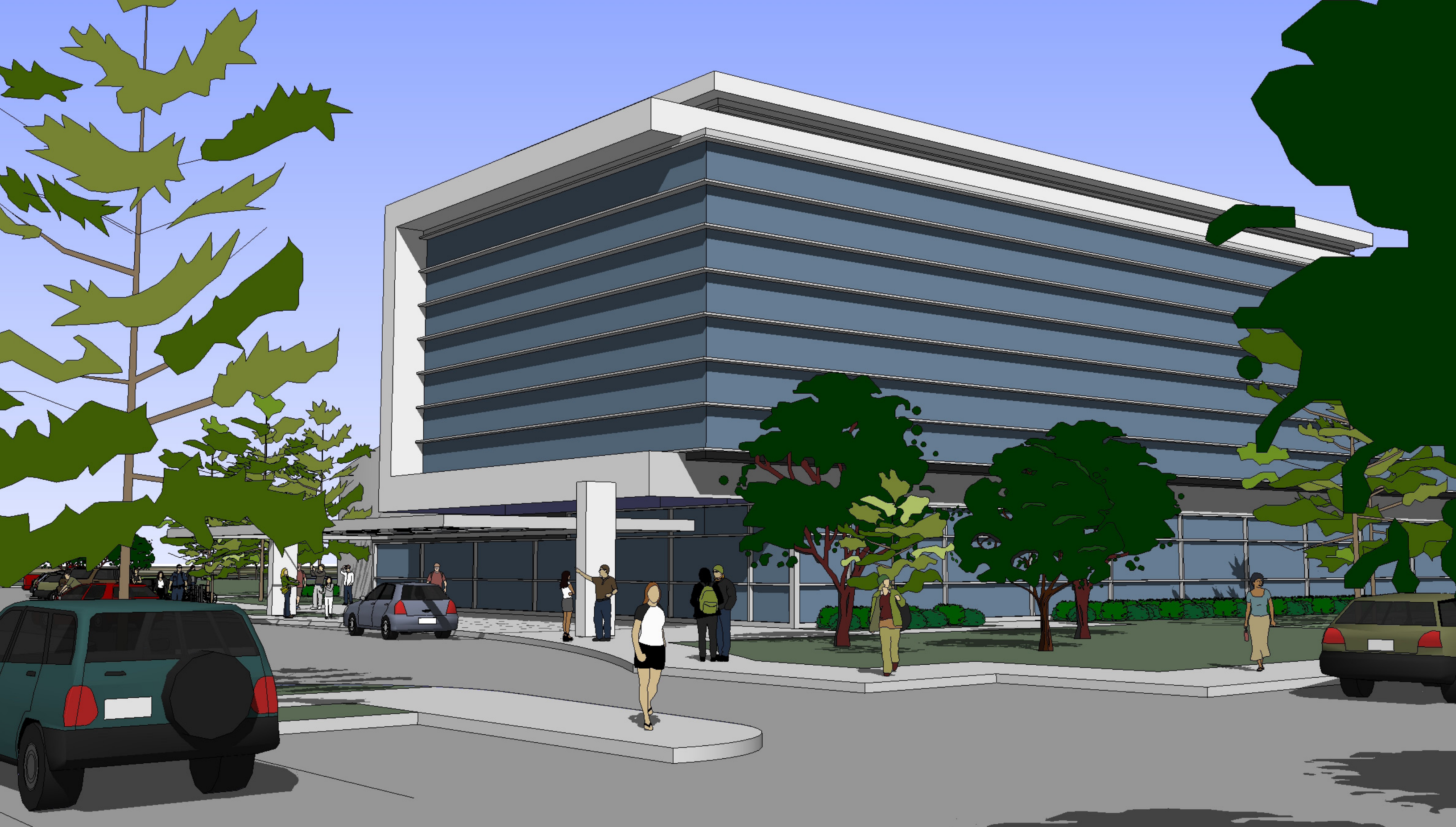
**Square Footage:**

First Floor	=	11,277 Gross Sqft
Second Floor	=	9,879 Gross Sqft
<b>Total Gross</b>	<b>=</b>	<b>21,156 Sqft</b>





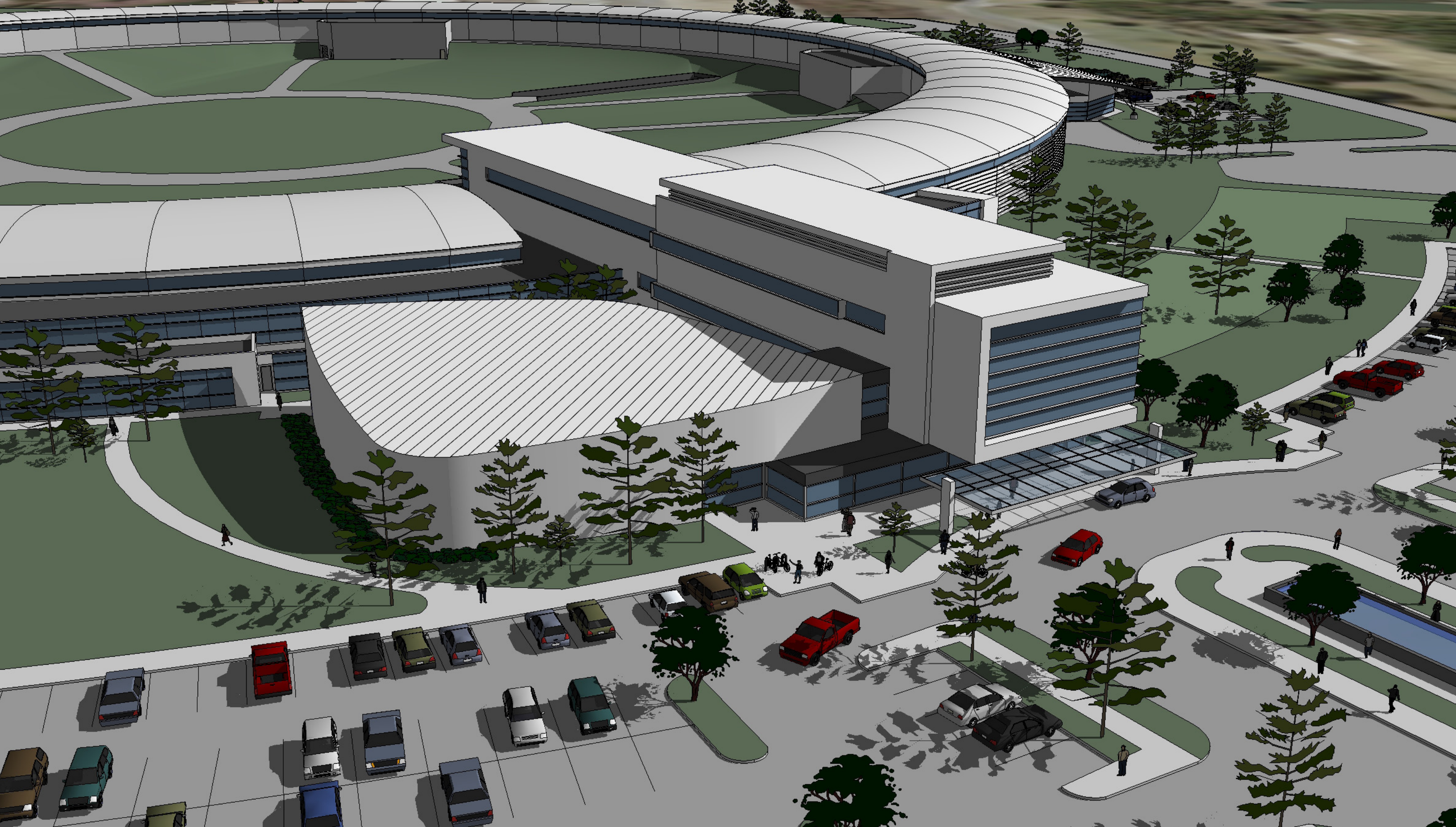
















- CONFERENCE
- LAB
- BUILDING SUPPORT
- OFFICE

**Square Footage:**

<b>First Floor</b>	= 11,000Gross Sqft
<b>Offices:</b>	
<b>Closed Offices</b>	= 22 (average 110 sqft)
<b>Open Offices</b>	= 8 (average 90 sqft)
<hr/>	
<b>Total Offices</b>	= 30
<b>Labs:</b>	
<b>Lab Modules</b>	= 10 (5 labs)

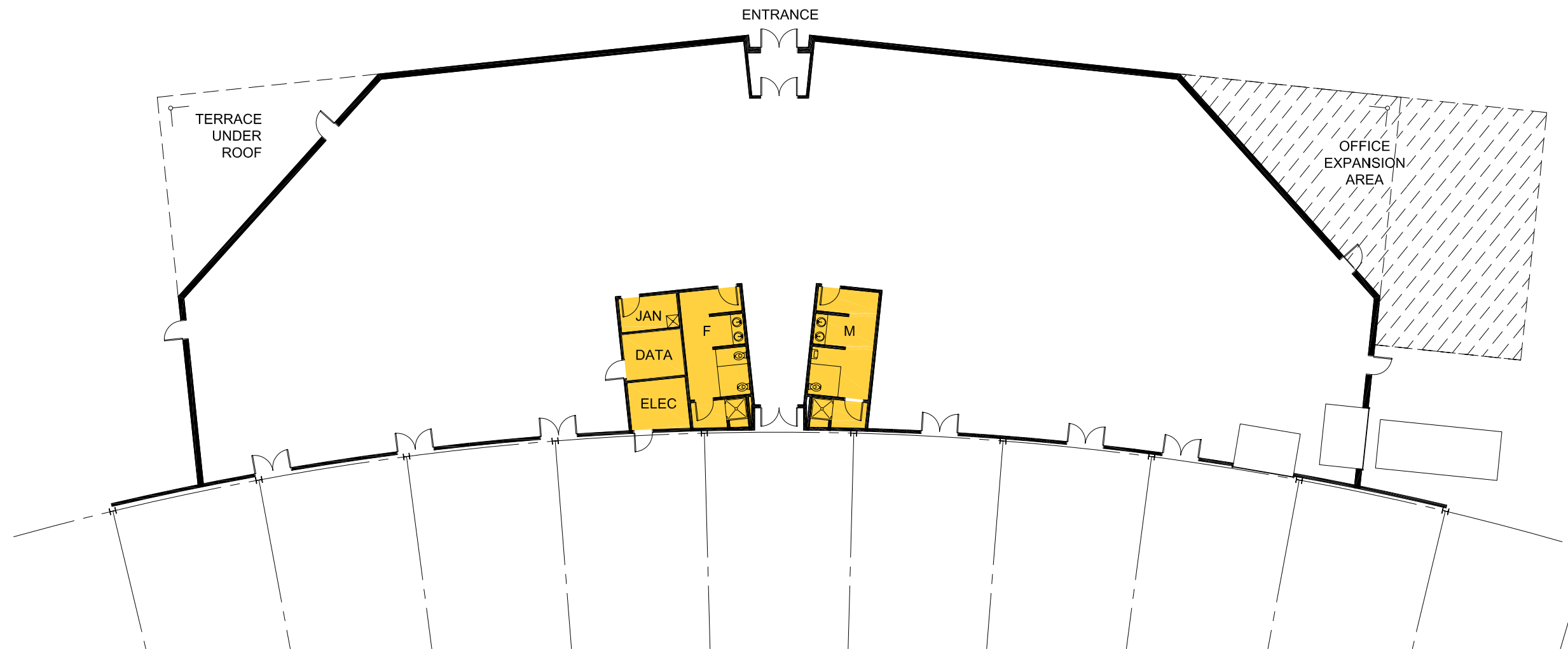




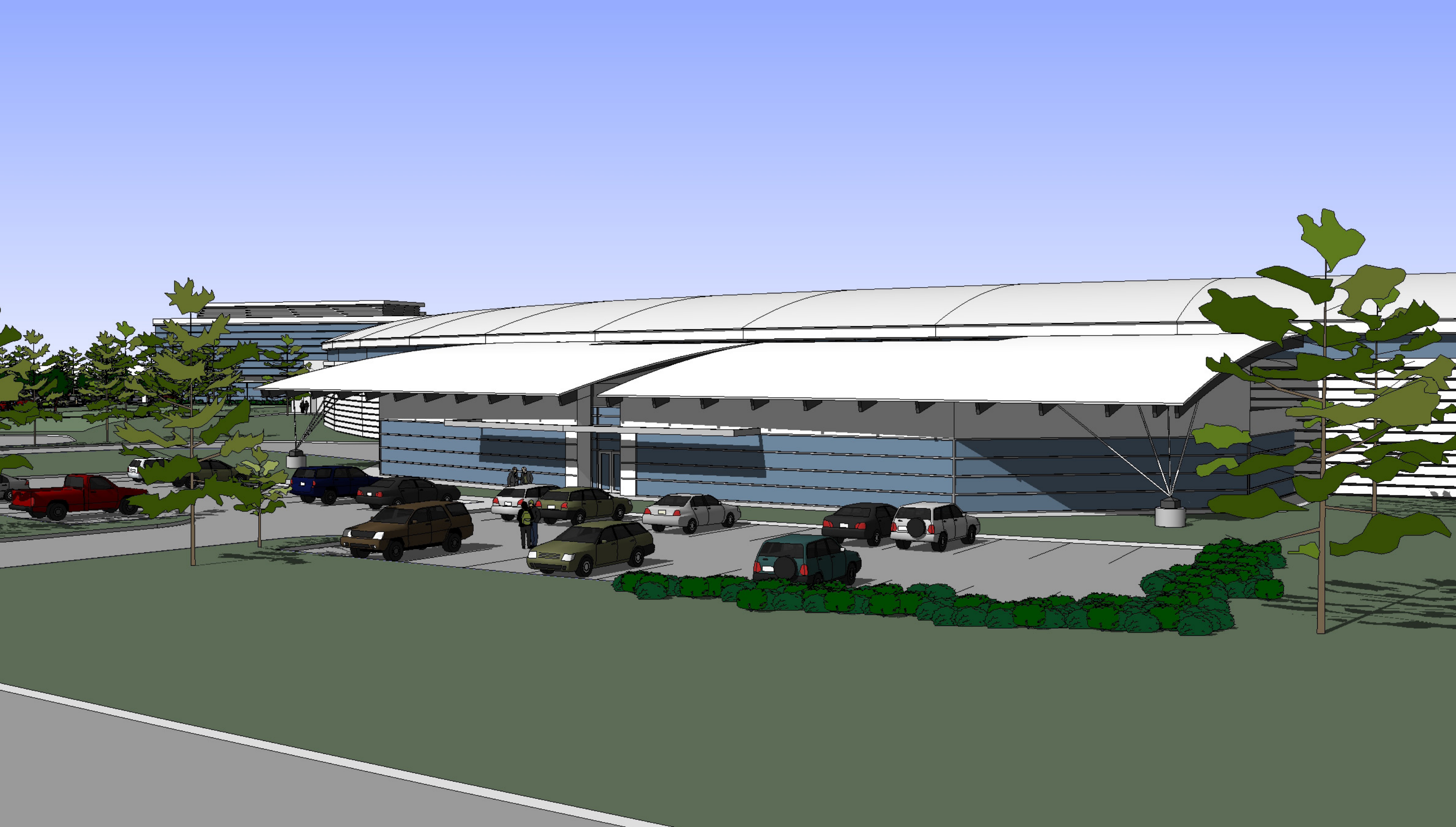
Square Footage:

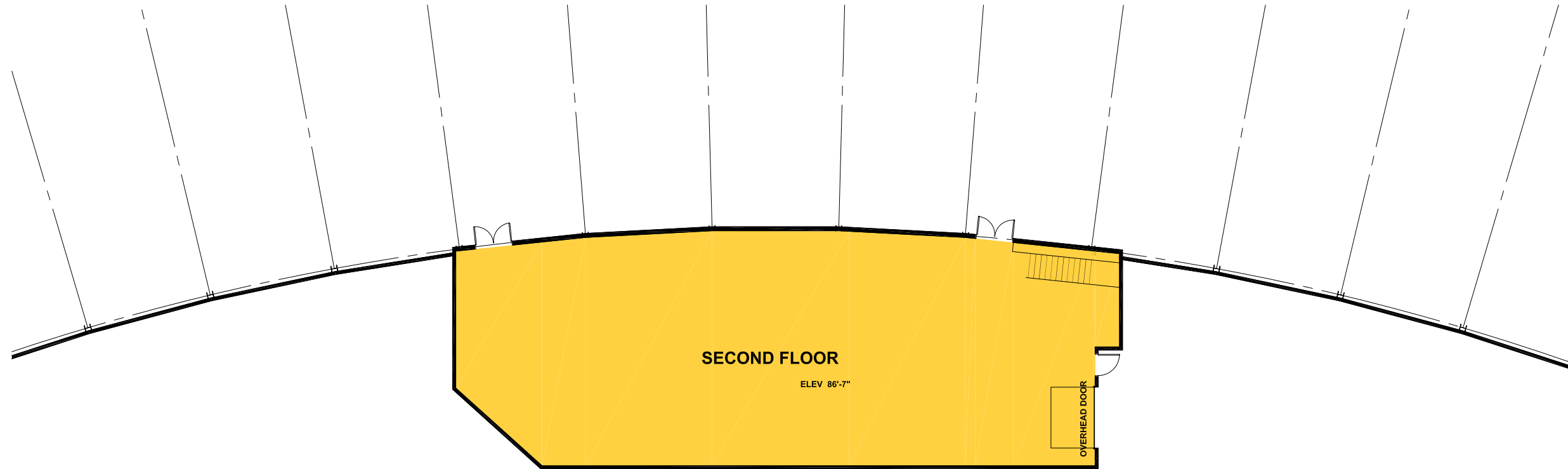
First Floor = 11,000Gross Sqft

 BUILDING SUPPORT





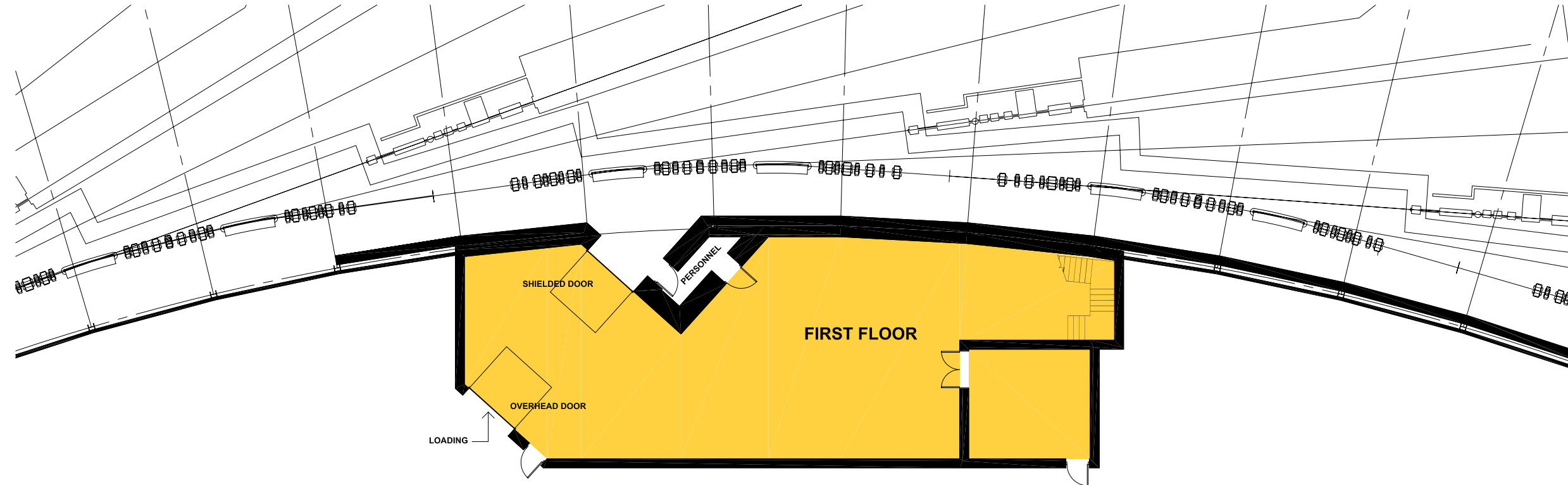




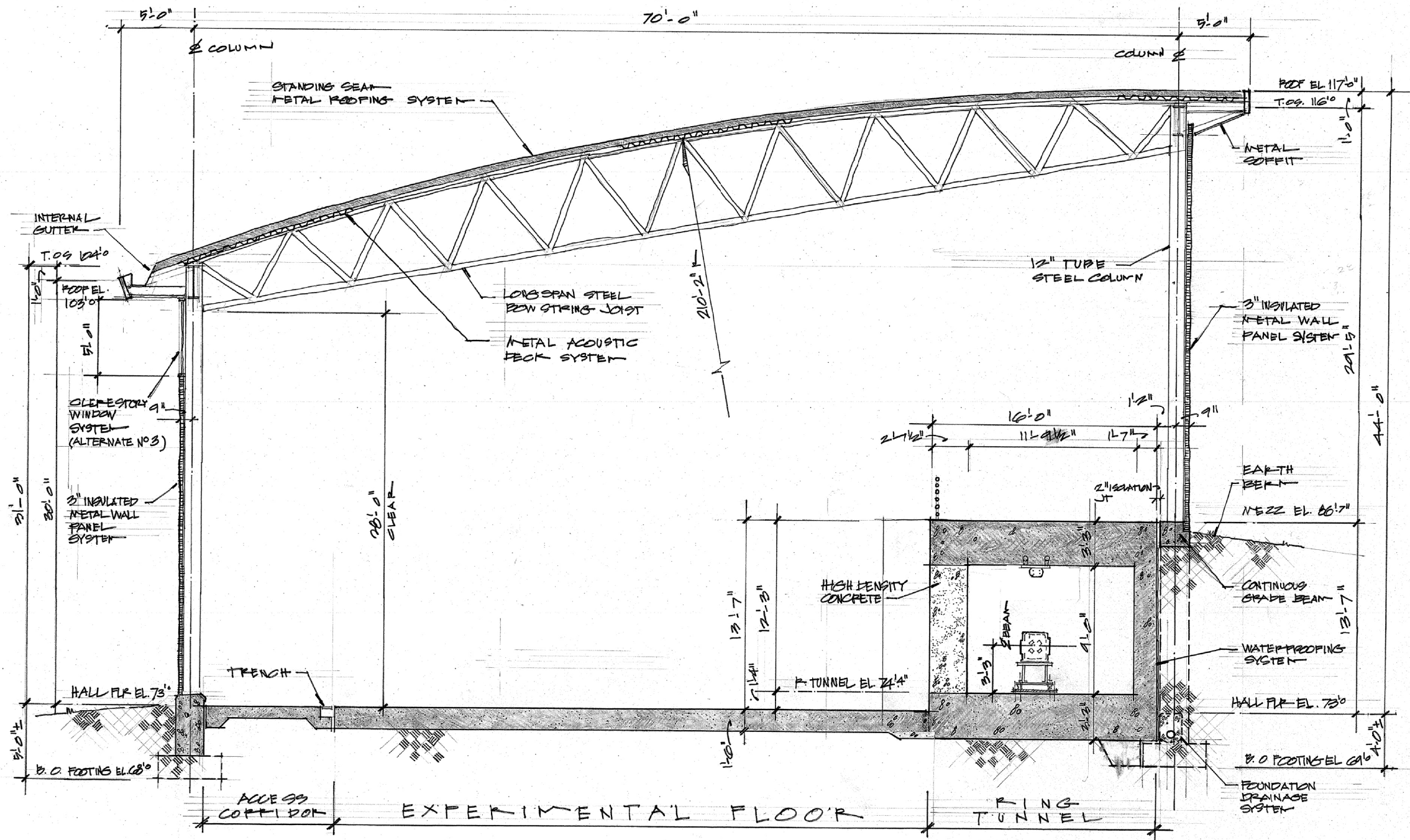
 BUILDING SUPPORT



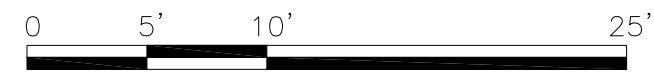




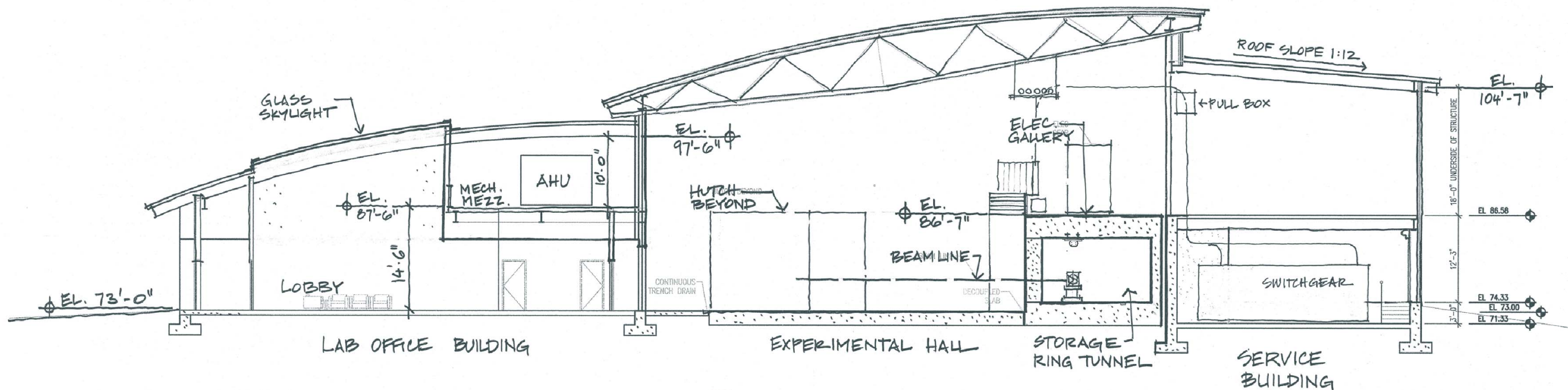
 BUILDING SUPPORT



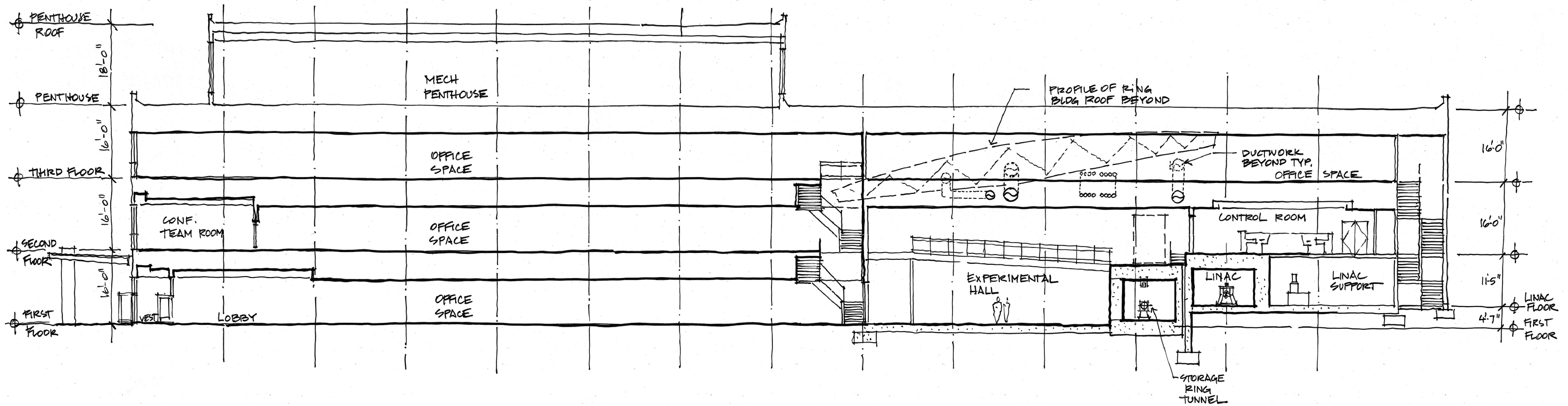
TYPICAL SECTION AT RING BUILDING



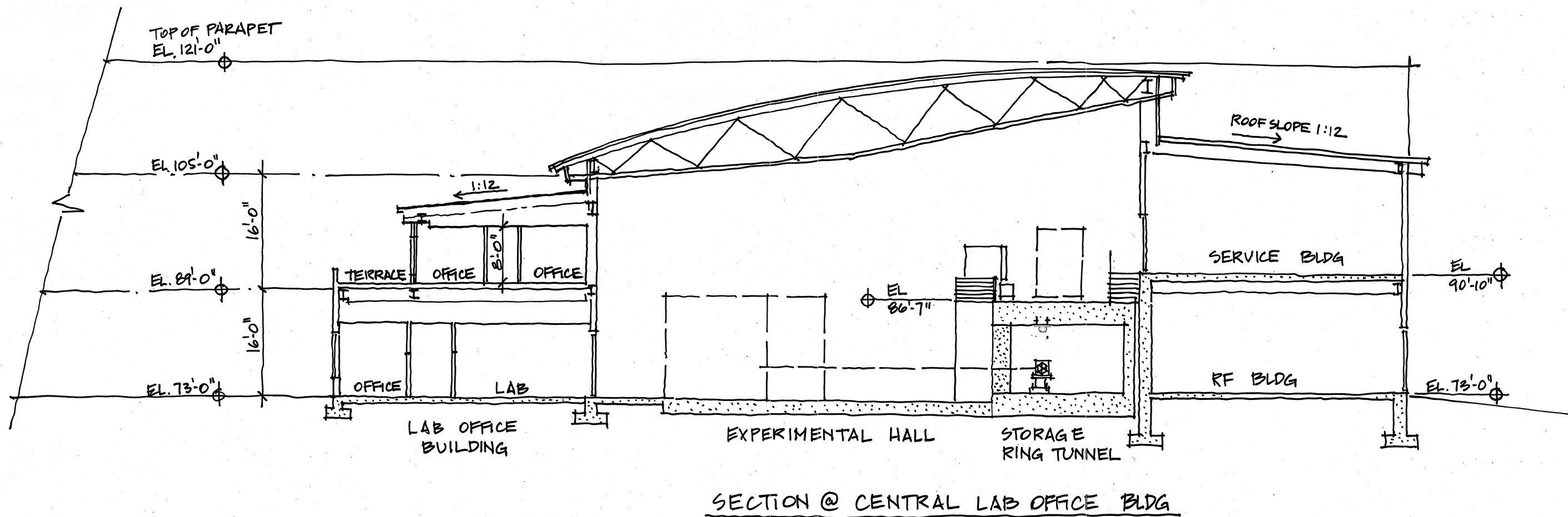


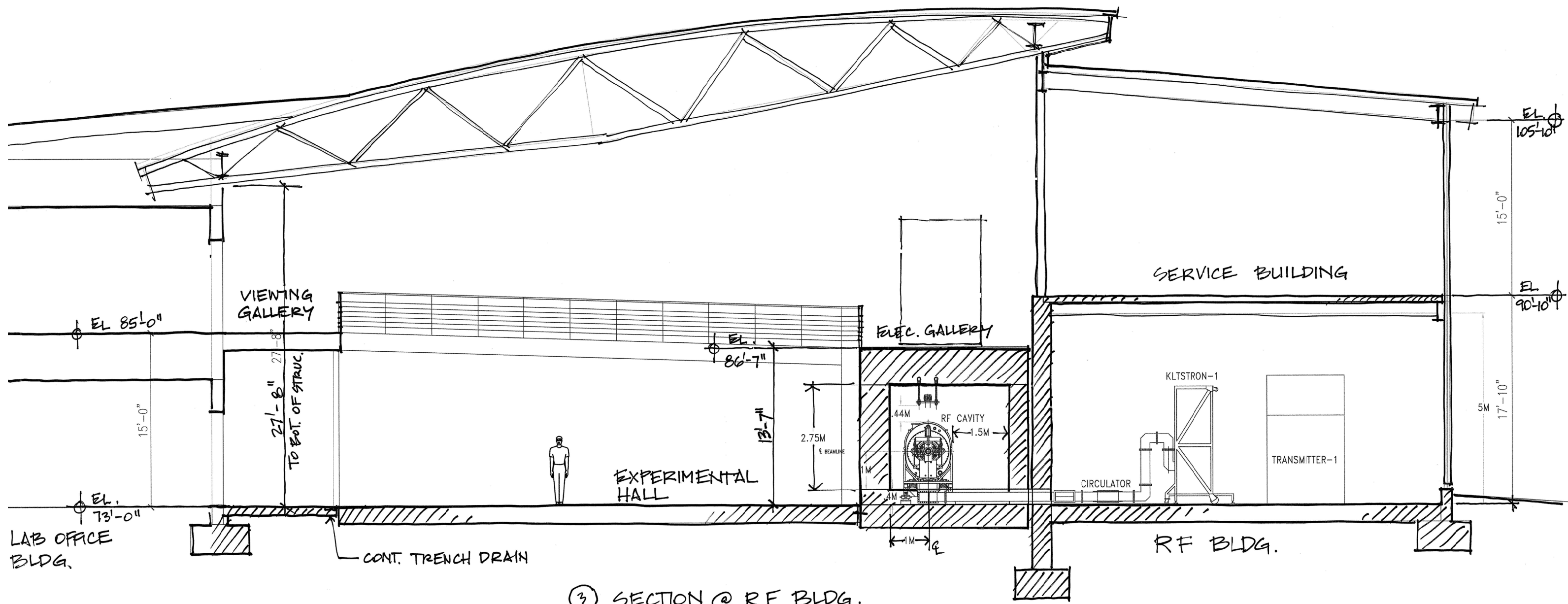


② SECTION @ LAB OFFICE BLDG.  
AND SERVICE BLDG.



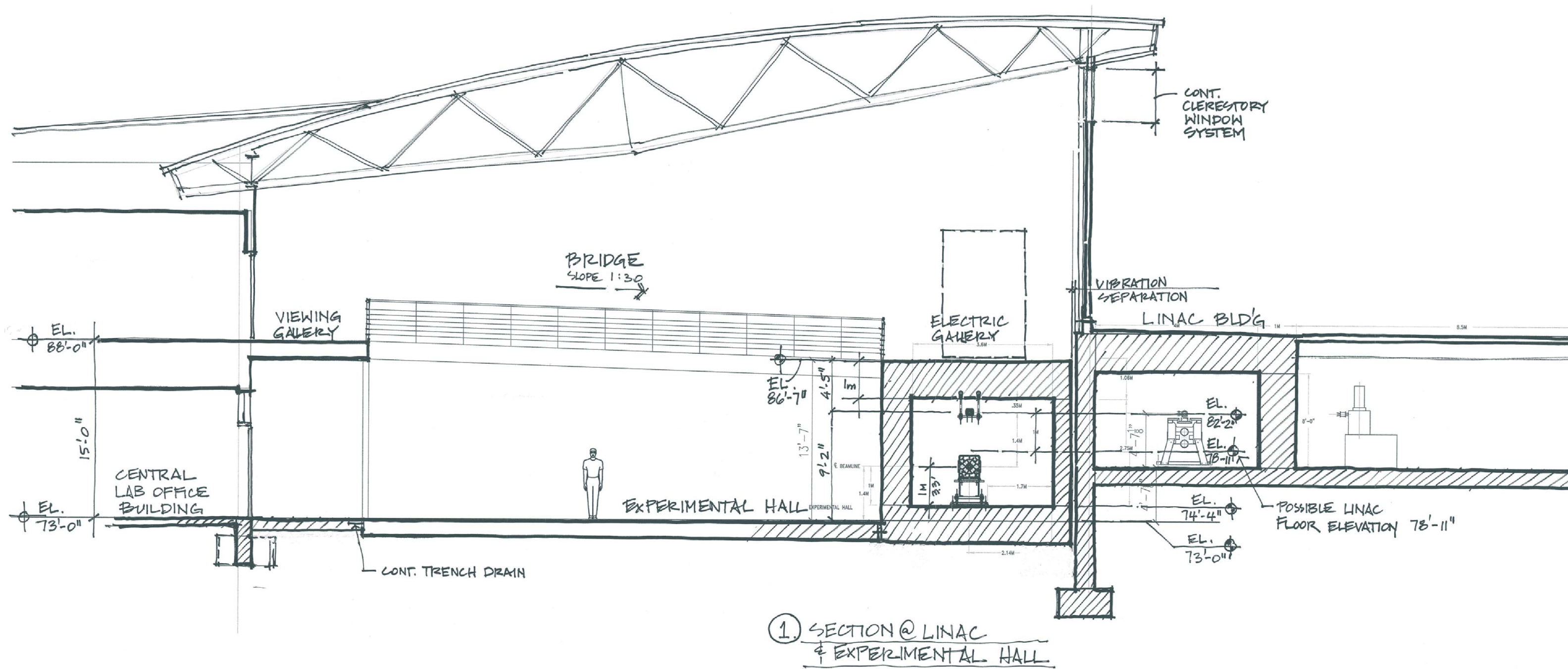






③ SECTION @ R.F. BLDG.  
 1/4" = 1'-0"





① SECTION @ LINAC & EXPERIMENTAL HALL