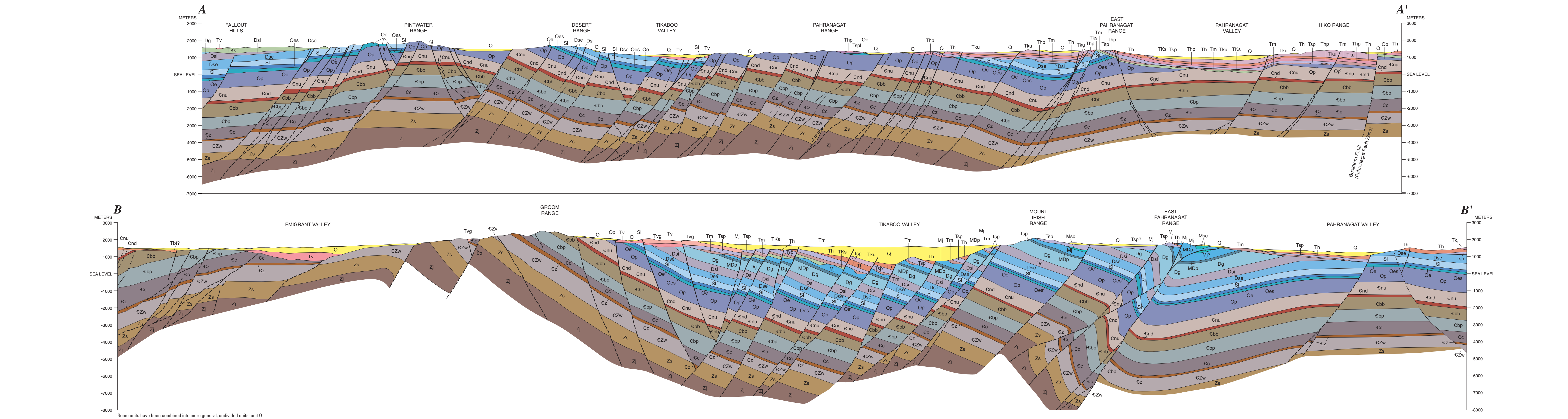
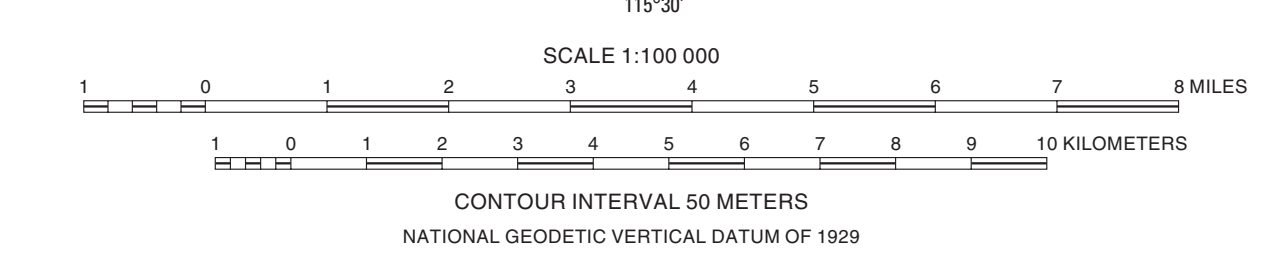


Topography, hydrography, and roads from U.S. Geological Survey 1:100,000-scale Digital Line Graphs (DLG); Pahrangat Range, 1972. Geographic names digitized from U.S. Geological Survey 1:100,000-scale published map, Pahrangat Range, 1972.

Geologic mapping in 1986-89. Edited by Lynn Lindquist; cartography by A.S. Jayko. Manuscript approved for publication September 16, 2005.



Some units have been combined into more general, undivided units, and Q includes units Qc, Qd, Qe, Qf, and Qg. The includes units Th, Tn, and Tz. Some small areas have been omitted.

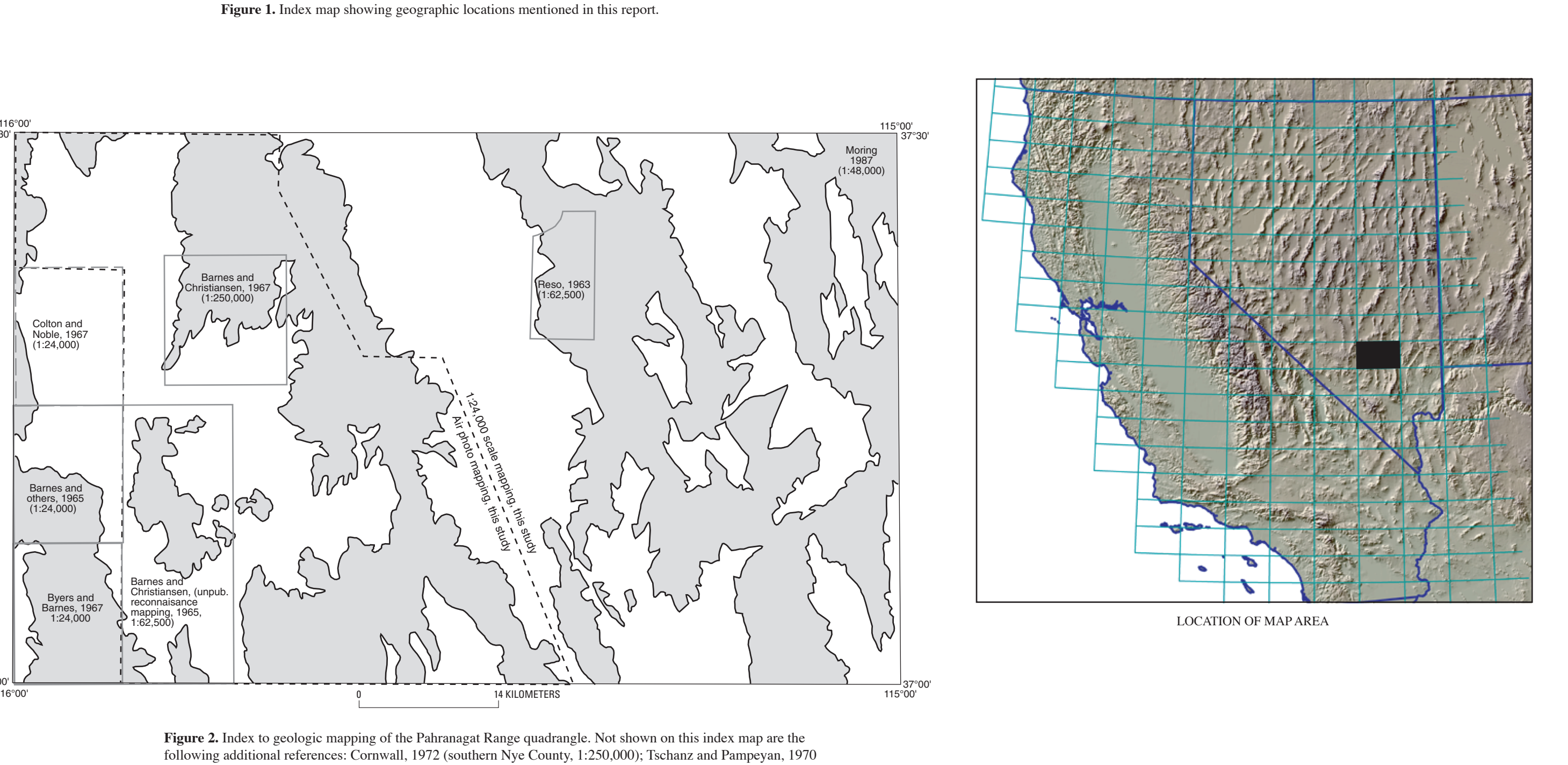
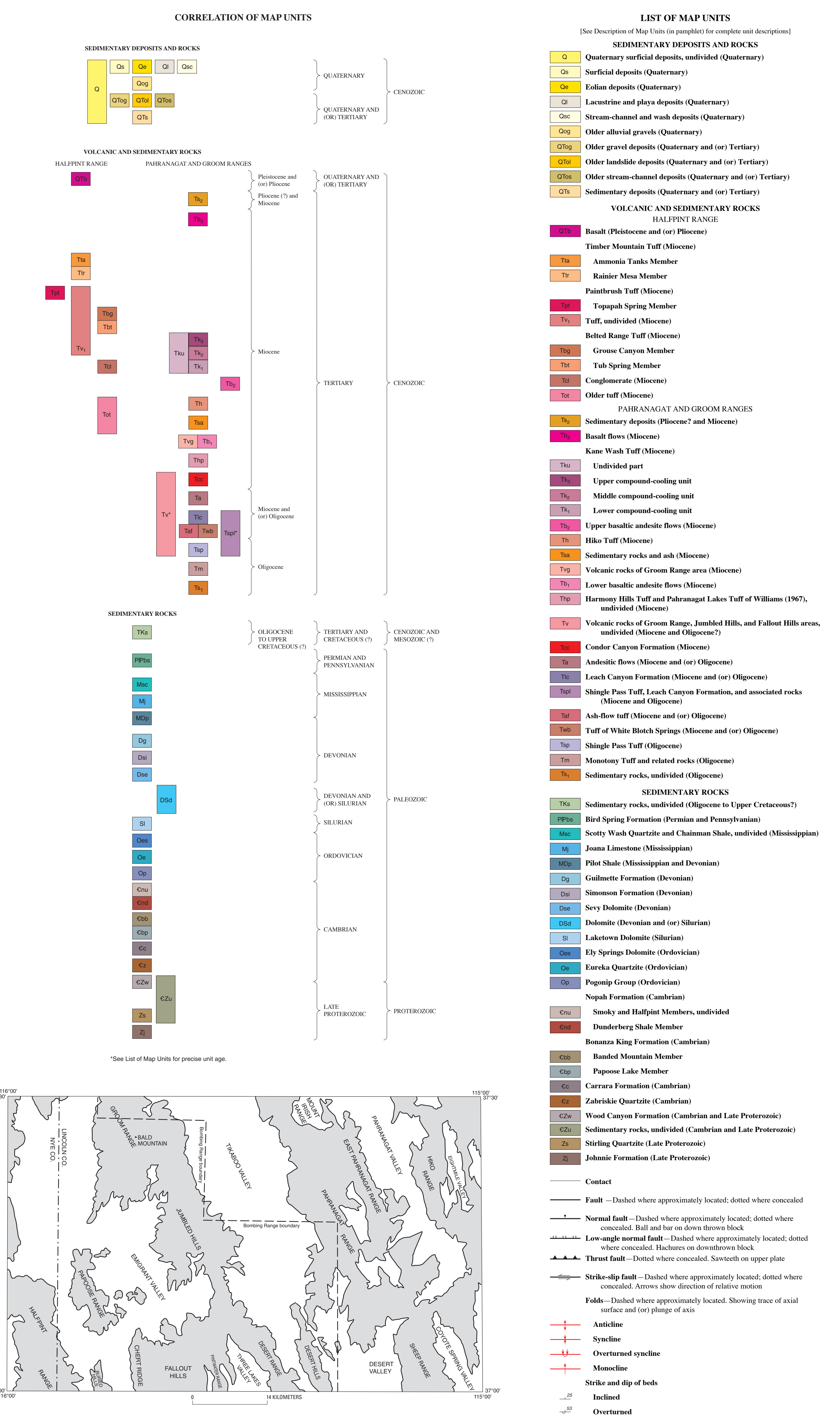


Figure 2. Index to geologic mapping of the Pahrangat Range quadrangle. Not shown on this index map are the following additional references: Conwell, 1972 (southern Nye County, 1:250,000); Tschira and Pampayan, 1970 (Lincoln County, 1:250,000); Eken and others, 1977 (Terry rocks of Lincoln County, 1:250,000).

Geologic Map of the Pahrangat Range 30' x 60' Quadrangle, Lincoln and Nye Counties, Nevada

By A.S. Jayko 2007

Any use of trade, firm, or product names in this publication is for descriptive purposes only and does not imply endorsement by the U.S. Government. This map was prepared as an electronic digital file using digital line, digitized contours, and other data. Some units and features may not be shown on this map. For more information, contact the U.S. Geological Survey, Information Services, Box 25286, Federal Center, Denver, CO 80225. 1-888-603-6847. Digital file available at <http://pubs.usgs.gov/of/2007/2904/>