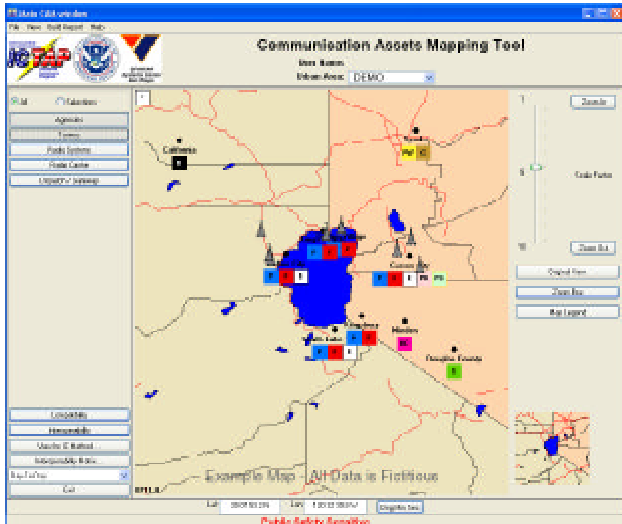


The Communication Assets Survey and Mapping Tool collects, displays and assesses Public Safety & First Responder Land Mobile Radio (LMR) Voice communications equipment and interoperability methods for Agencies in an Urban Area.



Agencies, Radio Systems, Towers, Gateways, Dispatches and other Communication Assets are represented on the Map-based Interface.



For more information, please contact:

**Keith Young
ICTAP Program Manager
Keith.Young@dhs.gov**

**Robert Ryder
ICTAP Technology Tools Manager
Bob.Ryder@navy.mil**



Public Safety Communication Assets Survey & Mapping Tool (CASM)

**Interoperable
Communications
Technical Assistance
Program (ICTAP)**



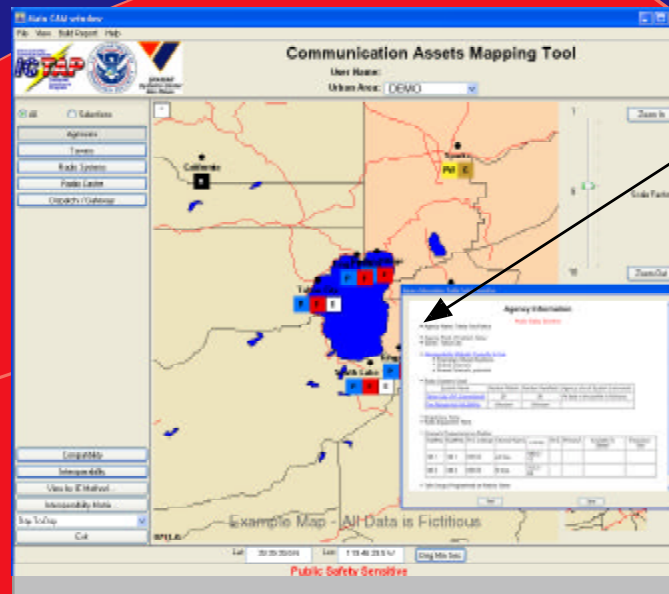
**Homeland
Security**

Office of Grants and Training
Preparedness Directorate
U.S. Department of Homeland Security

The Interoperable Communications Technical Assistance Program (ICTAP) provides CASM as a free resource to assist the enhancement of interoperable communications to emergency responders and public safety officials in cities and States that have received grants from the Department of Homeland Security, Office of Grants and Training (G&T).

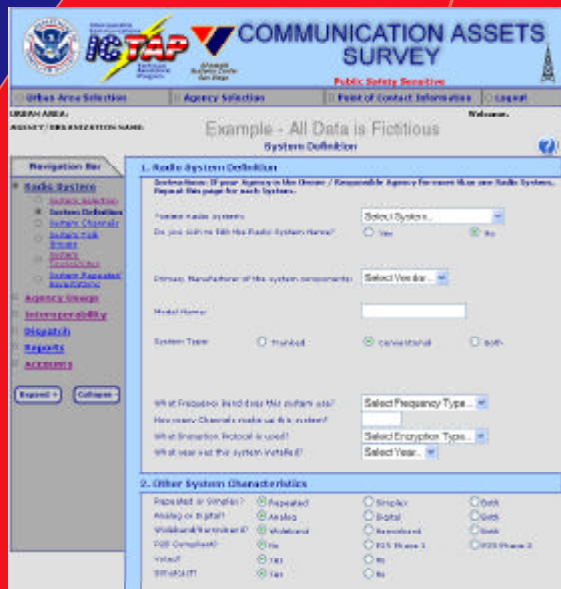
Survey Forms

- LMR Equipment Inventory
- Interoperability Inventory
- Web-based Questionnaire
- Secure Database
- Secure Access Controls



Features:

- Clear, color-coded format
- Clickable icons for detailed info
- Selectable map views
- Map legend
- On-line, detailed help
- Report generation feature
- Auto-generation of DHS required Tactical Interoperable Communications Plan (TICP) sections



Features:

- Easy maintenance with web interface
- Numerous drop-down pick lists
- Data entry prompts
- Data validation for uniform data
- Minimal required fields
- Access controlled by Urban Area

Mapping Display and Analysis

Layered Display of Agencies & Communication Assets

Detailed Information Text Screens

Interoperability Assessment based on SAFECOM Continuum

Interoperability and Compatibility in matrix and map views

