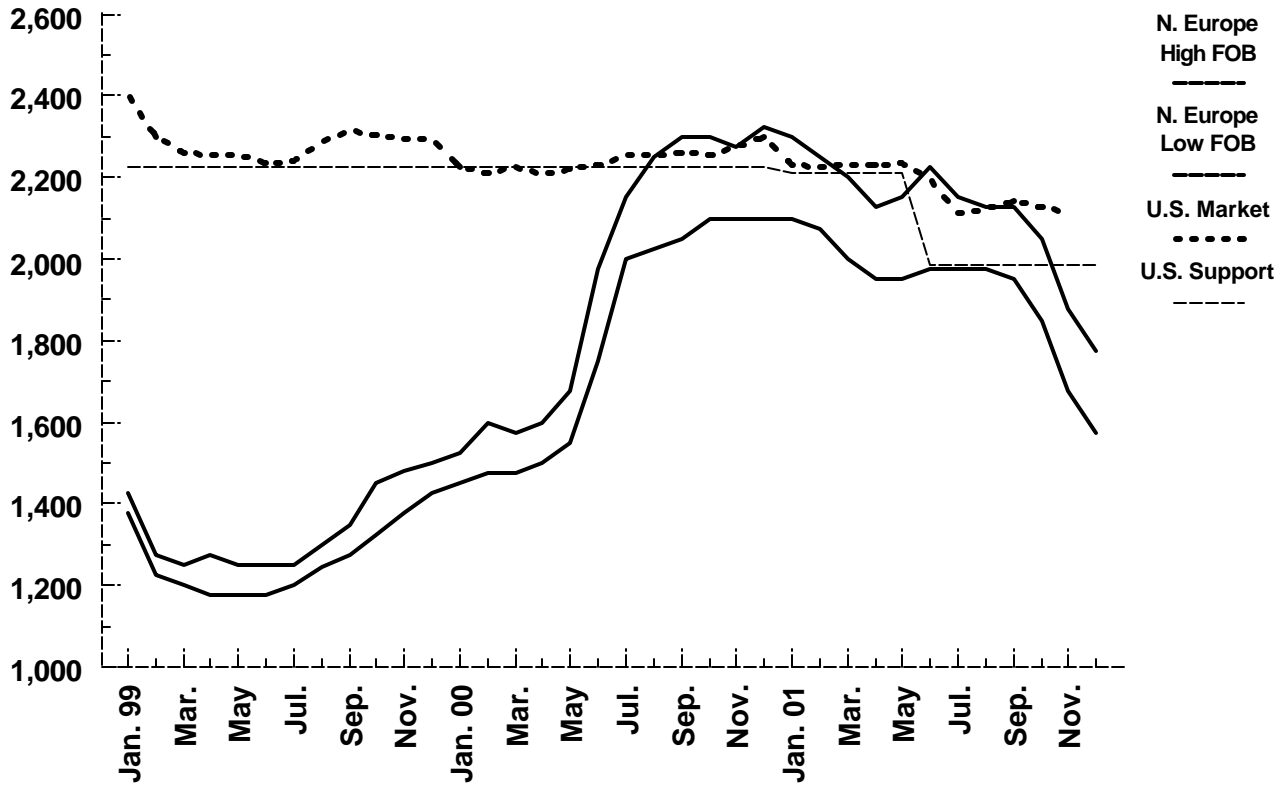


WORLD NONFAT DRY MILK PRICES
(Extra Grade)

\$/Metric Ton



	N. Europe High FOB	N. Europe Low FOB	U.S. Market West	U.S. Support
Jan. 99	1,425	1,375	2,400	2,227
Feb.	1,275	1,225	2,300	2,227
Mar.	1,250	1,200	2,260	2,227
Apr.	1,275	1,175	2,255	2,227
May	1,250	1,175	2,255	2,227
Jun.	1,250	1,175	2,235	2,227
Jul.	1,250	1,200	2,240	2,227
Aug.	1,300	1,245	2,290	2,227
Sep.	1,350	1,275	2,311	2,227
Oct.	1,450	1,325	2,305	2,227
Nov.	1,480	1,375	2,295	2,227
Dec.	1,500	1,425	2,295	2,227
Jan. 00	1,525	1,450	2,225	2,227
Feb.	1,600	1,475	2,210	2,227
Mar.	1,575	1,475	2,225	2,227
Apr.	1,600	1,500	2,205	2,227
May	1,675	1,550	2,220	2,227
Jun.	1,975	1,750	2,230	2,227
Jul.	2,150	2,000	2,255	2,227
Aug.	2,250	2,025	2,255	2,227
Sep.	2,300	2,100	2,260	2,227
Oct.	2,300	2,100	2,255	2,227
Nov.	2,275	2,100	2,272	2,227
Dec.	2,325	2,100	2,300	2,227
Jan. 01	2,300	2,100	2,232	2,212
Feb.	2,250	2,075	2,227	2,212
Mar.	2,200	2,000	2,230	2,212
Apr.	2,125	1,950	2,232	2,212
May	2,150	1,950	2,234	2,212
Jun.	2,225	1,975	2,195	1,984
Jul.	2,150	1,975	2,115	1,984
Aug.	2,125	1,975	2,120	1,984
Sep.	2,125	1,950	2,140	1,984
Oct.	2,050	1,850	2,125	1,984
Nov.	1,875	1,675	2,115	1,984
Dec.	1,775	1,575		1,984

Source: USDA/FAS/DL&P,
AMS