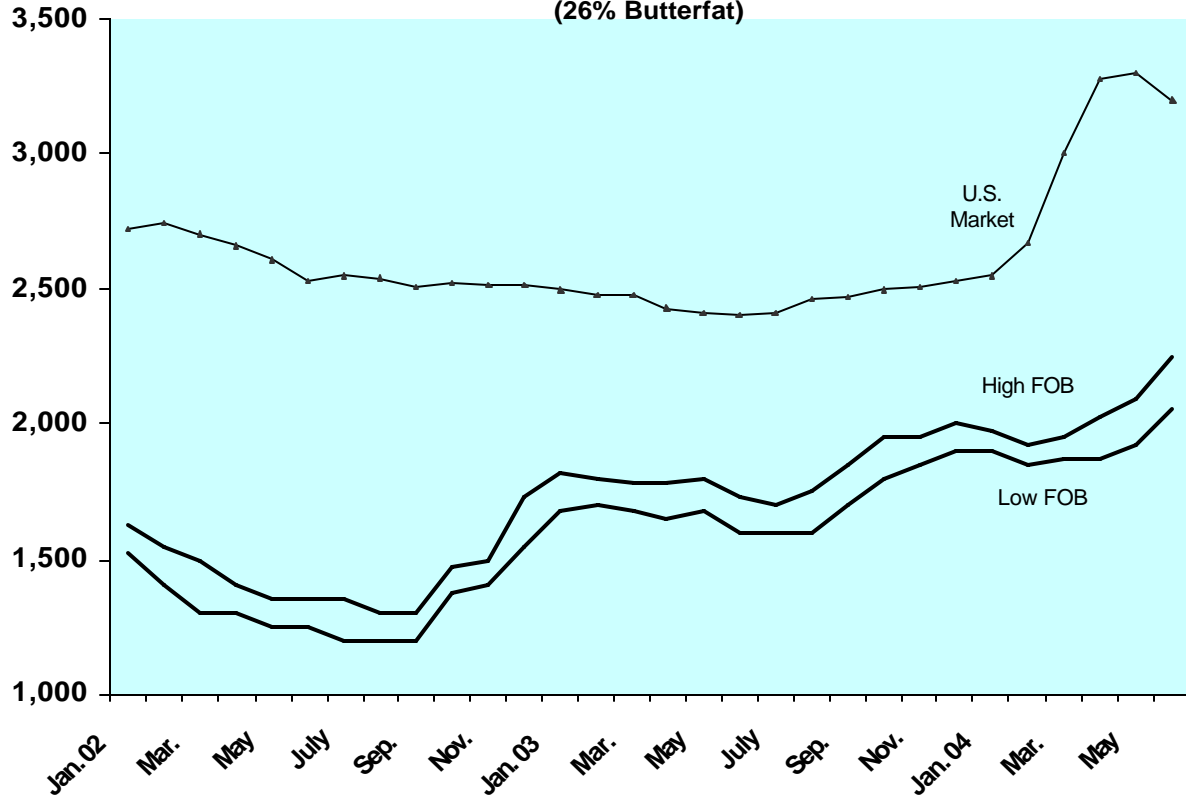


\$/Metric Ton

WORLD WHOLE MILK PRICES

(26% Butterfat)



	N. Europe High FOB	N. Europe Low FOB	U.S. Market
Jan.02	1,625	1,525	2,725
Feb.	1,550	1,400	2,750
Mar.	1,500	1,300	2,700
Apr.	1,400	1,300	2,660
May	1,350	1,250	2,610
June	1,350	1,250	2,535
July	1,350	1,200	2,550
Aug.	1,300	1,200	2,540
Sep.	1,300	1,200	2,510
Oct.	1,475	1,375	2,520
Nov.	1,500	1,400	2,515
Dec.	1,725	1,550	2,515
Jan.03	1,825	1,675	2,500
Feb.	1,800	1,700	2,480
Mar.	1,775	1,675	2,485
Apr.	1,775	1,650	2,430
May	1,800	1,675	2,410
June	1,725	1,600	2,405
July	1,700	1,600	2,410
Aug.	1,750	1,600	2,460
Sep.	1,850	1,700	2,470
Oct.	1,950	1,800	2,495
Nov.	1,950	1,850	2,510
Dec.	2,000	1,900	2,530
Jan.03	1,975	1,900	2,550
Feb.	1,975	1,850	2,670
Mar.	1,950	1,875	3,000
Apr.	2,025	1,875	3,280
May	2,100	1,925	3,305
June	2,250	2,050	3,200