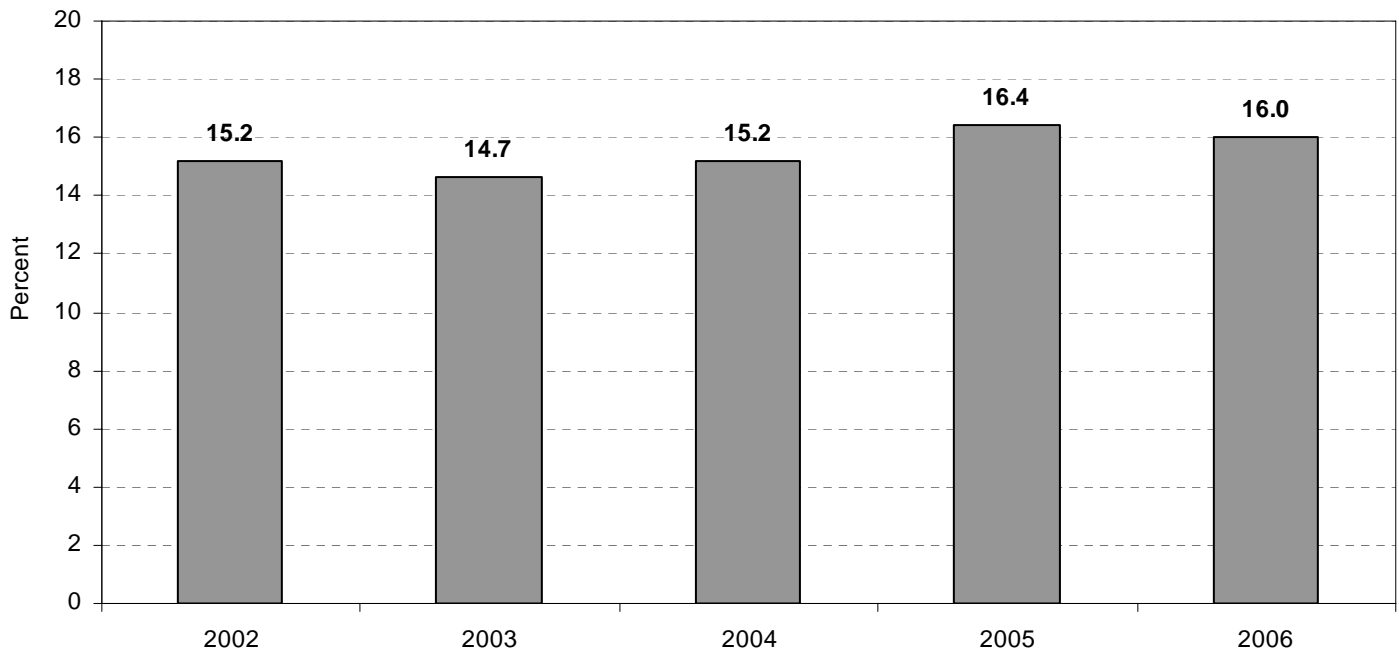
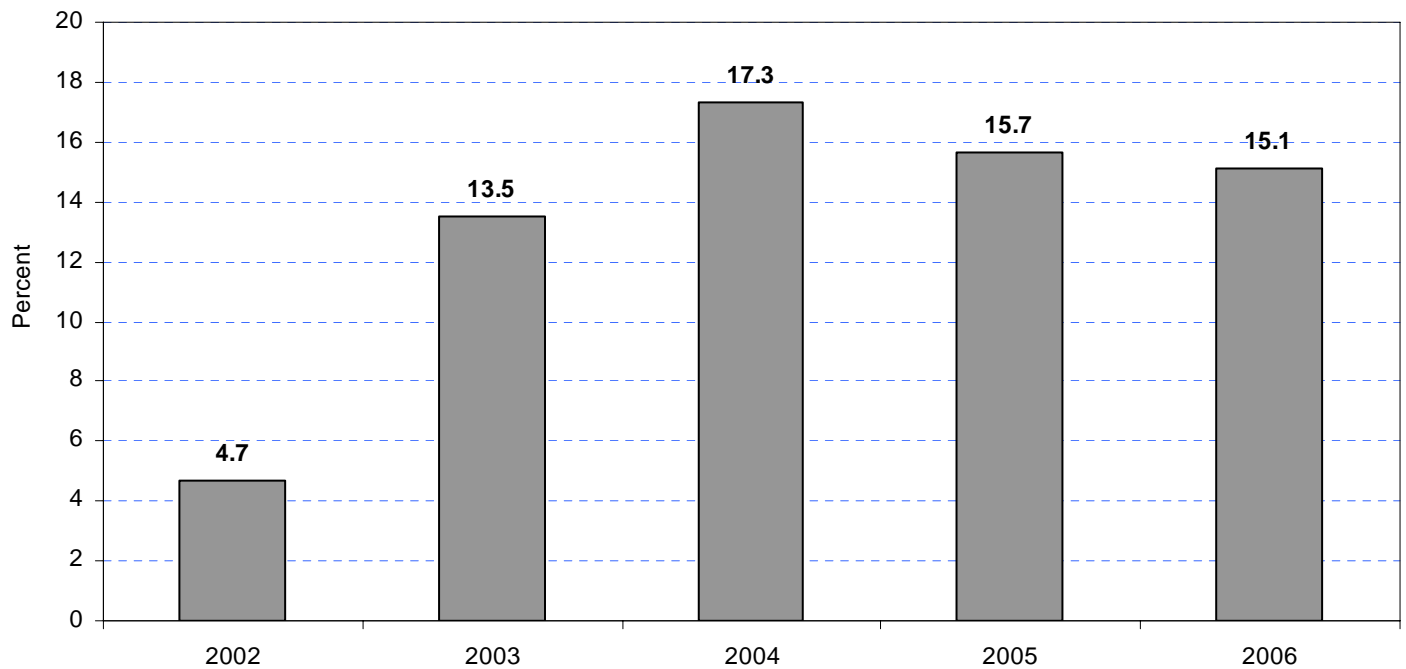


Figure 6. Net Imports as a Percentage of Total Consumption of Natural Gas, 2002-2006



Sources: Energy Information Administration (EIA), Form EIA-176, "Annual Report of Natural and Supplemental Gas Supply and Disposition"; Form EIA-64A, "Annual Report of the Origin of Natural Gas Liquids Production"; Office of Fossil Energy, U.S. Department of Energy, *Natural Gas Imports and Exports*; Form EIA-895A, "Annual Quantity and Value of Natural Gas Production Report," Form EIA-906, "Power Plant Report"; Form EIA-886, "Annual Survey of Alternative Fueled Vehicle Suppliers and Users"; and EIA estimates.

Figure 7. Net LNG Imports as a Percentage of Total Net Imports of Natural Gas, 2002-2006



Sources: Office of Fossil Energy, U.S. Department of Energy, "*Natural Gas Imports and Exports*."