



**Oregon**  
Department  
of Agriculture

Animal Health & Id. Division/ Feed Program  
635 Capitol Street NE  
Salem OR 97301-2532

11/27/07

TO: Oregon Feed Manufacturers

Re: Selenium feed levels

Recent testing by ODA has revealed an increase in the background level of selenium in Oregon's feed ingredient supply. A summary of some of the tests is in the table below. Please take this into account as you formulate diets.

The levels being seen are below the thresholds of causing a health concern (Mineral tolerances of Domestic Animal 1980, National Academy of Sciences, page 400) but individual feeding situations may vary. Producers should be advised to work with their veterinarian or nutritionist if providing multiple sources of selenium.

We recommend manufacturers occasionally check selenium levels in feeds for species sensitive to Selenium as well as updating formulation system ingredient mineral values as needed. Please note, for most species FDA only allows 0.3 ppm to selenium be added in the complete feed. Feed manufacturing records may be subject to ODA audits when lab results show elevated levels of selenium beyond expected ranges.

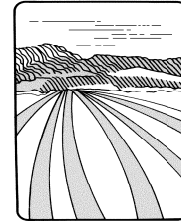
ODA may consider proposing to require a maximum selenium guarantee be added to the feed label if the above observation persists. The actual selenium level should be within 25% of the tag guarantee.

If you have any questions please feel free to call or email me.

Sincerely,

Richard Ten Eyck, Feed Specialist  
Animal Health & Identification Division  
Voice 503-986-4691 FAX 503-986-4734  
e-mail [rteneyck@oda.state.or.us](mailto:rteneyck@oda.state.or.us)  
<http://oregon.gov/oda/ahid>

Encl: Table of September 2007 Selenium results



**Oregon**  
Department  
of Agriculture

Animal Health & Id. Division/ Feed Program  
635 Capitol Street NE  
Salem OR 97301-2532

11/27/07

**Selenium levels in Feeds Distributed in Oregon  
September 2007**

Product	Source Location	Selenium Expected ppm	Selenium Found ppm	% of Expected	type of feed
Whole Wheat	Oregon	0.1	0.02	20.0%	Ingredient
Se 90 TM salt	Kansas	90	40.8	45.3%	Se Salt Block
Limestone	Washington	0.1	0.047	47.0%	Mineral source
Hog Grower	Idaho	0.4	0.596	149.0%	Complete hog grower
<b>Whole Corn</b>	Midwest	0.1	<b>0.153</b>	153.0%	Ingredient
<b>Oat Pellets</b>	Oregon	0.1	<b>0.174</b>	174.0%	Oat mill byproduct
<b>COB</b>	California	0.1	<b>0.196</b>	196.0%	Grain Mix
Hog Grower	California	0.3	0.614	204.7%	Complete show hog grower
Hog Grower	California	0.3	0.656	218.7%	Complete hog grower
Hog Grower	California	0.3	0.656	218.7%	Complete hog grower
<b>Whole Corn</b>	Midwest	0.1	<b>0.265</b>	265.0%	Ingredient
*Hog Grower	Oregon	0.3	0.799	266.3%	Complete hog grower
*Hog Grower	Oregon	0.2	0.584	292.0%	Complete hog grower
*Hog Grower	Oregon	0.3	0.892	297.3%	Complete show hog grower
*Hog Grower	Oregon	0.3	1.22	406.7%	Complete hog grower
<b>Soybean Meal</b>	Midwest	0.1	<b>0.451</b>	451.0%	Ingredient
Textured livestock	Washington	0.1	0.544	544.0%	all purpose livestock feed
<b>Soybean Meal</b>	Nebraska	0.1	<b>0.718</b>	718.0%	Ingredient
Mono Dical	unknown	0.1	1.44	1440.0%	Mineral source

\*Hog grower rations were from different mills.