

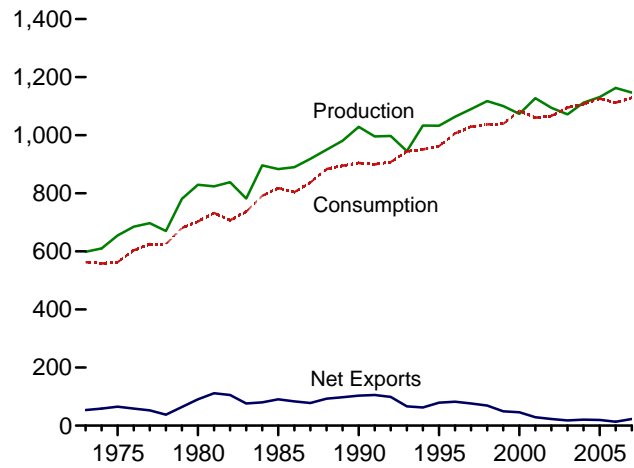
# Coal



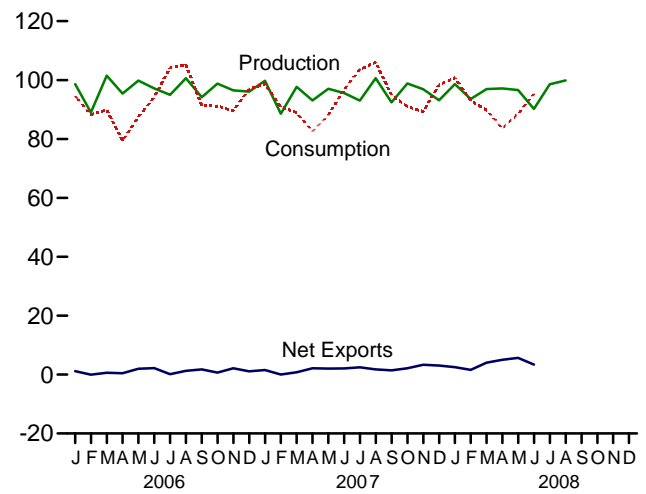
Coal yard, Curtis Bay, Maryland. Source: U.S. Department of Energy.

**Figure 6.1 Coal**  
(Million Short Tons)

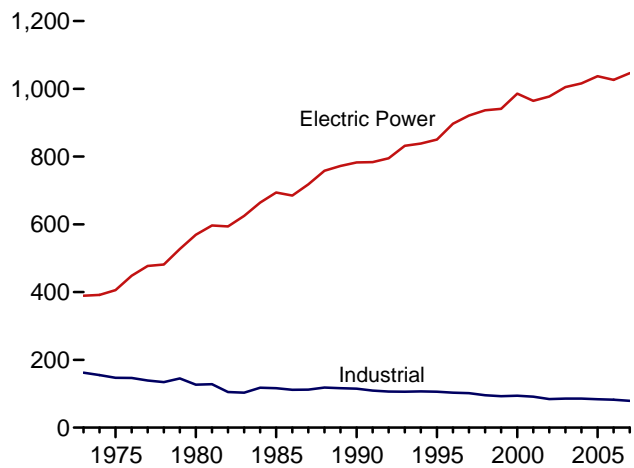
Overview, 1973-2007



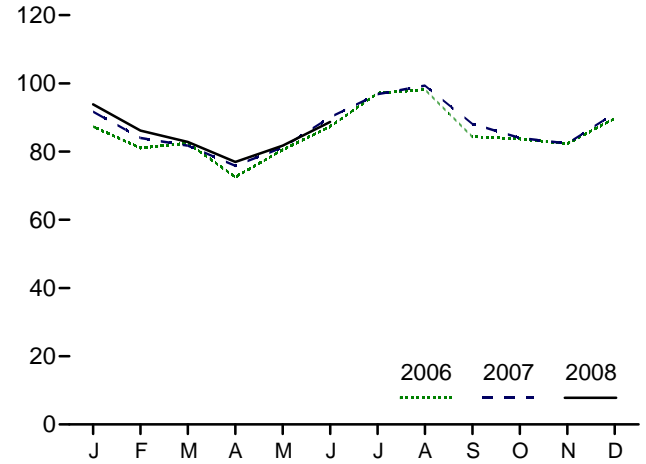
Overview, Monthly



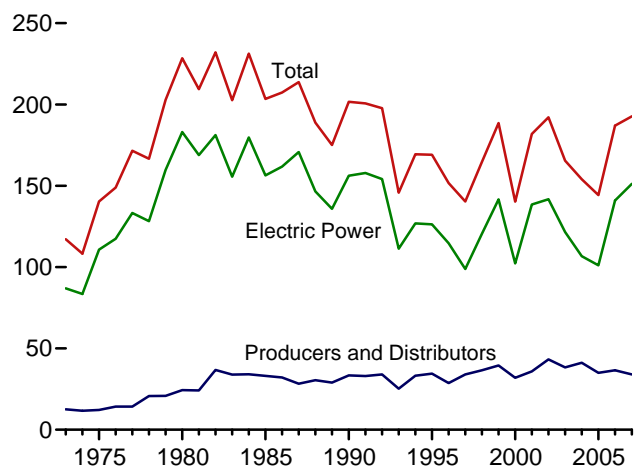
Consumption by Sector, 1973-2007



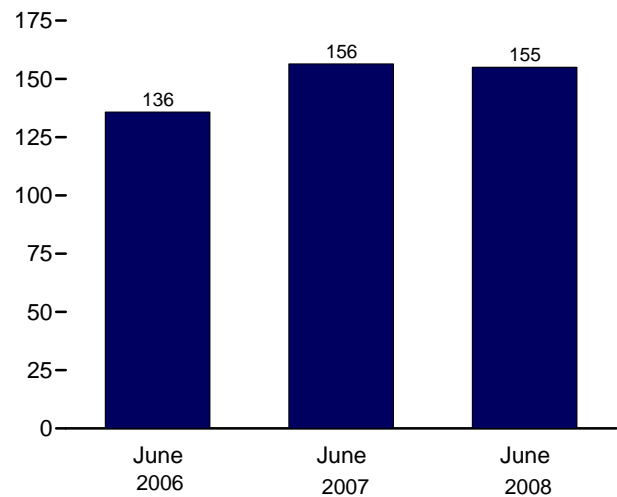
Electric Power Sector Consumption, Monthly



Stocks, End of Year, 1973-2007



Electric Power Sector Stocks, End of Month



Note: Because vertical scales differ, graphs should not be compared.  
Web Page: <http://www.eia.doe.gov/emeu/mer/coal.html>.  
Sources: Tables 6.1, 6.2, and 6.3.

**Table 6.1 Coal Overview**  
(Thousand Short Tons)

	Production <sup>a</sup>	Waste Coal Supplied <sup>b</sup>	Trade			Stock Change <sup>d</sup>	Losses and Unaccounted for <sup>e</sup>	Consumption
			Imports	Exports	Net Imports <sup>c</sup>			
<b>1973 Total</b> .....	<b>598,568</b>	<b>NA</b>	<b>127</b>	<b>53,587</b>	<b>-53,460</b>	<b>(<sup>f</sup>)</b>	<b><sup>f</sup>-17,476</b>	<b>562,584</b>
<b>1975 Total</b> .....	<b>654,641</b>	<b>NA</b>	<b>940</b>	<b>66,309</b>	<b>-65,369</b>	<b>32,154</b>	<b>-5,522</b>	<b>562,640</b>
<b>1980 Total</b> .....	<b>829,700</b>	<b>NA</b>	<b>1,194</b>	<b>91,742</b>	<b>-90,548</b>	<b>25,595</b>	<b>10,827</b>	<b>702,730</b>
<b>1985 Total</b> .....	<b>883,638</b>	<b>NA</b>	<b>1,952</b>	<b>92,680</b>	<b>-90,727</b>	<b>-27,934</b>	<b>2,796</b>	<b>818,049</b>
<b>1990 Total</b> .....	<b>1,029,076</b>	<b>3,339</b>	<b>2,699</b>	<b>105,804</b>	<b>-103,104</b>	<b>26,542</b>	<b>-1,730</b>	<b>904,498</b>
<b>1995 Total</b> .....	<b>1,032,974</b>	<b>8,561</b>	<b>9,473</b>	<b>88,547</b>	<b>-79,074</b>	<b>-275</b>	<b>632</b>	<b>962,104</b>
<b>1996 Total</b> .....	<b>1,063,856</b>	<b>8,778</b>	<b>8,115</b>	<b>90,473</b>	<b>-82,357</b>	<b>-17,456</b>	<b>1,411</b>	<b>1,006,321</b>
<b>1997 Total</b> .....	<b>1,089,932</b>	<b>8,096</b>	<b>7,487</b>	<b>83,545</b>	<b>-76,058</b>	<b>-11,253</b>	<b>3,678</b>	<b>1,029,544</b>
<b>1998 Total</b> .....	<b>1,117,535</b>	<b>8,690</b>	<b>8,724</b>	<b>78,048</b>	<b>-69,324</b>	<b>24,228</b>	<b>-4,430</b>	<b>1,037,103</b>
<b>1999 Total</b> .....	<b>1,100,431</b>	<b>8,683</b>	<b>9,089</b>	<b>58,476</b>	<b>-49,387</b>	<b>23,988</b>	<b>-2,906</b>	<b>1,038,647</b>
<b>2000 Total</b> .....	<b>1,073,612</b>	<b>9,089</b>	<b>12,513</b>	<b>58,489</b>	<b>-45,976</b>	<b>-48,309</b>	<b>938</b>	<b>1,084,095</b>
<b>2001 Total</b> .....	<b>1,127,689</b>	<b>10,085</b>	<b>19,787</b>	<b>48,666</b>	<b>-28,879</b>	<b>41,630</b>	<b>7,120</b>	<b>1,060,146</b>
<b>2002 Total</b> .....	<b>1,094,283</b>	<b>9,052</b>	<b>16,875</b>	<b>39,601</b>	<b>-22,726</b>	<b>10,215</b>	<b>4,040</b>	<b>1,066,355</b>
<b>2003 Total</b> .....	<b>1,071,753</b>	<b>10,016</b>	<b>25,044</b>	<b>43,014</b>	<b>-17,970</b>	<b>-26,659</b>	<b>-4,403</b>	<b>1,094,861</b>
<b>2004 Total</b> .....	<b>1,112,099</b>	<b>11,299</b>	<b>27,280</b>	<b>47,998</b>	<b>-20,718</b>	<b>-11,462</b>	<b>6,887</b>	<b>1,107,255</b>
<b>2005 Total</b> .....	<b>1,131,498</b>	<b>13,352</b>	<b>30,460</b>	<b>49,942</b>	<b>-19,482</b>	<b>-9,702</b>	<b>9,092</b>	<b>1,125,978</b>
<b>2006</b>								
January .....	98,621	1,278	3,031	4,187	-1,155	2,671	1,451	94,621
February .....	89,033	1,113	2,715	2,656	60	1,938	37	88,231
March .....	101,490	1,223	3,211	3,817	-606	6,214	6,016	89,877
April .....	95,413	1,137	3,030	3,481	-451	15,539	1,141	79,419
May .....	99,843	1,024	2,742	4,736	-1,995	6,050	5,332	87,490
June .....	97,160	1,202	2,185	4,373	-2,188	2,820	-944	94,298
July .....	94,994	1,298	3,181	3,331	-150	-4,861	-3,142	104,145
August .....	100,654	1,349	3,849	5,093	-1,244	-6,661	2,221	105,198
September .....	94,144	1,140	3,370	5,115	-1,745	939	1,266	91,334
October .....	98,808	1,213	3,214	3,908	-694	9,325	-1,197	91,199
November .....	96,526	1,188	2,630	4,768	-2,139	7,176	-1,148	89,548
December .....	96,063	1,245	3,089	4,182	-1,093	1,493	-2,208	96,930
<b>Total</b> .....	<b>1,162,750</b>	<b>14,409</b>	<b>36,246</b>	<b>49,647</b>	<b>-13,401</b>	<b>42,642</b>	<b>8,824</b>	<b>1,112,292</b>
<b>2007</b>								
January .....	99,784	937	2,844	4,368	-1,524	-4,354	R 4,796	R 98,756
February .....	88,580	1,096	2,656	2,685	-28	-4,479	R 3,195	R 90,931
March .....	97,677	1,191	3,285	4,086	-801	7,079	R 2,028	R 88,959
April .....	93,084	1,087	2,687	4,841	-2,154	7,944	R 1,470	R 82,603
May .....	97,038	1,049	2,691	4,747	-2,056	4,416	R 3,524	R 88,091
June .....	95,566	1,247	3,027	5,114	-2,087	-619	R -1,559	R 96,903
July .....	93,003	1,255	3,373	5,812	-2,438	-9,990	R -1,750	R 103,560
August .....	100,627	1,315	3,716	5,471	-1,756	-6,135	R 280	R 106,042
September .....	92,404	1,203	3,470	4,914	-1,445	955	R -3,611	R 94,818
October .....	98,825	1,254	2,896	5,019	-2,123	8,199	R -1,269	R 91,027
November .....	96,910	1,189	2,889	6,245	-3,355	4,292	R 1,189	R 89,262
December .....	93,138	1,263	2,812	5,861	-3,050	R -1,590	R -5,386	R 98,328
<b>Total</b> .....	<b>1,146,635</b>	<b>14,087</b>	<b>36,347</b>	<b>59,163</b>	<b>-22,816</b>	<b>R 5,717</b>	<b>R 2,908</b>	<b>R 1,129,281</b>
<b>2008</b>								
January .....	98,619	1,340	2,381	4,915	-2,535	R -8,420	R 5,097	R 100,746
February .....	93,555	1,208	2,619	4,205	-1,586	R -3,388	R 3,604	R 92,961
March .....	96,933	1,085	2,640	6,682	-4,041	R 4,961	R -727	R 89,742
April .....	R 97,149	R 1,121	2,985	7,979	-4,994	R 6,688	R 2,902	R 83,687
May .....	R 96,585	R 1,190	2,702	8,394	-5,692	R 4,699	R -1,122	R 88,506
June .....	R 90,199	R 1,227	3,295	6,695	-3,401	R -3,905	R -3,422	R 95,351
July .....	98,578	NA	NA	NA	NA	NA	NA	NA
August .....	99,865	NA	NA	NA	NA	NA	NA	NA
<b>8-Month Total</b> .....	<b>771,482</b>	<b>NA</b>	<b>NA</b>	<b>NA</b>	<b>NA</b>	<b>NA</b>	<b>NA</b>	<b>NA</b>
<b>2007 8-Month Total</b> .....	<b>765,359</b>	<b>9,177</b>	<b>24,280</b>	<b>37,124</b>	<b>-12,844</b>	<b>-6,138</b>	<b>11,985</b>	<b>755,845</b>
<b>2006 8-Month Total</b> .....	<b>777,209</b>	<b>9,622</b>	<b>23,943</b>	<b>31,674</b>	<b>-7,731</b>	<b>23,709</b>	<b>12,111</b>	<b>743,281</b>

<sup>a</sup> Beginning in 2001, includes a small amount of refuse recovery (coal recaptured from a refuse mine, and cleaned to reduce the concentration of noncombustible materials).

<sup>b</sup> Waste coal (including fine coal, coal obtained from a refuse bank or slurry dam, anthracite culm, bituminous gob, and lignite waste) consumed by the electric power and industrial sectors. Beginning in 1989, waste coal supplied is counted as a supply-side item to balance the same amount of waste coal included in "Consumption."

<sup>c</sup> Net imports equal imports minus exports. Minus sign indicates exports are greater than imports.

<sup>d</sup> A negative value indicates a decrease in stocks; a positive value indicates an increase.

<sup>e</sup> "Losses and Unaccounted for" is calculated as the sum of production, imports,

and waste coal supplied, minus exports, stock change, and consumption.

<sup>f</sup> In 1973, stock change is included in "Losses and Unaccounted for."

R=Revised. NA=Not available. F=Forecast.

Notes: • For methodology used to calculate production, consumption, and stocks, see Note 1, "Production," Note 2, "Consumption," and Note 3, "Stocks," at end of section. • Data values preceded by "F" are derived from the Energy Information Administration's Short-Term Integrated Forecasting System. See Note 4, "Forecast Values," at end of section. • Totals may not equal sum of components due to independent rounding. • Geographic coverage is the 50 States and the District of Columbia.

Web Page: See <http://www.eia.doe.gov/emeu/mer/coal.html> for all available data beginning in 1973.

Sources: See end of section.

**Table 6.2 Coal Consumption by Sector**  
(Thousand Short Tons)

	End-Use Sectors									Transportation	Electric Power Sector <sup>e,f</sup>	Total
	Residential	Commercial			Industrial				Total			
		CHP <sup>a</sup>	Other <sup>b</sup>	Total	Coke Plants	Other Industrial		Total				
					CHP <sup>c</sup>	Non-CHP <sup>d</sup>						
<b>1973 Total</b> .....	4,113	(g)	7,004	7,004	94,101	(h)	68,038	68,038	162,139	116	389,212	562,584
<b>1975 Total</b> .....	2,823	(g)	6,587	6,587	83,598	(h)	63,646	63,646	147,244	24	405,962	562,640
<b>1980 Total</b> .....	1,355	(g)	5,097	5,097	66,657	(h)	60,347	60,347	127,004	(h)	569,274	702,730
<b>1985 Total</b> .....	1,711	(g)	6,068	6,068	41,056	(h)	75,372	75,372	116,429	(h)	693,841	818,049
<b>1990 Total</b> .....	1,345	1,191	4,189	5,379	38,877	27,781	48,549	76,330	115,207	(h)	782,567	904,498
<b>1995 Total</b> .....	755	1,419	3,633	5,052	33,011	29,363	43,693	73,055	106,067	(h)	850,230	962,104
<b>1996 Total</b> .....	721	1,660	3,625	5,285	31,706	29,434	42,254	71,689	103,395	(h)	896,921	1,006,321
<b>1997 Total</b> .....	711	1,738	4,015	5,752	30,203	29,853	41,661	71,515	101,718	(h)	921,364	1,029,544
<b>1998 Total</b> .....	534	1,443	2,879	4,322	28,189	28,553	38,887	67,439	95,628	(h)	936,619	1,037,103
<b>1999 Total</b> .....	585	1,490	2,803	4,293	28,108	27,763	36,975	64,738	92,846	(h)	940,922	1,038,647
<b>2000 Total</b> .....	454	1,547	2,126	3,673	28,939	28,031	37,177	65,208	94,147	(h)	985,821	1,084,095
<b>2001 Total</b> .....	481	1,448	2,441	3,888	26,075	25,755	39,514	65,268	91,344	(h)	964,433	1,060,146
<b>2002 Total</b> .....	533	1,405	2,506	3,912	23,656	26,232	34,515	60,747	84,403	(h)	977,507	1,066,355
<b>2003 Total</b> .....	551	1,816	1,869	3,685	24,248	24,846	36,415	61,261	85,509	(h)	1,005,116	1,094,861
<b>2004 Total</b> .....	512	1,917	2,693	4,610	23,670	26,613	35,582	62,195	85,865	(h)	1,016,268	1,107,255
<b>2005 Total</b> .....	378	1,922	2,420	4,342	23,434	25,875	34,465	60,340	83,774	(h)	1,037,485	1,125,978
<b>2006</b> January .....	27	186	130	316	1,879	2,217	2,866	5,083	6,961	(h)	87,317	94,621
February .....	25	169	118	287	1,830	2,024	3,023	5,046	6,876	(h)	81,043	88,231
March .....	25	170	118	288	2,005	2,115	2,945	5,060	7,065	(h)	82,499	89,877
April .....	16	134	56	189	1,862	2,050	2,742	4,792	6,654	(h)	72,560	79,419
May .....	17	139	58	197	1,968	2,059	2,735	4,794	6,762	(h)	80,515	87,490
June .....	18	147	61	208	1,939	2,104	2,710	4,814	6,753	(h)	87,319	94,298
July .....	18	163	46	208	1,933	2,202	2,671	4,872	6,806	(h)	97,113	104,145
August .....	18	163	46	209	1,911	2,202	2,675	4,877	6,788	(h)	98,183	105,198
September .....	15	138	39	177	1,939	2,061	2,815	4,876	6,815	(h)	84,327	91,334
October .....	22	136	117	254	2,094	2,074	3,031	5,105	7,199	(h)	83,724	91,199
November .....	26	159	137	296	1,865	2,020	3,048	5,068	6,933	(h)	82,293	89,548
December .....	30	183	158	341	1,733	2,136	2,949	5,085	6,818	(h)	89,742	96,930
<b>Total</b> .....	258	1,886	1,083	2,968	22,957	25,262	34,210	59,472	82,429	(h)	1,026,636	1,112,292
<b>2007</b> January .....	R 30	192	R 148	R 340	1,818	2,030	R 2,834	R 4,864	R 6,682	(h)	91,704	R 98,756
February .....	R 29	185	R 145	R 330	1,730	1,895	R 2,959	R 4,855	R 6,585	(h)	83,988	R 90,931
March .....	R 26	171	R 133	R 303	2,027	1,968	R 2,891	R 4,859	R 6,887	(h)	81,742	R 88,959
April .....	R 19	145	R 77	R 222	1,865	1,832	R 2,850	R 4,682	R 6,547	(h)	75,815	R 82,603
May .....	R 19	144	R 73	R 217	1,950	1,889	R 2,795	R 4,684	R 6,634	(h)	81,221	R 88,091
June .....	R 18	137	R 73	R 210	1,921	1,906	R 2,801	R 4,707	R 6,629	(h)	90,047	R 96,903
July .....	R 19	149	R 65	R 214	1,913	1,942	R 2,647	R 4,589	R 6,501	(h)	96,826	R 103,560
August .....	R 20	160	R 69	R 229	1,883	1,999	R 2,569	R 4,569	R 6,452	(h)	99,341	R 106,042
September .....	R 18	143	R 63	R 206	1,882	1,839	R 2,729	R 4,568	R 6,450	(h)	88,144	R 94,818
October .....	R 24	146	R 134	R 280	1,957	1,910	R 2,839	R 4,749	R 6,706	(h)	84,016	R 91,027
November .....	R 29	170	R 163	R 333	1,810	1,790	R 2,956	R 4,746	R 6,556	(h)	82,344	R 89,262
December .....	R 31	183	R 177	R 360	1,958	3,081	R 1,662	R 4,744	R 6,702	(h)	91,235	R 98,328
<b>Total</b> .....	R 282	1,924	R 1,320	R 3,244	22,715	24,082	R 32,533	R 56,615	R 79,331	(h)	1,046,424	R 1,129,281
<b>2008</b> January .....	29	198	136	333	1,834	1,940	R 2,753	R 4,693	R 6,527	(h)	93,856	R 100,746
February .....	27	185	127	312	1,792	1,938	R 2,715	R 4,654	R 6,445	(h)	86,176	R 92,961
March .....	27	183	126	308	1,910	1,925	R 2,744	R 4,669	R 6,579	(h)	82,828	R 89,742
April .....	R 21	R 160	R 79	R 239	R 1,864	R 1,910	R 2,709	R 4,619	R 6,483	(h)	R 76,945	R 83,687
May .....	R 19	F 163	R 60	R 223	R 1,911	R 2,020	R 2,593	R 4,613	R 6,524	(h)	R 81,739	R 88,506
June .....	19	F 183	37	221	1,805	F 1,978	2,626	4,605	6,410	(h)	F 88,701	95,351
<b>6-Month Total</b> ...	142	E 1,072	564	1,636	11,116	E 11,712	16,140	27,852	38,968	(h)	E 510,246	550,993
<b>2007 6-Month Total</b> ...	141	973	649	1,622	11,312	11,521	17,130	28,651	39,963	(h)	504,517	546,243
<b>2006 6-Month Total</b> ...	129	944	540	1,484	11,482	12,568	17,020	29,588	41,070	(h)	491,254	533,937

<sup>a</sup> Commercial combined-heat-and-power (CHP) and a small number of commercial electricity-only plants, such as those at hospitals and universities. See note at end of Section 7.

<sup>b</sup> All commercial sector fuel use other than that in "Commercial CHP."

<sup>c</sup> Industrial combined-heat-and-power (CHP) and a small number of industrial electricity-only plants. See note at end of Section 7.

<sup>d</sup> All industrial sector fuel use other than that in "Coke Plants" and "Industrial CHP."

<sup>e</sup> The electric power sector comprises electricity-only and combined-heat-and-power (CHP) plants within the NAICS 22 category whose primary business is to sell electricity, or electricity and heat, to the public.

<sup>f</sup> Through 1988, data are for consumption at electric utilities only. Beginning in 1989, data also include consumption at independent power producers.

<sup>g</sup> Included in "Commercial Other."

<sup>h</sup> Included in "Industrial Non-CHP."

R=Revised. E=Estimate. F=Forecast.

Notes: • CHP monthly values are from Table 7.4c; electric power sector monthly values are from Table 7.4b; all other monthly values are estimates derived from collected quarterly and annual data. See Note 2, "Consumption," at end of section. • Data values preceded by "F" are derived from the Energy Information Administration's Short-Term Integrated Forecasting System. See Note 4, "Forecast Values," at end of section. • Totals may not equal sum of components due to independent rounding. • Geographic coverage is the 50 States and the District of Columbia.

Web Page: See <http://www.eia.doe.gov/emeu/mer/coal.html> for all available data beginning in 1973.

Sources: See end of section.

**Table 6.3 Coal Stocks by Sector**  
(Thousand Short Tons)

	Producers and Distributors	End-Use Sectors					Electric Power Sector <sup>b,c</sup>	Total
		Residential and Commercial	Industrial			Total		
			Coke Plants	Other <sup>a</sup>	Total			
<b>1973 Year</b> .....	<b>12,530</b>	<b>290</b>	<b>6,998</b>	<b>10,370</b>	<b>17,368</b>	<b>17,658</b>	<b>86,967</b>	<b>117,155</b>
<b>1975 Year</b> .....	<b>12,108</b>	<b>233</b>	<b>8,797</b>	<b>8,529</b>	<b>17,326</b>	<b>17,559</b>	<b>110,724</b>	<b>140,391</b>
<b>1980 Year</b> .....	<b>24,379</b>	<b>NA</b>	<b>9,067</b>	<b>11,951</b>	<b>21,018</b>	<b>21,018</b>	<b>183,010</b>	<b>228,407</b>
<b>1985 Year</b> .....	<b>33,133</b>	<b>NA</b>	<b>3,420</b>	<b>10,438</b>	<b>13,857</b>	<b>13,857</b>	<b>156,376</b>	<b>203,367</b>
<b>1990 Year</b> .....	<b>33,418</b>	<b>NA</b>	<b>3,329</b>	<b>8,716</b>	<b>12,044</b>	<b>12,044</b>	<b>156,166</b>	<b>201,629</b>
<b>1995 Year</b> .....	<b>34,444</b>	<b>NA</b>	<b>2,632</b>	<b>5,702</b>	<b>8,334</b>	<b>8,334</b>	<b>126,304</b>	<b>169,083</b>
<b>1996 Year</b> .....	<b>28,648</b>	<b>NA</b>	<b>2,667</b>	<b>5,688</b>	<b>8,355</b>	<b>8,355</b>	<b>114,623</b>	<b>151,627</b>
<b>1997 Year</b> .....	<b>33,973</b>	<b>NA</b>	<b>1,978</b>	<b>5,597</b>	<b>7,576</b>	<b>7,576</b>	<b>98,826</b>	<b>140,374</b>
<b>1998 Year</b> .....	<b>36,530</b>	<b>NA</b>	<b>2,026</b>	<b>5,545</b>	<b>7,571</b>	<b>7,571</b>	<b>120,501</b>	<b>164,602</b>
<b>1999 Year</b> .....	<b>39,475</b>	<b>NA</b>	<b>1,943</b>	<b>5,569</b>	<b>7,511</b>	<b>7,511</b>	<sup>c</sup> <b>141,604</b>	<b>188,590</b>
<b>2000 Year</b> .....	<b>31,905</b>	<b>NA</b>	<b>1,494</b>	<b>4,587</b>	<b>6,081</b>	<b>6,081</b>	<b>102,296</b>	<b>140,282</b>
<b>2001 Year</b> .....	<b>35,900</b>	<b>NA</b>	<b>1,510</b>	<b>6,006</b>	<b>7,516</b>	<b>7,516</b>	<b>138,496</b>	<b>181,912</b>
<b>2002 Year</b> .....	<b>43,257</b>	<b>NA</b>	<b>1,364</b>	<b>5,792</b>	<b>7,156</b>	<b>7,156</b>	<b>141,714</b>	<b>192,127</b>
<b>2003 Year</b> .....	<b>38,277</b>	<b>NA</b>	<b>905</b>	<b>4,718</b>	<b>5,623</b>	<b>5,623</b>	<b>121,567</b>	<b>165,468</b>
<b>2004 Year</b> .....	<b>41,151</b>	<b>NA</b>	<b>1,344</b>	<b>4,842</b>	<b>6,186</b>	<b>6,186</b>	<b>106,669</b>	<b>154,006</b>
<b>2005 Year</b> .....	<b>34,971</b>	<b>NA</b>	<b>2,615</b>	<b>5,582</b>	<b>8,196</b>	<b>8,196</b>	<b>101,137</b>	<b>144,304</b>
<b>2006</b> January .....	33,486	NA	2,661	5,427	8,088	8,088	105,401	146,975
February .....	34,947	NA	2,708	5,272	7,980	7,980	105,986	148,913
March .....	35,113	NA	2,754	5,118	7,872	7,872	112,141	155,126
April .....	37,489	NA	2,783	5,297	8,079	8,079	125,097	170,665
May .....	34,587	NA	2,811	5,476	8,287	8,287	133,841	176,715
June .....	35,307	NA	2,839	5,655	8,494	8,494	135,734	179,535
July .....	38,147	NA	2,817	5,816	8,633	8,633	127,894	174,674
August .....	35,357	NA	2,795	5,977	8,772	8,772	123,884	168,013
September .....	33,170	NA	2,772	6,138	8,910	8,910	126,872	168,952
October .....	34,251	NA	2,824	6,261	9,085	9,085	134,941	178,277
November .....	35,752	NA	2,876	6,383	9,259	9,259	140,442	185,453
<b>December</b> .....	<b>36,548</b>	<b>NA</b>	<b>2,928</b>	<b>6,506</b>	<b>9,434</b>	<b>9,434</b>	<b>140,964</b>	<b>186,946</b>
<b>2007</b> January .....	35,986	NA	2,745	6,256	9,001	9,001	137,606	182,592
February .....	34,450	NA	2,561	6,006	8,568	8,568	135,096	178,113
March .....	34,007	NA	2,444	5,756	8,200	8,200	142,986	185,193
April .....	33,695	NA	2,417	5,728	8,145	8,145	151,296	193,136
May .....	33,107	NA	2,391	5,700	8,091	8,091	156,354	197,552
June .....	32,484	NA	2,364	5,672	8,037	8,037	156,412	196,933
July .....	31,967	NA	2,211	5,719	7,929	7,929	147,047	186,943
August .....	30,885	NA	2,091	5,765	7,856	7,856	142,067	180,808
September .....	30,090	NA	1,972	5,811	7,783	7,783	143,890	181,763
October .....	31,112	NA	1,960	5,748	7,708	7,708	151,141	189,962
November .....	32,069	NA	1,948	5,686	7,634	7,634	154,551	194,254
<b>December</b> .....	<sup>R</sup> <b>33,977</b>	<b>NA</b>	<b>1,936</b>	<b>5,624</b>	<b>7,560</b>	<b>7,560</b>	<b>151,127</b>	<sup>R</sup> <b>192,663</b>
<b>2008</b> January .....	28,258	<sup>R</sup> 153	1,778	5,348	7,126	<sup>R</sup> 7,279	148,707	<sup>R</sup> 184,244
February .....	30,009	<sup>R</sup> 143	1,620	5,073	6,693	<sup>R</sup> 6,836	144,011	<sup>R</sup> 180,856
March .....	32,464	<sup>R</sup> 142	1,462	4,797	6,259	<sup>R</sup> 6,401	146,952	<sup>R</sup> 185,817
April .....	33,569	<sup>R</sup> 169	<sup>R</sup> 1,560	<sup>R</sup> 4,858	<sup>R</sup> 6,418	<sup>R</sup> 6,587	<sup>R</sup> 152,349	<sup>R</sup> 192,505
May .....	32,047	<sup>R</sup> 158	<sup>R</sup> 1,658	<sup>R</sup> 4,919	<sup>R</sup> 6,577	<sup>R</sup> 6,735	<sup>R</sup> 158,422	<sup>R</sup> 197,204
June .....	31,395	157	1,756	4,980	6,736	6,893	<sup>F</sup> 155,011	193,299

<sup>a</sup> Through 1977, data are for stocks held by the manufacturing and transportation sectors. Beginning in 1978, data are for stocks held at manufacturing plants only.

<sup>b</sup> The electric power sector comprises electricity-only and combined-heat-and-power (CHP) plants within the NAICS 22 category whose primary business is to sell electricity, or electricity and heat, to the public.

<sup>c</sup> Through 1998, data are for stocks at electric utilities only. Beginning in 1999, data also include stocks at independent power producers.

R=Revised. NA=Not available.

Notes: • Stocks are at end of period. • Producers and distributors monthly values are estimates derived from collected annual data; industrial sector monthly

values are estimates derived from collected quarterly data; electric power sector monthly values are from Table 7.5. See Note 3, "Stocks," at end of section.

• Data values preceded by "F" are derived from the Energy Information Administration's Short-Term Integrated Forecasting System. See Note 4, "Forecast Values," at end of section. • Totals may not equal sum of components due to independent rounding. • Geographic coverage is the 50 States and the District of Columbia.

Web Page: See <http://www.eia.doe.gov/emeu/mer/coal.html> for all available data beginning in 1973.

Sources: See end of section.

## Coal

**Note 1. Production.** Preliminary monthly estimates of national coal production are the sum of weekly estimates developed by the Energy Information Administration (EIA) and published in the *Weekly Coal Production* report. When a week extends into a new month, production is allocated on a daily basis and added to the appropriate month. Weekly estimates are based on Association of American Railroads data showing the number of railcars loaded with coal during the week by Class I and certain other railroads. This number is converted into tons of coal by EIA by using the average number of tons of coal per railcar loaded reported in the most recent “Quarterly Freight Commodity Statistics” from the Surface Transportation Board. If an average coal tonnage per railcar loaded is not available for a specific railroad, the national average is used. To derive the estimate of total weekly production, the total rail tonnage for the week is divided by the ratio of quarterly production shipped by rail and total quarterly production. Data for the corresponding quarter of previous years are used to derive this ratio. This method ensures that the seasonal variations are preserved in the production estimates.

When preliminary quarterly data become available, the monthly and weekly estimates are adjusted to conform to the quarterly figure. The adjustment procedure uses State-level production data and is explained in EIA’s *Quarterly Coal Report*. Initial estimates of annual production published in January of the following year are based on preliminary production data covering the first nine months (three quarters) and weekly/monthly estimates for the fourth quarter. The fourth quarter estimates may or may not be revised when preliminary data become available in March of the following year, depending on the magnitude of the difference between the estimates and the preliminary data. In any event, all quarterly, monthly, and weekly production figures are adjusted to conform to the final annual production data published in the *Monthly Energy Review* in the fall of the following year.

**Note 2. Consumption.** Coal consumption data are reported by major end-use sector. Forecast data (designated by an “F”) are derived from forecasted values shown in the Energy Information Administration (EIA) *Short-Term Energy Outlook* (DOE/EIA-0202) table titled “U.S. Coal Supply and Demand: Base Case.” The monthly estimates are based on the quarterly values, which are released in March, June, September, and December. The estimates are revised quarterly as collected data become available from the data sources. Sector-specific information follows.

**Residential and Commercial—**Coal consumption by the residential and commercial sectors is reported to EIA for the two sectors combined; EIA estimates the amount consumed by the sectors individually. To create the estimates, it is first assumed that an occupied coal-heated housing unit consumes fuel at the same Btu rate as an oil-heated housing unit. Then, for the years in which data are available on the number of occupied housing units by heating source (1973–1981 and subsequent odd-numbered years), residential

consumption of coal is estimated by the following steps: a ratio is created of the number of occupied housing units heated by coal to the number of occupied housing units heated by oil; that ratio is then multiplied by the Btu quantity of oil consumed by the residential sector to derive an estimate of the Btu quantity of coal consumed by the residential sector; and, finally, the amount estimated as the residential sector consumption is subtracted from the residential and commercial sectors’ combined consumption to derive the commercial sector’s estimated consumption. The 2005 share is applied to 2006–2008, and the other missing years’ shares are interpolated.

**Industrial Coke Plants—**Prior to 1980, monthly coke plant consumption data were taken directly from reported data. From 1980–1987, coke plant consumption estimates were derived by proportioning reported quarterly data by using the ratios of monthly-to-quarterly consumption data in 1979, the last year in which monthly data were reported. Beginning in January 1988, monthly coke plant consumption estimates are derived from the reported quarterly data by using monthly ratios of raw steel production data from the American Iron and Steel Institute. The ratios are the monthly raw steel production from open hearth and basic oxygen process furnaces as a proportion of the quarterly production from those kinds of furnaces.

**Industrial Other—**Prior to 1978, monthly consumption data for the other industrial sector (all industrial users minus coke plants) were derived by using reported data to modify baseline consumption figures from the most recent Bureau of the Census Annual Survey of Manufactures or Census of Manufactures. For 1978 and 1979, monthly estimates were derived from data reported on Forms EIA-3 and EIA-6. From 1980–1987, monthly figures were estimated by proportioning quarterly data by using the ratios of monthly-to-quarterly consumption data in 1979, the last year in which monthly data were reported on Form EIA-3. Quarterly consumption data were derived by adding beginning stocks at manufacturing plants to current receipts and subtracting ending stocks at manufacturing plants. In this calculation, current receipts were the greater of either reported receipts from manufacturing plants (Form EIA-3) or reported shipments to the other industrial sector (Form EIA-6), thereby ensuring that agriculture, forestry, fishing, mining, and construction consumption data were included where appropriate. Starting in January 1988, monthly consumption for the other industrial sector is estimated from reported quarterly data by using ratios derived from industrial production indices published by the Board of Governors of the Federal Reserve System. Indices for six major industry groups are used as the basis for calculating the ratios: food manufacturing, which is North American Industry Classification System (NAICS) code 333; paper manufacturing, NAICS 322; chemical manufacturing, NAICS 325; petroleum and coal products, NAICS 324; non-metallic mineral products manufacturing, NAICS 327; and primary metal manufacturing, NAICS 331. The monthly ratios are computed as the monthly sum of the weighted indices as a proportion of the quarterly sum of the weighted indices by using the 1977 proportion as the weights.

Electric Power Sector—Monthly consumption data for electric power plants are taken directly from reported data.

**Note 3. Stocks.** Coal stocks data are reported by major end-use sector. Forecast data for the most recent months (designated by an “F”) are derived from forecasted values shown in the Energy Information Administration (EIA) *Short-Term Energy Outlook* (DOE/EIA-0202) table titled “U.S. Coal Supply and Demand: Base Case.” The monthly estimates are based on the quarterly values (released in March, June, September, and December) or annual values. The estimates are revised as collected data become available from the data sources. Sector-specific information follows.

Producers and Distributors—Prior to 1998, quarterly stocks at producers and distributors were taken directly from reported data. Monthly data were estimated by using one-third of the current quarterly change to indicate the monthly change in stocks. Beginning in 1998, end-of-year stocks are taken from reported data. Monthly stocks are estimated by a model.

Residential and Commercial—Prior to 1980, stock estimates for the residential and commercial sector were taken directly from reported data. From 1980-2007, stock estimates were not collected. Beginning in 2008, stocks data were collected.

Industrial Coke Plants—Prior to 1980, monthly stocks at coke plants were taken directly from reported data. From 1980 forward, coke plant stocks are estimated by using one-third of the current quarterly change to indicate the monthly change in stocks. Quarterly stocks are taken directly from data reported on Form EIA-5.

Industrial Other—Prior to 1978, stocks for the other industrial sector were derived by using reported data to modify baseline figures from a one-time Bureau of Mines survey of consumers. For 1978–1982, monthly estimates were derived by judgmentally proportioning reported quarterly data based on representative seasonal patterns of supply and demand. From 1983 forward, other industrial coal stocks are estimated as indicated above for coke plants. Quarterly stocks are taken directly from data reported on Form EIA-3 and therefore include only manufacturing industries; data for agriculture, forestry, fishing, mining, and construction stocks are not available.

Electric Power Sector—Monthly stocks data at electric power plants are taken directly from reported data.

**Note 4. Forecast Values.** Data values preceded by “F” in this section are forecast values. They are derived from EIA’s Short-Term Integrated Forecasting System (STIFS). The model is driven primarily by data and assumptions about key macroeconomic variables, the world oil price, and weather. The coal forecast relies on other variables as well, such as alternative fuel prices (natural gas and oil) and power generation by sources other than fossil fuels, including nuclear and hydroelectric power. Each month,

EIA staff review the model output and make adjustments, if appropriate, based on their knowledge of developments in the coal industry.

The STIFS model results are published monthly in EIA’s *Short-Term Energy Outlook*, which is accessible on the Web at <http://www.eia.doe.gov/emeu/steo/pub/contents.html>.

**Note 5. Additional Information.** EIA’s *Quarterly Coal Report* provides additional information about coal data and estimation procedures.

## Table 6.1 Sources

### Production

1973–September 1977: U.S. Department of the Interior, Bureau of Mines, *Minerals Yearbook* and *Minerals Industry Surveys*.

October 1977 forward: Energy Information Administration (EIA), *Weekly Coal Production*.

### Waste Coal Supplied

1989–1997: EIA, Form EIA-867, “Annual Nonutility Power Producer Report.”

1998–2000: EIA, Form EIA-860B, “Annual Electric Generator Report—Nonutility.”

2001–2003: EIA, Form EIA-906, “Power Plant Report,” and Form EIA-3, “Quarterly Coal Consumption and Quality Report—Manufacturing Plants.”

2004–2007: EIA, Form EIA-906, “Power Plant Report,” Form EIA-920, “Combined Heat and Power Plant Report,” and Form EIA-3, “Quarterly Coal Consumption and Quality Report—Manufacturing Plants.”

2008: EIA, Form EIA-923, “Power Plant Operations Report,” and Form EIA-3, “Quarterly Coal Consumption and Quality Report, Manufacturing and Transformation/Processing Coal Plants and Commercial and Institutional Coal Users;” and, for forecast values, EIA, Short-Term Integrated Forecasting System.

### Imports and Exports

U.S. Department of Commerce, Bureau of the Census, Monthly Reports IM-145 (Imports) and EM-545 (Exports).

### Stock Change

Calculated from data in Table 6.3.

### Losses and Unaccounted for

Calculated as the sum of production, imports, and waste coal supplied, minus exports, stock change, and consumption.

### Consumption

Table 6.2.

## Table 6.2 Sources

### Residential and Commercial Total

Coal consumption by the residential and commercial sectors combined is reported to the Energy Information Administration (EIA). EIA estimates the sectors individually using the method described in Note 2, “Consumption,” at the end of

Section 6. Data for the residential and commercial sectors combined are from:

1973–1976: U.S. Department of the Interior (DOI), Bureau of Mines (BOM), *Minerals Yearbook*.

January–September 1977: DOI, BOM, Form 6-1400, “Monthly Coal Report, Retail Dealers—Upper Lake Docks.”

October 1977–1979: EIA, Form EIA-2, “Monthly Coal Report, Retail Dealers—Upper Lake Docks.”

1980–1997: EIA, Form EIA-6, “Coal Distribution Report,” quarterly.

1998–2007: DOI, Mine Safety and Health Administration, Form 7000-2, “Quarterly Mine Employment and Coal Production.”

2008: EIA, Form EIA-3, “Quarterly Coal Consumption and Quality Report, Manufacturing and Transformation/Processing Coal Plants and Commercial and Institutional Coal Users;” and, for forecast values, EIA, Short-Term Integrated Forecasting System.”

#### **Commercial CHP**

Table 7.4c.

#### **Commercial Other**

Calculated as “Commercial Total” minus “Commercial CHP.”

#### **Industrial Coke Plants**

1973–September 1977: DOI, BOM, *Minerals Yearbook* and *Minerals Industry Surveys*.

October 1977–1980: EIA, Form EIA-5/5A, “Coke and Coal Chemicals—Monthly/Annual Supplement.”

1981–1984: EIA, Form EIA-5/5A, “Coke Plant Report—Quarterly/Annual Supplement.”

1985 forward: EIA, Form EIA-5, “Coke Plant Report—Quarterly”; and, for forecast values, EIA, Short-Term Integrated Forecasting System.

#### **Other Industrial Total**

1973–September 1977: DOI, BOM, *Minerals Yearbook* and *Minerals Industry Surveys*.

October 1977–1979: EIA, Form EIA-3, “Monthly Coal Consumption Report—Manufacturing Plants.”

1980–1997: EIA, Form EIA-3, “Quarterly Coal Consumption Report—Manufacturing Plants,” and Form EIA-6, “Coal Distribution Report,” quarterly.

1998–2007: EIA, Form EIA-3, “Quarterly Coal Consumption Report—Manufacturing Plants,” and Form EIA-6A, “Coal Distribution Report,” annual.

2008: EIA, Form EIA-3, “Quarterly Coal Consumption and Quality Report, Manufacturing and Transformation/Processing Coal Plants and Commercial and Institutional Coal Users;” and, for forecast values, EIA, Short-Term Integrated Forecasting System.

#### **Other Industrial CHP**

Table 7.4c.

#### **Other Industrial Non-CHP**

Calculated as “Other Industrial Total” minus “Other Industrial CHP.”

#### **Transportation**

1973–1976: DOI, BOM, *Minerals Yearbook*.

January–September 1977: DOI, BOM, Form 6-1400, “Monthly Coal Report, Retail Dealers—Upper Lake Docks.”

October–December 1977: EIA, Form EIA-6, “Coal Distribution Report,” quarterly.

#### **Electric Power**

Table 7.4b.

### **Table 6.3 Sources**

#### **Producers and Distributors**

1973–1979: U.S. Department of the Interior (DOI), Bureau of Mines (BOM), Form 6-1419Q, “Distribution of Bituminous Coal and Lignite Shipments.”

1980–1997: Energy Information Administration (EIA), Form EIA-6, “Coal Distribution Report,” quarterly.

1998 forward: EIA, Form EIA-6A, “Coal Distribution Report,” annual; and, for forecast values, EIA, Short-Term Integrated Forecasting System.

#### **Residential and Commercial**

1973–1976: DOI, BOM, *Minerals Yearbook*.

January–September 1977: DOI, BOM, Form 6-1400, “Monthly Coal Report, Retail Dealers—Upper Lake Docks.”

October 1977–1979: EIA, Form EIA-2, “Monthly Coal Report, Retail Dealers—Upper Lake Docks.”

2008: EIA, Form EIA-3, “Quarterly Coal Consumption and Quality Report, Manufacturing and Transformation/Processing Coal Plants and Commercial and Institutional Coal Users;” and, for forecast values, EIA, Short-Term Integrated Forecasting System.

#### **Industrial Coke Plants**

1973–September 1977: DOI, BOM, *Minerals Yearbook* and *Minerals Industry Surveys*.

October 1977–1980: EIA, Form EIA-5/5A, “Coke and Coal Chemicals—Monthly/Annual.”

1981–1984: EIA, Form EIA 5/5A, “Coke Plant Report—Quarterly/Annual Supplement.”

1985 forward: EIA, Form EIA-5, “Coke Plant Report—Quarterly”; and, for forecast values, EIA, Short-Term Integrated Forecasting System.

#### **Industrial Other**

1973–September 1977: DOI, BOM, *Minerals Yearbook* and *Minerals Industry Surveys*.

October 1977–1979: EIA, Form EIA-3, “Monthly Coal Consumption Report—Manufacturing Plants.”

1998–2007: EIA, Form EIA-3, “Quarterly Coal Consumption Report—Manufacturing Plants.”

2008: “Quarterly Coal Consumption and Quality Report, Manufacturing and Transformation/Processing Coal Plants and Commercial and Institutional Coal Users;” and, for forecast values, EIA, Short-Term Integrated Forecasting System.

#### **Electric Power**

Table 7.5.