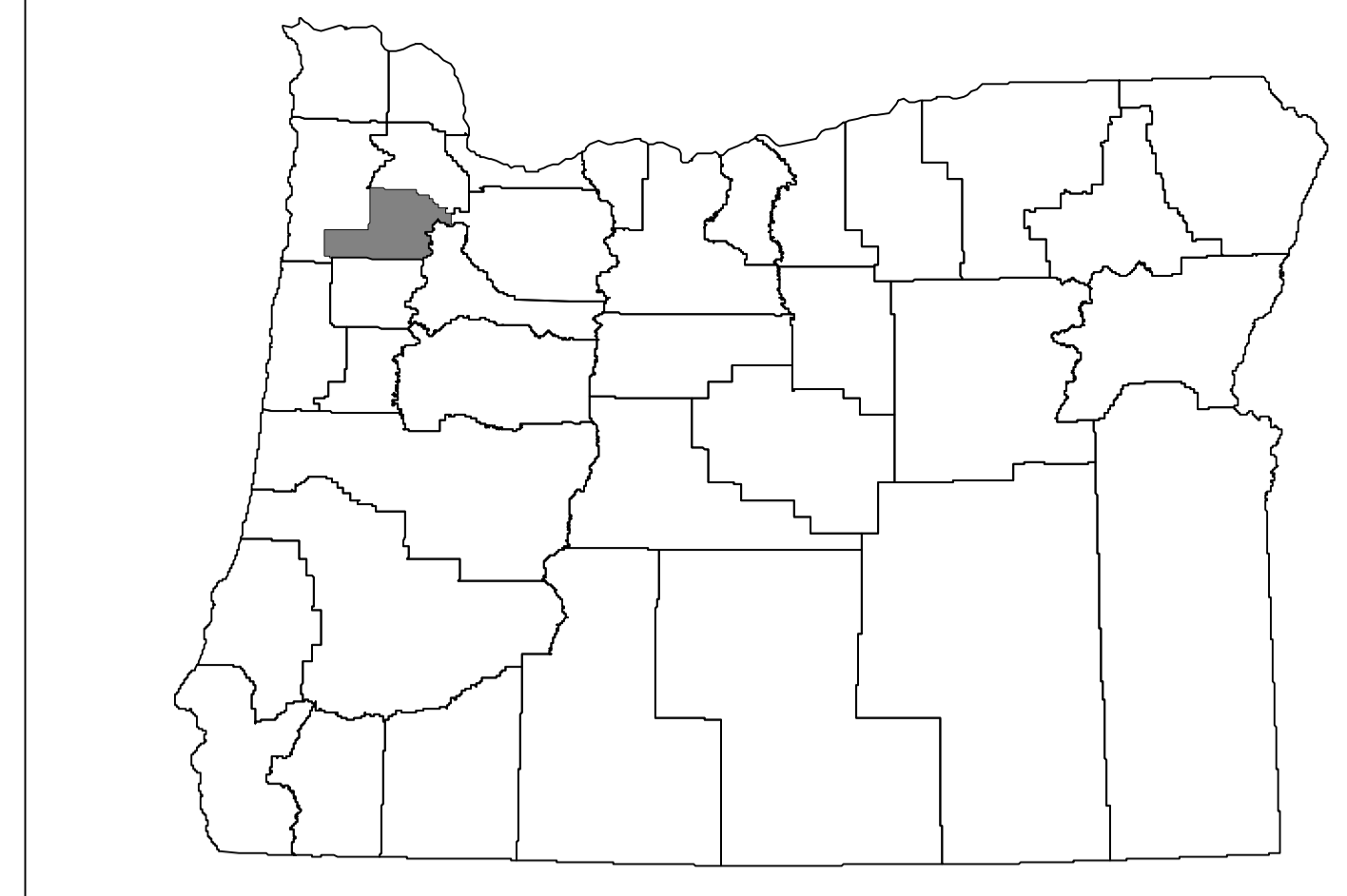


Measure 37 Claims Yamhill County

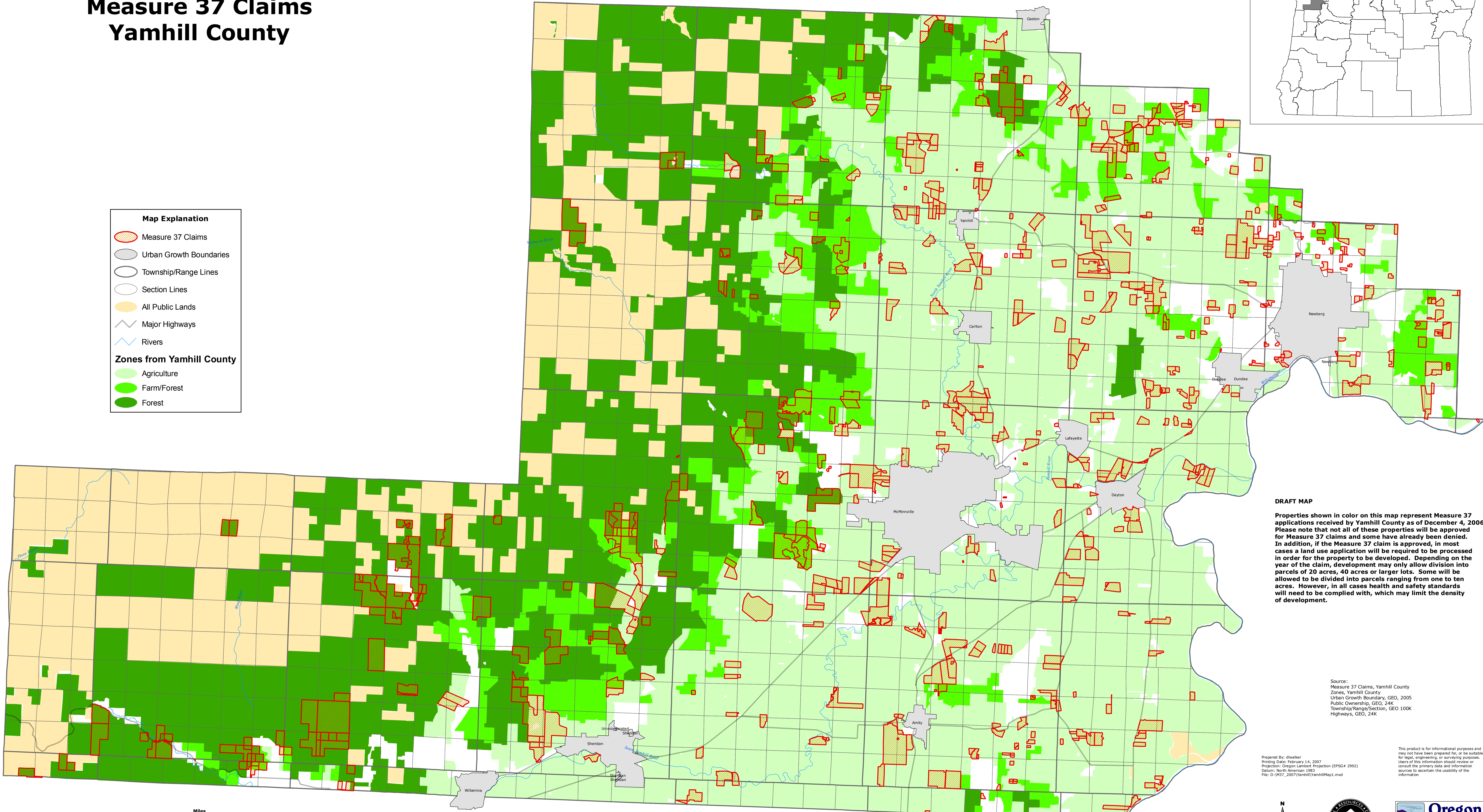


Map Explanation

- Measure 37 Claims
- Urban Growth Boundaries
- Township/Range Lines
- Section Lines
- All Public Lands
- Major Highways
- Rivers

Zones from Yamhill County

- Agriculture
- Farm/Forest
- Forest



DRAFT MAP

Properties shown in color on this map represent Measure 37 applications received by Yamhill County as of December 4, 2006. Please note that not all of these properties will be approved for Measure 37 claims and some have already been denied. In addition, if the Measure 37 claim is approved, in most cases a land use application will be required to be processed in order for the property to be developed. Depending on the year of the claim, development may only allow division into parcels of 20 acres, 40 acres or larger lots. Some will be allowed to be divided into parcels ranging from one to ten acres. However, in all cases health and safety standards will need to be complied with, which may limit the density of development.

Source:
Measure 37 Claims, Yamhill County
Zones, Yamhill County
Urban Growth Boundary, GEO, 2005
Public Ownership, GEO, 24K
Township/Range/Section, GEO 100K
Highways, GEO, 24K

Prepared by: dswalder
Printing Date: February 14, 2007
Projection: Oregon Lambert Projection (EPSG # 2992)
Datum: North American 1983
File: D:\M37_2007\Yamhill\YamhillMap1.mxd

This product is for informational purposes and may not have been prepared for, or be suitable for legal, engineering, or surveying purposes. Users of this information should review or consult the primary data and information sources to ascertain the usability of the information.

