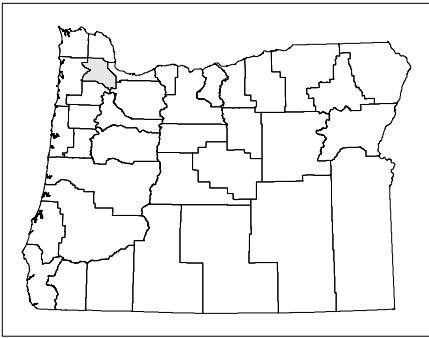
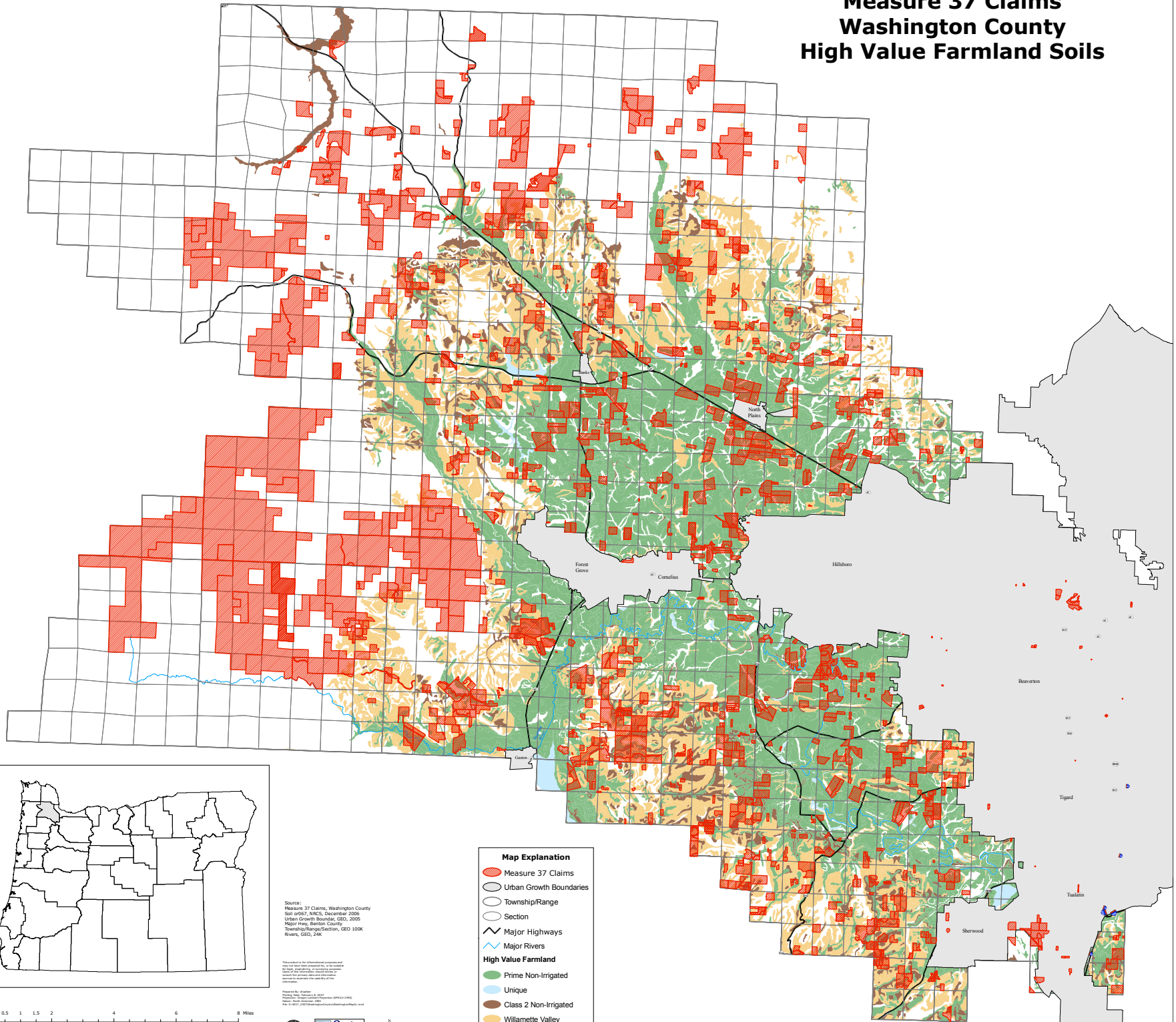


Measure 37 Claims Washington County High Value Farmland Soils



Source:
Measure 37 Claims, Washington County
Soil er067, NRCS, December 2006
Urban Growth Boundaries, GEO, 2006
Major Hwy, Benton County
Township/Range/Section, GEO 100K
Rivers, GEO, 24K

This product is for informational purposes and does not constitute a warranty or representation of any kind. The user assumes all liability for any use of this product. The user agrees to hold the Oregon Department of Agriculture harmless for any use of this product.

Prepared by: Debbie
Map Date: February 8, 2012
Map Scale: 1:63,360
North Arrow: North
File Path: \\s01\geodocs\geodocs\measures37\measures37.mxd



Map Explanation

- Measure 37 Claims
- Urban Growth Boundaries
- Township/Range
- Section
- Major Highways
- Major Rivers
- High Value Farmland**
 - Prime Non-Irrigated
 - Unique
 - Class 2 Non-Irrigated
 - Willamette Valley

